

2007

Vectra

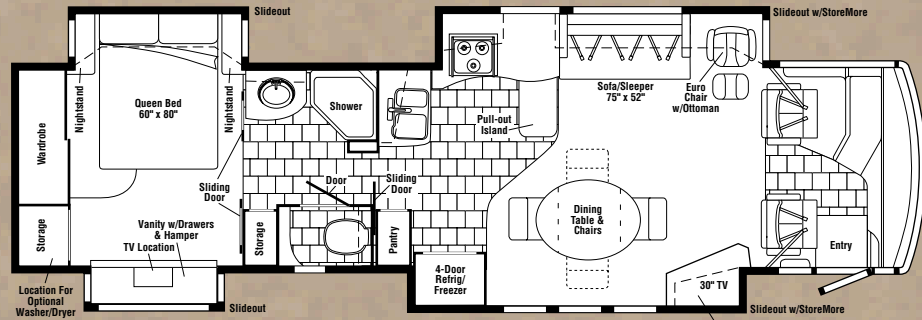




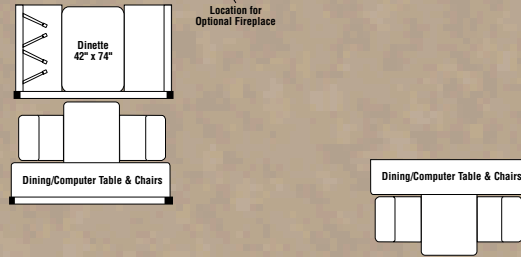
DESTINED TO TRAVEL.

Designed to surround you in refined comfort and provide years of memorable travel adventures, the 2007 Vectra stands tall and proud as the flagship of the Winnebago lineup. The Vectra delivers unparalleled features and performance. It all begins with the Evolution Chassis®, featuring one-piece formed steel rails that deliver superior strength-to-weight ratios and improved mid-section storage. It also provides incredible floorplan flexibility including the all-new 40TD, with incredibly spacious opposing sliderooms. Add to that exterior styling that will turn heads wherever you go and well-designed and appointed interior amenities that surround you in user-friendly comfort, and you have the 2007 Vectra, the coach of your dreams.

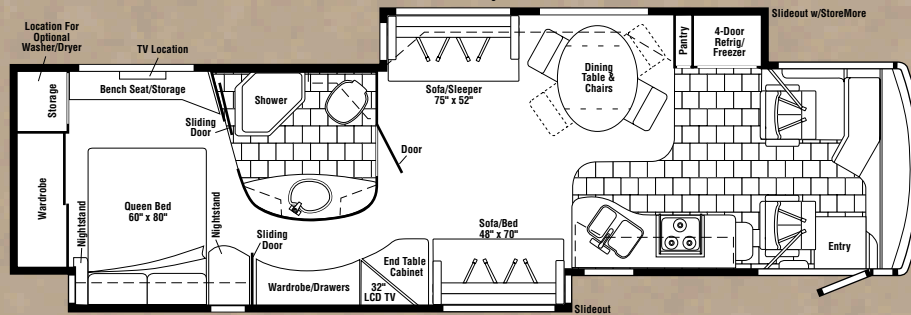
Floorplans



40FD



40KD



40TD - NEW



Note: Dimensions shown are for sleeping space only and may vary due to styling differences. Dashed lines denote overhead storage areas.

Interior Decor



Caspian Blu



Serenity



Sandy Cove



Concert Cherry



Honey Cherry



Washed Maple

Specifications

WEIGHTS & MEASURES	40FD	40KD	40TD
Length	39'8"	39'8"	39'8"
Exterior Height ¹	12'4"	12'3"	12'4"
Exterior Width ²	8'5.5"	8'5.5"	8'5.5"
Exterior Storage ³ (cu. ft.)	151.2	141.9	138.8
Awning Length	20'	20'	20'
Interior Height	7'2.5"	7'2.5"	7'2.5"
Interior Width	8'5"	8'5"	8'5"
Freshwater Capacity w/Heater ⁴ (gal.)	108	108	107
Holding Tank Capacity – Black/Gray ⁴ (gal.)	57/72	57/72	52/86
LP Capacity ⁵ (gal.)	31	31	31
Fuel Capacity (gal.)	100	100	100
GCWR ⁶ (lbs.)	44,320	44,320	44,320
GVWR (lbs.)	34,320	34,320	34,320
GAWR – Front (lbs.)	14,320	14,320	14,320
GAWR – Rear (lbs.)	20,000	20,000	20,000
Wheelbase	267"	267"	267"

1. The height of each model is measured to the top of the tallest standard feature and is based on the curb weight of a typically equipped unit. The actual height of your vehicle may vary by several inches depending on chassis or equipment variations. Please contact your dealer for further information.
2. Floorplans feature a wide-body design — over 96 inches. In making your purchase decision, you should be aware that some states restrict access on some or all state roads to 96 inches in body width. Before making your purchase decision, you should confirm the road usage laws in the states of interest to you.
3. The load capacity of your motor home is designated by weight, not by volume, so you cannot necessarily use all available space when loading your motor home.
4. Capacities are based on measurements prior to tank installation. Slight capacity variations can result due to installation applications.
5. Capacities shown are tank manufacturer's listed water capacity (W.C.). Actual filled LP capacity is 80% of listing due to overfilling prevention device on tank.
6. Actual towing capacity is dependent on your particular loading and towing circumstances, which includes the GVWR, GAWR and GCWR, as well as adequate trailer brakes. Please refer to the chassis operator's manual of your vehicle for further towing information.

Winnebago Industries' continuing program of product improvement makes specifications, equipment, model availability and prices subject to change without notice.



Seat belts are your most important hookup. Always buckle up.
NYSE listing: WGO

Visit www.winnebagoind.com for virtual product tours and the latest product updates.
2006 Winnebago Industries Inc., Forest City, Iowa 50435. Printed in USA.

Exterior Decor



Valley Sage



Aspen Mist



Dark Forest