

2007 Fifth Wheel

Montana

"Built by people who know RVing"



North America's #1 Selling Fifth Wheel for 5 Consecutive Years!

Montana

2007

The Montana product team is focused on providing every customer with the best overall features, value and construction making it the #1 selling fifth wheel for five consecutive years.*

We focus on all of the details so our customers can rest and enjoy Montana's excellent product design in four critical areas

Residential styling, amenities, and four season living ability, creates a home-away-from-home atmosphere like no other.

Excellent towability with better aerodynamics, suspension, and weight distribution, insures that your drive is as comfortable as your stay.

Superior construction to provide long lasting durability means you'll enjoy your Montana for years to come.

Tremendous interior and exterior storage space adds the crowning touch, adding convenience in every area of your vacation home.

For many years, Montana customers have rested comfortably knowing their Montana provides everything they need to enjoy living the RV lifestyle to the fullest!

*Stat Survey - Independent research data 2005.



The Montana's master bedroom suite features abundant storage, cedar-lined front closets, ample drawer space and pull-out full extension drawer guides.

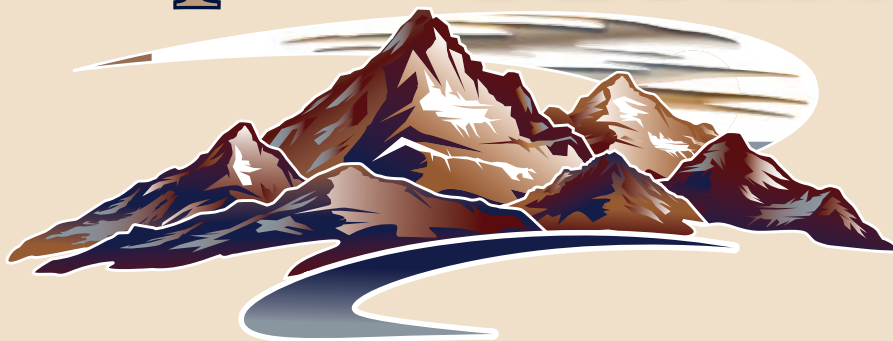
In addition, Montana provides 6'5" of head room, a sky light, and our 19" television swivels out to the perfect viewing angle. The optional king bed maximizes comfort. Shown here in Venetian gold décor.





The 3000 RK side lounge, shown here in the Sapphire décor, features an amazing kitchen area for the ultimate in storage and function. Whether you are resting in matching high-back recliners or the deluxe hide-a-bed sofa, you will have a spectacular view of the great outdoors or the built-in 27" color television. A standard DVD/CD player with AM/FM stereo and a 5.1 digital six-speaker surround-sound completes a truly residential entertainment experience that you're sure to enjoy.

Move up to Montana





The rear lounge of this 3075 RL features two comfortable recliner gliders and hide-a-bed sofa, shown here in Venetian Gold decor. The optional free-standing coffee table and table with lamp, elegant hardwood cabinetry, decorative ceiling fan and abundant storage space make this floor plan a customer favorite.

Quality.

A Montana's appearance speaks of class-leading style and comfort. But we are not satisfied with mere good looks. So, we build the Montana as tough and durable as it is beautiful. Realizing that the final quality of the Montana is a direct result of the quality of everything that goes into it, Montana's engineers analyze every component to ensure years of trouble-free enjoyment.

Montana's standard quality features like the Total Surround Aluminum Plus™ framing, full-extension steel drawer guides, solid hardwood cabinet doors and drawers as well as deluxe furnishings provide long lasting durability. Other manufacturers find it easier to talk about quality than to create it. Montana's Old World craftsmen are the finest in the industry and continually strive to provide a level of "fit-and-finish" second to none. Your peace of mind is assured because you are purchasing an RV worthy of its established reputation for quality.



Towability.

The Montana comes equipped with the Mor/Ryde™ suspension system. This unique suspension upgrade replaces the steel leaf spring equalizer with a heavy duty rubber shear spring designed to increase the dampening effects of road shock by as much as 30%.

In addition, with Mor/Ryde™ the amount of travel in each axle is increased by 100%, from 2" to 4", providing a much smoother and more comfortable ride for you and your cargo.

The Mor/Ryde™ suspension system will better protect personal belongings minimizing road shock and preventing cabinets and drawers from accidentally opening during travel on uneven road surfaces.

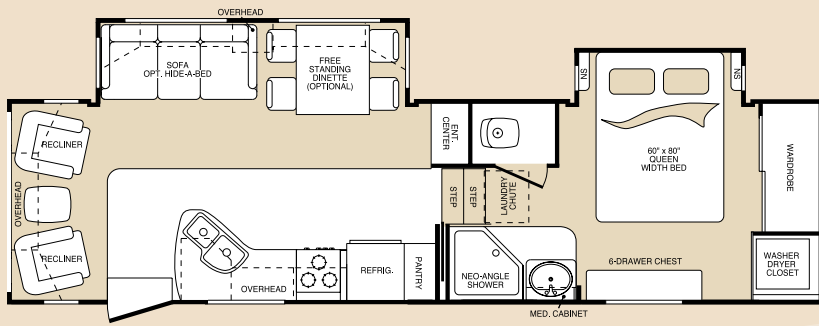


The innovative Hitch Vision™ mirror mounted on the center of the Montana front end makes it much easier to align the hitch pin of the fifth wheel to your truck.

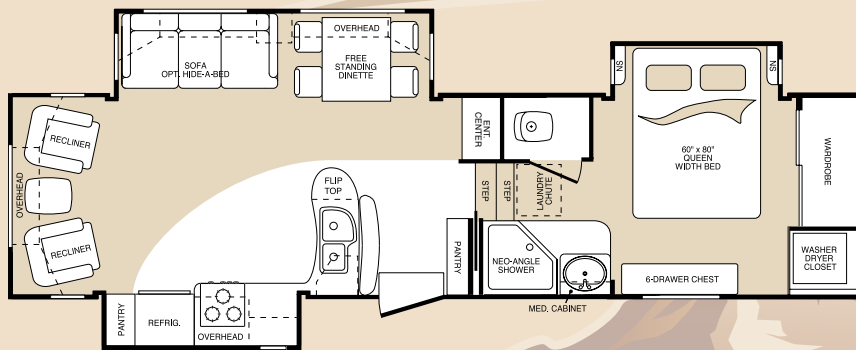
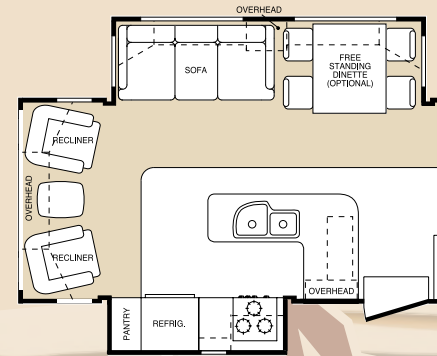


Montana's newly designed front fiberglass cap dramatically improves the overall turning radius by 30%, even while towed by short bed trucks! The top to bottom and side to side curvature of the front cap aerodynamically cuts through the air more efficiently, improves the tow vehicle's fuel economy and stabilizes the trailer.

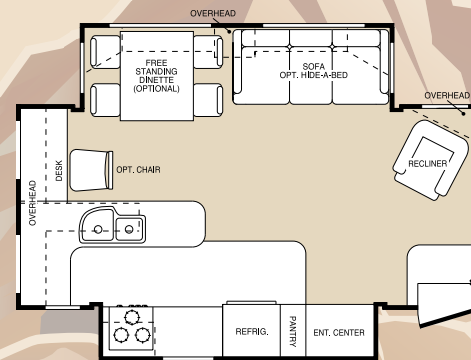
Montana



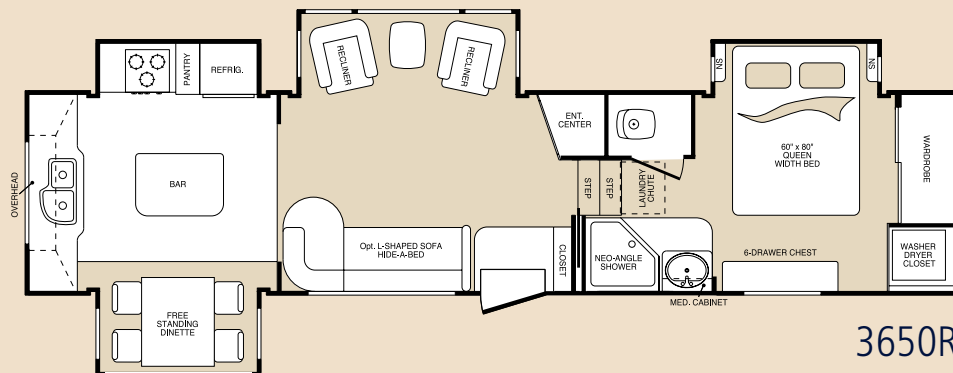
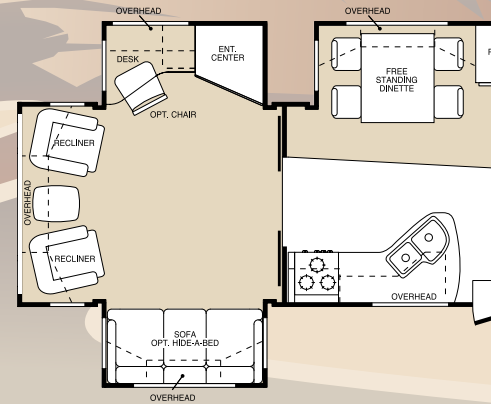
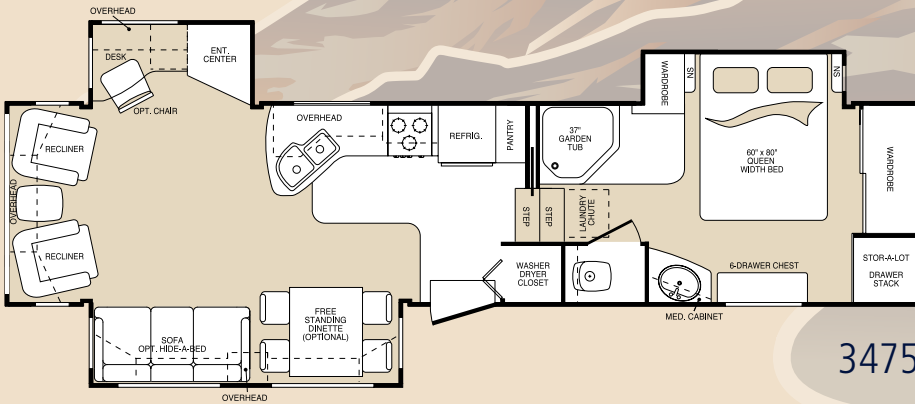
2955RL



3075RL

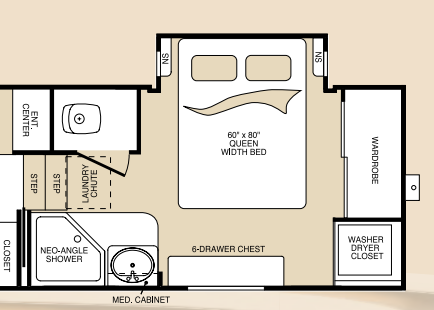


3475RL

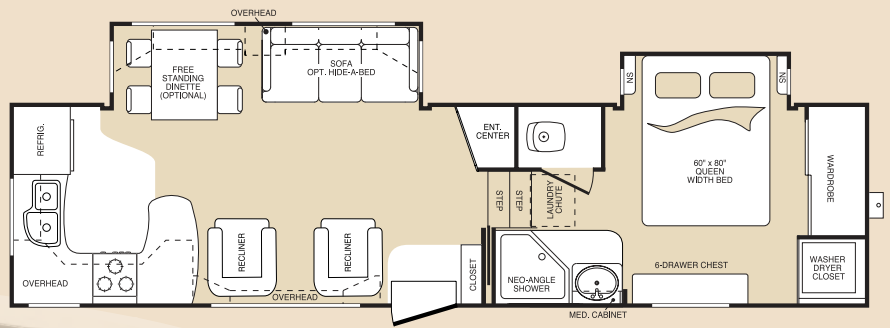


3650RK

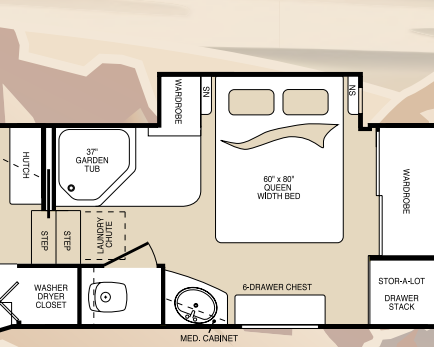
'07 Floorplans.



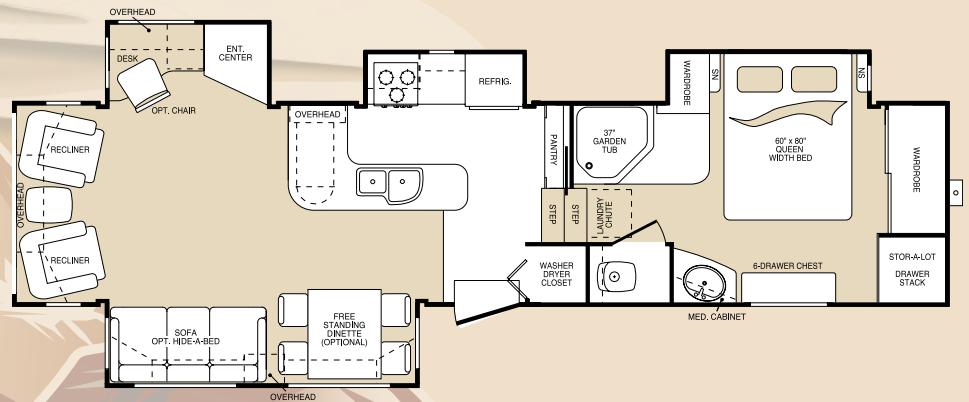
2980RL



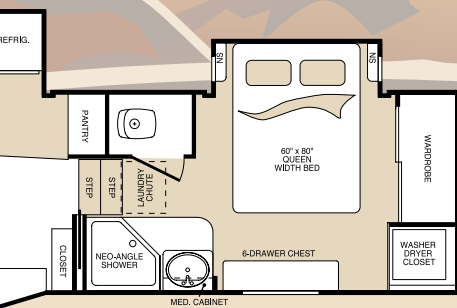
3000RK



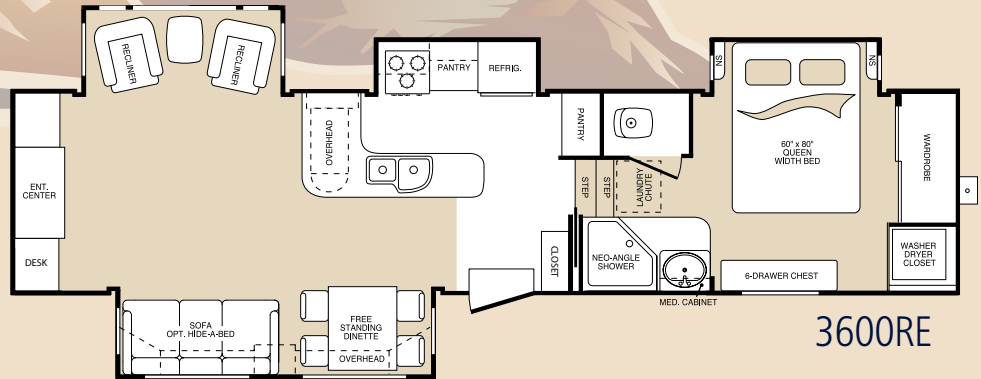
3295RK



3400RL



3500RL



3600RE

ITEM	2955 RL	2980 RL	3000RK	3075 RL	3295 RK	3400RL	3475RL	3500RL	3600RE	3650RK
Shipping Weight ^{1,2}	9895	10210	10210	10375	11055	11650	10990	11650	11995	11715
Carrying Capacity	2325	2460	2515	3835	3405	2325	3010	2205	1875	2355
Hitch	1820	2270	2325	2210	2460	1975	2000	1855	1870	2070
Exterior Length	33' 2"	33' 5"	34' 11"	33' 7"	35' 8"	37' 3"	36' 8"	37' 4"	37' 4"	37' 4"
Ext Height - Top of A/C	12' 9"	12' 9"	12' 9"	12' 9"	12' 9"	12' 9"	12' 9"	12' 9"	12' 9"	12' 9"

Due to continuous product improvement, modifications may be made without prior notification or obligation. Specifications are calculated as base unit with standard equipment only.

¹ Hi-gloss fiberglass option will add approximately 200 lbs.

² Shipping weight includes all base and standard run options

Comfort.

Your level of joy is directly proportional to your level of comfort. That's why Montana pays so much attention to providing comfort. Extra tall slide rooms and 6'5" of height entering the bedroom / bathroom suite allow ample head room. Full-size designer sofas invite you to relax during the day and an optional king size bed promises to make your nights full of peaceful bliss.

More examples of comfort-focused amenities include large, fully vented windows, residential-grade carpeting, and large glass enclosed shower stalls. The result—your sanctuary from the cares of the world is created.

The Spacemaker™ free-standing dinette features a tabletop which slides forward and back on either side so it is easier to enter and leave the dining area. The elegant, single pedestal design allows ample leg room under the table. You'll find plenty of additional storage under the hinged seat cushions.



Imagine the pleasure of this 5,100 BTU electric fireplace whenever you want to enjoy a touch of cozy warmth.



Style.

Three fashionable color schemes form the foundation for Montana's carefully coordinated room décors. Beautiful drapery and upholstery fabrics, designer hardware, fashionable window treatments, walls and counter tops in the latest colors and materials — all contribute to Montana's legendary style, setting your fifth wheel home apart from all others in a quiet but dramatic statement that says you've "arrived."

Our larger garden tub with glass enclosure, skylight and spray head make preparing for the day a wonderful experience.





The galley area of this 3075 RL provides unmatched storage space and convenience with its wrap around solid surface countertop with flip-up extension, large double door refrigerator, convection / microwave oven, 22" LP gas oven, sink covers, abundant cabinets and drawer space. The full linoleum entryway and kitchen makes cleaning up easy. We've also provided convenient access to the rechargeable flashlight, coat closet, and control panel at the entrance to this new Montana floorplan.

Convenience.

At Montana, brilliant ergonomics are a trademark to be found literally at every turn. Veteran travelers instantly recognize RV-friendly features such as a computer work station with data port, Freezeguard™ winterizing system, E-Z Lube wheels and a central exterior convenience center. An abundance of more subtle conveniences like plate-depth overhead cabinets and a rechargeable flashlight exist to improve your ownership experience.

Our designers have also examined every detail to offer maximum storage and utilization of space. Pull-out pantry baskets, a lazy Susan, the Spacemaker™ dinette group and a sliding waste container are just a few examples of an excellent use of space that is synonymous with all Montana fifth wheels.



The high arching single-level kitchen faucet, deep solid surface sinks and dual tiered sink covers with cutting boards and dish rack provide conveniences not found in other brands.

Durability.

TOTAL
SURROUND
ALUMINUM PLUS



Roof (R-14)†

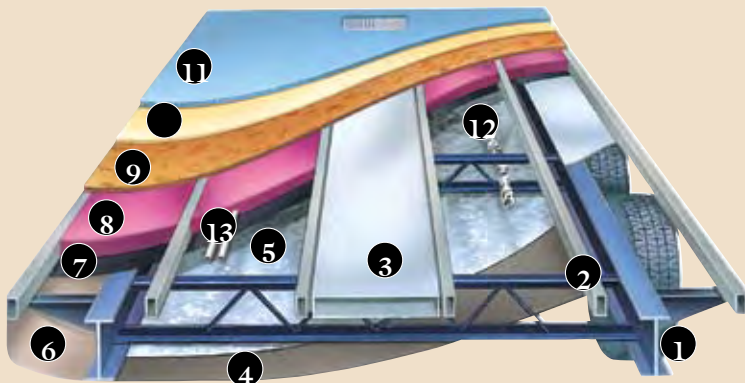
- | | |
|--|-----------------------------|
| 1. One-Piece EPDM Rubber Roof Membrane with 12-Year Warranty | 5. Fiberglass Insulation |
| 2. Aluminum Radius Roof Transition Molding | 6. Ceiling Decking |
| 3. 3/8" Roof Decking | 7. Vinyl Ceiling |
| 4. 5" Fabricated galvanized Steel Truss Rafters on 16" Centers | 8. Aluminum wrapped AC duct |
| | 9. Vented attic |
- † When Equipped with "Arctic Insulation Package"

Sidewalls (R-9)

- | | |
|---|---|
| 10. Gel-Coated Fiberglass | 16. Electro-Galvanized Sheet (EGS) Metal Backing Strips |
| 11. 1/8" Luan Board | 17. Radius Corner Blocks |
| 12. Second Layer 1/8" Luan Board with Seams Staggered | 18. Easy Access Adjustable Snap Jack Pins |
| 13. Solid Block Insulating Foam | 19. Heavy Duty 8-Lug Wheels |
| 14. Interior Decorator Board | |
| 15. 2" Welded Aluminum Wall Studs | |

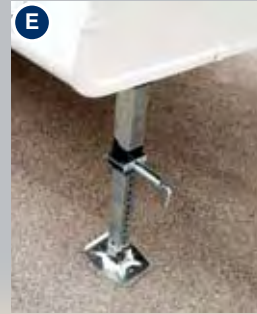
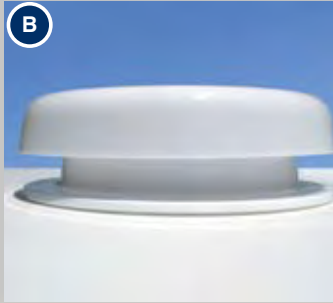
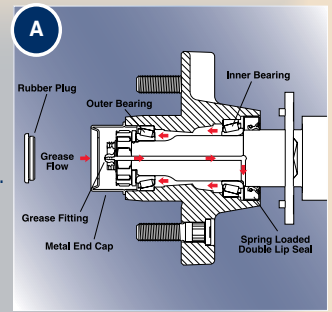
Floor (R-21)†

- | | |
|---|---|
| 1. 10" Steel "Rolled" I-Beam | 9. 5/8" Seamless, Floor Decking |
| 2. 3" Welded Aluminum Floor | 10. Carpet Pad |
| 3. 3" Large-Capacity Heat Duct | 11. Residential-Grade Carpeting with Stain Protectant |
| 4. 1/4" ABS Underbelly | 12. 2" Heat Duct from Furnace into Underbelly |
| 5. Astro-Foil Insulation (97% Heat Reflection)† | 13. Enclosed and Insulated Water Lines |
| 6. Full Radius Wrap Aluminum Enclosure | |
| 7. Moisture Barrier | |
| 8. Fiberglass Insulation | |



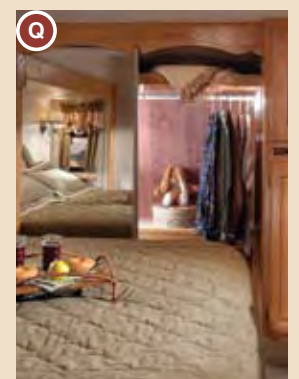
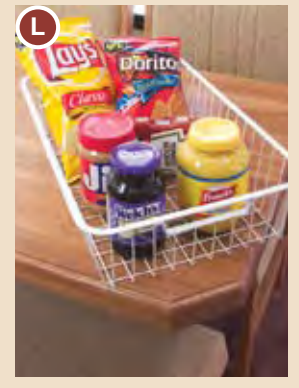
Exterior Details.

- A. Easy-lube axles can be lubricated without removing the wheel.
- B. Attic vents provide vital escape routes for unwanted moisture that can accumulate with extended use.
- C. "Tailgate Compatibility" means there's no need for a special tailgate; just drop it down and hitch up the Montana.
- D. The detachable marine power cord is safe, easy to use and completely sealed.
- E. Easy-pull snap jacks are mounted toward the front for convenient access.
- F. The convenience center provides access to all major exterior plumbing functions and enclosed dump valves.



Interior Details.

- H. Hidden storage is great for keys or jewelry.
- I. Montana's heated stool room includes a high-rise porcelain toilet with a residential size lid.
- J. The strategically placed bedroom lamp casts light downward into your drawer areas.
- K. The versatile pantry area has loads of storage potential and a pull-out waste basket.
- L. Pull-out pantry baskets are convenient lightweight carriers for your outdoor dining.
- M. Montana's Lazy Susan places food items at your fingertips.
- N. Under-bed storage area for bulkier, larger items includes a hidden and secured safe.
- O. The hidden laundry chute enables you to keep your RV home organized and clean.
- P. The full length bedroom mirror with lovely trim detail reflects our careful craftsmanship.
- Q. The lighted cedar-lined front closet provides residential storage for essential wardrobe items.



Standard Features.

Exterior

- Welded, totally aluminum-framed walls and floor • 2" laminated, gel-coated Filon exterior walls (R-9) • 5" fabricated steel truss rafters • Aerodynamic front and rear fiberglass caps
- Outstanding exterior pass-thru storage • Insulated radius baggage doors with inside fasteners • Radius wrap lower walls • Heated, enclosed holding tanks • ABS, fully enclosed underbelly • 16" radial tires • Heavy duty 8-lug wheels • Step well for lower first entry step
- Seamless, one-piece 5/8" floor decking • Flip-up front storage shelf • "Wide Stance" front jack legs with adjustable snap jack pins • In-floor heated and enclosed water lines

Interior

- High-density residential carpeting and upholstery with fabric protector • Solid hardwood cabinet doors with cathedral tops • Deluxe entertainment center with TV cabinet • Residential full extension steel drawer glides • 6'3" extra tall slide room with overhead cabinets • (1 or 2) glider/recliner(s) w/footrest • Decorator jackknife sofa • Computer work station with data port (most models) • Flush floor slide room in living room • Day/night shades

Kitchen

- Large, 8 cubic foot double door refrigerator • Granite impregnated composite countertop
- 1-piece molded kitchen sink with deep bowls • Lighted range hood with fan • Wide, deep drawers – real wood • Residential-size overhead cabinets • Linoleum kitchen floor and entryway

Bathroom

- 36" garden tub with glass enclosure (3295, 3400, 3475, 3670, 3685) • Neo-angle shower with glass enclosure (2955, 2980, 3000, 3500, 3650) • Adult height vanity • Larger residential-size bath sink • Decorative vanity light • Residential-style medicine cabinet • Linen shelf with towel hooks • Toilet with foot pedal flush.

Bedroom

- Single level bedroom/bath suite • Quilted bedspread and 2 pillow shams • Residential-sized chest of drawers • TV cabinet with cable and satellite outlets • Deluxe innerspring mattress • "Shoe closet" storage area in wardrobe • Nightstand shelves • Wood window valance with hidden storage • Cedar-lined front closet

Utilities

- 35,000 BTU furnace • No-fuss, "Freezeguard"™ winterizing kit • Systems monitor panel
- 55-amp converter • 50-amp detachable, marine power cord • Automatic ignition furnace with in-floor ducting • Phone jack / data port • Cable TV hook-up • Fresh water system – 62 gal.; Grey water – 76 gal.; Black water – 38 gal. • Carbon monoxide detector

Product information is as accurate as possible as of the date of publication of this brochure. Features, floor plans, and specifications are subject to change without notice. Please also consult Keystone's web site at keystoneRV.com for more current product information and specifications.
Tow Vehicle Disclaimer: CAUTION: Owners of Keystone recreational vehicles are solely responsible for the selection and proper use of tow vehicles. All customers should consult with a motor vehicle manufacturer or their dealer concerning the purchase and use of suitable tow vehicles for Keystone products. Keystone disclaims any liability or damages suffered as a result of the selection, operation, use or misuse of a tow vehicle. KEYSTONE'S LIMITED WARRANTY DOES NOT COVER DAMAGE TO THE RECREATIONAL VEHICLE OR THE TOW VEHICLE AS A RESULT OF THE SELECTION, OPERATION, USE OR MISUSE OF THE TOW VEHICLE. 5/06

Montana Fifth Wheel is a product of:



**Keystone RV
Company**

2642 Hackberry Drive Goshen, IN 46526
(574) 535-2100 www.keystone-montana.com

Your Montana Dealer:



ZERO DEGREE

Tested and approved features
enhance four-season living.

- Vented attic
- Enclosed heated dump valves
- Enclosed heated holding tanks
- Insulated water lines along frame
 - Digital thermostat
 - Heated stool room
- Arctic insulation package
- Enclosed low point drain shut-off valves

Optional Features.

Moving To Montana Package:

- 15,000 BTU A/C with quick cool • Convection microwave • Awning • 27" TV in living area

Customer Convenience Group

Easy lube axles / Deep tint windows / Safety glass windows / Vented attic / 12 v. rechargeable flashlight near exit / Cabinet toe kicks / Lazy Susan / Laundry chute to basement / Reading lights over bed / TV antenna and booster / High output range with automatic ignitor and 22" oven / Water heater by-pass kit / easy-Access™ double 30-lb. LP bottles with auto change-over / Two kitchen sink-covers with dish drain rack, cutting board, and composite counter-tops / Lighted, cedar-lined front closet / Central convenience center / Deluxe inner-spring mattress / Aerodynamic front cap with 30" improved turning radius and Hitch Vision™ Mirror

Value Package:

- Fold-away entry/exit handle • Patio scare light: door and roadside • Crank-down stabilizer jacks • Electric front jacks • Raised-oak refrigerator front • Flush mount range cover • Roof ladder • DVD/AM/FM receiver with 5.1 surround sound • Skydome over tub • Mor/Ryde Suspension • Brinks® hidden safe • Satellite prep • 19" bedroom TV • Deluxe porcelain toilet upgrade • Black tank flush • Spare tire and carrier

Exterior Options

- Outside shower • Slide-room awning(s) • Aluminum wheels • Dual pane safety glass windows • Hi-gloss fiberglass • Basement slide tray

Interior Options

- Spacemaker free-standing dinette w/4 storage chairs • Neo-angle shower w/glass enclosure IPO garden tub • King size bed • Full size hide-a-bed sofa • End table and lamp • Sofa table • High-back desk chair

Equipment Options

- Second 13,500 BTU A/C in bedroom • Wire and frame for second A/C • Ceiling fan • Power vent fan w/rain sensor • Generator prep • 10 cubic foot double-door refrigerator • Washer/Dryer prep • Arctic insulation package • Fireplace • Hydraulic selector valves • Central vacuum • 5.5 KW Generator • Electric fireplace

IPO=In Place Of

Visit the Montana Owners' Club website, independently created and maintained by Montana fifth wheel owners, at www.montanaowners.com