

Jamboree
CLASS C

THIS WEEKEND, DON'T RUN ERRANDS. RUN FREE.



 FLEETWOOD.

THE TIME OF YOUR LIFE IS NOW.

Sitting beside a roaring campfire can do wonders for family spirit. It's time to make some memories in Jamboree. Friends are welcome too - Jamboree offers many sleeping options from queen beds to cabover bunks, sofa sleepers to convertible dinette beds. Choose from three models: the value-packed Jamboree Sport, Jamboree, and the luxurious Jamboree GT. Each one offers plenty of room both inside and out to store your gear, and lots of towing muscle so you can take your favorite toys[†]. The chores can wait until next weekend...get out there and enjoy life.

[†] Refer to footnote on the Weights and Measurements page for information.



SPORT/JAMBOREE/GT

Which Jamboree is right for you?

Jamboree Sport



Jamboree



Jamboree GT





For families just entering the comfortable, convenient world of RVing, Jamboree Sport is the way to go. It's packed with features at a value price. You'll enjoy plenty of room to eat, sleep, relax and play, thanks to the spacious design. And the galley is fully equipped with a refrigerator, microwave, stove with oven, and pantry to make mealtime easy. Families carry lots of stuff, so Jamboree Sport has been designed with lots of storage space, too. It's just another way Jamboree Sport gives you more for your money.

JAMBOREE SPORT




The Fleetwood Jamboree has consistently raised the standard for family camping for more than 35 years. Every year, Fleetwood engineers perfect the well-known Jamboree to meet the needs of today's families. The 2008 Jamboree is no exception, boasting innovative floor plans, including an optional media center that comes in handy on a rainy spring day. In fact, you can camp in most any season, thanks to Jamboree's heated basement. With features like these, you can see why Jamboree remains one of the best-selling motor homes on the market.

JAMBOREE



The Jamboree GT was created for families that like a dash of luxury with their adventure. Everything is a bit more upscale in this sophisticated beauty. You'll enjoy extra indulgences, from the supple Ultraleather™ driver and passenger seats to the standard 19" LCD TV to the larger galley appliances. Every model offers a single or double slide-out to provide unparalleled room inside. Optional full-body paint adds a touch of prestige to the Jamboree GT, our premium Jamboree for those who like the best of everything.

JAMBOREE GT



JAMBOREE SPORT. SPEND QUALITY TIME TOGETHER WITHOUT SPENDING A BUNDLE.

Weekends call for family fun. Time to jump in your Jamboree Sport and head out for adventure. Yet you'll enjoy the conveniences of home, like a fully equipped galley, comfortable furniture and restful beds. The well-designed floor plans afford space for a family with lots of stuff. And all this comes at an entry-level price. But you'd never guess it – Jamboree Sport looks snazzy from its stylish wheel covers outside to the handsome fabrics within.

Quality



There's no cutting corners. Skilled craftsmen build every Fleetwood RV for maximum durability and longevity.



JAMBOREE SPORT



WHY BUY JAMBOREE SPORT?

Great Looks at a Value Price

It looks stylish with its glossy fiberglass exterior and one-piece molded fiberglass front cap. But it's our most affordable Class C motor home.



Jamboree Sport 31W shown in Loden interior décor with Windsor Birch wood cabinetry.



Child Seat Safety Tether (select models) helps safeguard your youngest passenger. The steel cable loop holds your child's car seat firmly in the lounge chair.



The Cabover Bunk with TV is not only a comfortable double-size bed, it's a quiet place to hang out. Or, you can watch TV on the optional 19" LCD widescreen TV with a remote and DVD player. Put on a movie, stretch out and enjoy.

Safety is Built Right In

We provide peace of mind with front driver and passenger air bags, 4-wheel disc brakes, seat belts with pre-tensioners, and more.

Family-Friendly Galley

The fully equipped kitchen makes it easy to feed your family, with ample storage and a roomy dinette.

Space to Stretch Out

Thanks to Jamboree Sport's clever design, there's enough space for everyone to have their own. That keeps family peace.

Six Floor Plans

Choose the layout you like, ranging from 23 feet to 32 feet. Whatever size your family, there's a Jamboree Sport to fit your needs.



The Galley includes everything you need to prepare a family feast: a 6 cu. foot refrigerator, three-burner stove, oven, microwave, large stainless steel sink, and high-rise faucet.

ELBOW ROOM FOR YOUR WHOLE BODY.

Jamboree Sport is cleverly designed to provide you with lots of space for relaxing, sleeping and eating. The galley contains roomy overhead cabinetry that can hold full-size plates, and full-extension drawers allow you to store pots and pans at the very back. There's plenty of room for your gear, too, with pass-through storage on select models.



The Dinette seats four, with enough room to avoid elbow wars. It's under a big picture window, perfect for watching the wildlife...squirrels, birds, or roving packs of kids.



The Dinette Table slides down easily to convert into a bed. Underneath, spacious storage compartments are the perfect place for games, pet food or toys.



A Comfy Bed for a tired camper is ready in a flash. Sweet dreams!



JAMBOREE SPORT



The Bathroom has to accommodate a whole family, so we gave it lots of counter space, a large medicine cabinet to hold your grooming supplies, a good-sized sink and shower, a china bowl toilet, and the most important thing....a lock on the door.



The Bedroom provides that precious commodity: privacy for parents. Pleated shades soften the moonlight, while mom and dad relax on a queen-size innerspring mattress (select models). Or, if you've got a big family or lots of friends, choose the 29V model with optional double bunk beds instead of the queen bed.

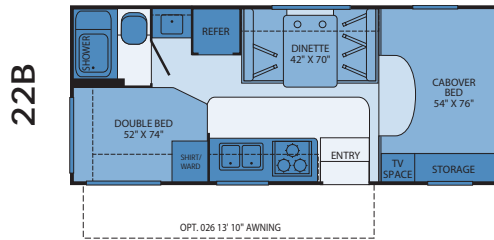


The Storage Bins are a handy way to keep your gear organized (models 26Q and 29V only). And once you unload your gear, throw some ice and drinks into the plastic bins for a self-serve refreshment station!

The Pass-Through Storage (select models) holds your coolers, grill, inflatable raft, or other jumbo items, and you can access your stuff from either side.

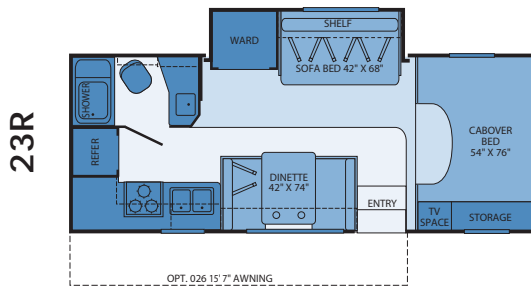


JAMBOREE SPORT FLOOR PLANS



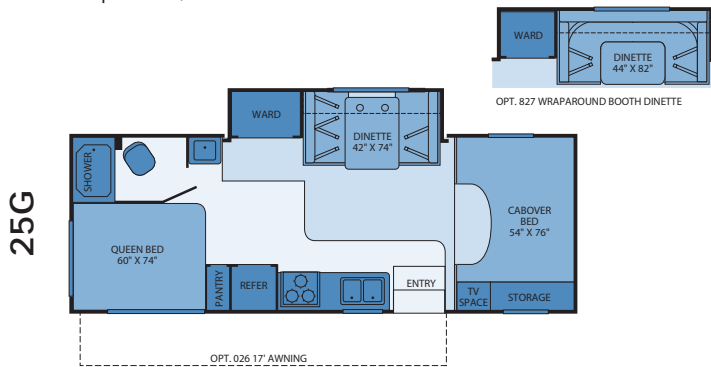
Interior Storage Capacity: 48 cu. ft.
Exterior Storage Capacity: 30 cu. ft.

- Compact floor plan has lots of sleeping locations
- Very easy to drive and park



Interior Storage Capacity: 47.5 cu. ft.
Exterior Storage Capacity: 8 cu. ft.

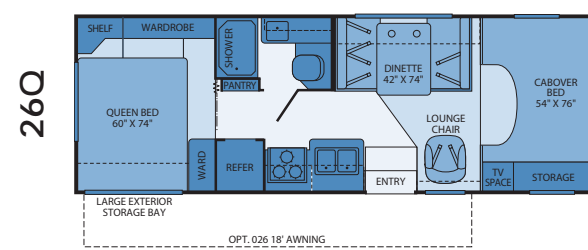
- The slide creates a large living area
- Spacious, self-contained bathroom



Interior Storage Capacity: 84 cu. ft.
Exterior Storage Capacity: 34 cu. ft.

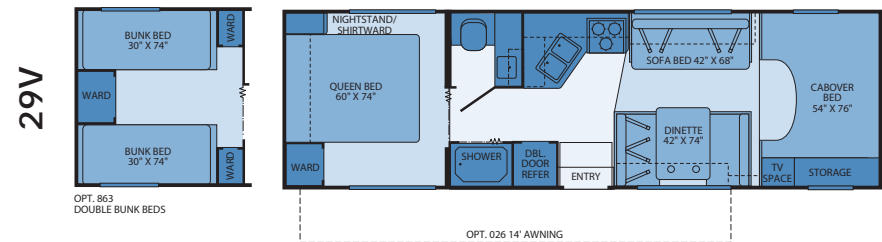
- Cozy U-shape dinette option
- Large queen bed
- Lots of interior storage capacity

Seatbelt configuration may vary depending on options chosen.



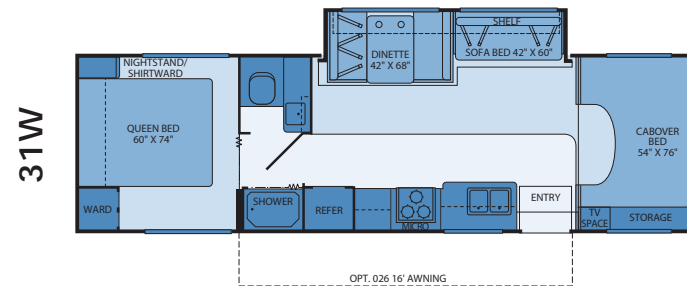
Interior Storage Capacity: 57 cu. ft.
Exterior Storage Capacity: 104 cu. ft.

- Huge pass-through rear storage compartment
- Great drivability and camp friendly



Interior Storage Capacity: 85 cu. ft.
Exterior Storage Capacity: 66 cu. ft.

- Largest, full featured floor plan without a slide-out
- Walk-around, large queen bed



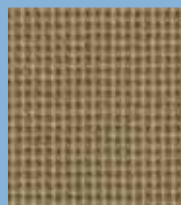
Interior Storage Capacity: 101 cu. ft.
Exterior Storage Capacity: 71 cu. ft.

- Huge sofa and dinette slide-out for maximum living space
- Walk-around, large queen bed

INTERIOR DÉCORS

LODEN

Living/Dining Room

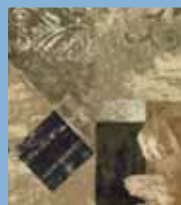


Sofa



Dinette Cushions

Bedroom



Bedsread



Headboard

ANTELOPE

Living/Dining Room



Sofa



Dinette Cushions

Bedroom



Bedsread



Headboard

WOOD FINISHES



Plantation Cherry



Windsor Birch


EXTERIOR COLORS

Loden



Antelope





WITH JAMBOREE, GETTING THERE IS ALL THE FUN.

You don't have to wait until you arrive at your destination to have fun in Jamboree. From the moment you leave your driveway, you have the comforts of home. Snack from the big refrigerator, relax on the Flexsteel® furniture, and enjoy the convenience of your residential-style bath. Getting away from it all is easy...just throw in your favorite foods, a few clothes and go! Jamboree is ready for adventure when you are.

Trust



More people trust Fleetwood. After all, we've spent over 50 years perfecting RVs, earning the loyalty of generations of RVers.



JAMBOREE



Why Buy Jamboree?

Just Like Home

The interior of Jamboree features comfy furniture, beautiful wood cabinetry, and a roomy bedroom that feel like home.



Jamboree 31M shown in Cabernet interior décor with Windsor Birch wood cabinetry.



The Sofa with Table comes in handy if you're feeding a big crowd (31M model only). Seat four at the dinette and two or three on the sofa, and it's suppertime! The sofa faces the dinette so you can still have family conversation during meals, and the table stows away afterwards.

JAMBOREE



The Under-Dinette Storage uses handy pull-out baskets to make it easy to retrieve your games, crafts or butterfly nets.

Many Floor Plans

Choose from six different floor plans and a wide range of options to build the Jamboree that's perfect for you.

Quality Construction

Fleetwood is known for excellent quality construction. You'll wish everything were built like your motor home.

Made for Adventure

Enjoy extended season camping, and tow your toys along with Jamboree's big towing capacity†.

Kitchen Conveniences

The family-friendly galley is stocked with extras such as a spice rack, sink covers, silverware drawer, cutting board and more.

THEY DON'T BUILD THEM LIKE THIS ANYMORE. BUT WE DO!

Fleetwood helped pioneer the industry over a half a century ago, and we still lead the way in building quality motor homes from the inside out. For example, the Vacu-bond® walls, floor and ceiling offer extreme durability – and provide excellent temperature and noise insulation too. From the solid wood drawers to the durable Flexsteel® furniture, you can count on quality in your Jamboree.



The Cabover Area, with patented slide over bunk, is a teenager's dream with the optional 19" LCD TV with remote and DVD player, all surrounded by a full-size mattress. Teens may never leave the bunk. If you don't need the extra sleeping space, select the optional Cabover Entertainment System featuring a 26" LCD TV with home theater system.



The Sofa Bed makes it okay to fall asleep on the couch. But this time, you'll have more space to stretch out, after the sofa back folds down.



The Dinette becomes a bed when the table swings down, and the cushions make into a mattress. Throw on some sheets or a sleeping bag, and call it a night. No eating in bed...save that for morning!



Under-Bed Storage provides a whole lotta space for you to fill with extra sheets, towels, games, crafts or whatever you like. You'll never think, "I wish I would have packed that..." because you can!



The Bathroom is deluxe, with a roomy shower, vanity cabinet, sink, mirror, medicine chest and china toilet. Best yet, you'll be comfortable thanks to the heat register and AC vent that keeps the temperature just right.



The Bedroom offers a luxurious queen-size, high-quality innerspring mattress and overhead storage for books, perfect to enjoy by the halogen reading lights. And you can each set your cup of cocoa upon his/her nightstands (select models).

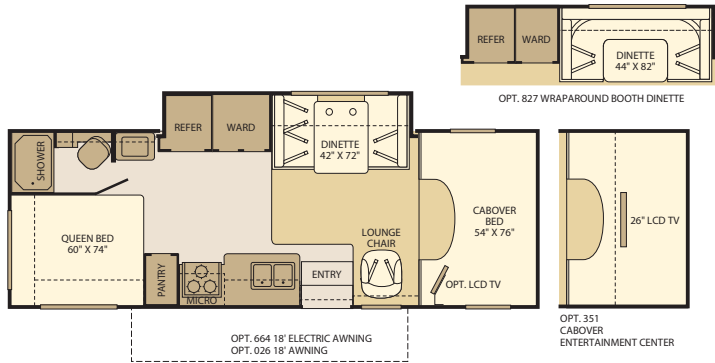


The Wardrobe and Desk Area do double-duty. The wardrobe holds your hanging clothes above, and folded clothing below. A big mirror shows you how your outfit looks. The desk area (31M model only) helps you take care of business, even if your business is mapping out your next adventure. It features an outlet that's ideal to charge your cell phone and a cabinet with shelves to organize important papers.



JAMBOREE FLOOR PLANS

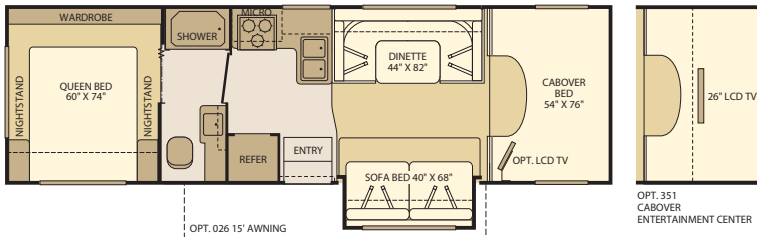
26J



Interior Storage Capacity: 122 cu. ft.
Exterior Storage Capacity: 32 cu. ft.

- Residential style U-shape dinette option
- Large queen bed
- Large wardrobe

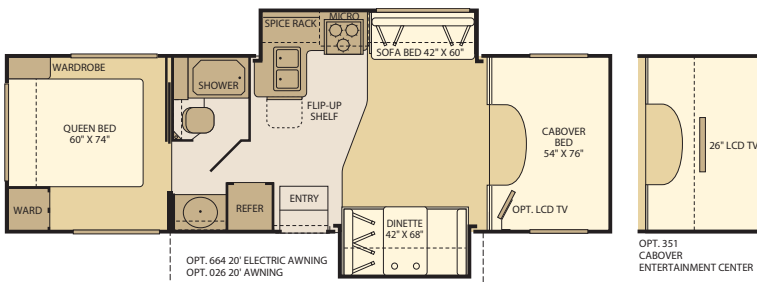
28T



Interior Storage Capacity: 105 cu. ft.
Exterior Storage Capacity: 67 cu. ft.

- Huge conversation area
- Lots of exterior storage space

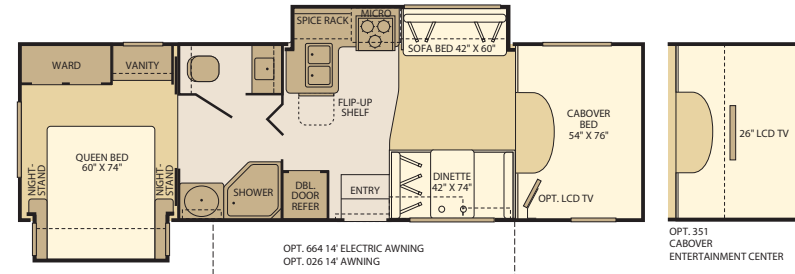
30H



Interior Storage Capacity: 70 cu. ft.
Exterior Storage Capacity: 78 cu. ft.

- Huge conversation space overlooks patio area
- Pass-through compartment in the rear

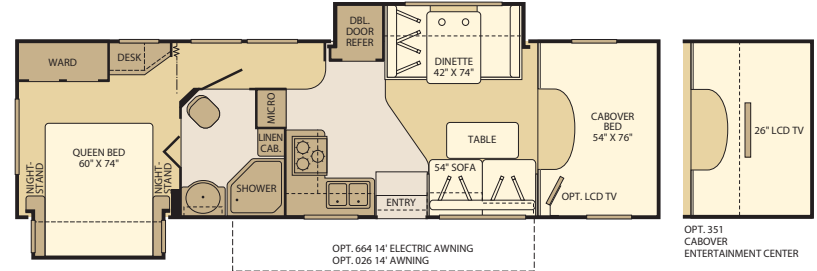
31K



Interior Storage Capacity: 99 cu. ft.
Exterior Storage Capacity: 57 cu. ft.

- Spacious open feel with L-shape galley
- Two lavvy sinks for maximum versatility

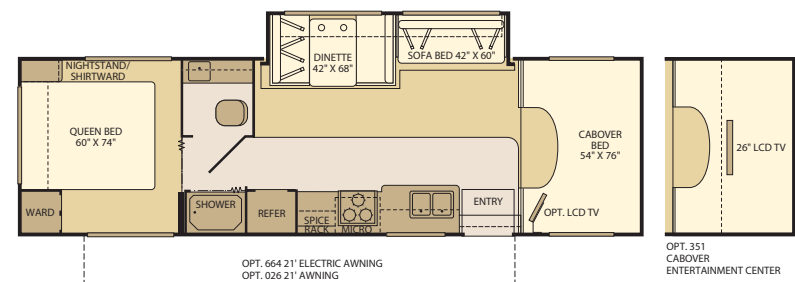
31M



Interior Storage Capacity: 122 cu. ft.
Exterior Storage Capacity: 71 cu. ft.

- Side aisle space and privacy
- Residential size bathroom

31W



Interior Storage Capacity: 101 cu. ft.
Exterior Storage Capacity: 71 cu. ft.

- Huge sofa and dinette slide-out for maximum living space
- Walk-around, large queen bed

Seatbelt configuration may vary depending on options chosen.

INTERIOR DÉCORS

CABERNET

Living/Dining Room



Sofa



Dinette Cushions



Ultraleather™ Driver & Front Passenger Seats (optional)

Bedroom



Bedspread & Headboard



Headboard & Throw Pillows

LAKE

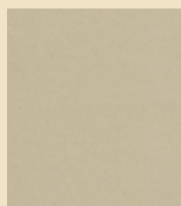
Living/Dining Room



Sofa



Dinette Cushions



Ultraleather™ Driver & Front Passenger Seats (optional)

Bedroom



Bedspread & Headboard



Headboard & Throw Pillows

PEBBLE BEACH

Living/Dining Room



Sofa



Dinette Cushions



Ultraleather™ Driver & Front Passenger Seats (optional)

Bedroom



Bedspread & Headboard



Headboard & Throw Pillows

WOOD FINISHES



Plantation Cherry



Windsor Birch

JAMBOREE

Cabernet



Lake



Pebble Beach





JAMBOREE GT GETS ALL DRESSED UP.

Sure, it's beautiful, but there's more to Jamboree GT than meets the eye. It offers features that are both sophisticated and practical, such as Ultraleather™ driver and passenger seats, more luxurious fabrics and upgraded carpeting. There's more of everything: more handy features, more space, and more overhead storage. And, thanks to the water filtration system, you can cook, brush your teeth and shower with clean, filtered water. That's Jamboree GT, the top of the Jamboree line.

Passion



We're truly passionate about the RV lifestyle. Fleetwood was founded by RV enthusiasts, and that tradition continues today.



JAMBOREE GT



Jamboree GT 31W shown in Ebony interior décor with Plantation Cherry wood cabinetry.

Why Buy Jamboree GT?

Upscale Styling

Everything's more deluxe, from the Alcoa® aluminum wheels, to the optional full-body paint, to the interior décor.



The Driver's Cockpit makes your long drive a pleasure, with a luxurious Ultraleather™ Flexsteel® driver's seat with armrests, and integrated cupholders for that steaming cup o' joe. The miles go by fast thanks to a CD/DVD player, and AM/FM radio that's ready for your MP3 player. If you're into satellite radio, an option is available.



The Color Back-Up Monitor (optional) helps you maneuver with ease. You can also hear directions from your assistant thanks to one-way audio.

JAMBOREE GT

Upgraded Galley

Enjoy a larger refrigerator, a convection microwave, a whole coach water filtration system and more.

Tons of Exterior Storage

There's room for your cooler, camping chairs, fishing gear, fire pit and more with basement storage.

Extended Season Camping

Because the holding tanks are heated and enclosed, you can enjoy the great outdoors in any season.

Expansive Space

All models have a single or double slide-out to give you more space to relax in the great indoors.

GREAT MEALS START WITH A GREAT GALLEY.

With a galley like this, you can enjoy home cooked meals no matter how far you are from home. Jamboree GT helps out with great appliances, such as a convection microwave that cooks fast and bakes like an oven. After all, a batch of hot, fresh cookies tastes even better on vacation!



The Galley features a Dometic® refrigerator that's 30% larger, holding 8 cubic feet of your favorite foods. It's fully equipped with high-quality appliances and a few extra surprises, such as a knife rack and pull-out wire baskets for storage.



The Dinette is upholstered in such nice fabric, you may be afraid to eat there. Don't worry, its good looks are highly durable. The picture window lets you enjoy dinner with a view that changes as you travel.



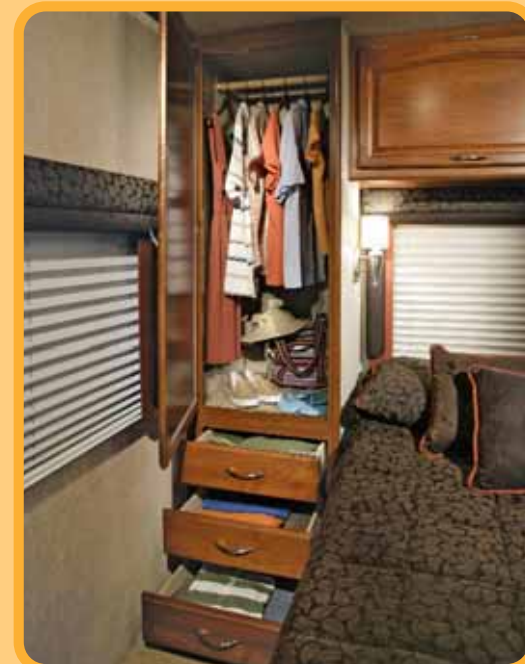
More Overhead Storage on the Jamboree GT means you can pack more stuff! You can adjust the shelves to accommodate your things, and they'll stay in place better thanks to the shelf lining.



The Bathroom features ample counter space next to the sink so it's easier to wash your hands or shave. In fact, everything in here is designed for your convenience, from the towel bars to the toilet paper holder that's recessed so it won't catch on your clothing.

Jamboree GT includes something invisible, yet important: lots of space. All of the models come either with single or double slide-outs, creating more room instantly. That kind of real estate is especially beneficial in the bedroom, where many competitors' models feel closed in. Jamboree GT gives you a spacious, private place to spread out and relax.

The Bedroom boasts a spacious, queen-size innerspring mattress with a plush comforter and pillow shams. Just pull down the day/night pleated shades for an afternoon nap, or to block out the full moon at night.

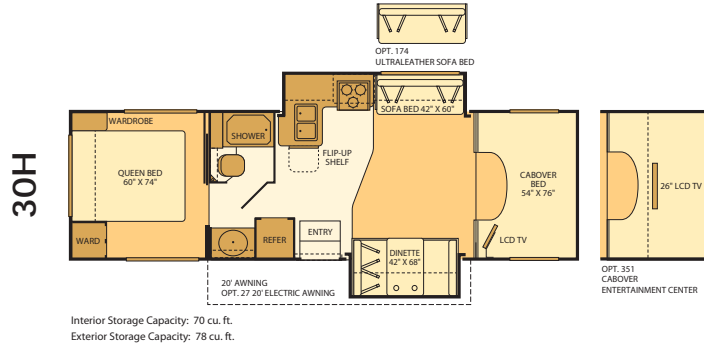


The Mirrored Wardrobe keeps your clothing neatly organized. Two roomy areas hold shirts and pants, while drawers below keep his and her socks separated.

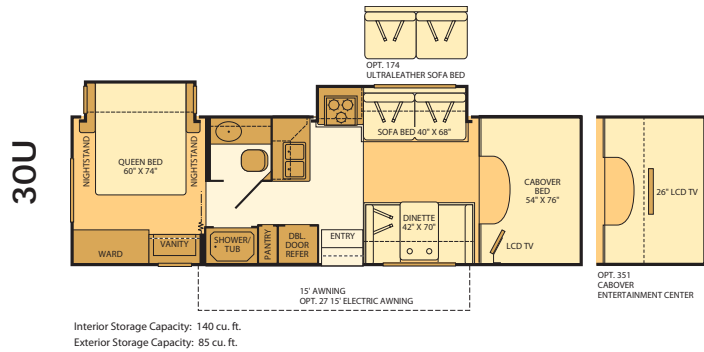


JAMBOREE GT

JAMBOREE GT FLOOR PLANS

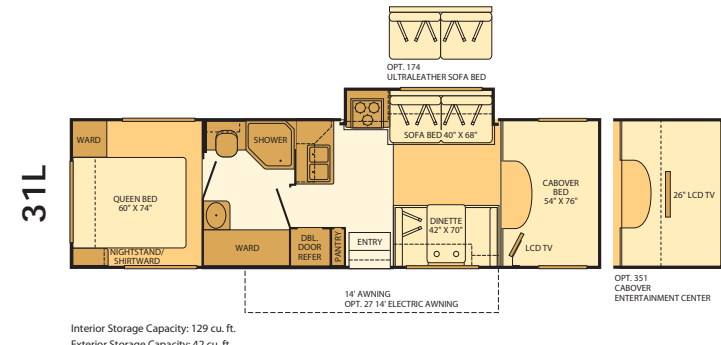


- Huge conversation space overlooks patio area
- Pass-through compartment in the rear

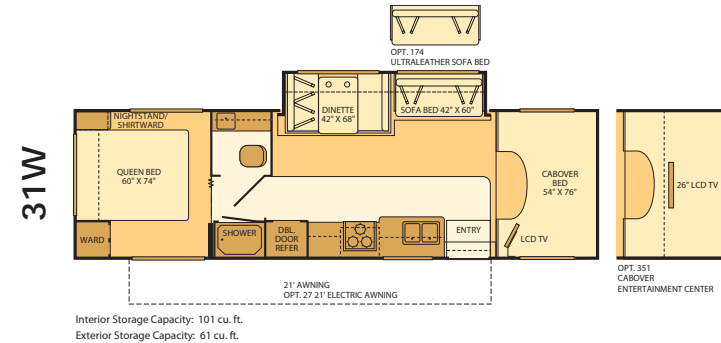


- Spacious open feel with L-shape galley
- Queen island bed with large wardrobe

Seat belt configuration may vary depending on options chosen.



- Conversation area
- Walk-around, large queen bed



- Huge sofa and dinette slide-out for maximum living space
- Walk-around, large queen bed

EXTERIOR COLORS - FIVE FULL BODY OPTIONS

For standard exterior choices, visit our website at www.fleetwoodrv.com.

Blue Topaz



Silver Leaf



Platinum



INTERIOR DÉCORS

SPA

Living/Dining Room



Sofa



Dinette Cushions



Ultraleather™ Driver & Front Passenger Seats, Sofa (optional)

Bedroom



Bedspread & Headboard



Accent Fabric



Throw Pillows

BLUE TOPAZ

Living/Dining Room



Sofa



Dinette Cushions



Ultraleather™ Driver & Front Passenger Seats, Sofa (optional)

Bedroom



Bedspread & Headboard



Accent Fabric



Throw Pillows

EBONY

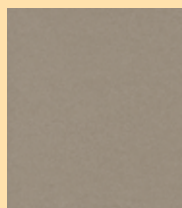
Living/Dining Room



Sofa

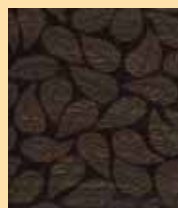


Dinette Cushions



Ultraleather™ Driver & Front Passenger Seats, Sofa (optional)

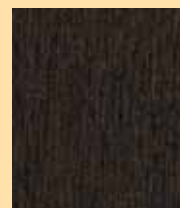
Bedroom



Bedspread & Headboard



Accent Fabric



Throw Pillows

Satin Steel



Raceway Red



WOOD FINISHES



Plantation Cherry



Windsor Birch

Service



Help is nearby. When you need an upgrade or repair, you'll find facilities all across North America and more than 1,000 dealers ready to assist you.

WATCH YOUR STUFF DO A DISAPPEARING ACT.

With lots of exterior storage, your cargo gets stowed away, safe and organized. There's room for the gear you need for fishing, biking, boating, you name it. But you probably like to relax sometimes, too. Good thing there's room for camp chairs and a portable fire pit.



The Exterior Entertainment Center (optional on GT and select Jamboree models) lets you add your own soundtrack to the outdoors. It includes an AM/FM radio with CD player and weather-resistant speakers. Let the crickets chirp with the Beatles!



The Exterior Shower (Jamboree and GT models) is the perfect antidote to muddy waders, sandy dog paws and frog-catching kids. Just rinse them off so the dirt stays outside.



The Rear Fuel Fill (select Jamboree and GT models) allows you to pull into any pump at the gas station and refuel.



Abundant Storage means you don't have to trim your packing list. Pack your tackle box, shade tent and other jumbo items too.



The EZ Store Compartment (select Jamboree and GT models) is great for bigger gear. It's called EZ because the compartments move with the slide-out, so you don't have to stoop underneath to get your stuff.

EXTERIOR FEATURES - JAMBOREE SPORT

- 1 Drip Rail Moldings** channel water off the Sport at the front and rear, preventing streaks on the sidewalls.
- 2 Powder-Coated Steel Running Boards** are sleek and stylish.
- 3 One-Piece Molded Fiberglass Front Cap** is aerodynamic and attractive.
- 4 Patio Awning** (optional) provides outdoor shade on a sunny day.



Jamboree Sport shown in Antelope exterior graphics.

JAMBOREE

- 1 Basement Storage** gives you a ton of room to store gear and toys.
- 2 Heated Holding Tanks** help prevent freezing for extended season camping.
- 3 Luggage Doors** feature single-paddle latches with gas-assist struts so they can be opened with one hand, and stay open on their own.
- 4 Power Entry Step** automatically extends so you don't have to manually pull the step out every time you park.



Jamboree shown in Cabernet exterior graphics.

CONSTRUCTION DETAIL

- 1 FLEETWOOD'S TUFF-PLY ROOFING TECHNOLOGY** is one of the most durable roofing materials on the market and also resists radiation by reflecting sunlight to reduce chalking. White roof material minimizes heat build-up, keeping the temperature cool and comfortable.
- 2 RELIABLE TUFFPEX PLUMBING** runs throughout each vehicle creating a durable seal on all internal tubing. TuffPEX plumbing is tough, can withstand cold temperatures, is flexible and corrosion resistant. The TuffPEX system is an industry leader in quality plumbing.
- 3 TUFF-COAT® FIBERGLASS COMPOSITE** resists UV rays, cracks and impacts. Fleetwood uses one seamless, solid piece of exclusive Tuff-Coat® fiberglass composite for each outer wall.
- 4 VACU-BOND® SIDEWALLS, FLOORS AND CEILINGS** ensure a strong, weather-resistant structure, framed in aluminum or steel. The Vacu-bond® process is unmatched by many competitors.
- 5 HIGH DENSITY BLOCK FOAM INSULATION** is precisely cut to fit between framing members. This insures maximum insulation throughout the vehicle.



Drawings are for illustrative purpose only to highlight aspects of motor home construction. Actual motor home design depends on model and is subject to change.

SAFETY FIRST. AND LAST. AND EVERYWHERE IN BETWEEN.

Fleetwood's team of engineers has incorporated dozens of safety features into Jamboree. For example, each model is fully equipped with multiple seat belts with pre-tensioners, front driver and passenger air bags, 4-wheel disc brakes with 4-wheel ABS, a fire extinguisher and smoke detector. If you are traveling with children, you'll appreciate the heavy-duty entry door latch that has been designed to keep you safe and give you more peace of mind.



Safety



You've got precious cargo. So we've engineered dozens of innovative safety features into our motor homes to give you more peace of mind.

JAMBOREE GT

- 1 Full-Body Paint** (optional) gives an upscale look with its hard-wearing, high-gloss finish.
- 2 Exterior Awning** creates a ready-made "front porch" for you to relax in the shade.
- 3 Alcoa® Aluminum Wheels** let you roll in style.
- 4 Power Mirrors** are heated to remove condensation, steam or fog.



Jamboree GT shown in Satin Steel optional full-body paint.



2008 JAMBOREE SPORT

STANDARD FEATURES

INTERIOR

Throughout

- Complete TuffPEX Plumbing System
- 12V Water Pump, Demand Operation
- 13,000 BTU Conventional Air Conditioner (22B, 23R, 25G)
- 13,000 BTU Ducted Air Conditioner (26Q)
- 15,000 BTU Ducted Air Conditioner (29V, 31W)
- 30,000 BTU Furnace, Wall Mounted Thermostat
- 6 Gallon Water Heater, Electronic Ignition, Propane
- Hardwood Overhead Cabinet Doors w/Raised Panel
- Auxiliary Battery, Disconnect Switch on Monitor Panel
- Deluxe Roller Bearing, Full Extension Drawer Guides & Transit-Ship Locks
- Water Pump w/On/Off Switches at Galley & Lavy
- Quality Constructed Furniture by Flexsteel®
- Water Heater Bypass Valve Fresh Water System Winterization
- Central Monitor Panel
- GFI Circuit Protection
- Pleated Shades in Living Room & Bedroom

Driver Convenience

- 3 Point Seat Belts at Driver & Front Passenger Seats
- In-Dash AM/FM/Radio w/CD Player & 4 Speakers
- Power Windows & Door Locks
- 54" X 76" Cabover Bed with Privacy Curtain, Roof Vent & Sliding Side Windows
- Cabover Bunk Ladder
- Driver/Front Passenger Airbag Supplemental Restraint System
- Cockpit Area w/Tilt Wheel, Cruise Control, Dome Light, Beverage Cup Holders, Map Pocket

Living Room

- Ceiling Lights w/Wall Switches (Entry & Bath)
- Dinette w/2 Cup Holders, Convertible for Sleeping
- Sofa Bed (23R, 29V, 31W)
- Swivel Base Lounge Chair w/Dual Lock Position (26Q)

Galley

- 3 Burner Range w/High Output/Piezo Ignitor & Oven
- Dometic® 6 cu.ft. Refrigerator/Freezer
- Real Wood Drawers
- Microwave Oven w/Electronic Touch Pad
- Raised Panel Refrigerator Inserts
- Rangehood w/Light & Fan
- Residential Size Double Bowl Sink

Bedroom

- Bedspread w/Reverse Pillow Shams
- Roof Vent (Select Models)
- Wall Space for TV w/AC Receptacle & Cable Jack
- Decorative Reading Lights
- Queen Bed w/Innerspring Mattress (Select Models)

Bathroom

- Bath Door w/Residential Passage Lock and Towel Bars
- China Bowl Toilet w/Hand Sprayer
- Medicine Cabinet w/Wood Construction
- Shower Head w/Flexible Hose Extension
- Skylight/Roof Vent w/12V Fan
- Wall Mounted Mirror
- Molded ABS Shower/Tub w/Surround
- Residential Style Faucet w/Large Sink

EXTERIOR

Throughout

- High Gloss Tuff-Coat® Smooth Fiberglass Exterior
- Large 1" (Inside Diameter) Water Tank Drain
- Sewer Hose Compartment
- EZ Glide® Slide-Out Room (Select Models)
- Debris Awning w/All Slide-Out Rooms
- Trailer Hitch w/7 Pin Electrical Hook-Up†
- Auxiliary Emergency Start Assist Switch on Dash
- Deluxe Wheel Covers
- 12V Auxiliary Battery

Body Structure

- One-Piece Molded Fiberglass Front End Cap
- Vacu-bond® Hull Lamination Process
- Vacu-bond® Floor
- Royal Tuff-Ply Radius Roof w/Ducted A/C
- Sidewalls Framed with 1 1/2" Aluminum Tubing
- Corrosion Resistant Aluminum Tube Hull Framing
- Molded Rear Wheel Trim Flares
- Steel Powder Coated Rear Bumper
- Powder Coated, Steel Running Boards
- 26" Wide Radius Corner Entry Door w/Window

OPTIONS

INTERIOR

- Vinyl Flooring Throughout
- 19" LCD Widescreen TV w/Remote & DVD Player
- Satellite Radio Ready
- Whole Coach Water Filtration System
- Power Roof Fan-Tastic® Vent Fan
- Double Bunk Beds w/Cushions (29V)
- Glass Shower Door Enclosure (Select Models)

EXTERIOR

- Dual Pane Windows
- Onan® 4.0kW Microquiet Generator
- Patio Awning
- Full Size Spare Tire w/Carrier (Select Models)
- Full Size Tire (Select Models)
- Holding Tank Heater (Select Models)
- Rear Ladder
- Rear Vision Camera
- Wash Unit w/Faucet, Flexible Shower Hose (Select Models)
- Dual 6V Deep Cycle Auxiliary Batteries w/Slide Tray
- Stainless Steel Wheel Liners
- Power Electric Step
- Breakaway Side Mirrors w/Power Adjust & Heat Control

2008 JAMBOREE

STANDARD FEATURES

INTERIOR

Throughout

- Complete TuffPEX Plumbing System
- 12V Water Pump, Demand Operation
- 15,000 BTU Ducted Air Conditioner
- 30,000 BTU Furnace, Wall Mounted Thermostat
- 6 Gallon Water Heater, Electronic Ignition, Propane
- Arch Hardwood Overhead Cabinet Doors w/Raised Panel
- Auxiliary Battery, Disconnect Switch on Monitor Panel
- Carpet w/Pad & Vinyl Flooring in Galley, Lavy & Entry
- Deluxe Roller Bearing, Full Extension Drawer Guides & Transit-Ship Locks
- Water Pump Controller w/On/Off Switches at Galley, Lavy & Service Compartment
- Quality Constructed Furniture by Flexsteel®
- Water Heater Bypass Valve Fresh Water System Winterization
- Central Monitor Panel
- GFI Circuit Protection

Driver Convenience

- 3 Point Seat Belts at Driver & Front Passenger Seats
- In-Dash AM/FM/Radio w/CD Player & 4 Speakers
- Power Windows & Door Locks
- 54" X 76" Cabover Bed with Patented Slider Bunk Operation, Privacy Curtain, Roof Vent & Sliding Side Windows
- Cabover Bunk Ladder
- Flexsteel® Adjustable/Reclining Bucket Seats w/Armrest (Ford®)
- Driver/Front Passenger Airbag Supplemental Restraint System
- Cockpit Area w/Tilt Wheel, Cruise Control, Dome Light, Beverage Cup Holders, Map Pocket

Living Room

- Ceiling Lights w/Wall Switches (Entry & Bath)
- Day/Night Pleated Shades
- Dinette w/2 Cup Holders, Convertible for Sleeping
- Large Viewing Window at Dinette
- Sofa Bed w/Armrests
- Swivel Base Lounge Chair w/Dual Lock Position (26J)

Galley

- 3 Burner Range w/High Output/Piezo Ignitor & Oven
- Decor Wall Border
- Dometic® 6 cu.ft. Refrigerator/Freezer
- Real Wood Drawers
- Flip-Up Countertop Extension (Select Models)
- Kitchen Convenience Package: Spice Rack, Paper Towel Holder, Sink Cover/Cutting Board & Silverware Drawer
- Microwave Oven w/Electronic Touch Pad
- Convection Microwave Oven (Select Models)
- Raised Panel Refrigerator Inserts
- Rangehood w/Light & Fan
- Residential Size Double Bowl Sink w/Single Lever Faucet

Bedroom

- Bedspread w/Reverse Pillow Shams
- Night Pleated Shades
- Roof Vent (Select Models)
- Halogen Reading Lights
- Queen Bed w/Innerspring Mattress

Bathroom

- Bath Door w/Residential Passage Lock and Towel Bars
- China Bowl Toilet w/Hand Sprayer
- Medicine Cabinet w/Wood Construction
- Shower Head w/Flexible Hose Extension
- Skylight/Roof Vent w/12V Fan
- Wall Mounted Mirror (Select Models)
- Molded ABS Shower/Tub w/Surround
- Residential Style Metal Faucet w/Large Sink
- Glass Shower Door Enclosure (Select Models)
- Folding Shower Door Enclosure (Select Models)

EXTERIOR

Throughout

- High Gloss Tuff-Coat® Smooth Fiberglass Exterior
- Outstanding Exterior Graphics and Styling
- Onan® 4.0kW Microquiet Generator
- Large 1" (Inside Diameter) Water Tank Drain
- Rear Ladder
- Aluminum Basement Truss System
- Sewer Hose Compartment
- Utility Compartment w/Exterior Shower & Holding Tank Dump Valves
- EZ Glide® Slide-Out Room and Compartment (Select Models)
- Debris Awning w/All Slide-Out Rooms
- Trailer Hitch w/7 Pin Electrical Hook-Up†
- Auxiliary Emergency Start Assist Switch on Dash
- 12V Auxiliary Battery
- Rear Fuel Fill (Select Models)
- Stainless Steel Wheel Liners

Body Structure

- Vacu-bond® Hull Lamination Process
- Vacu-bond® Floor
- Royal Tuff-Ply Radius Roof w/Ducted A/C
- Sidewalls Framed with 1 1/2" Aluminum Tubing
- Corrosion Resistant Aluminum Tube Hull Framing
- Molded Rear Wheel Trim Flares
- Molded Rear Wall/Ceiling Transition Trim
- Steel Powder Coated Rear Bumper
- Heated Holding Tanks in Basement Compartments
- One-Piece Molded Fiberglass Front End Cap
- 26" Wide Radius Corner Entry Door w/Window
- Full Basement Exterior

Storage

- Molded Cross Link Polyethylene Battery Compartment Container & Lid
- Insulated Locking Luggage Doors w/Thumb Latch

OPTIONS

INTERIOR

- 15,000 BTU A/C with Heat Pump
- Linoleum Throughout
- Custom Dash Appliqués
- Ultraleather™ Driver/Front Passenger Seats
- Cabover Entertainment System: 26" LCD TV w/Home Theater
- 19" LCD Widescreen TV w/Remote & DVD Player
- Satellite Radio Ready
- Drinking Water Filtration System
- Power Roof Fan-Tastic® Vent Fan
- Glass Shower Door Enclosure (Select Models)

EXTERIOR

- Exterior Entertainment Center w/AM/FM/CD Player and Auxiliary Speaker, Coax Cable & 12V/110 Receptacles (Except 26J)
- Patio Awning
- Electric Patio Awning
- Full Size Spare Tire w/Carrier (26J)
- Full Size Spare Tire (Select Models)
- Dual Pane Windows
- Toilet Tank San-T-Flush™ System
- Dual 6V Deep Cycle Auxiliary Batteries
- Breakaway Side Mirrors w/Power Adjust & Heat Control
- Rear Vision Camera

2008 JAMBOREE GT

STANDARD FEATURES

INTERIOR Throughout

- Complete TuffPEX Plumbing System
- 12V Water Pump, Demand Operation
- 15,000 BTU Ducted Air Conditioner
- 30,000 BTU Furnace, Wall Mounted Thermostat
- 6 Gallon Water Heater, Electronic Ignition, Propane
- Arch Hardwood Overhead Cabinet Doors w/Raised Panel
- Auxiliary Battery, Disconnect Switch on Monitor Panel
- Carpet w/Pad & Vinyl Flooring in Galley, Lavy & Entry
- Deluxe Roller Bearing, Full Extension Drawer Guides & Transit-Ship Locks
- Water Pump Controller w/On/Off Switches at Galley, Lavy & Service Compartment
- Quality Constructed Furniture by Flexsteel®
- Water Heater Bypass Valve Fresh Water System Winterization
- Central Monitor Panel
- GFI Circuit Protection
- AC/DC Load Center w/12V Converter/Battery Charger

Driver Convenience

- 3 Point Seat Belts at Driver & Front Passenger Seats
- In-Dash AM/FM/Radio w/CD/DVD Player & 4 Speakers
- Power Windows & Door Locks
- 54" X 76" Cabover Bed with Patented Slider Bunk Operation, Privacy Curtain, Roof Vent & Sliding Side Windows
- Cabover Bunk Ladder
- Driver/Front Passenger Airbag Supplemental Restraint System
- Driver/Front Passenger Ultraleather™ Flexsteel® Adjustable/Reclining Bucket Seats w/Armrest
- Custom Dash Appliqués
- Cockpit Area w/Tilt Wheel, Cruise Control, Dome Light, Beverage Cup Holders, Map Pocket

Living Room

- 19" LCD TV in Cabover with Remote
- Ceiling Lights w/Wall Switches (Entry & Bath)
- Day/Night Pleated Shades
- Dinette w/2 Cup Holders, Convertible for Sleeping
- Large Viewing Window at Dinette
- Sofa Bed w/Armrests

Galley

- 3 Burner Range w/High Output/Piezo Ignitor & Oven
- Decor Wall Border
- Dometic® 8 cu.ft. Refrigerator/Freezer
- Real Wood Drawers
- Flip-Up Countertop Extension (Select Models)
- Kitchen Convenience Package: Knife Holder, Spice Rack, Paper Towel Holder, Sink Cover and Cutting Board, Silverware Drawer
- Convection Microwave Oven
- Raised Panel Refrigerator Inserts

- Rangehood w/Light & Fan
- Residential Size Double Bowl Sink w/Single Lever Faucet
- Whole Coach Water Filtration System
- Soap Dispenser

Bedroom

- Bedsread w/Pillow Shams
- Night Pleated Shades
- Roof Vent (Select Models)
- Decorative Reading Lights
- Queen Bed w/Innerspring Mattress

Bathroom

- Bath Door w/Residential Passage Lock and Towel Bars
- China Bowl Toilet w/Hand Sprayer
- Medicine Cabinet w/Wood Construction
- Shower Head w/Flexible Hose Extension
- Skylight/Roof Vent w/12V Fan
- Wall Mounted Mirror
- Molded ABS Shower/Tub w/Surround
- Residential Style Metal Faucet w/Large Sink
- Glass Shower Door Enclosure

EXTERIOR Throughout

- High Gloss Tuff-Coat® Smooth Fiberglass Exterior
- Outstanding Exterior Graphics and Styling
- Onan® 4.0kW Microquiet Generator
- Large 1" (Inside Diameter) Water Tank Drain
- Rear Ladder
- Utility Compartment w/Exterior Shower & Holding Tank Dump Valves
- Aluminum Basement Truss System
- EZ Glide® Slide-Out Room and Compartment (Select Models)
- Debris Awning w/All Slide-Out Rooms
- Patio Awning
- Full Size Spare Tire (Select Models)
- Trailer Hitch w/7 Pin Electrical Hook-Up†
- Auxiliary Emergency Start Assist Switch on Dash
- Rear Fuel Fill (Select Models)
- Alcoa® Aluminum Wheels
- Dual 6V Deep Cycle Auxiliary Batteries

Body Structure

- Vacu-bond® Floor
- Vacu-bond® Hull Lamination Process
- Royal Tuff-Ply Radius Roof w/Ducted A/C
- Sidewalls Framed with 1 ½" Aluminum Tubing
- Corrosion Resistant Aluminum Tube Hull Framing
- Molded Rear Wheel Trim Flares
- Molded Rear Wall/Ceiling Transition Trim
- Steel Powder Coated Rear Bumper
- One-Piece Molded Fiberglass Front End Cap
- 26" Wide Radius Corner Entry Door w/Window
- Powder Coated Steel Running Boards w/Custom Molded Front Wheel Trims
- Heated Holding Tanks in Basement Compartments
- Full Basement Exterior

Storage

- Molded Cross Link Polyethylene Battery Compartment Container & Lid
- Painted Aluminum Skin Luggage Doors w/Strut Assist, Paddle Latches, Stainless Steel Hinges

OPTIONS

INTERIOR

- 15,000 BTU A/C with Heat Pump
- Cabover Entertainment System: 26" LCD TV w/Home Theater
- Satellite Radio Ready
- Ultraleather™ Sofa Bed

EXTERIOR

- Full-Body Paint
- Exterior Entertainment Center w/AM/FM/CD Player and Auxiliary Speaker, Coax Cable & 12V/110 Receptacles
- Toilet Tank San-T-Flush™ System
- Electric Awning (Full-Body Paint Only)
- Rear Vision Camera

SAFETY/CONVENIENCE

INTERIOR

- 10 ABC Fire Extinguisher
- Carbon Monoxide Detector/Alarm
- Exterior & Interior Entry Assist Handle
- Propane Detector/Alarm
- Smoke Detector/Alarm
- Multiple Seatbelt Locations

EXTERIOR

- 30 Amp, 30' Power Cord, Compartment Storage
- AC Duplex GFI Receptacle on Patio Side
- Amber Porch Light w/Interior Switch
- Automotive Safety Glass
- Breakaway Side Mirrors (Jamboree Sport and Jamboree)
- Breakaway Side Mirrors w/Power Adjust & Heat Control (Jamboree GT)
- Entry Door w/Screen Door & Deadbolt Lock
- High Mounted Large Taillights
- Hydraulic 4 Wheel Disk Brakes w/4 Wheel Anti-Lock Brakes
- Power Electric Step (Jamboree and Jamboree GT)
- Radius Tinted Windows

WEIGHTS AND MEASUREMENTS
JAMBOREE SPORT
FORD® E450/CHEVY® WORKHORSE™ CHASSIS

MODELS	22B CHEVY® EXPRESS	23R FORD® E450	25G	26Q	29V	31W
Engine Displacement (Liters)	6.0	6.8	6.8 / 6.0	6.8 / 6.0	6.8 / 6.0	6.8 / 6.0
Wheelbase (Inches)	139"	158"	176" / 177"	176" / 177"	198" / 199"	214" / 215"
GVWR (lbs) ¹	12,300	14,050	14,050 / 14,050	14,050 / 14,050	14,050 / 14,050	14,050 / 14,050
Front GAWR (lbs) ²	4,300	4,600	4,600 / 4,600	4,600 / 4,600	4,600 / 4,600	4,600 / 4,600
Rear GAWR (lbs) ²	8,600	9,450	9,450 / 9,450	9,450 / 9,450	9,450 / 9,450	9,450 / 9,450
GCWR (lbs) ³	15,800	19,050	19,050 / 17,550	19,050 / 17,550	19,050 / 17,550	19,050 / 17,550
Hitch Rating Weight (lbs) [†]	3,500	5,000	5,000 / 5,000	5,000 / 5,000	5,000 / 5,000	5,000 / 5,000
Tongue Weight (lbs) [†]	350	500	500 / 350	500 / 350	500 / 350	350 / 350
Fuel Capacity (gal)	35	55	55 / 55	55 / 55	55 / 55	55 / 55

DIMENSIONS & CAPACITIES

MODELS	22B	23R	25G	26Q	29V	31W
Overall Length ⁴	23' 2 1/2"	24' 1"	25' 11" / 26' 10"	27' 1" / 28' 0"	30' 1" / 31' 0"	31' 4" / 32' 3"
Overall Height (with A/C)	11' 4"	11' 4"	11' 4"	11' 4"	11' 4"	11' 4"
Overall Width (maximum) ^{5,6}	102"	102"	102"	102"	102"	102"
Interior Height (maximum)	82"	82"	82"	82"	82"	82"
Interior Width (maximum)	96"	96"	96"	96"	96"	96"
Fresh Water Holding Tank (gal)	30	30	30	30	30	30
Grey Water Holding Tank (gal)	36	36	37	32	37	37
Black Water Holding Tank (gal)	35	37	37	38	37	37
Water Heater Tank (gal)	6	6	6	6	6	6
Appliance Propane Tank (gal) (WC) ⁷	14	14	14	14	14	14

WEIGHTS AND MEASUREMENTS
JAMBOREE
FORD® E450/CHEVY® WORKHORSE™ CHASSIS

MODELS	26J	28T	30H	31K	31M	31W
Engine Displacement (Liters)	6.8 / 6.0	6.8 / 6.0	6.8 / 6.0	6.8 / 6.0	6.8 / 6.0	6.8 / 6.0
Wheelbase (Inches)	190" / 191"	206" / 207"	206" / 207"	214" / 215"	218" / 219"	214" / 215"
GVWR (lbs) ¹	14,050 / 14,050	14,050 / 14,050	14,050 / 14,050	14,050 / 14,050	14,050 / 14,050	14,050 / 14,050
Front GAWR (lbs) ²	4,600 / 4,600	4,600 / 4,600	4,600 / 4,600	4,600 / 4,600	4,600 / 4,600	4,600 / 4,600
Rear GAWR (lbs) ²	9,450 / 9,450	9,450 / 9,450	9,450 / 9,450	9,450 / 9,450	9,450 / 9,450	9,450 / 9,450
GCWR (lbs) ³	19,050 / 17,550	19,050 / 17,550	19,050 / 17,550	19,050 / 17,550	19,050 / 17,550	19,050 / 17,550
Hitch Rating Weight (lbs) [†]	5,000 / 5,000	5,000 / 5,000	5,000 / 5,000	5,000 / 5,000	5,000 / 5,000	5,000 / 5,000
Tongue Weight (lbs) [†]	350 / 350	350 / 350	350 / 350	350 / 350	350 / 350	350 / 350
Fuel Capacity (gal)	55 / 55	55 / 55	55 / 55	55 / 55	55 / 55	55 / 55

DIMENSIONS & CAPACITIES

MODELS	26J	28T	30H	31K	31M	31W
Overall Length ⁴	27' 1" / 28' 0"	30' 6" / 31' 5"	30' 6" / 31' 5"	31' 4" / 32' 3"	32' 2" / 33' 1"	31' 4" / 32' 3"
Overall Height (with A/C)	11' 7"	11' 7"	11' 7"	11' 7"	11' 7"	11' 7"
Overall Width (maximum) ^{5,6}	102"	102"	102"	102"	102"	102"
Interior Height (maximum)	82"	82"	82"	82"	82"	82"
Interior Width (maximum)	96"	96"	96"	96"	96"	96"
Fresh Water Holding Tank (gal)	30	35	30	30	35	35
Grey Water Holding Tank (gal)	37	37	35	44	37	35
Black Water Holding Tank (gal)	37	37	35	30	37	35
Water Heater Tank (gal)	6	6	6	6	6	6
Appliance Propane Tank (gal) (WC) ⁷	14	14	14	14	14	14

WEIGHTS AND MEASUREMENTS

JAMBOREE GT

FORD® E450 CHASSIS

MODELS	30H	30U	31L	31W
Engine Displacement (Liters)	6.8	6.8	6.8	6.8
Wheelbase (Inches)	206"	206"	218"	214"
GVWR (lbs) ¹	14,050	14,050	14,050	14,050
Front GAWR (lbs) ²	4,600	4,600	4,600	4,600
Rear GAWR (lbs) ²	9,450	9,450	9,450	9,450
GCWR (lbs) ³	19,050	19,050	19,050	19,050
Hitch Rating Weight (lbs) [†]	5,000	5,000	5,000	5,000
Tongue Weight (lbs) [†]	350	350	350	350
Fuel Capacity (gal)	55	55	55	55

DIMENSIONS & CAPACITIES

MODELS	30H	30U	31L	31W
Overall Length ⁴	30' 6"	30' 6"	32' 2"	31' 4"
Overall Height (with A/C)	11' 7"	11' 7"	11' 7"	11' 7"
Overall Width (maximum) ^{5, 6}	102"	102"	102"	102"
Interior Height (maximum)	82"	82"	82"	82"
Interior Width (maximum)	96"	96"	96"	96"
Fresh Water Holding Tank (gal)	30	30	35	35
Grey Water Holding Tank (gal)	35	35	37	35
Black Water Holding Tank (gal)	35	35	37	35
Water Heater Tank (gal)	6	6	6	6
Appliance Propane Tank (gal) (WVC) ⁷	14	14	14	14

Liquid Weight Reference: Water (gal) = (8.3 lbs/3.8kgs) Fuel (gal) = 6.1 lbs/2.8 kgs) Propane (gal) = (4.2 lbs/1.9 kgs)

Metric Conversion: Multiply pounds x 0.453 to obtain kilograms. Multiply gallons x 3.785 to obtain liters. Multiply liters x 61 to obtain cubic inches.

- GVWR (Gross Vehicle Weight Rating) is the maximum permissible weight of this fully loaded motor home. The GVWR is equal to or greater than the sum of the (UVW) unloaded vehicle weight plus the (CCC) cargo carrying capacity*.
- GAWR (Gross Axle Weight Rating) is the maximum permissible loaded weight a specific axle is designed to carry.
- GCWR (Gross Combined Weight Rating) is the value specified by the motor home manufacturer as the maximum allowable loaded weight of this motor home with its towed vehicle. Towing and braking capacities may be different. Refer to Fleetwood and chassis manufacturer's manuals for complete information.
- Length measured from front bumper to rear bumper (excludes accessories).
- Excludes safety equipment and awnings.
- Motor homes feature a body-width over 96" which will restrict your access to certain roads. Before purchasing, you should research any state and/or province road laws which may affect your usage.
- Tank manufacturer's listed water capacity (WVC). Actual propane capacity is 80% of water listing as required by the safety code.

- The chassis manufacturer recommends the installation of a supplemental brake control system to activate the brakes on the vehicle or trailer you are towing. Hitch receiver ratings expressed are maximum for the hitch receiver installed and may require the purchase of additional equipment that is dependant on the weight of the towed load. Consult with hitch receiver manufacturer for further information.

N/A = Not available at time of printing.

*UVW and CCC are found on the cargo carrying capacity label in each RV.

IMPORTANT— PLEASE READ: Product information, photography and illustrations included in this publication were as accurate as possible at the time of printing. For further product information and changes, please visit our website at www.fleetwoodrv.com or contact your local Fleetwood dealer. Prices, materials, design and specifications are subject to change without notice. All weights, fuel, liquid capacities and dimensions are approximate. Fleetwood has designed its recreational vehicles to provide a variety of uses for its customers. Each vehicle features optimal seating, sleeping, storage and fluid capacities. The user is responsible for selecting the proper combination of loads (i.e. occupants, equipment, fluids, cargo, etc.) to ensure that the vehicle's capacities are not exceeded.

CHASSIS

Model: Ford® E450
Engine: 6.8L Triton V10
Torque: 420 lb-ft @ 3250 RPM
Alternator: 115 Amp
Horsepower: 305HP
Transmission: 5-Speed Automatic w/Overdrive

Model: Chevy® Express/Chevy® Workhorse™
Engine: 6.0L Vortec™ V8
Torque: 360 lb-ft @ 3200 RPM
Alternator: 145 Amp
Horsepower: 300HP
Transmission: 4-Speed Automatic w/Overdrive

Warranty



Exclusive RV ownercare warranty.
 See your Fleetwood dealer for details.

Jamboree

CLASS C



RV OWNERCARE*

Limited one-year/15,000-mile coach warranty and three-year/50,000-mile structural warranty, whichever occurs first, and it is fully transferable for the first 12 months. RV OWNERCARE is one of the RV industry's most comprehensive programs and includes systems, appliances, components and construction, with no deductible and no service charge. RV OWNERCARE coverage is provided from a company that will be around in the future to service your needs. See your nearest Fleetwood dealer for a full explanation of benefits and restrictions.

CONTACT US

To locate a dealer near you, visit our website at www.fleetwoodrv.com or call 1-800-444-4905. We can also be contacted at Fleetwood Customer Relations, P.O. Box 1007, Decatur, IN 46733.

FLEETWOOD TRAVELCADE CLUB

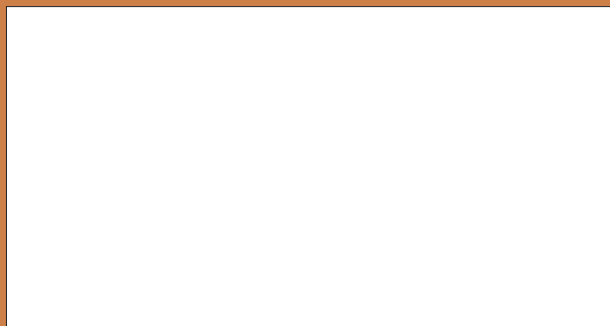
As a Fleetwood owner, you're eligible to become a member of the Fleetwood Travelcade Club. It's a perfect way to meet other Fleetwood owners who love to travel across America and share in the RV lifestyle. Call (877) 577-2560, or visit our website at www.fleetwoodrv.com/owners_clubs to learn more, and join the fun.



tread lightly!
LEAVING A GOOD IMPRESSION



YOUR LOCAL FLEETWOOD DEALER IS:



*For complete info see your Fleetwood dealer.

©2007. Fleetwood Enterprises, Inc.
Printed in the USA. Inventory Control Number JA08B2, 11/07.
Model Year 2008, Second Edition.

IMPORTANT—PLEASE READ

Product information, photography and illustrations included in this publication were as accurate as possible at the time of printing. For further product information and changes, please visit our website at www.fleetwoodrv.com or contact your local Fleetwood dealer. Prices, materials, design and specifications are subject to change without notice. All weights, fuel, liquid capacities and dimensions are approximate. Fleetwood has designed its recreational vehicles to provide a variety of uses for customers. Each vehicle features optimal seating, sleeping, storage and fluid capacities. The user is responsible for selecting the proper combination of loads (i.e. occupants, equipment, fluids, cargo, etc.) to ensure that the vehicles capacities are not exceeded.

WHY FLEETWOOD?



Quality

There's no cutting corners. Skilled craftsmen build every Fleetwood RV for maximum durability and longevity.



Trust

More people trust Fleetwood. After all, we've spent over 50 years perfecting RVs, earning the loyalty of generations of RVers.



Passion

We're truly passionate about the RV lifestyle. Fleetwood was founded by RV enthusiasts, and that tradition continues today.



Service

Help is nearby. When you need an upgrade or repair, you'll find facilities all across North America and more than 1,100 dealers ready to assist you.



Safety

You've got precious cargo. So we've engineered dozens of innovative safety features into our motor homes to give you more peace of mind.



Warranty

Exclusive RV ownercare warranty. See your Fleetwood dealer for details.

