

WindSPORT

2008



Class A Motorhome

FW Four Winds
INTERNATIONAL



COPPER RIDGE INTERIOR DECOR / CHERRY CABINETRY

UNLOCK A WORLD of travel possibilities! Now you can enjoy first-class comfort and elegant style while on the road in the Windsport Class A motorhome. You'll find a wide selection of innovative floorplans from which to choose.

THE SPACIOUS LIVING AREA in Model 36R (top) features a full 32" LCD television in the living room entertainment center and round free-standing dinette. It is also shown with optional Infiniss™ Leather driver and passenger captain's chairs and a hide-a-bed sofa with recliner. Other basement models are available with a standard 27" television or optional 32" LCD television in the front overhead.



COPPER RIDGE INTERIOR DECOR / GOLDEN MARLE CABINETRY

THE FULLY EQUIPPED KITCHEN (shown above) offers name brand appliances and convenience features to meet your food planning and preparation needs. The handy flip-up countertop extension gives you even more countertop space, and there is plenty of cabinet space to store food items and cookware.



CHOCOLATE CAFE INTERIOR DECOR / CINNAMON MAPLE CABINETRY



CHOCOLATE CAFE INTERIOR DECOR / CHERRY CABINETRY

These versatile non-slide, double and triple slide-out floorplans offer a spacious living area, fully equipped kitchen, cozy bedroom and bath area with all the conveniences of home.

THE KITCHEN in Model 31D (left) includes a microwave oven, three-burner, high-output cooktop with oven and double door refrigerator with raised panel inserts. It has a flip-up countertop extension that provides even more counterspace when preparing meals. There is plenty of cabinet storage for all of your food items, cookware and dishes.

WINDSPORT SEMI-BASEMENT MODELS are designed to meet a wide range of lifestyle needs—from the casual to the full-time recreational vehicle enthusiast. Model 32E (top) is shown with a standard both dinette, as well as optional Infiniss™ Leather hide-a-bed sofa, and driver and passenger captain's chairs.

This double slide-out model has opposing sofa and dinette slides, and is shown with an optional Infiniss™ Leather hide-a-bed sofa.

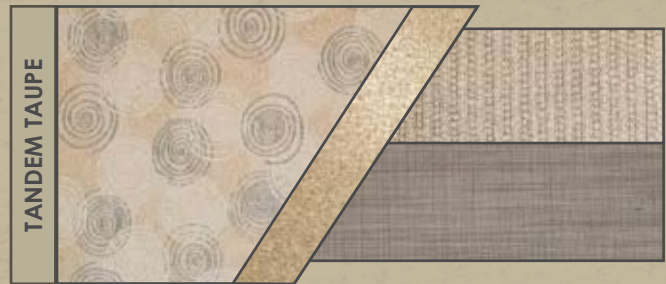


COPPER RIDGE INTERIOR DECOR / CHERRY CABINETRY

THE LIVING AREA in Model 36R (above) is perfect for those who like to entertain while traveling. This triple slide-out floorplan includes a round free-standing dinette with four chairs and two large windows that let in plenty of natural light.

The large 32" LCD television in the living room entertainment center allows you and your guests to watch television comfortably. A hide-a-bed sofa with a built-in reclining footrest provides additional seating and sleeping accommodations when needed.

Interior Decor





TANDEM TAUPE INTERIOR DECOR / GOLDEN MAPLE CABINETRY



CHOCOLATE CAFE INTERIOR DECOR / CHERRY CABINETRY



MASTER BEDROOM (top) features a queen-size bed and inner spring mattress with storage below. There is additional storage in the extra-deep bedroom cabinets and night stands.

BUNK BEDS are a popular feature with families traveling with children (left and above). These beds are a full 30" x 80", and are comfortable for both children and adults. The bunk area also includes a privacy curtain and 19" television with game adapters built into the wall opposite the bunk beds.

Exteriors



Standard graphics exterior



Copper Mist graphics/partial paint exterior



Arcadia Spice full-body paint exterior



Indian Summer graphics/partial paint exterior



Pearlstone full-body paint exterior



ALL NEW MEGA STORAGE offers more exterior storage than most Class A motorhomes. The extra-large rear storage compartment has convenient exterior doors for easy access. It also features recessed storage bins with lids and a campsite folding table.

INTRODUCING THE
Class A Sport Recreational Vehicle

NEW
34Y



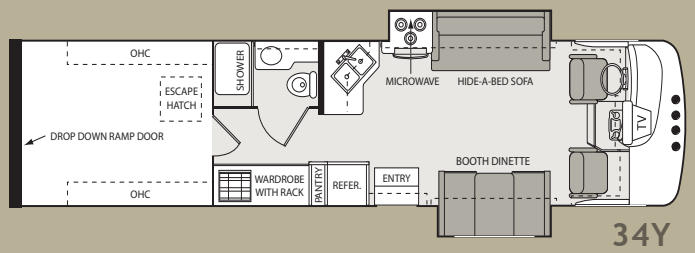
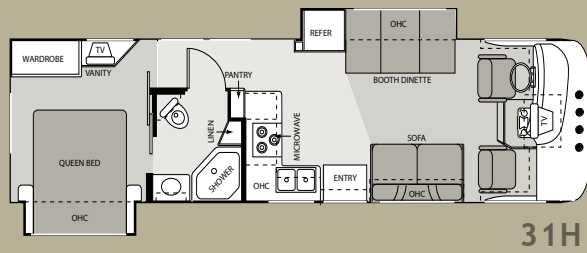
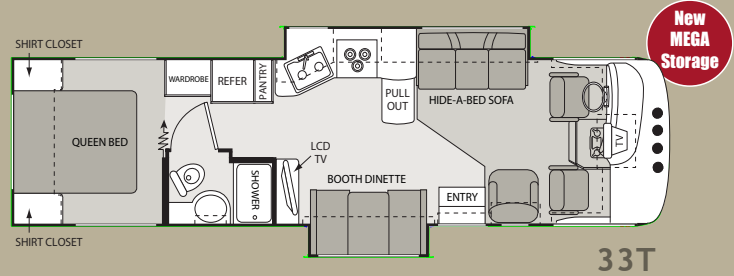
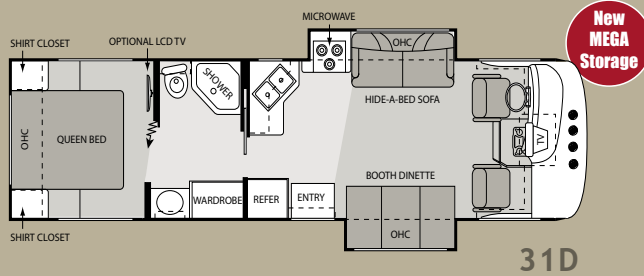
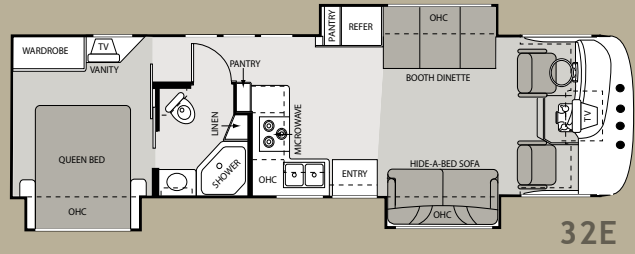
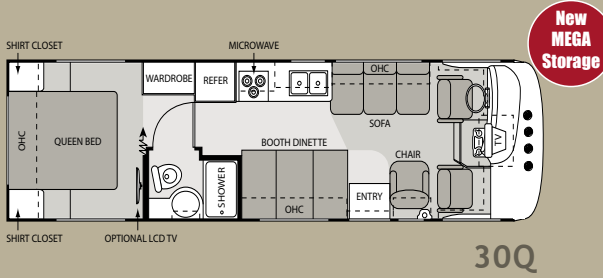
CHANGE THE WAY YOU PLAY with the WindSport Sport Recreational Vehicle. It combines a comfortable living area up front with a roomy cargo area in back. You can take your favorite sports vehicles or hobby equipment on the road—safely and securely. But that's not all!

THE VERSATILE CARGO AREA can be used as an additional area to entertain guests, as well as a sleeping area when additional accommodations are required. An electric drop-down queen-size bed with inner-spring mattress is locked into a wall mounted track. An electric control allows you to raise and lower the bed as needed.



AN OUTSIDE ENTERTAINMENT center (above right) is available with a 32" LCD television and remote stereo speakers; plus an AM/FM stereo with a compact disc player and speakers in the cargo area.

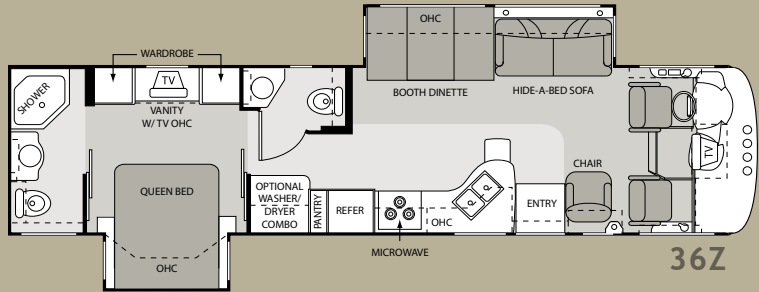
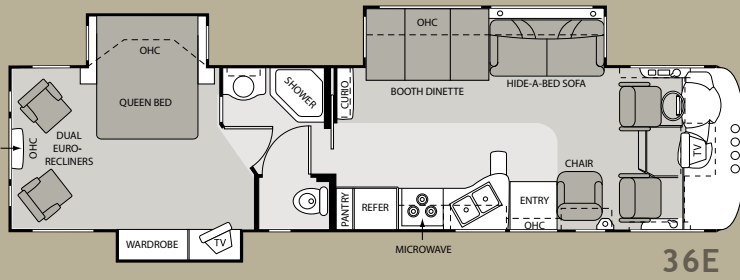
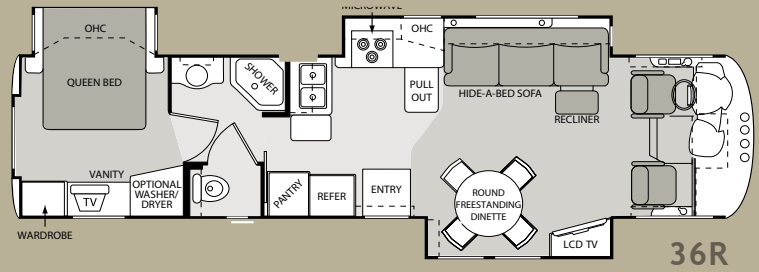
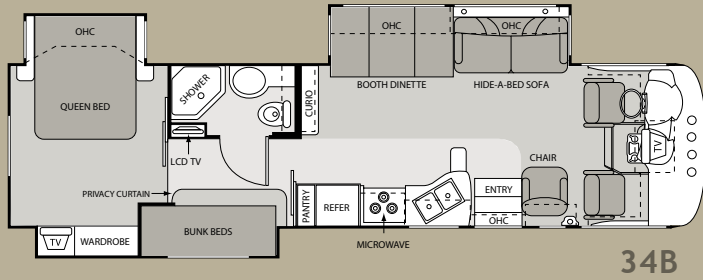
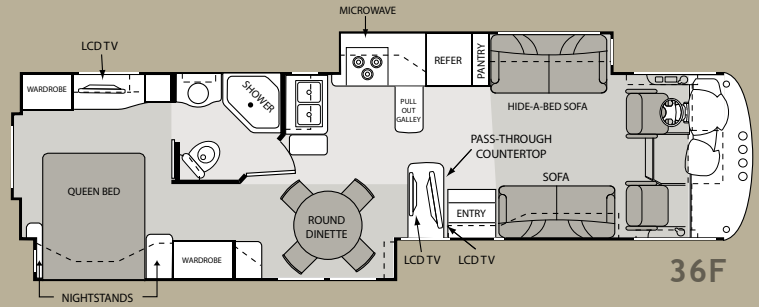
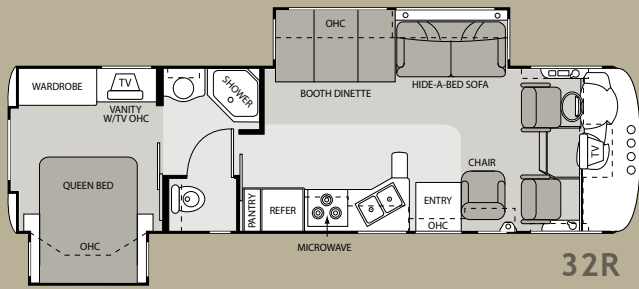
2008 WINDSPORT SEMI-BASEMENT MODEL FLOORPLANS



SPECIFICATIONS

MODEL	30Q	31D	31H	32E	33T	34Y
CHASSIS/WEIGHT RATING (LBS.)						
Ford Chassis 6.8L Triton	V-10	V-10	V-10	V-10	V-10	V-10
Gross Vehicle (GVWR)	16,000	18,000	18,000	18,000	18,000	20,500
Gross Combined (GCWR)	26,000	26,000	26,000	26,000	26,000	26,000
Workhorse Chassis 8.1L Vortec						
Gross Vehicle (GVWR)	V-8	V-8	V-8	V-8	V-8	V-8
Gross Combined (GCWR)	22,000	22,000	22,000	22,000	22,000	26,000
MEASUREMENTS						
Wheel Base	190"	190"	197"	212"	216"	228"
Exterior Length (without ladder)	31'11"	32'3"	32'10"	33'7"	34'3"	35'9"
Exterior Height (with air conditioner)	11'7"	11'7"	11'7"	11'7"	11'7"	11'7"
Interior Height	80"	80"	80"	80"	80"	80"
Awning Size	16'	16'	17'	18'	20'	20'
CAPACITIES						
Fuel (gallons)	75	75	75	75	75	75
LPG (pounds)	63.5	63.5	88	88	88	88
Fresh Water (gallons)	50	50	50	50	50	65
Waste Water (gallons)	32	32	32	32	32	37
Gray Water (gallons)	44	44	43	43	44	37
Water Heater (gallons)	6	6	6	6	6	6
Furnace (BTUs)	35,000	35,000	35,000	35,000	35,000	30,000
Exterior Storage Capacity (cubic feet)	125.2	124.7	38.7	44.5	136.2	31

2008 WINDSPORT BASEMENT MODEL FLOORPLANS



SPECIFICATIONS

MODEL	32R	34B	36E	36F	36R	36Z
CHASSIS/WEIGHT RATING (LBS.)						
Ford Chassis 6.8L Triton	V-10	V-10	V-10	V-10	V-10	V-10
Gross Vehicle (GVWR)	22,000	22,000	22,000	22,000	22,000	22,000
Gross Combined (GCWR)	26,000	26,000	26,000	26,000	26,000	26,000
MEASUREMENTS						
Wheel Base	208"	228"	235"	242"	235"	235"
Exterior Length (without ladder)	33'2"	35'10"	37'	37'	37'	37'
Exterior Height (with air conditioner)	12'11"	12'11"	12'11"	12'11"	12'11"	12'11"
Interior Height	84"	84"	84"	84"	84"	84"
Awning Size (manual/electric)	17'/17'	14'6"/14'	18'/17'	11' & 17'/ 10' & 17'	18'/18'	18'/17'
CAPACITIES						
Fuel (gallons)	75	75	75	75	75	75
LPG (pounds)	96.4	96.4	96.4	96.4	96.4	96.4
Fresh Water (gallons)	60	60	60	60	60	60
Waste Water (gallons)	55	48	48	48	55	48
Gray Water (gallons)	56	49	49	49	56	49
Water Heater (gallons)	10	10	10	10	10	10
Furnace (BTUs)	35,000	35,000	35,000	35,000	35,000	35,000
Exterior Storage Capacity (cubic feet)	89	107	111	117.3	111	107

	SB	BA		SB	BA		SB	BA
26" LCD television in bedroom (36F only)	N/A	S	LP fitting for exterior grill (34Y only)	S	N/A	Roof hatch access with built-in ladder	S	N/A
20" television in bedroom (not available on 36F)	N/A	S	Three-point seatbelts for driver and passenger, and seatbelts throughout	S	S	Egress windows with vents	S	N/A
14" television in bedroom (31H and 32E only)	○	N/A	Utility package includes two-way radios and valve stem extenders	○	○	Sealed bypass door	S	N/A
19" LCD television in bedroom (30Q, 31D and 33T only)	○	N/A	Washer/dryer prep (36R and 36Z only)	N/A	S	Black rubberized flooring	S	N/A
19" LCD television in hallway (34B only)	N/A	S	Washer/dryer combination (36R and 36Z only)	N/A	○	D-ring tie downs	S	N/A
Television cabinet in bedroom (31H and 32E only)	S	N/A	Central vacuum system (not available on 30Q, 31D, 31H and 32E; deletes countertop extension except on 36F and 36R)	○	○	Two 11-volt outlets	S	N/A
Home theater system with DVD player (standard on 36F and 36R)	○	○	Heated and enclosed utility station with full hook-ups	N/A	S	Television co-ax outlet	S	N/A
Outside entertainment center with 26" LCD television and stereo with speakers (not available on 36R)	N/A	○	Black tank No-Fuss flush system	N/A	S	99" wide fold-down ramp door	S	N/A
Outside entertainment center with remote stereo speakers and 32" LCD television; plus AM/FM stereo with compact disc player and speakers in cargo area (34Y only)	○	N/A	ELECTRICAL & PLUMBING SYSTEMS			13,500 BTU rear air conditioner (non-ducted)	○	N/A
Outside entertainment center with compact disc player (not available on 34Y)	○	○	Guardian RV Quietpac™ 40G gas generator (3600-KW) (not available on 34Y)	S	N/A	Rear exterior spotlights	○	N/A
Cable television and satellite prep	S	S	Guardian RV Quietpac™ 55G gas generator (5500-KW) (standard on 34Y)	○	S	Fantastic® fan	○	N/A
Satellite dish	○	○	Onan® RV Microquiet™ 4.0 gas generator (4000-KW) (not available on 34Y)	○	N/A	AM/FM stereo with compact disc player and speakers in garage (not available with sidewall mounted entertainment center and 32" LCD television)	○	N/A
BEDROOM & BATHROOM			Onan® Marquis Gold 5.5 gas generator (5500-KW)	○	○	19" LCD television	○	N/A
Queen-size bed and inner spring mattress with storage below (no storage on 30Q, 31D and 33T; not available on 34Y)	S	S	Onan® Marquis Gold 7.0 gas generator (7000-KW)	N/A	○	Electric drop-down bed	○	N/A
Bunk beds in hallway slide room (34B only)	N/A	S	Marine-type detachable power cord	S	S	Rear cargo screen	○	N/A
Twin beds with nightstand (not built with Mega Storage; 31D only)	○	N/A	Battery disconnect switch	S	S	Two wheel chocks	○	N/A
Bedsprad and pillow shams	S	S	Emergency start switch	S	S	Two jackknife cargo sofas (not available with electric bed option)	○	N/A
Attractive headboard with sconce wall lighting (not available on 34Y)	S	S	Second auxiliary battery	○	S	KEY		
Vanity with stool (not available on 34B and 36E)	N/A	S	30-amp service (not available on 34Y)	S	N/A	SB: Semi-Basement		
Classic French door and window in bedroom (36E and 36R only)	N/A	S	50-amp service (standard on 34Y)	○	S	BA: Basement		
Two leather Euro recliners (36E only)	N/A	S	6-gallon gas/electric water heater (standard on 34Y)	○	N/A			
Computer workstation with desk chair and one Euro recliner in place of two Euro recliners (36E only)	N/A	○	6-gallon gas water heater (not available on 34Y)	S	N/A			
China bowl toilet	S	S	10-gallon gas/electric water heater	N/A	S			
Neo-angled shower with glass door (not available on 30Q, 33T and 34Y)	S	S	Water heater bypass system	S	S			
Glass shower door (30Q, 33T and 34Y only)	S	N/A	Heated holding tanks	○	N/A			
SAFETY & CONVENIENCE			Heated and enclosed roto-cast holding tanks	N/A	S			
Entry door with deadbolt lock	S	S	STORAGE					
Telephone jack	S	S	Exterior rear Mega Storage compartment (30Q, 31D and 33T only)	S	N/A			
Systems Control Center	N/A	S	Seamless roto-cast storage compartments	S	S			
Smoke, LPG and carbon monoxide detectors	S	S	Flush mount radius baggage doors	S	N/A			
Fire extinguisher	S	S	Slab exterior aluminum luggage doors	N/A	S			
			In-floor slide system allows for full height storage compartments	S	S			
			34Y CARGO AREA					
			White laminated overhead cabinets with hidden hinges	S	N/A			

THE FOUR WINDS INTERNATIONAL QUALITY DIFFERENCE

What sets Four Winds International apart from other manufacturers? It's a better level of quality built in each motorhome from the inside out. It's exceptional value that is integrated into each design. It's a dedication to innovation that allows us to continually improve our motorhomes. Our ultimate goal is to build the right combination of safety, functionality and reliability so you get many years of enjoyment from your new motorhome. It's a commitment we take seriously, and one on which you can depend.

THE DIFFERENCE IS CLEAR

At Four Winds International (FWI), we strive to go beyond your expectations with every motorhome we build. By doing so, you will experience a better quality of life while on the road.

Our nationwide dealer network is fully equipped and trained to meet your service needs. The FWI support staff

has many years of experience, and is available to provide assistance on all technical, service and warranty issues. For complete warranty details, contact your Four Winds International dealer.

FWI is proud to offer high-quality products and support services that result in customer satisfaction—one customer

in your new motorhome. This is the Four Winds International difference.

WHY THOR IS YOUR BEST RV VALUE

Thor Industries, Inc., listed on the New York Stock Exchange (THO), proudly traces its history back over 70 years to the pioneering days of the recreational vehicle industry with the founding of Airstream, the industry's oldest and most renowned brand. Our total commitment to quality and our philosophy of putting our customers first has led to our continuous growth.

Today, Thor is the largest builder of recreational vehicles. Thor's strong financial condition and years of solid growth are your assurance that we will be here to serve you for years to come. We think this extra peace of mind is important when you are making a significant investment. Because our

customers are always #1 with us, we work harder than other manufacturers to satisfy you.



www.FOURWINDS-RV.com

at a time. So whether you are a first-time recreational vehicle owner, or an experienced one, we're confident that you'll enjoy many years of adventures

VEHICLE LOADING: Every effort has been made to provide the greatest number of options for the recreation vehicle owner. Along with these choices comes the responsibility to manage the loads that are imposed by the choices so that they remain within the manufacturer's specified chassis weight limits. Do not overload the recreation vehicle.

IMPORTANT: Towing capacity may vary by chassis model, floorplan, options and loading of the vehicle. This may result in a towing capacity which is less than the maximum capacity of the hitch. Do not exceed the vehicle's Gross Combined Weight Rating (GCWR), or the hitch rating. A separate functioning brake system is required for any towed vehicle or trailer

weighing more than 1,000 lbs. (450 KG) when fully loaded. Liquid capacities and weights are approximations only.

WARNING: This information is intended as a guide only. Weights of individual vehicles may vary. Consult your owner's manual and weight sticker affixed to each vehicle for complete loading, weighing, and towing instructions. Actual filled LP capacity is 80% of listing due to safety shut-off required on tank.

WARRANTY: This vehicle is provided with a one-year, 15,000-mile limited warranty and a three-year, 45,000-mile limited structural warranty. Chassis, component part and appliance manufacturers issue limited warranties covering those portions of the vehicle not covered by the limited warranties

issued by Four Winds International. To learn what portions of the vehicle are excluded from coverage under the limited warranties issued by Four Winds International, please contact your selling dealership or Four Winds International directly, or review the warranty packet inside the vehicle.

Product information, specifications, and photography in this brochure were as accurate as possible at time of printing. Photographs may contain some features that are optional on your vehicle. Since we continually strive to improve our products, actual products may differ. The manufacturer reserves the right, at any time, to make changes in product design, materials, component specifications and pricing, without notice. All capacities are approximate and dimensions are nominal. Some features or options may be different or unavailable in Canada.



FW
Four Winds
INTERNATIONAL

P.O. Box 1486 Elkhart, Indiana 46515-1486
Phone: 574-266-1111 Fax: 574-294-8971

© 2007 Four Winds International Litho USA 1107-25M