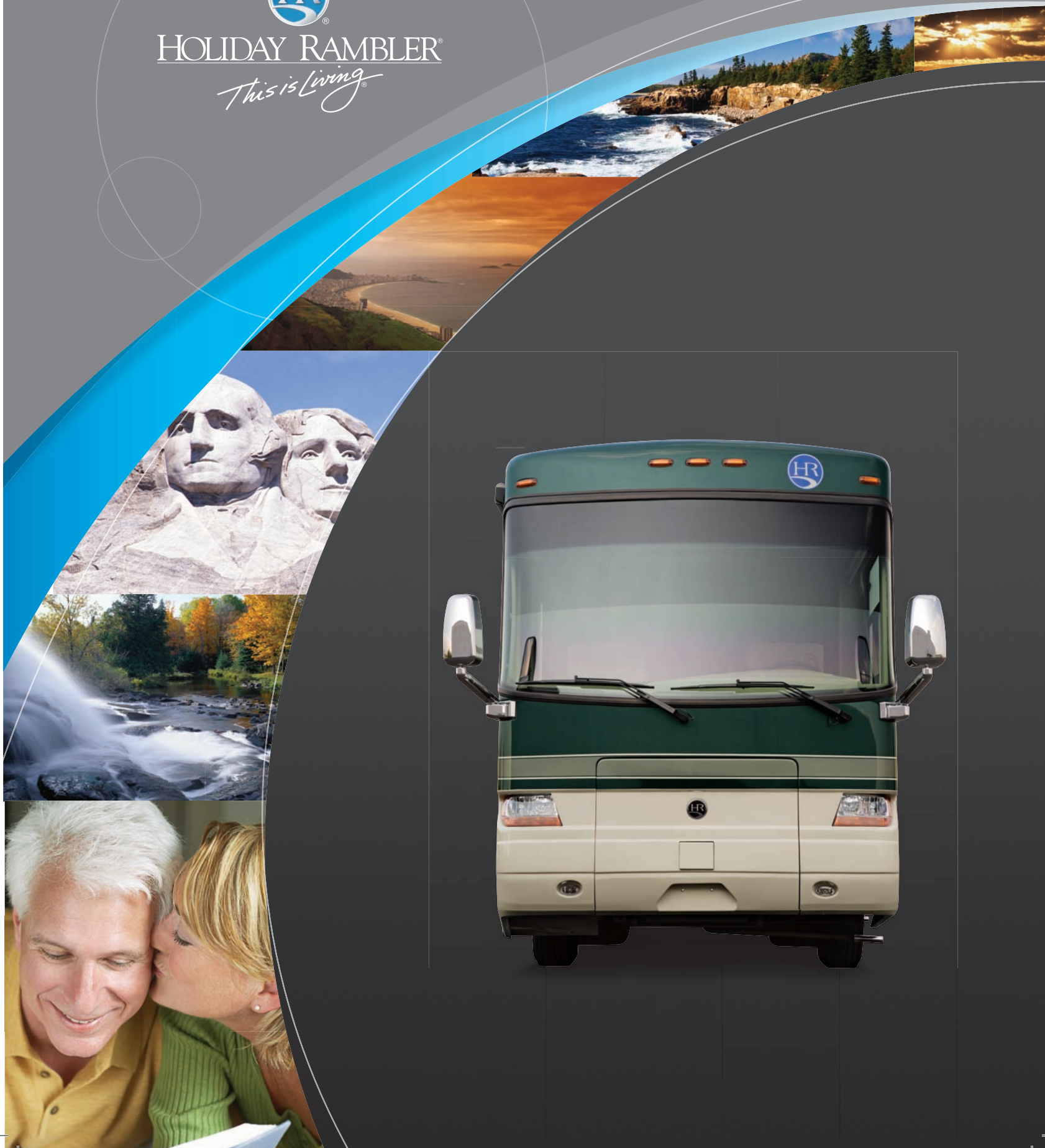


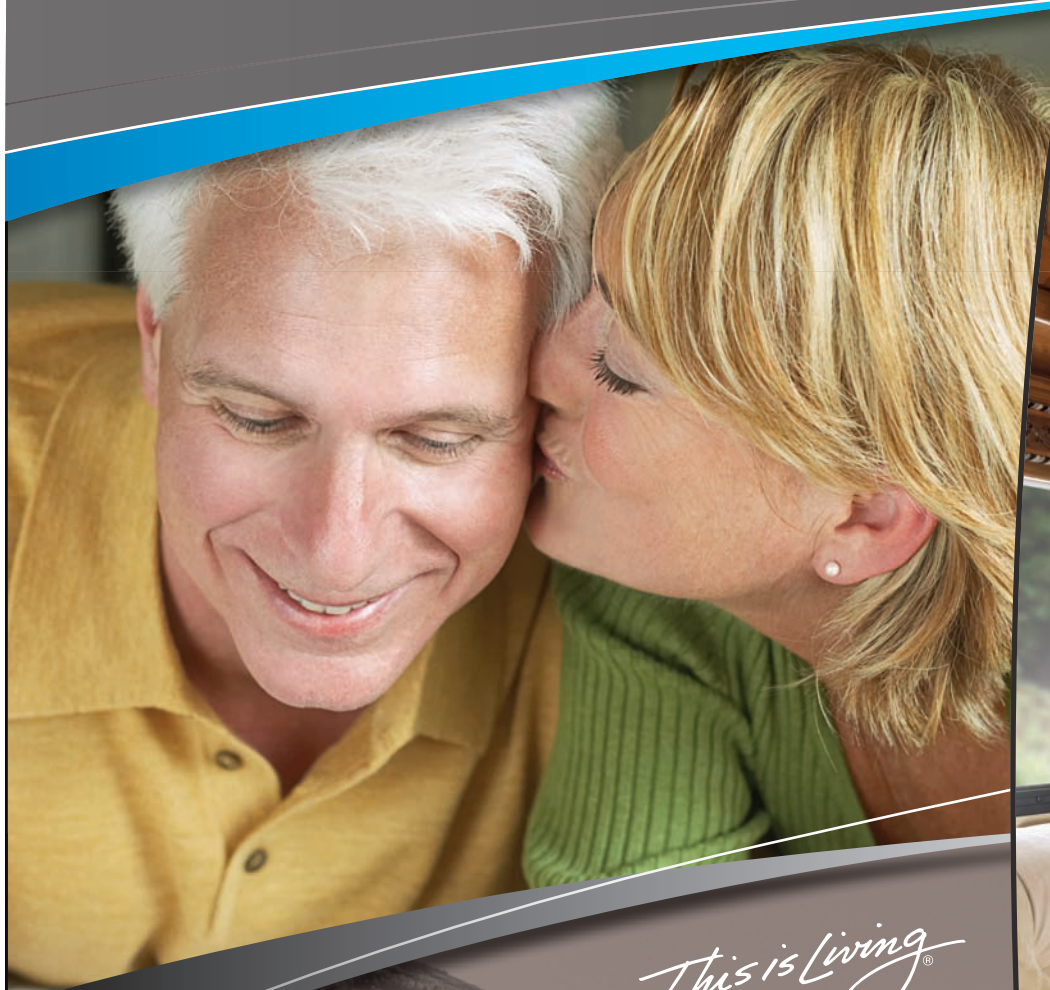
IMPERIAL™
2008



HOLIDAY RAMBLER®

This is Living®





This is Living®



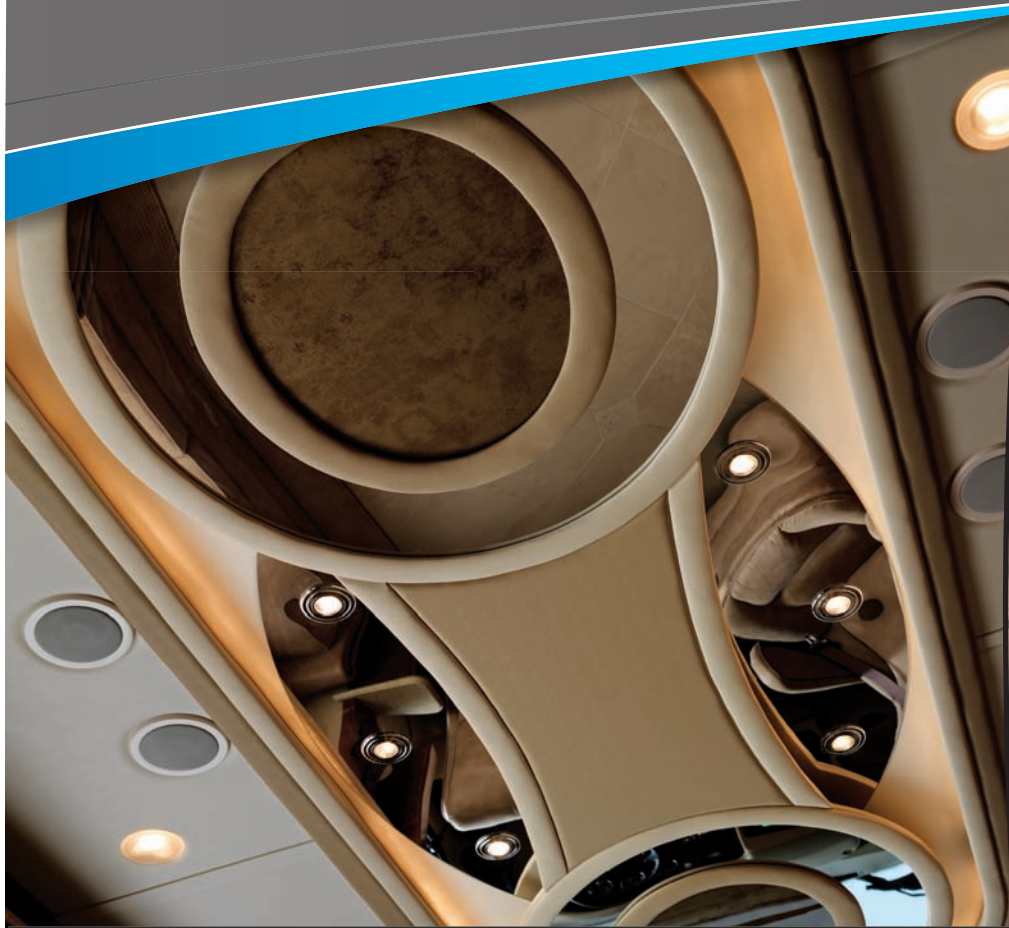


TRINIDAD IV | WINDERMERE | STAINED CHERRY

GET THE ROYAL TREATMENT WITH IMPERIAL.

The 2008 Imperial brings a new dimension to the high life. At once elegant and convenient, Imperial is designed with the latest features and innovations. In fact, the 2008 Imperial boasts three new floorplans. The Trinidad IV has an exciting new feature — a half bath located off the kitchen. It's convenient for guests and gives you greater privacy with a full bath behind the bedroom. Imperial also appeals to your visual side with beautiful interiors, featuring Ralph Lauren decor choices and glorious exteriors. The redesigned exterior

graphics are sure to get noticed with five colors with fades. The engine will draw plenty of attention, too. It's a new Cummins ISL 425 HP electronic engine, now complete with our engine emissions package. Of course, as a Holiday Rambler, the Imperial is made to last, with our exclusive heavy-duty steel Superstructure construction. So once you get used to the splendor and comfort of Imperial, you can relax knowing it will continue to serve you well for years down the road.



This is Living®



TRINIDAD IV | WINDERMERE | STAINED CHERRY

FASHIONED FOR THE FINEST FEASTS.

You won't have to scale back on gourmet cooking with Imperial — even the most meticulous chefs will find this kitchen to their liking. Roomy and well laid out, it glistens with high-gloss Corian® countertops. An ingenious roll-out countertop extension provides even more space. All the appliances are top-notch, including the convenient convection microwave. You can upgrade to a residential refrigerator with raised panel doors or add stainless steel panels to a 17-cubic-foot model. The dovetail drawers provide ample space

for your favorite tools, which will stay nice and neat with the built-in drawer organizer. To add a polished look, choose the plank flooring option for the galley and front entry. Because as any good cook knows, presentation is everything. To prove this theory, we give you a glorious setting for any meal with a legless dinette table with two freestanding chairs. We also recommend dining by candlelight, which plays artfully on the sculptured ceiling.



This is Living®



TRINIDAD IV | WINDERMERE | STAINED CHERRY

A BEDROOM FIT FOR A QUEEN...OR A KING.

Yes, this bedroom certainly looks stunning. But, the real star here is the luxurious queen-size bed with pillowtop mattress. If that's still not quite regal enough for you, choose the optional king-size version or either size with an air mattress with remote. The point is, Imperial has exactly what you need to truly be comfortable. That includes a 20" LCD television and DVD player in the bedroom, now standard. Ensuring your complete comfort also means a large, lavish bathroom featuring

a one-piece round shower in the Trinidad IV and Crete IV floorplans. Go ahead and take a nice, long shower. You'll have plenty of hot water with the 10-gallon water heater. Which also gives you plenty of hot water to use in the optional washer and dryer. You can choose between a washer/dryer combination or a stackable set, both tucked discreetly behind a beautiful cabinet door. Yet another luxury that makes life aboard the Imperial so noble.



This is Living®

◆◆ PANAVIEW™
1-PIECE WINDSHIELD



TRINIDAD IV | WINDERMERE | STAINED CHERRY

YOUR CHARIOT AWAITS.

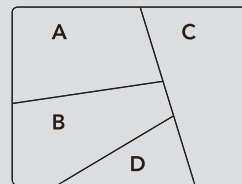
Whoever said “getting there is half the fun” must have been talking about the Imperial. It’s designed to be fun and easy to drive with an automotive-style dash and lighted VIP Smartwheel® with controls right at your fingertips. Safety is a priority with an anti-locking braking system, adjustable brake and accelerator pedals for a better fit and a color rear vision system with an adjustable camera — all standard. And new this year, we added the Onan® Power Management System so you can easily track vital engine functions

right on your dash monitor. The cockpit houses an AM/FM stereo with CD player with added auxiliary audio input for mp3 players. There’s both room and prep for optional CB radio, GPS navigation system and Sirius radio. New for 2008, the cockpit overhead boasts a 32” flatscreen LCD TV. Once you arrive at your destination, unloading is easy with the addition of slide-out trays. Choose from one side slide-outs or a pass-through slide-out.

REGAL DESIGNS.

This year, in addition to our own beautiful decor choices, we're proud to offer fabric selections from Ralph Lauren, one of America's premier designers. Recognized around the world, Ralph Lauren is the embodiment of sophisticated style. All of our interior choices are designed to coordinate beautifully with our exciting new exterior colors. Choose your favorite for an amazing look that reflects your own style.

- A. BEDSPREAD
- B. SOFA
- C. ACCENT
- D. CARPET



Add a bit of sparkle to your motorcoach with this unique decor package. • Upgraded fabrics throughout • High-gloss full-tile floor in living area, galley, and vanity area • Upgraded recessed ceiling design in living area • Laminate inserts in overhead cabinet doors ILO raised panel • Backlit glass backsplashes in galley and vanity • Backlit glass splashguard in galley • Chrome hardware and accents • Upgraded slide-out fascia trim and valance design with matching headboard design • Luxury Edition logos on cabseats and exterior of coach



STARRY NIGHT luxury edition decor package



CASHMERE SANDS



NATURAL OAK



STAINED OAK



NATURAL CHERRY



STAINED CHERRY



NATURAL MAPLE



DECADENT MIDNIGHT



LANDSDOWN II by Ralph Lauren



BLACK PEARL by Ralph Lauren



WINDERMERE by Ralph Lauren

**BETTER
STAIN
PROTECTION**

Manufactured in, not added on. For added protection against stains, soil repellent is applied to virtually all upholstery fabric during the finishing process for superior coverage.*



*Brand and application of upholstery fabric protection may vary depending on date recreational vehicle was manufactured.

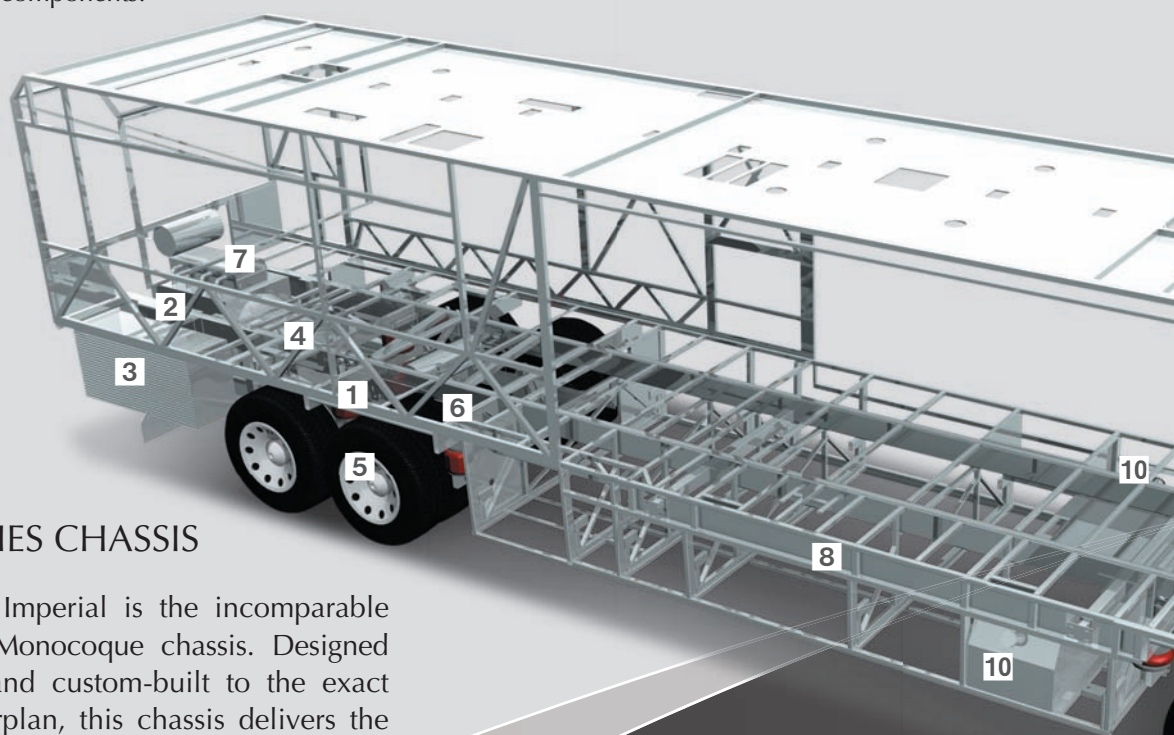
1 For less vibration and smoother shifting, a unique rear axle tilt and three-point engine mounting system perfectly aligns the entire drivetrain.

2 A 10,000 lb. hitch with 7/4-way trailer plug offers powerful towing capacity.

3 The side-mounted aluminum radiator and intercooler reduce weight, are rust-resistant and deliver better heat transfer than steel cooling components.

The cooling system exceeds all manufacturer requirements, while two fuel filters help ensure that the injectors remain clear and operate at peak performance.

4 Semi-Monocoque Design – Trussed superstructure distributes stress evenly throughout the entire chassis and adds strength to the sidewalls and bays. Rails are spaced 44" on center for a wider stance and unmatched strength.



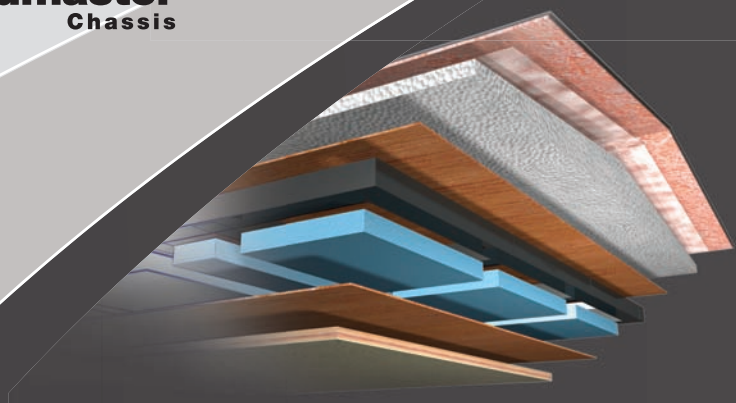
ROADMASTER S-SERIES CHASSIS

At the heart of the 2008 Imperial is the incomparable Roadmaster S-Series Semi-Monocoque chassis. Designed for luxury motorcoaches and custom-built to the exact specifications of each floorplan, this chassis delivers the most sophisticated features and very best performance in the industry. We invite you to take a few minutes and discover all the ways it leads the pack in safety, reliability, comfort and convenience.



8-LAYER ROOF CONSTRUCTION (top to bottom)

- One-piece 1/4" thick fiberglass roof, crowned for water runoff and seamlessly joined with front and rear end caps; non-skid walkways on outboard areas for added convenience
- Vapor barrier
- 3-1/2" tapered bead foam supports the crowned roof; the center tunnel houses wiring and air conditioner ducts
- 1/4" marine grade plywood sheeting
- Tubular steel framework
- R 7.5 closed cel foam seals every nook and crevice
- Luaun and vinyl paneling are Vac-U-Bonded
- Sound-absorbing, easy-to-clean padded vinyl interior headliner



5 A two-stage Jacobs engine brake, auto-slack adjusters, and the anti-lock braking system (ABS) with front disc and rear drum brakes all combine to give you superior stopping power — especially on steep grades. Automatic traction control (ATC) eliminates wheel slippage in slick conditions and heightens control.

6 The Cushion Air Glide suspension positions 10 Bilstein® shocks and 10 air bags, 8 of which are outboard mounted with auto leveling for greater stability, a smoother ride and the best handling in its class. The air bags are placed approximately 7-1/2 feet apart, providing a wider and more stable platform. The active suspension automatically adjusts the pressure of the air bags as you drive and virtually

eliminates nosediving and the side-to-side body sway associated with high wind conditions, curvy roads and emergency maneuvers.

7 You'll enjoy the peerless performance of the Cummins® ISL 425 HP diesel engine and Allison® 3000 MH 6-speed World Transmission with electronic shifter. Our exclusive use of synthetic transmission fluid allows for up to three-year maintenance intervals for the Allison® transmission.



8 The heavy-duty steel superstructure is the strongest you'll find anywhere, with a 3" x 8" x 1/4" frame rail and a steel rating of 60,000 PSI.

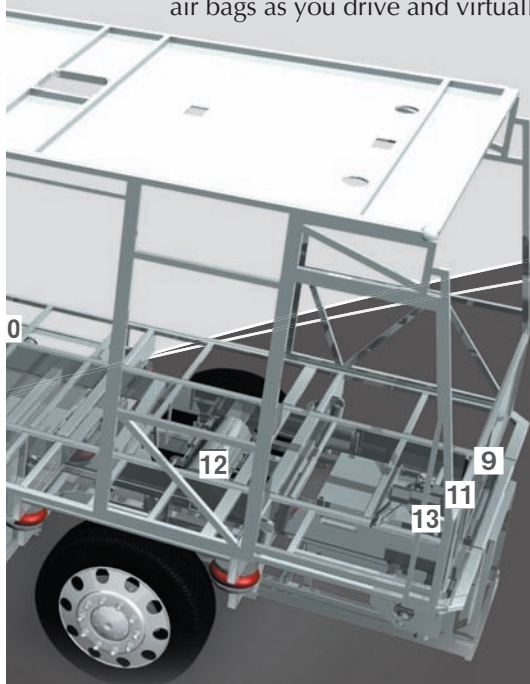
9 Steel Cage Firewall for extra protection.

10 Dual fuel fill allows you to fill the tank from either side of the coach, for greater convenience and flexibility at the pump.

11 The brake and accelerator pedals adjust at the touch of a button, for enhanced ergonomics and greater comfort.

12 Dual Ping Tanks with 3/4" air lines for quicker response and improved ride and handling.

13 The power steering box provides a 50-degree front wheel turn angle in both directions and returns the steering wheel back to its center position.



EATON
VORAD)))

This optional collision avoidance system utilizes a combination of sensors, software and radar to warn you of potential hazards in the road ahead.

Aladdin™
The All-In-One
VIDEO COACH SYSTEMS MONITOR

Aladdin™ makes it easy to keep track of many important functions, including tank levels, temperatures, mileage and much more.

GPS
Global Positioning System

With the GPS option, you're free to explore the middle of nowhere and always know exactly where you are.

6-LAYER SIDEWALL CONSTRUCTION

(left to right)

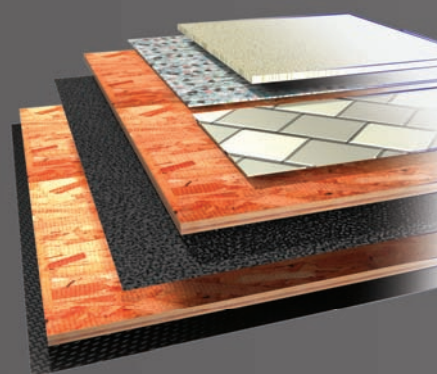
- Gel coat fiberglass outer wall
- Luaun paneling
- R 7.5 closed cel foam seals every nook and crevice
- Heavy-gauge tubular steel and 4" steel plate backers
- Luaun paneling; walls are Vac-U-Bonded together
- Decorative wall coverings



5-LAYER FLOOR CONSTRUCTION

(top to bottom)

- Tile, or 1/2" carpet pad and carpeting
- Dyna-Span Flooring
- Decibel paper
- Dyna-Span Flooring
- Waterproof Darco underbelly



BODY CONSTRUCTION: FEATURES

- Heavy-Duty Steel Superstructure with Steel Cage Cockpit Construction
- Seamless One-Piece Molded Crowned Fiberglass Roof
- All-Season Foam Insulated Roof
- Laminated Gel Coat Fiberglass Sidewalls
- Five-Layer Flooring with Two Layers of OSB
- Deluxe Full-Body Paint
- PanaView™ 1-Piece Front Windshield
- Dual Head Power Controlled Heated Chrome Exterior Mirrors with Turn Indicator Lights
- Halogen Fog Lights
- Daytime Running Lights
- Recessed Side Docking Lights
- Roof-Mounted Dual Trumpet Air Horns
- Entry Step Storage
- Insulated Aluminum Baggage Doors with Power Locks
- Lined Pass-Through Storage Compartments (Felt)
- Interlocking Aluminum Framed Slide-Out Houses
- Side-Hinged Baggage Doors with Electric Locks
- Rear Ladder
- Full-Length Holiday Rambler Mud Flap
- Electric Bay Door Latches

OPTIONS

- 3M Film Front Mask
- Storage Bay Slide-Out Tray - One Side
- Storage Bay Slide-Out Tray - Pass-Through

CHASSIS/ENGINE/SUSPENSION: FEATURES

- Roadmaster S-Series Semi-Monocoque Chassis
- Cummins® ISL 425 HP (8.8L) Electronic Engine with Allison® 3000 MH 6-Speed World Transmission and Electronic Shifter
- Torque (@ 1,300 RPM) 1,200 lbs./ft., Max. Net
- Engine Displacement 538"/8.8L
- Dual Fuel Fill
- 200 Amp Alternator
- Rear Axle Ratio: 4.78:1
- Tires: 295/80R/22.5
- Remote Transmission Fill
- Polished Aluminum Wheels
- Full Cushion Air Glide Suspension with Ten Bilstein® Shocks and 10 Air Bags, 8 of Which Are Outboard Mounted
- Automatic Traction Control
- Anti-Locking Braking System with Front Disc Brakes and Rear Drum Brakes
- Tag Axle with Anti-Lock Braking System
- Two-Stage Jacobs Engine Brake
- Prewire for Supplemental Braking System
- Engine Block Heater with Switch on Dash
- Automatic Air Leveling System
- 10,000 Lb. Hitch Receiver and 7/4-Way Trailer Plug
- Remote Inflation Connector
- Hydraulic Leveling System (Replaces Standard Air Leveling System)
- Dual Leveling Systems (Air/Hydraulic)

OPTIONS

COCKPIT: FEATURES

- AM/FM Stereo with Single CD Player
- Auxiliary Audio Input
- Color Rear Vision System with Adjustable Camera
- Coach Systems Monitoring
- CB Radio Prep (Cable and Antenna)
- Manual Privacy Curtain
- Power Front Sunvisors
- Pilot and Co-Pilot Side Window Manual Pull-Down Sunscreens
- Adjustable Brake and Accelerator Pedals
- Lighted VIP Smartwheel® with Controls for Windshield Wipers, ICC, and Cruise Control
- Six-Way Power Ultraleather™ Pilot and Co-Pilot Seats with Power Adjustable Lumbar and Co-Pilot Footrest
- Fiberglass Automotive Dash with Canyon Burlwood Instrumentation Panel
- Audible Turn Signals
- 110V, 12V and Phone Outlet
- Carpeted Driver and Passenger Floor Mats
- Interior Cockpit Sunscreens
- Electric Privacy Drape
- Electric Cockpit Solar Screens with Blackout Shades (Replaces Sunvisors and Window Blinds)
- CB Radio
- In-Dash AM/FM Stereo with Multi-Disc CD Player
- GPS Navigation System
- Sirius Satellite Radio System (Requires Subscription)
- 3-Camera Rear Vision System with Audio and Adjustable Center Camera

OPTIONS

APPLIANCES AND ACCESSORIES: FEATURES

- Four-Door Refrigerator with Ice Maker and Raised Panel Doors
- Recessed High-Output 2-Burner Cooktop with Flush-Mounted Covers
- Spacesaver Convection Microwave with Touch Control
- TV Antenna with Booster
- Prep for Satellite Receiver
- 32" Flatscreen LCD TV with Remote in Living Area (N/A: Bali IV)
- 40" LCD TV with Remote in Living Area (Bali IV)
- 20" LCD TV with Remote in Bedroom
- Home Theater System with DVD Player
- Bedroom DVD Player
- Universal Remote System for Living Area TV

OPTIONS

- Combination Washer/Dryer
- Stackable Washer/Dryer
- 17 Cu. Ft. Four-Door Refrigerator with Raised Panel Doors
- Residential Refrigerator with Raised Panel Doors

- Stainless Steel Refrigerator Panels
- Central Vacuum System
- 26" LCD TV with Remote in Bedroom
- Electric TV Antenna
- KVH R5 In-Motion Digital Satellite System
- KVH R6 In-Motion Digital Satellite System
- Exterior 32" LCD TV

INTERIOR: FEATURES

- Stained or Natural Oak Cabinetry
- Dinette Wall Cabinet with Corian® Top
- Built-In Storage Area for Galley Countertop Covers
- Heavy-Duty Ball Bearing Drawer Guides (Fastec)
- Corian® Countertops Throughout
- Roll-Out Polished Solid Surface Galley Countertop Extension (N/A: Trinidad IV)
- Corian® and Tile Backsplash in Galley
- Tip-Out Tray under Galley Sink
- Day/Night Shades with Blackouts Throughout
- Mini Blinds in Galley and Bathroom
- Drawer Organizer in Galley
- Designer Carpeting in Living Area and Bedroom
- Ceramic Tile Flooring in Cockpit Area
- Nightstands with Corian® Countertops
- Two-Tone Cabinetry Hardware and Bath Accessories

OPTIONS

- Interior Decors: Cashmere Sands, Decadent Midnight
- Ralph Lauren Decors: Landsdown II, Black Pearl, Windermere
- Starry Night Luxury Edition Decor Package: Upgraded Fabrics Throughout; High-Gloss Full-Tile Floor in Living Area, Galley, and Vanity Area; Upgraded Recessed Ceiling Design in Living Area; Laminate Inserts in Overhead Cabinet Doors ILO Raised Panel; Backlit Glass Backsplashes in Galley and Vanity; Backlit Glass Splashguard in Galley; Chrome Hardware and Accents; Upgraded Slide-Out Fascia Trim and Valance Design with Matching Headboard Design; Luxury Edition Logos on Cabseats and Exterior of Coach
- Cabinetry Options: Stained or Natural Cherry, or Natural Maple
- Full-Tile Living Room Floor

- Laminated Plank Flooring in Galley and Bath, in front of Washer/Dryer Cabinet, and Front Entry
- Recessed Ceiling in Living Area and Galley
- Ceiling Fan in Bedroom
- Solar Screens with Blackout Shades Throughout (Power in Living Area)

FURNITURE: FEATURES

- Legless Corian® Dinette Table with Two Dinette Chairs and Two Folding Chairs
- Roadside: Ultraleather™ Sofa with Drawer
- Curbside: Ultraleather™ J-Lounge with Drawer
- Queen Bed Pillowtop Mattress

OPTIONS (Living Area Furniture Location is Floorplan Dependent)

- King Bed
- Queen Air Mattress with Digital Remote
- King Air Mattress with Digital Remote
- Ultraleather™ Hide-A-Bed Sofa with Air Mattress
- Ultraleather™ Hide-A-Bed Sofa
- Fabric Hide-A-Bed Sofa with Air Mattress
- Fabric/Ultraleather™ Hide-A-Bed Sofa with Air Mattress
- Fabric Rest Assured Sofa with Drawer
- Ultraleather™ Rest Assured Sofa with Drawer
- Computer Table with Leather Euro-Recliner and Ottoman
- Fabric/Ultraleather™ Sectional Booth Dinette Ensemble
- Two Folding Chairs with Sectional Booth Dinette Ensemble

ELECTRICAL SYSTEMS AND LIGHTS: FEATURES

- 50 Amp 120V Distribution Panel and Power Cord with Quick Disconnect
- 50 Amp Power Cord Reel
- Onan® Power Management System
- 2,000-Watt Pure Sine Wave Inverter with Auto Gen Start and Auto Temp Start
- Pilot and Co-Pilot Map Lights
- Lighted Utility Center
- Underhood Utility Light
- 120V Outlet in Private Bath
- 120V Receptacles in Outside Storage Compartment
- Lighted Exterior Storage Compartments
- Four 6V Deep Cycle House Batteries
- Two 12V Heavy-Duty Chassis Batteries
- Multiplex 12V Wiring for Dash/Instrument Panel Gauges and Interior of Coach

OPTIONS

- Solar Panel

PLUMBING AND LP SYSTEMS: FEATURES

- Central Water Filtration System in Service Bay
- Manabloc Water System for Entire Coach
- 10-Gallon LP Gas/Electric Water Heater with Electronic Ignition (N/A: Bali IV and Trinidad IV)
- Insulated Systems Compartment with Easy Access to Hook-Up
- Demand Water System and Water Pump
- Water Pump Switch in Galley, Bathroom, and Service Bay
- China Toilet
- Super Service Center
- Black Holding Tank Rinsing System
- Outside Faucet with Hot and Cold Water
- Single Lever Galley Faucet with Pullout Sprayer

OPTIONS

- Power Water Hose Reel
- RV Sani-Con Tank Drainage System
- Insta-Hot® Water System
- Bathtub

HEATING, VENTS AND AIR CONDITIONING: FEATURES

- Two Low-Profile Ducted 15M BTU Roof Air Conditioners and One 13.5M BTU Roof Air Conditioner with Wall Thermostats and Heat Pumps (Dometic)
- Aqua-Hot® Water and Heating System (Bali IV and Trinidad IV)
- Two 25M BTU Electronic Ignition Furnaces (N/A: Bali IV and Trinidad IV)
- Electronic AC/Heat Climate Control System
- Center Defroster Vents
- 12V Attic Fan in Bathroom and in Private Lavatory
- 12V Attic Fan with Wall Thermostat in Galley

OPTIONS

- Aqua-Hot® Water and Heating System (Standard on Bali IV and Trinidad IV)

WINDOWS, DOORS AND AWNINGS: FEATURES

- Flush-Mounted Radius Dual Pane Safety Glass Dark Tinted Windows
- Front Entry Door with Air Seal, Removable Top Screen, and Automatic Front Door Awning
- Keyless Remote Entry System with Pocket Remote
- Topper Awnings on Slide-Out Houses
- Window Awnings on All Slide-Out House Windows, Except Galley Windows and Slide-Out Windows under Patio Awning
- Eclipse Automatic Patio Awning

OPTIONS

- Mirage Automatic Patio Awning

SAFETY: FEATURES

- Back-Up Alarm
- Fire Extinguisher
- Deadbolt Lock on Entrance Door
- Lighted Interior and Exterior Grab Handles
- 120V GFI Protected Circuit (Galley, Bath and Storage Bay)
- LP Gas Detector
- Smoke Detector
- Carbon Monoxide Detector
- Integrated Pilot and Co-Pilot Three-Point Seatbelts
- Third Brake Safety Light
- Egress Windows
- Security Safe

OPTIONS

- Deluxe Security Alarm System
- Collision Avoidance System

Due to continuous product improvement, please see the website for the latest in standards and options, specifications, and technical data. Go to www.holidayrambler.com.

Weights*	Crete IV	Bali IV	Fiji IV	Trinidad IV
Gross Vehicle Weight Rating	44,600	45,160	44,600	44,600
Gross Combined Weight Rating	54,600	55,160	54,600	54,600
Front Gross Axle Weight Rating	14,600	15,160	14,600	14,600
Rear Gross Axle Weight Rating	20,000	20,000	20,000	20,000
Tag Gross Axle Weight Rating	10,000	10,000	10,000	10,000
Measurements				
Wheelbase	273.5"	290"	290"	273.5"
Overall Length	42' 10"	TBD	TBD	42' 10"
Overall Height with A/C	12' 6"	12' 6"	12' 6"	12' 6"
Interior Height	84"	84"	84"	84"
Interior Width	96"	96"	96"	96"
Exterior Width	100.5"	100.5"	100.5"	100.5"
Tank Capacities**				
Water Heater	10	N/A	10	N/A
Gray Tank	70	70	70	70
Black Tank	40	40	40	40
Fresh Tank	100	100	100	100
LP Tank***	25	25	25	25
Fuel Tank	130	130	130	130

* Towing capacity is limited by GCWR; your vehicle's towing capacity is the difference between the GCWR and the actual vehicle weight, including all water, fuel, passengers and cargo. Your towed vehicle should be equipped with auxiliary brakes if the weight of the towed vehicle exceeds 1,000 lbs. Consult your owner's manual for further towing information.

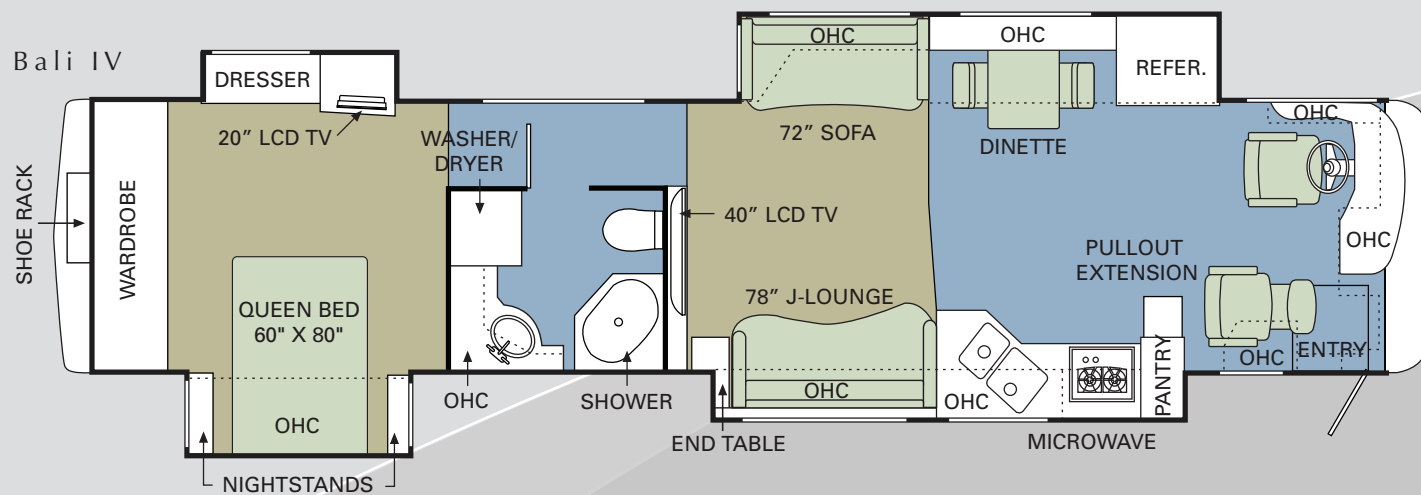
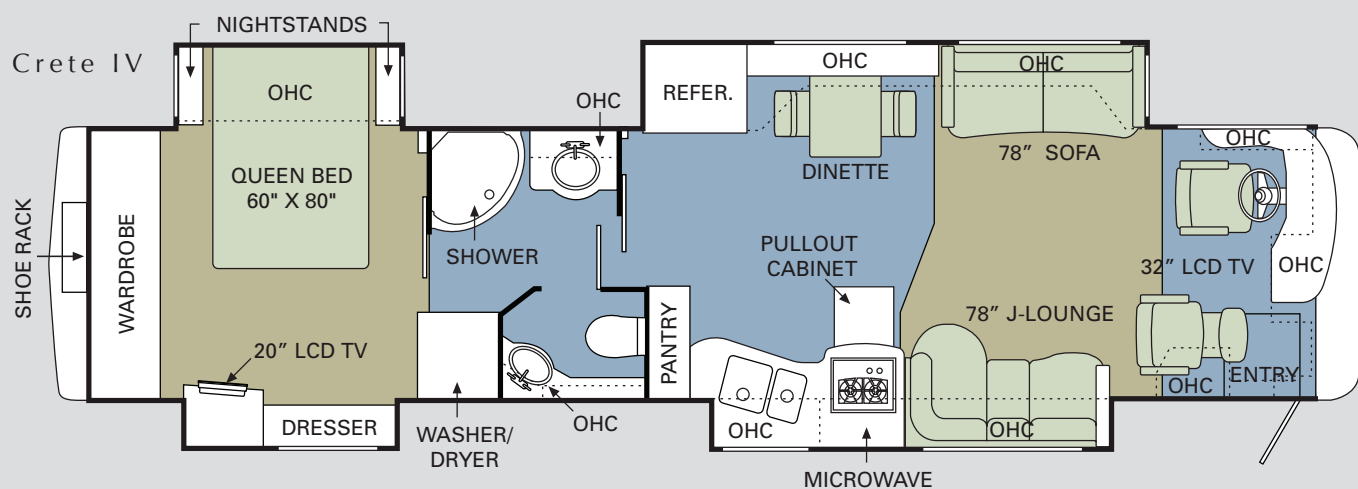
** All tank capacities are estimated based upon calculations provided by the tank manufacturers and represent approximate capacities. The actual "usable capacity" may be greater or less than the estimated capacities based upon fabrication and installation of the tanks.

*** Actual filled LP capacity is 80% of listing due to safety shut-off required on tank.

The actual overall length of the recreational vehicle may differ from that indicated in the brochure due to variances in the manufacturing process and/or installed components. The actual length may be greater or less than that indicated. Due to the large variety of options and floorplan arrangements available to our customers, actual weights for each unit can differ significantly. Holiday Rambler provides a weight sticker on each unit we produce which includes that unit's tank capacities and approximate weight. Consult your local Holiday Rambler dealer for unit availability and further information. The information printed in this brochure reflects product design, fabrication, and component parts at the date of printing. The manufacturer reserves the right, at any time, to make changes in product design or material or component specifications as its sole option, without notice. This includes the substitution of components of a different brand or trade name which will result in comparable performance. All information printed in this brochure is subject to change after the date of printing. Some features shown or mentioned in this brochure are optional and may only be available in selected floorplans. Photographs may show props or decorations that are not standard equipment on Holiday Rambler models. Holiday Rambler, the Holiday Rambler logo and its design, are registered trademarks. All other products and company names are trademarks and/or registered trademarks of their respective holders. While the color of the motorhome's exterior and the interior fabrics depicted in this sales brochure are fair and reasonable depictions, the colors depicted may not be an exact match of the actual colors because of the variances in photo-processing and variances caused by inserting the photographs within the sales brochure. Due to product improvements, changes during the model year and/or transcription errors that may occur, information represented within this brochure may not be accurate at the time of your purchase. If certain information is significant to your purchasing decision, please confirm the information with your dealer prior to submitting your order. Component part and appliance manufacturers issue limited warranties covering those portions of the recreational vehicle not covered by the Limited Warranties issued by Monaco Coach Corporation. To learn which specific component parts and appliances are excluded from the Limited Warranties issued by Monaco Coach Corporation, please contact your selling dealership or Monaco Coach Corporation directly, or review the warranty packet inside the recreational vehicle.

2008 FLOORPLANS

CARPET | TILE

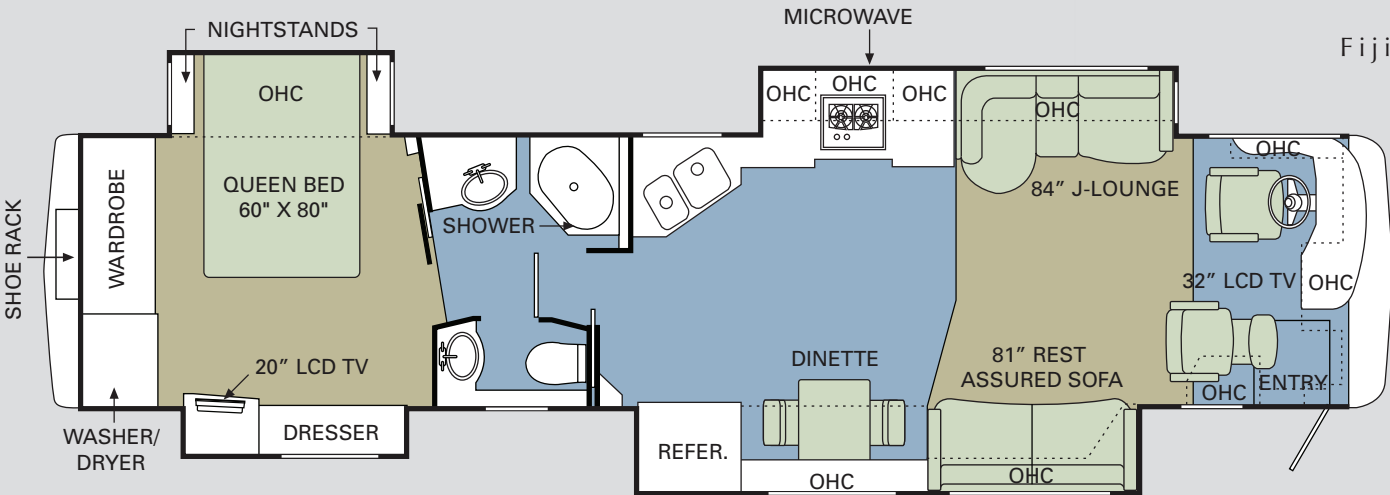


HOLIDAYRAMBLER.COM

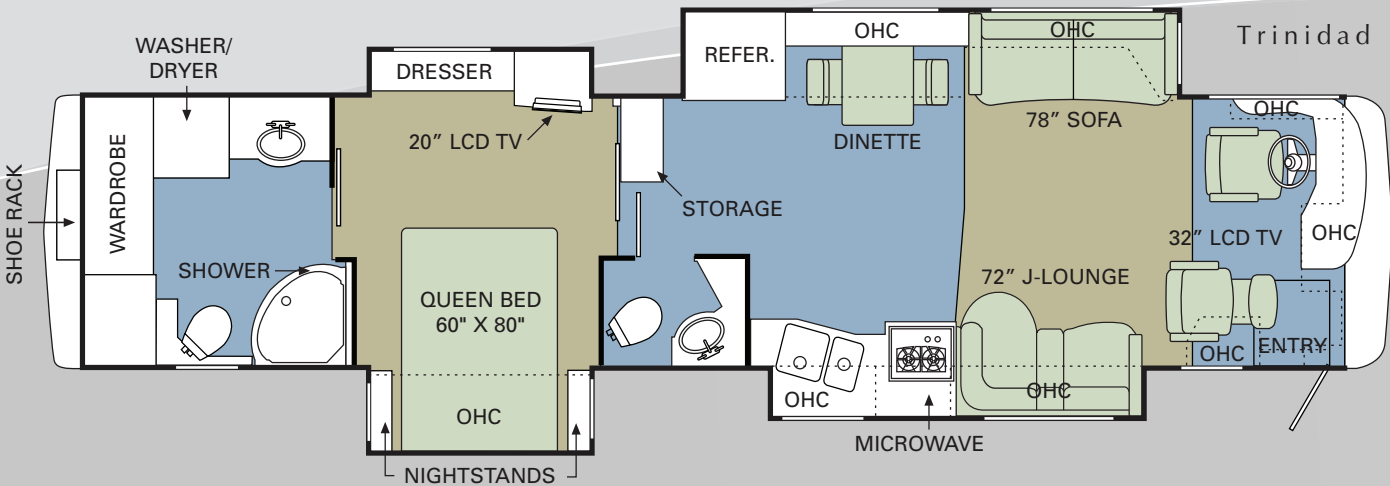
Log on to our website anytime, night or day. It's your link to everything Holiday Rambler, including product news and updates, club events, dealer and service center info and much more. Take it for a test drive today.



Fiji IV



Trinidad IV



ASSISTANCE

SALES • TECH • ROADSIDE

WE'RE HERE. ANYTIME, EVERY TIME.

- Reach us anytime — literally — via our live customer support line.
- Drive in to one of our 350 Service Centers.
- Enjoy the first year free when you enroll in our Owner Advantage Roadside Assistance Program.
- See where it all begins with a tour of one of our facilities in Indiana or Oregon. Call 1-800-650-7337 or 1-800-634-0855 to find out more.



IMPERIAL™
2008

BEING DIFFERENT MAKES ALL THE DIFFERENCE.

At Monaco Coach Corporation, we always strive to be the best. And that means thinking outside the box. Giving you more of what you want in an RV. Like our exclusive Roadmaster chassis. PanaSuite™ full-wall slides. And programs like Monaco Financial Services and 24/7 roadside assistance. No other manufacturer can match Monaco's offerings. No one even comes close. Why not discover the difference for yourself? Visit www.monacodifferent.com.

**"No other manufacturer can match Monaco's offerings.
No one even comes close."**



WARRANTIES

12 MONTH/24,000 MILE basic limited warranty

5 YEAR/50,000 MILE limited warranty on aluminum or steel frame structure of sidewall, roof, front and rear cap

3 YEAR/50,000 MILE limited warranty on Roadmaster chassis

Applies to certain models. See owner's manual for complete details.



HOLIDAY RAMBLER®

This is Living®



MONACO COACH CORPORATION

606 Nelson's Parkway Wakarusa, IN 46573
www.holidayrambler.com | 800-245-4778



Monaco is traded on the New York Stock Exchange under the listing MNC.
© 2007, Monaco Coach Corporation 08/07 NPN:BROHIMP Litho in USA.