

08 MERIDIAN





SMARTSPACE™
WEB

TRAVEL IN STYLE.

The redesigned 2008 Itasca Meridian® makes its mark on the diesel pusher landscape with an all-new look. It's built on the proven Freightliner® XC Chassis that boasts a 29,410-lb. GVWR and a 350-hp Cummins® diesel engine that will get you wherever you need to go with ease. It is also designed for maximum cargo capacity with large compartments and user-friendly side-

hinged doors. New interior styling and SmartSpace™ features that make the most of the available space will have you enjoying more time on the road. You've earned the right to travel in style in the new Itasca Meridian.

IT'S ALL INSIDE

When you sink into one of the two-tone sofas in available UltraLeather™ and look around at the contemporary Honey Cherry cabinetry and exciting décor, you'll realize you've found a coach you can call home. Day/night pleated shades offer the privacy and sunlight you desire while dual-glazed, thermo-insulated windows improve the Meridian's thermal efficiency.

When you want to kick back and watch a movie, the 37" LCD TV puts you right in the heart of the action. The Home Theater Sound System enhances the experience with surround sound and a CD/DVD player. An amplified antenna and a video selection system are also included to give you more options. Enjoy movies without shoreline or generator power by using the 2,000-watt inverter/charger.



LIVING ROOM Relax in the plush comfort of the spacious living area in your Meridian. Beautiful curved cabinetry looks great and maximizes storage. Add the available King-Dome® in-motion satellite system with dual LNBS and receive satellite channels on two separate receivers.*

* Receivers not included. Not available in Canada.

WEB Select a Key Feature

The **WEB** icon designates a Winnebago Industries Key Feature. For further in-depth information and photos, use the Drop-down Menu or click on the 'Key Features' page at winnebagoind.com.



EURO CHAIRS Two available Euro Chairs in matching UltraLeather can be moved to your favorite spot when parked and let you relax in style.



WEB Rest Easy® This multi-position lounge changes from a sofa to a recliner with ottoman to a comfortable bed, all at the touch of a button.



RECYCLING CENTER Three separate bins let you sort trash and recyclables in the 39Z (two bins in the 37H).



GALLEY The refrigerator features Titanium Touch™ stainless finish doors that have the look of stainless steel, resist fingerprints and are warmer to the touch than traditional stainless steel. The doors also have a steel core so you can use your favorite kitchen magnets. Cabinet drawers are sized to maximize storage, hold tight with positive latches and open fully for easy access to stored items.

MADE FOR MEALS

SmartSpace design elements make this a user-friendly galley, with innovative features like full-extension drawer slides and a pantry with rollout compartments and adjustable trays.

Corian® solid-surface countertops with matching sink and range covers give the galley an upscale look and feel. A 30" microwave/convection oven with sensor cook and a built-in range fan gives you a wide variety of cooking options. Cleanups are quick and easy with a faucet that doubles as a pull-out sprayer.

Your choice of the BenchMark® full-comfort dinette or the new dining table/buffet provides comfortable dining space for four.



WEB BenchMark™ The BenchMark full-comfort dinette incorporates innerspring cushions and flip-up storage compartments. At night, it quickly converts into a comfortable bed.



TABLE/BUFFET Serve dinner for up to four people when you choose this expandable dining table that connects to a buffet for extra storage.

SLEEP WELL

The Meridian provides the comfort and privacy of a spacious master bedroom, complete with a large slideout and a king-size bed in the 39Z. The 37H comes with a queen-size bed with underbed storage. Both models offer a large mirrored wardrobe with plenty of storage.

A 26" LCD TV helps you relax before bed. It is connected to an available rear stereo system that includes a CD/DVD player, radio, alarm clock and an input for your MP3 player.

Bedroom windows are positioned for cross-coach ventilation so you can enjoy a cool breeze on a pleasant summer night.



39Z Paisley Court with Honey Cherry



sleep  number
by SELECT COMFORT



WEB **SLEEP NUMBER BED**
Digital remotes let you adjust each side of the available Sleep Number bed independently to your ideal level of comfort and support. Your Sleep Number – the Key to a Better Night's Sleep.™



WASHER/DRYER
Select the available washer/dryer and enjoy the convenience of never needing to stop at a laundromat.



SHOWER
Conserve water with the adjustable-flow showerhead with built-in water saver. A fold-down shower seat is also available.

TAKE COMMAND

The new ergonomic dash of the Meridian puts you in command. Controls are at your fingertips, including the power sunvisors, rearview monitor system with one-way audio and the auxiliary lamps which come in handy when parking or maneuvering after dark. The available side-view cameras activate with the turn signal to give you a view of the sides of your coach while turning.

A six-way, power-adjustable driver's seat provides added comfort for long trips. The passenger seat includes a footrest for extra relaxation. A driver's side window shade provides protection from the glare of the sun.

The RV Radio® includes an AM/FM stereo, CD player, MP3 input, weather band and large, easy-to-use buttons and knobs. For added convenience, the RV Radio comes with two remotes—one handheld and one on the steering wheel. Upgrade your RV Radio with the available Sirius® Satellite radio package, which brings you 130 digital channels and comes with a complimentary six-month subscription. It also includes an iPod interface cable connector so you can control and listen to your iPod through the dash stereo.



DASH You're in command when you take the wheel with controls that are conveniently positioned for easy viewing and operation.



KEY ONE Open the entrance door, storage compartments and fuel-fill doors with a single key. For added convenience, unlock and lock the entrance door with the keyless remote.



BATTERY DISCONNECT SWITCH A chassis battery disconnect switch is conveniently positioned in the engine compartment and helps prevent battery drain during storage.



SIDE CAMERAS Available side-mounted video cameras provide a clear view of the sides of the coach when turning.



CAB SEATS The driver's seat sits atop a six-way power pedestal for adjustable comfort. The driver and passenger seats swivel to become additional seating in the living area.

SET UP IN SECONDS

You'll be set up and connected at the campground in no time with your Itasca Meridian. Hookups are fast and easy with a service center that includes color-coded labels and convenient features like the QuickPort® service connection hatch and QuickConnect® coupling valve. The service center also houses the full-coach water filtration system and an exterior wash station that lets you rinse off sandy shoes or outdoor equipment.

Smart Storage™ features throughout the coach let you haul more gear. These include over-the-rail, pass-through compartments for oversized items and brackets for the folding step ladder. There is also a connection for a portable satellite dish in the service center (satellite dish not included).



SMART STORAGE
WEB

PASS-THROUGH STORAGE Large over the rail pass-through storage compartments with side-hinged doors let you bring along large, bulky items. Rotocast compartments are durable and easy to clean.



SERVICE CENTER Color-coded labels make campground hookups quick and easy.



EXTERIOR ENTERTAINMENT CENTER Sit back and watch the sunset while listening to your favorite tunes on the AM/FM stereo or CD player.



LADDER This available folding ladder fits neatly into the storage compartment.



SERVICE CONNECTIONS The QuickPort® service connection hatch is fast and simple, allowing the bay door to close while your hookups are connected. The QuickConnect® coupling valve on the sewer hose makes for quick and clean hookups and has its own storage holster.

FREIGHTLINER XC CHASSIS

The Itasca Meridian is offered exclusively on a Freightliner XC Chassis specifically designed and created for diesel-pusher motor home applications. It offers an exceptionally smooth ride with integrated front and rear suspension, and steering geometry that helps eliminate bump steer.

Freightliner has a well-known reputation for building top-quality chassis and vehicles, backed with a service network that is second to none. Over 400 service locations in the United States and Canada, many open 24 hours a day/7 days a week, offer quick service.

The Meridian makes your adventures even more enjoyable with a standard electric patio awning and an 8,000-watt Cummins Onan® generator.



CHASSIS FEATURES

- 29,410-lbs. GVWR
- Cummins® ISB 6.7L turbo-charged diesel engine
- Allison® 6-speed electronic transmission
- Infinitely adjustable tilt-and-telescope steering wheel
- 55° wheel cut
- NeWay® front and rear air suspension
- 10,000-lb. hitch⁶
- Exhaust brake



WEB POWERLINE® This energy management system monitors electrical usage and automatically cycles appliances on and off to prevent power overloads.



WEB

ONE PLACE®

This complete systems center places frequently used switches, gauges and controls in one convenient location for easy access.



WEB TRUEAIR® Cools 40% faster and runs 10% quieter than traditional roof air units. The Coleman®-Mach® cooling unit is located in the basement, eliminating condensation runoff and creating a lower vehicle profile. The heat pump takes the chill off cool mornings without starting the furnace.



WEB TRUELEVEL® Eliminate tank-level guesswork with our exclusive TrueLevel™ holding tank monitoring system. It incorporates detector cells that read liquid levels from outside the tank. No probes means no more corrosion, just accurate readings, time after time.

08 MERIDIAN SPECIFICATIONS

WEIGHTS & MEASURES	37H NEW	39Z NEW
Length	37'7"	39'3"
Exterior Height ¹	12'2"	12'2"
Exterior Width ²	8'5.5"	8'5.5"
Exterior Storage ³ (cu. ft.)	118.2	149.5
Awning Length	19'6"	19'6"
Interior Height	7'2.5"	7'2.5"
Interior Width	8'0.5"	8'0.5"
Freshwater Capacity w/Heater ⁴ (gal.)	92	92
Holding Tank Capacity - Black/Gray ⁴ (gal.)	62 / 66	62 / 72
LP Capacity ⁵ (gal.)	28	28
Fuel Capacity (gal.)	90	90
GCWR ⁶ (lbs.)	39,410	39,410
GVWR (lbs.)	29,410	29,410
GAWR - Front (lbs.)	10,410	10,410
GAWR - Rear (lbs.)	19,000	19,000
Wheelbase	242"	262"

AUTOMOTIVE/CHASSIS	37H	39Z
Freightliner® XC Chassis Cummins® ISB 6.7L turbo-charged diesel, 350-hp, rear radiator, Allison® 6-speed electronic transmission, NeWay® front & rear air suspension, 170-amp. alternator, exhaust brake, 4-wheel ABS, Wheels stylized aluminum	S	S
Leveling Jacks hydraulic, automatic controls, Steering Wheel vinyl-wrapped, power assist w/tilt & telescoping, Trailer Hitch ⁶ 10,000-lb. drawbar/500-lbs. maximum vertical tongue weight & 7-pin wiring	S	S

CAB AREA & DRIVER CONVENIENCES	37H	39Z
C.B. Wire Prep 12-volt DC power supply, Cab Seat (Driver) 6-way/power-assist, Cab Seat (Passenger) w/footrest, Cab Seats (UltraLeather™) armrests, lumbar support, multiadjustable slide/recline & swivel, Cruise Control , Defroster Fans auxiliary 2-speed w/instrument panel switch, Exhaust Brake Switch , Map Lights , Monitor System rearview b/w monitor w/single camera & 1-way audio, Audiovox® Power Door Lock keyless entry w/remote, Powerpoints 12-volt DC, Shade driver, window, light filtering, Stepwell Cover , Sunvisors powered, Window (Driver & Passenger) full-slider w/screen, dual-glazed, Windshield Wipers intermittent, radial arm design	S	S
Video Camera System side-mounted cameras	0	0

ENTERTAINMENT	37H	39Z
Entertainment Center (Exterior) DC receptacle, AC duplex receptacle, AM/FM radio w/CD player & remote, radio antenna, speakers, lockable compartment, Home Theater Sound System amplifier, CD/DVD player, receiver, speakers (5), subwoofer, RV Radio® (Cab) AM/FM stereo, CD player, weather band, iPod/MP3 input, remotes, roof-mounted flexible rubber antenna, speakers (2), Radio Power Switch main/auxiliary battery, Satellite System Ready , Telephone Input interior jacks, TV (Rear) AC 26" LCD, stereo w/remote, TV (Entertainment Center) AC 37" LCD w/remote, interior jacks, TV Enhancement Package antenna (amplified), interior jack(s), coax wiring, cable input, exterior jack, Video Selection System	S	S
Compact Multidisc Changer w/remote, Satellite Dish Antenna RV digital, automatic, Satellite Radio Sirius®, includes antenna, receiver, remote, 6-month prepaid subscription, iPod interface, Satellite Dish RV digital, in-motion, King-Dome®, Stereo System (Rear) AM/FM radio, CD/DVD player, iPod/MP3 input, front headphone jack, alarm clock	0	0

INTERIOR	37H	39Z
Ceiling vinyl, Countertops Corian® solid-surface, galley & bath, Lights ceiling, wall switches, incandescent, galley, bath & bedroom, Light decorative, dinette, Lights fluorescent, recessed, galley, dinette, bath, hallway & lounge w/wall switches, Lights reading, lounge, bedroom area, Mini Blinds galley & bath areas, Roof Vent bath area, powered fan, Roof Vent galley, powered ventilator fan, Curtain front wraparound, Shades pleated, day/night w/blackout, lounge, dinette & bedroom areas, Windows dual-glazed/thermo-insulated/flush-mounted	S	S

FURNITURE	37H	39Z
BenchMark® Full-Comfort Dinette (Fabric) w/access to storage below, child seat tether anchor, Entertainment Center , Rest Easy® Multi-Position Lounge (Fabric) throw pillows, Sofa/Bed (Fabric) access to storage below, throw pillows	S	S
Dining Table/Bufferet & Chairs freestanding (2), folding (2), Euro Recliners w/ottoman (2) , Rest Easy Multi-Position Lounge (UltraLeather) throw pillows, Sofa/Bed (UltraLeather) access to storage below, throw pillows	0	0

GALLEY	37H	39Z
Cutting Board slideout, Faucet single-control w/pullout sprayer, Moen® Microwave/Convection Oven w/range fan, exterior vent, residential 30," Sharp® Pantry , Range Top 3-burner, sealed burners, range cover, Amana® storage below, Recycling Center , Refrigerator/Freezer 4-door w/icemaker, Titanium Touch™ stainless finish, Norcold® Sink Covers countertop material, Water Filtration System Aqua-pure®	S	S

BATH	37H	39Z
Cabinet lavatory, Cabinet(s) linen/storage, Faucet (Lavatory) single-control, Faucet (Shower) dual-control, Light shower, Lights makeup, Showerhead handheld w/ water saver valve, Shower Door textured glass	S	S
Shower Seat fold-down	O	O

BEDROOM	37H	39Z
Bed queen, Serta® innerspring w/underbed storage, bedspread, pillow shams, throw pillow, headboard	S	
Bed Sleep Number® queen-size mattress by Select Comfort™	O	
Bed king, Serta, innerspring, bedspread, pillow shams, throw pillow, headboard, bench	S	
Bed Sleep Number king-size mattress by Select Comfort	O	

EXTERIOR	37H	39Z
Air Horns under hood, Awning patio, electric w/wind sensor & remote, Awning Rails w/rain gutters, Door entrance w/ screen door, deadbolt lock, keyless entry, remote, Entrance Door Step double, electric w/doorjamb switch, Ladder , Lights porch, patio, Light service, driver's side, Fuel-Fill Doors locking, Mirrors electric remote w/defrost, turn signal, Mud Guard full-width, rear, Receptacle AC duplex, Sidewall Skin 1-piece smooth fiberglass, high-gloss, Storage Compartments smooth valance panels, side-hinged below sliderooms, TriMark® KeyOne™ System, paddle latch, lights	S	S
Awning entry door, electric, Front Protective Mask , Step Ladder folding	O	O

SYSTEMS	37H	39Z
HEATING & A/C – Automotive Heater/Air Conditioner blend air system, Furnace 40,000 BTU, TrueAir® Residential Central Air Conditioning w/heat pump	S	S

SYSTEMS	37H	39Z
ELECTRICAL – Auxiliary Start Circuit, Batteries (Coach) deep-cycle (3), Battery (Chassis) Disconnect System , Battery (Chassis) Charger/Maintainer , Dual Battery charge control (automatic), Electrical Distribution System AC & DC breaker panels, Generator 8,000-watt, Cummins Onan® Quiet Diesel™, Generator/Shoreline Automatic Changeover Switch , OnePlace® Systems Center wall-mounted, courtesy light, battery digital voltmeter, PowerLine energy management display, generator hourmeter gauge, generator start/stop switch, heating & A/C thermostat, holding tank levels, LP tank level, solar panel/battery charger light, water heater switch, water heater light & pilot indicator light, water pump switch, water tank level, Power Cord 50-amp., PowerLine Energy Management System , Service Center (Electrical) cable TV input, power cord, shoreline/generator automatic changeover switch, telephone input, portable satellite dish hookup, QuickPort® service connection hatch, leveling switch, inverter/charger DC/AC, 2,000-watt inverter, exterior service lamp switch, Solar Panel 10-watt battery charger	S	S
Generator Automatic Start System	O	O
PLUMBING – Drain 1½" water tank, Service Center (Drainage/Water) exterior service lamp switch, drainage valves, holding tank flushing system, 10' sewer hose w/ QuickConnect® coupling valve, QuickPort service connection hatch(es), city water diverter fill, drain for freshwater system, exterior wash station w/pump switch, Tank flushing system, black tank only, Tank holding, heated compartment, Tank LP, permanent mount w/gauge, TrueLevel™ Holding Tank Monitoring System , Water Heater 10-gallon electronic ignition, LP gas/120 VAC w/motoraid, Water Hookup city, Washer/Dryer prep, Water Pump demand, Water Tank Fill pressurized city hookup w/diverter valve, Water System Filtration Package replaceable filter, filter housing, wrench, Water System Winterization Package water heater bypass valve & siphon tube	S	S
Washer/Dryer Combination	O	O

SAFETY	37H	39Z
Assist Bars interior, Assist Handle exterior w/logo, Bumpers front & rear, Child Seat Tether Anchor , Detectors/Alarms LP leak, smoke, carbon monoxide, Fire Extinguisher 10 BC, Fog Lamps , Ground Fault Interrupter , Lamp(s) aux. side illumination, Light high-mount brakelamps, Light(s) courtesy w/wall switch(es), Seat Belts cab, 3-point, Seat Belts lap (in selected areas), Window escape, Windshield laminated safety glass, 1-piece	S	S

WARRANTY ⁷	37H	39Z
12-month/15,000-mile basic warranty ⁸	S	S
36-month/36,000-mile limited warranty on structure ⁸		
10-year limited parts & labor warranty on roof skin ⁸		

- The height of each model is measured to the top of the tallest standard feature and is based on the curb weight of a typically equipped unit. The actual height of your vehicle may vary by several inches depending on chassis or equipment variations. Please check with your dealer for further information.
 - Meridian floorplans feature a wide-body design – over 96" In making your purchase decision, you should be aware that some states restrict access on some or all state roads to 96" in body width. Before making your purchase decision, you should confirm the road usage laws in the states of interest to you.
 - The load capacity of your motor home is designated by weight, not by volume, so you cannot necessarily use all available space when loading your motor home.
 - Capacities are based on measurements prior to tank installation. Slight capacity variations can result due to installation applications.
 - Capacities shown are tank manufacturer's listed water capacity (W.C.). Actual filled LP capacity is 80% of listing due to overfilling prevention device on tank.
 - Actual towing capacity is dependent on your particular loading and towing circumstances which includes the GVWR, GAWR, and GCWR as well as adequate trailer brakes. Please refer to the Operator's Manual of your vehicle for further towing information.
 - See separate chassis warranty.
 - See your dealer for complete warranty information.
- NA Not Available
S Standard
O Optional

Not all items available in combination. See dealer for details.

Winnebago Industries® continuing program of product improvement makes specifications, equipment, model availability, and prices subject to change without notice. Comparisons to other motor homes are based on the most recent information available at printing.

08 MERIDIAN FLOORPLANS



Carpet

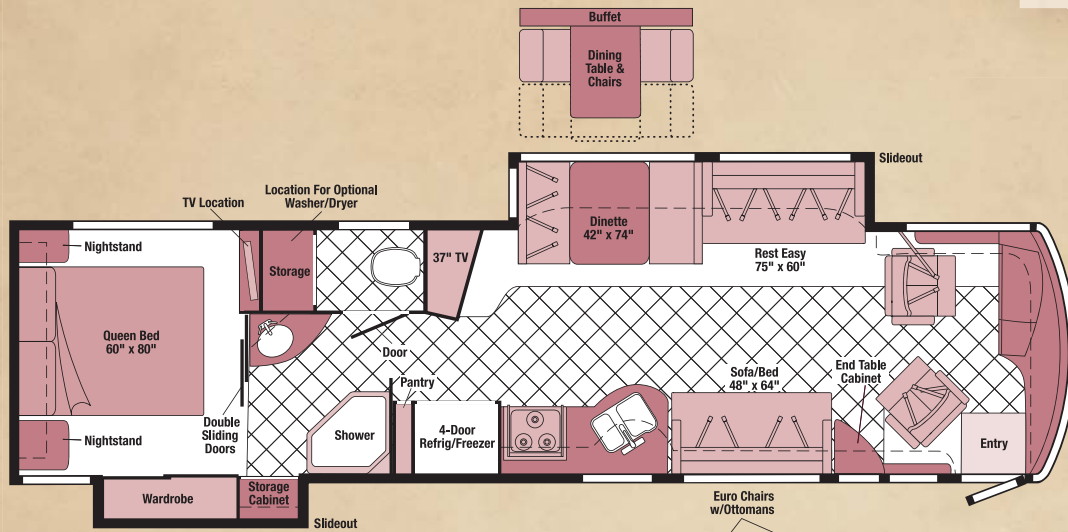


Vinyl Tile Floorcovering

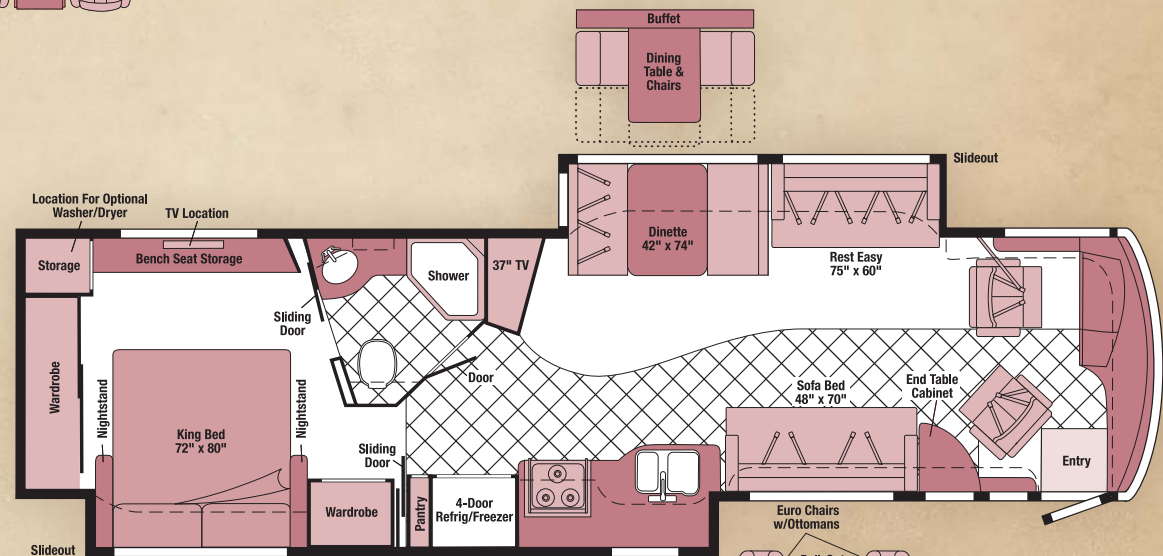
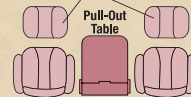


Seat Belts

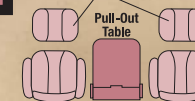
Note: Dimensions shown are for sleeping space only and may vary due to styling differences. Dashed lines denote overhead storage areas.



37H
NEW



39Z
NEW

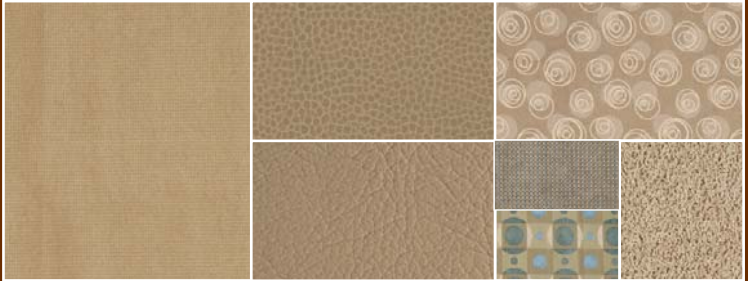


INTERIOR DECOR

Choose from three fabric selections and one cabinet wood choice with hidden hinges.



MAIN	ULTRA-LEATHER	BEDSPREAD	
		ACCENT	CARPET
		ACCENT	



Harbor Lights w/available Briarwood/Timber UltraLeather™



Paisley Court w/available Truffle/Fields UltraLeather



Brighton Bay w/available Briarwood/Timber UltraLeather



Honey Cherry

FULL-BODY PAINT



Canyon Haze



Deep Ruby



Brownstone

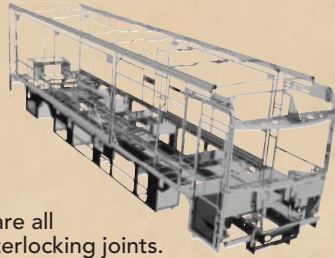


**BUILT BY WINNEBAGO INDUSTRIES.
BUILT TO LAST.**

Itasca motor homes are built by Winnebago Industries, the company that defined motor homes. The company that built its reputation on quality construction. The company that transformed the motor home concept into a way of life.

Today, Winnebago Industries brings that reputation for quality and its 49-year history of motor home innovation to the design and construction of every motor home. It's all a part of SuperStructure,[®] our exclusive system of proprietary structural components that instills each motor home with improved strength and durability.

SOLID FOUNDATION Steel and aluminum truss work provides a solid, flat foundation for the floor and sidewalls. Winnebago Industries engineers also take special care to distribute the weight of components to ensure proper handling and stability.



**SUPER
STRUCTURE**

WEB



INTERLOCKING JOINTS

The floor, sidewalls and roof are all integrally connected using interlocking joints. This creates a coach body that acts as a cohesive unit for improved strength and durability.

E-COATING Winnebago Industries employs an exclusive 12-stage automotive-style dip tank process to apply an advanced electrodeposition coating on critical steel components for superior corrosion protection.

THERMO-PANEL[®] SIDEWALLS Invented by Winnebago Industries, Thermo-Panel construction combines a fiberglass panel, high-density, block-foam insulation and aluminum support structures to create some of the most durable, lightweight sidewalls in the industry.

ATTENTION TO DETAIL Whether it's sending every coach through a high-pressure water tunnel to check for leaks or labeling each individual wire and bar-coding parts to save time and frustration during service, Winnebago Industries considers every detail to ensure your Itasca motor home provides you with years of pleasure.

STRONG AS STEEL Appliances are secured directly to embedded steel plates for added safety. Windshields are also mounted in steel with an automotive-style sealant; lesser designs use a rubber gasket to mount the windshield in fiberglass.



1-year-old Itasca fiberglass roof



1-year-old competitor's rubber roof

FIBERGLASS ROOF The Meridian features a crowned, one-piece fiberglass roof, backed with a 10-year limited parts-and-labor roof skin warranty. Fiberglass offers superior strength, attractiveness and durability over the rubber roofs found on many competitive models which can chalk, streak and degrade over time. Fiberglass also provides increased puncture and tear resistance.



TAKE A TOUR We're proud of our process, state-of-the-art facilities and the people who make Winnebago Industries number one. We invite you to visit our factory in Forest City, Iowa, for a first-hand look at the dedication and technology behind every motor home we build.



RECOGNIZED QUALITY The Recreation Vehicle Dealer Association annually rates RV manufacturers and awards the Quality Circle award to manufacturers who provide exceptional products, service and support. Winnebago Industries is proud to be the only manufacturer to receive this award every year since its inception.



COMMITTED TO SERVICE We back our motor homes with the industry's best service after the sale.

- 12-month/15,000-mile basic limited warranty
- 36-month/36,000-mile warranty on structure
- Standard 10-year limited parts-and-labor roof skin warranty
- Complimentary 24-hour roadside assistance program
 - RV Technical Assistance Hotline
 - RV Service Appointment Assistance
 - Emergency Trip Interruption
 - Emergency Message Service
 - Nationwide Trip Routing
 - Fee-Free Travelers Cheques
- TripSaver Fast Track Parts. TripSaver guarantees that in-stock warranty parts ship directly to your dealer within 24 hours.
- National dealer service network



WIT CLUB Itasca owners are like family. Joining the Winnebago-Itasca Travelers is a great way to meet and travel with other Itasca enthusiasts. Members enjoy:

- Caravans and rallies
- Local and state group activities
- RV travel benefits



WINNEBAGOIND.COM
Visit us on the web for more info on all of our motor homes, the latest product updates and a host of web-exclusive content.

For Sales and Service Information Contact:



Built proudly by



NYSE listing: WGO

©2007 Winnebago Industries, Inc.

Printed in USA

Seat belts are your most important hookup. Always buckle up.