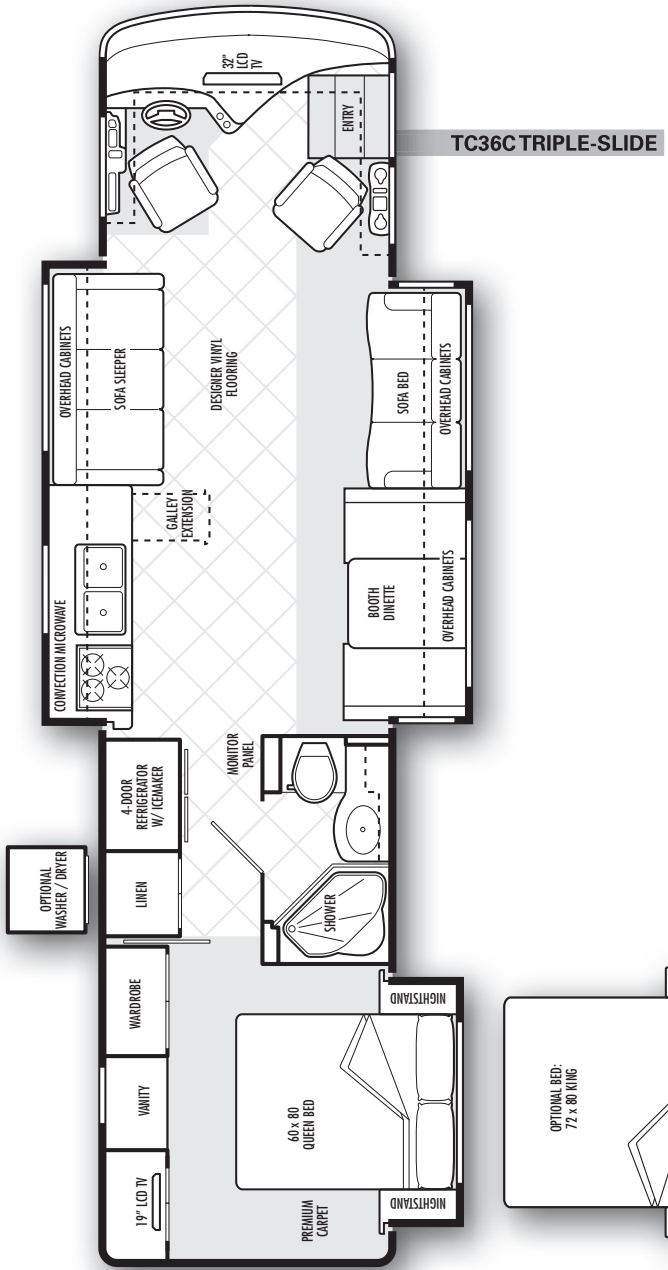
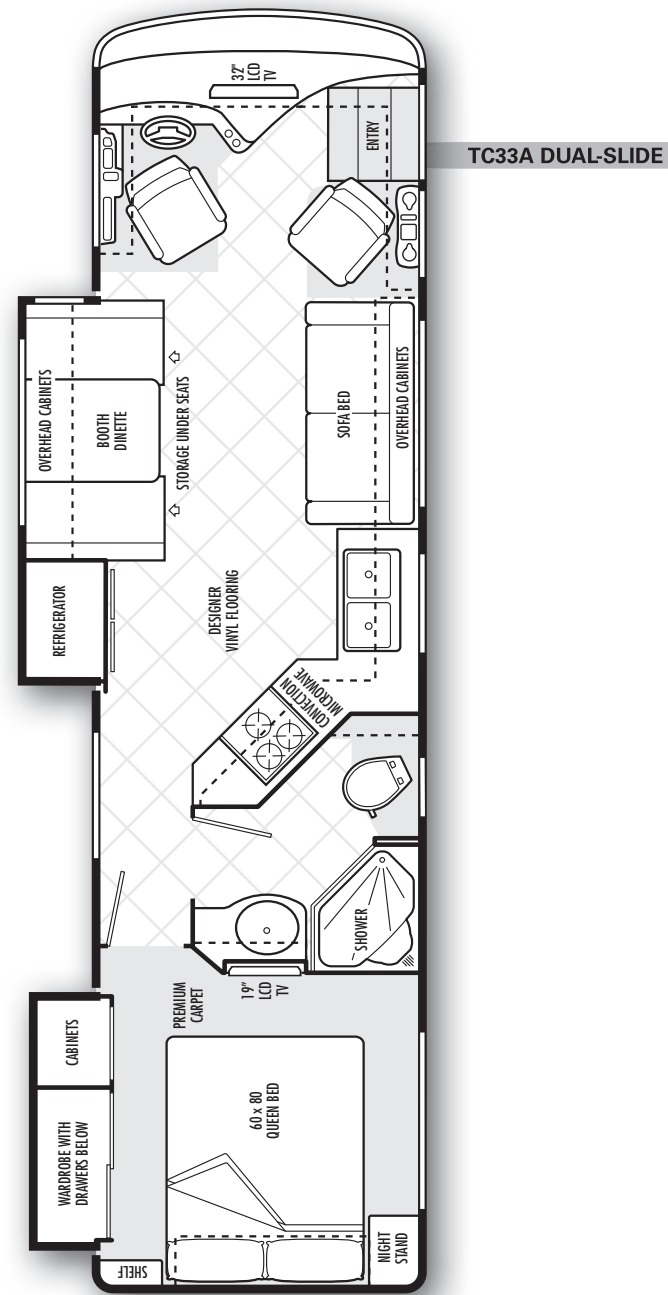


FLOOR PLANS

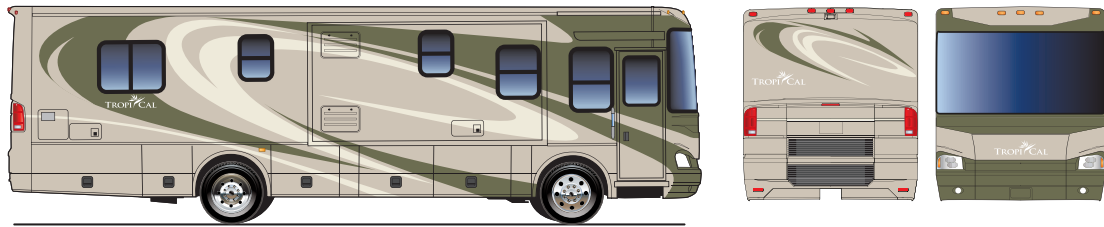


EXTERIORS

Cabana Wine



Island Oasis



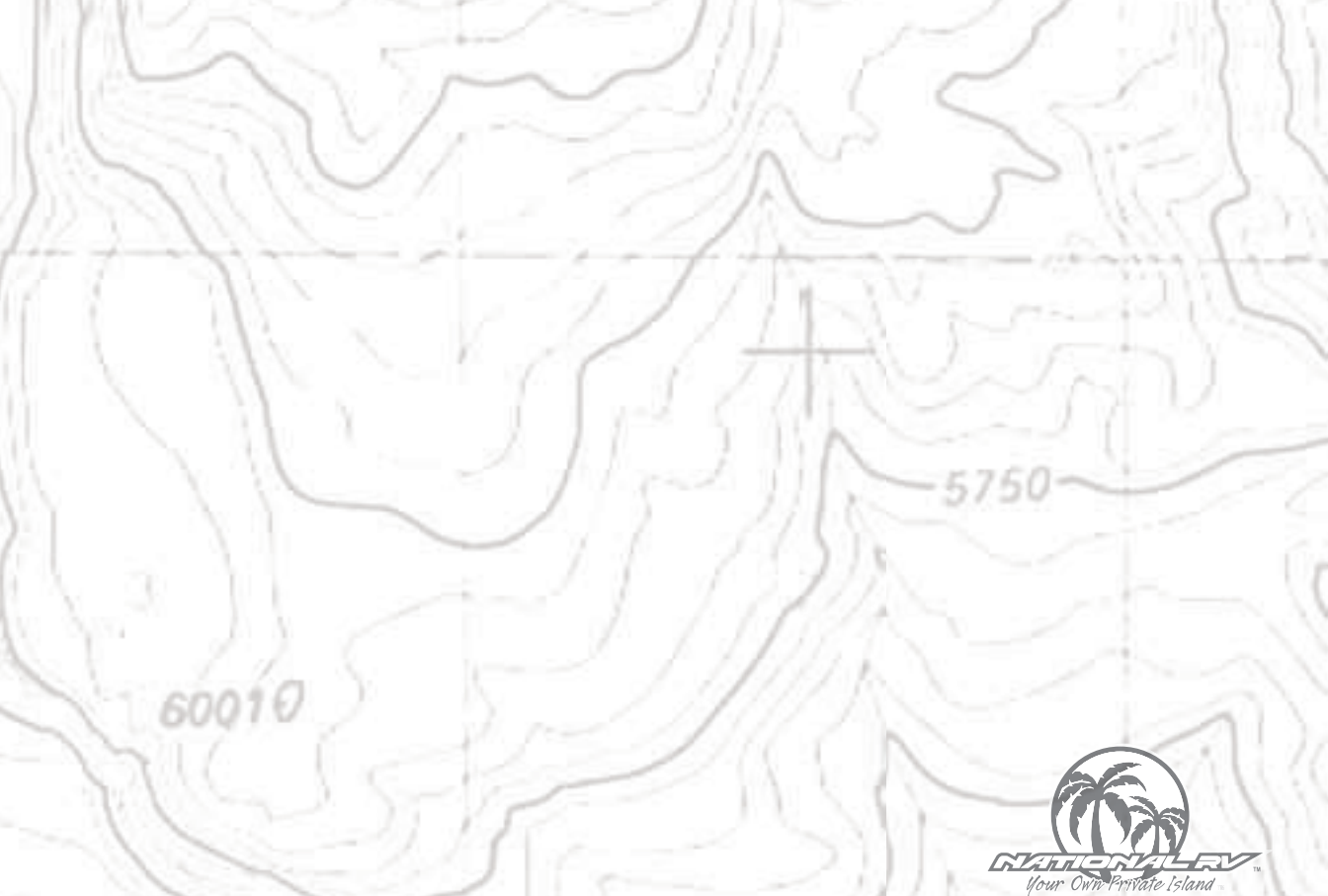
Tahitian Shade



www.nationalrv.com
3411 N. Perris Blvd
Perris, CA 92571
1.800.322.6007



©2007 by National RV, Inc.
All information, illustrations and specifications in this publication are valid at time of printing. National RV reserves the right to make changes at any time, without notice, to any equipment, specifications, features, options, packages or models depicted in this brochure.
180712V2



SPECIFICATIONS

CHASSIS FEATURES
Duraframe® patented steel sub floor construction
Freightliner® XCR Diesel Chassis ^a
Cummins® ISB electronic turbodiesel (6.7L) Engine ^b
Allison® 2500MH 6-speed auto Transmission ^c with overdrive
Full air brakes with ABS
Push button electronic shifter W/ digital display
Polished aluminum wheels
10,000 lb. Class III hitch with 7-pin electrical connector ^d
Leece-Neville® 170 Amp Alternator
Neway® Full air ride suspension with manual air dump
Cummins® exhaust brake integ. W/ variable geometry turbo

^a Freightliner® Chassis warranty 3 years/50,000 mi.
^b Cummins® Engine warranty 5 years/200,000 mi.
^c Allison® Transmission warranty 5 years/200,000 mi.
^d Actual towing capacity is dependent on load and tow circumstances are based on GVWR, GAWR and GCWR.
^e Overall height is based on standard specifications and does not included any optional equipment added. Models equipped with Kingdome® satellite add 8" to height.
^f Fresh Water Capacity includes the capacity of the water heater.



MEASUREMENTS	TC33A	TC36C
Overall length	33'-11"	36'-10"
Overall height ^a	12'-3"	12'-3"
Exterior width	102"	102"
Interior height	85"	85"
Interior width	97"	97"
Fuel Capacities	100 gal.	100 gal.
Water Heater	10 gal.	10 gal.
Gray Tank	50 gal.	60 gal.
Black Tank	40 gal.	40 gal.
Fresh Water Capacity ^f	105 gal.	105 gal.
Propane Gas (vol. w.c.)	40.5 gal.	40.5 gal.
GVWR	28,000	28,000
GCWR	33,000	33,000
GAWR (front)	10,500	10,500
GAWR (rear)	17,500	17,500
Wheelbase	193	228
Tires	255/70R 22.5	255/70R 22.5
Tow Hitch Capacity	10,000 lbs.	10,000 lbs.
Axle Ratio	4.78:1	4.78:1
Peak HP	340 HP @ 2,400 RPM	340 HP @ 2,400 RPM
Peak Torque	660 lb./ft @ 1,600 RPM	660 lb./ft @ 1,600 RPM

STANDARD FEATURES

COACH BODY CONSTRUCTION
DuraFrame® patented steel sub floor construction
Steel framed laminated floor
Steel framed crowned laminated fiberglass roof
Steel framed laminated fiberglass high gloss sidewalls
Steel cockpit overhead construction
Front and rear molded high gloss fiberglass caps
One-piece tinted windshield
Hinge door located at front cap generator
Auxiliary air manifold with air hose
Electric slide-out rooms (<i>flush floor on lounge slide models only</i>)
Aluminum exterior storage compartment doors with gas struts, side-hinged for easy access on most applications
Steel framed exterior storage compartment with insulated floors
Black aluminum rear ladder
Awning rail/rain gutter with drip spouts
Automotive undercoating
Steel insulated front bulkhead
Custom full body paint available in choice of three color schemes
Grey "National RV" logo on rear cap
<i>Big Box</i> construction with 85" interior height
Dual fuel fills
FURNITURE
Driver seat with adjustable armrests
Kustom-Fit® soft touch UltraLeather™ 6-way power driver seat with swivel base
Kustom-Fit® soft touch UltraLeather™ manual passenger seat with swivel base
Power footrest on passenger seat
Kustom-Fit® Wonder-Bed® fabric sleeper sofa
Kustom-Fit® Hide-A-Bed® fabric sleeper sofa with air mattress (<i>TC36C only</i>)
APPLIANCES & ACCESSORIES
13 cu. Ft. 4-door Dometic® black refrigerator W/ icemaker
High output three burner cook top with flush mount Premium Solid Surface® range cover
Convection microwave oven with carousel, built-in light and fan
Cable TV outlets in living room and bedroom areas
Multiple telephone jacks
TV antenna
32" LCD TV in living area (<i>overhead cockpit</i>)
19" LCD TV in bedroom

Video control box with antenna boost
DVD player with remote control
Pre-wired for satellite dish
COCKPIT FEATURES
Rear vision system with cockpit monitor and black and white motorized rear camera with built-in microphone
Driver and passenger reading lights with switches
Custom designed ergonomic dash with full gauge package
Low mount automotive-style tandem windshield wipers
Roof mounted dual chrome trumpet horns
Power steering
Douglas® tilt and telescoping steering wheel W/ cruise control
Dual 2-speed overhead dash fans
Low mounted heated power convex rear view mirrors w/ signals
12V and 120V receptacles and phone jack
Manual driver and passenger sun visors
Wrap-around privacy curtain with easy reach wand
Manual driver side window sun shade
Fully Automatic 4-point leveling jacks with mounted controls
Generator hour meter and auxiliary start switch on dash
Illuminated step well with electric cover & floor mats
ELECTRICAL SYSTEMS
50 Amp 120V distribution panel
50 Amp shore power cord
12V distribution panel with re-settable push button circuit breakers
8.0 kW Onan® Quiet Diesel® generator Series
(4) 6V deep cycle house batteries
2,000 watt inverter/converter with remote on/off switch
(2) 760 CCA 12V maintenance-free chassis batteries
Battery disconnect switch for house batteries
Systems monitor panel
Amber porch light with interior switch
Lighted storage compartments and service area
Patio 120V receptacle and phone jack
Recessed fluorescent lights in ceiling with wall mounted switches
Designer light fixtures in living and bedroom areas
Cosmetic light in bathroom
Three water pump switches in kitchen, bathroom and service area
Pre-wire for solar panel
Battery voltage meter in monitor panel
GFI protected electrical circuit
Courtesy light at entry-door switch panel

WINDOWS, DOORS & AWNINGS
Dual pane radius tinted safety glass windows
Manual Patio awning with black metal cover and hardware
Electric entry door awning with black hardware
30" wide entrance door with clear glass window and screen door
Power entrance step with light and anti-skid surface
Ventilated windows on endwalls of lounge slide-outs
Slide-out topper awnings
Window in toilet room
Tinted skylight in bathroom
INTERIOR
Natural Maple finish paneling and doors
Padded Vinyl ceiling
Tele-strut hardware on overhead doors and positive catches
Full extension drawers with ball bearing roller guide
Day/night shades with designer valances W/ easy-grip rails
LIVING AREA
Booth dinette with slide-out storage baskets under seats
Plush carpet with deluxe pad
KITCHEN AREA
Slide-out pantry
Premium solid surface kitchen countertop extension accented backsplash and flush mount stove cover
Large Stainless steel double-sink configuration
Premium Solid Surface sink covers
Designer vinyl tile flooring
Mini-blind with valance
Silverware organizer tray
BATH AREA
Designer vinyl tile flooring
Decorative glass shower door
Laminate bathroom countertop with decorative edge
Stainless steel bathroom sink
Medicine cabinet
BEDROOM AREA
Plush carpet with deluxe pad
Day/night shades with designer valances
Cedar lining in wardrobe and bed storage compartment
Automatic lighted wardrobe with mirrored doors
Bedspread, pillows and shams
Queen bed with under bed storage compartment (<i>Select models only</i>)
Sandpiper Deluxe™ residential-style queen size pillow top mattress

PLUMBING SYSTEMS
Heated systems compartment with easy access to hook-ups
On demand water system and water pump
Holding tank rinsing system (black tank only)
Winterization antifreeze inlet to pump
Outside shower located in service compartment
Water heater bypass valve
Pressurized water fill with integrated regulator
10 gal. quick-recovery water heater W/ direct spark ign. (<i>gas/electric</i>)
Water filter
Single lever faucet with detachable gooseneck sprayer
One piece fiberglass shower
Handheld shower head W/ flexible hose and vertical adjustment bar
Low profile porcelain toilet with sprayer
Single lever bathroom faucet
Pre-plumbed for optional washer/dryer (<i>TC36C only</i>)
SAFETY/SECURITY
Fog lights
Driver and passenger three point seat belts
Deadbolt lock on entrance door
Exterior entry assist handle
Interior entry assist handle
Fire extinguisher
Smoke, carbon monoxide (CO) and propane leak detectors
Emergency exit window
Daytime running lights (<i>CSA units only</i>)
Hand activated ICC flasher switch on side console (momentary)
Rear third brake light
Toilet assist handle (<i>TC33A only</i>)
CLIMATE CONTROL
Two thermostatically controlled dual 13,500 BTU ducted low profile black roof A/C(s) with heat pump
35,000 BTU electronic ignition furnace
Ducted heating system
Pre-wire for 12V Fan-Tastic® Vent with wall thermostat & rain sensor in bedroom
12V roof exhaust fan in bathroom and galley
Non-powered roof vent in bedroom
Dash automotive heating and air conditioner system with defroster

OPTIONAL FEATURES

COACH BODY CONSTRUCTION
Protective film front mask
Full width mud flap with logo
Single directional slide-out storage tray
FURNITURE
6-way power adjustment and power footrest on passenger seat
Kustom-Fit® Wonder-Bed® UltraLeather™ sleeper sofa
Soft touch UltraLeather® Hide-A-Bed® sleeper sofa with air mattress (<i>TC36C only</i>)
APPLIANCES & ACCESSORIES
High output three burner cook top with range/oven
Home theater entertainment package includes DVD digital receiver and subwoofer/speaker system
Kingdome® automatic stationary satellite dish
Combination washer/dryer (<i>TC36C only</i>)
Central vacuum system

COCKPIT FEATURES
Sirius® satellite radio module with 6 month subscription
Color rear vision system with microphone and side view cameras (three camera system)
Electric sun visors on Driver and Passenger side
Keyless entry
WINDOWS, DOORS & AWNINGS
Electric Patio awning with black metal cover and hardware
Exterior windshield sun screens
INTERIORS
Natural Cherry finish paneling and doors
Stained Cherry finish paneling and doors
CLIMATE CONTROL
Two 15,000 BTU ducted low profile black roof A/C W/ heat pump
12V Fan-Tastic® Vent with wall thermostat & rain sensor in galley
12V Fan-Tastic® Vent W/ wall thermostat & rain sensor in bedroom