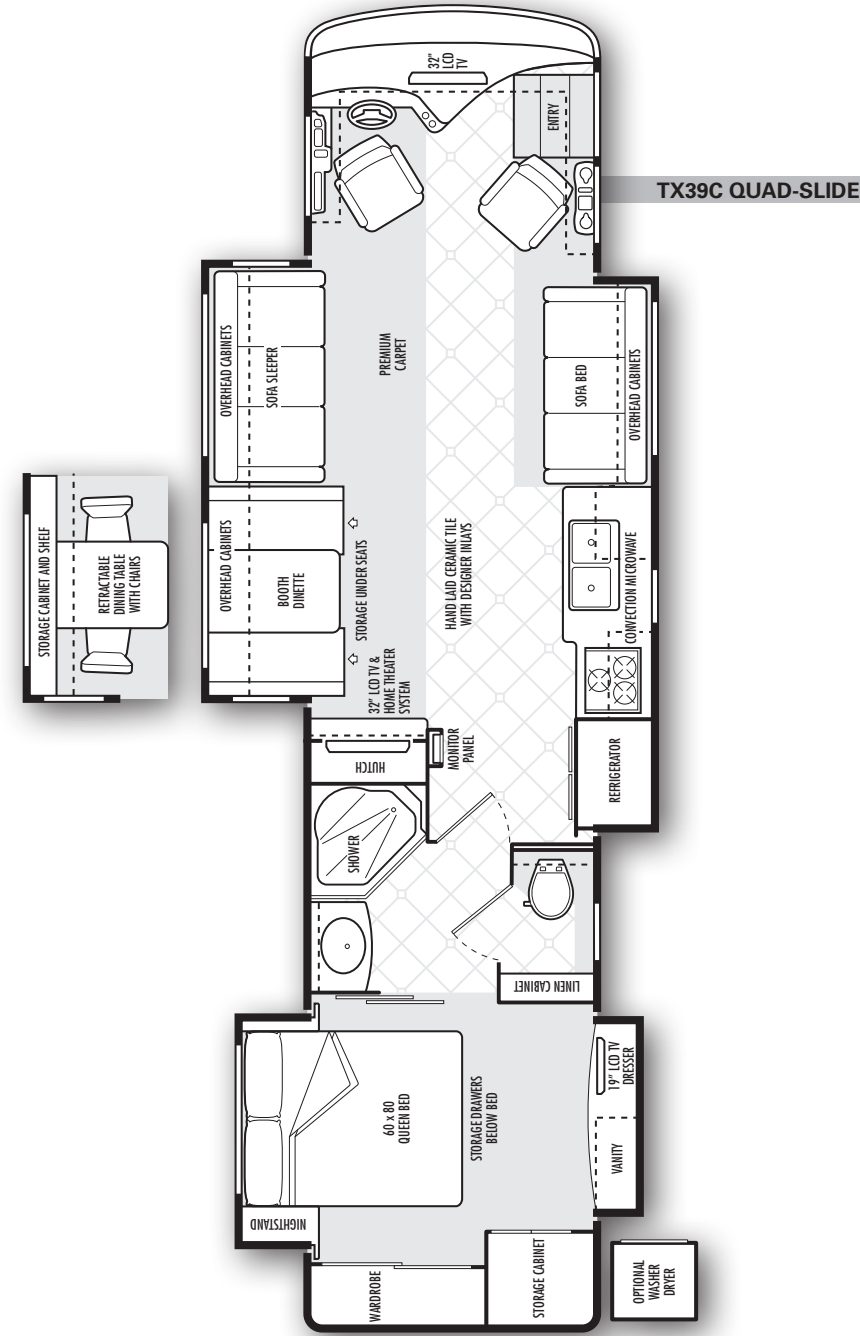
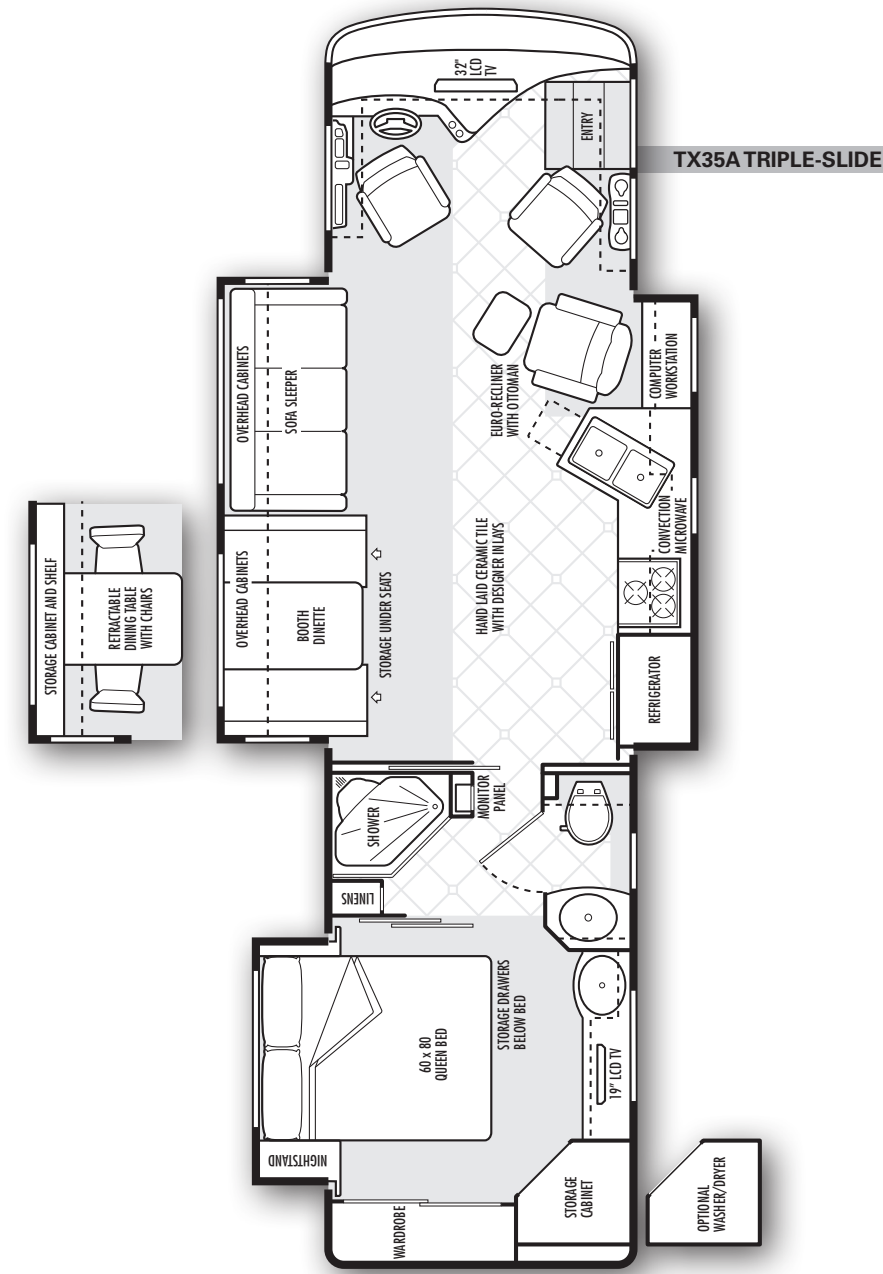
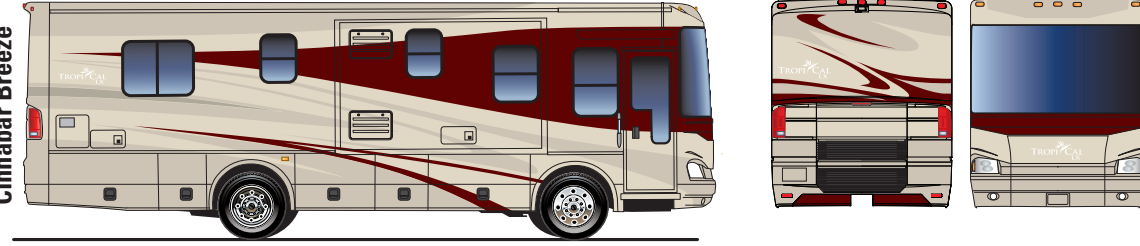


FLOOR PLANS



EXTERIORS

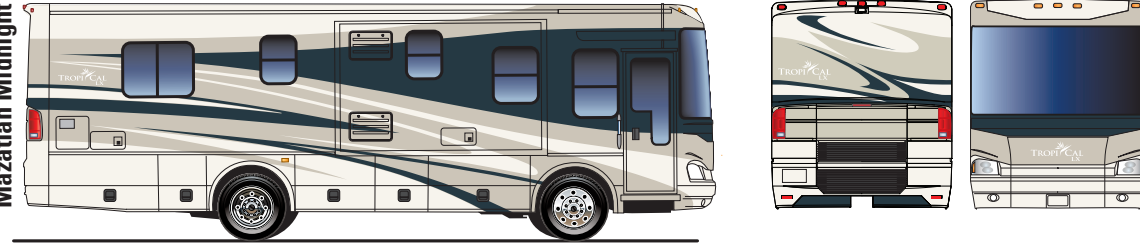
Cinnabar Breeze



Golden Paradise



Mazatlan Midnight



TROPICALIX

www.nationalrv.com
3411 N. Perris Blvd
Perris, CA 92571
1.800.322.6007



SPECIFICATIONS

CHASSIS FEATURES

- Duraframe® patented steel sub floor construction
- Freightliner® XCR Diesel Chassis^a
- Cummins® ISBXT electronic turbodiesel (6.7L) Engine^b
- Allison® 3000MH 6-speed auto Transmission^c with overdrive
- Full air brakes with ABS
- Push button electronic shifter w/ digital display
- Polished aluminum wheels
- 10,000 lb. Class III hitch with 7-pin electrical connector^d
- Leece-Neville® 170 Amp Alternator
- Neway® Full air ride suspension with manual air dump
- Cummins® exhaust brake integ. w/ variable geometry turbo

^a Freightliner® Chassis warranty 3 years/50,000 mi.
^b Cummins® Engine warranty 5 years/200,000 mi.
^c Allison® Transmission warranty 5 years/200,000 mi.
^d Actual towing capacity is dependent on load and tow circumstances are based on GVWR, GAWR and GCWR.
^e Overall height is based on standard specifications and does not include any optional equipment added. Models equipped with Kingdome® satellite add 8" to height.
^f Fresh Water Capacity includes the capacity of the water heater.
 National RV, Inc. reserves the right to change materials, colors, specifications and prices at any time without notification. Copyright 2007 by National RV, Inc. 07/07



MEASUREMENTS	TX35A	TX39C
Overall length	35'-5"	39'-1"
Overall height ^e	12'-3"	12'-3"
Exterior width	102"	102"
Interior height	85"	85"
Interior width	97"	97"
Fuel Capacities	100 gal.	100 gal.
Water Heater	10 gal.	10 gal.
Gray Tank	60 gal.	60 gal.
Black Tank	40 gal.	40 gal.
Fresh Water Capacity ^f	105 gal.	105 gal.
Propane Gas (vol. w.c.)	40.5 gal.	40.5 gal.
GVWR	30,500	30,500
GCWR	40,500	40,500
GAWR (front)	10,500	10,500
GAWR (rear)	20,000	20,000
Wheelbase	208"	228"
Tires	255/70R 22.5	255/70R 22.5
Tow Hitch Capacity	10,000 lbs.	10,000 lbs.
Axle Ratio	4.78:1	4.78:1
Peak HP	350 HP @ 2,400 RPM	350 HP @ 2,400 RPM
Peak Torque	750 lb./ft @ 1,800 RPM	750 lb./ft @ 1,800 RPM

STANDARD FEATURES

COACH BODY CONSTRUCTION

- DuraFrame® patented steel sub floor construction
- Steel framed laminated floor
- Steel framed crowned laminated fiberglass roof
- Steel framed laminated fiberglass high gloss sidewalls
- Steel cockpit overhead construction
- Front and rear molded high gloss fiberglass caps and integrated bumper assembly
- One-piece tinted windshield
- Hinge door located at front cap generator
- Auxiliary air manifold with air hose
- Electric slide-out rooms (flush floor on lounge slide models only)
- Aluminum exterior storage compartment doors with gas struts, side-hinged for easy access on most applications
- Steel framed exterior storage compartment with insulated floors
- Black aluminum rear ladder
- Awning rail/rain gutter with drip spouts
- Automotive undercoating
- Steel insulated front bulkhead
- Custom full body paint available in choice of three color schemes
- Grey "National RV" logo on rear cap
- Big Box construction with 85" interior height
- Dual fuel fills
- Full width mud flap with logo
- D-ring tie-downs in basement storage compartments

FURNITURE

- Driver seat with adjustable armrests
- Kustom-Fit® soft touch UltraLeather™ 6-way power driver seat with swivel base
- Kustom-Fit® soft touch UltraLeather™ manual passenger seat with swivel base
- Power footrest on passenger seat
- Kustom-Fit® Hide-A-Bed® fabric sleeper sofa with air mattress
- Villa® UltraLeather® Euro-recliner recliner

APPLIANCES & ACCESSORIES

- 12 cu. Ft. 4-door Norcold® stainless steel refrigerator w/ icemaker
- High output three burner cook top with flush mount Premium Solid Surface® range cover
- Convection microwave oven with carousel, built-in light and fan

- Cable TV outlets in living room and bedroom areas
- Multiple telephone jacks
- TV antenna
- 32" LCD TV in living area (overhead cockpit)
- 19" LCD TV in bedroom
- Video control box with antenna boost
- Home theater entertainment package (includes DVD digital receiver and subwoofer/speaker system)
- Pre-wired for satellite dish

COCKPIT FEATURES

- Big button AM/FM stereo and CD player with four speakers and input / charger jack for full iPod® connectivity and MP3 support
- Multi-disc CD changer
- Sirius® satellite radio module with 6 month subscription
- Color rear vision system with microphone and side view cameras (3 Camera system)
- Driver and passenger reading lights with switches
- Custom designed ergonomic dash with full gauge package
- Low mount automotive-style tandem windshield wipers
- Roof mounted dual chrome trumpet horns
- Power steering
- Electronic cruise control
- Douglas® tilt and telescoping steering wheel
- Dual 2-speed overhead dash fans
- High-mounted chrome power, heated convex rear view mirrors with turn signals
- 12V and 120V receptacles and phone jack
- Electric sun visors on Driver and Passenger side
- Wrap-around privacy curtain with easy reach wand
- Manual driver side window sun shade
- Fully Automatic 4-point leveling jacks with dash mounted controls
- Generator hour meter and auxiliary start switch on dash
- Illuminated step well
- Electric step well cover
- Floor mats
- Keyless entry

ELECTRICAL SYSTEMS

- 50 Amp 120V distribution panel
- 50 Amp shore power cord

- 12V distribution panel with re-settable push button circuit breakers
- 8.0 kW Onan® Quiet Diesel generator Series
- (4) 6V deep cycle house batteries
- 2,000 watt inverter/convertor with remote on/off switch
- (2) 760 CCA 12V maintenance-free chassis batteries
- Battery disconnect switch for house batteries
- Systems monitor panel
- Amber porch light with interior switch
- Lighted storage compartments and service area
- Patio 120V receptacle and phone jack
- Recessed fluorescent lights in ceiling with wall mounted switches
- Designer light fixtures in living and bedroom areas
- Cosmetic light in bathroom
- Three water pump switches (kitchen, bathroom and exterior service compartment)
- Pre-wire for solar panel
- Battery voltage meter in monitor panel
- GFI protected electrical circuit
- Courtesy light at entry-door switch panel

WINDOWS, DOORS & AWNINGS

- Dual pane radius tinted safety glass windows
- Electric patio awning with black metal cover and hardware
- Electric entry door awning with black hardware
- 30" wide entrance door with driver-view clear glass window and screen door
- Power entrance step with light and anti-skid surface
- Ventilated windows on endwalls of lounge slide-outs
- Slide-out topper awnings
- Window in toilet room
- Tinted skylight in bathroom

INTERIOR

- Natural Maple finish paneling and doors
- Padded Vinyl ceiling
- Telestrut hardware on overhead doors and positive catches
- Full extension drawers with ball bearing roller guide
- Day/night shades with designer valances w/ easy-grip rails

LIVING AREA

- Booth dinette with slide-out storage baskets under seats
- Plush carpet with deluxe pad

- Hand laid ceramic tile flooring
- Hutch and overhead with beveled mirror (TX39C only)

KITCHEN AREA

- Slide-out pantry
- Premium solid surface kitchen countertop extension, accented backsplash and flush mount stove cover
- Premium Solid Surface backsplash with tile accents
- Premium Solid Surface sink covers
- Wastebasket
- Hand laid ceramic tile flooring
- Mini-blind with valance
- Silverware organizer tray

BATH AREA

- Hand laid ceramic tile flooring
- Decorative glass shower door
- Premium Solid Surface bathroom countertop
- Stainless steel bathroom sink
- Medicine cabinet

BEDROOM AREA

- Plush carpet with deluxe pad
- Day/night shades with designer valances
- Cedar lining in wardrobe and bed storage compartment
- Automatic lighted wardrobe with mirrored doors
- Bedspread, pillows and shams
- Slide-out queen bed with under bed storage compartment (Select models only)
- Pull-out storage drawers under bed
- Sandpiper Deluxe™ residential-style queen size pillow top mattress

PLUMBING SYSTEMS

- Heated systems compartment with easy access to hook-ups
- On demand water system and water pump
- Holding tank rinsing system (black tank only)
- Winterization antifreeze inlet to pump
- Outside shower located in service compartment
- Water heater bypass valve
- Pressurized water fill with integrated regulator
- 10 gallon, quick-recovery water heater with direct spark ignition (gas/electric)
- Water filter

- Single lever faucet with detachable gooseneck sprayer
- One piece fiberglass shower
- Handheld shower head with flexible hose and vertical adjustment bar
- Low profile porcelain toilet with sprayer
- Single lever bathroom faucet
- Pre-plumbed for optional washer/dryer

SAFETY/SECURITY

- Fog lights
- Driver and passenger three point seatbelts
- Deadbolt lock on entrance door
- Exterior entry assist handle
- Interior entry assist handle
- Fire extinguisher
- Smoke, carbon monoxide (CO) and propane leak detectors
- Emergency exit window
- Daytime running lights (CSA units only)
- Hand activated ICC flasher switch (momentary) on side console
- Rear third brake light
- Toilet assist handle (TX35A only)

CLIMATE CONTROL

- Two Thermostatically controlled 15,000 BTU ducted low profile black roof A/C w/ heat pump
- Dual 20,000 BTU electronic ignition furnaces
- Ducted heating system
- Pre-wire for 12V Fan-Tastic® Vent with wall thermostat & rain sensor in bedroom
- 12V Fan-Tastic® Vent with wall thermostat & rain sensor in galley
- 12V roof exhaust fan in bathroom
- Non-powered roof vent in bedroom
- Dash automotive heating and air conditioner system with defroster

OPTIONAL FEATURES

COACH BODY CONSTRUCTION

- Protective film front mask
- Dual directional slide-out storage tray

FURNITURE

- Soft touch UltraLeather® Hide-A-Bed® sleeper sofa with air mattress

APPLIANCES & ACCESSORIES

- High output three burner cook top with range/oven
- Kingdome® automatic stationary satellite dish w/ DSS Receiver
- Combination washer/dryer
- Central vacuum system

COCKPIT FEATURES

- Hand held Garmin GPS navigation system

WINDOWS, DOORS & AWNINGS

- Living room and bedroom window awning package
- Exterior windshield sun screens

INTERIORS

- Natural Cherry finish paneling and doors
- Stained Cherry finish paneling and doors
- Dinette table with wall cabinet with built-in table extension, two high-back wooden chairs and two wooden folding chairs
- Sandpiper Deluxe™ residential-style king size pillow top mattress (TX39C only)

CLIMATE CONTROL

- Two 15,000 BTU ducted low profile black roof A/C w/ heat pump
- 12V Fan-Tastic® Vent with wall thermostat & rain sensor in bedroom