

08 SIMBA® RD
DIESEL PUSHER



Live out **loud.**





It's all you can think about. The powerful engine.
The quiet ride. The luxury from start to finish.
And now, it's all yours — with the 2008 Simba
Rear Diesel from Safari. Whether you're headed
for the mountains, the plains, or every point in
between, the Simba RD is designed to take you
there in style. So come on, all you go-getters.
Stop daydreaming and start living.

Start living.





POWER PLAY.

It's time. Time to make your move to the power and performance of a diesel pusher. Presenting the 2008 Simba RD. This impressive coach features a big Caterpillar® 330 HP engine with Allison® 3000 MH transmission for unbeatable power when you need it most. It's not all about power, though. The Simba RD delivers luxury and comfort, as well. This year, we've upgraded the pilot seats to soft leatherette upholstery. And to help you find your way at night, there are two new recessed map lights over each seat. Ready to unwind? Flip on the beautiful new 26" LCD TV, which is already conveniently prepped for a digital satellite dish.



BENTLEY EXTERIOR

A TRUE BEAUTY, INSIDE AND OUT.

No doubt about it. You're going to turn a few heads in the Simba RD. This stunning coach now comes with full-body paint and painted graphics, *standard*. It's also blessed with new chrome head exterior mirrors and a new front door awning for 2008. Inside the coach, there are even more eye-pleasing features. Like stylish new decors. Rich hardwood finishes. Crown molding. Blackout day/night pleated shades. Even our new wooden slide-out fascia with black diamond fabric inserts. The 2008 Simba RD. Everywhere you look, there's another beautiful reason to own it.



One of the most beautiful things about the Simba RD is the amazing list of options. Just pick and choose your indulgences, and make the Simba RD your own unique coach. If you're into entertainment, we suggest the optional home theater system with surround sound and sub-woofer. And while you're at it, why not bump up the television to a 32" flatscreen LCD model? Other luxury options include a leatherette Euro-recliner with ottoman, a leatherette booth ensemble, and the always popular freestanding dinette.



BENTLEY INTERIOR WITH CHAMPAGNE SELECT, 38PBD



KITCHEN COMFORTS.

The kitchen is where folks always seem to end up, and it's easy to see why on the Simba RD. This well-designed galley has plenty of room for people, as well as pots and pans. You'll find large cabinets, a solid surface countertop and backsplash, and top quality appliances all around. New this year is a stainless steel sink with single-lever faucet and pullout sprayer. And to keep your water clean and fresh, we've even added a central water filtration system.

Newport Cherry



Champagne Select



BETTER
STAIN
PROTECTION

THE PERFECT FINISH.

At Safari, our woods and fabrics are carefully chosen to create a clean, contemporary look you're sure to love. Cabinets feature solid wood raised panel door faces for long-lasting good looks. And all fabrics receive stain protection that's manufactured in, not added on. Soil repellent is applied to virtually all upholstery fabric during the finishing process for superior coverage.*

*Brand and application of upholstery fabric protection may vary depending on date recreational vehicle was manufactured.



YOUR DREAM BEDROOM.

A big queen bed with nightstands. An oversized wardrobe with deluxe full-length mirror. Lots of overhead cabinets. Even a new 20" LCD television. We included everything you said you wanted in your dream bedroom, plus a few excellent options. Wouldn't an optional ceiling fan and bedroom DVD player be nice about now?



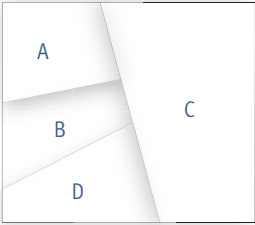
In the roomy bathroom, you'll find a one-piece fiberglass shower and laminate tile floor for easy cleaning. All bath accessories feature satin nickel, including our elegant new lavatory faucet.



SIMBA DIESEL 08 FABRICS & EXTERIOR COLORS

COLOR YOUR WORLD.

Safari coaches have a look that’s all their own. Vibrant exterior graphics coordinate with the interior’s playful patterns to provide the ideal backdrop to all your adventures. Choose the decor that’s just right for you.



- A. BEDSPREAD
- B. SOFA
- C. DINETTE
- D. CARPET



COPPER WINE




BENTLEY

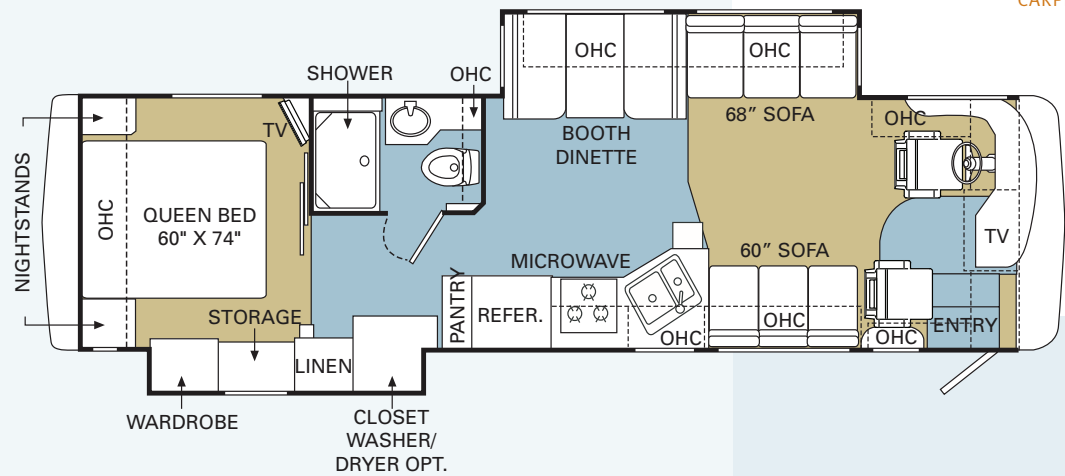


KEY LARGO

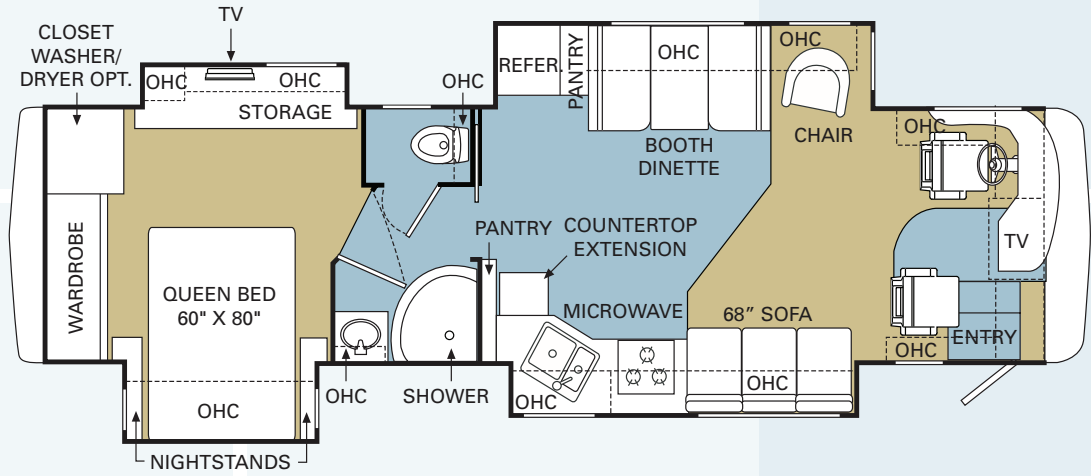
SIMBA DIESEL 08 FLOORPLANS

TILE 
CARPET 

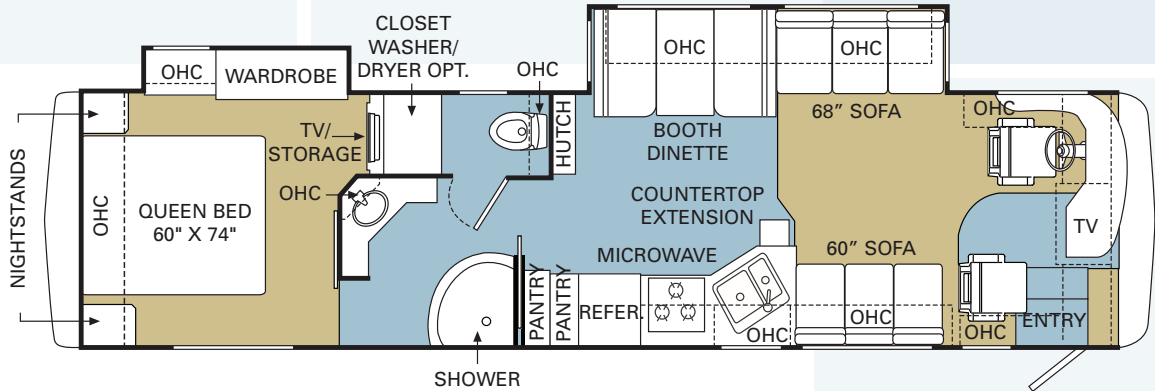
35SBD



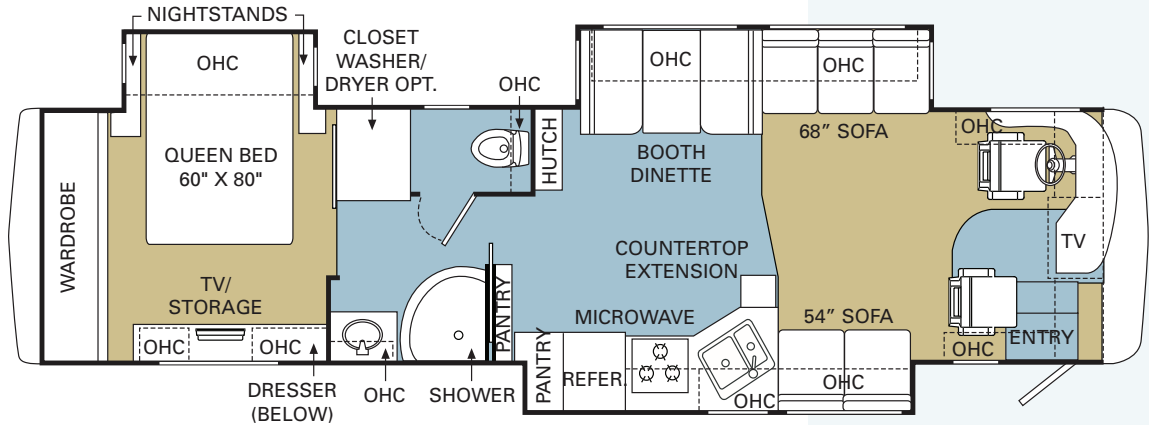
37PDQ



38PBD



39PBT

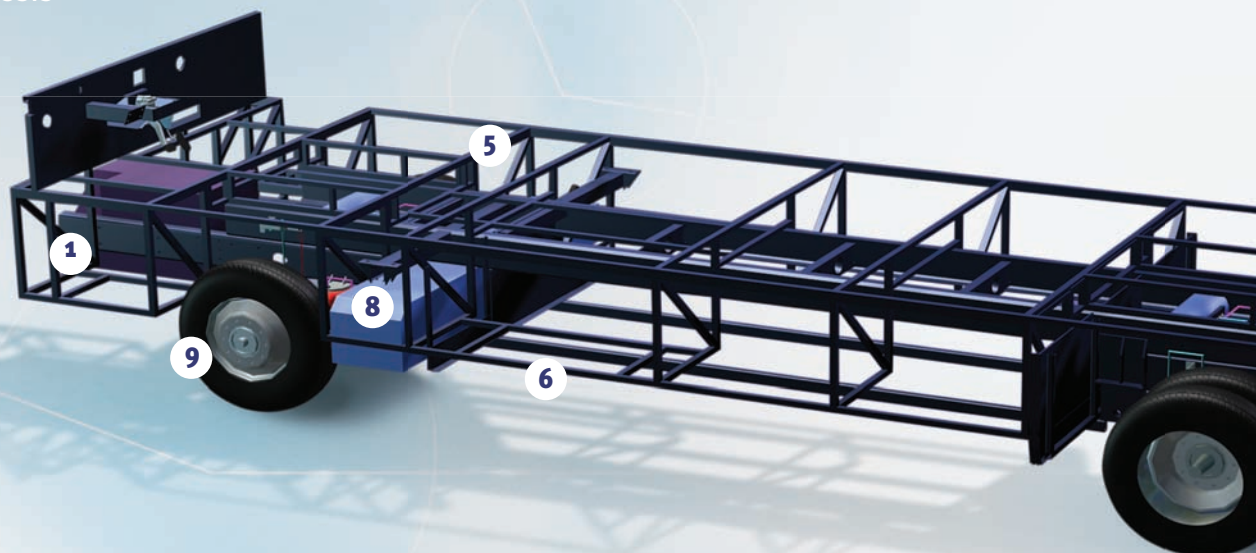


Go ahead. Play hard. We're built for it.



SAFARI® 2008 SIMBA DIESEL

RR4R - RAISED RAIL CHASSIS



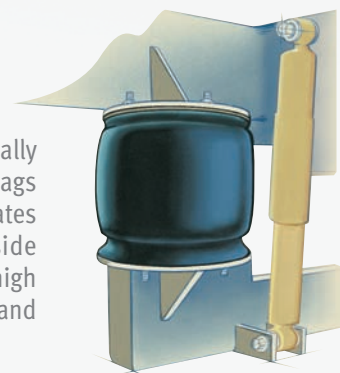
- 1 Stacked aluminum charged air cooler, aluminum radiator and external aluminum transmission cooler for optimum heat transfer and cooling.
- 2 Allison® 3000 MH 6-Speed World Transmission and electronic shifter for smooth, even shifting and added horsepower and torque. Gross combined weight rating of 33,000 pounds for a solidly built coach.
- 3 Unique 5-degree rear axle tilt for perfect alignment of engine, transmission and rear end to minimize drivetrain stress and noise.
- 4 Active suspension control system with four air bags and gas shock absorbers, with superior front-to-rear balance and sway reduction, giving superb ride and handling. Automatic traction control (ATC) eliminates wheel spin during acceleration.
- 5 Manual hydraulic leveling system (3-point leveling system, 32,000 lbs. rated) to adjust coach level for passengers' ease in entry and exit.
- 6 Heavy-duty steel undercarriage and firewall provide strength and durability.
- 7 Electronically controlled exhaust braking system, with chrome exhaust tip for engine, provides smooth braking with four-wheel anti-lock braking system (ABS) with full air brakes (drum).
- 8 Fuel tank capacity of 75 gallons and duel fuel fill for your driving and fill-up convenience.
- 9 Radial tires (255/70R/22.5) let you drive with peace of mind.
- 10 A 7,000 lb. newly designed hitch receiver with connector.

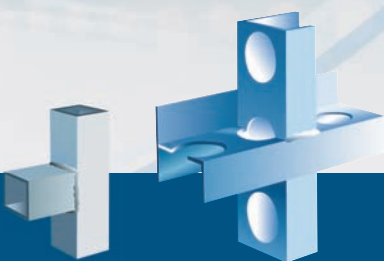
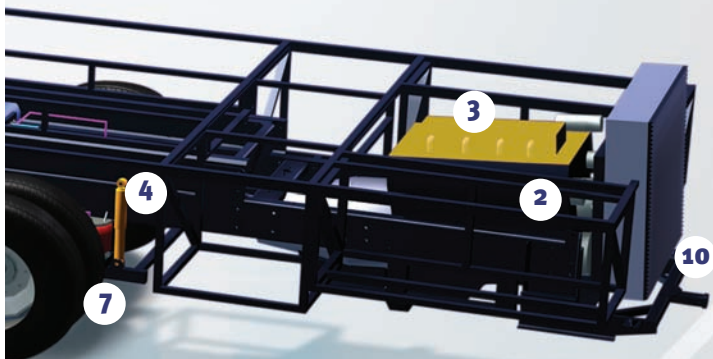


Simba's rugged CAT® C7 330 HP engine with 860 lbs./ft. of torque.

AIR BAG SUSPENSION

The active suspension automatically adjusts the pressure of the air bags as you drive and virtually eliminates nosediving and the side-to-side body sway associated with high wind conditions, curvy roads and emergency maneuvers.





Aluminum
(Butt-Welded)

Alumaframe®
(C-Channel)

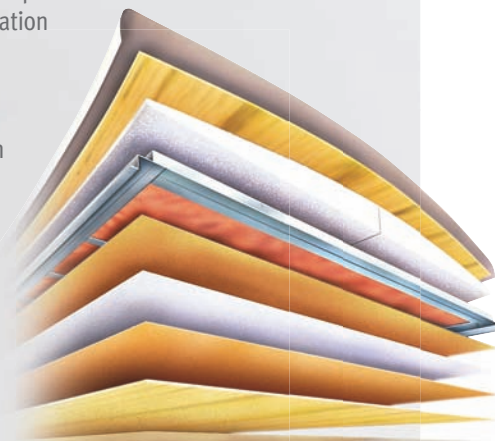
The Strength of Alumaframe®

Thanks to our Alumaframe® Superstructure, your Safari coach is built to take on anything the road can dish out. We revolutionized the industry by replacing outdated tubular aluminum construction with our exclusive system of aluminum C-Channel crossmembers. These run the full length of the coach, with double-welded intersections for superior strength. This makes your Safari lighter and sturdier than other coaches and gives you reliability you can count on down the road.



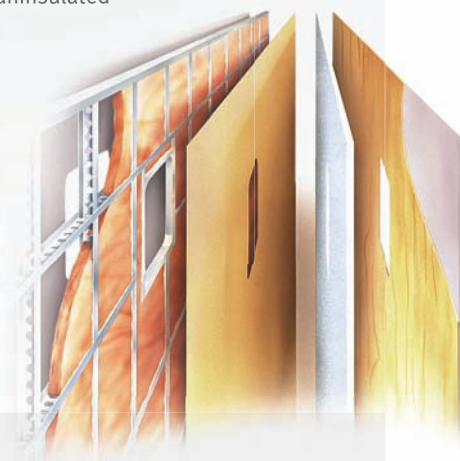
9-Layer Roof (top to bottom)

- One-piece peaked fiberglass roof
- Luaun backing
- Thick, tapered bead foam insulation
- Aluminum double I-beam superstructure filled with fiberglass insulation
- Vapor barrier
- Structure foam: thermal insulative barrier
- 1/2" bead foam insulation
- Foam padding for extra insulation
- Padded vinyl ceiling



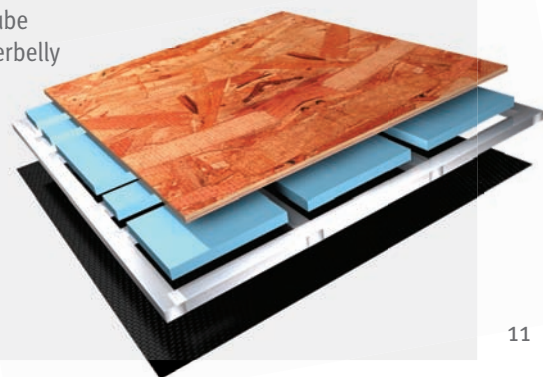
5-Layer Sidewall (left to right)

- Smooth gel coat fiberglass
- Interlocking C-Channel filled with 1-1/2" fiberglass insulation glued in place so it doesn't sag or leave spaces uninsulated
- Vapor barrier
- Bead foam adds comfort, saves energy and provides a thermal insulative barrier
- Interior paneling



4-Layer Floor (top to bottom)

- Structurwood™
- Blue foam insulation
- 1-1/2" aluminum tube
- Three-ply poly underbelly



SIMBA DIESEL 08 STANDARDS & OPTIONS

BODY CONSTRUCTION

- Alumaframe® Superstructure
- Steel Cage Cockpit Construction
- Smooth Gel Coat Fiberglass Exterior Walls
- Front and Rear Fiberglass Caps
- One-Piece Generator Access Door
- Rear Engine Doors and Center Grille
- Fiberglass Engine Cover
- Panaview™ 1-Piece Front Windshield
- Interior Height 84"
- 17.5" Chrome Head Exterior Mirror
- Metal Fuel Door with Lock
- 30" Deep Bedroom Slide-Out Houses (37PDQ, 39PBT)
- Side-Hinged Baggage Doors
- One-Piece Polyethylene Pass-Through Storage Compartments
- Full-Body Paint with Painted Graphics, Awning with Metal Covers
- Carpeted Electric Flush-Floor Stepwell Cover
- Exterior Double Entry Steps
- Rear Ladder
- Undercoating

OPTIONS

- 3M Film Front Mask
- Full-Length Mud Flap
- Storage Bay Slide-Out Tray, Pass-Through
- Standard Run Savings Package: 3M Film Front Mask, Full-Length Mud Flap, 3-Camera Rear Vision System with Audio and Adjustable Center Camera, Air Horns, Washer/Dryer Prep, 2,000 Watt Inverter with Two Additional Batteries

CHASSIS / ENGINE / SUSPENSION

- Roadmaster Raised Rail Chassis RR4R
- Caterpillar® C7 330 Electronic Engine with Allison® 3000 MH 6-Speed World Transmission and Electronic Shifter
- Engine Displacement: 7.2L /441 Cu. In.
- Torque: 860 lbs./ft. Max. Net at 1,600 RPM
- Exhaust Braking System
- Block Heater
- 75-Gallon Fuel Tank
- Dual Fuel Fill
- 160 Amp Alternator
- Rear Axle Ratio: 4.30:1
- Radial Tires: 255/70R/22.5
- Stainless Steel Wheel Simulators
- Four Gas Shock Absorbers
- Four Air Bags
- Anti-Lock Braking System with Full Air Brakes
- Automatic Traction Control (ATC)
- Prewire for Supplemental Braking System
- Air Cleaner Restriction Indicator
- Fuel/Water Separator
- Remote Transmission Fill
- Fully Automatic Hydraulic Leveling System
- 10,000 Lb. Hitch Receiver with Dual Connector 4-Pin or 7-Pin

COCKPIT

- Fiberglass Automotive Dash with Roman Bronze Instrumentation Panel
- CD Player/Radio with Sirius-Ready Compatibility, Weather Band and Six Speakers
- Power Sunvisors
- Pilot and Co-Pilot Side Window Pull-Down Sunshades
- Rear Vision System with Audio and Adjustable Camera
- Intermittent Windshield Wipers
- 6-Quart Tank for Windshield Fluid
- Molded Co-Pilot Side Console with Two-Tier Cup Holder
- Molded Pilot Side Console with Two-Tier Cup Holder
- Leatherette Pilot and Co-Pilot Cockpit Recliner Seats
- Six-Way Power Pilot Seat
- Carpeted Driver and Passenger Floor Mats

OPTIONS

- Auxiliary Blower for Header Area of Front Windshield
- Six-Way Power Co-Pilot Seat
- 3-Camera Rear Vision System with Audio and Adjustable Center Camera
- Sirius Radio Satellite System (Requires Subscription)
- GPS Navigation System
- Interior Solar Privacy Screens
- Air Horns

APPLIANCES AND ACCESSORIES

- Large Double-Door Refrigerator with Ice Maker 8 Cu. Ft.
- High-Output 3-Burner Cooktop
- Removable Solid Surface Range Covers
- Spacesaver Convection Microwave
- 26" LCD Stereo Color TV with Remote Control in Cockpit Overhead
- 20" LCD TV in Bedroom
- Curbside: Exterior Hook-Ups for DSS Dish, Cable, 110V Outlet, with Hatch Door to Exterior
- Digital Satellite System Prep

OPTIONS

- Large Double-Door Refrigerator with Ice Maker 10 Cu. Ft. (N/A: 35SBD)
- Large Four-Door Refrigerator with Ice Maker (N/A with Pantry)
- High-Output Three-Burner Range with Oven
- Washer/Dryer Prep
- Combination Washer/Dryer
- Central Vacuum System
- 32" Flatscreen LCD TV in Front Cockpit Overhead
- Home Theater Surround Sound System with Sub-Woofer
- Bedroom DVD Player
- Semi-Automatic Digital Satellite Dish
- Exterior Entertainment Center, CD Player/Radio with Two Speakers

INTERIOR

- Raised Panel Cabinet Doors
- Black ABS Refrigerator Insert
- Heavy-Duty Ball Bearing Drawer Guides
- Solid Surface Kitchen Countertop and Backsplash with Under-Mounted Stainless Steel Sink with Two Sink Covers
- Kitchen Countertop Extension with Two Drawers Below
- Kitchen Countertop End Splash (37PDQ)
- Laminate Countertops with Solid Surface Edge Treatment- Bathroom, Dinette & Nightstands
- Kitchen Pantry next to Refrigerator with Full-Height Roll-Out Storage Cabinet (N/A with Four-Door Refrigerator Option) (N/A: 35SBD)
- Kitchen Pantry next to Refrigerator with Adjustable Shelves in Upper Cabinet and Three Drawers Below (N/A with Four-Door Refrigerator Option) (35SBD)
- Second Kitchen Pantry next to Refrigerator with Roll-Out Storage in Upper Cabinet and Three Drawers Below (37PDQ)
- Laminate Tile Flooring Kitchen, Bath and Entryway
- Carpeting with Pad in Living Area and Bedroom
- Engine Rug Cover (37PDQ, 39PBT)
- Crown Molding in Bedroom and Living Area
- Satin Nickel Cabinetry Hardware and Bath Accessories
- Oversized Rear Wardrobe Closet with Deluxe Mirror and Satin Nickel Door Frames (37PDQ, 39PBT)
- Blackout Day/Night Pleated Shades in Living Area and Bedroom
- Soil Repellant on Fabric

OPTIONS

- Decors: Copper Mine, Bentley and Key Largo
- Full-Width Laminated Tile Flooring Cockpit, Living Room Area and Kitchen
- Hardwood Raised Panel Doors on Refrigerator IPO Black ABS Refrigerator Insert
- Wood Choice: Newport Cherry, Champagne Select

FURNITURE

- Queen Bed with Overhead Cabinet and Nightstands
 - Arched Back Wood Booth Dinette, with Side-Sliding Dinette Tabletop
 - Forward-Facing Seatbelts in Booth Dinette inside Living Area Slide-Out (N/A: 37PDQ)
- Roadside:
- Fabric Easy Bed Sofa (N/A: 37PDQ)
 - Leatherette Swivel Rocker Barrel Chair (37PDQ)
- Curbside:
- Fabric Easy Bed Sofa (N/A: 39PBT)
 - Fabric Love Seat (39PBT)

OPTIONS

- Select Comfort Bed IPO Standard Mattress
 - Freestanding Dinette with Two Freestanding Chairs and Two Folding Chairs
- Roadside:
- Leatherette Euro-Recliner Chair with Ottoman IPO Leatherette Rocker Barrel Chair (37PDQ)
 - Fabric Hide-A-Bed Sofa with Air Mattress (N/A: 37PDQ)
 - Leatherette Hide-A-Bed Sofa with Air Mattress (N/A: 37PDQ)
 - Leatherette Ensemble Booth Dinette; Includes Leatherette Hide-A-Bed Sofa Selection with Air Mattress
- Curbside:
- One Leatherette Euro-Recliner Chair with Ottoman, and Wall-Mounted Table with Pullout Countertop IPO Sofa
 - One Leatherette Euro-Recliner Chair with Ottoman, and Desk Work Area IPO Love Seat (39PBT)
 - Leatherette Easy Bed Sofa IPO Fabric Easy Bed Sofa (N/A: 39PBT)
 - Leatherette Love Seat IPO Fabric Love Seat (39PBT)
 - Fabric Hide-A-Bed Sofa with Air Mattress (37PDQ)
 - Leatherette Hide-A-Bed Sofa with Air Mattress (37PDQ)

Specs continued on page 14



WE'RE HERE. ANYTIME, EVERY TIME.

- Reach us anytime — literally — via our live customer support line.
- Drive in to one of our 350 Service Centers.
- Enjoy the first year free when you enroll in our Owner Advantage Roadside Assistance Program.
- See where it all begins with a tour of one of our facilities in Indiana or Oregon. Call 1-800-650-7337 or 1-800-634-0855 to find out more.

SIMBA DIESEL 08 STANDARDS & OPTIONS

ELECTRICAL SYSTEMS AND LIGHTS

- 50 Amp 120V Distribution Panel and Power Cord
- Energy Management System
- 60 Amp Electronic 12V Power Converter
- Onan® 6.0 kW Diesel Generator
- Two 6V House Batteries
- Two 12V Heavy-Duty Chassis Batteries
- Battery Disconnect Switch at Front Door
- Exterior Power Entry Step with Light
- Interior Stepwell with Entry Step Lights
- Water Pump Switch in Service Bay Area and Convenience Center
- Lights in Outside Storage Compartments
- Underhood Utility Light
- Two Recessed Ceiling Map Lights above Cockpit Seats
- Hallway Convenience Center
- Obscure Lens Halogen Light under Kitchen and Living Room Hutch Overhead Cabinets
- Three Recessed Ceiling Lights above Countertop Work Area Kitchen
- One Recessed Ceiling Light above Refrigerator (37PDQ, 39PBT)
- Decorative Lighting Satin Nickel Living Room Wall Light, Dinette Overhead, and Cosmetic Vanity Light

OPTIONS

- 2,000-Watt Inverter with Two Additional Batteries (4 Total 6-Volt Batteries)
- Storage Compartment Tank Monitor Gauge
- Manual Retracting Power Cord Reel
- Onan® 8.0 kW Quiet Diesel Generator

PLUMBING AND LP SYSTEMS

- Kitchen Stainless Steel Under-Mounted Sink with Satin Nickel Faucet with Pullout Sprayer
- Central Water Filtration System
- Bath Lavatory Faucet Satin Nickel Finish
- Demand Water System and Water Pump
- 10-Gallon LP Gas/Electric Water Heater with Electronic Ignition, DSI
- Winterization Valving System
- Water Heater Bypass Valving
- China Toilet with Sprayer
- No-Fuss Flush Holding Tank Rinsing System
- Insulated Systems Compartment with Easy Access to Hook-Up
- Shower inside Wet Bay with Hot/Cold Water; Shower Head with Shut-Off
- Soap Dispenser inside Utility Bay
- Gravity and Pressurized Water Fill
- Contained Storage Area for Sewer Hose
- One-Piece Fiberglass Shower
- Shower Faucet, with Shower Hose and Head with Shut-Off
- Satin Nickel Shower Door Frame with Obscure Glass (35SBD)
- Rounded Satin Nickel Shower Door Frame with Decorative Glass (N/A: 35SBD)

OPTIONS

- RV Sani-Con 1 System, Holding Tank Flush System
- Neo-Angled Bathtub IPO Shower

HEATING, VENTS AND AIR CONDITIONING

- Dual 13.5M BTU Air Conditioners with Ducted Air and Wall Digital Thermostat
- Electronic Ignition Furnace (35M BTU 35SBD) (One 20M BTU and One 31M BTU 37PDQ, 39PBT) (One 40M BTU 38PBD)
- Kitchen Powered Attic Fan with Wall Control of Automatic Dome and Fan Power
- Bath Powered Attic Fan with Wall Control of Automatic Dome and Fan Power
- 12V Heater in Wet Bay, Heat Pad on Fresh Tank

OPTIONS

- Dual 13.5M BTU Air Conditioner with Heat Pumps and Digital Thermostat Control
- Ceiling Fan in Bedroom

WINDOWS, DOORS AND AWNINGS

- Radius Flush-Mounted Dual Pane Safety Glass Dark Tinted Slider Windows
- Exterior Entry Door Grab Handle
- Patio Awning
- Front Door Awning
- Topper Slide-Out Awnings Living Area and Bedroom
- Tinted Skylight in Bathroom with Protecta Glaze

OPTIONS

- Eclipse Automatic Patio Awning
- Sidewall Bedroom Window Awning with Metal Cover and Painted Hardware (N/A: 37PDQ)
- Window Awning Living Area Slide-Out House Windows with Metal Cover and Painted Hardware
- Window Awnings Bedroom Wardrobe Slide-Out House (N/A: 39PBT)

SAFETY

- Fire Extinguisher
- Deadbolt Lock on Entrance Door
- 120V GFI Protected Circuit Kitchen, Bath and Exterior
- LP Gas Detector
- Smoke Detector
- Carbon Monoxide Detector
- Driver and Passenger Three-Point Seatbelts
- Third Brake Safety Light
- Egress Window

SIMBA DIESEL 08 WEIGHTS & MEASUREMENTS

	35SBD	37PDQ	38PBD	39PBT
Weights * (Lbs.)				
Gross Vehicle Weight Rating	29,000	29,000	29,000	29,000
Gross Combined Weight Rating	39,000	39,000	39,000	39,000
Front Gross Axle Weight Rating	11,000	11,000	11,000	11,000
Rear Gross Axle Weight Rating	18,000	18,000	18,000	18,000
Measurements				
Wheelbase	204"	228"	240"	252"
Overall Length	35' 10"	37' 10"	38' 10"	39' 10"
Overall Height with A/C	12' 8"	12' 8"	12' 8"	12' 8"
Interior Height	84"	84"	84"	84"
Interior Width	94.5"	94.5"	94.5"	94.5"
Exterior Width	100.5"	100.5"	100.5"	100.5"
Tank Capacities ** (Gal.)				
Water Heater	10	10	10	10
Gray Tank	55	55	55	55
Black Tank	39	39	39	39
Fresh Tank	95	95	95	95
LP Tank ***	39	39	39	39
Fuel Tank	75	75	75	75

* Towing capacity is limited by GCWR; your vehicle's towing capacity is the difference between the GCWR and the actual vehicle weight, including all water, fuel, passengers and cargo. Your towed vehicle should be equipped with auxiliary brakes if the weight of the towed vehicle exceeds 1,000 lbs. Consult your owner's manual for further towing information.

** All tank capacities are estimated based upon calculations provided by the tank manufacturers and represent approximate capacities. The actual "usable capacity" may be greater or less than the estimated capacities based upon fabrication and installation of the tanks.

*** Actual filled LP capacity is 80% of listing due to safety shut-off required on tank.

The actual overall length of the recreational vehicle may differ from that indicated in the brochure due to variances in the manufacturing process and/or installed components. The actual length may be greater or less than that indicated. Due to the large variety of options and floorplan arrangements available to our customers, actual weights for each unit can differ significantly. Safari provides a weight sticker on each unit we produce which includes that unit's tank capacities and approximate weight. Consult your local Safari dealer for unit availability and further information. The information printed in this brochure reflects product design, fabrication, and component parts at the date of printing. The manufacturer reserves the right, at any time, to make changes in product design or material or component specifications as its sole option, without notice. This includes the substitution of components of a different brand or trade name which will result in comparable performance. All information printed in this brochure is subject to change after the date of printing. Some features shown or mentioned in this brochure are optional and may only be available in selected floorplans. Photographs may show props or decorations that are not standard equipment on Safari models. Safari, the Safari logo and its design, are registered trademarks. All other products and company names are trademarks and/or registered trademarks of their respective holders. While the color of the motorhome's exterior and the interior fabrics depicted in this sales brochure are fair and reasonable depictions, the colors depicted may not be an exact match of the actual colors because of the variances in photo-processing and variances caused by inserting the photographs within the sales brochure. Due to product improvements, changes during the model year and/or transcription errors that may occur, information represented within this brochure may not be accurate at the time of your purchase. If certain information is significant to your purchasing decision, please confirm the information with your dealer prior to submitting your order. Component part and appliance manufacturers issue limited warranties covering those portions of the recreational vehicle not covered by the Limited Warranties issued by Monaco Coach Corporation. To learn which specific component parts and appliances are excluded from the Limited Warranties issued by Monaco Coach Corporation, please contact your selling dealership or Monaco Coach Corporation directly, or review the warranty packet inside the recreational vehicle.



Our storage bay doors are hinged on the side, not the top, providing easier access to your belongings. You'll also appreciate the large pass-through storage compartments and one-piece polyethylene boxes for easy cleaning.

BEING DIFFERENT MAKES ALL THE DIFFERENCE.

At Monaco Coach Corporation, we always strive to be the best. And that means thinking outside the box. Giving you more of what you want in an RV. Like our exclusive Roadmaster chassis. PanaSuite™ full-wall slides. And programs like Monaco Financial Services and 24/7 roadside assistance. No other manufacturer can match Monaco's offerings. No one even comes close. Why not discover the difference for yourself? Visit www.monacodifferent.com.

Kay
KAY TOOLSON,
CEO



"No other manufacturer
can match Monaco's offerings.
No one even comes close."



www.safarimotorcoaches.com

91320 Coburg Industrial Way, Coburg, OR 97408

1.800.458.8735

WARRANTIES

12 MONTH/24,000 MILE
basic limited warranty

5 YEAR/50,000 MILE limited warranty
on aluminum or steel frame structure
of sidewall, roof, front and rear cap

3 YEAR/50,000 MILE limited warranty
on Roadmaster chassis

Applies to certain models.
See owner's manual for complete details.