

ASTORIA BY DAMON

2009



DAMON

ASTORIA

RIDICULOUSLY GOOD LOOKING MOTORHOMES



Night Watch paint

SURPRISINGLY GREAT VALUE
CLASS-A DIESEL

ASTORIA

RIDICULOUSLY AFFORDABLE

The best of all world's come together in an Astoria Class-A diesel motorhome by Damon. That's why Astoria's sales are soaring compared to other brands that either skimp on quality and user-friendly features, or charge a lot more for options that come at Astoria's standard lower price. It's time to see the light and look where real value starts - in Astoria.

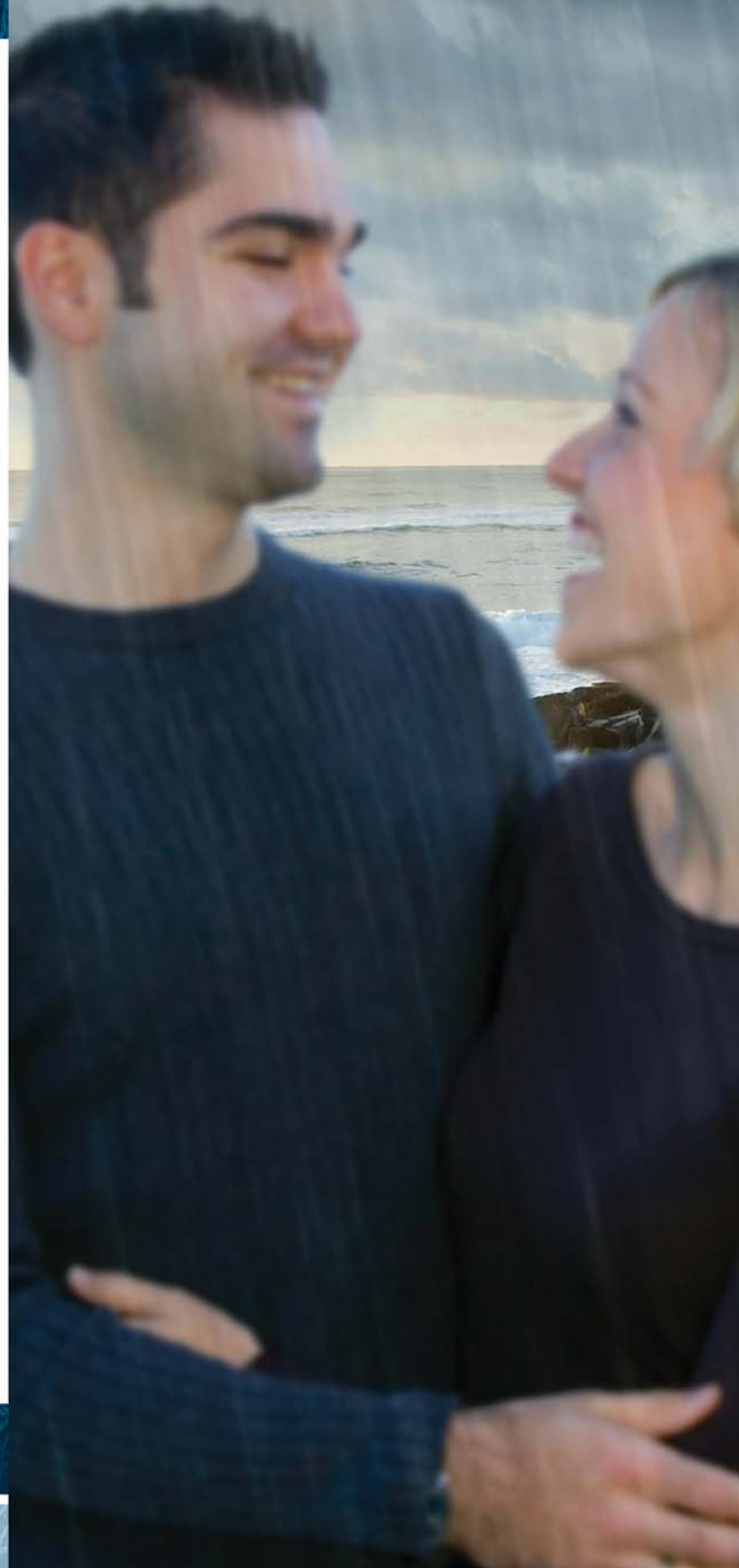


FULL BASEMENT PASS-THROUGH STORAGE

WE'RE DAMON

Don't be too surprised. Damon does have a reputation for delivering more for less. Consider our innovative floorplans, higher quality standards, long list of brand name appliances and components, and superior support-after-the-sale and you'll see why these are the most popular motorhomes on the road today.

A PLACE WHE



RE MORE FOR LESS REIGNS



Almond Cream paint



RIDICULOUSLY LIVABLE

Astoria is a true utopia of features and benefits that make Class-A travel great: Spread-out room thanks to a wide-body design. Comfort with two standard brand name air conditioners, an Onan generator, and a unique ducting system. Power provided



Quality, Corian solid surface countertops are standard features in an Astoria kitchen.



You'll find tile flooring at the entry door along with a step cover for passenger convenience. Great Damon detailing!

through a 340-hp Cummins diesel with Allison 6-speed auto transmission. And luxury with up to four standard LCD TV's up to 42" on select models, ceramic tile, and decor like high-end models. The real beauty is that Astoria is the most affordable Class-A diesel.



SOFA CONVERTS TO AIR BED



INTERIOR COLORS

Astoria offers three distinct interior colors and decor without additional cost.

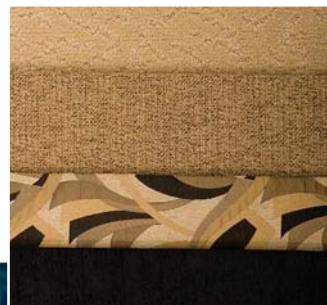
CARIBBEAN BRONZE



ROYAL CRUSH



TIGER'S EYE





TILE FLOORING, CABINETS WITH HIDDEN HINGES, AND 32" LCD COLOR TV HIGHLIGHT MODEL 3772 IN ROYAL CRUSH



SEATS ROTATE TO COMPLETE THE LIVING AREA AND A ONE-PIECE WINDSHIELD OFFERS A PANORAMIC VIEW



BEDS HAVE INNERSPRING MATTRESSES



GLAZED MAPLE (Optional)
Solid wood raised panel doors and drawer fronts.



CHERRY (Standard)
And hinges are hidden on interior cabinet doors.



POWER MIRRORS WITH HEAT



BUNK BEDS ON MODEL 3776



WELL-THOUGHT-OUT CONTROLS



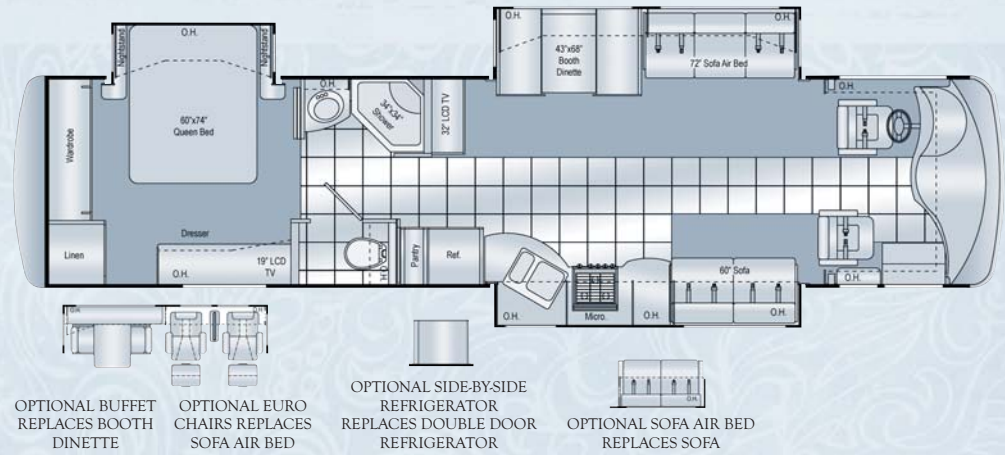
BRAND NAME LCD TV'S ARE STANDARD



LARGE REFRIGERATOR & PANTRY

3772 ASTORIA

CHASSIS	FREIGHTLINER
WHEELBASE	248
OVERALL LENGTH	38'10"
OVERALL WIDTH	101"
OVERALL HEIGHT WITH AC	12'7"
G.V.W.R.	28K
G.C.W.R.	33K
FRESH WATER	95.5 (GAL.)
WATER HEATER	10 (GAL.)
GREY/BLACK WATER	51 (GAL.)
LP (LBS)	126
SLEEPING CAPACITY	6
EXTERIOR STORAGE	185 (CU. FT.)
INTERIOR DRAWERS	17
INTERIOR DRAWER CAPACITY	19.5 (CU. FT.)
FUEL CAPACITY	100 (APPROX. GAL.)



RIDICULOUSLY WELL BUILT

You get more with Damon. Neoprene vibration dampening, all openings framed in aluminum, galvanized steel underbelly, heated holding tanks from furnace, and more. All built to higher specifications!

ROOF:

- 1) Padded ceiling
- 2) Lauan (wood)
- 3) Air cond. duct
- 4) Lauan (wood)
- 5) TPO roofing
- 6) Insulation
- 7) Aluminum frame

SIDEWALLS:

- 1) Interior panel
- 2) 1-1/2" block foam insulation
- 3) Lauan backer
- 4) Ext. fiberglass
- 5) Aluminum frame (tubing)

FLOOR:

- 1) Carpet
- 2) Padding
- 3) Structurwood flooring
- 4) Block foam
- 5) Galvanized metal
- 6) Steel frame



LONG HAUL CHASSIS

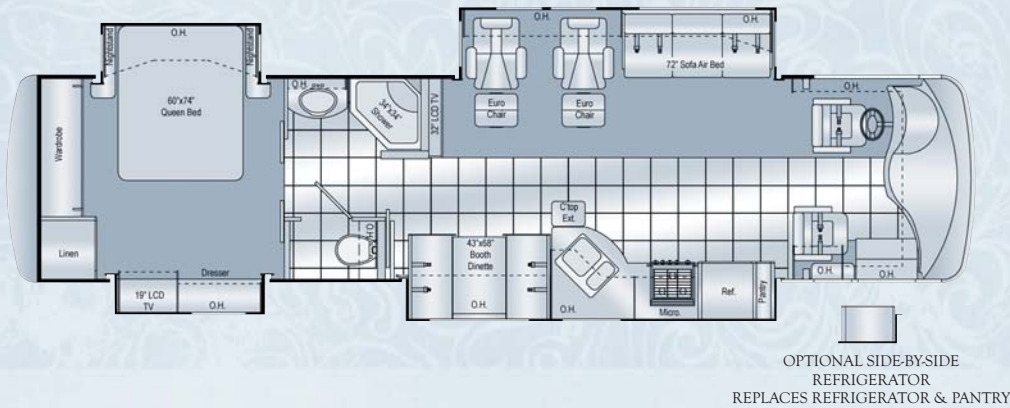
This Freightliner XC raised-rail chassis and 340 HP Cummins diesel is top-of-the-line. It provides 660 ft/lb of torque and 6-speed Allison transmission.





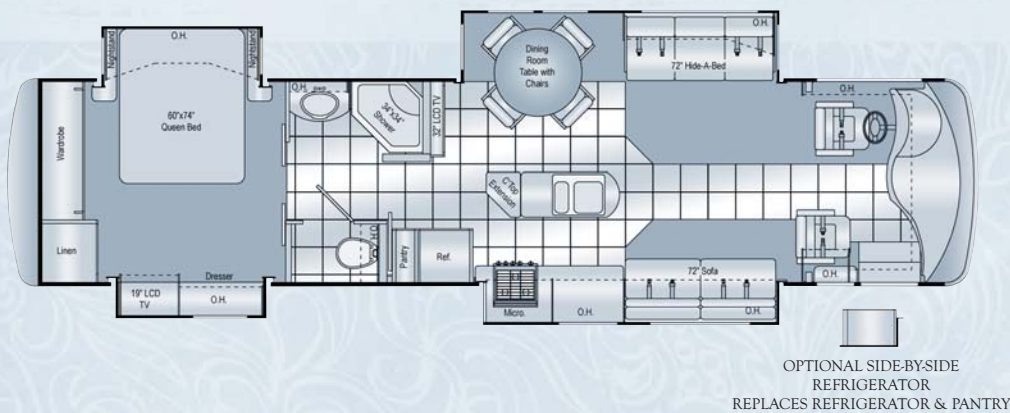
3776 ASTORIA

CHASSIS	FREIGHTLINER
WHEELBASE	248
OVERALL LENGTH	38'10"
OVERALL WIDTH	101"
OVERALL HEIGHT WITH AC	127"
GVWR	28K
GCWR	33K
FRESH WATER	95.5 (GAL.)
WATER HEATER	10 (GAL.)
GREY/BLACK WATER	51 (GAL.)
LP (LBS.)	126
SLEEPING CAPACITY	8
EXTERIOR STORAGE	185 (CU. FT.)
INTERIOR DRAWERS	17
INTERIOR DRAWER CAPACITY	13.1 (CU. FT.)
FUEL CAPACITY	100 (APPROX. GAL.)



3778 ASTORIA

CHASSIS	FREIGHTLINER
WHEELBASE	248
OVERALL LENGTH	38'10"
OVERALL WIDTH	101"
OVERALL HEIGHT WITH AC	127"
GVWR	28K
GCWR	33K
FRESH WATER	95.5 (GAL.)
WATER HEATER	10 (GAL.)
GREY/BLACK WATER	51 (GAL.)
LP (LBS.)	126
SLEEPING CAPACITY	4
EXTERIOR STORAGE	185 (CU. FT.)
INTERIOR DRAWERS	18
INTERIOR DRAWER CAPACITY	14.9 (CU. FT.)
FUEL CAPACITY	100 (APPROX. GAL.)



3786 ASTORIA

CHASSIS	FREIGHTLINER
WHEELBASE	248
OVERALL LENGTH	38'10"
OVERALL WIDTH	101"
OVERALL HEIGHT WITH AC	127"
GVWR	28K
GCWR	33K
FRESH WATER	95.5 (GAL.)
WATER HEATER	10 (GAL.)
GREY/BLACK WATER	51 (GAL.)
LP (LBS.)	126
SLEEPING CAPACITY	5
EXTERIOR STORAGE	185 (CU. FT.)
INTERIOR DRAWERS	17
INTERIOR DRAWER CAPACITY	14.9 (CU. FT.)
FUEL CAPACITY	100 (APPROX. GAL.)



NIGHT WATCH

Choose from any one of Astoria's three distinct paint packages. Quality paint, process and designs add value to your motorhome.



ALMOND CREAM

Full-body paint, which also includes color-coordinated slideroom awnings, is standard on all Astoria models.



EVENING AUBURN

Astoria models feature a wide-body design, front and rear fiberglass caps, full-basement pass-through storage.

**BLACK ICE
STANDARD
PAINT, NOT
SHOWN**

See website or your Astoria dealer for more details.

EXTERIOR

- Full body paint package including color coordinated slideroom awning(s)
- Fog lights
- Wide body design
- Radius corner domed TPO roof
- Rear ladder
- Front and rear fiberglass caps
- Side-mounted manual patio awning
- Side-mounted awning over slide out
- Upgraded gel coat wall
- Locking aluminum exterior storage doors
- Three side-hinged compartment doors (passenger side)
- Custom-designed front entry door with screen
- Black framed, radius corner dual-pane windows
- Two patio lights (one each side)
- Lighted storage compartments
- Full basement, pass-through storage
- Gas pistons on exterior storage doors
- Full width stainless steel guard with DAMON letters

CHASSIS

- Freightliner XC raised rail chassis
- 340-hp Cummins ISB
- In-block, 750 watt engine heater
- Leece Neville 170-amp, 12-volt alternator
- 6-speed Allison MH-2500 auto transmission
- Exhaust brake
- Full air brakes with auto slack adjusters front and rear
- Meritor anti-lock brakes
- Haldex Purest Air Plus heated air dryer
- Air-ride suspension
- Sachs shock absorbers, front and rear
- 22.5" radial tires
- Leveling jacks (hydraulic up and down)
- Stainless steel wheel liners
- Front and rear mud flaps
- Trailer hitch (5,000 lbs.)
- Emergency start circuit
- Under-hood light
- Layer of neoprene vibration dampener
- Dual fuel fills (100 gallon)

COCKPIT

- Molded ABS dash
- Electronically controlled dash air conditioning
- Premium AM/FM radio with in-dash CD player
- 4-speaker sound

STANDARD FEATURES & OPTIONS

- Electronic cruise control
- Padded steering wheel
- Tilt/telescoping steering column
- Map lights
- Dash fans
- Air horns
- Tinted one-piece windshield
- Manual windshield day/night privacy shade - full width
- Power mirrors with heat
- Nature's Alternative Leather reclining driver's seat with 6-way power
- 3-point, wall-mounted seat belts
- Side storage cabinets above driver & passenger
- Back-up monitor system with audio
- Drink holders
- Tile entry

LIVING AREA

- Décor fabric loveseat
- Décor fabric airbed (driver side slideout)
- 100% nylon carpeting with stain treatment and padding
- 32" LCD TV with full-function remote with antenna, booster and jack (3772, 3786)
- 42" LCD TV with full function remote, antenna, booster and jack (3776, 3778)
- Video package (DVD player and control center)
- Soft touch padded vinyl ceiling
- Fluorescent lighting in living area only
- Living room pin-up lights
- Aisle lights
- Day/night shades
- Windows in slide-out end walls

KITCHEN

- Refrigerator: large flush-mount, double-door w/raised panel hardwood front (maple or cherry)
- Cooktop

- Mirrored backsplash behind stove
- 1.1 cu ft. space saver microwave/convection oven
- Sink cover
- Single lever faucet with sprayer
- Kitchen faucet water filter
- Pantry
- Solid surface countertops
- Solid surface range cover
- Solid wood raised panel cabinet door fronts through-out (maple or cherry)
- Ceramic tile flooring
- Dream Dinette with wood edge table (N/A 3778, 3786)
- Freestanding dinette with 4 chairs (2 standard and 2 folding) (3786 only)
- Mini blind
- Wallpaper border
- Fantastic® power vent
- Booth Dinette (3778)

BEDROOM

- Innerspring mattress
- Bedspread with throw pillows
- Designer headboard
- Bunk beds (3776)
- 15" LCD color TV (bunk area) (3776 only)
- Lambrequin window treatments
- Night shades
- Mini blinds (always at bunk beds)
- Pin-up lights
- LCD color TV

BATHROOM

- Full height shower with door
- Skylight in shower
- Power vent
- Foot flush porcelain toilet with sprayer
- Wallpaper border
- Ceramic tile flooring

UTILITIES

- Air conditioners: 13,500 BTU ducted central front and rear
- Furnace: 34,000 BTU electronic ignition
- Water heater: 10-gallon gas/electric with electric ignition with XT Technology (equals 16 gallons)
- Water heater by-pass kit
- Generator: Onan 6.0 kW Quiet Diesel
- 80 AMP converter
- Four 6-volt auxiliary batteries on slide tray
- Battery disconnect
- 50-AMP, 120-volt service
- Exterior GFCI receptacle
- Enclosed heated potable and holding tanks
- Black tank flush
- 3-Way valve for tank/city water fill
- Telephone hookup
- Cable TV/satellite hookup
- Prepped for roof-mounted satellite dish
- Exterior shower
- Carbon monoxide, LP gas, and smoke detectors
- Monitor panel with LPG readout
- Entertainment Inverter: 1800 watt
- Washer/dryer prep

OPTIONS

- Nature's Alternative leather loveseat
- Nature's Alternative leather sofa/air bed
- Refrigerator: four door with icemaker
- Buffet with additional storage and four chairs (2 fixed and 2 folding) (N/A 3778, 3786)
- AM/FM stereo/CD player (bedroom)
- Generator: Onan 8.0 kW Quiet Diesel
- Heat pumps (2) with Low Profile A/C w/15,000 BTU
- Invisible Bra

PACIFIC PACKAGE

- Nature's Alternative reclining passenger seat with 6-way power
- Nature's Alternative leather sofa/air bed
- Electric windshield sunscreen
- Electric privacy shade
- Upgrade full-body paint package includes: color-coordinated slideroom awning(s)
- Color-Coordinated awning package includes: electric patio awning w/remote control & wind sensor also includes manual entry door awning
- Home theatre package with DVD/CD player and built-in digital tuner

YOUR LOCAL ASTORIA DEALER:



MORE DETAILS ONLINE Visit us online for more information about Damon products. Learn about each of Damon's Gas and Diesel Class-A models as well as the exciting new Avanti fuel-efficient clean diesel. Once online, you can take virtual tours, explore 360° viewable interiors, see additional features and find more for less, at: **ASTORIARV.COM**



P.O. BOX 2888 • ELKHART, IN 46515 • CUSTOMER SERVICE: 800-860-3812 • SALES DEPARTMENT: 800-860-5658 • DAMONRV.COM



Due to constant product improvements, the specifications, component parts and standard/optional equipment are subject to change without notice or obligation. Product photography or diagrams may show equipment that is optional. Damon Motor Coach reserves the right to make changes in prices and models and to discontinue models without notice or obligation. Components, parts or chassis may have been manufactured at times other than the model year indicated. All capacities are approximate and dimensions are nominal. All dry weights are based on standard model features and do not include optional features or equipment. Various RV components and features may differ to conform to local codes. Due to EPA environmental restrictions, engine power and torque ratings may change mid-year.