

Four Winds

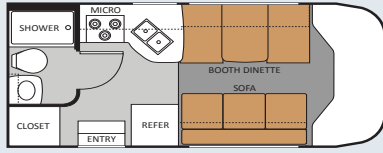
SIESTA

2011

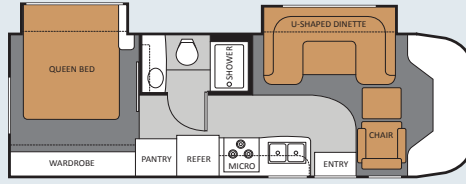
FLOOR PLANS

B+ CLASS MOTORHOMES

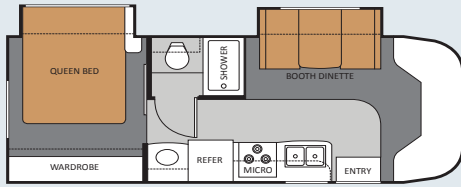
SIESTA STANDARD B+



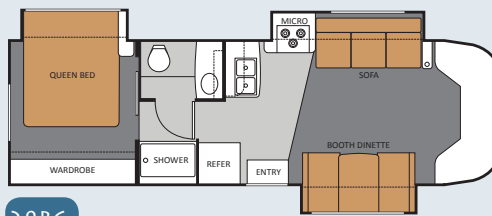
21BC



28BK

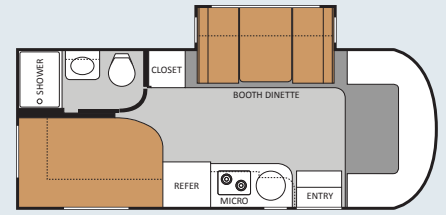


26BE

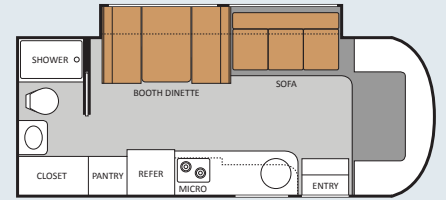


29BG

SIESTA SPRINTER



24SA



24SB

SPECIFICATIONS

	Standard B+ models				Sprinter B+ models	
	21BC	26BE	28BK	29BG	24SA	24SB
Model						
Ford Chassis - Triton Engine	5.4L/V-8	6.8L/V-10	6.8L/V-10	6.8L/V-10	N/A	N/A
Gross Vehicle (GVWR)	11,500	14,500	14,500	14,500	N/A	N/A
Gross Combined (GCWR)	13,000	20,000	20,000	20,000	N/A	N/A
Chevy Chassis - Vortec Engine	6.0L/V-8	6.0L/V-8	6.0L/V-8	6.0L/V-8	N/A	N/A
Gross Vehicle (GVWR)	12,300	14,200	14,200	14,200	N/A	N/A
Gross Combined (GCWR)	16,000	17,600	17,600	17,600	N/A	N/A
Sprinter Chassis - Turbo Diesel Engine	N/A	N/A	N/A	N/A	3.0L/V-6	3.0L/V-6
Gross Vehicle (GVWR)	N/A	N/A	N/A	N/A	11,030	11,030
Gross Combined (GCWR)	N/A	N/A	N/A	N/A	15,250	15,250
MEASUREMENTS						
Wheel Base (Ford/Chevy)	138"/139"	181"/182"	210"/211"	220"/221"	170"	170"
Exterior Length (w/out ladder) (Ford/Chevy)	22'8"/23'7"	27'4"/28'3"	29'5"/29'11"	30'11"/31'10"	24'6"	24'10"
Exterior Height (w/ AC)	10'7"	10'7"	10'7"	10'7"	10'10"	10'10"
Exterior Width (without mirrors)	94"	94"	94"	94"	90"	90"
Interior Height	80"	80"	80"	80"	80"	80"
Awning Size	11'6"	18'	18'	20'	14'6"	14'6"
CAPACITIES						
Fuel (gallons) (Ford/Chevy)	37/35	55/57	55/57	55/57	26.4	26.4
LPG (pounds)	40.9	40.9	40.9	40.9	68.2	68.2
Fresh Water (gallons)	39	33	33	33	40	42
Waste Water (gallons)	26	25	25	25	38	34
Gray Water (gallons)	26	33	32	23	34	38
Water Heater (gallons)	6	6	6	6	6	6
Furnace (BTUs)	25,000	25,000	25,000	25,000	25,000	25,000
Exterior Storage Capacity (cubic feet) (Ford/Chevy)	4/4	16/12	17/17	24/24	56	40

2011 FOUR WINDS SIESTA & SPRINTER STANDARD & OPTIONAL FEATURES

BODY CONSTRUCTION/EXTERIOR		B+	SP	INTERIOR		B+	SP	ELECTRICAL & PLUMBING		B+	SP	
Fully welded tubular steel floor system	S	N/A	Back-up monitor	S	S	Stainless steel power range hood	S	S	Smoke, LPG, carbon monoxide detectors	S	S	
Fully welded tubular aluminum floor	N/A	S	80" interior ceiling height	S	S	Stainless steel convection microwave	S	S	Fire extinguisher	S	S	
Curved sidewall design	S	N/A	Electric Euro-skylight	N/A	S	Non-stainless steel convection oven (Canadian units only)	S	N/A	Slide-out battery tray	S	N/A	
Fully welded tubular aluminum roof and sidewall cage construction	S	S	Residential linoleum (galley, bath and entry way)	S	S	Laminate countertops	S	S	Keyless entry for cab doors	N/A	S	
Vacu-Bond laminated roof, walls and floors with high-density block foam insulation	S	S	Metal entry grab handle	S	S	Solid surface countertop with sink covers	O	O	Convenience package: keyless entry and valve stem extenders	O	N/A	
Slick fiberglass exterior sidewalls	S	S	Windshield privacy curtain	S	S	Flip-up countertop extension (N/A 21BC)	S	N/A	ELECTRICAL & PLUMBING			
Exterior graphics package	S	S	Cab-over bed ladder	N/A	S	Large stainless steel single bowl sink with goose neck faucet	N/A	S	Onan® RV MicroQuiet™ 4.0 (4000 watts) gas generator	O	N/A	
Exterior graphics/partial paint packages	O	O	13,500 BTU low-profile A/C in front	S	S	Large double bowl sink	S	N/A	Onan® 3.6 (3600 watts) LP generator	N/A	S	
Full-body paint package with Gel-coat sidewalls	O	O	15,000 BTU low-profile A/C in front	O	N/A	Pantry (24SB & 28BK only)	S	S	Onan® RV QD 3200 (3200 watts) diesel generator	N/A	O	
Premium one-piece TPO roof	S	S	Ceiling ducted A/C system	S	S	Full extension drawer guides	S	S	Power Package: includes Automatic shoreline-to-generator transfer switch, Second auxiliary house battery, 6-gallon gas/electric water heater & Automatic electric entrance step			
Crown roof	S	S	Fluorescent ceiling lighting	S	S	ENTERTAINMENT & ACCESSORIES		B+	SP	30-amp service with shore line power cord	S	S
One-piece fiberglass front and rear caps	S	S	Directional reading lights	S	S	Front entertainment center with 32" LCD TV in cab-over	S	N/A	Automatic shoreline-to-generator transfer switch	PP	S	
Manual patio awning	S	S	Cinnamon maple cabinetry	S	S	19" LCD TV over the door and coach stereo system with AM/FM tuner and DVD player	N/A	S	Battery disconnect switch	S	S	
Roof ladder	S	S	Cherry cabinetry	O	O	Front entertainment center with 26" LCD TV in cab-over	N/A	O	Emergency start switch	S	N/A	
Seamless roto-cast storage compartments	S	S	European style curved cabinetry with hidden hinges	S	S	Portable 19" LCD TV in bedroom - can be removed and mounted to exterior hook-ups (N/A 21BC & 24SB)	O	O	Auxiliary house battery	PP	S	
Flush mount radius luggage doors	S	N/A	Hardware with brushed nickel finish	S	S	Home theater system with DVD player and radio tuner	O	N/A	Second auxiliary house battery	O	O	
Side hinged slab luggage doors	N/A	S	Night shades throughout	S	S	Outside entertainment center includes 26" LCD TV with AM/FM stereo, CD/DVD player with iPod ready jack and speakers (N/A 21BC & 24SA)	O	O	6-gallon gas water heater	S	N/A	
Slide-out room awning	S	S	Soft touch vinyl ceiling	S	S	TV antenna and booster	S	S	6-gallon gas/electric water heater	PP	S	
Automatic electric entrance step	PP	S	Booth dinette (N/A 28BK)	S	S	Cable TV prep	S	S	Black tank flush system	S	N/A	
Clear acrylic, entry grab handle	S	S	Leatherette Euro-recliner with ottoman (Std. 28BK)	O	N/A	HD/DSS satellite prep	S	S	Water heater bypass system	S	S	
Outside Shower	O	S	Fabric jackknife sofa (21BC only)	S	N/A	BEDROOM/BATHROOM		B+	SP	Holding tanks with heat pads	O	O
AUTOMOTIVE/COCKPIT		B+	SP	Leatherette U-shape dinette IPO booth dinette (24SA & 28BK only)	S	O	Queen-size innerspring mattress (N/A 21BC & 24SB)	S	S	Black tank flush system	S	N/A
AM/FM dash radio with large buttons, CD player and weather band tuner; iPod and Sirius® satellite ready	S	S	Fabric/Leatherette U-shape dinette IPO booth dinette (24SA only)	S	O	Bedsread and pillow shams (N/A 21BC & 24SB)	S	S	Water heater bypass system	S	S	
Power window and door locks	S	S	Leatherette hide-a-bed sofa with air mattress (Std. 24SB & 29BG)	S	S	Power bath vent	S	S	Holding tanks with heat pads	O	O	
3-Point driver and passenger seat belts	S	S	Leatherette hide-a-bed sofa with air mattress and pedestal table IPO booth dinette (24SA & 26BE only)	O	O	China bowl toilet	S	S	STANDARD/OPTION KEY			
Driver and passenger air bags	S	S	Fantastic fan	O	O	Skylight in shower	S	S	B+	21BC, 26BE, 28BK & 29BG		
Fiberglass running boards	S	S	GALLEY		B+	SP	Shower with glass door	S	S	SP	24SA & 24SB	
Stainless steel wheel liners	S	S	Double door refrigerator with stainless steel door inserts	S	S	SAFETY/CONVENIENCE		B+	SP	S	Standard	
Heated, remote exterior mirrors	S	S	3-burner high-output cooktop with cover	S	N/A	Entry door with deadbolt lock	S	S	O	Optional		
Spare tire kit	O	S	European 2-burner high-output gas range top with glass cover	N/A	S	Telephone jack	S	S	N/A	Not Available		
3,500-lb. trailer hitch	N/A	S				System control center	S	S	PP	Power Package		
5,000-lb. trailer hitch	S	N/A										
Leatherette driver and passenger captain's chairs	S	S										

VEHICLE LOADING: Every effort has been made to provide the greatest number of options for the recreation vehicle owner. Along with these choices comes the responsibility to manage the loads that are imposed by the choices so that they remain within the manufacturer's specified chassis weight limits. Do not overload the recreation vehicle.

IMPORTANT: Towing capacity may vary by chassis model, floorplan, options and loading of the vehicle. This may result in a towing capacity which is less than the maximum capacity of the hitch. Do not exceed the vehicle's Gross Combined Weight Rating (GCWR), or the hitch rating. A separate functioning

brake system is required for any towed vehicle or trailer weighing more than 1,000 lbs. (450 KG) when fully loaded. Liquid capacities and weights are approximations only.

WARNING: This information is intended as a guide only. Weights of individual vehicles may vary. Consult your owner's manual and weight sticker affixed to each vehicle for complete loading, weighing, and towing instructions.

WARRANTY: The vehicles are provided with a twelve (12) month, 15,000-mile limited warranty. Chassis, component part and appliance manufacturers may issue limited warranties covering those portions of

the vehicle not covered by the limited warranties issued by Four Winds International. To learn what portions of the vehicle are excluded from coverage under the limited warranties issued by Four Winds International, please contact your selling dealership or Four Winds International directly, or review the warranty packet inside the vehicle.

Product information, specifications, and photography in this brochure were as accurate as possible at time of printing. Photographs may contain some features that are optional on your vehicle. Since we continually strive to improve our products, actual products may differ. The manufacturer reserves the

right, at any time, to make changes in product design, materials, component specifications and pricing, without notice. All capacities are approximate and dimensions are nominal. Some features or options may be different or unavailable in Canada.

