

AMERICAN REVOLUTION®



SILVER MERLOT



CHAMPAGNE BERRY



MIDNIGHT SUEDE



GOLD STARFIRE



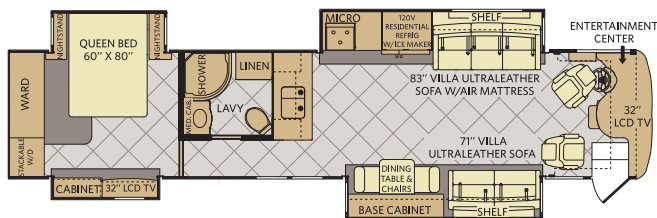
WHITE SHADOW

TOP FEATURES

- Quiet Air Conditioning System
- Dual Dash Monitors
- Sony® Blu-ray® Surround Sound System
- Powered Front Privacy Blinds
- Power Generator Slide
- Villa® Ultraleather Furniture
- Frameless Windows
- Slide-out Mounted Girard Awning
- Aqua-Hot® Heating System
- Residential Refrigerator

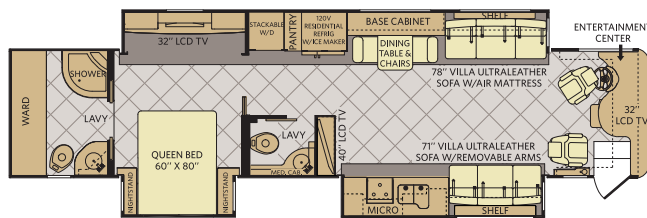
LUXURIOUS GRAPHITE	GOLDEN SUEDE	FADED LINEN		CABINETRY
			MAHOGANY STAIN W/EBONY GLAZE	
			REGENCY CHERRY W/EBONY STAIN	
			ALMOND MOCHA GLAZE	

42Q



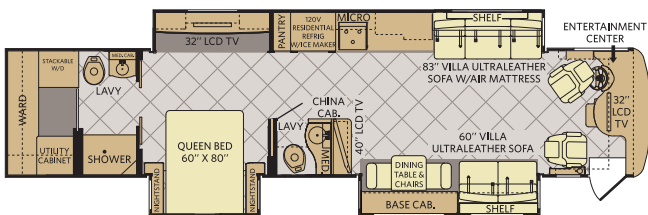
Available options: 107, 115, 124, 126, 127, 129, 191, 205, 828, 853, 854, 855, 856

42W



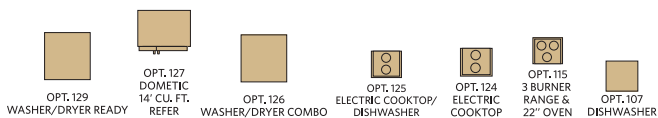
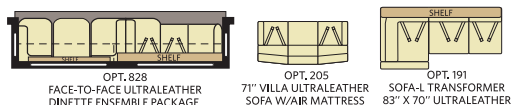
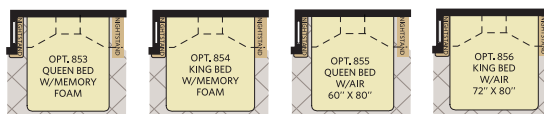
Available options: 107, 115, 124, 125, 126, 127, 129, 205, 828, 853, 854, 855, 856

42T



Available options: 107, 115, 124, 125, 126, 127, 129, 828, 853, 854, 855, 856

Options



WEIGHTS & MEASUREMENTS

CHASSIS	LIBERTY®		
MODELS	42Q	42T	42W
Engine Displacement (liters)	8.9	8.9	8.9
Wheelbase (inches)	302"	302"	302"
GVWR (lbs) ¹	44,600	44,600	44,600
Front GAWR (lbs) ²	14,600	14,600	14,600
Rear GAWR (lbs) ²	20,000	20,000	20,000
Tag Axle (lbs) ²	10,000	10,000	10,000
GCWR (lbs) ³	59,600	59,600	59,600
Hitch Rating Weight (lbs) [†]	15,000	15,000	15,000
Tongue Weight (lbs) [†]	1,500	1,500	1,500
Fuel Capacity (gal)	150	150	150

LIBERTY CHASSIS

Model: Spartan®
Engine: Cummins® 8.9L ISL w/2-Stage Engine Brake
Transmission: Allison® 3000 MH, 6-Speed
 w/Electronic Shifter

Alternator: 170 Amp Leece-Neville
Horsepower: 450HP
Torque: 1,250 lb-ft @ 1,300 RPM
Front Tires: Michelin® 305/70R 22.5H
Rear Tires: Michelin® 295/80R 22.5H

DIMENSIONS & CAPACITIES

MODELS	42Q	42T	42W
Overall Length ⁴	42' 11.5"	42' 11.5"	42' 11.5"
Overall Height (with A/C)	12' 11.75"	12' 11.75"	12' 11.75"
Overall Width (maximum) ^{5,6}	102"	102"	102"
Interior Height (maximum)	84"	84"	84"
Interior Width (maximum)	96"	96"	96"
Fresh Water Holding Tank (gal)	100	100	100
Grey Water Holding Tank (gal)	60	60	60
Black Water Holding Tank (gal)	40	40	40
Appliance Propane Tank (gal) (WC) ⁷	28.2	28.2	28.2

Liquid Weight Reference:

Water (gal) = (8.3 lbs/3.8 kgs) Fuel (gal) = (6.1 lbs/2.8 kgs) Propane (gal) = (4.2 lbs/1.9 kgs)

Metric Conversion:

Multiply pounds x 0.453 to obtain kilograms. Multiply gallons x 3.785 to obtain liters.
 Multiply liters x 61 to obtain cubic inches.

- GVWR (Gross Vehicle Weight Rating) is the maximum permissible weight of this fully loaded motor home. The GVWR is equal to or greater than the sum of the (UVW) unloaded vehicle weight plus the (OCCC) occupant cargo-carrying capacity.*
 - GAWR (Gross Axle Weight Rating) is the maximum permissible loaded weight a specific axle is designed to carry.
 - GCWR (Gross Combined Weight Rating) is the value specified by the motor home manufacturer as the maximum allowable loaded weight of this motor home with its towed vehicle. Towing and braking capacities may be different. Refer to Fleetwood and chassis manufacturer's manuals for complete information.
 - Length measured from front bumper to rear bumper (excludes accessories).
 - Excludes safety equipment and awnings.
 - Motor homes feature a body width over 96" which will restrict your access to certain roads. Before purchasing, you should research any state and/or province road laws which may affect your usage.
 - Tank manufacturer's listed water capacity (WC). Actual propane capacity is 80% of water listing as required by the safety code.
- † The chassis manufacturer recommends the installation of a supplemental brake control system to activate the brakes on the vehicle or trailer you are towing. Hitch receiver ratings expressed are maximum for the hitch receiver installed and may require the purchase of additional equipment that is dependent on the weight of the towed load. Consult with hitch receiver manufacturer for further information.

* UVW and OCCC are found on the label containing the federal certification tag in each RV.

WHY AMERICAN COACH RV?



Quality

There's no cutting corners. Skilled craftsmen build every Fleetwood RV for maximum durability and longevity.



Trust

More people trust Fleetwood RV. After all, we've spent the last 60 years perfecting RVs, earning the loyalty of generations of RVers.



Passion

We're truly passionate about the RV lifestyle. Fleetwood RV was founded by RV enthusiasts, and that tradition continues today.



Safety

You've got precious cargo. So we've engineered dozens of innovative safety features into our motor homes to give you more peace of mind.



Service

Help is nearby with 24/7 emergency roadside assistance through Coach-Net®.* And when you need an upgrade or repair, you'll find Fleetwood RV dealers all across North America ready to assist you.



Warranty

Exclusive RV ownercare warranty. See your Fleetwood RV dealer for details.

RV OWNERCARE*

Limited one-year/15,000-mile coach warranty and three-year/45,000-mile structural warranty, whichever occurs first, and it is fully transferable for the first 12 months. RV OWNERCARE is one of the RV industry's most comprehensive programs and includes systems, appliances, components and construction, with no deductible and no service charge. RV OWNERCARE coverage is provided from a company that will be around in the future to service your needs. See your nearest American Coach dealer for a full explanation of benefits and restrictions.

CONTACT US

To locate a dealer near you, visit our website at www.americancoach.com or call 1-800-322-8216. We can also be contacted at American Coach Customer Relations, P.O. Box 1007, Decatur, IN 46733.

AMERICAN COACH MOTOR HOME CLUBS

As an American Coach owner, you're invited to become a member of several American Coach motor home clubs. Becoming a club member is the perfect way to meet other American Coach owners who love to travel across America and share in the RV lifestyle. Visit our website at www.americancoach.com/owners_clubs to learn more and join the fun.

IMPORTANT—PLEASE READ: Product information, photography and illustrations included in this publication were as accurate as possible at the time of printing. For further product information and changes, please visit our website at www.americancoach.com or contact your local American Coach dealer. Prices, materials, design and specifications are subject to change without notice. All weights, fuel, liquid capacities and dimensions are approximate. American Coach has designed its recreational vehicles to provide a variety of uses for customers. Each vehicle features optimal seating, sleeping, storage and fluid capacities. The user is responsible for selecting the proper combination of loads (i.e. occupants, equipment, fluids, cargo, etc.) to ensure that the vehicle's capacities are not exceeded.



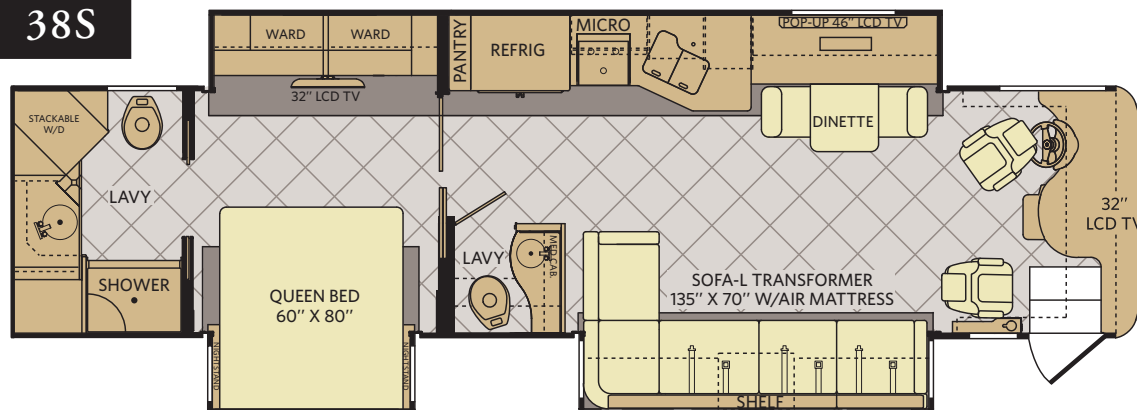
*All 2012 Fleetwood RV motor homes include a 1-year membership to Coach-Net.

©2011 Fleetwood RV Inc. Printed in USA. Inventory Control Number REV12F1, 08/11. Model Year 2012, First Edition.

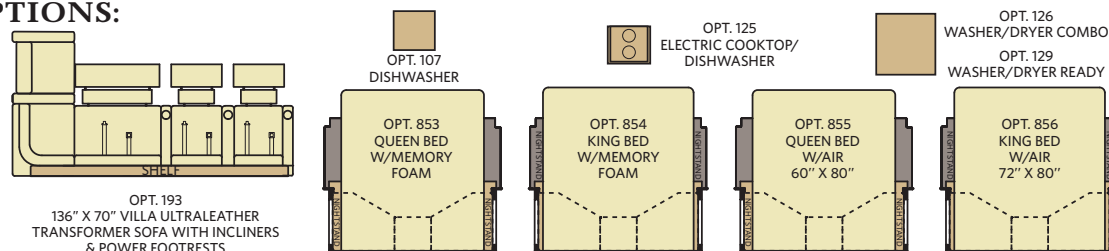
AMERICAN REVOLUTION®



38S



OPTIONS:



FLOOR PLAN FEATURES:

- Quiet Air Conditioning System
- Dual Dash Monitors
- Sony® Blu-ray® Surround Sound System
- All Electric/No LP
- Powered Front Privacy Blinds
- Power Generator Slide
- Villa® Ultraleather Furniture
- Frameless Windows
- 46\"/>

WEIGHTS & MEASUREMENTS

CHASSIS	LIBERTY® 400
MODELS	38S
Engine Displacement (liters)	8.9
Wheelbase (inches)	254"
GVWR (lbs) ¹	34,700
Front GAWR (lbs) ²	14,700
Rear GAWR (lbs) ²	20,000
GCWR (lbs) ³	44,700
Hitch Rating Weight (lbs) [†]	7,500
Fuel Capacity (gal)	100

LIBERTY CHASSIS

Engine: Cummins® 8.9L ISL VGT Engine Brake	Alternator: 170 Amp Leece-Neville
Transmission: Allison® 3000 MH, 6-Speed w/Electronic Shifter	Horsepower: 400HP
	Torque: 1,250 lb-ft @ 1,300 RPM
	Front Tires: Michelin® 305/70R 22.5H
	Rear Tires: Michelin® 295/80R 22.5H

DIMENSIONS & CAPACITIES

MODELS	38S
Overall Length ⁴	38' 11.5"
Overall Height (with A/C)	12' 11.75"
Overall Width (maximum) ^{5,6}	102"
Interior Height (maximum)	84"
Interior Width (maximum)	96"
Fresh Water Holding Tank (gal)	100
Grey Water Holding Tank (gal)	60
Black Water Holding Tank (gal)	40



Addendums

- GVWR (Gross Vehicle Weight Rating) is the maximum permissible weight of this fully loaded motor home. The GVWR is equal to or greater than the sum of the (UVW) unloaded vehicle weight plus the (OCCC) occupant cargo-carrying capacity.
- GAWR (Gross Axle Weight Rating) is the maximum permissible loaded weight a specific axle is designed to carry.
- GCWR (Gross Combined Weight Rating) is the value specified by the motor home manufacturer as the maximum allowable loaded weight of this motor home with its towed vehicle. Towing and braking capacities may be different. Refer to Fleetwood and chassis manufacturer's manuals for complete information.
- Length measured from front bumper to rear bumper (excludes accessories).
- Excludes safety equipment and awnings.

- Motor homes feature a body width over 96" which will restrict your access to certain roads. Before purchasing, you should research any state and/or province road laws which may affect your usage.
- Tank manufacturer's listed water capacity (WC). Actual propane capacity is 80% of water listing as required by the safety code.

[†] The chassis manufacturer recommends the installation of a supplemental brake control system to activate the brakes on the vehicle or trailer you are towing. Hitch receiver ratings expressed are maximum for the hitch receiver installed and may require the purchase of additional equipment that is dependent on the weight of the towed load. Consult with hitch receiver manufacturer for further information.

* UVW and OCCC are found on the label containing the federal certification tag in each RV.