

2012 CAMEO

THE WORLD'S FINEST FIFTH WHEELS



THE **SHAPE** OF A LEADER.

*Carriage* RESORT VEHICLES

***This Brochure Provided By...***

**motor  
sportsland**



***Let Us  
Help YOU  
Get Away!***

***4001 S. State St. 801.713.0689  
Salt Lake City, UT 84107 888.758.0364***

***www.motorsportsland.com***





FEATURED THROUGHOUT IS THE CAMEO 37RSQ FLOORPLAN IN DUNE DÉCOR.

**CAMEO**  
By Carriage



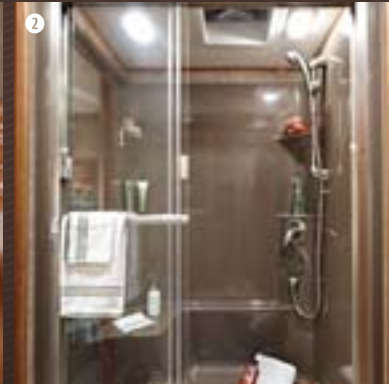
## TRUE CRAFTSMANSHIP IS IN THE DETAILS.

Welcome to a bold step up in the world of luxury fifth wheels. The 2012 Cameo makes a big impression inside and out, with its all-new aerodynamic front cap, top quality construction and detailed in-house craftsmanship you won't find anywhere else. At your first peek inside, you'll be amazed at the style and comfort that greets you. It all starts in the living area with the new resort design furniture package featuring top-of-the-line Williamsburg furniture. We invite you to take a closer look at just a few of the details that set the 2012 Cameo apart.

❶ Newly designed slideout fascia with decorative inserts offers the true finished look of a home. ❷ The 37RSQ floorplan is setting a new standard for luxury with its all-new resort shower. ❸ The Cameo's newly designed window treatments feature plush valances with hardwood accents.



FULL BODY PAINT





## Living area



## A WARM WELCOME HOME.

Every thoughtful feature of the 2012 Cameo is designed to create a more welcoming living space. This year, entertainment takes a big step up with a new 40-inch LCD TV and a home theater sound system. And an optional fireplace, available on select floorplans, makes a great finishing touch.

❶ Enjoy a whole new dining experience, thanks to new larger windows and new plush dinette chairs. Add the leaf and use two additional folding chairs to entertain family or friends. ❷ The 2012 Cameo offers a wide range of floorplans to choose from, each designed to maximize its spacious comfort. ❸ No matter where you are, you can set the perfect mood with new, brighter halogen three-zone lighting with dimmers for precise adjustment.



SIMPLY DELICIOUS.

Whether you're entertaining family and friends, or preparing a romantic dinner for two, the Cameo kitchen lets you do it in style. The beautiful Corian countertops are customized in-house to maximize your workspace and provide the very best fit and finish, and this year they feature a new profile edge. A new decorative backsplash completes the décor. ❶ Unlike many RVs, Cameo features a true pantry with plenty of space for all your essentials. ❷ The 37RSQ floorplan offers the convenience of a large L-shaped work area. An optional kitchen island is available on select floorplans. ❸ Here's a wonderful space-saving detail — built-in storage for the flush-mount range cover.



❶



❷



❸



**CAMEO**  
By Carriage







## RESORT LIVING AT ITS FINEST.

Welcome to private quarters that are dedicated to pampering you with stylish comfort. The bedroom features large wardrobe, dresser and cabinet storage space and your choice of a queen or optional king bed. ❶ An optional powerful Dyson hand-held vacuum cleaner is stowed conveniently in the wardrobe closet. ❷ This year, Cameo sets a new standard for luxury with the enormous, 48" x 32", one-piece fiberglass resort shower, available on the 37RSQ floorplan. ❸ It's the perfect complement to the spacious spa area with its customized Corian countertop and new upgraded faucets.





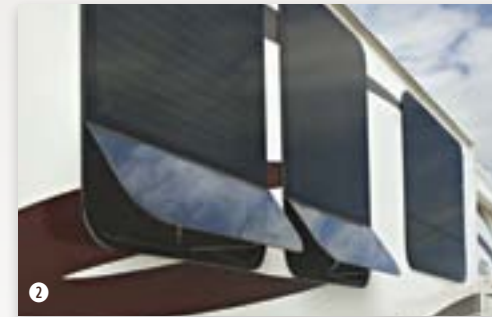
DESIGNED FOR GREAT EXPERIENCES.

The 2012 Cameo makes a big impression with the all-new aerodynamic front cap — and along with sleek new graphics and new optional full-body paint, it reflects just how contemporary and sophisticated the Cameo truly is. A great Resort Vehicle means providing everything you need to enjoy life outside the coach — whether it's spending time with family and friends or simply enjoying the view. That's why Cameo offers a wide range of thoughtful exterior features, starting with the outstanding convenience of a Carefree® Electric Awning.

❶ The Control Center makes hook-ups a breeze with a central access point for pump switches, telephone, cable/satellite, city water, black tank flush and sensor, 15' hot/cold sprayer, and more. ❷ Developed by Hehr,® our exterior windows are frameless, tinted, and can be opened in the rain. ❸ For 2012 the Cameo features a 1-piece large rear window versus 3 smaller individual windows.



❶ CONTROL CENTER



❷ FRAMELESS WINDOWS







**REAR STORAGE**

Carriage offers an industry-leading 181 cubic feet of storage space with three large outside compartments, featuring felt lining and easy clean flooring. The main basement pass-through storage now includes standard slam latch baggage doors, while Carriage's dual floor construction allows for a unique rear storage and lighted front storage you won't find on most other fifth wheels.



**BASEMENT PASS-THROUGH STORAGE**



**FRONT STORAGE**



*Leveling system*



**INDUSTRY-LEADING INNOVATION.**

It takes superior chassis design and construction to offer a seamless one-touch leveling solution – and the fastest setup at the RV resort. That's why Carriage is proud to be the only fifth wheel manufacturer to offer the Bigfoot Auto-leveling System. In addition to the deluxe touch pad with single button auto leveling, this year Bigfoot offers even easier controls thanks to a new wireless key fob.



**ADDITIONAL BIGFOOT FEATURES:**

- 4 independent cylinders, each with pump and reservoir and lifetime warranty
- Large 10" x 10" foot pads guard against sinking
- 29 tons of total power to handle uneven sites
- 24/7 technical support.



## THE RIGHT CHOICE FOR YEAR-ROUND COMFORT.

Carriage fifth wheels lead the industry in quality construction that's designed for full-time living.

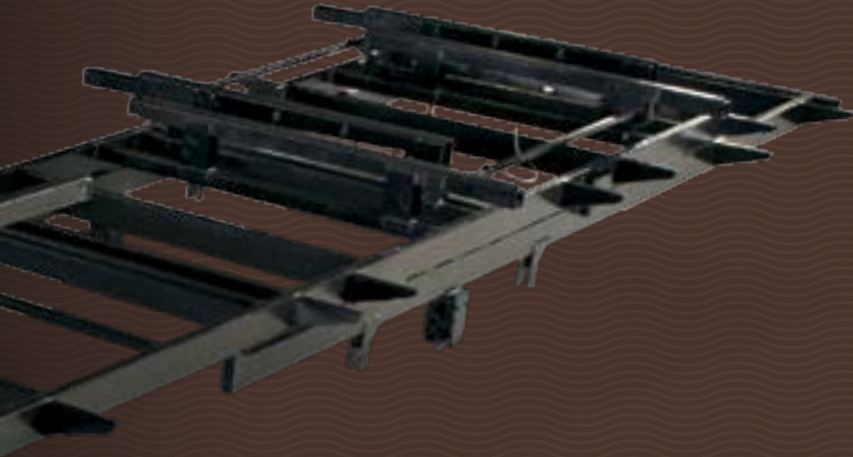
- 1 It all starts with our exclusive square platform chassis engineered, constructed and welded in our own plant for better quality control.
- 2 2" x 6" double stacked box tube steel eliminates frame sag and offers greater strength versus typical a 10" or 12" I-Beam frame of the competition.
- 3 State-of-the-art running gear offers 30% improvement in dampening road shock and adds vertical travel to match truck height. Mor-Ryde® Rubber Equalizer running gear and Mor-Ryde® pinbox comes standard.
- 4 Industry-leading slideout construction features gear-driven, rack and pinion mechanism, fully insulated slideout rooms, roofs, walls and floors, h-seal "squeegee" enclosure wipes elements from the walls and roof.
- 5 Many manufacturers cut into the frame for the slide mechanism, which weakens the chassis. At Carriage, we build the slideouts above the subfloor and below the main floor, for superior structural integrity.



### *Best Built. Best Backed.*

We know we build the best luxury fifth wheels and we back them up with a genuine, 5-year limited structural warranty. Our 2-year limited warranty covers materials and workmanship, giving our owners peace of mind for year-round living.





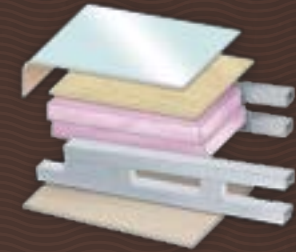
- Spun fiberglass (not cheap bead foam)
- Will not trap moisture like a foam laminated wall
- Glued and compression fit between studs—won't settle
- We design and build our walls to have a superior strength and durability. Every aluminum stud is welded on 16" centers

**SIDEWALL CONSTRUCTION**  
R-8



- Tongue and groove plywood instead of cheap OSB
- Glued and screwed to aluminum floor joist
- 30% thicker to eliminate soft spots —rugged design
- Provides two contact points for the sidewall. The main frame gives vertical support while the main floor gives lateral support

**FLOOR CONSTRUCTION**  
R-24



- Aluminum roof trusses 16" on center, with a 5" cavity and 3" crown
- 2-separate layers of insulation for a standard R14 insulation value
- 1/2" exterior grade decking
- TPO vinyl roof

**ROOF CONSTRUCTION**  
R-16



**3**  
**RUNNING GEAR**

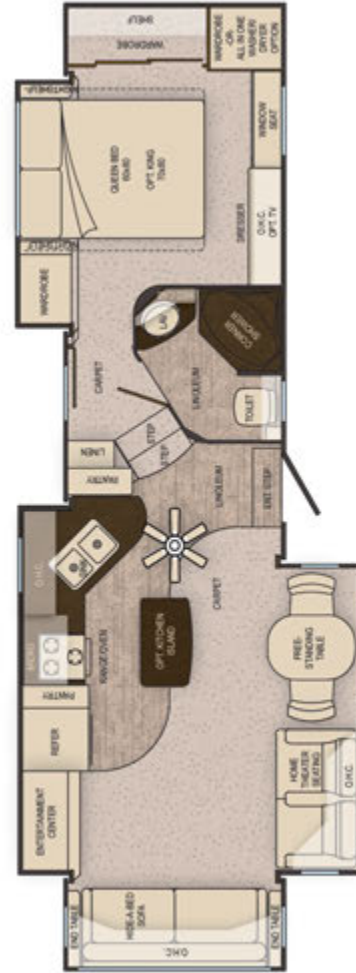
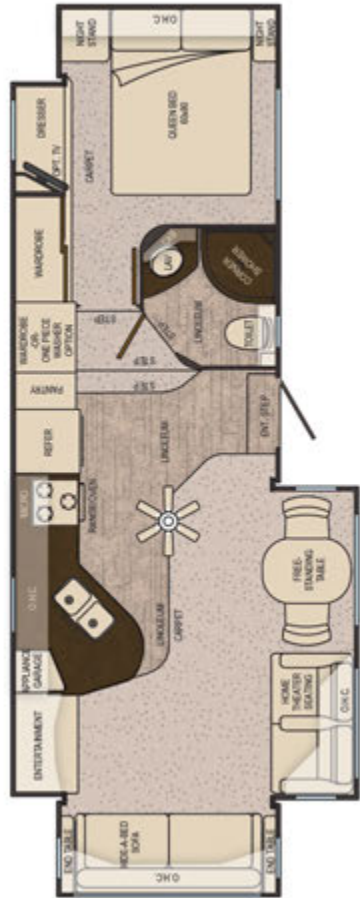
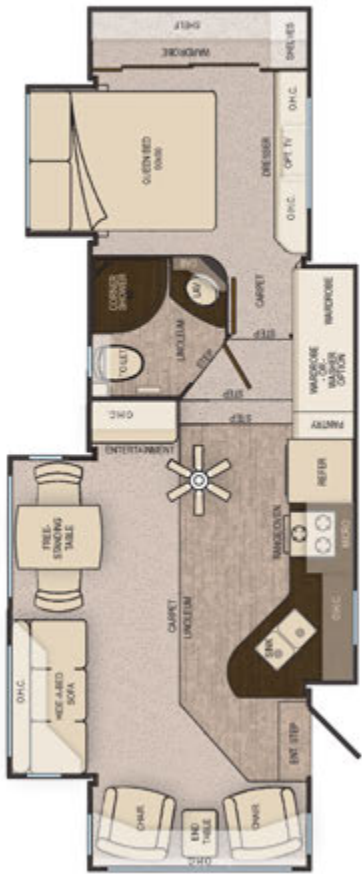


**4**  
**H-SEAL & WEDGE**



**5**  
**SLIDE MECHANISM**





### 31KSLs

Approx. Exterior Length <sup>1</sup>	<b>32'9"</b>
Approx. Exterior Width	<b>96"</b>
Approx. Exterior Height with standard A/C <sup>2</sup>	<b>12'8"</b>
Approx. Dry Axle Weight (lb) <sup>3</sup>	<b>9,415</b>
Approx. Hitch Weight (lb) <sup>3</sup>	<b>2,090</b>
Approx. Total Dry Weight (lb) <sup>3</sup>	<b>11,505</b>
Approx. Average Load Capacity (lb) <sup>3</sup>	<b>4,585</b>
Axles (number of)	<b>2</b>
Fresh Water Capacity with Water Heater (gal) <sup>4</sup>	<b>84</b>
Black/Gray Holding Tank Capacity (gal)	<b>62/62</b>

### 32FWS

Approx. Exterior Length <sup>1</sup>	<b>33'9"</b>
Approx. Exterior Width	<b>96"</b>
Approx. Exterior Height with standard A/C <sup>2</sup>	<b>12'11"</b>
Approx. Dry Axle Weight (lb) <sup>3</sup>	<b>9,640</b>
Approx. Hitch Weight (lb) <sup>3</sup>	<b>2,590</b>
Approx. Total Dry Weight (lb) <sup>3</sup>	<b>12,230</b>
Approx. Average Load Capacity (lb) <sup>3</sup>	<b>4,360</b>
Axles (number of)	<b>2</b>
Fresh Water Capacity with Water Heater (gal) <sup>4</sup>	<b>84</b>
Black/Gray Holding Tank Capacity (gal)	<b>38/72</b>

### 34SB3

Approx. Exterior Length <sup>1</sup>	<b>35'9"</b>
Approx. Exterior Width	<b>96"</b>
Approx. Exterior Height with standard A/C <sup>2</sup>	<b>12'8"</b>
Approx. Dry Axle Weight (lb) <sup>3</sup>	<b>9,880</b>
Approx. Hitch Weight (lb) <sup>3</sup>	<b>2,000</b>
Approx. Total Dry Weight (lb) <sup>3</sup>	<b>11,880</b>
Approx. Average Load Capacity (lb) <sup>3</sup>	<b>4,120</b>
Axles (number of)	<b>2</b>
Fresh Water Capacity with Water Heater (gal) <sup>4</sup>	<b>84</b>
Black/Gray Holding Tank Capacity (gal)	<b>62/62</b>

### 35SB3

Approx. Exterior Length <sup>1</sup>	<b>36'9"</b>
Approx. Exterior Width	<b>96"</b>
Approx. Exterior Height with standard A/C <sup>2</sup>	<b>12'8"</b>
Approx. Dry Axle Weight (lb) <sup>3</sup>	<b>10,070</b>
Approx. Hitch Weight (lb) <sup>3</sup>	<b>2,240</b>
Approx. Total Dry Weight (lb) <sup>3</sup>	<b>12,310</b>
Approx. Average Load Capacity (lb) <sup>3</sup>	<b>2,930</b>
Axles (number of)	<b>2</b>
Fresh Water Capacity with Water Heater (gal) <sup>4</sup>	<b>84</b>
Black/Gray Holding Tank Capacity (gal)	<b>62/62</b>

### 36FWS

Approx. Exterior Length <sup>1</sup>	<b>37'9"</b>
Approx. Exterior Width	<b>96"</b>
Approx. Exterior Height with standard A/C <sup>2</sup>	<b>12'11"</b>
Approx. Dry Axle Weight (lb) <sup>3</sup>	<b>10,505</b>
Approx. Hitch Weight (lb) <sup>3</sup>	<b>2,900</b>
Approx. Total Dry Weight (lb) <sup>3</sup>	<b>13,405</b>
Approx. Average Load Capacity (lb) <sup>3</sup>	<b>3,495</b>
Axles (number of)	<b>2</b>
Fresh Water Capacity with Water Heater (gal) <sup>4</sup>	<b>84</b>
Black/Gray Holding Tank Capacity (gal)	<b>38/72</b>

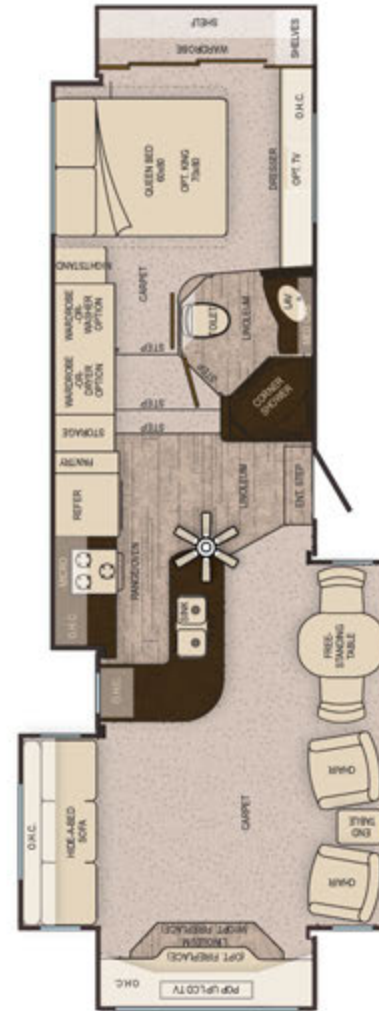
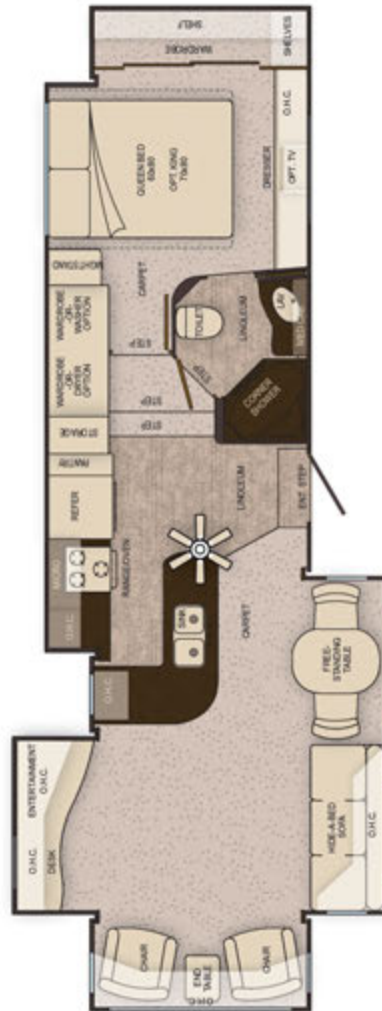
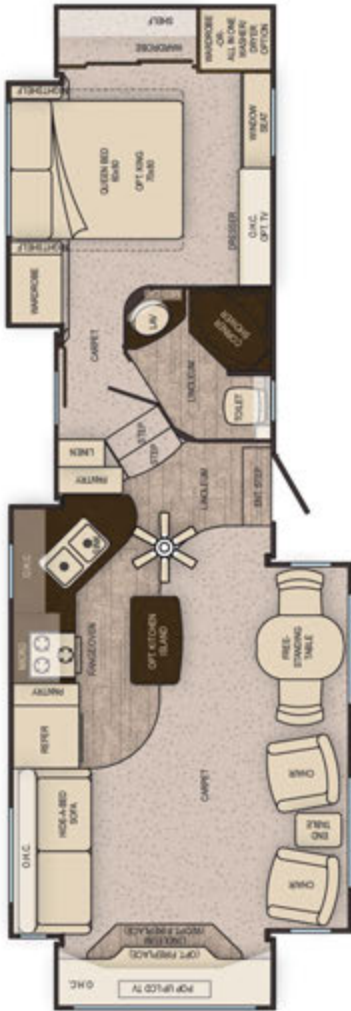
1. Exterior length does not include the front pin box or rear ladder.

2. Add 3" to overall exterior height for bedroom AC option.

3. Above listed weights are actual units that include all slideout rooms and all popular options ordered on most coaches. These weights are provided as a guideline only. The actual weight of each individual unit (all units are weighed as they come off the production line) is posted in your owner's manual.

4. Fresh water capacity includes the combined capacity of the fresh water tanks and the water heater.





<b>37RE3</b>	
Approx. Exterior Length <sup>1</sup>	<b>38'3"</b>
Approx. Exterior Width	<b>96"</b>
Approx. Exterior Height with standard A/C	<b>12'11"</b>
Approx. Dry Axle Weight (lb) <sup>2</sup>	<b>10,615</b>
Approx. Hitch Weight (lb) <sup>3</sup>	<b>2,310</b>
Approx. Total Dry Weight (lb) <sup>3</sup>	<b>12,925</b>
Approx. Average Load Capacity (lb) <sup>3</sup>	<b>3,385</b>
Axles (number of)	<b>2</b>
Fresh Water Capacity with Water Heater (gal) <sup>4</sup>	<b>84</b>
Black/Gray Holding Tank Capacity (gal)	<b>62/62</b>

<b>37KS3</b>	
Approx. Exterior Length <sup>1</sup>	<b>38'3"</b>
Approx. Exterior Width	<b>96"</b>
Approx. Exterior Height with standard A/C	<b>12'11"</b>
Approx. Dry Axle Weight (lb) <sup>2</sup>	<b>10,600</b>
Approx. Hitch Weight (lb) <sup>3</sup>	<b>2,400</b>
Approx. Total Dry Weight (lb) <sup>3</sup>	<b>13,000</b>
Approx. Average Load Capacity (lb) <sup>3</sup>	<b>3,400</b>
Axles (number of)	<b>2</b>
Fresh Water Capacity with Water Heater (gal) <sup>4</sup>	<b>84</b>
Black/Gray Holding Tank Capacity (gal)	<b>62/62</b>

<b>37CKSLs</b>	
Approx. Exterior Length <sup>1</sup>	<b>38'3"</b>
Approx. Exterior Width	<b>96"</b>
Approx. Exterior Height with standard A/C	<b>12'11"</b>
Approx. Dry Axle Weight (lb) <sup>2</sup>	<b>10,870</b>
Approx. Hitch Weight (lb) <sup>3</sup>	<b>2,780</b>
Approx. Total Dry Weight (lb) <sup>3</sup>	<b>13,650</b>
Approx. Average Load Capacity (lb) <sup>3</sup>	<b>3,130</b>
Axles (number of)	<b>2</b>
Fresh Water Capacity with Water Heater (gal) <sup>4</sup>	<b>84</b>
Black/Gray Holding Tank Capacity (gal)	<b>38/72</b>

<b>37RESLs</b>	
Approx. Exterior Length <sup>1</sup>	<b>38'3"</b>
Approx. Exterior Width	<b>96"</b>
Approx. Exterior Height with standard A/C	<b>12'11"</b>
Approx. Dry Axle Weight (lb) <sup>2</sup>	<b>11,075</b>
Approx. Hitch Weight (lb) <sup>3</sup>	<b>2,725</b>
Approx. Total Dry Weight (lb) <sup>3</sup>	<b>13,800</b>
Approx. Average Load Capacity (lb) <sup>3</sup>	<b>2,925</b>
Axles (number of)	<b>2</b>
Fresh Water Capacity with Water Heater (gal) <sup>4</sup>	<b>84</b>
Black/Gray Holding Tank Capacity (gal)	<b>38/72</b>

<b>37RSQ</b>	
Approx. Exterior Length <sup>1</sup>	<b>38'3"</b>
Approx. Exterior Width	<b>96"</b>
Approx. Exterior Height with standard A/C	<b>12'11"</b>
Approx. Dry Axle Weight (lb) <sup>2</sup>	<b>10,950</b>
Approx. Hitch Weight (lb) <sup>3</sup>	<b>2,425</b>
Approx. Total Dry Weight (lb) <sup>3</sup>	<b>13,570</b>
Approx. Average Load Capacity (lb) <sup>3</sup>	<b>2,855</b>
Axles (number of)	<b>2</b>
Fresh Water Capacity with Water Heater (gal) <sup>4</sup>	<b>84</b>
Black/Gray Holding Tank Capacity (gal)	<b>62/62</b>

1. Exterior length does not include the front pin box or rear ladder.

2. Add 3" to overall exterior height for bedroom AC option.

3. Above listed weights are actual units that include all slideout rooms and all popular options ordered on most coaches. These weights are provided as a guideline only. The actual weight of each individual unit (all units are weighed as they come off the production line) is posted in your owner's manual.

4. Fresh water capacity includes the combined capacity of the fresh water tanks and the water heater.



THE IN-HOUSE DIFFERENCE.

Our solid wood cabinet doors are produced in-house by highly skilled craftsmen, and our plush fabrics are hand-chosen by expert designers to create beautifully coordinated interiors.



STANDARD

FULL BODY PAINT

RIVER CANYON



Sofa, Recliner, Home Theatre



Accent



Dinette



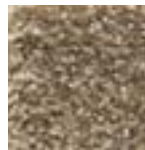
Bedspread



Bedspread



Border

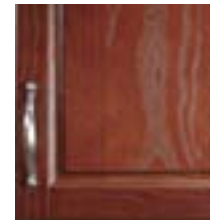


Carpet

CHOCOLATE CHERRY



ARLINGTON CHERRY



DUNE



Sofa, Recliner, Home Theatre



Optional Sofa, Recliner, Home Theatre



Accent, Dinette



Bedspread



Border



Carpet

GLAZED BROOK CHERRY



LOTUS



Sofa, Recliner, Home Theatre



Optional Sofa, Accent



Optional Recliner, Home Theatre, Dinette



Bedspread



Border



Carpet

CORIAN® COCOA BROWN



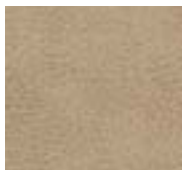
Standard

CORIAN® GRANOLA



Optional

PORT



Sofa, Recliner, Home Theatre



Optional Sofa, Recliner, Home Theatre



Accent, Dinette



Bedspread



Bedspread



Border



Carpet



## STANDARD PACKAGES

### CARRIAGE "BIGFOOT" PACKAGE

Four Individual Cylinder/Jacks  
Fully Automatic Controls  
17,000 (front), 12,000 (rear) per Jack Capacity  
Lifetime Cylinder Warranty

### CARRIAGE "LUXURY" PACKAGE

40" Samsung LCD TV (37" on 31KSLs)  
Samsung FM/CD/DVD Home Theatre System 5.1 with Subwoofer  
Ext. E-Center prep in basement  
Window in Stool Room  
15,000 BTU High Capacity A/C with heat pump  
Two Plush Recliners or Theater Seating (floorplan applicable)  
Three Zone Halogen Lighting with Dimmer Switches  
Carefree Travel-R Electric Awning  
Hi-Gloss Gelcoat Fiberglass  
2 Luxury Folding Chairs  
2 Dinette Chairs and Table with Leaf  
60"x80" Pillowtop Queen Mattress  
2nd Satellite Prep to Bedroom  
Baggage Door Struts  
Frameless Hehr Windows  
Ball-Bearing Drawer Guides  
Hardwood Stiled Cabinetry  
Hidden Hinges on Cabinets

### CARRIAGE "PERFORMANCE" PACKAGE

Corian Countertops: Kit and Bath  
E-Z Lube Axles  
MOR/ryde® Rubber Equalizer Suspension System  
Aluminum Wheels  
Day/Night Shades Living Room/Kitchen  
Night Shades in Bedroom  
50 Amp Service, Universal Docking Station  
Spare Tire with Crank Up Mount  
Hide-A-Bed Sofa  
Stainless Steel Deep Bowl Sink  
30" OTR Microwave  
2nd AC Prep  
Tongue and Groove Plywood Flooring  
Vinyl TPO Roof  
Washer/Dryer Prep  
Battery Disconnect  
12 Gal. Water Heater

## SYSTEM/FANS

### STANDARD FEATURES

50 amp service with marine power cord  
AC/DC power converter with charger (60 amp)  
Floor-ducted forced air furnace with electronic ignition  
35,000 BTU Furnace  
Dual 30# LP gas bottles with auto change over  
Full systems monitor panel  
Universal docking Center (dump valves, water hook-ups, cable and satellite connection, coil hose, pump switch and light)  
12 gallon gas/electric water heater with DSI  
Enclosed heated and insulated holding tanks and valves with separate heat duct  
Ceiling fan

### OPTIONS

**Astro Foil Insulation Package (per ft.)**  
**Fan-Tastic Vent with wall switch**  
**Fan-Tastic Vent with Thermometer and R/S**  
**Gen. Prep (Includes auto change over)**  
**Gen. Onan 5,500 LP Marquis Gold (factory installed generators include prep charge)**  
**3M Water Purifier (whole house)**  
**Keyless Entry at Entrance Door**

## EXTERIOR/AWNINGS

### STANDARD FEATURES

Safety glass windows with GL20 solar tinted glass  
Security lights (2) at front corners  
12V patio light and step light with wall switch  
Lights in outside storage compartments  
Roof ladder  
Fiberglass sidewalls: high gloss gelcoat  
Molded fiberglass front and rear cap: high gloss gelcoat  
Carefree Travel-R electric patio awning  
Slam latches on baggage doors  
Felt-lined exterior compartments with easy-clean flooring  
Color coordinated skirting and fenders  
Exterior E-center prep (110V and cable prep in basement)

### OPTIONS

**Full Body Painted Exterior Upgrade**  
**Dual pane windows**  
**2nd Electric Patio Awning on D/S Slideout (N/A 31KSLs, 34SB3)**

## CONSTRUCTION/SAFETY AND RUNNING GEAR

### STANDARD FEATURES

Aluminum superstructure (heavy-gauge welded)  
5/8" exterior grade tongue and groove plywood floor  
1/2" roof decking  
5" aluminum trussed roof on 16" centers or less  
Owens Corning® insulation (including slideout floors)  
Two, 2"x6" stacked steel tube chassis  
Heavy-duty leaf spring  
Heavy-duty four wheel electric brakes (2"x12")  
Spare tire—crank up

### OPTIONS

**Raise axles for 4WD truck**  
**MOR/ryde® rubber pin box**  
**Disc brakes**

## SEALS & SURCHARGES

### OPTIONS

**State Seal: Nebraska**  
**State Seal: Oregon**  
**State Seal: Washington**  
**RVing Coalition Fee**  
**CSA Surcharge (CANADA DEALERS ONLY)**  
**CSA Mandatory Brake Package**

## INTERIOR/LIVING ROOM

### STANDARD FEATURES

Free-standing wooden end table  
Two Plush Recliners or Theater Seating (floorplan applicable)  
Hide-A-Bed Sofa  
Wood trimmed windows  
Day/night shades

### OPTIONS

**Dyson Multi-floor Vacuum**  
**Fireplace**  
**70" Home theater seating with 80" Rear sofa (36FWS, 37KS3, 37RSQ)**  
**Coffee Table with Lift Top**  
**Black-Out Shades (Living Room and Kitchen)**  
**Samsung Blu-Ray Home Theatre**  
**All Linoleum in Living Area only**

## ENTERTAINMENT

### STANDARD FEATURES

40" Samsung LCD TV (37" on 31KSLs)  
Samsung FM/CD/DVD Home Theatre System 5.1 with Subwoofer  
Winegard TV antenna with power booster and signal meter  
Cable TV and phone jack hook-up  
Satellite prep (RG-6 cable)

## BEDROOM

### STANDARD FEATURES

Pillow-top innerspring mattress  
Under bed storage in all models  
Privacy door in bedroom  
Flat bedroom/bathroom floor  
Full stand-up bedroom (6'5" at foot of bed)  
Individual reading lights above headboard  
Wood and leather padded headboard  
Comforter with pillows

### OPTIONS

**King Bed Pillowtop (35SB3, 36FWS, 37RE3, 37KS3, 37CKSLs, 37RESLS, 37RSQ)**  
**22" LED Sansui TV in Bedroom**

## KITCHEN

### STANDARD FEATURES

Corian countertops at kitchen and bath  
Recessed range with Corian cover  
Microwave oven with built-in range hood with power exhaust fan and light  
Free-standing dinette table with leaf and 2 folding and 2 standard chairs  
Decorative Corian back splash

### OPTIONS

**Norcold 9.5 cu ft (N1095)**  
**Norcold 4-Door (1210LR) (N/A 32FWS, 34SB3)**  
**Norcold 4-Door with Ice Maker (1210LRIM)**  
**(N/A 32FWS, 34SB3, 37RSQ)**  
**HPL Wood Look Floor at kitchen**  
**Convection Microwave (Vented to Exterior)**  
**Cooktop with doors below (IPO Oven)**  
**Kitchen Island Cabinet (35SB3, 36FWS, 37RE3, 37KS3)**  
**Split Level Kitchen Island cab. with 2 bar stools (35SB3, 36FWS, 37RE3, 37KS3)**

## BATHROOM

### STANDARD FEATURES

12V power vent  
Heat and A/C ducts in stool room  
Skylight over shower  
Removable brushed nickel shower head and hardware



## Our History

### A HERITAGE OF EXCELLENCE.

Carriage, Inc. was founded in 1968, and for nearly 44 years we have been located in Millersburg, Indiana on a 72-acre campus with nearly 25 buildings devoted to building our luxury fifth wheels. While others in our industry have become assemblers, we are committed to manufacturing as many components as possible in house, to our exacting specifications. What does this mean for you? It means you can count on Carriage for industry-leading products and great service to match. We take great pride in the fact that we've received the most awards for quality in the towable category, as voted by both dealers and customers. And most importantly, we are proud to have the most loyal owners you'll find anywhere. Join us. We look forward to welcoming you to the Carriage family.



#### LEARN MORE AT [CARRIAGEINC.COM](http://CARRIAGEINC.COM).

Visit us online for more information about our company and our products, including the latest news, full lists of standard and optional features and construction details. It's also a great way to locate the Carriage Dealer nearest you.

#### CARRIAGE TRAVEL CLUB.

Be part of the exclusive Carriage Travel Club, one of the oldest and most active owners' clubs in the industry. You'll have access to regional clubs, newsletters, our 20-site on-campus campground and service center and a Grand National rally. Visit [carriageowners.net](http://carriageowners.net) for more.



THE WORLD'S FINEST FIFTH WHEELS

YOUR PRIVATE CAMEO RESORT VEHICLE DEALER:



CARRIAGE INC.  
P.O. BOX 246  
MILLERSBURG, IN 46543  
PH: 574.642.3622  
PH: 800.832.3632  
FX: 574.642.3319  
[CARRIAGEINC.COM](http://CARRIAGEINC.COM)



*This Brochure Provided By...*

**motor  
sportsland**



*Let Us  
Help YOU  
Get Away!*

*4001 S. State St.  
Salt Lake City, UT 84107*

*801.713.0689  
888.758.0364*

*[www.motorsportsland.com](http://www.motorsportsland.com)*