

DISCOVERY® 2012

FLEETWOOD RV | CLASS A DIESEL



Gold Starfire

TOP FEATURES

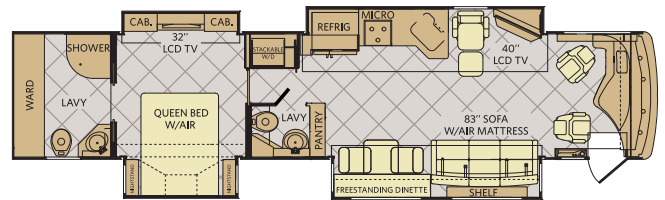
- 380HP Cummins® ISC 8.3L Engine
- Full-Body Paint
- Molded Fiberglass Roof
- Sony® Electronics
- 2,000-Watt Pure Sine Wave Inverter w/Remote
- 8.0 kW Onan® Quiet Diesel Generator
- Porcelain Flooring with Decorative Tile Inserts
- Hardwood Cabinet Doors/Drawers
- Double Roller Shades
- Side Swinging Luggage Doors
- 84" Interior Ceiling Height
- Optional Exterior Grill and Galley
- Chrome Luggage Door Handles
- Liberty Chassis (42' models only)

36J



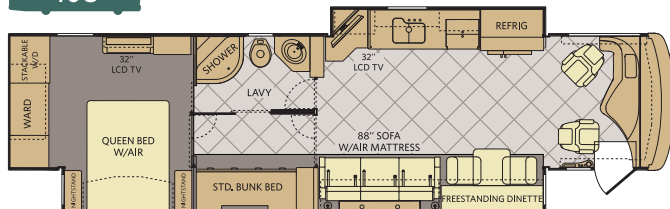
INTERIOR STORAGE CAPACITY: 215 CU. FT.
EXTERIOR STORAGE CAPACITY: 140 CU. FT. Available options: 087, 144, 635, 830, 853, 854, 856

42D



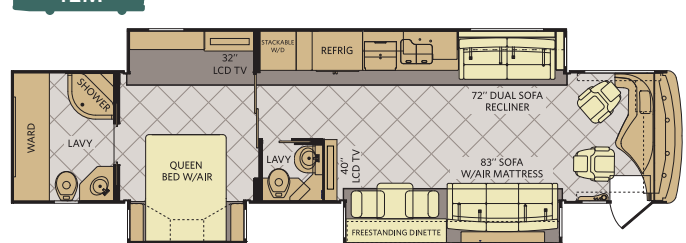
INTERIOR STORAGE CAPACITY: 204 CU. FT.
EXTERIOR STORAGE CAPACITY: 189 CU. FT. Available options: 087, 139, 140, 144, 830, 853, 854, 856

40G



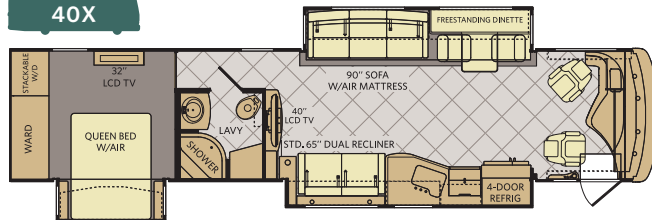
INTERIOR STORAGE CAPACITY: 166 CU. FT.
EXTERIOR STORAGE CAPACITY: 208 CU. FT. Available options: 087, 144, 635, 830, 853, 854, 856, 867, 878

42M



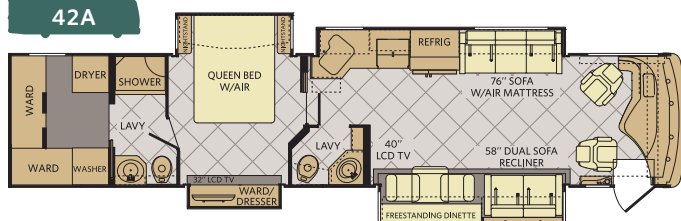
INTERIOR STORAGE CAPACITY: 207 CU. FT.
EXTERIOR STORAGE CAPACITY: 189 CU. FT. Available options: 087, 144, 635, 830, 853, 854, 856

40X



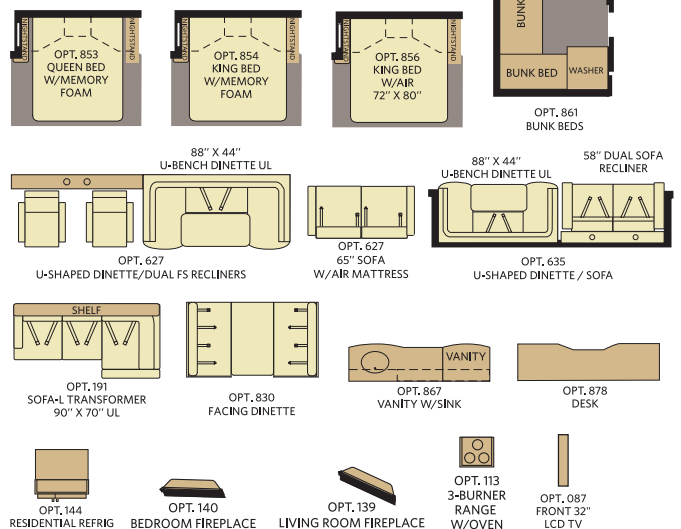
INTERIOR STORAGE CAPACITY: 197 CU. FT.
EXTERIOR STORAGE CAPACITY: 208 CU. FT. Available options: 087, 113, 144, 191, 627, 635, 830, 853, 854, 856

42A



INTERIOR STORAGE CAPACITY: 152 CU. FT.
EXTERIOR STORAGE CAPACITY: 189 CU. FT. Available options: 087, 144, 830, 853, 854, 856, 861

OPTIONS



WEIGHTS & MEASUREMENTS

CHASSIS	POWER BRIDGE [†]			LIBERTY [†]		
MODELS	36J	40G	40X	42A	42D	42M
Wheelbase (inches)	228"	276"	276"	302"	302"	302"
GVWR (lbs) ¹	32,400	32,400	32,400	44,600	44,600	44,600
Front GAWR (lbs) ²	12,400	12,400	12,400	14,600	14,600	14,600
Tag Axle GAWR	N/A	N/A	N/A	10,000	10,000	10,000
Rear GAWR (lbs) ²	20,000	20,000	20,000	20,000	20,000	20,000
GCWR (lbs) ³	42,400	42,400	42,400	54,600	54,600	54,600
Hitch Rating Weight (lbs) ¹	7,500	10,000	10,000	10,000	10,000	10,000
Tongue Weight (lbs) ¹	750	1,000	1,000	1,000	1,000	1,000
Fuel Capacity (gal)	100	100	100	150	150	150

POWER BRIDGE (40' MODELS)

Model: Freightliner® XCM Series
Engine: Cummins® 8.3L ISC
Transmission: Allison® 3000 MH 6-Speed w/Electronic Shifter

Alternator: Delco Remy 160 Amp
Torque: 1,050 lb-ft @ 1,400 RPM
Horsepower: 380HP

LIBERTY CHASSIS (42' MODELS)

Model: Spartan®
Engine: Cummins® 8.3L ISC
Transmission: Allison® 3000 MH 6-Speed w/Electronic Shifter

Alternator: Leece Neville 170 Amp
Torque: 1,050 lb-ft @ 1,400 RPM
Horsepower: 380HP

DIMENSIONS & CAPACITIES

MODELS	36J	40G	40X	42A	42D	42M
Overall Length ⁴	37' 7.5"	41' 7.5"	41' 7.5"	43' 4"	43' 4"	43' 4"
Overall Height (with A/C)	12' 10"	12' 10"	12' 10"	12' 10"	12' 10"	12' 10"
Overall Width (maximum) ^{5, 6}	102"	102"	102"	102"	102"	102"
Interior Height (maximum)	84"	84"	84"	84"	84"	84"
Interior Width (maximum)	96"	96"	96"	96"	96"	96"
Fresh Water Holding Tank (gal)	100	100	100	100	100	100
Grey Water Holding Tank (gal)	75	75	75	60	60	60
Black Water Holding Tank (gal)	50	50	50	40	40	40
Appliance Propane Tank (gal) (WC) ⁷	38.7	38.7	38.7	28.2	28.2	28.2
Water Heater Tank (gal)	10	10	10	10	10	10

Liquid Weight Reference:

Water (gal) = (8.3 lbs/3.8 kgs) Fuel (gal) = (6.1 lbs/2.8 kgs) Propane (gal) = 4.2 lbs/1.9 kgs

Metric Conversion:

Multiply pounds x 0.453 to obtain kilograms. Multiply gallons x 3.785 to obtain liters. Multiply liters x 61 to obtain cubic inches.

Disclaimers

- GVWR (Gross Vehicle Weight Rating) is the maximum permissible weight of this fully loaded motor home. The GVWR is equal to or greater than the sum of the (UVW) unloaded vehicle weight plus the (OCCC) occupant cargo-carrying capacity.*
- GAWR (Gross Axle Weight Rating) is the maximum permissible loaded weight a specific axle is designed to carry.
- GCWR (Gross Combined Weight Rating) is the value specified by the motor home manufacturer as the maximum allowable loaded weight of this motor home with its towed vehicle. Towing and braking capacities may be different. Refer to Fleetwood and chassis manufacturer's manuals for complete information.
- Length measured from front bumper to rear bumper (excludes accessories).
- Excludes safety equipment and awnings.
- Motor homes feature a body width over 96" which will restrict your access to certain roads. Before purchasing, you should research any state and/or province road laws which may affect your usage.
- Tank manufacturer's listed water capacity (WC). Actual propane capacity is 80% of water listing as required by the safety code.

[†] The chassis manufacturer recommends the installation of a supplemental brake control system to activate the brakes on the vehicle or trailer you are towing. Hitch receiver ratings expressed are maximum for the hitch receiver installed and may require the purchase of additional equipment that is dependent on the weight of the towed load. Consult with hitch receiver manufacturer for further information.

* UVW and OCCC are found on the label containing the federal certification tag in each RV.

RV OWNERCARE**

Limited one-year/15,000-mile coach warranty and three-year/45,000-mile structural warranty, whichever occurs first, and it is fully transferable for the first 12 months. RV OWNERCARE is one of the RV industry's most comprehensive programs and includes systems, appliances, components and construction, with no deductible and no service charge. RV OWNERCARE coverage is provided by a company that will be around in the future to service your needs. See your nearest Fleetwood RV dealer for a full explanation of benefits and restrictions.

CONTACT US

To locate a dealer near you, visit our website at www.fleetwoodrv.com or call 1-800-322-8216. We can also be contacted at Fleetwood RV Customer Relations, P.O. Box 1007, Decatur, IN 46733.

FLEETWOOD RV MOTOR HOME CLUBS

As a Fleetwood RV owner, you're invited to become a member of several Fleetwood RV motor home clubs. Becoming a club member is the perfect way to meet other Fleetwood owners who love to travel across America and share in the RV lifestyle. Visit our website at www.fleetwoodrv.com/owners_clubs to learn more and join the fun.

EXTERIOR GRAPHICS/INTERIOR DÉCOR



Cashmere Twist



Copper Java



Concord Frost



Platinum Frost



Gold Starfire

ANTIQUE COPPER	CHESTNUT RAVEN	MOONSTONE KHAKI		CABINETRY
			WARM HONEY	
			BROWN SUGAR	

IMPORTANT—PLEASE READ

Product information, photography and illustrations included in this publication were as accurate as possible at the time of printing. For further product information and changes, please visit our website at www.fleetwoodrv.com or contact your local Fleetwood RV dealer. Prices, materials, design and specifications are subject to change without notice. All weights, fuel, liquid capacities and dimensions are approximate. Fleetwood RV has designed its recreational vehicles to provide a variety of uses for customers. Each vehicle features optimal seating, sleeping, storage and fluid capacities. The user is responsible for selecting the proper combination of loads (i.e., occupants, equipment, fluids, cargo, etc.) to ensure that the vehicle's capacities are not exceeded.



**All 2012 Fleetwood RV motor homes include a 1-year membership to Coach-Net. For complete info, see your Fleetwood RV dealer.

©2011 Fleetwood RV Inc. Printed in USA. Inventory Control Number D112B1, 08/11. Model Year 2012, First Edition.