



2012 | VENTANA LE  
STEP UP TO A NEWMAR DIESEL.

2012 | VENTANA  
COMFORT, DESIGNED IN.

# VENTANA LE

## DIESEL MOTOR COACH

RELAX. IT ONLY LOOKS EXPENSIVE.

This smart new diesel coach is the one you've been waiting for. In it, you'll enjoy legendary Newmar Diesel quality for significantly less – and get more coach than you would from similarly priced competitors.



ENTRY STEPS



STACKED, LINE OF SIGHT GAUGE STRUCTURE



THIS COACH IS  
BUILT FOR TRAVELING.  
SO LET'S GO!

This beauty boasts a Freightliner® Chassis – so you know it's solid. Newmar's Full-Paint Masterpiece Finish™ with front protective film and undercoating assure that its beauty lasts for many trips to come. And Ventana LE's entrance door with automatic step and assist handle make it easy for everyone to enjoy.

YOU'RE IN CHARGE.

With cruise control, an antilock brake system, VIP Smart Wheel and optional side view cameras, you take command.

POWER WHERE YOU NEED IT.

With a 340 horsepower Cummins ISB Diesel Engine, you'll enjoy Ventana LE's extra pushing power on the road.

## WITH ALL VENTANA LE'S EXTRAS, YOU'LL BE SITTING PRETTY.

You'll luxuriate in Ventana LE's Flexsteel® Ultralux Leather Furniture and choose your light level with day/night shades. Plus options like a 32" front overhead TV and Sony® Surround Sound System turn your coach into a movie theater. Few coaches offer this much at this price point. Enjoy!



LIVING



KITCHEN

## KITCHEN.

Your Ventana LE has a full kitchen with plenty of cabinet storage, a polished Corian® countertop and full extension residential style easy-open drawers that come all the way out. Its appliances are prime, too, including a Spacesaver® microwave convection oven and a 10 cubic foot refrigerator.

## DINING.

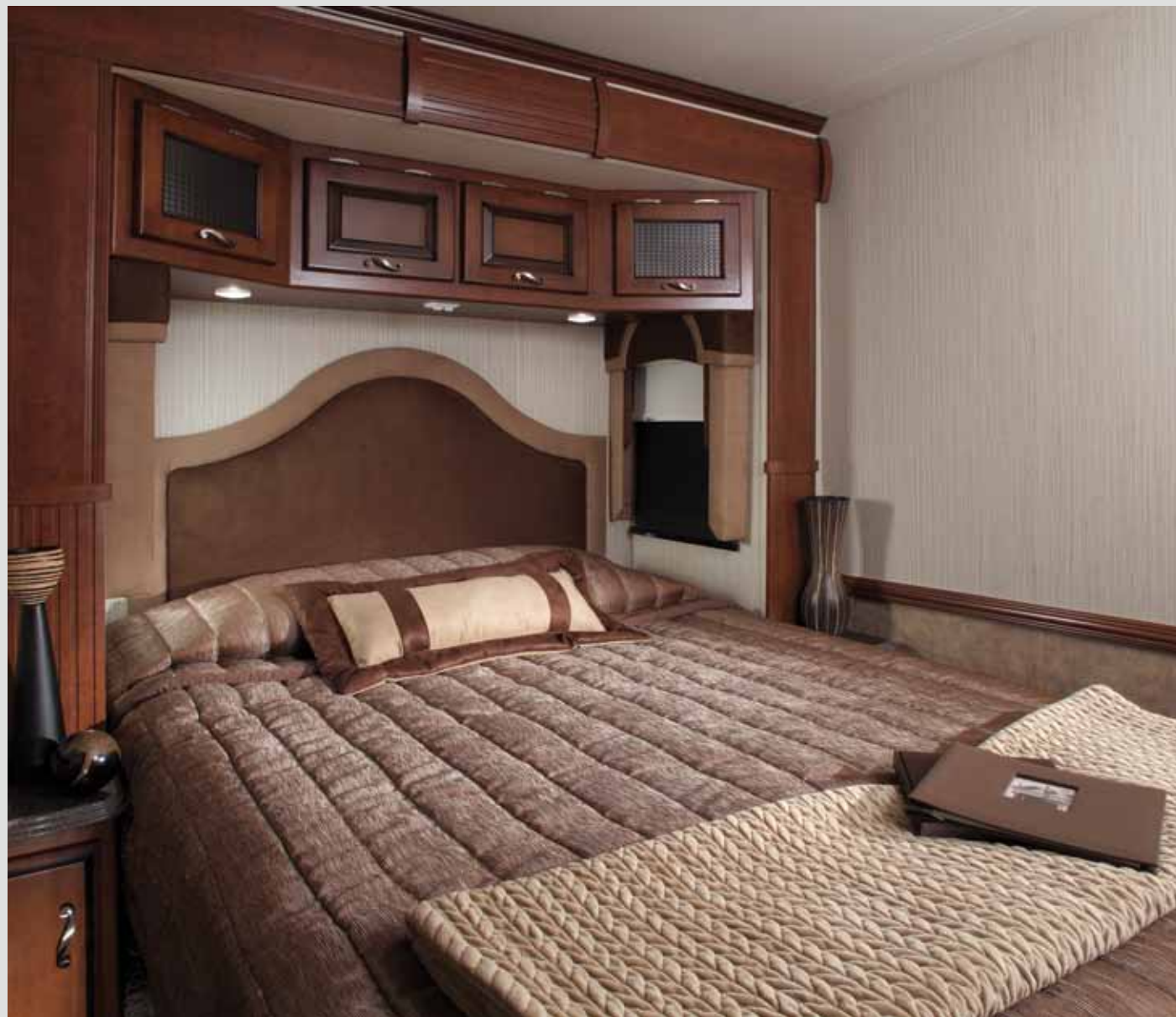
At meals or any time, relax at your booth dinette with laminate tabletop and Corian® edge. Ventana LE's roomy bench seating with in-bench storage give you enough room to comfortably entertain four guests. And its large dining window lets you relax and enjoy the scenery.



DINING

## BEDROOM.

This newly appointed Ventana LE coach comes with the quality materials and craftsmanship you expect from Newmar. Like Empire Maple hardwood raised panel cabinets with extra storage surrounding a queen size bed. Plus a quilted designer bedspread and accent pillow.



BEDROOM



BATHROOM



VANITY



BEDROOM ENTERTAINMENT

## BATHROOM (above).

Savor your roomy Ventana LE bathroom with radius shower, stainless steel sink and full height wardrobe. Enjoy its indulgent extras, too – like a pull out step stool, double medicine cabinets and abundant storage and counter space. The 3862 floorplan even offers a bath and a half.

## VENTANA LE FLOOR EXTERIOR & INTERIOR OPTIONS



Sherwood



Nottingham

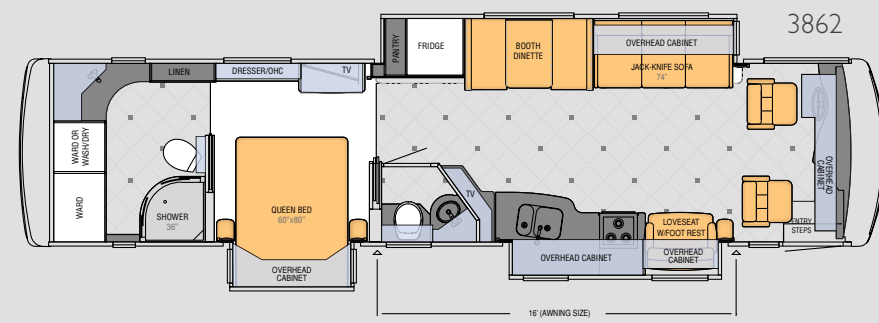
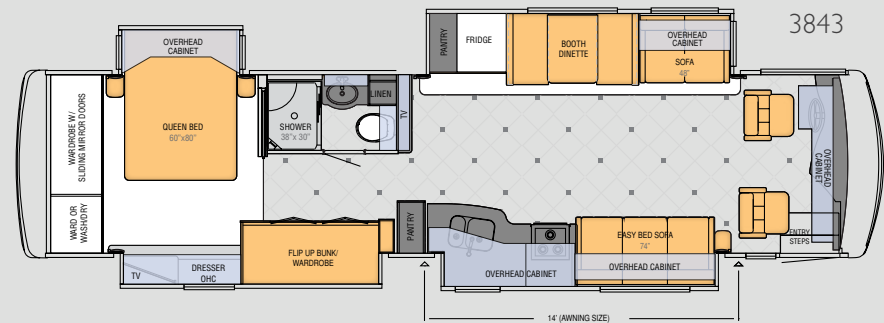
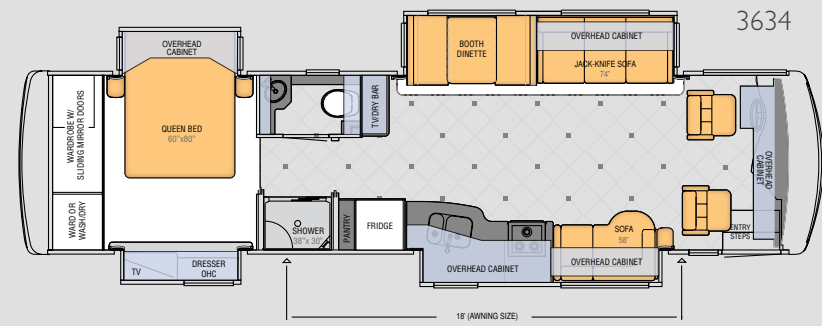


Empire Maple



Monterey Glazed Maple

Choose the standard features and options that fit your lifestyle. With three smart floorplans to choose from, you can create the Ventana LE that's right for you. The bath and a half featured in the 3862 floorplan makes entertaining convenient. Ventana LE offers you three unique main cabin seating configurations, too.



VENTANA LE FLOOR PLAN SPECIFICATIONS

Floor Plan	App. Overall Length	Width	App. Overall Height	Interior Width	Interior Height	Grey	Sewage	Water	Propane	Furnace
3634	36' 08"	101.5"	12' 8"	95.5"	84"	65 gal.	45 gal.	105 gal.	32 gal.	40,000 btu
3843	38' 08"	101.5"	12' 8"	95.5"	84"	65 gal.	45 gal.	105 gal.	32 gal.	40,000 btu
3862	38' 08"	101.5"	12' 8"	95.5"	84"	65 gal.	45 gal.	105 gal.	32 gal.	40,000 btu

CHASSIS FEATURES

- Freightliner Chassis with 340Hp Cummins ISB Engine
- Chrome Wheel Simulators
- Electric Leveling Jacks with Automatic Control
- Cruise Control
- Manual Tilt and Telescope Steering Column with VIP Smart Wheel
- Recessed Fuel Fills with Crossover to Fill from Either Side
- Anti-Lock Braking System

AIR CONDITIONING & HEATING

- Two 13.5M Penguin™ Heat Pump Central Air Conditioners
- Propane Furnace with In-Floor Ducted Heat\*
- Dash Heater & High-Output Air Conditioner
- Propane Leak Detector
- Wall Mounted Sensors for Heating and Air Conditioning

APPLIANCES & ACCESSORIES

- Spacesaver Microwave Oven
- Three-burner range with oven
- Norcold 10 Cu. Ft. Refrigerator
- 10 gal. Gas/Electric Water Heater with Direct-Spark Ignition\*
- One-Piece Compact Washer/Dryer Prep\*
- LCD TV in Living and Bedroom Areas, TV Sizes Vary per Floorplan\*
- AM/FM Dash Radio with MP3 Adapter and CD Player
- Rearview Color Monitor System
- DVD Player in Bedroom
- 10 Bc Fire Extinguisher, Smoke Detector and Carbon Monoxide Detector
- TV Antenna with Power Booster
- Satellite Prep

CABINETS & FURNITURE

- Empire Maple Raised Panel Overhead Cabinet Doors
- Booth Dinette\*
- Polished Corian Countertop in Kitchen with Stainless Steel Sink and Flush Sink Covers
- Laminate Countertop with polished Corian edges in Bathroom with Stainless Steel Sink
- Laminate Countertop with polished Corian edges on Nightstands, Dressers and Chest of Drawers
- Residential Style Full Extension Ball Bearing Drawer Guides
- Flexsteel Ultralux Leather Furniture
- Ultralux Leather Sofa
- Smooth-Top Mattress with Quilted Bedspread, Shams and Accent Pillows
- Pullout Step-stool with Storage in Bathroom

ELECTRICAL FEATURES

- 6.0 kW Cummins Onan Diesel Quiet Series Generator
- 50 Amp Electrical Service with Flexible Cord
- Four 6 Volt House Batteries on Pullout Tray
- Battery Disconnect Switch
- 110 Volt Exterior Receptacle
- 1200 Watt Inverter
- Emergency Start Switch
- Exterior Security Light on Doorside
- Midship Side Turn Signals
- Incandescent Ceiling Lights with Fluorescent under Overhead Cabinets
- Manually Operated Hold-To-Run Slideout Switch
- ICC Light Flasher Switch
- 12 Volt Auxiliary Receptacle on Dashboard
- Exterior TV Jack
- Interior Courtesy Lights

EXTERIOR FEATURES

- Full-Paint Masterpiece Finish™ with Front Protective Film
- One-piece Bonded Windshield
- Convex Exterior Mirrors with Remote Control and Defrost
- Entrance Door with Automatic Step
- Power Flush Stepwell Cover
- Lighted Exterior Storage Compartments with Cargo Liner
- Assist Handle at Entrance Door
- Mud Flaps
- Rear Ladder
- Undercoating

INTERIOR FEATURES

- Padded Vinyl Ceiling
- Day/Night Pleated Window Shades & Lambrequins
- Mini Blinds in Kitchen and Bathroom
- Vinyl Tile Floor in Kitchen, Bathroom and Living Area
- Deluxe Carpeting in Living Room and Bedroom
- Day/Night Privacy Shades on Driver/ Passenger Side Windows
- Power Day/Night Shades for Windshield

PLUMBING & BATH FEATURES

- Demand Water System with SHURflo Pump
- Sewage Holding-Tank Rinse
- Water Heater Bypass System\*
- Thetford™ Aqua Magic Plus China Stool
- Monitor Panel
- Radius Shower with Glass Door\*
- Exterior Shower
- Water Filter for Entire Unit

CONSTRUCTION FEATURES

- BriteTEK™ Roof with 9MM Decking
- Gelcoated Fiberglass Exterior Sides
- Gelcoated Fiberglass Front and Rear Caps
- Aluminum-Frame Sidewalls & Roof Construction, 16" on Center
- 5/8" Foam Insulation Laminated in Sidewalls & Ceiling

WINDOWS, AWNINGS, & VENTS

- Tinted Safety-Glass Windows
- Skylight in Bathroom \*
- A & E 9000 Side Awning
- A & E Oasis Manual Front Entrance Door Awning
- A & E Slideout Awning Covers
- Power Vent in Bathroom and Kitchen

OPTIONS

AIR CONDITIONING & HEATING

- 2-15M Penguin Heat Pump Air Conditioner and Energy Management System\*

APPLIANCES & ACCESSORIES

- Norcold 12 Cu. Ft. Four-Door Refrigerator with Icemaker\*
- Maytag Residential Refrigerator with Icemaker and Water Dispenser; includes 2000 Watt Pure Sine Inverter with Two Extra Batteries\*
- 30" Convection Microwave Oven
- Three-burner Cooktop with Piezo Ignition
- Icemaker Added to Refrigerator \*
- One-Piece Washer/Dryer \*
- Two-Piece Washer/Dryer\*
- 32" LCD TV in Front Overhead\*
- Automatic Satellite without Receiver
- Sony Surround Sound System with Sub Woofer
- Sideview Cameras
- CB Radio with Antenna
- CB Antenna
- 11" Flip-down LCD Monitor/DVD Player with Headphones at Each Bunk\*

CABINETS & FURNITURE

- Monterey Maple Cabinets
- Hide-A-Bed Sofa with Air Mattress\*
- Sleep Number Deluxe Air Mattress

ELECTRICAL FEATURES

- 8.0 Kw Onan Diesel Quite Series Generator

INTERIOR FEATURES

- Halogen Lighting
- Vinyl Floor Extended into Bedroom Area
- MCD Day/Night Shades in place of Day/Night Pleated Shades

WINDOWS, AWNINGS, & VENTS

- A & E Weather Pro Side Awning & Oasis Power Front Entrance Door Awning
- Bunk Windows
- Dual Pane Windows
- Fan-Tastic Vent with Rain Sensor in Kitchen and Bathroom Areas

\*Check with dealership on floor plan availability and complete listing of features.

# VENTANA

## DIESEL MOTOR COACH

THIS IS QUALITY YOU CAN FEEL.

A powerful diesel pusher. Polished Corian® countertops. Newmar's traditional design touches including solid hardwood cabinets and Flexsteel® Ultralux leather furniture. You get all of this – plus a sticker price that won't blow you away. And with nine floorplans, the 2012 Ventana also offers a wealth of living options.



COMFORT DRIVE™ EQUIPPED

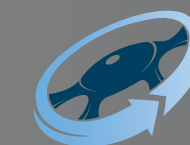


ON OR OFF THE ROAD,  
VENTANA PUTS YOU  
AT EASE.

With Comfort Drive™ Steering, your Ventana will hug the road and make your driving easy. Its Ultralux leather captain's chair doesn't hurt, either. When the driving is done, enjoy an outdoor movie with an optional external Sony® 40" flatscreen TV/entertainment center with Sony® AM/FM radio, CD player and speakers.

**EASY COCKPIT CONTROLS.**  
Ventana's VIP Smart Wheel fingertip controls and dual color monitors for GPS and rear viewing help you navigate easily.

**VENTANA'S NEW GRAPHICS FLOW.**  
The upswept lines of the 2012 Ventana's exterior paint finish are as uplifting as its earth tones and metallic hues.



Comfort Drive™  
STEERING



**STEP INTO YOUR VENTANA AND YOU KNOW YOU'VE MADE THE RIGHT DECISION.**

Living and traveling in your Ventana is the good life. Ultralux leather-covered Flexsteel® lounges configured to your lifestyle\*, polished porcelain flooring with newly detailed inserts and polished Corian® countertops give you a sense that you'll enjoy each day.

**GORGEOUS WOOD THROUGHOUT.**

Newmar's master craftsmen take pride in crafting traditional solid wood raised panel cabinetry for each Ventana in Empire/Manhattan Glazed Maple or Monterey/Silverado Glazed Maple. Every detail is considered, from fine hardware to adjustable pullout pantry shelves to residential style full extension ball bearing drawer guides.

**SONY® ENTERTAINMENT CENTER.**

Ventana's living space features a Sony® LCD TV and DVD player with Surround Sound System and sub woofer so you can truly enjoy home entertainment. With designer day/night pleated window shades, you can create just the right theater setting for your viewing. Let the show begin!

\*Lounge configuration varies based on floorplan.



KITCHEN

## NO DETAIL WAS TOO SMALL TO CONSIDER FOR YOUR VENTANA KITCHEN.

This kitchen is solid – from its stainless appliances to its polished Corian® countertop to its hand glazed solid maple cabinets. And slightly higher base cabinets to alleviate back pain from bending over the counter. It's top shelf all the way. Choose an optional residential French style 3-door stainless refrigerator with pull-out freezer for effortless entertaining.



BACKSPLASH

### TOP

Ventana's kitchen features a newly designed Corian® backsplash with a diagonal grid of glass and tile inserts in earth tone, adding visual richness to the main coach.

### RIGHT

With an expandable polished Corian® dinette with built-in storage and buffet shelf, dinner is a snap. A hidden leaf even creates seating for four.



DINING





BEDROOM ENTERTAINMENT

#### BEDROOM.

Keep things neat yet still within reach with Ventana's king size bed with radius corners and wraparound storage cabinets – plus storage in both end tables.

#### BEDROOM ENTERTAINMENT.

You get a second Sony® flatscreen TV entertainment system in the bedroom surrounded by built in hardwood cabinetry. It's even better than at home!



BEDROOM

#### BATHROOM.

To make your daily routines anything but routine, Ventana's bathroom includes polished porcelain flooring, a roomy standup shower, Corian® countertop with an integrated bowl and contrasting accent edge. Its hardwood cabinetry (shown here in Silverado Maple) includes triple medicine cabinets.



BATHROOM



Napa



Mysteria



Sonoma



Empire/Manhattan Glazed Maple



Monteray/Silverado Glazed Maple



HEADLIGHTS



EXTERNAL ENTERTAINMENT CENTER

### OUTDOOR ENTERTAINMENT.

An optional 32" Sony® LCD TV external entertainment center stows into Ventana's storage compartment. Or if you choose an optional 40" version, it stows into Ventana's sidewall.

#### CHASSIS FEATURES

- Freightliner Chassis
- Cummins ISB 360 HP with engine exhaust brake on 34ft floorplans
- Cummins ISC 380 HP with two stage compression brake on 40-43ft floorplans
- Accuride Accu-Shield™ Aluminum Wheels
- Electric Leveling Jacks with Automatic Control on 34ft floorplans
- Hydraulic Leveling Jacks with Single Touch Control on 40-43ft floorplans
- Cruise Control
- Comfort Drive™ Steering With Adjustable Control
- Manual Tilt and Telescope Steering Column with VIP Smart Wheel
- Recessed Fuel Fills with Crossover to Fill from Either Side
- Back-Up Alarm
- Anti-Lock Braking System

#### AIR CONDITIONING & HEATING

- Two 13.5M Penguin™ Heat Pump Central Air Conditioners
- Propane Furnace with In-Floor Ducted Heat\*
- Hydronic Zone Heating System with Continuous Hot Water on 43ft Floorplans
- Dash Heater & High-Output Air Conditioner
- Propane Leak Detector
- Wall Mounted Sensors for Heating and Air Conditioning

#### APPLIANCES & ACCESSORIES

- 30" Convection Microwave Oven
- Three-burner Cooktop with Piezo Ignition
- Polished Corian Range Cover
- Norcold 10 Cu. Ft. Refrigerator
- 10 gal. Gas/Electric Water Heater with Direct-Spark Ignition\*
- One-Piece Compact Washer/

#### Dryer Prep \*

- Sony® LCD TV and DVD Player in Living and Bedroom Areas\*
- Sony® 32" LCD TV in Bedroom
- AM/FM Dash Radio with MP3 Adapter and CD Player
- Sony® Surround Sound System with Sub Woofer
- Rearview Color Monitor System
- Roof Mounted Digital TV Antenna with Power Booster
- Air Horns

#### CABINETS & FURNITURE

- Empire Maple Cabinets with Raised Panel Glazed Doors
- Polished Corian Countertop in Kitchen with Undermounted Acrylic Sink and Flush Sink Covers
- Corian Countertop in Bathroom with Integrated Sink
- Corian Countertops on Nightstands and Chest of Drawers
- Adjustable Pullout Pantry Shelves\*
- Residential Style Full Extension Ball Bearing Drawer Guides
- Flexsteel Ultralux Leather Furniture
- Ultralux Leather Driver/Passenger Seats with Six-Way Power, Power Lumbar, Ergo-Flex Arms
- Ultralux Leather Loveseat with Footrest\*
- King Bed with Quilted Bedspread, and Accent Pillow\*
- Built in Booth Dinette with Drawers\*

#### ELECTRICAL FEATURES

- 8.0 kW Cummins Onan Diesel Quiet Series Generator
- 50 Amp Electrical Service with Flexible Cord
- Four 6 Volt House Batteries on Pullout Tray
- Battery Disconnect Switch
- 110 Volt Exterior Receptacle
- 5 Watt Solar Panel

- 2000 Watt Inverter
- Emergency Start Switch
- Exterior Security Light on Doorside
- Midship Side Turn Signals
- Fluorescent Lights in Ceiling and Overhead Cabinets
- Slideout Information Voice Module
- Manually Operated Hold-To-Run Slideout Switch
- ICC Light Flasher Switch
- 12 Volt Auxiliary Receptacle on Dashboard
- Exterior TV Jack
- Interior Courtesy Lights

#### EXTERIOR FEATURES

- Full-Paint Masterpiece Finish™ with Front Protective Film
- One-piece Bonded Windshield
- Convex Exterior Mirrors with Remote Control, Defrost and Turn Signals
- Entrance Door with Automatic Double Step
- Power Flush Stepwell Cover
- Lighted Exterior Storage Compartments with Cargo Liner, Controlled by Interior Master Switch
- Rear Hitch for Towing Car with Two Extra 14 Gauge Wires
- Lighted Assist Handle at Entrance Door
- Mud Flaps
- Rear Protective Full-width Tow Guard
- Rear Ladder
- Undercoating

#### INTERIOR FEATURES

- Padded Vinyl Ceiling
- Day/Night Pleated Window Shades & Lambrequins
- Mini Blinds in Bathroom
- Porcelain Tile Floor in Kitchen, Bathroom and Living Area
- Deluxe Carpeting in Living Room and Bedroom

- Day/Night Privacy Shades on Driver/Passenger Side Windows
- Power Sun Shades and Manual Night Shades for Windshield

#### PLUMBING & BATH FEATURES

- Demand Water System with SHURflo® Pump
- Sewage Holding-Tank Rinse
- Water Heater Bypass System\*
- Thetford™ Aqua Magic Plus China Stool\*
- Monitor Panel
- Water Filter with Drink Dispenser at Kitchen Sink
- Water Filter for Entire Unit

#### CONSTRUCTION FEATURES

- BriteTEK™ Roof with 9MM Decking
- Gelcoated Fiberglass Exterior Sides
- Gelcoated Fiberglass Front and Rear Caps
- Aluminum-Frame Sidewalls & Roof Construction, 16" on Center
- 5/8" Foam Insulation Laminated in Sidewalls & Ceiling

#### WINDOWS, AWNINGS, & VENTS

- Double-Pane Tinted Safety-Glass Windows
- Fan-Tastic Vent with Rain Sensor in Kitchen and Bathroom Areas
- Skylight in Bathroom\*
- A & E 9000 Side Awning
- A & E Oasis Manual Front Entrance Door Awning
- A & E Slideout Awning Covers
- Cockpit Overhead Ventilation System

#### OPTIONS

##### AIR CONDITIONING & HEATING

- Hydronic Zone Propane Heating System\*
- 3-15M Penguin Heat Pump Air Conditioner and Energy Management System\*

##### APPLIANCES & ACCESSORIES

- Norcold 12 Cu. Ft. Four-Door Refrigerator with Icemaker\*
- Maytag Stainless Steel Residential Refrigerator with Icemaker and Water Dispenser, includes 2800 Watt Pure Sine Inverter & 2 Extra Batteries
- One-Piece Washer/Dryer \*
- Two-Piece Washer/Dryer\*
- Sirius Satellite Radio Capability (Does not include monthly subscription)
- Sony 32" LCD TV in Front Overhead\*
- External Entertainment Center in Sidewall with Sony 40" LCD TV\*

##### RAISED PANEL GLAZED DOORS

- Manhattan Maple Cabinets with Raised Panel Glazed Doors
- Silverado Maple Cabinets with Raised Panel Glazed Doors
- Hide-A-Bed Sofa with Air Mattress\*
- Hidden Leaf Dinette Table With Four Chairs and Larger Dinette Window\*
- Round Hardwood Dinette Table with Four Fixed Chairs and Larger Dinette Window \*
- Sleep Number® Deluxe Air Mattress
- Power Footrest on Passenger Seat
- Combination Desk/Dinette Table with Two Fixed Chairs and Two Folding Chairs\*
- Ultralux Leather Recliners\*

##### ELECTRICAL FEATURES

- Energy Management System

##### EXTERIOR FEATURES

- Large Chrome Exterior Mirrors
- Large Storage Tray with Access from One Side or Either Side \*

##### INTERIOR FEATURES

- Halogen Lighting
- Floor Tile Extended into Bedroom Area

##### PLUMBING & BATH FEATURES

- 110 Volt Heat Pads for Holding Tanks
- Bathtub\*

##### WINDOWS, AWNINGS, & VENTS

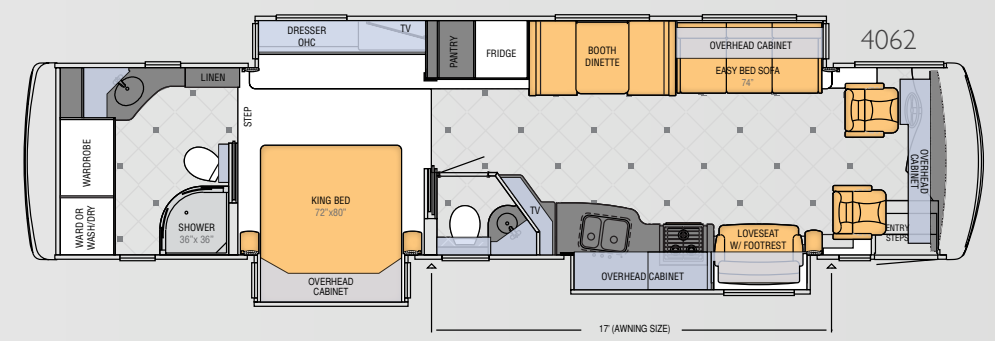
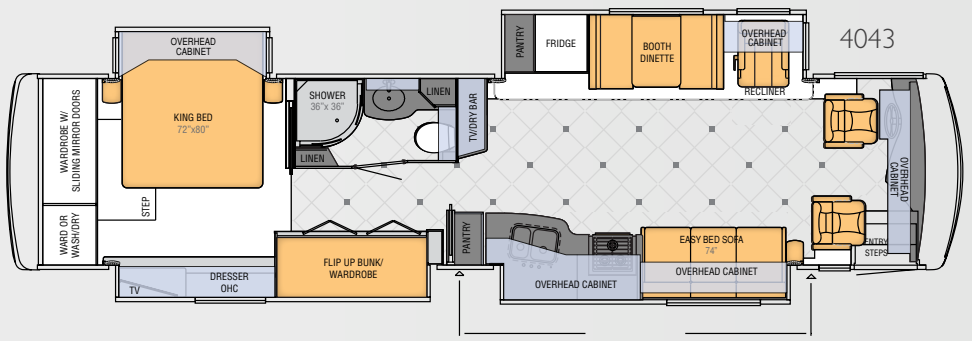
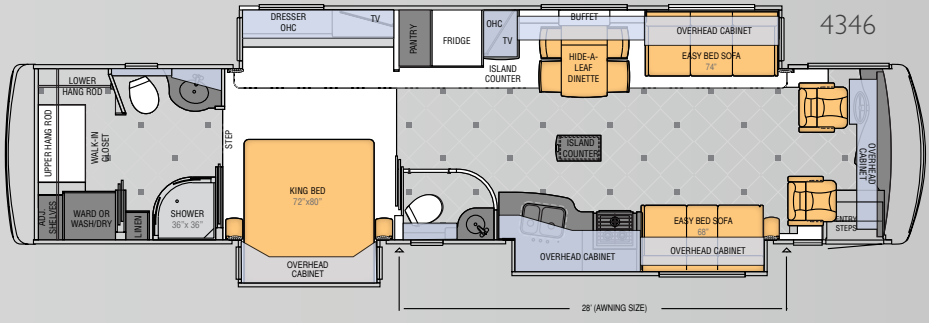
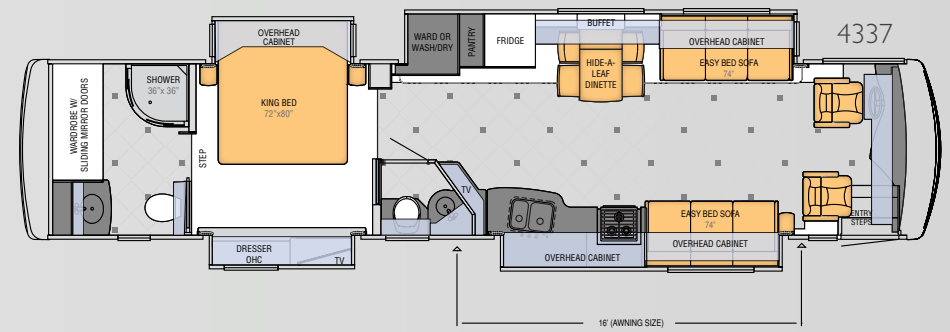
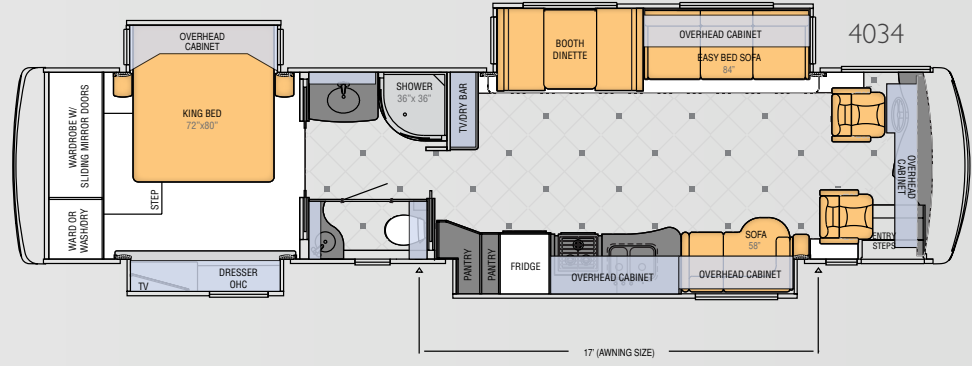
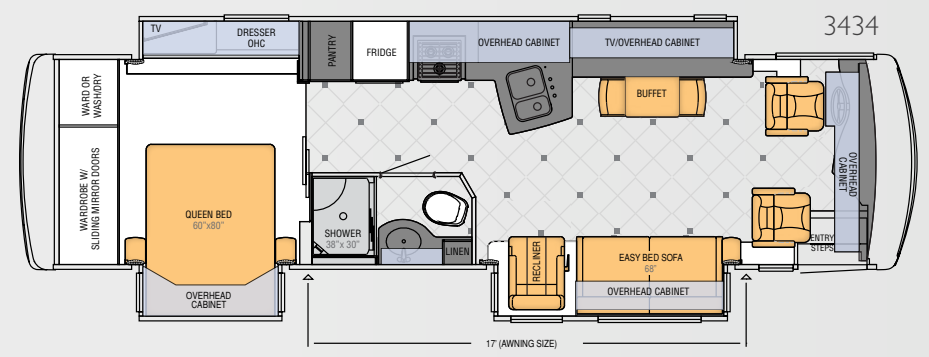
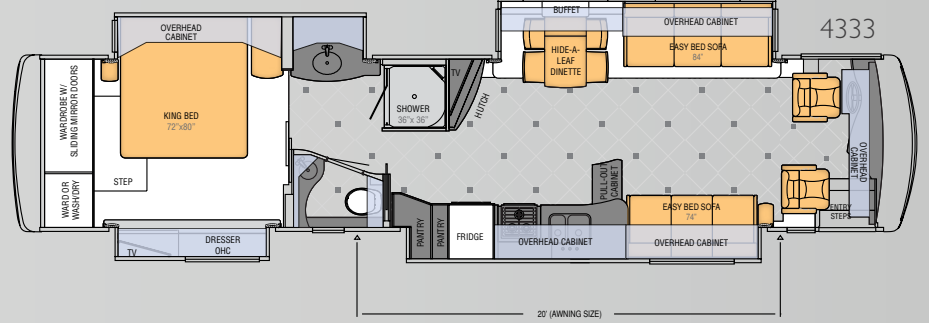
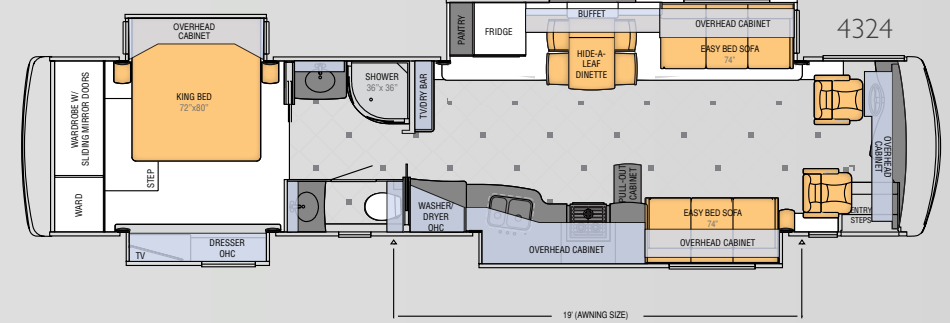
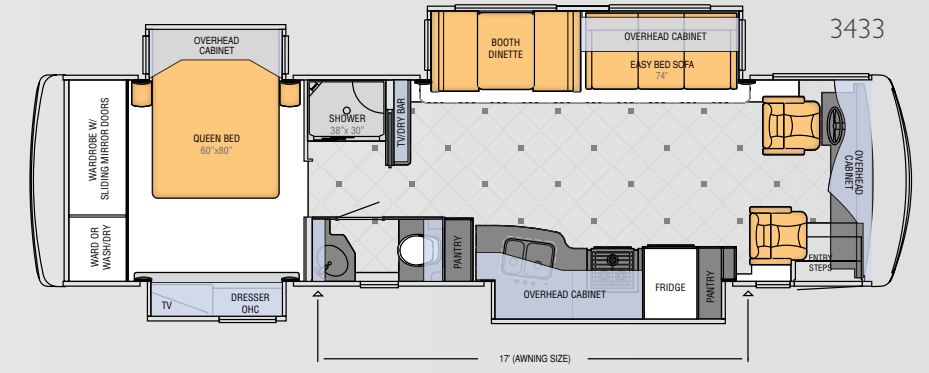
- A & E 9000 Bedroom & Slideout Window Awning
- A & E Weather Pro Side Awning & Oasis Power Front Entrance Door Awning
- Bunk Windows
- Kitchen Window

##### CABINETS & FURNITURE

- Queen Bed
- Monterey Maple Cabinets with

\*Check with dealership on floor plan availability and complete listing of features.

Ventana's nine floorplans offer you a multitude of choices. Its 4062 floorplan offers a bath and a half with a roomy private master bath at the rear. Its 3434 floorplan features a wraparound kitchen near the buffet dinette. The 3433, 4324 and 4333 offer a split bathroom and a private aft bedroom.



VENTANA FLOOR PLAN SPECIFICATIONS

Floor Plan	App. Overall Length	Width	App. Overall Height	Interior Width	Interior Height	Grey	Sewage	Water	Propane	Furnace
3433	34' 10"	101.5"	12' 05"	95.5"	84"	65 gal.	45 gal.	105 gal.	32 gal.	35,000 btu
3434	34' 10"	101.5"	12' 05"	95.5"	84"	65 gal.	45 gal.	105 gal.	32 gal.	35,000 btu
4034	40' 10"	101.5"	12' 08"	95.5"	84"	65 gal.	45 gal.	105 gal.	32 gal.	40,000 btu
4043	40' 10"	101.5"	12' 08"	95.5"	84"	65 gal.	45 gal.	105 gal.	32 gal.	40,000 btu
4062	40' 10"	101.5"	12' 08"	95.5"	84"	65 gal.	45 gal.	105 gal.	32 gal.	40,000 btu
4324	42' 10"	101.5"	12' 08"	95.5"	84"	65 gal.	45 gal.	105 gal.	32 gal.	50,000 btu
4333	42' 10"	101.5"	12' 08"	95.5"	84"	65 gal.	45 gal.	105 gal.	32 gal.	50,000 btu
4337	42' 10"	101.5"	12' 08"	95.5"	84"	65 gal.	45 gal.	105 gal.	32 gal.	50,000 btu
4346	42' 10"	101.5"	12' 08"	95.5"	84"	65 gal.	45 gal.	105 gal.	32 gal.	50,000 btu

Like a fine home, Ventana is framed 16 inches on center, allowing the best placement of outlets, switches and other components. Newmar uses only Sikaflex elastic adhesive throughout Ventana's construction – one of the strongest bonding agents available. It seals against air and water and helps dampen sound and vibration. Electrical wiring holes in Ventana's aluminum frame are ringed with plastic grommets to protect wires from chafing. And Newmar's Total Comfort™ Central Air is two separate, fully ducted systems that distribute cool air and remove warm air.

\*check with dealership on floorplan availability



- ROOF R-VALUE = 19**
    - a. BriteTEK™ Roof (optional one-piece fiberglass roof)
    - b. 9mm Wood Decking
    - c. Fiberglass Batten Insulation
    - d. A/C Ducting
    - e. Aluminum Roof Truss
    - f. Kraft Paper Vapor Barrier
    - g. 5/8" Bead Foam
    - h. 3/16" Panel
    - i. Padded Vinyl Overlay
  - FLOOR R-VALUE = 16**
    - q. Carpet/Tile
    - r. Carpet Padding
    - s. 5/8" Floor Decking
    - t. Fiberglass Batten Insulation
    - u. 2" x 3" Wood Framing
    - v. Polyethylene Moisture Barrier
    - w. Foam Panels (Noise Protection)
    - x. Aluminum Ducting/mrier
  - SIDEWALL R-VALUE = 11**
    - j. 3/16" Plywood Interior Wall
    - k. 5/8" Bead Foam
    - l. Kraft Paper Vapor Barrier
    - m. Fiberglass Batten Insulation
    - n. 3/16" Plywood Exterior Wall
    - o. Composite One-piece Gelcoat Exterior Sidewall
    - p. 1 1/2" On-center Aluminum Framing with 3 1/2" Header
  - BASEMENT R-VALUE = 4**
    - y. Cargo Liner
    - z. 3/8" Floor Decking
    - aa. 3/16" Luan Panel
    - bb. 1 1/2" Bead Foam
    - cc. Aluminum Sheeting (Prevents Distortion)
1. 13.5M Penguin™ Heat Pump Central Air Conditioners (2)
  2. One-piece Windshield
  3. Coated Aluminum Wheels
  4. Double-pane Tinted Safety-glass Windows
  5. Side-hinged Baggage Doors with Optional Pullout Tray



**VENTANA LE**

**CHASSIS SPECIFICATIONS**

Floor Plan	Engine HP	Axle Ratio	Fuel Cap.	Wheelbase	Front GAWR*	Rear GAWR*	Tag GAWR*	GVWR*	GCWR*	App. UVW	App. NCC
3634	340	4.63	100 gal.	228"	12,000 lb.	19,000 lb.	0	31,000 lb.	33,000 lb.	24,800 lb.	6,200 lb.
3843	340	4.63	100 gal.	252"	12,000 lb.	19,000 lb.	0	31,000 lb.	33,000 lb.	25,600 lb.	5,400 lb.
3862	340	4.63	100 gal.	252"	12,000 lb.	19,000 lb.	0	31,000 lb.	33,000 lb.	25,000 lb.	6,000 lb.

**VENTANA**

**CHASSIS SPECIFICATIONS**

Floor Plan	Engine HP	Axle Ratio	Fuel Cap.	Wheelbase	Front GAWR*	Rear GAWR*	Tag GAWR*	GVWR*	GCWR*	App. UVW	App. NCC
3433	360	4.63	100 gal.	206	12,000 lb.	20,000 lb.	0	32,000 lb.	42,000 lb.	25,000 lb.	7,000 lb.
3434	360	4.63	100 gal.	206	12,000 lb.	20,000 lb.	0	32,000 lb.	42,000 lb.	25,600 lb.	6,400 lb.
4034	380	4.63	100 gal.	245+TAG	14,000 lb.	20,000 lb.	10,000 lb.	44,000 lb.	54,000 lb.	30,000 lb.	14,000 lb.
4043	380	4.63	100 gal.	245+TAG	14,000 lb.	20,000 lb.	10,000 lb.	44,000 lb.	54,000 lb.	30,500 lb.	13,500 lb.
4062	380	4.63	100 gal.	245+TAG	14,000 lb.	20,000 lb.	10,000 lb.	44,000 lb.	54,000 lb.	30,500 lb.	13,500 lb.
4324	380	4.63	100 gal.	269+TAG	14,000 lb.	20,000 lb.	10,000 lb.	44,000 lb.	54,000 lb.	31,500 lb.	12,500 lb.
4333	380	4.63	100 gal.	269+TAG	14,000 lb.	20,000 lb.	10,000 lb.	44,000 lb.	54,000 lb.	31,500 lb.	12,500 lb.
4337	380	4.63	100 gal.	269+TAG	14,000 lb.	20,000 lb.	10,000 lb.	44,000 lb.	54,000 lb.	32,000 lb.	12,000 lb.
4346	380	4.63	100 gal.	269+TAG	14,000 lb.	20,000 lb.	10,000 lb.	44,000 lb.	54,000 lb.	32,500 lb.	11,500 lb.

Lengths, heights, widths and dry weights are approximate. Weight will vary based on optional equipment added to the above base weight.

**GAWR:** Gross Axle Weight Rating is the maximum permissible weight for an axle.

**GVWR:** Gross Vehicle Weight Rating is the maximum permissible weight for a fully loaded motor coach.

**GCWR:** Gross Combination Weight Rating is the value specified by the manufacturer of the vehicle as the maximum allowable loaded weight of this motor coach and any towed trailer or towed vehicle.

**UVW:** Unloaded Vehicle Weight is the weight of this motorcoach as built at the factory with full fuel, engine oil and coolants. The UVW does not include cargo, fresh water, propane gas or dealer-installed accessories.

**NCC:** Net Carrying Capacity is the maximum weight of all occupants, including the driver, personal belongings, food, fresh water, waste water, propane gas, tools, tongue weight of towed vehicle, dealer-installed accessories, etc., that can be carried by the motorcoach.

\*Specifications supplied by the chassis manufacturer.



Mahlon Miller, Newmar founder, and his wife, Irene  
Matthew Miller, Newmar president, and his wife, Pam

The quiet, energetic farm town of Nappanee, Indiana is home to Newmar's owners, the Miller family. They are actively engaged in its operations, embracing employees, suppliers, dealers and customers as part of the Newmar family. The family has grown since 1968 but continues to strive for faithfulness to the tenets of its founders, including a strong community, bearing burdens for others, forgiveness, fairness, honesty, integrity, and peace with one's neighbors.



WHEN YOU KNOW THE DIFFERENCE™

**NEWMAR CORPORATION**  
355 N DELAWARE ST  
PO BOX 30  
NAPPANEE IN 46550-0030  
574-773-7791 Fax 574-773-2895

[www.newmarcorp.com](http://www.newmarcorp.com)

**THE NEWMAR KOUNTRY KLUB** is an exclusive club for owners of fine Newmar products that offers many advantages and benefits to its members. Learn more at: [www.newmarkountryklub.com](http://www.newmarkountryklub.com).

**ESTABLISHED OVER 40 YEARS AGO**, Newmar is an innovator and leader in the RV manufacturing industry. Its quality craftsmanship is recognized nationally. The Newmar dealer network spans across the United States and Canada.

Call 1-800-860-0086 to be our guest for a factory tour.

(Please affix dealer stamp in this area.)

### NEWMAR EXPRESS LIMITED WARRANTY

Every Ventana LE & Ventana Diesel Motor Couch is backed by Newmar's one-year limited warranty/unlimited miles. Ask your Newmar dealer for details.

### LIMITED FIVE-YEAR STRUCTURAL WARRANTY

If any part of your Newmar recreational vehicle superstructure (which is the steel/aluminum structure of the sidewall, roof or frame) fails to perform properly within five years from the date of purchase because of faulty workmanship or material supplied by Newmar, it will be repaired without charge for either parts or labor by Newmar. This structural warranty is available only to the original purchaser and is non-transferable.

Some features in our literature are optional. Colors and finishes are photographic representations. The actual materials may look different. Prices, specifications and floorplans are subject to change at Newmar's discretion, without prior notice or obligation. Please see your dealer for actual samples and specifications.