

AVENGER

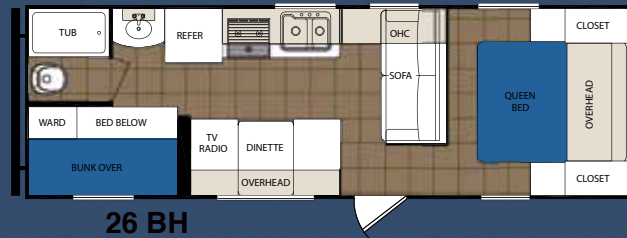
by PRIME TIME Mfg.



23 FBS

Length - TBD
Base Weight - TBD
Carrying Capacity - TBD

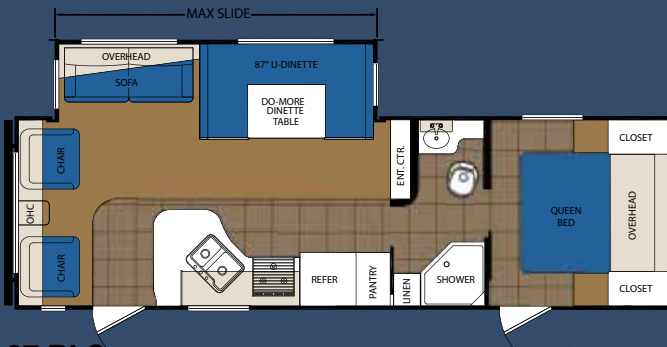
Height - TBD
Hitch - TBD



26 BH

Length - 28' 11"
Base Weight - 5,046 lbs.
Carrying Capacity - 2,558 lbs.

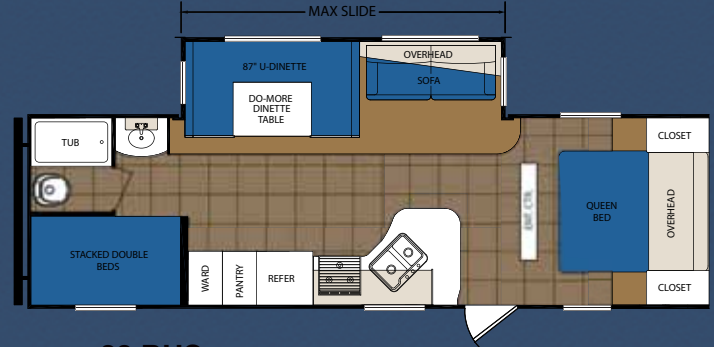
Height - 10' 4"
Hitch - 642 lbs.



27 RLS

Length - 31' 1"
Base Weight - 6,237 lbs.
Carrying Capacity - 3,261 lbs.

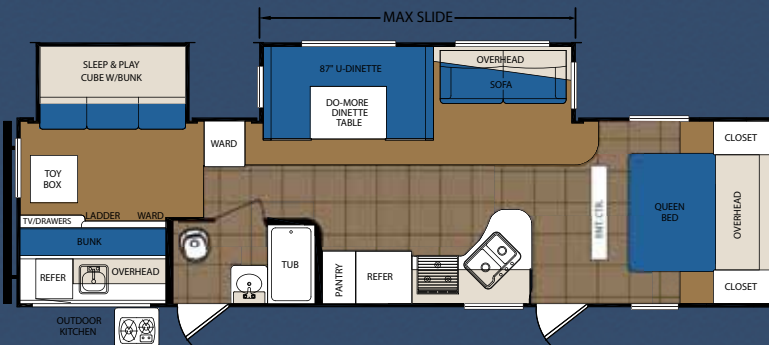
Height - 11' 1"
Hitch - 736 lbs.



28 BHS

Length - TBD
Base Weight - TBD
Carrying Capacity - TBD

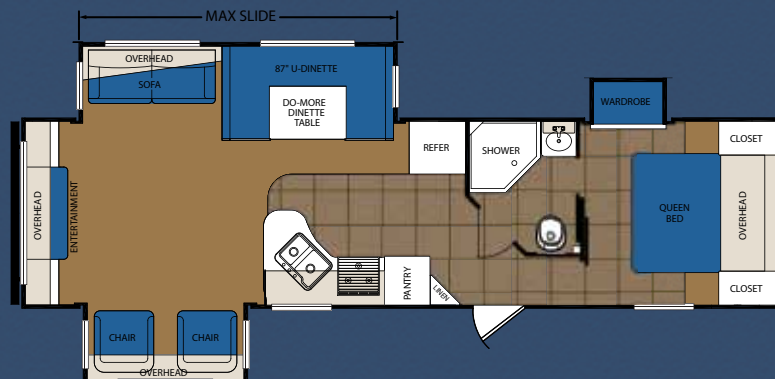
Height - TBD
Hitch - TBD



32 BHS

Length - TBD
Base Weight - TBD
Carrying Capacity - TBD

Height - TBD
Hitch - TBD



32 RES

Length - TBD
Base Weight - TBD
Carrying Capacity - TBD

Height - TBD
Hitch - TBD

North America's *Fastest-Growing* RV Company



CONSTRUCTION

- Cambered Structural Steel I-Beam Frame
- 8' Exterior Width
- R-7 Insulation Throughout
- 2x3 Floor Joist on 16" Centers
- 5/8" Seamless Floor Decking with 25 Year Warranty
- 5" Snow Load Roof Rafters on 16" Centers
- Walk-On Roof with 3/8" Roof Decking
- One Piece Rubber Roof
- PEX Plumbing System
- Upgraded Oetiker Water Line Fittings
- **THERMAL PACKAGE PLUS**
 - Enclosed Underbelly
 - Heated Holding Tanks
 - Extended Season Enjoyment
- **EVERLAST CONSTRUCTION**
 - 2x2 Wall Studs on 16" Centers
 - Cross Banded Construction
 - Seal Tight Technology

EXTERIOR STANDARDS

- Large Patio Awning
- "Super Lube" Grease-able Axle Hubs
- 4 Stabilizer Jacks
- Extended Drip Spouts
- Black Framed Radius Windows with Deep Tint
- DOT Approved Safety Glass Windows
- Fully Vented Windows Throughout
- Dual LP Bottles with Easy Access Cover
- City Water Fill
- Gravity Fresh Tank Fill
- Color Coordinated Front Diamond Rock Guard
- Marine Grade Outdoor Speakers
- Outside Shower
- Radius Entrance Door
- Patio Light with Inside Light Switch
- Bumper with Sewer Hose Storage and End Caps
- Entry Door Grab Handle

APPLIANCES and EQUIPMENT

- Exterior TV Coax Connection
- Exterior TV Bracket
- Cable TV Hook-Up w/RG6 Coax
- Digital TV Antenna W/Signal Booster
- AM/FM CD Radio
- 13,500 BTU Air Conditioner
- 3 Burner Range with High Output Front Burner
- Large Oven
- Range Hood with Light and Exhaust Fan
- Microwave with Carousel
- Large Double Door Refrigerator
- 6 Gallon Gas/Electric Water Heater
- Direct Spark Ignition on Water Heater
- 18 Gal//HR Quick Recovery Mode for Water Heater
- Water Heater Bypass
- EZ Winterization Hookup
- High Capacity Furnace
- In Floor Ducted Heat
- Auto Ignition Furnace with Wall Thermostat
- Systems Monitor Panel
- 12V Electrical System w/45-Amp Power Converter
- 110V GFCI Protected
- 12V High Capacity Water Pump
- 30 AMP Power

KITCHEN

- Deep Double Bowl 60/40 Sink
- High Rise Kitchen Faucet
- Spice Rack Valance
- Spice Rack Storage Under Sink
- Pot and Pan Drawer Under Stove
- Pot and Pan Drawer Under Refrigerator

INTERIOR STANDARDS

- Oversized MAX Slide (Where Applicable)
- Massive 87" U-Shaped Dinette on MAX Slide Models
- "Do More" Dinette Table (MAX Slide Models)
- Deep Overhead Cabinets in MAX Slide
- Fully Vented Windows in MAX Slide Outs
- Deep Overhead Cabinets in MAX Slide
- Pleated Shades in Living and Dining Room (N/A 26BH)
- Mini Blinds in Living and Dining Room (26BH Only)
- Predrilled and Screwed Cherry Finish Cabinetry
- Solid Wood Core Cabinets
- Extended Ball Bearing Drawer Glides
- Designer Sofa
- Residential Grade Carpet in Select Areas
- Armstrong "Tough Guard" Premium Vinyl Flooring
 - Fully Glued Application
 - 5 Year Wear Warranty

BEDROOM

- "Evergreen" Select Foam Mattress
- Quilted Residential Bed Spread
- Quilted Foam Bunk Matts (Where Applicable)
- Bedroom TV Cable Connection
- Dual Shirt Closets (Most Models)
- Massive Under Bed Storage
- Bed Platform Prop for Ease of Access
- Extra Large Overhead Cabinets Above Bed

BATHROOM

- Shower Curtain with Curved Track
- Glass Neo Angle Shower (Select Models)
- 12V Power Vent Fan
- Medicine Cabinet with Mirror
- Skylight Over Tub
- Tub Surround

SAFETY EQUIPMENT/OWNER PROTECTION

- CO Detector
- LP Detector
- Fire Extinguisher
- Smoke Alarm
- Dual Hitch Safety Chains
- Coach-Net 24HR Roadside Assistance
- Leak-Guard Process

POPULAR OPTIONS

- 15,000 BTU Air Conditioner
- Free Standing Dinette and Four Chairs
- LCD Television
- DVD Player
- Air HAB Sofa
- Spare Tire
- Privacy Wall with Wood Sliding Door (26BH Only)
- Outdoor Kitchen with Swing Arm (Mandatory on 32BHS)

2011 DSI QUALITY CIRCLE AWARD WINNER

Prime Time Manufacturing is proud to be recognized as an industry leader in value, reliability, and overall quality by the Recreational Vehicle Dealers Association. This was accomplished by committing ourselves to Design, Durability, Detail and Dependable Customer Service. We invite you to join the family of satisfied Prime Time RV Owners.



Seal Tech Air Pressure Test



Executive Quality Audits



Rain Bay



Seek-A-Leak Pressure Test



65 Point Secondary PDI



Web Based Customer Service



Advanced Engineering

Coach-Net®

RV TECHNICAL & ROADSIDE ASSISTANCE



Follow Us On
Facebook



Learn More

Scan this barcode using a QR Reader on your smart phone to learn more about Forest River.



A Berkshire Hathaway company.