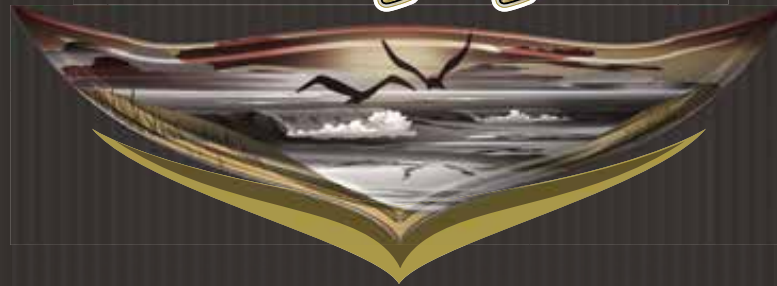


# *Sandpiper*



LUXURY FIFTH WHEELS



# 35ROK

T R A V E L   A N Y W H E R E

sandpiper 01



35ROK SHALESTONE INTERIOR.



The 35ROK leaves nothing out when it comes to entertainment. Whether you're inside enjoying the abundant seating in the living area with standard fireplace and entertainment center, cooking up some fun in the kitchen with tons of storage and countertop extension found in the kitchen island or taking the party outdoors where a large LED HD TV flips down over the exterior kitchen for the big game, this model illustrates Sandpiper's commitment to having fun.





# 365SAQ

T R A V E L A N Y W H E R E

sandpiper 03



365SAQ SADDLE INTERIOR. SHOWN WITH OPTIONAL PARTY COUCH.



Whether your travels take you to the mountains or the forest, Sandpiper ensures that your stay will be one filled with comfort and style. The kitchen offers all of the modern appliances you need to entertain your family while the slide out dinette provides the extra room necessary to enjoy the meal. And with four interior options to choose from, you can really make any model the one you want.





# 366FL

T R A V E L   A N Y W H E R E

sandpiper 05



366FL DESIGNER INTERIOR. SHOWN WITH OPTIONAL THEATER SEATING.

Attention to detail and craftsmanship throughout are what make the Sandpiper such a unique recreational vehicle. The 366FL is a perfect example of this. With its wrought iron package including upgraded light fixtures, clock and picture frames, this model is sure to become a timeless classic. Coupled with the smart looks of those fixtures, the Sandpiper also offers a warm and inviting fireplace and entertainment center to help complete the look of home you want on the road.





# 346RET

T R A V E L   A N Y W H E R E



sandpiper 07

346RET KAHLUA INTERIOR.



Treat yourself to the luxury of the Sandpiper 346RET fifth wheel. This model includes all of the comforts of home while visiting your favorite destinations. Upgraded materials and elegant touches such as the living room fireplace, handcrafted facia and La-Z-Boy leather recliners create rich and luxurious living on the road. Whether you are going for a weekend or an extended stay, the 346RET will always provide you with comfort.





# 376BHOK

T R A V E L A N Y W H E R E

sandpiper 09



376BHOK SADDLE INTERIOR WITH OPTIONAL WOOD REFER INSERT.



Let your journey begin with the Sandpiper 376BHOK. You will own the view of your destination with the large deluxe windows found throughout while enjoying the spacious room for relaxing around the party dinette. The bunk room offers more privacy with its own bathroom and the color tiled surround shower/tub make a design splash giving the 376BHOK a modern look. And with the standard outside kitchen, this model gives you everything you need for your next trip.

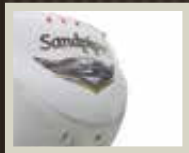




Sandpiper's unique exterior kitchen brings the joys of camp cooking to the outdoors where it truly belongs. Sandpiper's exterior kitchen offers a very modern look with its use of L.E.D. lights and rich water resistant cabinetry to store everything needed to prepare the perfect meal while still enjoying the wonders of nature. Rain or shine Sandpiper's outdoor kitchen turns cooking into something extraordinary rather than ordinary.







Standard Cap



Optional Paint

## S A N D P I P E R C O N S T R U C T I O N

- |   |   |   |
|---|---|---|
| A. ROLLED ALUMINUM SIDED SKIRTING             | H. SEAMLESS RUBBER ROOF (12 YR. WARRANTY)       | P. POWER FRONT JACKS WITH QUICK RELEASE SNAP PINS |
| B. TINTED SAFETY GLASS WINDOWS (80%)          | I. BLOCK FOAM INSULATION                        | Q. SLEEK RADIUS ROOF                              |
| C. DUCTED 15K BTU AIR CONDITIONING            | J. 28 OZ. CARPET WITH PADDING                   | R. HIGH GLOSS GEL-COATED FIBERGLASS EXTERIOR      |
| D. AL-KO AXLES WITH AUTO ADJUST BRAKES        | K. 3/8" ROOF DECKING (FULL WALK-ON ROOF)        | S. HIGH GLOSS GEL-COAT CAP (STANDARD)             |
| E. LAMINATED VACUUM BONDED ALUMINUM SIDEWALLS | L. 5/8" TONGUE AND GROOVE FLOORING              | T. IMPROVED FRONT CAP FOR SHARPER TURNING RADIUS  |
| F. E-RATED RADIAL TIRES                       | M. ENCLOSED HEATED UNDERBELLY                   |   |
| G. HICKORY SPRINGS™ RADIUS ENTRY STEPS        | N. I-BEAM POWDER-COATED FRAME W/ RUST INHIBITOR |   |
|   | O. ALUMINUM LAMINATED BATH DECK                 |   |



# E X T E R I O R F E A T U R E S



110v outlet and cable outlet conveniently located in the pass-thru storage area.



Sandpiper's convenient lighted outside docking station.



Heated and enclosed underbelly protects your coach and improved airflow allows for a sturdier ride.



Sandpiper's command center allows you to monitor tanks and other systems quickly and easily.



Wide stance power front jacks with quick release snap pins. (Optional hydraulic shown)



Contemporary aluminum rims with E-rated radial tires.



Optional under mount exterior storage bin keeps commonly used items close at hand.



Insulated heavy duty Slam Lock keeps commonly used items close at hand.



Gel coat fiberglass protects from UV rays and prevents yellowing and cracking.



Drip rail with extra long drip spouts that help prevent black streaking.



2 quick connect spray ports (one on each side) are great for easy clean up.



# I N T E R I O R F E A T U R E S



Handcrafted fascia gives the slide-out a distinguished look.



Serta™ memory foam mattress is a Forest River exclusive feature.



Jensen AM/FM CD/DVD stereo comes standard in the Sandpiper.



Contemporary light fixtures in bathroom.



Contemporary ceiling fan.



Kitchen drawers with full extension ball bearing drawer glides.



Enjoy the warmth and comfort of the electric fireplace.



Raised panel cabinet doors with crowned molding found in the kitchen.



Cargo net in bunk area for storing extra gear.



Relax in comfort in a La-Z-Boy.



Optional theater seating.

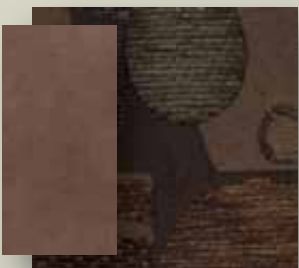


Porcelain foot flush toilet, easy to use, easy to clean.

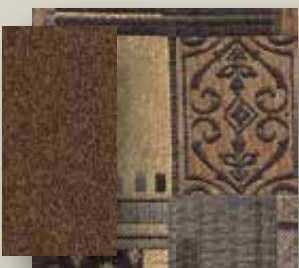




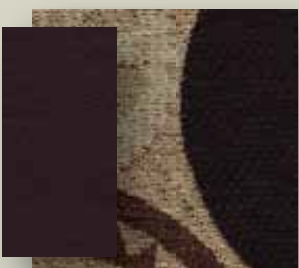
**KAHLUA INTERIOR**



**DESIGNER INTERIOR**



**SHALESTONE INTERIOR**



**SADDLE INTERIOR**

**EXTERIOR FEATURES**

- Gel coated exterior fiberglass
- Aerodynamic fiberglass front cap with improved turning radius
- Docking station: easy winterization, hot and cold spray port, black tank flush, pull valves for tanks
- Enclosed and heated dump valves
- Large tinted windows with 80/20 UV prohibitor
- Alko auto adjust brakes
- Hickory Springs™ radius triple steps with 9" riser (no pinched fingers)
- Dometic™ "One-Touch" electric awning with adjustable arms
- Awning light recept w/ interior switch
- Power front jacks with spring loaded snap pins
- 16" Radial tires-E Rated
- Automotive-style fender skirts
- Hitch light
- Exterior refrigerator (per floorplan)
- Porch light with interior switch
- Patio recreation light with interior switch
- 30 lb. double LP tanks with auto change over
- Roof ladder
- 2 exterior speakers
- Rain gutters with extra long drip spouts (prevents black streaking)
- Insulated heavy duty slamlock baggage doors
- Exterior foldable grab handle
- Unobstructed pass-through storage area with cable jacks and 110V outlet
- 2 spray ports with 25' hose (one on each side)
- Upgraded aluminum rims

**INTERIOR FEATURES**

- 84" interior height with 6'4" slide heights
- Beauflor® wood plank linoleum
- Leather La-Z-Boy® swivel rocker recliners
- Four color coordinated interiors (Designer, Saddle, Kahlua, Shalestone)
- Full extension ball bearing drawer glides
- Stone cast under mounted kitchen sink
- Washer/dryer prep (select floorplans)
- Handmade cabinetry with screwed lumber core stile construction and chrome hardware
- Wine rack above refer
- Self edged residential countertops
- Dual zone A/C prep (living room and bedroom)
- Recessed residential lighting
- Colored shower surround
- Upgraded adjustable shower head with shelf
- Accent paneling in slideouts
- Accent lighting over dinette
- Walk-in shower (select models)
- Crown molding over kitchen cabinets

- Extra large picture windows throughout
- Vented side windows in slideouts
- TV antenna with booster
- Surround sound TV hook-up
- Solid wood drawer fronts with birch sides
- Upgraded raised panel cabinet doors with designer rails
- Bedroom slideout fascia
- Serta® memory foam mattress
- Neo-angle shower with glass door (where available)
- Jensen® 32" flat screen LED/HD TV
- Jensen® AM/FM CD/DVD and bluetooth player with MP3 capabilities
- Home theater surround sound system
- Designer window treatment accented per decor
- Residential black panel refer door insert
- Ceiling fan
- Trifold hide-a-bed sofa
- Residential carpeting
- Center mounted A/C unit for even cooling
- Quilted bedspread
- Shower surround with etched tile pattern
- Wrought iron package
- Trash receptacle in kitchen

**APPLIANCES/SYSTEMS**

- Ducted Dometic® 15K A/C with quick cool
- Thermostat for living room and bedroom A/C
- Floor ducted 35,000 BTU furnace
- Three burner high output range with 22" oven
- 8 cubic ft. double door refrigerator
- Interior monitor panel for holding tanks
- Flush floor hydraulic slideouts (per floorplan)
- Satelite and cable hookup with RG-6 cable for high quality picture
- Porcelain foot flush toilets
- Full coach water filtration system
- 10 Gal. DSI water heater
- 65 Amp converter
- Fantastic fan in bath

**CONSTRUCTION**

- Welded aluminum-framed, vacuum bonded laminated superstructure
- Laminated and fully insulated bathroom floor deck
- 2" x 3" floor joists 12" on center
- 5/8" tongue & groove plywood floor decking
- 3/8" roof decking (full walk-on roof)
- Cambered powder coated frame with rust prohibitor
- Fully enclosed heated underbelly
- 5" truss roof rafters
- R-10E sidewall construction

**POPULAR OPTIONS**

- Hydraulic front jacks on 5th wheels
- King bed (where available)
- Painted front cap
- Corian® countertops in kitchen
- Free-standing dinette with 4 chairs
- Washer and dryer (per floorplan)
- Sofa IPO bottom bunk (per floorplan)
- Second air conditioner-bedroom
- Fantastic fan with power hood operated with wall switch
- 12 Volt heated holding tanks
- Equaflex™ equalizer system
- Under mount storage box
- Party couch dinette
- Beauflor® tile pattern linoleum
- Central vacuum

**FOR YOUR SAFETY**

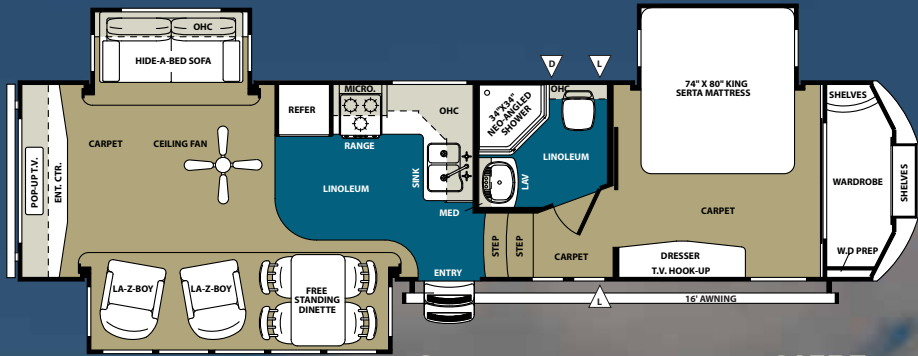
- Smoke alarm
- Fire extinguisher
- Breakaway switch (battery hook-up required)
- Dead-bolt lock on entry door
- Liquid propane (LP) gas detector
- Fire escape windows

**SANDPIPER SIGNATURE PACKAGE**

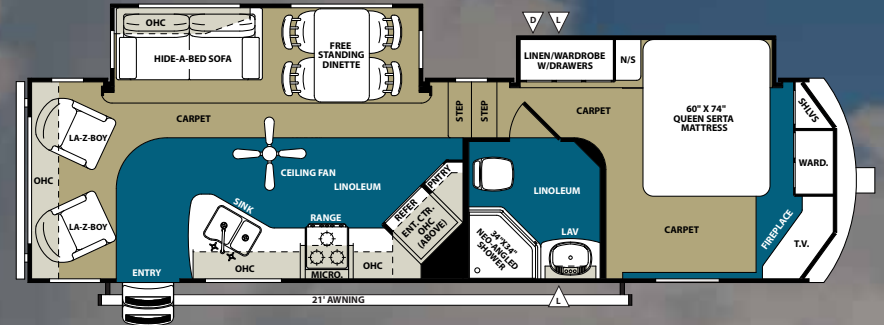
- High gloss gel coated exterior fiberglass
- Fiberglass front cap
- Serta® memory foam mattress
- Docking Station
- Awning light recept with interior switch
- Jensen® 32" flat screen LED/HD TV
- Jensen® AM/FM CD/DVD player with MP3 capabilities
- La-Z-Boy swivel rocker recliners (where applicable)
- 10,000 gal. water filtration system
- Fantastic fan in bath
- Residential pullout kitchen faucet
- 15K BTU air conditioner
- Wire and brace for 2nd A/C (ducted)
- Spare tire kit
- 10 gal. G/E DSI water heater
- Upgraded aluminum rims
- Wood plank Beauflor® linoleum flooring
- Washer dryer prep
- Tri-fold hide-a-bed
- "One-touch" Dometic® electric awning



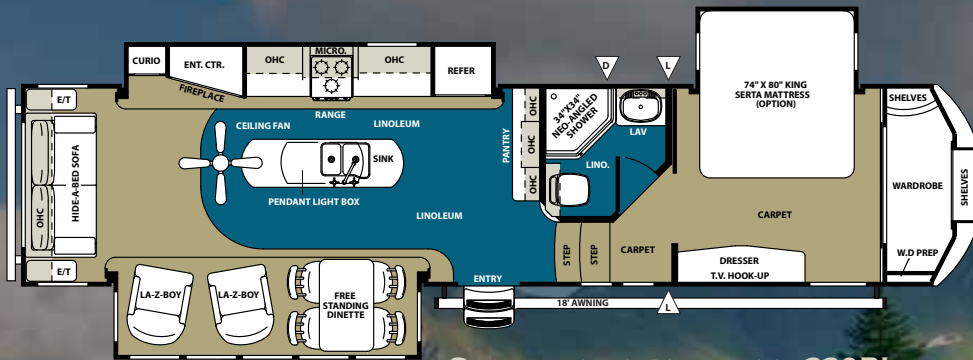
# SANDPIPER FLOOR PLANS



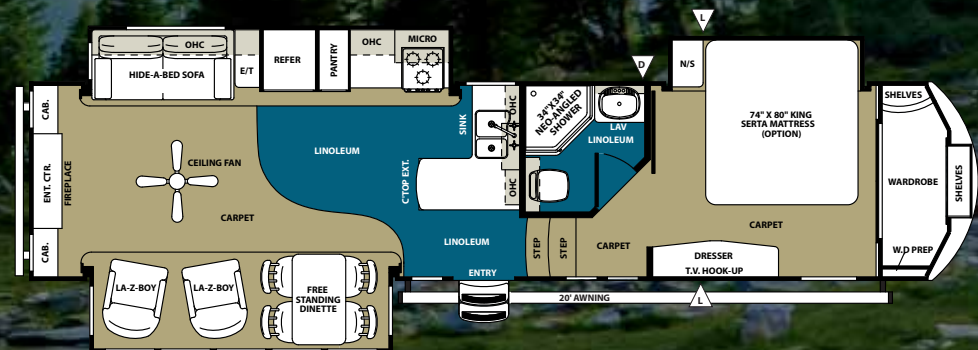
**SANDPIPER FIFTH WHEEL 315RE**  
Length: 35'9" Height: 13'2"



**SANDPIPER FIFTH WHEEL 320RL**  
Length: 33'9" Height: 13'



**SANDPIPER FIFTH WHEEL 330RL**  
Length: 38'9" Height: 13'1"



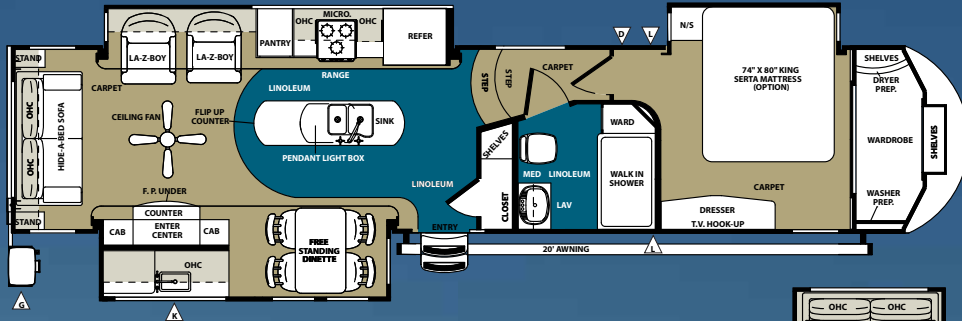
**SANDPIPER FIFTH WHEEL 346RET**  
Length: 38'5" Height: 13'2"

MODEL	315RE	320RL	330RL	346RET
HITCH WEIGHT	2,160	1,575	2,354	1,946
SHIP WEIGHT	9,850	9,082	10,887	10,284
LENGTH	35'9"	33'9"	38'9"	38'5"
HEIGHT	13'2"	13'	13'1"	13'2"
AWNING SIZE	16'	21'	16'	20'
GRAY TANK (CAP)	108	108	89	108
BLACK TANK (CAP)	54	54	54	54
FRESH TANK (CAP)	55	55	55	55

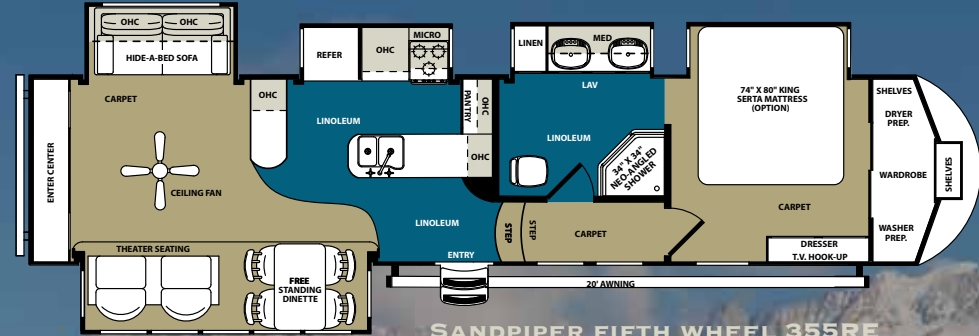
D: DOCKING STATION ACCESS L: LARGE PASS-THRU STORAGE



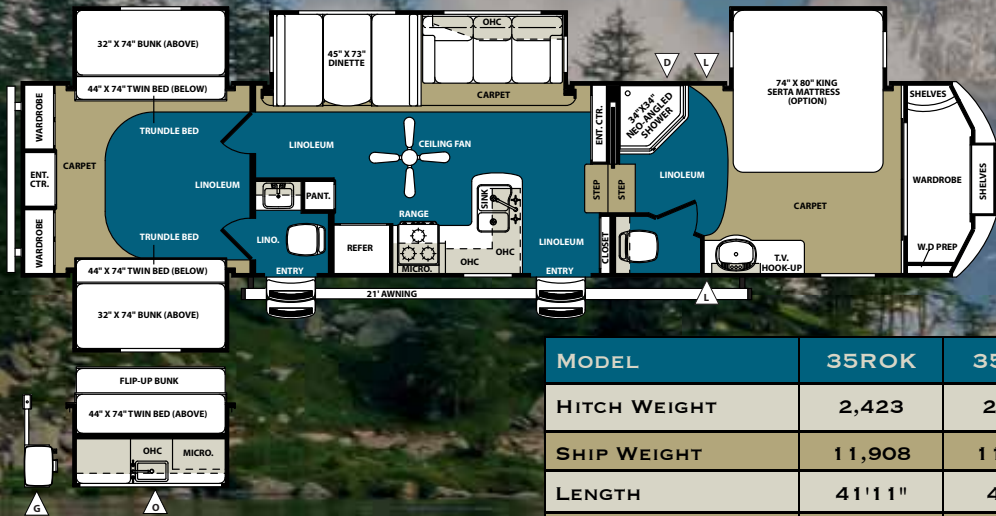
# SANDPIPER FLOOR PLANS



**SANDPIPER FIFTH WHEEL 35ROK**  
Length: 41'11" Height: 13'2"



**SANDPIPER FIFTH WHEEL 355RE**  
Length: TBD Height: TBD

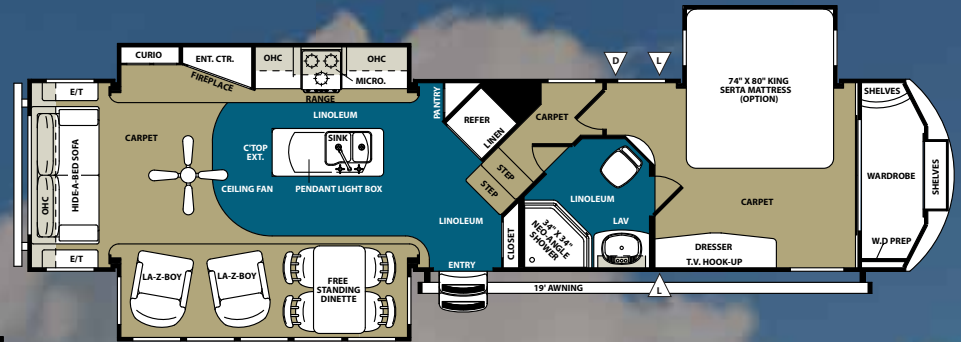


**SANDPIPER FIFTH WHEEL 355QBQ**  
Length: 39'5" Height: 12'10"

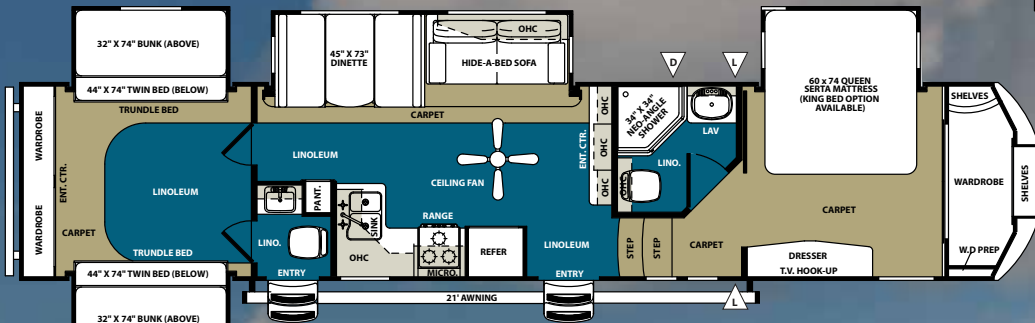
MODEL	35ROK	355RE	355QBQ	356RL	365SAQ	366FL	376BHOK
HITCH WEIGHT	2,423	2,150	1,923	2,154	2,060	2,292	2180
SHIP WEIGHT	11,908	11,838	11,185	10,959	11,873	11,198	12,610
LENGTH	41'11"	40'9"	39'5"	40'9"	41'7"	40'1"	43'
HEIGHT	13'2"	13'0"	13'0"	12'10"	13'0"	13'2"	13'2"
AWNING SIZE	19'	20'	21'	18'	21'	21'	16'
GRAY TANK (CAP)	108	88	108	108	108	54	108
BLACK TANK (CAP)	54	54	108	54	108	54	108
FRESH TANK (CAP)	55	55	55	55	55	55	55



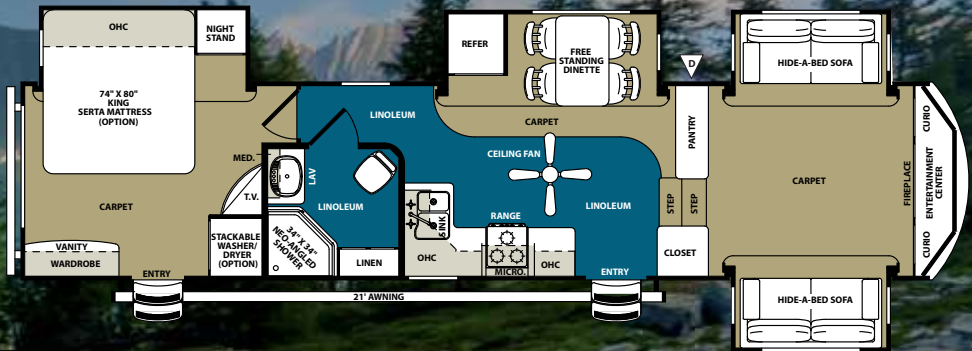
# SANDPIPER FLOOR PLANS



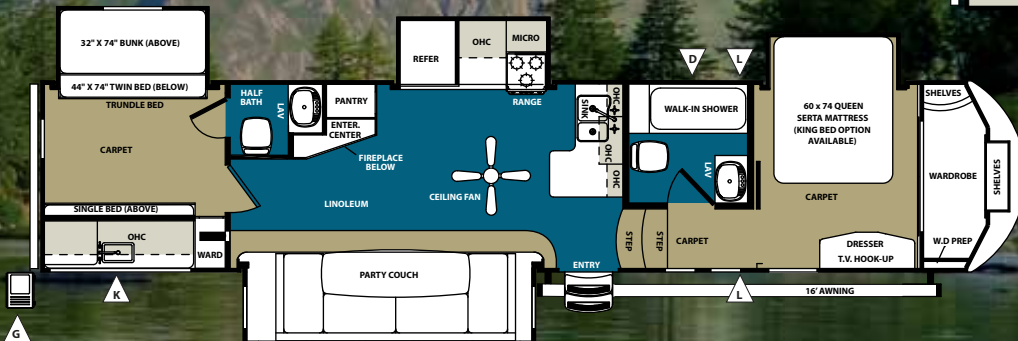
**SANDPIPER FIFTH WHEEL 356RL**  
Length: 40'9" Height: 12'10"



**SANDPIPER FIFTH WHEEL 365SAQ**  
Length: 41'7" Height: 13'



**SANDPIPER FIFTH WHEEL 366FL**  
Length: 40'1" Height: 13'2"



**SANDPIPER FIFTH WHEEL 376BHOK**  
Length: 43' Height: 13'2"

D: DOCKING STATION ACCESS L: LARGE PASS-THRU STORAGE K: EXTERIOR KITCHEN  
G: BUMPER MOUNT SWIVEL GAS GRILL O: OPTIONAL EXTERIOR KITCHEN





Forest River, Inc. encourages our customers to purchase their Forest River products from a local dealership whenever possible for the following reasons:

- 1) Forest River, Inc. dealers are independently owned and operated businesses so priority service and scheduling is at their discretion and is often provided to customers that purchased their unit at that dealership.
- 2) Purchasing locally allows customers to establish meaningful relationships with a dealer, enhancing the RV experience through assistance with product questions, user tips or RV regulations for your state or country, and much more!
- 3) Canadian customers must meet requirements to bring an RV purchased out of the country to their home. These requirements may involve additional inspections and certifications, taxes and fees. Your local Canadian Dealer is a professional at meeting these requirements.
- 4) Scheduling timely warranty repairs and adjustments through a local dealership provides far greater flexibility and convenience to you, the customer!

It is the goal of Forest River, Inc. that all of our RV owners fully enjoy the RV experience and that customer satisfaction meets or exceeds their expectations!



FIFTH WHEELS



**PRE-DELIVERY INSPECTION FACILITY**

20,000 square feet of quality assurance. The bare essentials for a premium product. This state-of-the-art facility gives immediate daily feedback to production for quality assurance in every unit built.

**24/7 EMERGENCY ROADSIDE ASSISTANCE**

For a worry-free ownership experience Forest River includes one

**Coach-Net<sup>®</sup>**

RV Technical & Roadside Assistance

year of Coach-Net RV Technical & Roadside Assistance with each RV purchase. Whether new to the RV lifestyle or an experienced RV enthusiast, Forest River owners have 24/7 access to technical, operational and emergency road service coverage throughout the US & Canada. Coach-Net's fast, dependable service is just a phone call away.

**FREE MEMBERSHIP**  
to Forest River Owners' Group

[www.forestriverfrog.com](http://www.forestriverfrog.com)



**Learn More**

Scan this barcode using a QR Reader on your smart phone to learn more about Forest River.



A Berkshire Hathaway company.

**YOUR SANDPIPER DEALER**

Forest River, Inc.  
2012 Century Dr.  
Goshen, IN 46528  
574-389-4600  
[www.forestriverinc.com/sandpiper](http://www.forestriverinc.com/sandpiper)  
[www.forestriveraccessories.com](http://www.forestriveraccessories.com)