



ULTRA POSH DIESEL CLASS A COACH

# TUSCANY XTE

MANUFACTURED BY THOR MOTOR COACH

MORE INFO AT:  [TUSCANYRV.COM/XTE](http://TUSCANYRV.COM/XTE)







ULTRA POSH DIESEL CLASS A COACH  
**TUSCANY XTE**  
MANUFACTURED BY THOR MOTOR COACH  
MORE INFO AT: [TUSCANYRV.COM/XTE](http://TUSCANYRV.COM/XTE)

THERE IS NO COMPETITION TO A TUSCANY XTE WHEN IT COMES TO LUXURY AND SOPHISTICATION. EVEN MORE SO IN ITS PRICE CATEGORY. YOU WILL ENJOY A COMBINATION OF HIGH-END LUXURY AMENITIES AND ELEGANT AUTOMOTIVE DESIGN. POWER-PACKED FEATURES.



DESIGNED AND BACKED BY THE INDUSTRY LEADER. WITH TUSCANY XTE, THEY'LL KNOW YOU HAVE ARRIVED.



Vanilla Bean Full Body exterior paint



ULTRA POSH DIESEL CLASS A COACH

# TUSCANY XTE

MANUFACTURED BY THOR MOTOR COACH

MORE INFO AT: [TUSCANYRV.COM/XTE](http://TUSCANYRV.COM/XTE)

*A combination of high-end amenities and elegant automotive design make the TuscanY XTE the very best. One look and you'll agree, contemporary decor and old world craftsmanship set TuscanY XTE apart from other Class A diesels.*



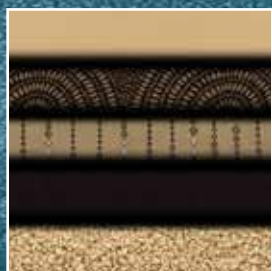
40EX with Toasted Almond interior and Vintage Maple cabinetry



OLYMPIC CHERRY



VINTAGE MAPLE



KONA BEAN



SAND CASTLE



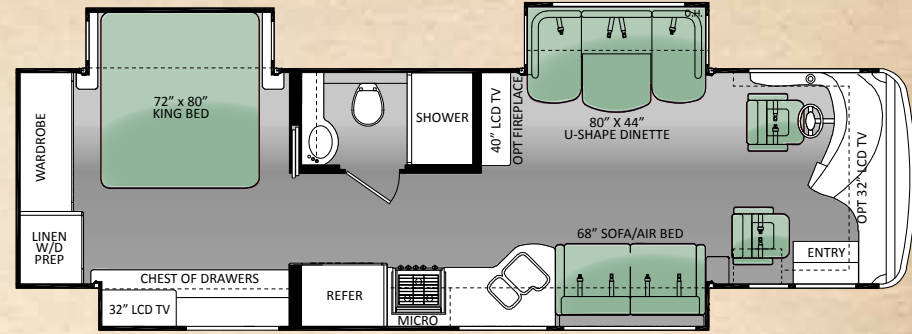
TOASTED ALMOND





## 34ST

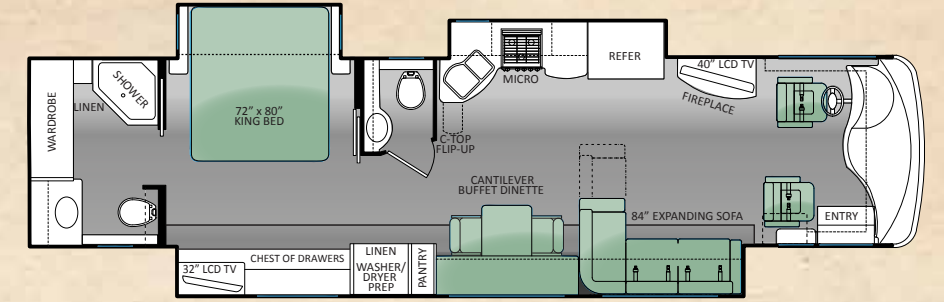
Chassis	Freightliner XC
Gross Vehicle Weight Rating (GVWR)	32,400
Gross Combined Weight Rating (GCWR)	42,400
Wheel Base	208"
Exterior Length (without ladder)	35'-0"
Exterior Height (with air conditioning)	12'-8"
Exterior Width (without mirrors)	101"
Interior Height	85"
Awning Size	13'
Fuel (gallons)	100
LPG (pounds)	126
Fresh / Waste / Grey Water (gal)	91 / 51 / 51
Water Heater (gal)	10
Furnace (BTUs)	2 (20,000)
Exterior Storage Capacity (cubic feet)	140



34ST

## 40EX

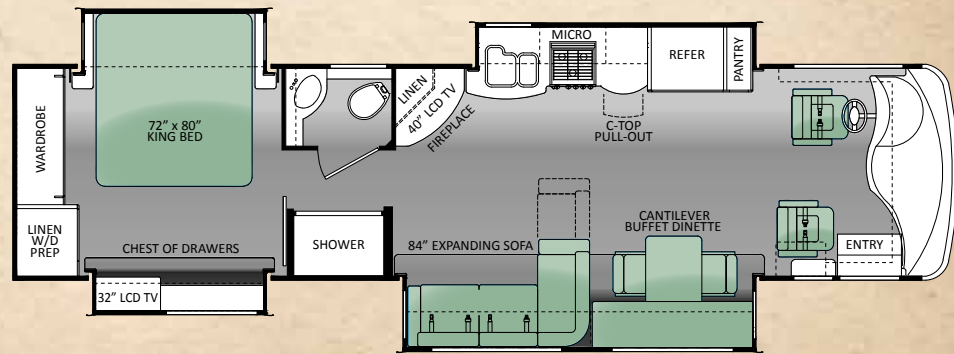
Chassis	Freightliner XC
Gross Vehicle Weight Rating (GVWR)	32,400
Gross Combined Weight Rating (GCWR)	42,400
Wheel Base	266"
Exterior Length (without ladder)	39'-10"
Exterior Height (with air conditioning)	12'-8"
Exterior Width (without mirrors)	101"
Interior Height	85"
Awning Size	16'-5"
Fuel (gallons)	100
LPG (pounds)	126
Fresh / Waste / Grey Water (gal)	91 / 51 / 51
Water Heater (gal)	10
Furnace (BTUs)	2 (20,000)
Exterior Storage Capacity (cubic feet)	215



40EX

## 36MQ

Chassis	Freightliner XC
Gross Vehicle Weight Rating (GVWR)	32,400
Gross Combined Weight Rating (GCWR)	42,400
Wheel Base	236"
Exterior Length (without ladder)	37'-4"
Exterior Height (with air conditioning)	12'-8"
Exterior Width (without mirrors)	101"
Interior Height	85"
Awning Size	13'
Fuel (gallons)	100
LPG (pounds)	126
Fresh / Waste / Grey Water (gal)	91 / 51 / 51
Water Heater (gal)	10
Furnace (BTUs)	2 (20,000)
Exterior Storage Capacity (cubic feet)	185



36MQ



36MQ Kitchen and Entertainment Center



Stackable Washer and Dryer



36MQ Bedroom Storage

## IT'S WHAT YOU DON'T SEE THAT MATTERS.

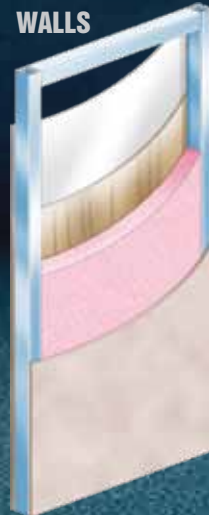
CHASSIS: Freightliner XC Raised Rail Chassis with Cummins ISB-XT engines, 160-amp, 12-volt Alternator, In-Block, 1,000 Watt Engine Heater, 6-Speed Allison MH-3000 Automatic Transmission, 22.5" Radial Tires with Aluminum Wheels, Full Air Brakes, Air-Ride Suspension, Haldex Purest Air Plus Heated Air Dryer, Meritor Anti-Lock Brakes, Sachs Shock Absorbers, 10,000 lb Trailer Hitch, Fully Automatic 4 Point Levelling Jacks and more.



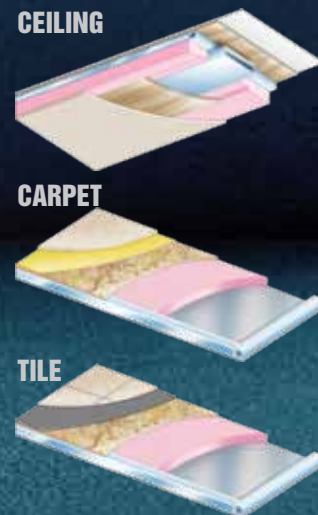
### CONSTRUCTION:

Walls feature an interior panel, 1-1/2" block foam insulation, luan backer, exterior fiberglass and aluminum frame tubing. Ceilings are padded, feature luan wood, have AC ducting, roof membrane is TPO material, insulated and aluminum tube framed. Floors feature carpet, porcelain tile, structure wood floor base, block foam laminated to weather resistant underbelly and steel rugged steel frame. All Thor Motor Coaches are built to higher standards, specifications and quality materials.

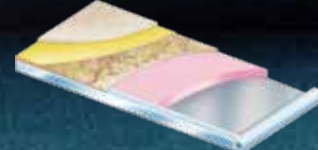
### WALLS



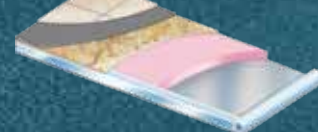
### CEILING



### CARPET



### TILE



AUTUMN RIDGE FULL BODY PAINT



SEDONA FULL BODY PAINT



STEEL GREY FULL BODY PAINT



VANILLA BEAN FULL BODY PAINT

IMPORTANT—PLEASE READ: Information published within this brochure reflects product design, fabrication, material, components and specifications at the date of printing. If your vehicle was manufactured before this brochure was published this information may not be accurate because vehicles assembled before the brochure was published may not have the same design, fabrication, materials, components and specification as represented in the brochure. If your vehicle was manufactured after this sales brochure was published the representations may not be accurate because, for product improvement reasons, we reserve the unilateral right, at any time, without prior notice, to make changes in product design, material, components and specifications. The date the brochure was published (i.e. "Julian date") is set forth on the last page of the brochure. IF CERTAIN INFORMATION PUBLISHED WITHIN THIS BROCHURE IS SIGNIFICANT TO YOUR PURCHASING DECISION, PLEASE CONSULT WITH YOUR SELLING DEALERSHIP TO CONFIRM THAT THE INFORMATION IS ACCURATE WITH RESPECT TO THE VEHICLE YOU ARE CONSIDERING PURCHASING. Photographs in the brochure may depict optional equipment or may only be available in certain floor plans. We reserve the right to make changes in prices and models and to discontinue models without notice or obligation. Components, appliances and the chassis may have been manufactured in a calendar year before the vehicle's designated model year. All capacities are approximate. The actual length of the vehicle may differ from that indicated in the brochure due to variances in the manufacturing processes and/or installed components. All dry weights are based on standard model features and do not include optional features or equipment. Components, appliances and features may differ to conform to local codes. Due to EPA environmental restrictions, engine power and torque ratings may change during any model year. The Thor Motor Coach logo and its design are registered trademarks. Other products and company names are trademarks and/or registered trademarks of their respective manufacturer. While the color of the motorhome's exterior and the interior fabrics depicted in this brochure are fair and reasonable depictions, the colors depicted may not be exact match of the actual colors because of variances in photo processing and printing. Component part and appliance manufacturers issue limited warranties covering portions of the vehicle not covered under the limited warranty we issue. To learn specific details regarding warranty coverage please consult your selling dealership or review the warranty packet inside the vehicle.



# STANDARD FEATURES AND OPTIONS

## CHASSIS

- Freightliner XC Raised Rail Chassis
- Cummins ISB-XT 360-hp Engine with 800 ft lb of Torque
- 6 Speed Allison MH -3000 Automatic Transmission
- 22.5" Radial Tires with Aluminum Wheels
- Full Air Brakes
- Air-Ride Suspension
- Exhaust Brake
- Under-Hood Light
- Dual Fuel Fills
- Emergency Start Circuit
- Full Width Stainless Stone Guard with Tuscany XTE Emblem
- 10,000 lb Trailer Hitch
- Automatic Hydraulic 4-Point Leveling Jacks

## CONSTRUCTION & EXTERIOR

- Fiberglass Front and Rear Caps
- Tinted One Piece Windshield
- Black Framed Dual Pane Windows
- Full Body Paint with Gel Coat Wall
- Invisible Bra
- Electric Entry Door Awning
- Lateral Arm Electric Patio Awning
- Slide Out Topper Awnings
- Fog Lights
- Full Basement
- Fiberglass Basement Storage Compartments
- Pass-Through Storage
- Easy Slide Storage Tray

- Side-Hinged Locking Aluminum Compartment Doors
- Rear Ladder

## AUTOMOTIVE & COCKPIT

- Electric Windshield Day / Night Privacy Shade
- Manual Side Day/Night Privacy Shades
- 6 Way Power Ultra Leather Reclining Driver and Passenger Seats
- Driver and Passenger Overhead Storage Cabinetry
- Front Mount Power Mirrors with Heat & Integrated Side View Camera System
- Back-up Monitor System with Audio
- Premium AM /FM Radio with In-Dash CD Player
- Electronic Cruise Control
- Air Horn
- Dash Fans
- Electric Step Cover

## MULTIMEDIA

- 40" High Definition LCD Television in Living Area
- 32" High Definition LCD Television in Bedroom
- Surround Sound Home Theater with Blu-Ray
- Satellite Dish Prep

## MULTIMEDIA OPTIONS

- 32" High Definition LCD Television in Cockpit Overhead
- 32" High Definition LCD Television in Exterior Entertainment Center
- In-Motion Satellite Dish (HD Capable with Dish Network)

## INTERIOR

- Solid Wood Raised Panel Cabinet Doors Throughout
- Solid Surface Kitchen Countertop, Range Cover, Sink Covers and Lavatory Countertop
- Tile Kitchen Backsplash
- Day / Night Roller Shades in Living Area & Bedroom
- Porcelain Tile Throughout
- Halogen Lighting Throughout
- Ultra Leather Furniture
- Cantilever Buffet with Computer Workstation and Two Chairs
- Two Folding Chairs
- King Bed with Pillow Top Mattress
- Bedspread with Throw Pillows
- Living Room Fireplace (N/A 34ST)

## INTERIOR OPTIONS

- Ultra Leather Sofa/Air Bed on Passenger Side (N/A 34ST)

## KITCHEN

- Stainless Steel Residential Refrigerator with In-Door Ice & Water Dispenser
- 3-Burner Cooktop
- 30" Over-the-Range Convection Microwave Oven
- Single Lever Faucet with Sprayer

## KITCHEN OPTION

- 12-volt 4-Door Stainless Steel Refrigerator with Ice Maker (N/A 34ST)

## ELECTRICAL & PLUMBING

- Dual 13.5K BTU Ducted Central Air Conditioning with Heat Pumps
- Fantastic® Power Vent in Kitchen
- (2) 20,000 BTU Ducted Electronic Ignition Furnace
- 50-AMP, 120-volt Service
- Onan RV QD 8000 Diesel Generator
- Auto Generator Start
- 2000-watt inverter / 100-amp Converter
- (4) 6-volt Auxiliary House Batteries
- Battery Disconnect
- Energy Management System
- Carbon Monoxide, Propane & Smoke Detectors
- Monitor Panel with Propane Readout
- 10-gallon Gas/Electric Water Heater with Electric Ignition
- Water Heater By-Pass Kit
- Stackable Washer and Dryer Prep
- Full Height shower with Door
- Skylight in Shower
- Foot Flush Porcelain Toilet with Sprayer
- Enclosed Heated Potable and Holding Tanks
- Black Tank Flush
- E-Z Flow Water Panel with Whole-House Water Filtration
- Exterior Shower

## ELECTRICAL & PLUMBING OPTION

- Stacking Washer and Dryer



YOUR LOCAL TMC DEALER:



Go RVing.



BOX 1486 • ELKHART, IN 46515 • CUSTOMER SERVICE: 800-860-3812 • SALES DEPARTMENT: 800-860-5658 • [TUSCANYRV.COM/XTE](http://TUSCANYRV.COM/XTE)



COPYRIGHT THOR MOTOR COACH, INC. © 2012