

2013

Tour



CLICK TO NAVIGATE

[Overview](#)

[Lounge](#)

[Dining](#)

[Bathroom](#)

[Exterior](#)

[Chassis](#)

[Interior Décor](#)

[Specifications](#)

[Warranty](#)

[Features](#)

[Galley](#)

[Bedroom](#)

[Cab](#)

[SuperStructure](#)

[Floorplans](#)

[Paint](#)

[WIT Club](#)



On the cover: 42GD Polished Pewter Full-Body Paint

42QD Vino with Coffee-Glazed Vienna Maple Cabinetry

Have It All

The Winnebago Tour® is everything a luxury diesel pusher coach should be: spacious, visually stunning, loaded with features and built on the industry's best chassis. Featuring a 450-hp Cummins® diesel engine and an incredible amount of pass-through storage, the Maxum® tag-axle chassis with lowered-rail construction is the foundation for amazing journeys. The popular 42QD returns for 2013, along with the all-new 42GD quad slide with a mid-coach 55" LCD TV. Glazed hardwood cabinetry, porcelain tile flooring and Corian® countertops surround you in elegance and, because the entire coach is made to Winnebago Industries'® legendary quality standards, you know the components you can't see are just as impressive as those you can. You can even choose the convenience of an "all electric" coach with features such as an induction cooktop that replaces the need for LP. This year, choose the "all amazing" Winnebago Tour.

Why Tour?

- Unmatched performance of Maxum Chassis
- Two 42' floorplans
- Polished porcelain tile floors
- Aqua-Hot® zone heating
- Premier clearcoat automotive finish
- HDMI 4X4 Matrix offers HD input to all TVs
- MCD American Duo® solar/blackout roller shades
- Powered king bed with Ideal Rest® Natural Reserve digital comfort control mattress
- Available Flexsteel® cab seats with heat/massage
- Available All Electric Coach with induction range top



Recognized Quality The RV Dealers Association bestows its annual Quality Circle Award based on dealer ratings to the manufacturers that provide exceptional products, service and support. Only one manufacturer has received this honor for sixteen consecutive years: Winnebago Industries.®

Best in Class

See how Winnebago Industries takes motor home design and function to the next level, and why we've earned the right to be called the Most Recognized Name in Motor Homes.®

Click on this icon throughout the brochure to link to more information on the web.



Open Wide Drawers open wide on *Full-Extension Drawer Slides* for maximum storage and easy access.



Clean Sweep Keep your Tour looking new with the *Dirt Devil® Central Vacuum*.



E-Power Eliminate the need for LP with the fast-heating *Induction Stove*, available with the All Electric Coach package.



Night and Day The smoothly retracting *MCD American Duo Solar/Blackout Roller Shades* let you control your light and privacy—no matter the time of day.



Easy Important gauges, switches and controls are all centrally located in the *OnePlace® Systems Center*.

Best in Class

See how Winnebago Industries takes motor home design and function to the next level, and why we've earned the right to be called the Most Recognized Name in Motor Homes.®

Click on this icon throughout the brochure to link to more information on the web.



Infotainment The available *Infotainment Center/GPS* has it all: CD player, MP3 input, outside temp, compass, turn-by-turn voice navigation and so much more.




Laundry to Go Keep your clothes fresh and clean wherever you are when you add the stackable *Washer and Dryer*.



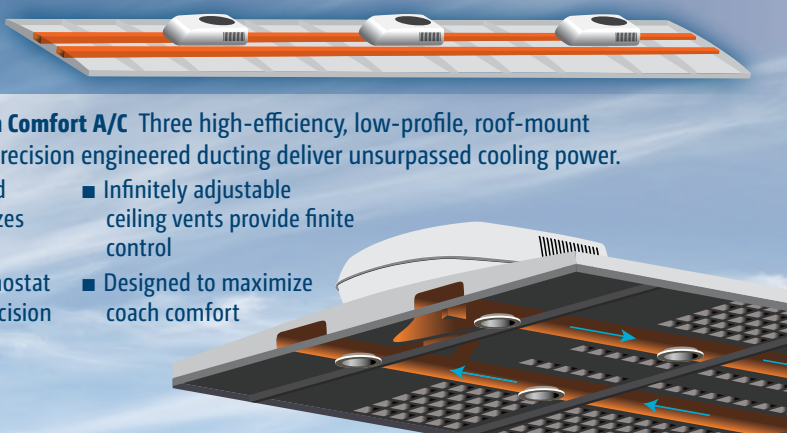
SmartSpace™ Design is at the core of the available *+Lounger* passenger cab seat. It combines the ultimate comfort of a plush recliner with the added usability of a personal activity space. Best of all, the *+Lounger* passenger cab seat rotates to become an integral part of the living area.

TRUEAIR®



TrueAir® Maximum Comfort A/C Three high-efficiency, low-profile, roof-mount cooling units and precision engineered ducting deliver unsurpassed cooling power.

- D-shaped, formed ductwork optimizes airflow
- Triple-zone thermostat controls offer precision cooling
- No roof air condensation
- Infinitely adjustable ceiling vents provide finite control
- Designed to maximize coach comfort





420D Vino with Coffee-Glazed Vienna Maple Cabinetry

Grand Canyon? Great Smoky Mountains? These are nice, but the highlight destination of any trip is right here inside your Tour. Ultraleather furniture, including the Rest Easy extendable sectional sofa with available ottomans that double as coffee tables with reversible tops, invites you to relax and stretch out in the lavish surroundings you deserve. And, once you've settled in, enjoy the best technology has to offer from the Blu-Ray® home theater sound system with HDMI® 4X4 Matrix video selection system that lets you watch high definition videos from multiple TVs at the same time.



Rest Easy Extendable Sectional Sofa



Stainless steel appliances, such as the stunning residential French door refrigerator and Corian® solid-surface countertops with a matching backsplash and sink covers, are the first things you'll notice in this galley that is truly set to impress. A matching dishwasher is available, as is the induction range top, which is part of the All Electric Coach option. The extendable galley island includes three large fully functional drawers for added storage space. A convenient overhead cabinet slideout tray is provided next to the microwave on the 42GD. The 42QD galley includes two overhead cabinet slideout trays.



42QD Galley with Extendable Island



French Door Refrigerator



Available Dishwasher



Pantry x 2 with Shelves and Hidden Drawers



Pantry x 2 The Tour takes storage to the next level with easy-access pullouts in select upper cabinets and the clever multi-purpose pantry. Behind a solid-wood door you'll find rows for storing canned goods. Hidden behind that are still more storage drawers.



Extendable Dining Table/Buffer



Both Tour models offer the extendable dining table/buffet that provides an intimate setting for two and easily expands to seat two extra guests.



Powered King Bed

The powered king bed with Ideal Rest® Natural Reserve digital comfort control mattress lets you individually adjust the firmness of each side of the bed and tip the head of the bed up to watch the large bedroom LCD TV. Natural cotton and bamboo fibers and a duo-firmness memory-cell insert ensure a perfect night's sleep.





42QD Wardrobe

The bedroom offers an abundance of wardrobe space with the coffee-glazed trim of your choice. Add the washer and dryer for laundry at your convenience.



Washer/Dryer



The 42GD offers an incredibly spacious bathroom with the coveted BIG Shower, or choose the 42QD for a private master bath and a half bath mid-coach for guests.

42QD Bathroom

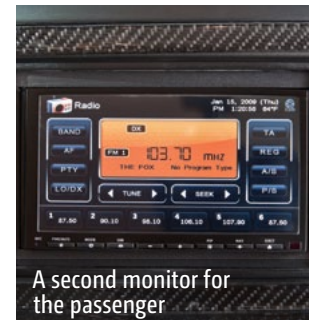


Dash

With the smooth ride of the Maxum Chassis and an ergonomic cab loaded with the best available navigational tools, you're instantly in command of this user-friendly diesel pusher. Brake and accelerator pedals adjust to fit the driver, while heated seats with six-way power pedestals keep you comfortable for the long haul. Upgrade to Flexsteel luxury cab seats with heat and massage or to the +Lounger passenger seat with a built-in workstation and footrest. Rearview cameras, side cameras, touch screens—you name it, the Tour's got it.



Power Sunvisor



A second monitor for the passenger



Power Mirrors

Pull up in a Tour and you will have the most relaxing spot in the campground with an available entertainment center featuring a 32" LCD TV and up to 199 cubic feet of storage for lawn chairs, games, grills and all your other gear. Add the 90" x 54" sliding tray, which slides out either side of the coach, for even easier access to all of your stored items. Powered acrylic awnings, stainless steel accents and bold full-body paint with an improved premier clearcoat automotive finish ensures your Tour will be turning heads no matter where you travel. The service center is color-coded for easy hookups and provides ready access to the fresh water system filter. It even includes a glove holder and paper towel dispenser.



Exterior Entertainment Center



Available 90" X 54" Sliding Storage Tray



Exterior Service Center

Fiberglass Roof The crowned, one-piece fiberglass roof is backed by a 10-year parts-and-labor roof skin warranty.

Thermo-Panel® Sidewalls By layering fiberglass and high-density block foam insulation with welded aluminum support structures, we create some of the industry's strongest, most durable and lightweight sidewalls.

E-Coating An electrodeposition coating helps protect critical steel components.

Embedded Steel Metal substructures embedded into the sidewall provide solid attachment points to keep cabinets and appliances mounted securely in place.

Solid Framework Aluminum extruded in our own facility to our exacting standards creates an extremely strong and solid structural framework.

Laser-Cut Tubing Precision laser cutters create precision joints in structural steel that are stronger and require less welding.



Interlocking Joints Specially engineered interlocking joints connect the floor, sidewalls and roof where competitors often rely on simple screws to bear the weight.



**SUPER
STRUCTURE**

BUILT TO LAST

Every Tour is built to Winnebago Industries® legendary SuperStructure construction standards. It's a process developed and refined over more than 50 years of building some of the strongest, most durable coaches in the industry.

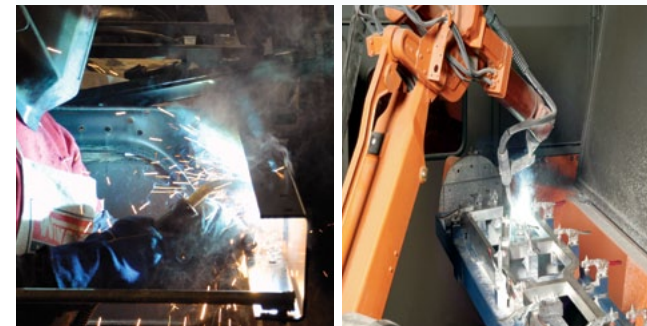
TESTING Before rolling out of our factories, every coach undergoes an extensive 113-point inspection. Each coach also passes a high-pressure water test that simulates rain at a rate of 50-inches per hour to check for leaks. During the design process, computer simulations, our physical testing center and rigorous test track ensure each model is built to last.



DETAILS At Winnebago Industries, we treat the features you can't see with the same care as the ones you can. Look in the access panels of some of our competitors' coaches and you'll see loose insulation and wires haphazardly strewn about. Winnebago Industries maintains a clean fit and finish throughout so your coach will last for the long haul.



BUILT IN-HOUSE We extrude our own aluminum. We rotocast our own plastic components. In fact, we manufacture most of our own parts so they are designed to fit the space, rather than fitting the space to an awkward off-the-shelf component size.



**SUPER
STRUCTURE**
BUILT TO LAST

W Visit BetterBuiltRVs.com to gain real insight into what goes into a Winnebago Industries motor home.

TAKE A TOUR We're proud of our processes, state-of-the-art facilities and the people who make Winnebago Industries number one. We invite you to visit our complex in Forest City, Iowa, for a first-hand look at the dedication and technology behind every motor home we build.



3-point engine mounting reduces engine vibration.

Engine compression brake uses the engine to slow the coach, promoting longer brake life.

Allison® 3000 MH 6-speed automatic transmission includes a touchpad control for ease of use.

Rear axle incorporates proprietary gear machining for a smoother, quieter ride.

The lowered-rail design moves intrusive rails from storage areas, creating up to 199 cubic feet of storage.

ZF IFS front suspension and NeWay® rear air suspension provide superior ride and handling.

MAXUM CHASSIS

15,000-lb. trailer hitch®

Taller, pass-through storage height accommodates bulky items.

Extra space in critical areas allows for more pass-through storage.

Up to a 60° wheel cut provides a tighter turning radius and better maneuvering.

“Clean Air Diesel” 450-hp ISL Cummins® engine delivers hill-climbing power when you need it most.

Low frame rails create a lower center of gravity improving stability.

Winnebago Industries’ SuperStructure integrated with the lowered-rail design creates a chassis that is seven times stronger than typical raised-rail chassis designs.

Color-coded air lines make service easy.

Dual-fill fuel tank.

A True Work of Art

You may not be able to see the Freightliner® Maxum Chassis as you’re driving through the Rockies, but you’ll know it’s there. Its powerful Cummins turbo-charged diesel engine and Allison® transmission go to work so you don’t have to sweat the hills and valleys ahead.

chassis, we set a new standard for handling, ride and performance in diesel chassis design.

But performance doesn’t mean sacrificing storage. The innovative lowered-rail design of the Maxum Chassis opens up a cavernous basement storage compartment, offering up to 199 cubic feet of storage.

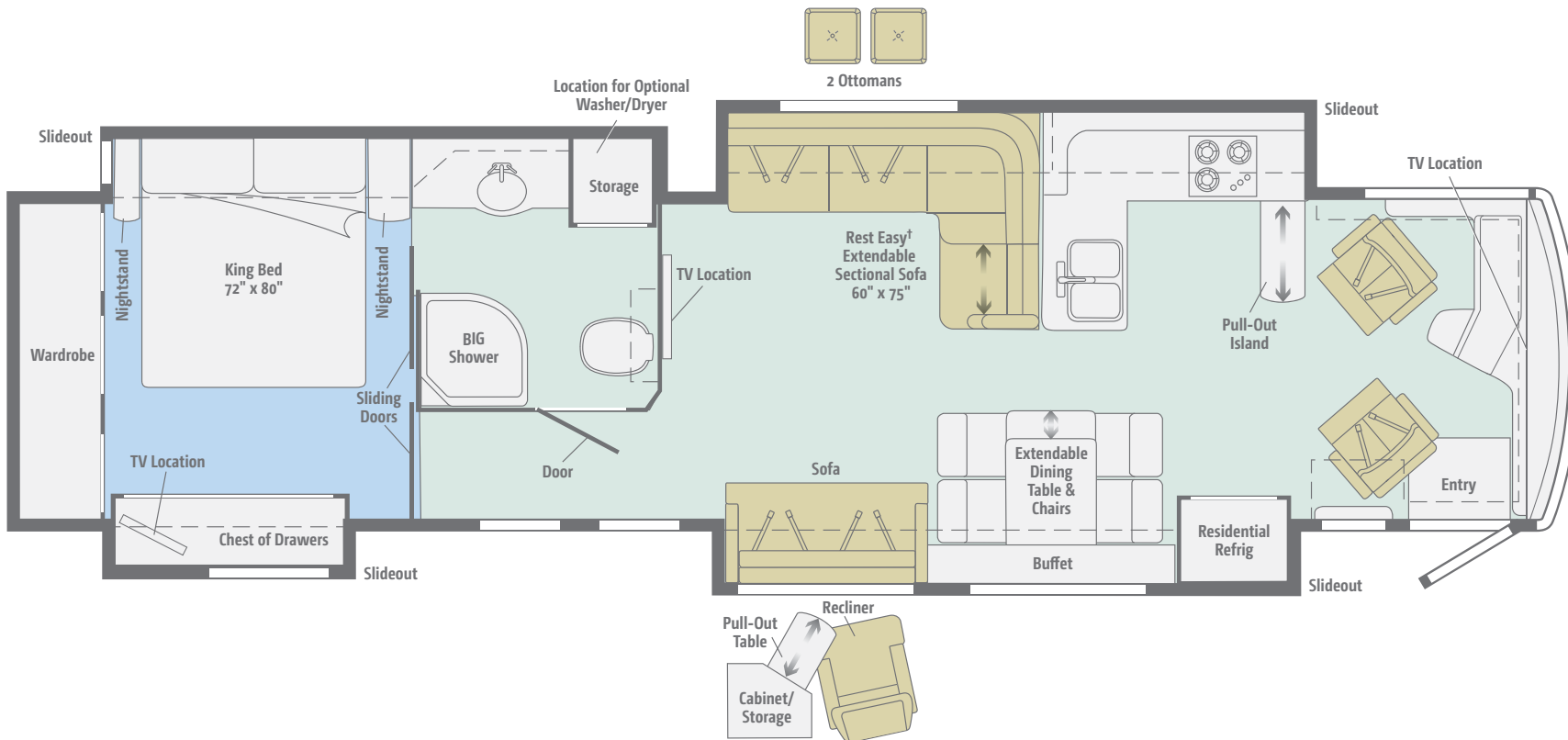
Through a strong partnership with Freightliner, the undisputed leader in diesel motor home

Michelin® tires and polished aluminum wheels look sharp.

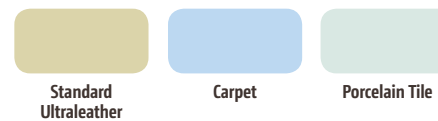
4-wheel ABS anti-lock air brakes provide fast stopping power.

NEW
42GD

Four slideouts, a unique forward galley and a 55" LCD TV mid-coach lend a distinguished look to a floorplan that features impressive lounge seating, a spacious bathroom and the elegant extendable dining table.

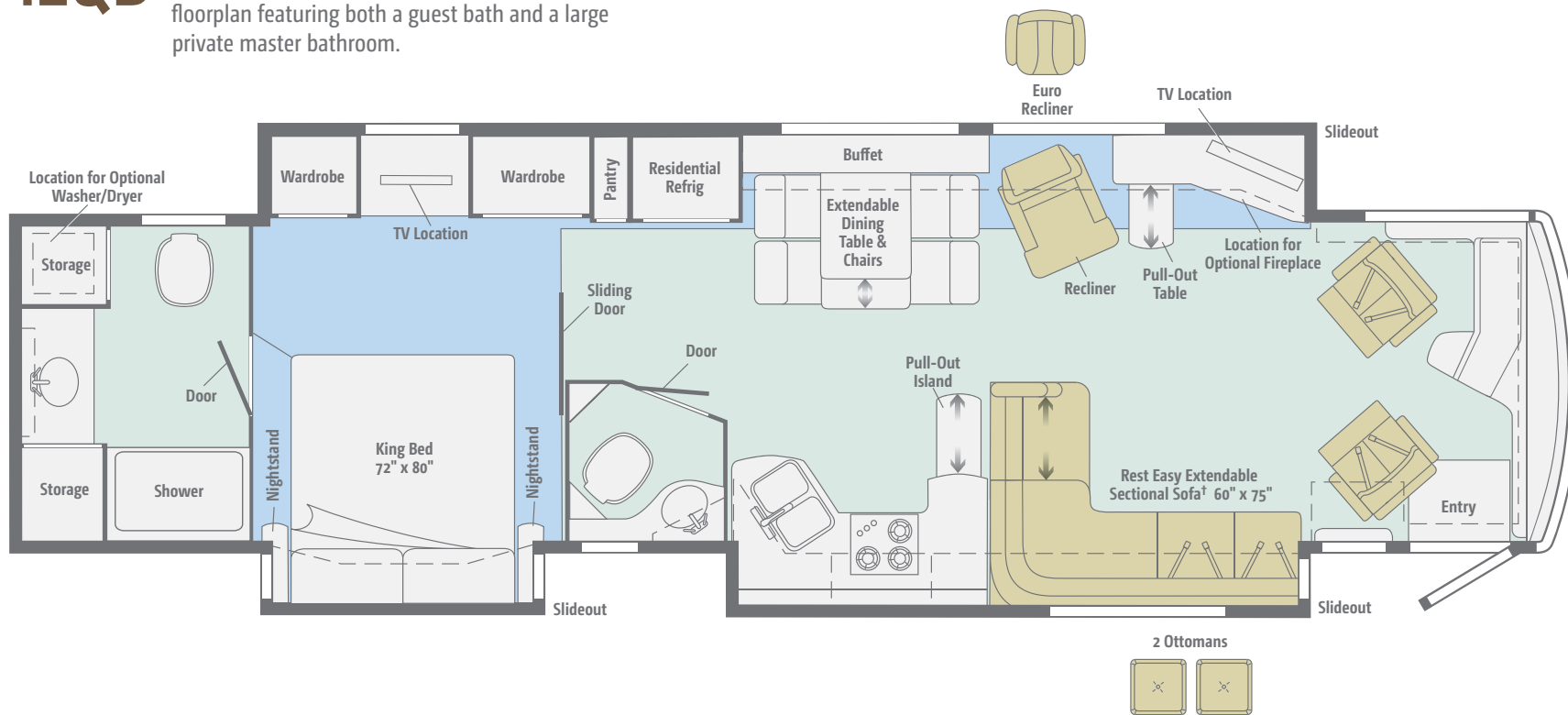


† Available with single or dual controls. Dual-control option includes only two seat belts.



Dimensions shown are for sleeping space only and may vary due to styling differences. Dashed lines denote overhead storage areas. Floorplans and specifications are also available online at GoWinnebago.com.

42QD The welcoming lounge with Rest Easy extendable sectional sofa is just the beginning of a luxury floorplan featuring both a guest bath and a large private master bathroom.



† Available with single or dual controls. Dual-control option includes only two seat belts.

Standard Ultraleather	Carpet	Porcelain Tile

Dimensions shown are for sleeping space only and may vary due to styling differences. Dashed lines denote overhead storage areas. Floorplans and specifications are also available online at GoWinnebago.com.

Choose from three elegant fabric collections, and three Coffee-Glazed cabinet finishes with Satin Nickel hardware to create the interior that suits your style.

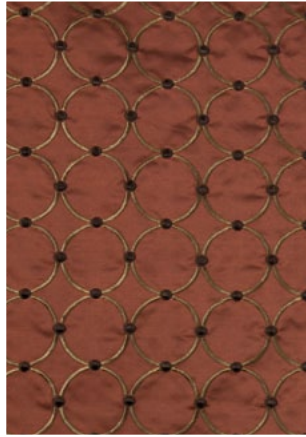
Vino



Main / Surfside Ultraleather



Accent



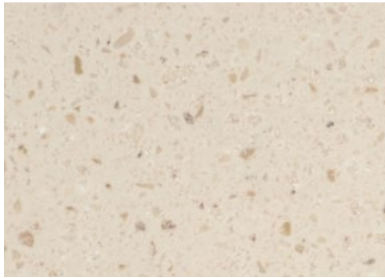
Bedsread



12" x 24" Polished
Porcelain Tile



Carpet



Cottage Lane Corian
Countertop



Waldorf Sierra Wall Board



Coffee-Glazed
Honey Cherry



Coffee-Glazed
Forest Cherry



Coffee-Glazed
Vienna Maple

Choose from three elegant fabric collections, and three Coffee-Glazed cabinet finishes with Satin Nickel hardware to create the interior that suits your style.

Apollo



Main / Black Onyx Ultraleather



Accent



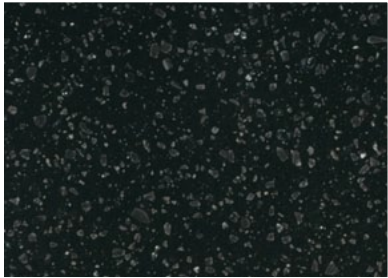
Bedsread



12" x 24" Polished
Porcelain Tile



Carpet



Night Sky Corian
Countertop



Waldorf Sierra Wall Board



Coffee-Glazed
Honey Cherry



Coffee-Glazed
Forest Cherry



Coffee-Glazed
Vienna Maple

Choose from three elegant fabric collections, and three Coffee-Glazed cabinet finishes with Satin Nickel hardware to create the interior that suits your style.

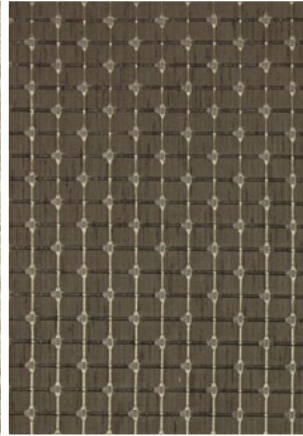
Angora



Main / Parchment Ultraleather



Accent



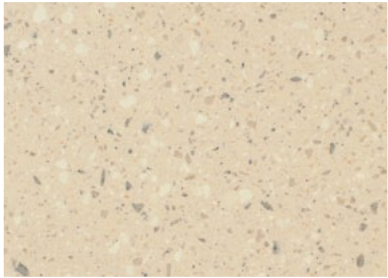
Bedsread



12" x 24" Polished
Porcelain Tile



Carpet



Fossil Corian
Countertop



Expo Truffle Wall Board



Coffee-Glazed
Honey Cherry



Coffee-Glazed
Forest Cherry



Coffee-Glazed
Vienna Maple

Fabrics and carpets may change without notice or obligation.

Stylize your Tour with one of six exceptional full-body paint options featuring a premier clearcoat automotive finish that brings added depth and shine to your coach.



Silver Sage
FULL-BODY PAINT



Smokey Caramel
FULL-BODY PAINT

Stylize your Tour with one of six exceptional full-body paint options featuring a premier clearcoat automotive finish that brings added depth and shine to your coach.



Polished Pewter
FULL-BODY PAINT



Autumn Frost
FULL-BODY PAINT

Stylize your Tour with one of six exceptional full-body paint options featuring a premier clearcoat automotive finish that brings added depth and shine to your coach.



Graphite
FULL-BODY PAINT



Black Garnet
FULL-BODY PAINT

Weights & Measures

Length	42'10"
Exterior Height¹	12'11"
Exterior Width²	8'5.5"
Exterior Storage³ (cu. ft.)	181
Awning Length	20'
Interior Height	7'
Interior Width	8'0.5"
Freshwater Capacity w/Heater⁴ (gal.)	85
Water Heater Capacity	Continuous
Holding Tank Capacity - Black/Gray⁴ (gal.)	51/116
LP Capacity⁵ (gal.)	28
Fuel Capacity (gal.)	150
GCCR⁶ (lbs.)	59,600
GVWR (lbs.)	44,600
GAWR - Front (lbs.)	14,600
GAWR - Rear (lbs.)	30,000
Wheelbase	279" + tag

Maxum® Freightliner® Chassis

450-hp Cummins® ISL 8.9L turbo-charged diesel engine
Adjustable brake and accelerator pedals
Allison® 3000 MH 6-speed electronic transmission w/engine compression brake
Information display center
ZF™ Independent Front Suspension, NeWay® rear suspension
160-amp. alternator
Air brakes w/ABS
Quick connect air accessory
Automatic leveling jacks w/3-position controls
Tow power package w/7-pin trailer wiring and I.P. wiring
Trailer hitch⁶ 15,000-lb. drawbar/1,500-lb. maximum vertical tongue weight
Stylized aluminum wheels

42GD

42'10"
12'11"
8'5.5"
181
20'
7'
8'0.5"
85
Continuous
51/116
28
150
59,600
44,600
14,600
30,000
279" + tag

42QD

42'10"
12'11"
8'5.5"
199
14'6"
7'
8'0.5"
85
Continuous
51/71
28
150
59,600
44,600
14,600
30,000
279" + tag

Cab Conveniences

Cab Seats adjustable armrests, adjustable lumbar support, multi-adjustable recline and six-way power pedestals
Heated driver seat
Heated, queen passenger seat
Passenger seat footrest
RV Radio®/Rearview Monitor System 6.5" LCD color touch screen, CD player w/remotes, weather band, clock, iPod®/MP3 input, rearview color camera w/one-way audio and sideview camera system
Tilt/telescoping SmartWheel™ steering wheel w/infinite adjustable column
Cruise control
Power door locks w/remote keyless entry
Electric adjustable mirrors w/defrost, sideview camera and turn signal light in lower glass
12-volt powerpoints
Powered stepwell cover
Two-speed built-in defroster fan

MCD American Duo® solar/blackout roller shades powered for windshield, manual for driver/passenger windows

Chassis/house battery radio power switch

Dual map lights

C.B. wire prep

OPTIONAL EQUIPMENT

Infotainment Center/GPS voice navigation, 7" LCD touch screen color monitor w/PIP, compass, outside temperature, handheld remote and steering wheel remote, AM/FM/CD/DVD radio, Bluetooth™, Sirius® satellite ready, iPod interface connector, passenger-side monitor, rear and sideview cameras

Sirius Satellite Radio w/iPod interface connector

+Lounger heated passenger cab seat w/flip-up workstation

Flexsteel® Luxury Cab Seats driver and queen passenger seat w/six-way power, power passenger footrest, heat and massage, remote swivel, power lumbar support, manual recline, adjustable armrests

Interior

40" LCD TV (front overhead 42GD, mid-coach 42QD)

55" LCD TV (mid-coach 42GD)

Blu-Ray® Home Theater Sound System CD/DVD player, iPhone®/iPod dock w/video, receiver, amplifier, 5 speakers and subwoofer

Digital HDTV amplified antenna system

Dirt Devil® central vacuum system w/Vac Pan®

Key-activated slideroom master lock switch

HDMI 4X4 Matrix central video selection system

Satellite system ready (front and bedroom)

OnePlace® systems center

Tinted, dual-glazed, thermo-insulated coach windows

Soft vinyl ceiling

Powered roof vent (galley and bath)

MCD American Duo solar/blackout roller shades

Accent Lights above front overhead cabinets and ceiling trim panels

OPTIONAL EQUIPMENT

Stackable washer/dryer

King-Dome® in-motion satellite dish dual LNB, HD-ready (front and bedroom)

King-Dome automatic satellite dish antenna HD-ready (front and bedroom)

Winegard® Trav'ler® automatic multi-satellite antenna

Electric fireplace (42QD)

Galley

Corian® countertops, backsplash and sink covers

Stainless steel microwave/convection oven w/sensor cook and vented range fan

3-burner LP range top w/glass cover and storage below

Stainless steel refrigerator w/French doors freezer drawer, water and ice dispenser

Filtered cold-water

OPTIONAL EQUIPMENT

Stainless steel drawer-style dishwasher

Stainless steel microwave/speedcook oven w/ exterior vented range fan

2-burner induction range top w/storage below (w/All Electric Coach option)

Bath

Corian countertop

Flexible showerhead

Moen® Posi-Temp® shower valve

Textured glass shower door

Skylight

Porcelain toilet

Area rug (master bath 42QD)

Bedroom

26" LCD TV (42QD)

32" LCD TV (42GD)

Ceiling fan

Powered king bed w/Ideal Rest® Natural Reserve digital comfort control mattress and remote controls

Bedsread, pillows and shams

Headboard

OPTIONAL EQUIPMENT

Porcelain tile flooring (bedroom)

Exterior

Auxiliary docking lamps

Driver-side service bay light

Powered acrylic patio awning w/wind sensor

Powered acrylic entrance awning

Acrylic window awnings

KeyOne™ lock system

Lighted storage compartments

4 storage containers w/lids

7' folding stepladder

Porch and stepwell light

Automatic entrance steps

Rear ladder

Lower front protective mask

Premier clearcoat automotive finish

Rear mud flaps

Full-width rear mudguard

OPTIONAL EQUIPMENT

Entertainment Center 32" LCD TV, stereo w/remote, HDMI connection, audio out jack, TV jack, power outlets

90" x 54" slideout storage compartment tray (extends out either side of the coach)

Polished stainless steel on lower valance doors and panels

Norcold® portable refrigerator/freezer on slideout tray

Heating & Cooling System

TrueAir® Maximum Comfort A/C three 13,500 BTU roof air conditioners w/two heat pumps and three condensation pumps

Aqua-Hot® 450 hydronic triple-zone heating system w/continuous hot water

Electrical System

Service Center lighted, 120V AC power, cable input, power cord, QuickPort® service connection hatch

PowerLine® Energy Management System

Auxiliary start circuit

50-amp. power cord

Power cord reel

Exterior TV jack and AC duplex receptacle

2,800-watt inverter/charger w/remote panel

10,000-watt Cummins Onan® Quiet Diesel™ generator

Powered generator slideout mechanism

AC/DC electrical distribution system

6 maintenance-free AGM (Absorbed Glass Mat) sealed batteries

Battery disconnect system (coach and chassis)

Automatic dual-battery charge control

Shoreline/generator automatic changeover switch w/Surge Guard® Plus

Chassis battery charger/maintainer

Automatic generator start system

OPTIONAL EQUIPMENT

All Electric Coach replaces LP range top w/induction range top; LP tank and all components are removed and replaced w/additional storage

100-watt solar panel battery charger

Plumbing System

Service Center lighted, monitor panel, pressurized city water hookup w/diverter fill, fresh water drain, drainage valves, exterior wash station w/pump switch, glove holder, holding-tank flushing system, paper towel holder, portable satellite dish hookup, 20' sewer hose w/QuickConnect®, QuickPort service connection hatch, soap dispenser

TrueLevel™ holding-tank monitoring system

Water supply hose w/reel

Full coach water filtration system

Permanent-mount LP tank w/gauge

LPG accessory connection (patio area)

On-demand water pump

Winterization Package water heater bypass valve and siphon tube

Heated holding-tank compartment

Safety

Seat belts

LP, smoke and carbon monoxide detectors

10 BC fire extinguisher

Ground fault interrupter

Daytime running lamps

Fog lamps

High-mount brake lamps

Warranty⁷

12-month/15,000-mile basic warranty⁸

36-month/36,000-mile limited warranty on structure⁸

10-year limited parts-and-labor warranty on roof skin⁸

- The height of each model is measured to the top of the tallest standard feature and is based on the curb weight of a typically equipped unit. The actual height of your vehicle may vary by several inches depending on chassis or equipment variations. Please contact your dealer for further information.
 - Tour floorplans feature a wide-body design – over 96". In making your purchase decision, you should be aware that some states restrict access on some or all state roads to 96" in body width. Before making your purchase decision, you should confirm the road usage laws in the states of interest to you.
 - The load capacity of your motor home is designated by weight, not by volume, so you cannot necessarily use all available space when loading your motor home.
 - Capacities are based on measurements prior to tank installation. Slight capacity variations can result due to installation applications.
 - Capacities shown are tank manufacturer's listed water capacity (W.C.). Actual filled LP capacity is 80% of listing due to overfilling prevention device on tank.
 - Actual towing capacity is dependent on your particular loading and towing circumstances which includes the GVWR, GAWR, and GCWR, as well as adequate trailer brakes. Please refer to the Operator's Manual of your vehicle for further towing information.
 - See separate chassis warranty.
 - See your dealer for complete warranty information
- NA Not Available

Not all items available in combination. See dealer for details.

Winnebago Industries® continuing program of product improvement makes specifications, equipment, model availability and prices subject to change without notice. Comparisons to other motor homes are based on the most recent information available at printing.

GoWinnebago.com Has Gone Mobile

Learn more about the 2013 Tour on your computer, smartphone or tablet. Visit GoWinnebago.com/Tour for the complete Tour experience.



PREFERRED CARE PROGRAM

We back our motor homes with best-in-class support both before *and* after the sale:

- 12-month/15,000-mile basic limited warranty
- 36-month/36,000-mile warranty on structure
- 10-year standard limited parts-and-labor roof skin warranty
- Complimentary 24-hour roadside assistance program



TRIPSaver
FAST TRACK PARTS

- TripSaver® Fast Track Parts guarantees that in-stock warranty parts ship directly to your dealer within 24 hours
- National dealer service network

Join the Club, Join the Fun

As a Winnebago motor home owner, you are invited to join the WIT Club. It's a great way to take full advantage of your new coach and meet fun-loving WIT Club members from across the country who make motor home adventures a way of life.



Members enjoy:

- Caravans and rallies
- Newsletters
- Local and state group activities
- RV travel benefits

See more on WITclub.com



Grand National Rally

Each year, thousands of Winnebago Industries motor home owners descend upon Forest City, Iowa, for the Grand National Rally. Rally goers connect with old friends and enjoy concerts, tours, activities and more in a weeklong celebration of the motor home lifestyle. Join us this July for a week you'll never forget.

