



ENTEGRA
COACH®

THE QUIETEST-RIDING,
BEST-HANDLING MOTOR COACH.
PERIOD.

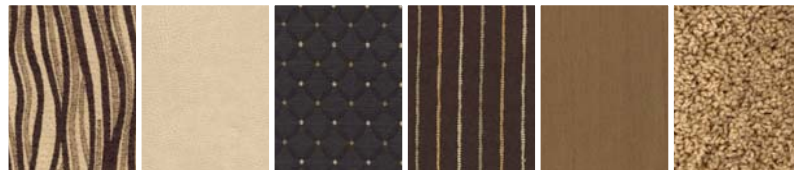


2014 ASPIRE

Without compromise.

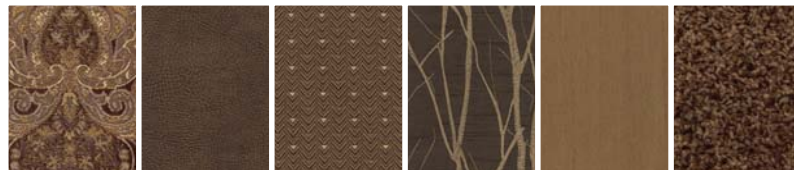
INTERIOR COLORS

IRISH CREAM



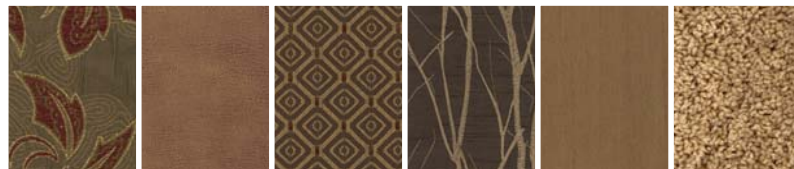
MAIN ULTRA-LEATHER SEATING COORDINATE BEDSPREAD ACCENT CARPET

ESPRESSO



MAIN ULTRA-LEATHER SEATING COORDINATE BEDSPREAD ACCENT CARPET

CABERNET



MAIN ULTRA-LEATHER SEATING COORDINATE BEDSPREAD ACCENT CARPET



WINDSOR
GLAZED CHERRY



TUSCAN GLAZED
CHERRY

EXTERIOR COLORS



BLACK PEARL



GOLDEN GARNET



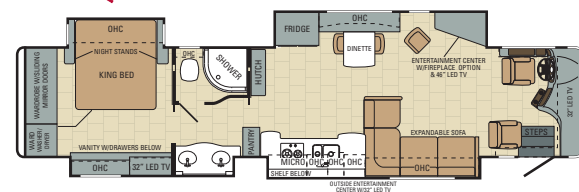
AUTUMN BERRY



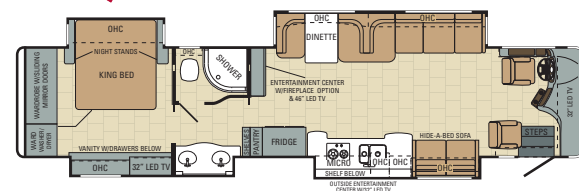
SHIMMERING CABERNET

FLOORPLANS

42DEQ



42DLQ OPTIONS A, B, C

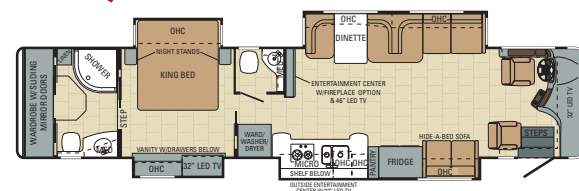


OPTION A



EASY BED SOFA
W/TABLE OPTION

42RBQ OPTIONS A, B, C

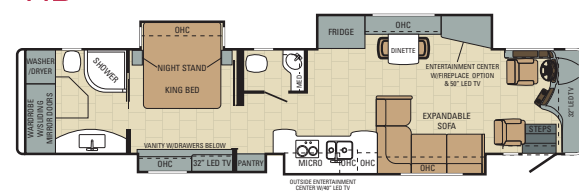


OPTION B



HIDE-A-BED W/DESK
OR TABLE OPTION

44B



OPTION C



FREE STANDING
TABLE W/4 CHAIRS

44U



STANDARDS & OPTIONS

BATHROOM

- High gloss 12"x 24" porcelain tile with glass inserts
- Power MaxxAir vent
- Solid surface countertops with integrated sink
- One-piece radius fiberglass shower
- Porcelain toilet

BEDROOM

- Samsung 32" LED TV
- King Select Comfort air mattress
- Remote secure coach locking system

KITCHEN

- High gloss 12"x24" porcelain tile with glass inserts
- Recessed, glass top gas range
- Convection microwave oven
- Solid surface countertops with integrated sink
- Residential refrigerator with ice maker and water dispenser
- Porcelain tile backsplash with glass design inlays
- Silverware drawer, divided for utensils
- Pullout cabinet extension with countertop
- Cutting board
- Large deep drawer with waste basket

INTERIOR

- Central vacuum system with vac pan
- Ultraleather furniture
- Multiplex lighting
- LED recessed 12V lighting package
- Day/night roller shades throughout
- Stackable washer and dryer
- Slideouts controlled with remote

DRIVER COMPARTMENT AMENITIES

- 3-point, lap and shoulder safety belts integrated into driver and passenger seats
- Adjustable foot pedal
- Battery boost switch
- Chassis battery disconnect
- Color back-up camera and monitor
- Powered front sun visors and privacy shade
- Powered stepwell cover

- Side cameras with turn signals
- Sirius radio and tuner
- Smart Wheel steering with integrated controls for cruise control and wipers
- Spartan message center with LCD display featuring: odometer, tachometer, instantaneous fuel economy, fuel remaining, outside air temp., coolant temp., engine oil temp. and pressure, transmission temp., turbo boost pressure, air pressure, diagnostic functions, fault codes, service reminders, percentage of engine load, trip meter, speed and voltage
- Touch-screen AM/FM/CD/DVD with Rand McNally GPS navigation, Bluetooth and (4) speakers
- CB prep w/antenna

CHASSIS

- (2) chassis batteries
- 4.88 "Quiet Gear" rear axle ratio
- 100-gal. fuel tank (dual fill)
- 170-amp alternator
- 15,000-lb. hitch with 7-pin plug
- Allison 3000 MH 6-speed transmission
- Cummins ISL turbocharged 450 HP engine 1,250 lb. ft. torque at 1,400 RPM
- All-wheel ABS brakes
- Side-mounted radiator
- Engine block heater
- Two-stage Jake brakes
- Polished aluminum wheels
- Raised rail chassis
- Remote air fill for air hose
- Tag axle auto weight release
- Rear axle, 20,000-lb. rated, tag axle 12,000-lb.
- Front axle I-beam 14,600-lb. wide track

CONSTRUCTION

- 3/4" (7) ply plywood main floor decking
- 2-1/2" wall with welded tubular construction
- 2" x 4" floor truss construction
- 3M front protective film mask
- Aluma-Tru Superstructure construction on 12"-16" centers

- Enclosed, insulated and heated floor and underbelly
- Flush-mounted slideout rooms
- Fully decked roof with 3/8" plywood
- Polar Pack insulation with reflective Flexfoil floor (R-33), roof (R-24), sidewalls (R-16), front and end caps (R-22)
- One-piece fiberglass roof
- Electric slideout system
- Smooth gel-coat fiberglass exterior walls
- Steel reinforced front cap and windshield frame
- X-Bridge frames engineered into chassis

EXTERIOR

- Carefree patio awning w/LED lights
- Carefree power entrance door awning
- Carefree slideout and window awnings
- Chrome, heated, remote control, side-view mirrors
- Docking lights
- Aire-Secure travel locks for all passage doors
- Frameless dual-pane tinted safety-glass windows
- Full-width rear mudflap
- Hydraulic automatic leveling jacks
- Keyless entry with key fob
- Roof ladder
- Slideout cargo tray
- Sliding battery tray
- Uni-Dock exterior utility center, heated and enclosed with second system monitor panel
- Exterior 40" LED HDTV with CD/DVD player and speakers
- Winegard in-motion dome satellite dish

HEAT, POWER & WATER

- Aqua-Hot 400-LP hydronic water and heating system with in-floor heat throughout
- (3) 15,000-BTU low profile central A/Cs with heat pump, digital thermostat, Chillgrille and drain tubes
- 5-watt solar panel (for chassis batteries)
- 50-amp quick-connect power cord with electric reel
- 2,800-watt Pure sine wave inverter with (4) 6V batteries
- Black holding tank sprayer
- Onan 10,000-watt diesel generator on sliding tray

- Onan generator with auto-gen start
- Sea Level tank monitoring system
- Total coach dual system water filter
- 50-gal. propane gas tank
- Solar power prep

SAFETY EQUIPMENT

- Carbon monoxide detector
- Deadbolt lock on entrance door
- Egress window
- Fire extinguisher
- Lap safety belts in living area
- Propane alarm
- Security system
- Smoke alarm
- Third brake light

PREMIUM SOUND SYSTEM

- Outside entertainment center: 40" LED Samsung TV; Sony double DIN CD/DVD/AM/FM w/touch screen
- Bedroom Bose Solo surround system
- Living room: 40"/50" thin Samsung LED TV; Samsung Blue-ray; Bose Cinemate ISR sound bar

OPTIONS

- Samsung 32" LED HDTV, front overhead
- Fireplace
- Free-standing table with 4 chairs and sofa (42DLQ, 42RBQ)
- Trav'ler satellite dish
- Ceiling fan

SPECIFICATIONS

Floor Plan	GVWR (lbs.)	GCWR (lbs.)	Front GAWR (lbs.)	Rear GAWR (lbs.)	Tag Axle GAWR (lbs.)	Wheel Base	Overall Length	Overall Height w/ Air & Satellite	Exterior Width	Interior Headroom	Fresh Water Capacity (gal.)	Grey Waste Water Capacity (gal.)	Black Waste Water Capacity (gal.)
42DEQ	46,600	61,600	14,600	20,000	12,000	296"	43' 1"	12' 11"	101"	84"	80	52	52
42DLQ	46,600	61,600	14,600	20,000	12,000	296"	43' 1"	12' 11"	101"	84"	80	52	52
42RBQ	46,600	61,600	14,600	20,000	12,000	296"	43' 1"	12' 11"	101"	84"	80	52	52
44B	46,600	61,600	14,600	20,000	12,000	320"	45'	12' 11"	101"	84"	80	52	52
44U	46,600	61,600	14,600	20,000	12,000	320"	45'	12' 11"	101"	84"	80	52	52



After 40 years of building Jayco, the world's largest privately-owned RV manufacturer, our family is proud to stand behind every Entegra Coach we build with the Bontrager Family Promise. It's a promise to provide unfailing customer service — before, during and after the sale. To learn more, visit us online or see your local Entegra Coach dealership.

DERALD & WILBUR BONTRAGER
FOUNDERS OF ENTEGRA COACH



A PEACE-OF-MIND PROMISE

2-YEAR WARRANTY / 5-YEAR STRUCTURAL

Our family is proud to stand behind every Entegra Coach we build. That's why we back our motor coaches with a manufacturer's limited warranty, warranted to the original purchaser for two years (five years structural) from the original date of purchase or 24,000 miles of use, whichever comes first, against defects in materials and workmanship. Our commitment is to provide you with the highest level of products and services possible. We invite you to compare us with other manufacturers — we think you will find that our passion for your satisfaction is unmatched. For a copy of the limited warranty with full terms and conditions, ask your local Entegra Coach dealer.

3-YEAR PLATINUM-LEVEL ROADSIDE ASSISTANCE

We promise peace of mind in countless ways with the Entegra Coach Customer First Roadside Assistance program, yours at no cost during your first three years of ownership. Offered through National Motor Club, the largest RV emergency road service in the country, this program gives you immediate access to dependable roadside assistance and support service with a simple phone call.

- 24/7 technical support and assistance technicians
- Service appointment assistance
- Mobile mechanic
- Emergency road towing and winching
- Delivery of emergency fluids
- Flat tire service
- Jump start/battery boost
- Lockout services
- Complete concierge service (including many types of errands and personal services)



ENTEGRA
COACH®

Without compromise.

Entegra Coach | P.O. Box 460 | Middlebury, IN 46540 www.entegracoach.com

Please Note: Information on this publication is the latest available at the time of printing. Entegra Coach reserves the right to make changes and to discontinue models without notice or obligation. RVs built for sale in Canada may differ to conform to Canadian codes. ©2014 Entegra Coach

2014 Aspire.cdr JM 3-14 V.4 Printed in the U.S.A.



Gross Vehicle Weight Rating (GVWR):

The maximum permissible weight of the motor coach, including the Unloaded Vehicle Weight (UVW) plus passengers, personal items, all cargo, fluids, options and dealer-installed accessories. The GVWR is equal to or greater than the sum of the UVW and the Cargo Carrying Capacity.

Gross Axle Weight Rating (GAWR):

The maximum allowable weight each axle assembly is designed to carry, as measured at the tires, therefore including the weight of the axle assembly itself.

Gross Combined Weight Rating (GCWR):

The maximum allowable combined weight of the motor coach used as a tow vehicle and the attached towed vehicle.

It is important for your safety and enjoyment that you are aware of the weights and tow ratings of the RV you select. Consult a competent advisor for questions or advice. Whether you are new to RVing or a veteran, get a feel for the performance of your RV before heading out on the roadways. When you tow a vehicle with your RV, you must drive differently than when you drive a single vehicle. Practice hooking up, driving, backing up and braking in a safe environment or seek out professional instruction. Entegra Coach affixes a weight label to each RV which lists weight information for that vehicle. Refer to that label to verify the vehicle will meet your requirements. See specification chart within this publication.