

# DISCOVERY® 2014

CLASS A DIESEL |



Autumn Pecan



Madison Midnight

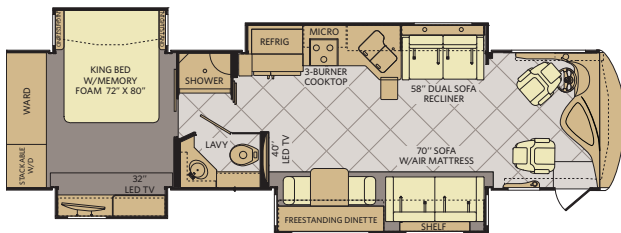


Vintage Stone

## TOP FEATURES

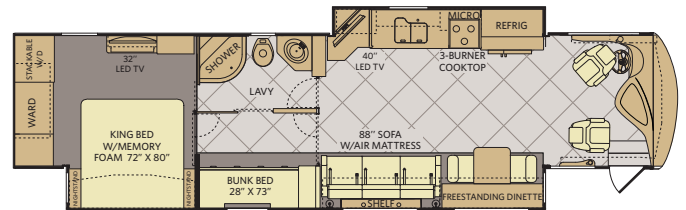
- 380HP Cummins® Engine
- Molded Fiberglass Roof
- Sony® A/V Electronics
- LED TVs
- 8.0 kW Onan® Quiet Diesel Generator w/Slide
- LED Lighting
- High-Gloss 24x24 Porcelain Floor Tile
- Polished Solid Surface Countertops
- Hardwood Cabinet Doors/Drawers
- Double Roller Shades
- Side Swinging Luggage Doors
- 84" Interior Ceiling Height
- Optional Exterior Pull-Out Grill & Kitchenette
- Chrome Luggage Door Handles
- King Dream Easy Memory Foam Mattress

36J



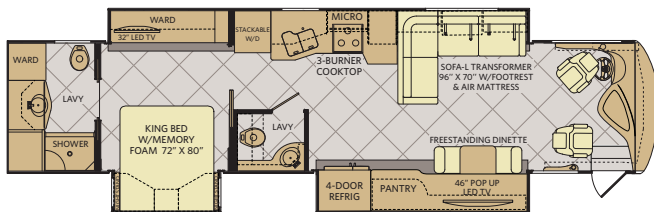
Available options: 087, 093, 107, 113, 144, 635, 830, 856

40G



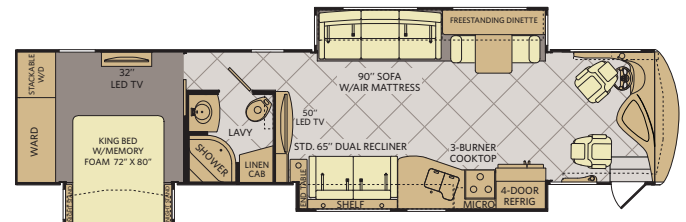
Available options: 087, 093, 107, 113, 144, 635, 830, 856, 867, 878

40E



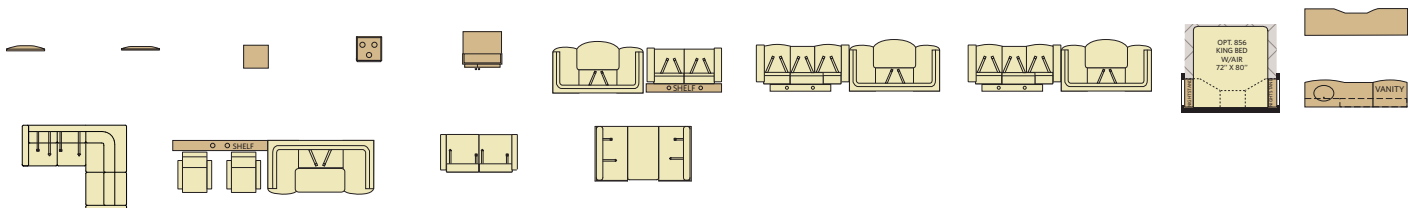
Available options: 087, 093, 107, 113, 144, 856

40X



Available options: 087, 093, 107, 113, 144, 191, 627, 635, 830, 856

## OPTIONS



# WEIGHTS & MEASUREMENTS

CHASSIS MODELS	POWER BRIDGE*			
	36J	40E	40G	40X
Wheelbase (inches)	228	276	276	276
GVWR (lbs) <sup>1</sup>	33,400	33,400	33,400	33,400
Front GAWR (lbs) <sup>2</sup>	12,400	12,400	12,400	12,400
Tag Axle GAWR	N/A	N/A	N/A	N/A
Rear GAWR (lbs) <sup>2</sup>	21,000	21,000	21,000	21,000
GCWR (lbs) <sup>3</sup>	43,400	43,400	43,400	43,400
Hitch Rating (lbs) <sup>1,11</sup>	7,500	10,000	10,000	10,000
Tongue Weight (lbs)*	750	1,000	1,000	1,000
Fuel Capacity (gal)	100	100	100	100

## POWER BRIDGE® CHASSIS (36'-40' MODELS)

**Model:** Freightliner® XCM Series  
**Engine:** Cummins® 9L ISL  
**Transmission:** Allison® 3000 MH 6-Speed  
 w/Electronic Shifter

**Alternator:** Delco Remy 160 Amp  
**Torque:** 1,150 lb-ft @ 1,400 RPM  
**Horsepower:** 380HP

## DIMENSIONS & CAPACITIES

MODELS	36J	40E	40G	40X
Overall Length <sup>4</sup>	37' 4"	41' 4"	41' 4"	41' 4"
Overall Height (suspension inflated)	12' 10"	12' 10"	12' 10"	12' 10"
Overall Width (maximum) <sup>5,6</sup>	102"	102"	102"	102"
Interior Height (maximum)	84"	84"	84"	84"
Interior Width (maximum)	96"	96"	96"	96"
Interior Storage (cu. ft.)	215	166	197	197
Exterior Storage (cu. ft.)	140	208	208	208
Fresh Water Holding Tank (gal)	100	100	100	100
Grey Water Holding Tank (gal)	75	75	75	75
Black Water Holding Tank (gal)	50	50	50	50
Appliance Propane Tank (gal) (WC) <sup>7</sup>	38.7	38.7	38.7	38.7
Water Heater Tank (gal)	10	10	10	10



Visit [FleetwoodRV.com](http://FleetwoodRV.com) or find Fleetwood RV Tablet apps in the App Store or Google Play.



\*\* All 2014 Fleetwood RV motorhomes include a 1-year emergency roadside assistance membership. For complete info, see your Fleetwood RV dealer.