

PROVIDENCE® 2014

CLASS A DIESEL | **FLEETWOOD RV**



Cashmere Charm



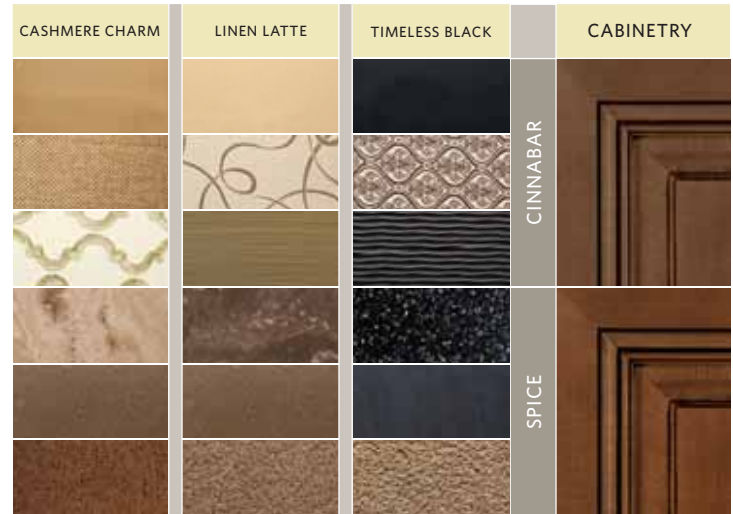
Linen Latte



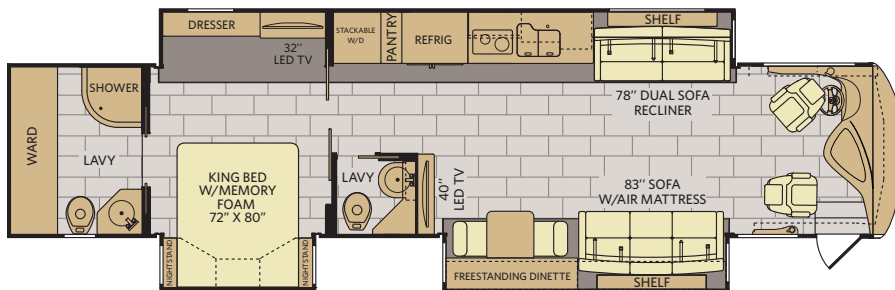
Timeless Black

TOP FEATURES

- 450HP Cummins® ISL 9L Engine
- Aqua-Hot® System Standard
- 2,800-Watt Pure Sine Wave Inverter w/Remote
- 8.0 kW Onan® Quiet Diesel Generator
- 15,000 lb. Hitch Rating
- Sony® LED TVs
- High-Gloss Oversized Porcelain Floor Tile
- Hardwood Cabinet Doors/Drawers
- Polished Solid-Surface Countertops
- Double-Roller Shades
- 84" Interior Ceiling Height
- King Dream Easy Memory Foam Mattress

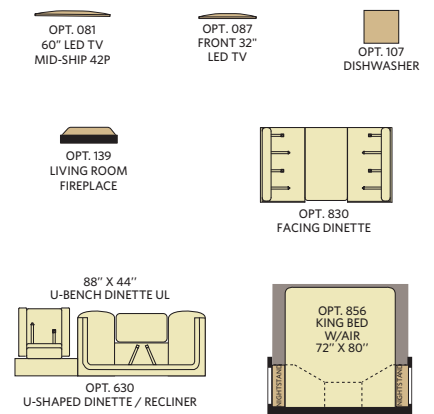


42M

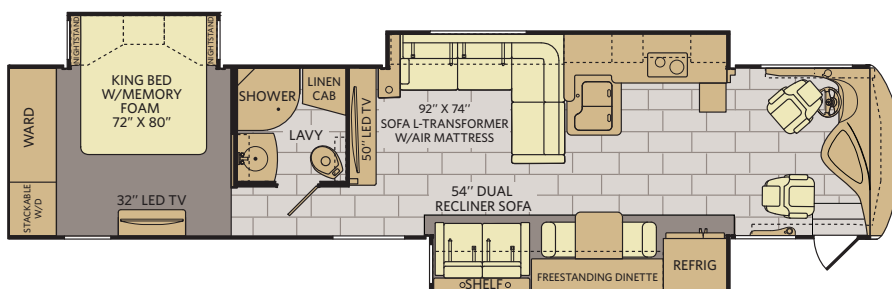


Available options: 087, 107, 635, 830, 856

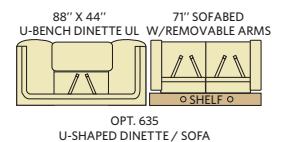
OPTIONS



42P



Available options: 081, 087, 107, 139, 630, 830, 856



WEIGHTS & MEASUREMENTS

CHASSIS	POWER BRIDGE® II	
	42M	42P
MODELS		
Wheelbase (inches)	302"	302"
GVWR (lbs) ¹	44,700	44,700
Front GAWR (lbs) ²	14,700	14,700
Tag Axle GAWR	10,000	10,000
Rear GAWR (lbs) ²	20,000	20,000
GCWR (lbs) ³	59,700	59,700
Hitch Rating Weight (lbs) ^{††}	15,000	15,000
Tongue Weight (lbs) ¹	1,500	1,500
Fuel Capacity (gal)	150	150

POWER BRIDGE® II CHASSIS

Model: Freightliner® XCM Series
Engine: Cummins® 9L ISL
Transmission: Allison® 3000 MH 6-Speed w/Electronic Shifter

Alternator: Leece Neville 170 Amp
Torque: 1,250 lb-ft @ 1,400 RPM
Horsepower: 450HP

DIMENSIONS & CAPACITIES

MODELS	42M	42P
Overall Length ⁴	43' 6"	43' 6"
Overall Height (with A/C)	12' 10"	12' 10"
Overall Width (maximum) ^{5, 6}	102"	102"
Interior Height (maximum)	84"	84"
Interior Width (maximum)	96"	96"
Interior Storage (cu.ft.)	207	200
Exterior Storage (cu. ft.)	189	188
Frest Water Holding Tank (gal)	100	100
Grey Water Holding Tank (gal)	60	60
Black Water Holding Tank (gal)	40	40



Visit FleetwoodRV.com or find Fleetwood RV Tablet apps in the App Store or Google Play.

Addendums

- GVWR (Gross Vehicle Weight Rating) is the maximum permissible weight of this fully loaded motorhome. The GVWR is equal to or greater than the sum of the (UVW) unloaded vehicle weight plus the (OCCC) occupant cargo-carrying capacity*.
- GAWR (Gross Axle Weight Rating) is the maximum permissible loaded weight a specific axle is designed to carry.
- GCWR (Gross Combined Weight Rating) is the value specified by the motorhome manufacturer as the maximum allowable loaded weight of this motorhome with its towed vehicle. Towing and braking capacities may be different. Refer to Fleetwood and chassis manufacturer's manuals for complete information.
- Length measured from front bumper to rear bumper (excludes accessories).
- Excludes safety equipment and awnings.
- Motorhomes feature a body width over 96" which will restrict your access to certain roads. Before purchasing, you should research any state and/or province road laws which may affect your usage.
- Tank manufacturer's listed water capacity (WC). Actual propane capacity is 80% of water listing as required by the safety code.

† The chassis manufacturer recommends the installation of a supplemental brake control system to activate the brakes on the vehicle or trailer you are towing. Hitch receiver ratings expressed are maximum for the hitch receiver installed and may require the purchase of additional equipment that is dependent on the weight of the towed load. Consult with hitch receiver manufacturer for further information.

* UVW and OCCC are found on the label containing the federal certification tag in each RV.

†† The Minimum Towable Load of this vehicle is the available weight capacity, up to GCWR, when the coach is fully loaded to maximum GVWR. However, if the coach is loaded to something less than maximum GVWR, that extra available weight capacity can be added to your Towable Load. For example, if your coach is loaded to 1000lbs less than maximum GVWR, your Towable Load increases accordingly. Do not exceed the hitch rating weight, GVWR or GCWR.

IMPORTANT—PLEASE READ

Product information, photography and illustrations included in this publication were as accurate as possible at the time of printing. For further product information and changes, please visit our website at www.fleetwoodrv.com or contact your local Fleetwood RV dealer. Prices, materials, design and specifications are subject to change without notice. All weights, fuel, liquid capacities and dimensions are approximate. Fleetwood RV has designed its recreational vehicles to provide a variety of uses for customers. Each vehicle features optimal seating, sleeping, storage and fluid capacities. The user is responsible for selecting the proper combination of loads (i.e., occupants, equipment, fluids, cargo, etc.) to ensure that the vehicle's capacities are not exceeded.

CONTACT US

To locate a dealer near you, visit our website at www.fleetwoodrv.com or call 1-800-322-8216. We can also be contacted at Fleetwood RV Customer Relations, P.O. Box 1007, Decatur, IN 46733.



** All 2014 Fleetwood RV motorhomes include a 1-year emergency roadside assistance membership. For complete info, see your Fleetwood RV dealer.

©2013 Fleetwood RV Inc. Printed in USA.
 Inventory Control Number PRO14F1, 08/13. Model Year 2014, First Edition.

