

SOUTHWIND® 2014

CLASS A GAS | **FLEETWOOD RV**



Champagne Shimmer



Pewter Mist

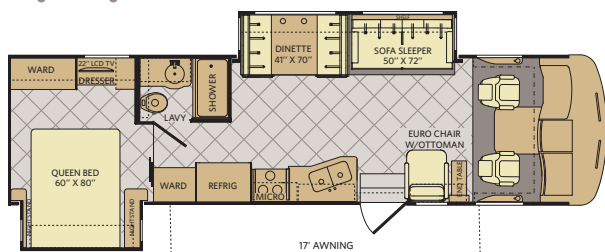


Sandstone Mist

TOP FEATURES

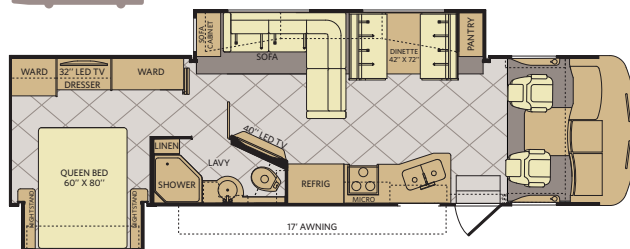
- Sony® A/V Electronics
- Sony® LED TVs (Living Area)
- Sony® Blu-ray® Surround Sound System (Optional)
- Exterior Entertainment Center (Optional - Select Models)
- One-Piece Panoramic Windshield
- 7' Interior Ceiling Height
- Soft-Touch Vinyl Ceiling
- Composite Tile Flooring Throughout
- 22.5" Aluminum Wheels
- Power Platform® Chassis Construction
- 4-Point Auto Hydraulic Leveling Jacks
- Automotive Dash w/Passenger PC Workstation
- Exclusive Dream Easy Mattress

32VS



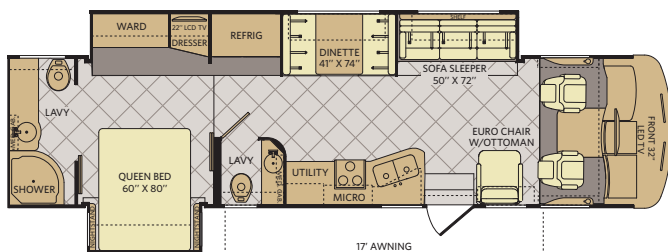
Available options: 087, 113, 192, 345, 490, 830, 833, 855

34A



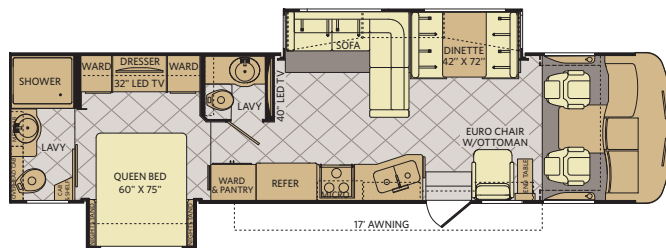
Available options 087, 093, 113, 126, 139, 830, 833, 852, 855

36D



Available options 113, 126, 192, 490, 830, 833, 855

36L



Available options 087, 093, 113, 126, 490, 830, 855

OPTIONS



OPT. 087
FRONT 32"
LED TV



OPT. 093
EXTERIOR
ENTERTAINMENT
CENTER



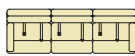
OPT. 345
MID-SHIP
40" LED TV



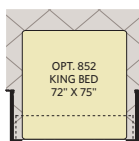
OPT. 113
3-BURNER
COOKTOP
W/OVEN



OPT. 139
ELECTRIC FIREPLACE



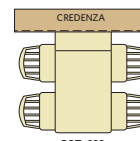
OPT. 192
SOFA SLEEPER
W/AIR MATTRESS
& FOOTREST



OPT. 852
KING BED
72" X 75"



OPT. 855
QUEEN BED
W/AIR
60" X 80"



OPT. 833
FREE-STANDING DINETTE
WITH CREDEZA



OPT. 126
WASHER/DRYER



OPT. 490
FREE STANDING
RECLINER



OPT. 830
FACING DINETTE

WEIGHTS & MEASUREMENTS

CHASSIS MODELS	POWER PLATFORM®			
	32VS	34A	36D	36L
Engine Displacement (liters)	6.8	6.8	6.8	6.8
Wheelbase (inches)	208"	208"	228"	228"
GVWR (lbs) ¹	22,000	22,000	22,000	22,000
Front GAWR (lbs) ²	8,000	8,000	8,000	8,000
Rear GAWR (lbs) ²	15,000	15,000	15,000	15,000
GCWR (lbs) ³	26,000	26,000	26,000	26,000
Hitch Rating Weight (lbs) ¹	5,000	5,000	5,000	5,000
Tongue Weight (lbs) ¹	500	500	500	500
Fuel Capacity (gal)	80	80	80	80

POWER PLATFORM® CHASSIS

Model: Ford®
Engine: 6.8L Triton V10
Transmission: Ford, 5-Speed, Automatic w/Overdrive

Alternator: 175 Amp
Torque: 457 lb-ft @ 3,250 RPM
Horsepower: 362HP

DIMENSIONS & CAPACITIES

MODELS	32VS	34A	36D	36L
Overall Length ⁴	33' 5"	34' 11"	36' 5"	36' 11"
Overall Height (with A/C)	12' 10"	12' 10"	12' 10"	12' 10"
Overall Width (maximum) ^{5, 6}	102"	102"	102"	102"
Interior Height (maximum)	84"	84"	84"	84"
Interior Width (maximum)	96"	96"	96"	96"
Interior Storage (cu. ft.)	144	123	145	140
Exterior Storage (cu. ft.)	112	115	105	118
Fresh Water Holding Tank (gal)	80	80	80	80
Grey Water Holding Tank (gal)	58	58	58	58
Black Water Holding Tank (gal)	42	42	42	42
Appliance Propane Tank (gal) (WC) ⁷	25	25	25	25
Water Heater Tank (gal)	10	10	10	10



Visit FleetwoodRV.com or find Fleetwood RV Tablet apps in the App Store or Google Play.

Addendums

- GVWR (Gross Vehicle Weight Rating) is the maximum permissible weight of this fully loaded motorhome. The GVWR is equal to or greater than the sum of the (UVW) unloaded vehicle weight plus the (OCCC) occupant cargo-carrying capacity*.
- GAWR (Gross Axle Weight Rating) is the maximum permissible loaded weight a specific axle is designed to carry.
- GCWR (Gross Combined Weight Rating) is the value specified by the motorhome manufacturer as the maximum allowable loaded weight of this motorhome with its towed vehicle. Towing and braking capacities may be different. Refer to Fleetwood and chassis manufacturer's manuals for complete information.
- Length measured from front bumper to rear bumper (excludes accessories).
- Excludes safety equipment and awnings.
- Motorhomes feature a body width over 96" which will restrict your access to certain roads. Before purchasing, you should research any state and/or province road laws which may affect your usage.
- Tank manufacturer's listed water capacity (WC). Actual propane capacity is 80% of water listing as required by the safety code.

† The chassis manufacturer recommends the installation of a supplemental brake control system to activate the brakes on the vehicle or trailer you are towing. Hitch receiver ratings expressed are maximum for the hitch receiver installed and may require the purchase of additional equipment that is dependent on the weight of the towed load. Consult with hitch receiver manufacturer for further information.

* UVW and OCCC are found on the label containing the federal certification tag in each RV.

†† The Minimum Towable Load of this vehicle is the available weight capacity, up to GCWR, when the coach is fully loaded to maximum GVWR. However, if the coach is loaded to something less than maximum GVWR, that extra available weight capacity can be added to your Towable Load. For example, if your coach is loaded to 1000lbs less than maximum GVWR, your Towable Load increases accordingly. Do not exceed the hitch rating weight, GVWR or GCWR.

IMPORTANT—PLEASE READ

Product information, photography and illustrations included in this publication were as accurate as possible at the time of printing. For further product information and changes, please visit our website at www.fleetwoodrv.com or contact your local Fleetwood RV dealer. Prices, materials, design and specifications are subject to change without notice. All weights, fuel, liquid capacities and dimensions are approximate. Fleetwood RV has designed its recreational vehicles to provide a variety of uses for customers. Each vehicle features optimal seating, sleeping, storage and fluid capacities. The user is responsible for selecting the proper combination of loads (i.e., occupants, equipment, fluids, cargo, etc.) to ensure that the vehicle's capacities are not exceeded.

CONTACT US

To locate a dealer near you, visit our website at www.fleetwoodrv.com or call 1-800-322-8216. We can also be contacted at Fleetwood RV Customer Relations, P.O. Box 1007, Decatur, IN 46733.



** All 2014 Fleetwood RV motorhomes include a 1-year emergency roadside assistance membership. For complete info, see your Fleetwood RV dealer.

©2013 Fleetwood RV Inc. Printed in USA.

Inventory Control Number B14F1, 06/13. Model Year 2014, First Edition.

