

STORM[®] 2014

CLASS A GAS | **FLEETWOOD RV**



Blushing Bronze



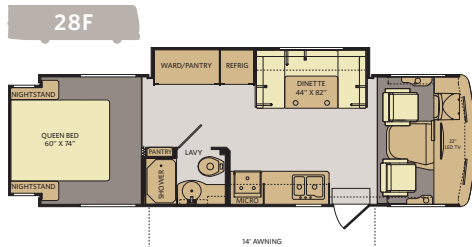
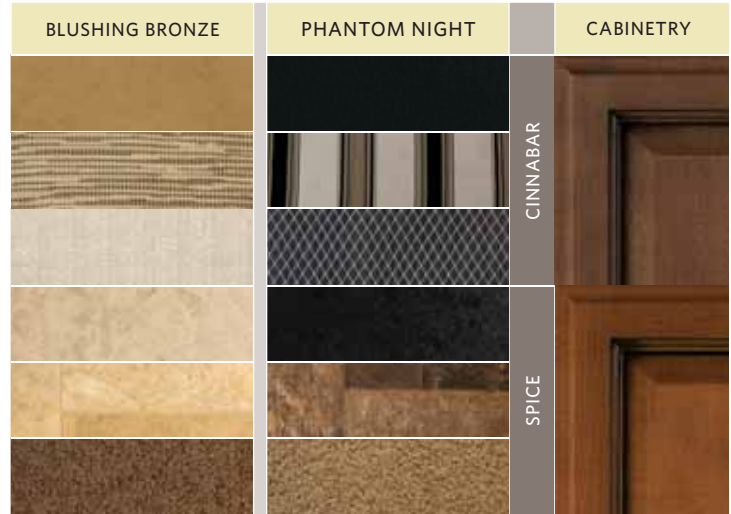
Phantom Night



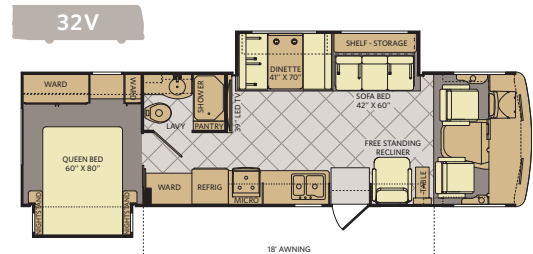
Red Velvet

TOP FEATURES

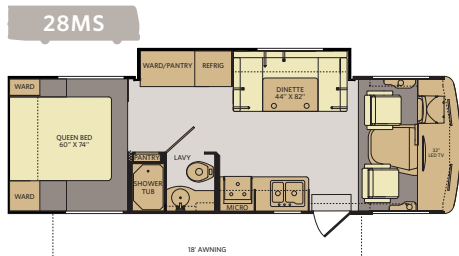
- Ford[®] 18,000lb chassis w/362HP V10
- One-Piece Windshield
- Hardwood Cabinet Doors w/ Hidden Hinges
- LED TVs
- Bunk Bed and Breakfast (32H)
- High-Gloss Exterior Fiberglass
- Hide-A-Loft Drop Down Queen Bed Optional
- Full Basement Storage
- Flexsteel[®] Furniture
- PEX Plumbing System
- Soft-Touch Ceiling
- Exclusive Dream Easy Mattress



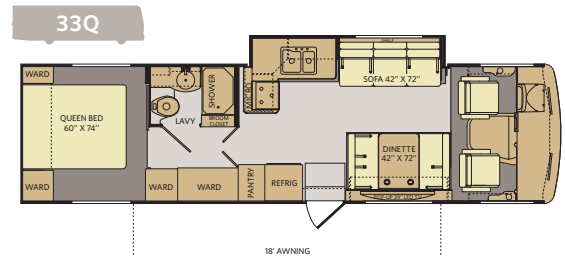
Available options: 084, 218, 351



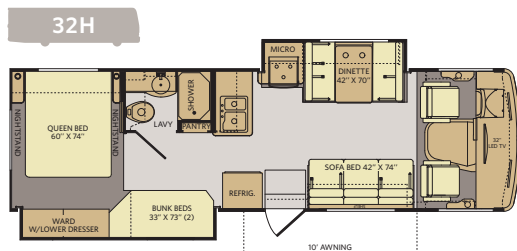
Available options: 084, 217



Available options: 084, 218, 351

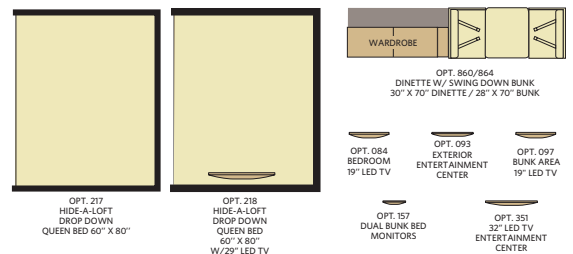


Available options: 084, 217



Available options: 084, 097, 157, 218, 351, 860/864

OPTIONS



WEIGHTS & MEASUREMENTS

CHASSIS MODELS	FORD®				
	28F	28MS	32H	32V	33Q
Engine Displacement (liters)	6.8	6.8	6.8	6.8	6.8
Wheelbase (inches)	178"	178"	190"	208"	208"
GVWR (lbs) ¹	18,000	18,000	18,000	18,000	18,000
Front GAWR (lbs) ²	7,000	7,000	7,000	7,000	7,000
Rear GAWR (lbs) ²	12,000	12,000	12,000	12,000	12,000
GCWR (lbs) ³	23,000	23,000	23,000	23,000	23,000
Hitch Rating Weight (lbs) ^{††}	5,000	5,000	5,000	5,000	5,000
Tongue Weight (lbs) [†]	500	500	500	500	500
Fuel Capacity (gal)	80	80	80	80	80

FORD® CHASSIS

Model: Ford®
Engine: 6.8L Triton V10
Transmission: Ford®, 5-Speed, Automatic w/Overdrive

Alternator: 175 Amp
Torque: 457 lb-ft @ 3,250 RPM
Horsepower: 362HP

DIMENSIONS & CAPACITIES

MODELS	28F	28MS	32H	32V	33Q
Overall Length ⁴	28' 8"	28' 8"	31'	32' 9"	33' 5"
Overall Height (with A/C)	12'	12'	12'	12'	12'
Overall Width (maximum) ^{5,6}	102"	102"	102"	102"	102"
Interior Height (maximum)	82"	82"	82"	82"	90"
Interior Width (maximum)	96"	96"	96"	96"	96"
Interior Storage Capacity CU. FT.	110	125	116	128	128
Exterior Storage Capacity CU. FT.	132	132	104	192	92
Fresh Water Holding Tank (gal)	60	60	60	60	60
Grey Water Holding Tank (gal)	35	35	35	37	37
Black Water Holding Tank (gal)	35	35	35	37	37
Appliance Propane Tank (gal) (WC) ⁷	14	14	14	14	14
Water Heater Tank (gal)	6	6	6	6	6



Visit FleetwoodRV.com or find Fleetwood RV Tablet apps in the App Store or Google Play.

Addendums

- GVWR (Gross Vehicle Weight Rating) is the maximum permissible weight of this fully loaded motorhome. The GVWR is equal to or greater than the sum of the (UVW) unloaded vehicle weight plus the (OCCC) occupant cargo-carrying capacity*.
- GAWR (Gross Axle Weight Rating) is the maximum permissible loaded weight a specific axle is designed to carry.
- GCWR (Gross Combined Weight Rating) is the value specified by the motorhome manufacturer as the maximum allowable loaded weight of this motorhome with its towed vehicle. Towing and braking capacities may be different. Refer to Fleetwood and chassis manufacturer's manuals for complete information.
- Length measured from front bumper to rear bumper (excludes accessories).
- Excludes safety equipment and awnings.
- Motorhomes feature a body width over 96" which will restrict your access to certain roads. Before purchasing, you should research any state and/or province road laws which may affect your usage.
- Tank manufacturer's listed water capacity (WC). Actual propane capacity is 80% of water listing as required by the safety code.

† The chassis manufacturer recommends the installation of a supplemental brake control system to activate the brakes on the vehicle or trailer you are towing. Hitch receiver ratings expressed are maximum for the hitch receiver installed and may require the purchase of additional equipment that is dependent on the weight of the towed load. Consult with hitch receiver manufacturer for further information.

* UVW and OCCC are found on the label containing the federal certification tag in each RV.

†† The Minimum Towable Load of this vehicle is the available weight capacity, up to GCWR, when the coach is fully loaded to maximum GVWR. However, if the coach is loaded to something less than maximum GVWR, that extra available weight capacity can be added to your Towable Load. For example, if your coach is loaded to 1000lbs less than maximum GVWR, your Towable Load increases accordingly. Do not exceed the hitch rating weight, GVWR or GCWR.

IMPORTANT—PLEASE READ

Product information, photography and illustrations included in this publication were as accurate as possible at the time of printing. For further product information and changes, please visit our website at www.fleetwoodrv.com or contact your local Fleetwood RV dealer. Prices, materials, design and specifications are subject to change without notice. All weights, fuel, liquid capacities and dimensions are approximate. Fleetwood RV has designed its recreational vehicles to provide a variety of uses for customers. Each vehicle features optimal seating, sleeping, storage and fluid capacities. The user is responsible for selecting the proper combination of loads (i.e., occupants, equipment, fluids, cargo, etc.) to ensure that the vehicle's capacities are not exceeded.

CONTACT US

To locate a dealer near you, visit our website at www.fleetwoodrv.com or call 1-800-322-8216. We can also be contacted at Fleetwood RV Customer Relations, P.O. Box 1007, Decatur, IN 46733.



** All 2014 Fleetwood RV motorhomes include a 1-year emergency roadside assistance membership. For complete info, see your Fleetwood RV dealer.

©2013 Fleetwood RV Inc. Printed in USA.
 Inventory Control Number ST14F2, 09/13. Model Year 2014, Second Edition.

