

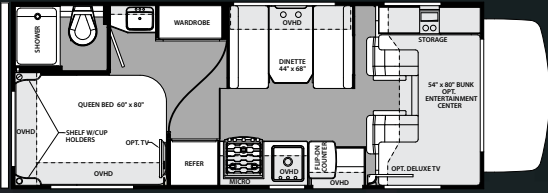
# Forester

by Forest River

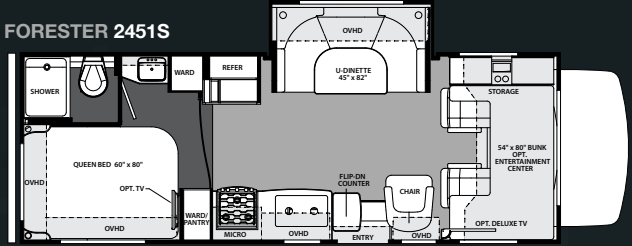


# FLOORPLAN OPTIONS

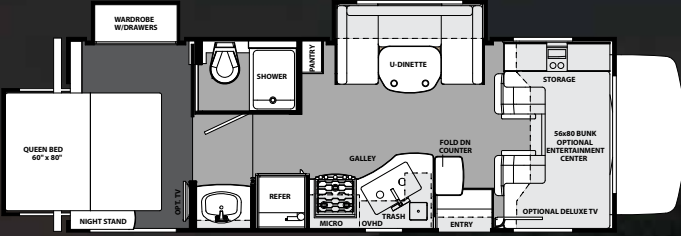
**FORESTER 2301**



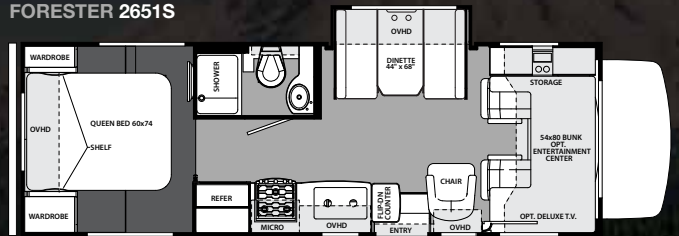
**FORESTER 2451S**



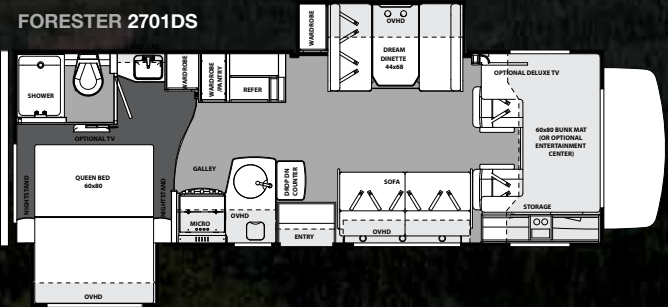
**FORESTER 2501TS**



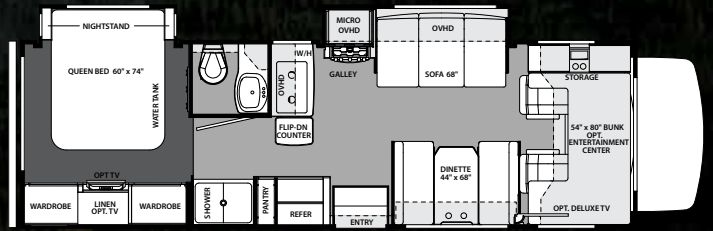
**FORESTER 2651S**



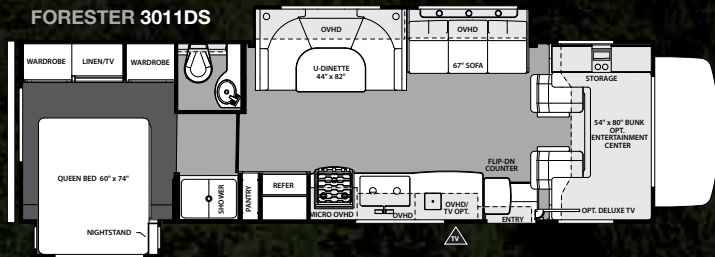
**FORESTER 2701DS**



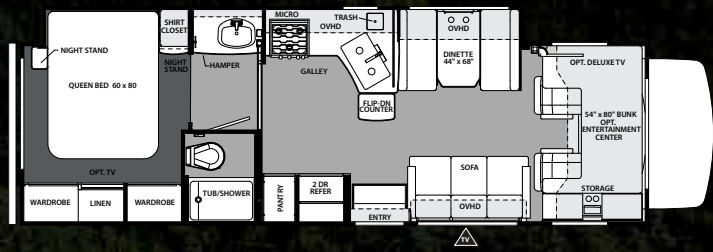
**FORESTER 2861DS**



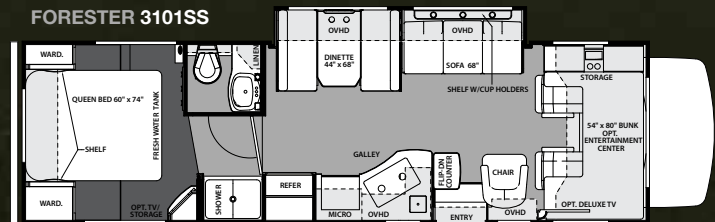
**FORESTER 3011DS**



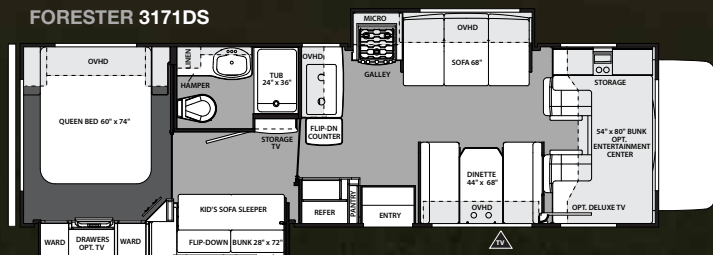
**FORESTER 3051S**



**FORESTER 3101SS**



**FORESTER 3171DS**





## FORESTER STANDARDS & OPTIONS

### WARRANTY:

#### STANDARD FEATURES

- 12 Months/12,000 mile basic limited warranty
- Bumper-to-bumper 3 years/36,000 mile limited chassis warranty
- 5 years/60,000 mile limited powertrain warranty (Ford)
- 5 years/100,000 mile limited powertrain warranty (Chevy)

### SYSTEMS:

#### STANDARD FEATURES

- Battery disconnect
- Water heater bypass kit
- (2) Deep cycle coach batteries
- 30 amp, 12 volt distribution panel & 30' power cord
- 55 amp, 12 volt power converter
- Six gallon gas/electric electronic ignition DSI water heater
- 30,000 BTU electronic ignition furnace
- Emergency start
- Cable TV jack
- 13.5K BTU ducted roof air conditioner
- 4.0 KW Onan Microquiet generator
- Generator auto transfer switch
- One year CoachNet service
- Firestone Ride-Rite air assist suspension
- Water filtration system

#### OPTIONAL FEATURES

- 15K BTU air conditioner with heat pump
- Automatic HD Satellite w/ Dish Receiver
- Arctic package

### EXTERIOR:

#### STANDARD FEATURES

- 2" laminated Gel Coat sidewalls, vacuum bonded with aluminum frame structure, steel backers & block foam insulation
- A & E electric awning
- Fiberglass front cap w/LED lights
- A & E slide out awnings
- Fiberglass roof
- Stainless steel wheel liners
- Lockable rotocast pass-through storage compartments
- Patio light
- Entry door with screen door & dead bolt door lock
- Fiberglass running boards
- All radius style exterior doors
- Entry assist handle
- Heated and enclosed holding tanks
- Heated and enclosed "Easy Dump" valve dump stations
- 110 volt, GFI protected exterior receptacle
- Tinted sliding windows
- Deluxe break-away mirrors
- 7,500 lb. tow hitch with 7-pin connector (5,000 lb. on 2301 & All Chevy chassis)
- Spare tire
- Roof ladder
- Outside shower
- Exterior security light
- Incorporated entry step
- "Easy-Access" battery compartment in entry step
- Exterior skirt paint package

#### OPTIONAL FEATURES

- Bigfoot hydraulic automatic leveling jacks
- Deluxe heated/remote exterior mirrors
- Sideview cameras (must option back-up camera)
- Full body paint
- 32" Outside 12 volt TV with DVD/CD player and speakers (2701DS, 3011DS, 3051S & 3171DS only)
- Black tank flush
- Exterior grill with quick connect (Std. 2861DS)

### CAB AREA:

#### STANDARD FEATURES

- 7" touch-screen AM/FM radio w/ CD, DVD USB, AUX, weather band and Bluetooth

- Cab area privacy curtains
- Power windows and door locks
- Keyless entry (Ford chassis only)

#### OPTIONAL FEATURES

- Color back-up camera with monitor
- Ultra-leather driver/passenger seats
- GPS navigation system & iPod dock
- Woodgrain dash
- Swivel driver's seat
- Swivel passenger seat

### GALLEY AREA:

#### STANDARD FEATURES

- High-neck faucet
- Three burner range with oven
- Sink cover
- 6 cu. ft. refrigerator/freezer
- Range hood with fan and light
- Residential-style drawer construction with solid wood fronts and ball-bearing drawer guides
- Microwave oven (N/A 3051S)
- Flip-up countertop extension
- Sink cover
- Raised wood refrigerator panels (N/A 4 door refer)

#### OPTIONAL FEATURES

- Convection microwave (No oven) (Std. 3051S)
- 12.3 cu. ft. four door refrigerator with ice maker (2861DS, 3011DS & 3051S only)

### BATHROOM AREA:

#### STANDARD FEATURES

- Large medicine cabinet with mirrored cabinet doors
- Deep sink with dual control faucet
- Porcelain toilet
- Frosted glass shower door
- Bath amenity package (towel bar, tissue, toothbrush & soap holder)
- Electric roof vent fan
- Wall mount mirror
- Molded ABS shower pan & surround
- Shower head with flexible hose extension
- Shower skylight

### BEDROOM AREA:

#### STANDARD FEATURES

- Upgraded Serta Eurotop mattress (N/A 2501TS, 2701DS)
- Bedspread with pillow shams
- Night shades with privacy window treatments
- Cedar lined wardrobe and drawers

#### OPTIONAL FEATURES

- Flat Panel TV w/ DVD (12v)
- Desk and wardrobe IPO bunk beds (3171DS)

### LIVING ROOM AREA:

#### STANDARD FEATURES

- "Soft touch" vinyl padded ceilings with ducted air
- Glass light fixtures with LED bulbs throughout interior
- Cherry or maple wood cabinetry throughout with raised panel doors and hidden hinges
- Rubbed bronze handles
- Dream dinette (not available with U-shaped dinette)
- Ultra leather sofa
- 2-way sofa with convertible sleeping & removable arms
- Night shades with window treatments
- 7' ceiling height
- Convenience center
- Visionary pull out sofa (3011DS)

#### OPTIONAL FEATURES

- Cab over entertainment center with 42" TV
- Cab-Over entertainment center w/ 32" TV (12v) & twin beds
- 32" flat panel 12 volt side TV
- Surround sound with subwoofer
- Fantastic fan
- U-shaped dinette IPO standard dinette (2301)
- Sofa IPO dinette (2651S)
- Standard dinette or sofa IPO U-shape dinette (2501TS)

## 24/7 EMERGENCY ROADSIDE ASSISTANCE

For a worry-free ownership experience

# Coach-Net®

RV Technical & Roadside Assistance

Forest River includes one year of Coach-Net RV Technical & Roadside Assistance with each RV purchase. Whether new to the RV lifestyle or an experienced RV enthusiast, Forest River owners have 24/7 access to technical, operational and emergency road service coverage throughout the US & Canada. Coach-Net's fast, dependable service is just a phone call away.



### PRE-DELIVERY INSPECTION FACILITY

20,000 square feet of quality assurance. The bare essentials for a premium product. This state-of-the-art facility gives immediate daily feedback to production for quality assurance in every unit built.



Forest River, Inc. encourages our customers to purchase their Forest River products from a local dealership whenever possible for the following reasons:

- 1) Forest River, Inc. dealers are independently owned and operated businesses so priority service and scheduling is at their discretion and is often provided to customers that purchased their unit at that dealership.
- 2) Purchasing locally allows customers to establish meaningful relationships with a dealer, enhancing the RV experience through assistance with product questions, user tips or RV regulations for your state or country, and much more!
- 3) Canadian customers must meet requirements to bring an RV purchased out of the country to their home. These requirements may involve additional inspections and certifications, taxes and fees. Your local Canadian Dealer is a professional at meeting these requirements.
- 4) Scheduling timely warranty repairs and adjustments through a local dealership provides far greater flexibility and convenience to you, the customer!

It is the goal of Forest River, Inc. that all of our RV owners fully enjoy the RV experience and that customer satisfaction meets or exceeds their expectations!

For more information please visit:  
[www.forestriverinc.com/Forester](http://www.forestriverinc.com/Forester)

**FREE MEMBERSHIP**  
to Forest River Owners' Group

[www.forestriverfrog.com](http://www.forestriverfrog.com)



### Learn More

Scan this barcode using a QR Reader on your smart phone to learn more about Forest River.



A Berkshire Hathaway company.

YOUR FORESTER DEALER