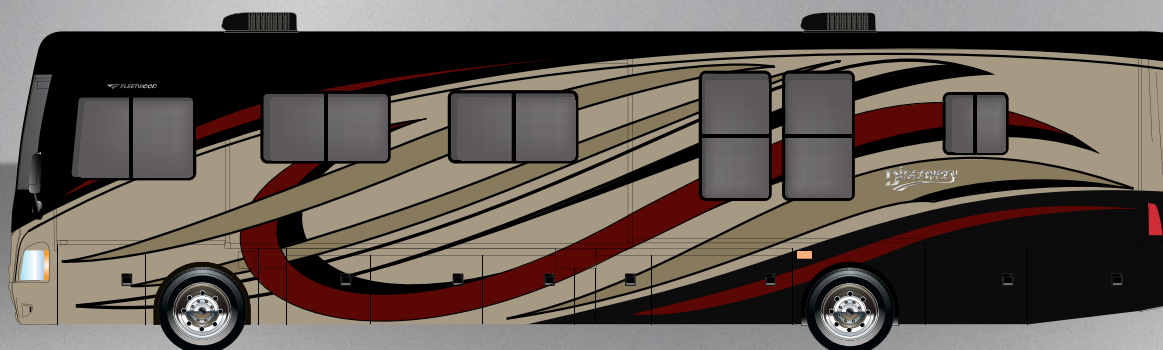
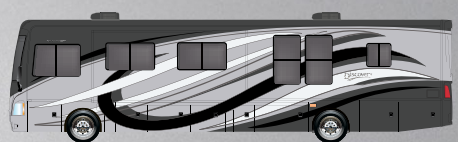


2015

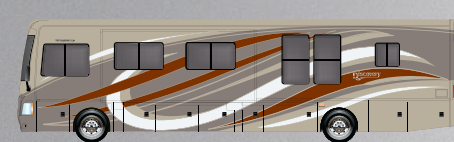
CLASS A DIESEL



TIMES SQUARE



VINTAGE STONE

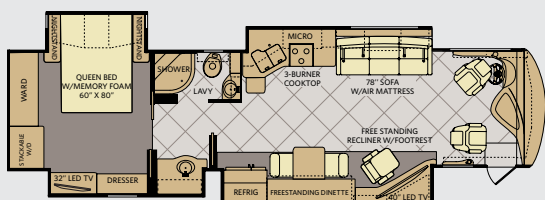


AUTUMN PECAN

TOP FEATURES

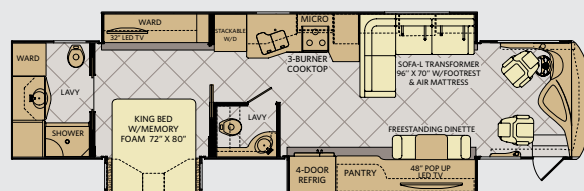
- 380HP Cummins® ISL9 Engine
- Molded Fiberglass Roof
- Sony® A/V Electronics
- Sony® LED TVs
- LED Lighting
- 8.0 kW Onan® Quiet Diesel Generator w/Slide
- High-Gloss 24x24 Porcelain Floor Tile
- Polished Solid Surface Countertops
- Hardwood Cabinet Doors/Drawers
- Double Roller Shades
- Side Swinging Luggage Doors
- 84" Interior Ceiling Height
- Optional Exterior Pull-Out Grill & Kitchenette
- Frameless Dual Pane Windows

37R



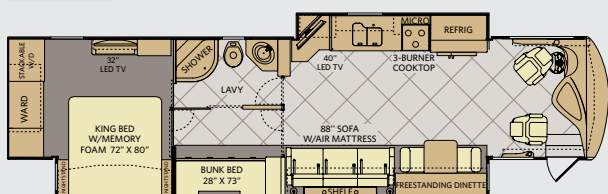
AVAILABLE OPTIONS: 087, 093, 107, 113, 139, 144, 191, 830, 854, 883,

40E



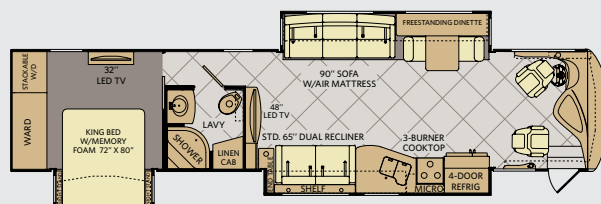
AVAILABLE OPTIONS: 087, 093, 107, 113, 144, 856

40G



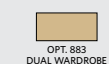
AVAILABLE OPTIONS: 087, 093, 107, 113, 144, 635, 830, 856, 867, 878

40X

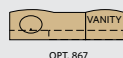


AVAILABLE OPTIONS: 087, 093, 107, 113, 144, 191, 627, 635, 830, 856

OPTIONS



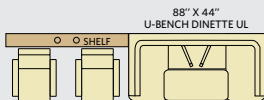
OPT. 883
DUAL WARDROBE



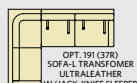
OPT. 867
VANITY W/SINK



OPT. 878
DESK



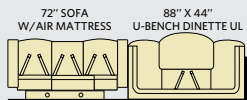
OPT. 627
U-SHAPED DINETTE/DUAL FS RECLINERS



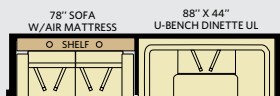
OPT. 191 (37R)
SOFA-L TRANSFORMER
ULTRALEATHER
W/JACK-KNIFE SLEEPER



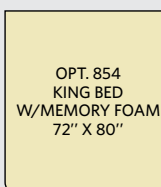
OPT. 830
FACING DINETTE



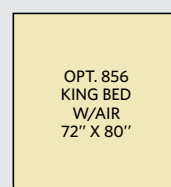
OPT. 635 (40G)
U-SHAPED DINETTE / SOFA



OPT. 635 (40X)
U-SHAPED DINETTE / SOFA



OPT. 854
KING BED
W/MEMORY FOAM
72" X 80"



OPT. 856
KING BED
W/AIR
72" X 80"

AUTUMN PECAN						CABINETRY
SOFA	ACCENT	BEDSPREAD	COUNTERTOP	FLOORING	CARPET	CINNABAR
TIMES SQUARE						SPICE
SOFA	ACCENT	BEDSPREAD	COUNTERTOP	FLOORING	CARPET	
VINTAGE STONE						
SOFA	ACCENT	BEDSPREAD	COUNTERTOP	FLOORING	CARPET	

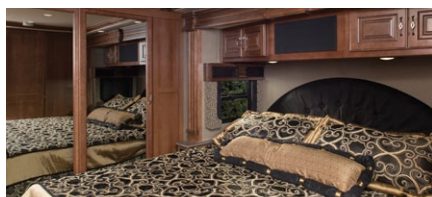
CHASSIS				
MODELS	37R	40E	40G	40X
Wheelbase (inches)	245"	276"	276"	276"
GVWR (lbs) ¹	33,400	33,400	33,400	33,400
Front GAWR (lbs) ²	12,400	12,400	12,400	12,400
Rear GAWR (lbs) ²	21,000	21,000	21,000	21,000
GCWR (lbs) ³	43,400	43,400	43,400	43,400
Hitch Rating Weight (lbs) ⁴	10,000	10,000	10,000	10,000
Tongue Weight (lbs) ⁵	1,000	1,000	1,000	1,000
Fuel Capacity (gal)	100	100	100	100

POWER BRIDGE® CHASSIS

Model: Freightliner® XCM Series
Engine: Cummins® ISL9
Transmission: Allison® 3000 MH 6-Speed
 w/Electronic Shifter

Alternator: Delco Remy 160 Amp
Torque: 1,150 lb-ft @ 1,400 RPM
Horsepower: 380HP

DIMENSIONS & CAPACITIES				
MODELS	37R	40E	40G	40X
Overall Length (inches) ⁴	38' 8"	41' 4"	41' 4"	41' 4"
Overall Height (with A/C)	12' 10"	12' 10"	12' 10"	12' 10"
Overall Width (maximum) ^{5, 6}	102"	102"	102"	102"
Interior Height (maximum)	84"	84"	84"	84"
Interior Width (maximum)	96"	96"	96"	96"
Interior Storage (cu. ft.)	163	197	166	197
Patio Awning Width	14'	13'	19' 6"	14' 6"
Exterior Storage (cu. ft.)	126	208	208	208
Fresh Water Holding Tank (gal)	100	100	100	100
Grey Water Holding Tank (gal)	75	75	75	75
Black Water Holding Tank (gal)	50	50	50	50
Appliance Propane Tank (gal) (WC) ⁷	38.7	38.7	38.7	38.7
Water Heater Tank (gal)	10	10	10	10



Visit FleetwoodRV.com or find FleetwoodRV tablet apps in the App Store and Google Play.

DISCOVERY 37R SHOWN IN TIMES SQUARE DÉCOR WITH CINNABAR WOOD CABINETRY

Addendums

- GVWR (Gross Vehicle Weight Rating) is the maximum permissible weight of this fully loaded motorhome. The GVWR is equal to or greater than the sum of the (UVW) unloaded vehicle weight plus the (OCCC) occupant cargo-carrying capacity*.
- GAWR (Gross Axle Weight Rating) is the maximum permissible loaded weight a specific axle is designed to carry.
- GCWR (Gross Combined Weight Rating) is the value specified by the motorhome manufacturer as the maximum allowable loaded weight of this motorhome with its towed vehicle. Towing and braking capacities may be different. Refer to Fleetwood and chassis manufacturer's manuals for complete information.
- Length measured from front bumper to rear bumper (excludes accessories).
- Excludes safety equipment and awnings.
- Motorhomes feature a body width over 96" which will restrict your access to certain roads. Before purchasing, you should research any state and/or province road laws which may affect your usage.
- Tank manufacturer's listed water capacity (WC). Actual propane capacity is 80% of water listing as required by the safety code.

† The chassis manufacturer recommends the installation of a supplemental brake control system to activate the brakes on the vehicle or trailer you are towing. Hitch receiver ratings expressed are maximum for the hitch receiver installed and may require the purchase of additional equipment that is dependent on the weight of the towed load. Consult with hitch receiver manufacturer for further information.

* UVW and OCCC are found on the label containing the federal certification tag in each RV.

†† The Minimum Towable Load of this vehicle is the available weight capacity, up to GCWR, when the coach is fully loaded to maximum GVWR. However, if the coach is loaded to something less than maximum GVWR, that extra available weight capacity can be added to your Towable Load. For example, if your coach is loaded to 1000lbs less than maximum GVWR, your Towable Load increases accordingly. Do not exceed the hitch rating weight, GVWR or GCWR.

IMPORTANT—PLEASE READ

Product information, photography and illustrations included in this publication were as accurate as possible at the time of printing. For further product information and changes, please visit our website at www.fleetwoodrv.com or contact your local Fleetwood RV dealer. Prices, materials, design and specifications are subject to change without notice. All weights, fuel, liquid capacities and dimensions are approximate. Fleetwood RV has designed its recreational vehicles to provide a variety of uses for customers. Each vehicle features optimal seating, sleeping, storage and fluid capacities. The user is responsible for selecting the proper combination of loads (i.e., occupants, equipment, fluids, cargo, etc.) to ensure that the vehicle's capacities are not exceeded.

CONTACT US

To locate a dealer near you, visit our website at www.fleetwoodrv.com or call 1-800-322-8216. We can also be contacted at Fleetwood RV Customer Relations, P.O. Box 1007, Decatur, IN 46733.

** All 2015 Fleetwood RV motorhomes include a 1-year emergency roadside assistance membership. For complete info, see your Fleetwood RV dealer.

©2014 Allied Recreation Group Inc. Printed in USA.
 Inventory Control Number DIS15F1, 05/14. Model Year 2015, First Edition.

2015

CLASS A DIESEL

