

# *Sandpiper*



SELECT SERIES

# FIFTH WHEELS

DESTINATION SERIES











# Thank You!

At Sandpiper we appreciate our loyal customers, and want to say "Thank You". To future customers, we would like to extend to you an invitation to become part of the Sandpiper family and experience camping the Sandpiper way.



Upload a photo of you and your Sandpiper on our Facebook page keyword "Sandpiper RV's"

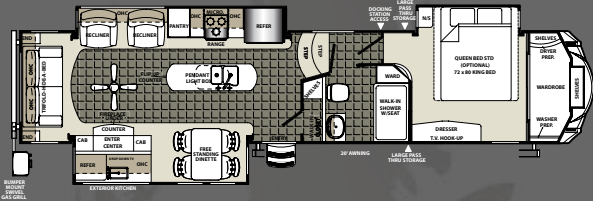






# Sandpiper

## 35ROK



The 35ROK is the ultimate couple's floorplan. In the spacious rear living, the rocker recliners sit directly across from the TV for easy viewing. The kitchen is filled with ample storage space and luxurious countertops to satisfy a full time lifestyle. On the outside, the exterior kitchen comes standard with a drop down flat screen TV. When not in use, it can be out of the way for access to your cabinet space.





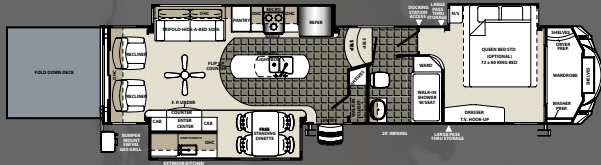


OPTIONAL SCREEN ROOM



# Sandpiper

## 360PDEK



Imagine stepping out in the morning and having a cup of coffee and watching the sun rise on your very own patio! And you're camping. This industry first floorplan is just another example of luxurious living offered by Sandpiper. The "Party Deck" has a 1500# capacity and even has stairs to exit the rear end! Optional equipment is either the screen room or the deck awning.



360PDEK | WALNUT INTERIOR



SHOWN WITH OPTIONAL TV







# Sandpiper

## 371REBH



The 371REBH is the ultimate floorplan for the family with children that doesn't want to give up their valuable living room area. Equipped with 2 recliners and a pop-up LED HDTV, premium sound bar and Sony DVD player this floorplan delivers the true comfort of home. Don't forget that mom and dad's retreat is the master suite at the other end of the unit!









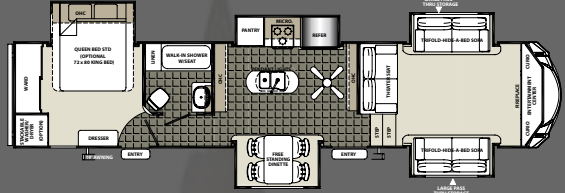


SHOWN WITH OPTIONAL ULTIMATE PACKAGE



# Sandpiper

## 377FLIK

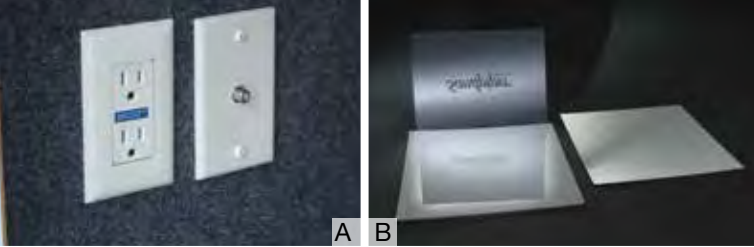


The 377FLIK leaves nothing out when it comes to entertainment. While you're inside enjoying the abundant living area, notice the seating is directly across from the LED HDTV. In the kitchen the storage is endless with more countertop space than ever offered before. The bedroom also offers abundant storage with a mirrored wardrobe, tall vanity, overhead cabinets and convenient shoe storage at the foot of the bed.





# TAKE CAMPING TO THE NEXT LEVEL.



A B



C D



E F



G H



I J



K L



## EXTERIOR FEATURES

**A.** 110v outlet and cable outlet conveniently located in the pass-thru storage area.

**B.** Gel coat fiberglass protects from UV rays and prevents yellowing and cracking.

**C.** Sandpiper's command center allows you to monitor tanks and other systems quickly and easily.

**D.** Optional under mount exterior storage bin keeps commonly used items close at hand.

**E.** Heated and enclosed underbelly protects your coach and improved airflow allows for a sturdier ride.

**F.** Insulated heavy duty Slam Lock baggage doors.

**G.** Sandpiper's control panel allows you to monitor tanks and other systems quickly and easily.

**H.** Drip rail with extra long drip spouts that help prevent black streaking.

**I.** Optional hydraulic wide stance power front jacks.

**J.** The quick connect spray port is great for easy clean up.

**K.** Contemporary aluminum rims with E-rated radial tires.

**L.** Control the temperature with the dual zone Dometic® thermostat.





## INTERIOR FEATURES

**A.** Handcrafted fascia gives the slide-out a distinguished look.

**B.** Serta™ Memory Foam mattress is a Forest River exclusive feature.

**C.** LED HDTV with premium soundbar and Sony DVD player

**D.** The Tri-fold hide-a-bed sofa offers you and your guests more sleeping options.

**E.** Contemporary ceiling fan.

**F.** Real wood drawers on soft close, full extension ball bearing drawer guides

**G.** Enjoy the warmth and comfort of the electric fireplace.

**H.** Raised panel cabinet doors and crown molding can be found in the kitchen.

**I.** The Sandpiper Signature package includes stainless steel appliances

**J.** Relax in comfort in a your rocker recliner. (Standard per floorplan).

**K.** Theater seating with footrests and console (per floorplan).

**L.** Porcelain foot flush toilet, easy to use, easy to clean.

# Sandpiper



A B



C D



E F



G H



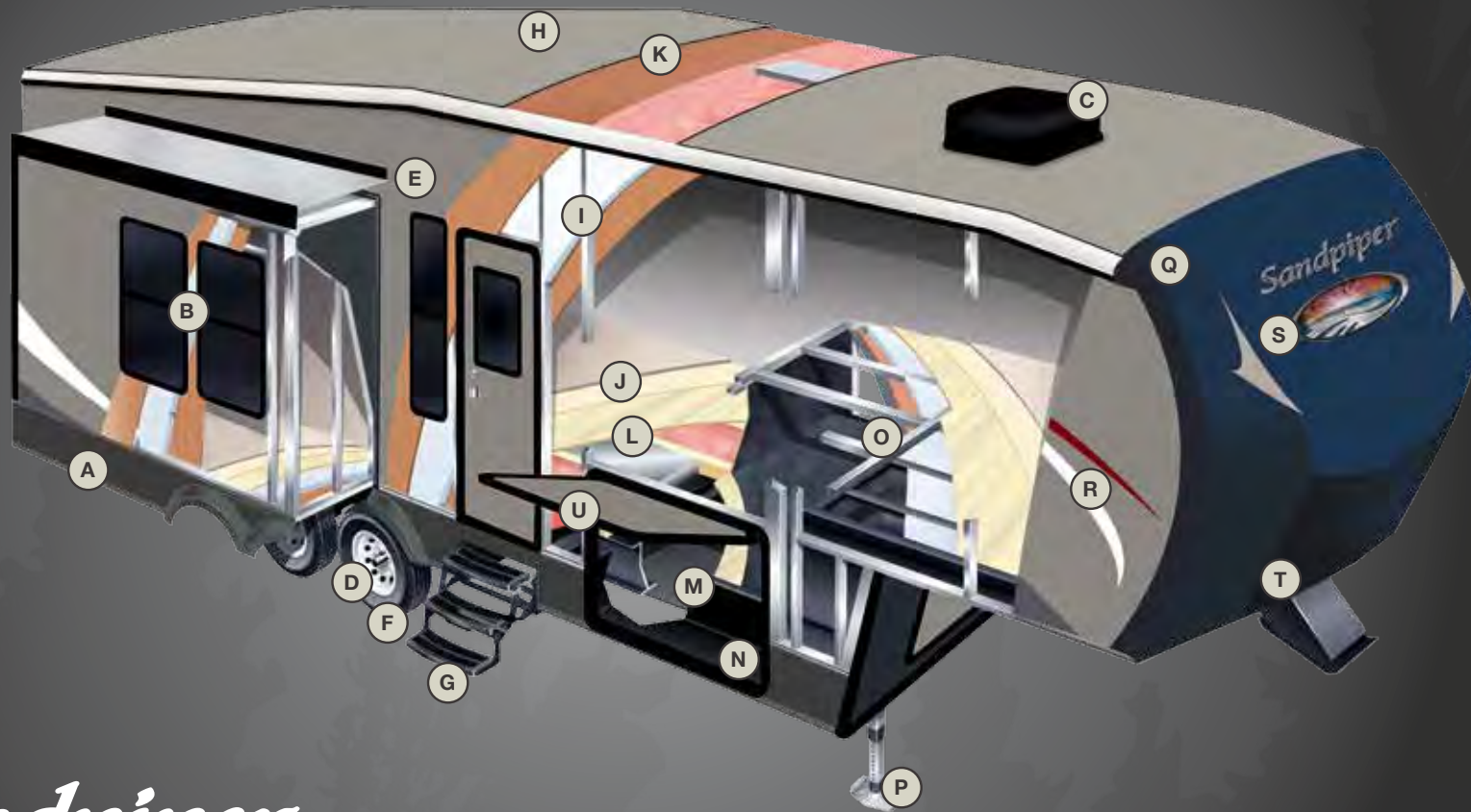
I J



K L







# *Sandpiper*

## BUILT TO LAST.

The Sandpiper is built to last using only the best materials to ensure that your coach is in it for the long haul. Careful engineering, well appointed craftsmanship and an uncompromising sense of pride go into every fifth wheel that we produce. Rest assured that your Sandpiper is built for Luxury Living.

- |   |   |   |
|---|---|---|
| <p>A. ROLLED ALUMINUM SIDE SKIRTING</p> <p>B. TINTED SAFETY GLASS WINDOWS (80%)</p> <p>C. DUAL ZONE DUCTED 15K BTU AIR CONDITIONING</p> <p>D. DEXTER AXLES WITH AUTO ADJUST BRAKES</p> <p>E. LAMINATED VACUUM BONDED ALUMINUM SIDEWALLS</p> <p>F. E-RATED RADIAL TIRES</p> <p>G. HICKORY SPRINGS RADIUS ENTRY STEPS</p> | <p>H. COLOR MATCHED SEAMLESS RUBBER ROOF (12 YR. WARRANTY)</p> <p>I. 2" BLOCK FOAM INSULATION</p> <p>J. SHAW R2X STAIN RESISTANT CARPET WITH PADDING</p> <p>K. 3/8" ROOF DECKING (FULL WALK-ON ROOF)</p> <p>L. 5/8" TONGUE AND GROOVE PLYWOOD FLOORING</p> <p>M. ENCLOSED, HEATED UNDERBELLY</p> <p>N. I-BEAM POWDER-COATED FRAME W/ RUST INHIBITOR</p> | <p>O. ALUMINUM LAMINATED &amp; INSULATED BATH DECK</p> <p>P. POWER FRONT JACKS WITH QUICK RELEASE SNAP PINS (HYDRAULIC OPTIONAL)</p> <p>Q. SLEEK RADIUS ROOF</p> <p>R. PAINTED COLOR MATCHED HIGH GLOSS GEL-COATED FIBERGLASS EXTERIOR</p> <p>S. FRONT GEL-COAT FIBERGLASS CAP (STANDARD)</p> <p>T. IMPROVED FRONT CAP FOR SHARPER TURNING RADIUS</p> <p>U. INSULATED SLAM LOCK BAGGAGE DOORS</p> |
|---|---|---|



# STANDARDS AND OPTIONS

## EXTERIOR FEATURES

- Color match high gloss gel coated colored exterior fiberglass
- Painted aerodynamic fiberglass front cap with improved turning radius
- Docking station: easy winterization, hot and cold spray port, black tank flush, pull valves for tanks
- Enclosed and heated dump valves
- Large tinted windows with 80/20 UV prohibitor
- Hickory Springs® radius triple steps with 9" riser (no pinched fingers)
- "One Touch" Dometic® electric awning w/LED light strip
- Power front jacks with spring loaded snap pins
- 16" Radial tires-E Rated
- Automotive-style fender skirts
- Hitch light
- Exterior refrigerator (per floorplan)
- Porch light with interior switch
- 30 lb. double LP tanks with auto change over
- Roof ladder
- 2 exterior speakers
- Rain gutters with extra long drip spouts (prevents black streaking)
- Insulated heavy duty slam lock baggage doors
- Exterior foldable grab handle and 110V outlet
- Unobstructed pass-through storage area with cable jacks
- 2 spray ports with 25' hose (one on each side)
- Upgraded aluminum rims
- 7,000 Lb. axles
- Friction hinge entry door

## INTERIOR FEATURES

- 84" interior height with 6'4" slide heights
- Stainless steel appliances

- Beauflor® tile look linoleum
- Real stone backsplash
- Four color coordinated interiors (Granite, Pecan, Pewter, Walnut)
- Soft close full extension drawer glides
- Stone cast under mounted kitchen sink
- Washer/Dryer prep
- Handmade cabinetry with screwed lumber core stile construction
- LED lighting throughout
- Residential countertops
- Recessed residential lighting
- Colored shower surround with etched tile pattern
- Upgraded adjustable shower head with shelf
- Accent paneling in slideouts
- Accent lighting over dinette
- Walk-in shower with seat (most models)
- Crown molding over kitchen cabinets
- Extra large picture windows throughout
- Vented side windows in slideouts
- TV antenna with booster
- Solid wood drawer fronts with birch sides
- Upgraded raised panel cabinet doors with designer rails
- Bedroom slideout fascia
- Serta® memory foam mattress
- 40" flat screen LED HDTV
- Premium soundbar with Sony® DVD player
- Designer window treatment accented per decor
- 9 cu. ft. stainless refrigerator
- Ceiling fan
- Tri-fold hide-a-bed sofa
- Residential stain resistant carpet
- Center mounted A/C unit for even cooling
- Quilted bedspread
- Trash receptacle in kitchen

## APPLIANCES/SYSTEMS

- Dual zone ducted Dometic® 15K A/C with quick cool (second A/C prep)
- 9 cu. ft. refrigerator
- Dual zone thermostat for living room and bedroom A/C
- Floor ducted 35,000 BTU furnace
- Whirlpool® OTR microwave
- Three burner High output range with 22" oven
- Interior monitor panel for holding tanks
- Interior thermostat for heating and cooling
- Flush floor hydraulic slideouts (per floorplan)
- Daul battery prep
- Satellite and cable hookup with RG-6 cable for high quality picture
- Porcelain foot flush toilets
- Full coach water filtration system
- 10 Gal. DSI water heater
- 65 Amp converter
- Fantastic fan in bath

## CONSTRUCTION

- Welded aluminum-framed, vacuum bonded laminated superstructure
- Laminated and fully insulated bathroom floor deck
- 2" x 3" floor joists 12" on center
- 5/8" tongue & groove plywood floor decking
- 3/8" roof decking (full walk-on roof)
- Cambered powder coated frame with rust prohibitor
- Fully enclosed heated underbelly
- 5" truss roof rafters
- R-10e sidewall construction
- Laminated sidewalls
- Laminated slideout walls

## POPULAR OPTIONS

- Hydraulic front jacks
- Electric rear jacks
- 6 point hydraulic leveling system
- King bed
- Solid surface countertops in kitchen
- Free-standing dinette with 4 chairs
- Washer and dryer (per floorplan)
- Sofa IPO bottom bunk (per floorplan)
- Second air conditioner-bedroom
- Fantastic fan with power hood operated with wall switch
- 12 Volt heated holding tanks
- Equaflex® equalizer system
- Party couch dinette
- Beauflor® rustic wood plank linoleum
- Central vacuum
- R-38e insulation

## FOR YOUR SAFETY

- Smoke alarm
- Fire extinguisher
- Breakaway switch (battery hook-up required)
- Dead-bolt lock on entry door
- LP/CO<sub>2</sub> gas detector
- Fire escape windows

## POLAR TECH PACKAGE

- Thermal pane windows
- Heated holding tanks
- R-38e roof & all floors insulation
- 40K BTU furnace
- Double fiberglass insulation in roof & floor

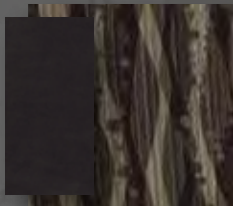
## ULTIMATE PACKAGE (limited time offer)

- Premium solid surface kitchen countertops
- Wide stance hydraulic landing gear
- 20 cu. ft. stainless Whirlpool® French door residential refer w/1,000 watt inverter and battery disconnect
- Hydraulic slide selector switches

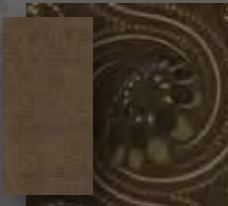
## SANDPIPER SIGNATURE PACKAGE

- 9 cu. ft. stainless refrigerator
- Residential stain resistant carpet
- Stainless appliance package
- Slam lock baggage doors
- Serta® memory foam mattress
- 15K air conditioner
- Whirlpool™ OTR microwave
- Wire and brace for 2nd A/C (ducted)
- Real stone back splash
- Residential pullout kitchen faucet
- Soft close residential drawers
- 10 Gal. G/E water heater w/DSI
- Docking station
- 16" Spare tire kit
- High gloss color matched gelcoated Fiberglass exterior
- Aluminum wheels with 7000 lb. axles
- 40" LED HDTV
- Washer/dryer prep
- Premium sound bar with Sony® DVD player
- 10,000 Gallon water filter system
- Fantastic fan in bathroom
- Designer tile Beauflor™
- Tri fold hide-a-bed
- Aerodynamic fiberglass painted front cap
- "One Touch" Dometic® electric awning w/LED light strip
- LED interior lighting throughout

## DECOR OPTIONS



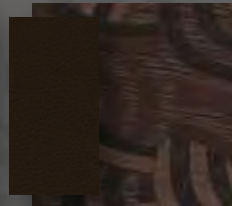
GRANITE INTERIOR



PEWTER INTERIOR

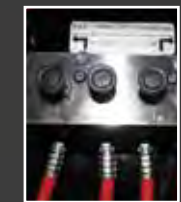


PECAN INTERIOR



WALNUT INTERIOR

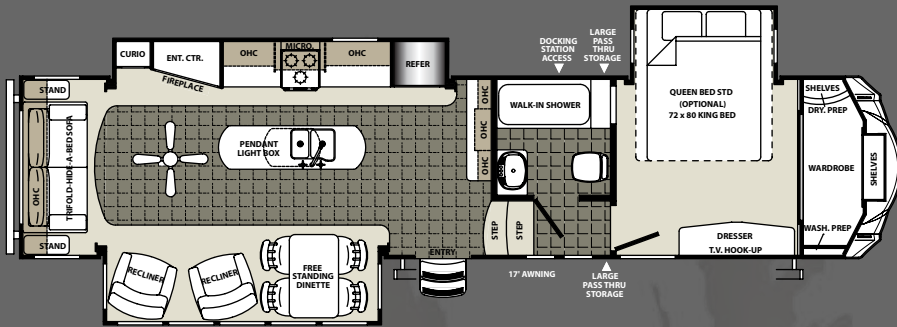
## ULTIMATE PACKAGE (limited time offer)



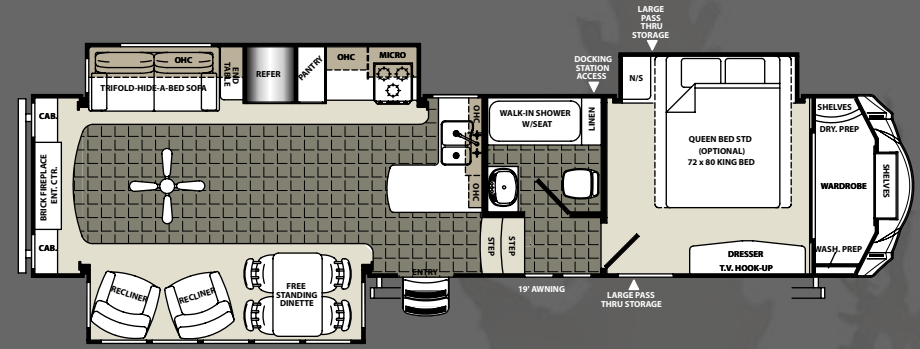
20 cu. ft. Stainless Steel refrigerator with 1000 watt inverter and battery disconnect, solid surface kitchen countertops, wide stance hydraulic front jacks and dedicated slide switch center.



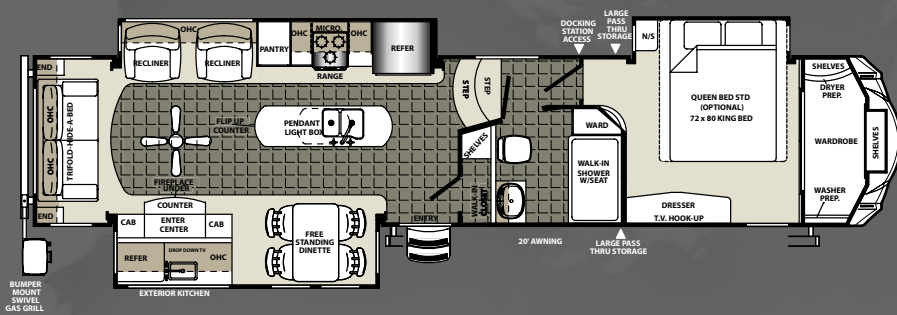
# 330RLS



# 346RETS



# 35ROK

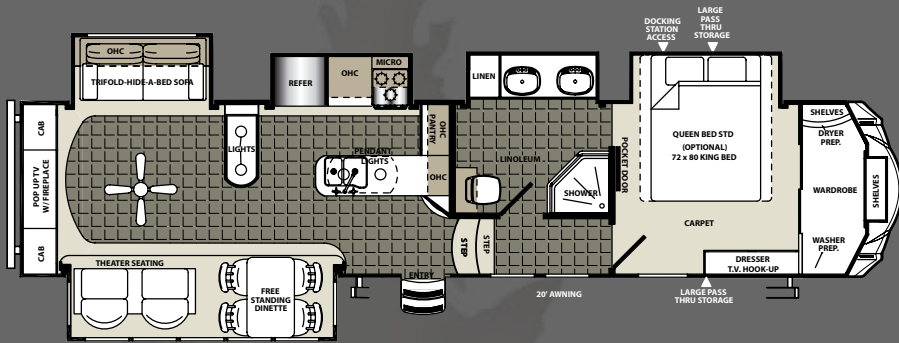


# SPECS

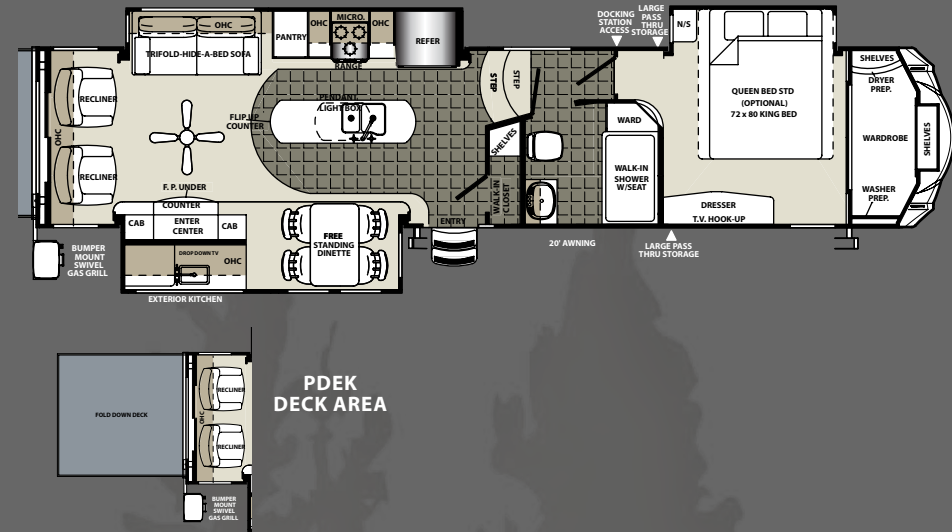
MODEL	330RLS	346RETS	35ROK
Hitch	2,672	2,302	2,423
Ship	11,531	11,415	11,908
GVWR	15,500	15,500	15,500
Cargo	3,969	4,085	3,592
Length	38' 9"	38' 5"	41' 11"
Height	13' 1"	13' 2"	13' 2"
Awning	17'	19'	19'
Gray	89	108	81
Black	54	54	54
Fresh	64	64	64



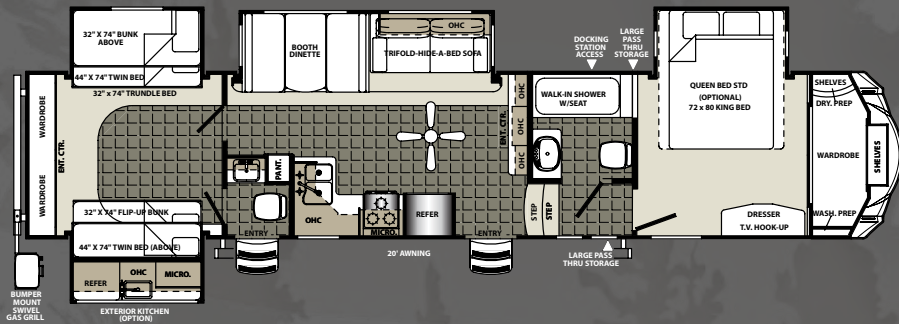
# 355RE



# 360PDEK



# 365SAQB



# SPECS

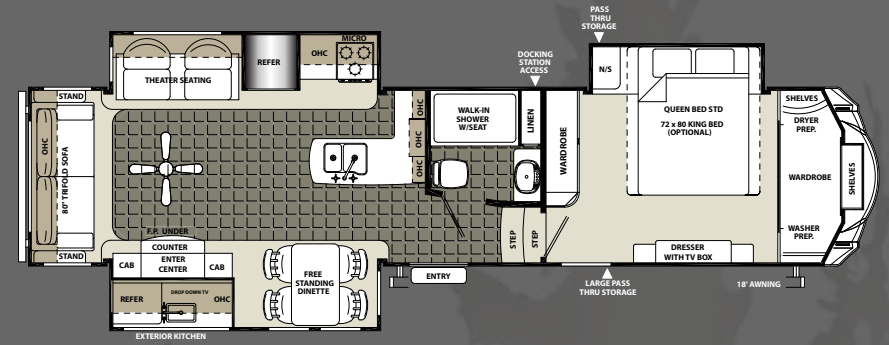
MODEL	355RE	360PDEK	365SAQB
Hitch	2,084	2,292	2,060
Ship	12,080	12,740	12,275
GVMR	15,500	15,500	15,500
Cargo	3,420	2,760	3,225
Length	40' 9"	41' 11"	41' 7"
Height	13' 0"	13' 2"	13' 0"
Awning	20'	19'	20'
Gray	108	81	140
Black	54	54	108
Fresh	64	64	64



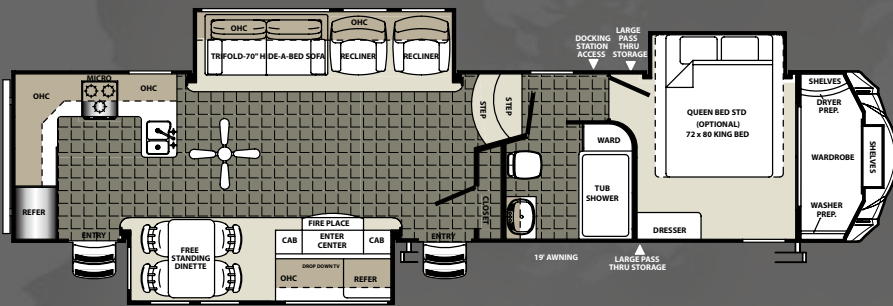
# 371REBH



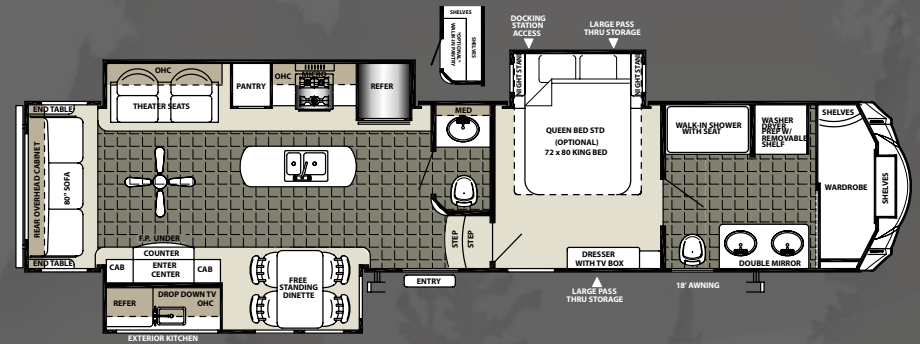
# 373MBOK



# 37RKOK

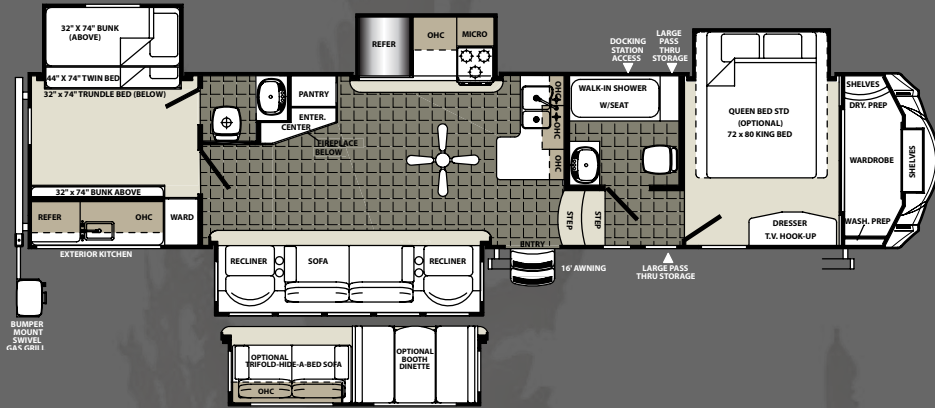


# 378FB

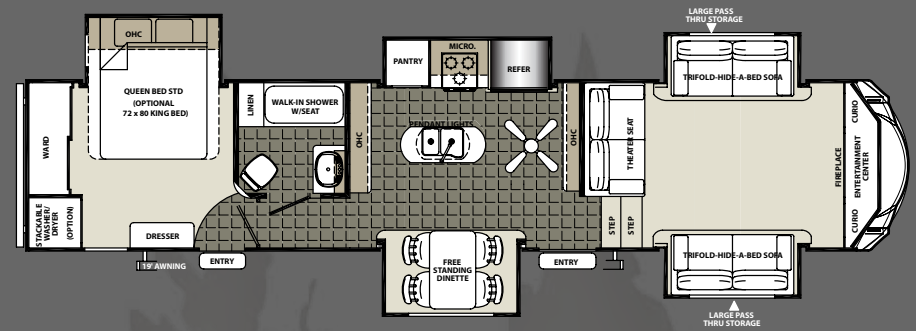




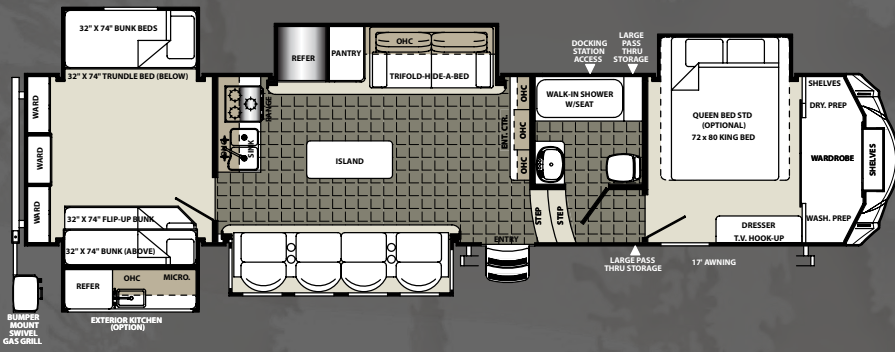
# 376BHOK



# 377FLIK



# 380BH5



# SPECS

MODEL	371REBH	373MBOK	376BHOK	377FLIK	37RKOK	378FB	380BH5
Hitch	1,996	1,920	2,180	2,235	2,355	2,096	1,861
Ship	12,565	11,765	12,610	11,821	11,985	12,396	12,379
GVWR	15,500	15,500	15,500	15,500	15,500	15,500	15,500
Cargo	2,935	2,105	2,890	3,679	3,515	1,650	3,121
Length	42' 11"	39' 2"	43' 0"	41' 8"	42' 9"	42' 7"	42' 5"
Height	13' 2"	13' 2"	13' 2"	13' 2"	13' 2"	13' 2"	13' 2"
Awning	21'	18'	16'	19'	19'	18'	16'
Gray	108	99	135	96	89	99	86
Black	54	54	108	32	54	54	54
Fresh	64	64	64	64	64	64	64



# Sandpiper

## LUXURY FIFTH WHEELS



### PRE-DELIVERY INSPECTION FACILITY

20,000 square feet of quality assurance. The bare essentials for a premium product. This state-of-the-art facility gives immediate daily feedback to production for quality assurance in every unit built.



Forest River, Inc. encourages our customers to purchase their Forest River products from a local dealership whenever possible for the following reasons:

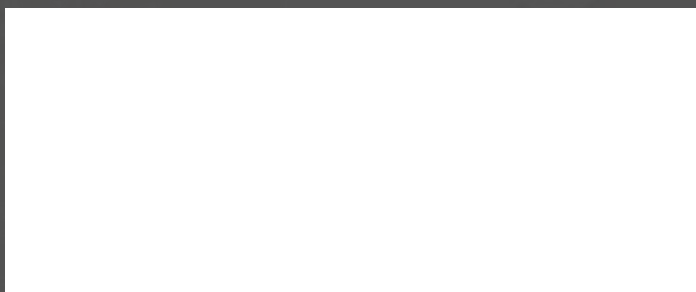
- 1) Forest River, Inc. dealers are independently owned and operated businesses so priority service and scheduling is at their discretion and is often provided to customers that purchased their unit at that dealership.
- 2) Purchasing locally allows customers to establish meaningful relationships with a dealer, enhancing the RV experience through assistance with product questions, user tips or RV regulations for your state or country, and much more!
- 3) Canadian customers must meet requirements to bring an RV purchased out of the country to their home. These requirements may involve additional inspections and certifications, taxes and fees. Your local Canadian Dealer is a professional at meeting these requirements.
- 4) Scheduling timely warranty repairs and adjustments through a local dealership provides far greater flexibility and convenience to you, the customer!

It is the goal of Forest River, Inc. that all of our RV owners fully enjoy the RV experience and that customer satisfaction meets or exceeds their expectations!

### 24/7 EMERGENCY ROADSIDE ASSISTANCE

For a worry-free ownership experience Forest River includes one year of Coach-Net RV Technical & Roadside Assistance with each RV purchase. Whether new to the RV lifestyle or an experienced RV enthusiast, Forest River owners have 24/7 access to technical, operational and emergency road service coverage throughout the US & Canada. Coach-Net's fast, dependable service is just a phone call away.

**Coach-Net®**  
RV Technical & Roadside Assistance



**Learn More**  
Scan this barcode using a QR Reader on your smart phone to learn more about Forest River.



A Berkshire Hathaway company.

Forest River, Inc.  
2012 Century Dr.  
Goshen, IN 46528  
(574) 389-4600  
[www.forestriverinc.com/Sandpiper](http://www.forestriverinc.com/Sandpiper)  
[www.forestriveraccessories.com](http://www.forestriveraccessories.com)



All specifications herein are based on the latest product information at the time of printing. Forest River reserves the right to make changes in colors, materials, equipment and specifications at any time without notice and assumes no responsibility for any errors in this brochure. The photos in this brochure may show props and/or optional equipment. PLD418

© 2015- Sandpiper- a division of Forest River Inc.  
A Berkshire Hathaway company