

ALLEGRO RED®

2015



**TIFFIN**  
MOTORHOMES



2015 ALLEGRO RED

# Get more than you expect.

FEW COACHES CAN COMPARE TO THE VALUE OF OUR ENTRY-LEVEL DIESEL PUSHER.

Prepare to be impressed with the 2015 Tiffin Allegro RED. Not only does it deliver a fuel-efficient, power-packed rear diesel engine at an entry-level price, the RED offers amazing value. Packed inside this coach are an incredible number of standard features considered upgrades by other RV manufacturers. Luxuries such as automatic HWH hydraulic leveling jacks, Diamond Shield protection, handcrafted hardwood cabinetry, an integrated whole-house water filtration system and the list goes on. Step inside and see for yourself.



**FOR ADDITIONAL CONTENT**, download the free LAYAR app on your tablet or smartphone, and scan photos showing the LAYAR logo.





SHOWN 33 AA FLOOR PLAN WITH GOLD CORAL EXTERIOR







## RIDE

# Everyday roads will no longer seem ordinary.

The easy handling of the Allegro RED will rekindle your love of the road with every passing mile, powered by a hefty Cummins ISB 6.7-liter turbocharged 340 HP diesel engine. Air cushioned suspension keeps the ride smooth and steady, even as road conditions change. The Freightliner® chassis' rear engine design delivers multiple benefits, from a quieter ride and roomier driver's cabin to larger basement storage.

### ABOVE AND BEYOND

Tiffin excels in thoughtful details: A 100-gallon fuel tank can be filled from either side of the coach. Entry stairs provide an assistance bar for safety, along with an automatic cover that slides across the stairwell to add more floor space to the cab. And automatic HWH leveling jacks make stabilizing the coach as simple as pushing a button.

### IN THE ZONE

The cockpit puts you firmly in control. Tilt steering wheel and captain's chair adjust to your preferred vantage point. Optional in-dash GPS keeps you on track, while the computer co-pilot provides trip details, like odometer mileage and engine hours.

### ALL AROUND YOU

Keep a more watchful eye on traffic with Tiffin's exclusive vision monitor system. Integrated cameras on the rear and sides of the coach transmit audio-visual data to an in-dash display, alerting you to potential hazards when parking or changing lanes. Traffic cameras can also serve as a security system, monitoring activity around your coach when parked.

SHOWN 33 AA FLOOR PLAN WITH ENGLISH CHESTNUT CABINETS AND LINEN INTERIOR



ROTATING CAPTAIN'S CHAIRS



IN-DASH GPS



HIGH-DEFINITION REAR/SIDE MONITOR

FLOOR PLANS

With so many thoughtful features, our floor plans are now called MORE plans.

The design of every Tiffin floor plan must meet four essential criteria:

- Maximum space.
- Optimal organization.
- Relaxation plus.
- Elegant atmosphere.

Together, they add up to offer your family the most comfortable and convenient layout for life on the road.

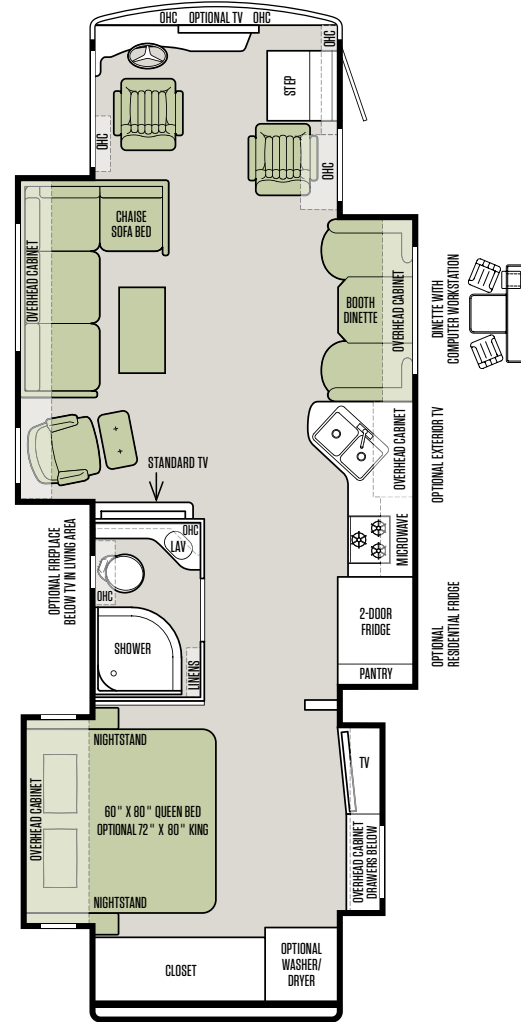
**TIFFIN INNOVATION: EXTRAORDINAIRE™ AC SYSTEM**

The interior ambiance in your Tiffin coach is enhanced by a state-of-the-art heating and cooling method, developed by Tiffin engineers for exclusive use in our luxury coaches. Modeled on residential-style systems, it uses adjustable registers and return vents placed the length of the ceiling to keep the airflow moving in a circular pattern to maintain your desired interior temperature. Whisper quiet and incredibly efficient, it easily lives up to its name — Extraordinaire.

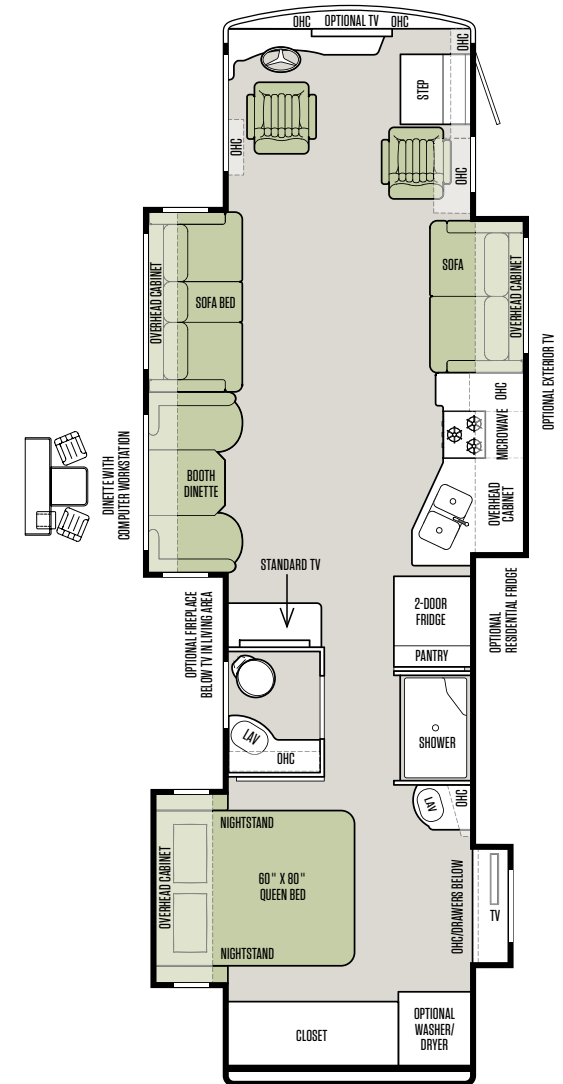


TAKE A CLOSER LOOK AT OUR INNOVATIVE AC SYSTEM

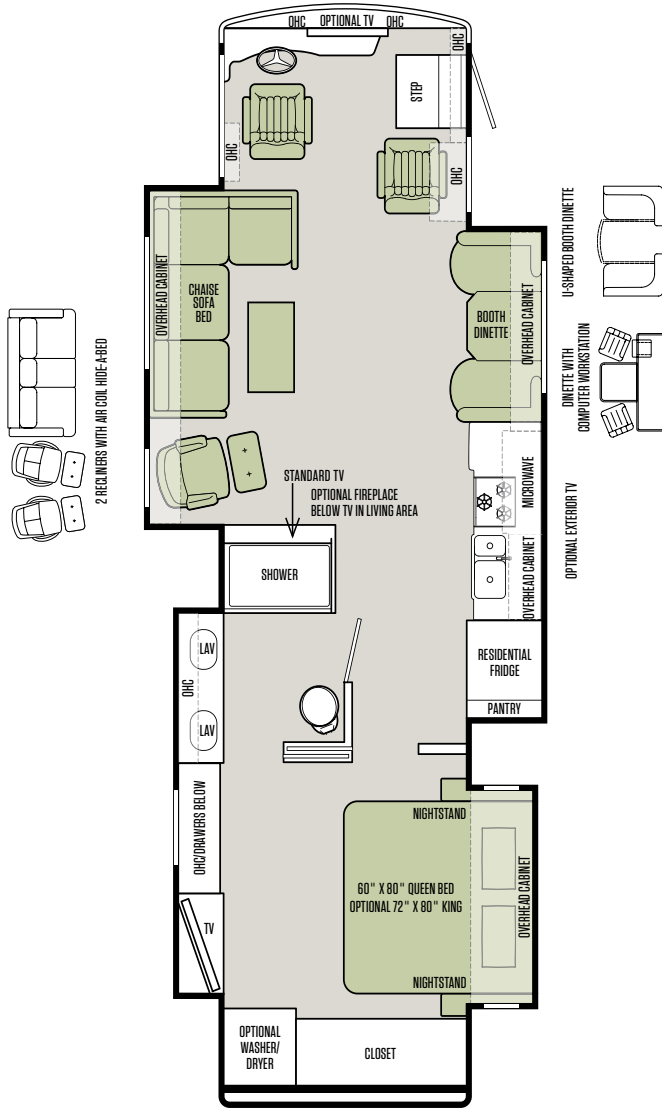
33 AA



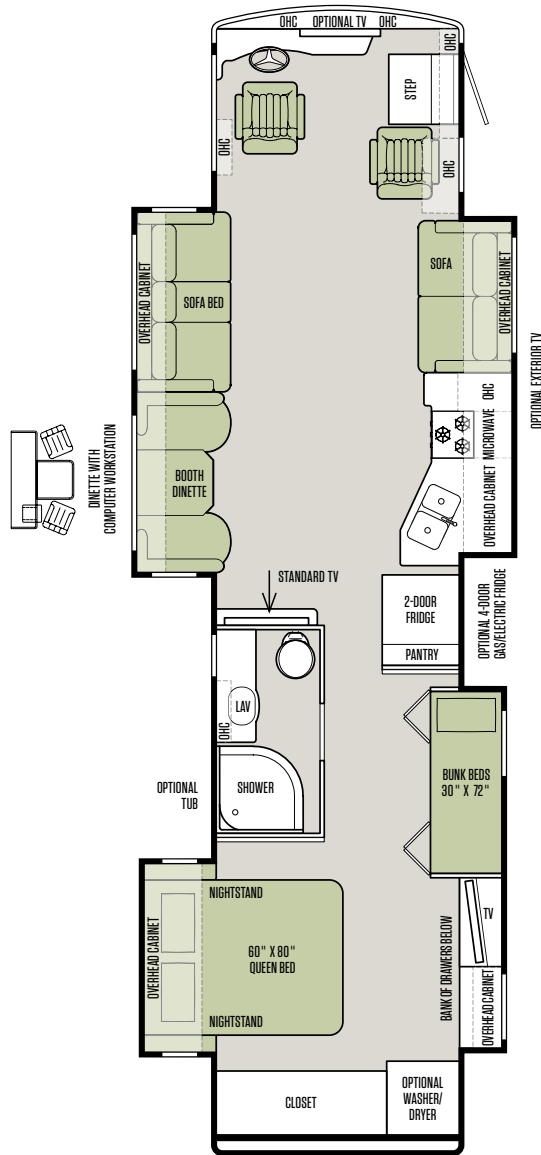
36 QSA



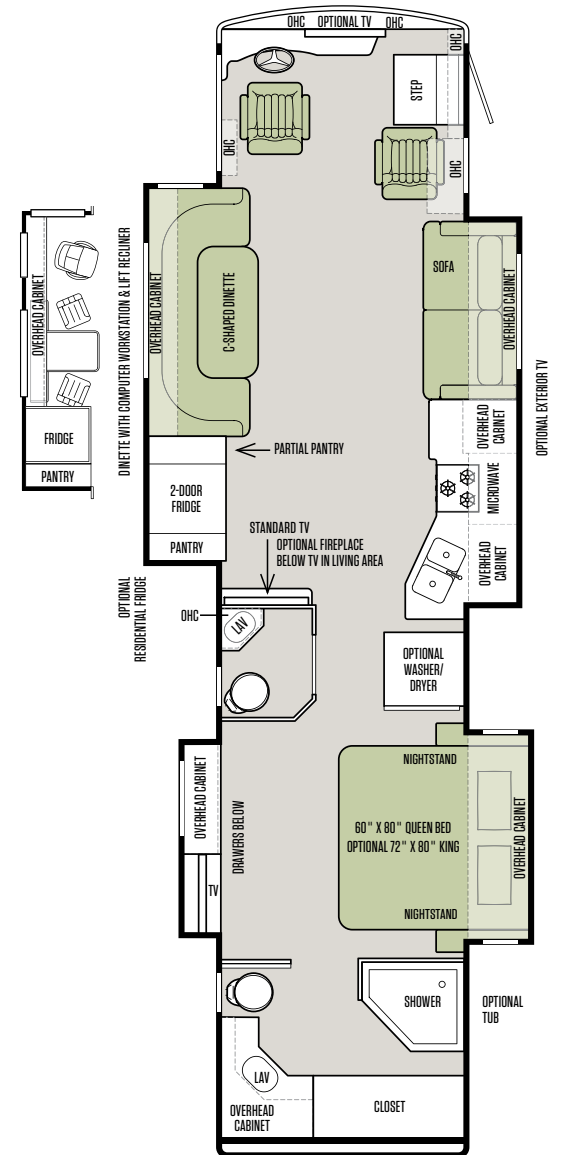
37 PA



38 QBA



38 QRA







EURO RECLINER



LIVING AREA TV



COMPUTER WORKSTATION

## LIVE

# Room for one big happy family.

Traveling in the Allegro RED gives you the best of both worlds — the excitement of seeing new places while enjoying the comforts of familiar spaces. With 7' ceilings, four slide-outs, and floor plans up to 38', there's plenty of room for everyone to stretch out without cramping anyone's style. A host of luxury features makes traveling life even more relaxed, such as a residential-style air conditioning system, home theater system with surround sound, and custom-made privacy shades on every window.

## RELAX

A multitude of seating arrangements lets you personalize the main cabin for your family's preferred lifestyle. For a party of two, consider the cozy recliner next to the optional fireplace. If hosting a group, the L-shaped chaise can serve as party headquarters.

## ENTERTAIN

The RED spoils you with entertainment luxuries, from the home theater system with surround sound to HDTV in the living area, an additional HDTV in the bedroom, and optional HDTV above the driver's cab. There's also an optional exterior HDTV.

## ENJOY

Tucked away in the exterior front cap is the RED's 8.0 kw generator. This unobtrusive location ensures sound waves move away from the coach for quieter usage. To supplement generator power, a 2000-watt inverter comes standard, a handy feature at campgrounds without electrical hookups.

SHOWN 33 AA FLOOR PLAN WITH ENGLISH CHESTNUT CABINETS AND LINEN INTERIOR







TAKE A CLOSER LOOK AT THE ALLEGRO RED COMPLETE 360 INTERIORS









## DINE

# When luxury comes standard, the rest is icing on the cake.

With top-rated name brand appliances and clever storage solutions, the kitchen aboard the Allegro RED is a recipe for culinary success. Standard features earn four-star rankings, from three-burner recessed gas cooktop and oven to a double bowl stainless steel sink. Custom covers convert cooktop and sink, when not in use, into extra counter space. An optional residential refrigerator offers ample space for stocking up on family favorites.

### EASY TO MAINTAIN

Housekeeping is never a chore when vacationing in your Allegro RED. Solid surface countertops and tile floors require minimal upkeep, as do stain-resistant carpets in the slide-outs. An optional central vacuum system makes tidying up even faster. Opt for an onboard washer and dryer to simplify laundry duty.

### EASY TO ORGANIZE

Handsome built-in cabinetry throughout the coach offers a place for everything. Extra-deep cabinets hold more than you'd imagine and can be customized with adjustable shelves to make the most of every inch. Woodwork in every Tiffin coach, from cabinets and drawers to decorative finishes, is cut, sanded, and stained by craftsmen in our Red Bay mill.



### TIFFIN STORE-IT-ALL™ ASSURANCE

The 2015 Allegro RED offers Store-It-All Assurance, Tiffin's desire to exceed competitors in storage capacity, a needed commodity in any motorhome. Deeper than industry standards, our cabinets feature adjustable shelving and sliding compartments for better organization. Drawers are outfitted with full extension metal slides to pull completely open. All kitchen cabinetry is handcrafted from solid unblemished hardwood and features Tiffin's trademark fit-and-finish detailing.

SHOWN 33 AA FLOOR PLAN WITH ENGLISH CHESTNUT CABINETS AND COUNTERTOP BACKSPLASH UPGRADE



DOUBLE BOWL STAINLESS STEEL SINK



THREE-BURNER COOKTOP



DINETTE WITH COMPUTER WORKSTATION





OVERHEAD TV IN BEDROOM



SOFA CONVERTS TO BED



MOLDED FIBERGLASS SHOWER



STACKED WASHER/DRYER

## REST

# Bedtime may become your favorite time of the day.

Since one-third of your time in a motorhome will be spent asleep, it's essential to choose a coach that furnishes the necessities for quality sleep: A comfy bed, the perfect temperature, and a generous supply of peace and quiet. The Allegro RED excels on all counts, pampering you with luxury hotel-grade innerspring mattresses, residential-style whole house air conditioning, and sound-muffling insulated walls and windows. You may never count sheep again.

## SLEEPING

Transporting eight people is one thing; making sure everyone sleeps well is quite another. Once again, the Allegro RED succeeds, offering a variety of sleeping options. In the main cabin, plush sofas are designed for double duty, converting into full-size beds at lights out. Bunk beds are a kid-friendly favorite, especially when paired with DVD monitors.

## BATHING

Bathing quarters are first class, delivering complete privacy, plenty of storage, and top-of-the-line finishes. A luxurious fiberglass shower comes standard. The stall is made as one solid piece without seams that could leak or crack. The RED also features a bathtub option for families with children or anyone who enjoys a hot soak.

SHOWN 33 AA FLOOR PLAN WITH ENGLISH CHESTNUT CABINETS AND LINEN INTERIOR









**INTERIOR DÉCOR**

Ready to personalize your coach? Our sophisticated color palettes — available in Camomile, Caramel, and Linen — lend a professional decorator's touch to family living spaces, as well as beautifully complement your personal style. As in all Tiffin coaches, solid surface countertops feature a smooth finish and earthy colors. New this year is the option of a mosaic tile pattern for backsplashes. Hardwood cabinetry, built by hand in our Red Bay mill, comes in classic finishes: Medium Alderwood, English Chestnut, or Cordovan. For larger images of interior design options, visit [tiffinmotorhomes.com](http://tiffinmotorhomes.com).

**CABINETS**



MEDIUM ALDERWOOD



ENGLISH CHESTNUT



CORDOVAN

**FLOORING**



CARPET



TILE

**CAMOMILE FABRIC SUITE**

**LIVING AREA & KITCHEN**



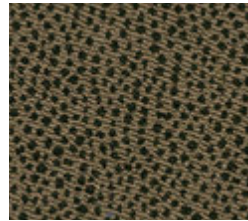
PILLOWS



VALANCE

**CARAMEL FABRIC SUITE**

**LIVING AREA & KITCHEN**



PILLOWS



VALANCE

**LINEN FABRIC SUITE**

**LIVING AREA & KITCHEN**



PILLOWS



VALANCE

**SOFA & COCKPIT SEATS**



STANDARD LEATHER

**SOFA & COCKPIT SEATS**



STANDARD LEATHER

**SOFA & COCKPIT SEATS**



STANDARD LEATHER

**BEDROOM**



**BEDROOM**



**BEDROOM**



Allegro RED cabinet doors & fascias are made of solid wood, & all cabinet finishes are available in combination with any fabric suite. All options may not be available in every model. Because of progressive improvements, specifications, standard & optional equipment are subject to change without notice or obligation. For a complete & up-to-date list of available options & specifications, visit [tiffinmotorhomes.com](http://tiffinmotorhomes.com).



## SPECIFICATIONS

### LIVING AREA/DINETTE

AVAILABLE OPTIONS:	33 AA	36 QSA	37 PA	38 QBA	38 QRA
Halo Leatherette Booth Dinette on Passenger Side	S	NA	S	NA	NA
Halo Leatherette Booth Dinette on Driver Side	NA	S	NA	S	NA
Halo Leatherette DE Sofa/Sleeper on Driver Side	NA	S	NA	S	NA
Halo Leatherette Hide-A-Bed Sofa/Sleeper on Driver Side	NA	O	NA	O	NA
Halo Leatherette L-shaped Sofa on Driver Side	NA	S	NA	S	NA
Halo Leatherette L-Shaped Sofa and Recliner on Driver Side	NA	NA	S	NA	NA
Halo Leatherette Air Coil Hide-A-Bed & 2 Recliners	NA	NA	O	NA	NA
Halo Leatherette L-shaped Sofa on Passenger Side	NA	S	NA	S	NA
Halo Leatherette Hide-A-Bed Sofa/Sleeper on Passenger Side	NA	NA	NA	NA	S
Halo Leatherette U-Shaped Dinette on Driver Side	NA	NA	NA	NA	S
Halo Leatherette U-Shaped Dinette on Passenger Side	NA	NA	O	NA	NA
Dinette with Computer Workstation	O	O	O	O	NA
Dinette with Computer Workstation & One Euro Recliner	NA	NA	NA	NA	O
Fireplace Below TV in Entertainment Center	O	O	O	NA	O

### KITCHEN

#### STANDARD ON ALL MODELS:

- Double Bowl Kitchen Sink with Single Lever Satin Nickel Faucet
- Solid Surface Galley Countertops
- Solid Surface Backsplashes
- Solid Surface Cooktop Cover
- Gas/Electric 2-door Refrigerator with Pantry
- Stacked Drawers
- 3-burner Recessed Cooktop with Gas Oven
- Microwave with Exterior Venting

AVAILABLE OPTIONS:	33 AA	36 QSA	37 PA	38 QBA	38 QRA
Convection Microwave	O	O	O	O	O
3-burner Cooktop with Convection Microwave	O	O	O	O	O
2-door Gas/Electric Refrigerator with Icemaker	O	O	NA	O	O
4-door Gas/Electric Refrigerator with Icemaker	O	O	NA	O	O
Solid Wood Refrigerator Panels (2-door Refrigerator)	O	O	NA	O	O
Residential Refrigerator	O	O	S	NA	O
Full Tile Backsplash	O	O	O	O	O

### BATH

#### STANDARD ON ALL MODELS:

- Medicine Cabinet
- Satin Nickel Vanity Faucet
- Solid Surface Vanity Top
- Skylight in Shower with Sliding Cover
- Molded Fiberglass One-piece Shower
- Roof Vent Fan

AVAILABLE OPTIONS:	33 AA	36 QSA	37 PA	38 QBA	38 QRA
Tub (in Place of Shower)	NA	NA	NA	O	O

### BEDROOM

#### STANDARD ON ALL MODELS:

- Wardrobe with Automatic Light
- Bed Comforter with Throw Pillows
- TV
- Carpeted Flooring
- Innerspring Queen Mattress (60" x 80")
- Solar & Privacy Shades

AVAILABLE OPTIONS:	33 AA	36 QSA	37 PA	38 QBA	38 QRA
King Bed Mattress (72" x 80")	O	NA	O	NA	O
Bunk Beds (30" x 72") with Bunk Ladder/Convertible Wardrobe	NA	NA	NA	S	NA
DVD Monitors in Bunk Beds	NA	NA	NA	O	NA
Bedroom Ceiling Fan	O	O	O	O	O





WARRANTY

You won't find a better warranty because you won't find a better-built coach.

The Tiffin Five-Star Warranty.  
The best in the business, bar none.



At Tiffin Motorhomes, we build for quality first and foremost, limiting our production to just 12 coaches a day to ensure meticulous craftsmanship. It may not be the most business-savvy way to run a company but it is the best way. By investing the time and effort to do things right, we want you, as a Tiffin owner, to have the utmost confidence in your coach, as well as a peace of mind you won't find with other manufacturers. You see, not only do we stand proudly behind our product, we stand behind you as well.

★ 10

YEAR  
CONSTRUCTION  
WARRANTY

The structural integrity of the welded frame of entire coach is warranted for 10 years.

★ 5

YEAR  
DELAMINATION  
WARRANTY

We guarantee against all exterior fiberglass delamination or wall separation for 5 years.

★ 1

YEAR  
COMPREHENSIVE  
WARRANTY

Your coach is warranted against defects in materials and workmanship for 12 months, or 12,000 miles of use.

★ 1

YEAR  
COACH ROADSIDE  
SERVICES

Available through Coach-Net, the country's largest RV emergency road service, this program provides 24/7 access to responsive roadside and technical assistance.

★ Ongoing  
Owner  
Support

No other motorhome company can compare with Tiffin's exceptional customer service. Email us at [service@tiffinmotorhomes.com](mailto:service@tiffinmotorhomes.com) or call us at 256/356.0261.



## EXTERIOR DÉCOR

### FULL-BODY PAINT SCHEMES



GOLD CORAL



ROCKY MOUNTAIN BROWN



MAROON CORAL



SILVER SAND



OCEANSIDE



SUNLIT SAND

### PREMIUM PAINT SYSTEM

Our six-step full-body paint system features premium grade BASF paints sealed with three layers of superclear coat with ultraviolet protection. An additional layer of scratch-resistant plastic coating protects the front of the coach, stairwell, and entry door lock.

TAKE A CLOSER LOOK AT OUR PAINT SYSTEM IN ACTION





## SPECIFICATIONS

### AUTOMOTIVE

#### STANDARD ON ALL MODELS:

- Raised Rail Chassis Frame
- Air Ride Suspension
- Full Air Brakes
- Exhaust Brake

### CHASSIS

FREIGHTLINER® REAR ENGINE DIESEL CHASSIS:	33 AA	36 QSA	37 PA	38 QBA	38 QRA
Cummins ISB 6.7-liter Electronic Diesel, Turbocharged, Aftercooled Engine	S	S	S	S	S
Peak HP – 340 HP @ 2,600 RPM	S	S	S	S	S
Peak Torque (lb – Ft. Max Net) 660 @ 1,600 RPM	S	S	S	S	S
Allison 2500 MH 6-speed Automatic Transmission with Lock-up	S	S	S	S	S
GAWR – Front	11,000 lb	11,000 lb	11,000 lb	11,000 lb	11,000 lb
GAWR – Rear	18,500 lb	18,500 lb	18,500 lb	18,500 lb	18,500 lb
GVMR	29,500 lb	29,500 lb	29,500 lb	29,500 lb	29,500 lb
GCWR	33,000 lb	33,000 lb	33,000 lb	33,000 lb	33,000 lb
Wheel Base	198"	228"	252"	252"	252"
Tire Size	275/80R22.5	275/80R22.5	275/80R22.5	275/80R22.5	275/80R22.5
Fuel Tank (Gallons) – Dual Fuel Fill	100	100	100	100	100
DEF Tank* (Gallons)	13	13	13	13	13
Alternator Amps	160	160	160	160	160
Trailer Hitch Capacity	5,000 lb	5,000 lb	5,000 lb	5,000 lb	5,000 lb

\*Diesel Exhaust Fluid (DEF) is the active component used in Selective Catalytic Reduction (SCR) engines to reduce nitrogen oxide emissions by 90% to meet EPA standards.

### WEIGHTS & MEASURES

OVERALL:	33 AA	36 QSA	37 PA	38 QBA	38 QRA
Overall Length (Approximate)	34' 3"	36' 9"	38' 2"	38' 9"	38' 9"
Overall Height with Roof Air (Maximum)	12' 10"	12' 10"	12' 10"	12' 10"	12' 10"
Interior Height	84"	84"	84"	84"	84"
Overall Width	101"	101"	101"	101"	101"
Interior Width	96"	96"	96"	96"	96"
Fresh Water (Gallons)	90	90	90	90	90
Black Water (Gallons)	50	50	50	50	50
Grey Water (Gallons)	70	70	70	70	70
LPG Tank (Gallons; can only be filled to 80% capacity)	24	24	24	24	24
Basement Storage (Cubic Feet – Approximate)	83.75	150	119	160	160
Minimum Garage Height	13'	13'	13'	13'	13'





## SPECIFICATIONS

### GENERAL EXTERIOR

#### STANDARD ON ALL MODELS:

- Fiberglass Front & Rear Caps
- Tinted One-piece Windshield
- 8.0 kw Onan® Generator
- Horizontal Mounted Wipers
- Heated Power Mirrors
- Exterior Patio Light – LED
- Power Patio Awning
- Automatic Entry Door Awning
- Slide-out Awning(s)
- Aluminum Wheels
- Quiet AC Roof-ducted System
- Two Low Profile Roof ACs (13.5k BTU)
- Double Electric Step
- 1/4" Thick Single Pane Windows
- Single Handle Lockable Storage Door Latches
- Heated Holding Tank Compartment
- Four 6 V Auxiliary Batteries
- Digital TV Antenna
- Cable TV Ready
- 50 Amp Service
- Black Holding Tank Flush System
- Exterior Rinse Hose/Shower
- Gravity Water Fill
- Color Back-up Monitor
- 110 V Exterior Receptacle
- Undercoating
- Roof Ladder
- External Tripod Satellite Hook-up
- Exterior Storage Compartment Lights
- Chrome Mirror Heads with Integrated Turn Signal Cameras
- BASF Full-body Paint
- Hydraulic Automatic Leveling Jacks
- Front Cap Protective Film

AVAILABLE OPTIONS:	33 AA	36 QSA	37 PA	38 QBA	38 QRA
In-motion Satellite Dish*	<input type="checkbox"/>	<input type="checkbox"/>	<input type="checkbox"/>	<input type="checkbox"/>	<input type="checkbox"/>
Air Horns	<input type="checkbox"/>	<input type="checkbox"/>	<input type="checkbox"/>	<input type="checkbox"/>	<input type="checkbox"/>
Two Low Profile Roof ACs (15.0k BTU) with Heat Pumps (Requires 8.0 kw Generator/Replaces Both Standard ACs)	<input type="checkbox"/>	<input type="checkbox"/>	<input type="checkbox"/>	<input type="checkbox"/>	<input type="checkbox"/>
Exterior TV	<input type="checkbox"/>	<input type="checkbox"/>	<input type="checkbox"/>	<input type="checkbox"/>	<input type="checkbox"/>
Mud Flap with Diffuser	<input type="checkbox"/>	<input type="checkbox"/>	<input type="checkbox"/>	<input type="checkbox"/>	<input type="checkbox"/>

\*High-definition programming is not available on a domed satellite antenna unless you subscribe to DISH Network®.

### GENERAL INTERIOR

#### STANDARD ON ALL MODELS:

- High Gloss Raised Panel Hardwood Cabinet Doors
- Solid Wood Cabinet Fascias
- Soft Touch Vinyl Ceiling
- TV
- Vinyl Tile Flooring (Excluding Slide-outs)
- Treated Carpet & Fabrics
- Ball Bearing Drawer Slides
- Chainless Solar & Privacy Shades
- Power Roof Vents
- Tank Level Monitor System
- Smoke Detector
- 10-gallon DSI Gas/Electric Water Heater
- Power Step Well Cover
- 2000 Watt Sine Wave Inverter
- Carbon Monoxide Detector
- LED Lighting
- Extraordinaire™ AC System
- LPG Leak Detector
- Home Theater Surround Sound System (Includes DVD Player)

AVAILABLE OPTIONS:	33 AA	36 QSA	37 PA	38 QBA	38 QRA
Medium Alderwood Solid Cabinet Doors & Drawer Fronts	<input type="checkbox"/>	<input type="checkbox"/>	<input type="checkbox"/>	<input type="checkbox"/>	<input type="checkbox"/>
English Chestnut Solid Cabinet Doors & Drawer Fronts	<input type="checkbox"/>	<input type="checkbox"/>	<input type="checkbox"/>	<input type="checkbox"/>	<input type="checkbox"/>
Cordovan Solid Cabinet Doors & Drawer Fronts	<input type="checkbox"/>	<input type="checkbox"/>	<input type="checkbox"/>	<input type="checkbox"/>	<input type="checkbox"/>
Stacked Washer/Dryer	<input type="checkbox"/>	<input type="checkbox"/>	<input type="checkbox"/>	<input type="checkbox"/>	<input type="checkbox"/>
Central Vacuum Cleaner	<input type="checkbox"/>	<input type="checkbox"/>	<input type="checkbox"/>	<input type="checkbox"/>	<input type="checkbox"/>

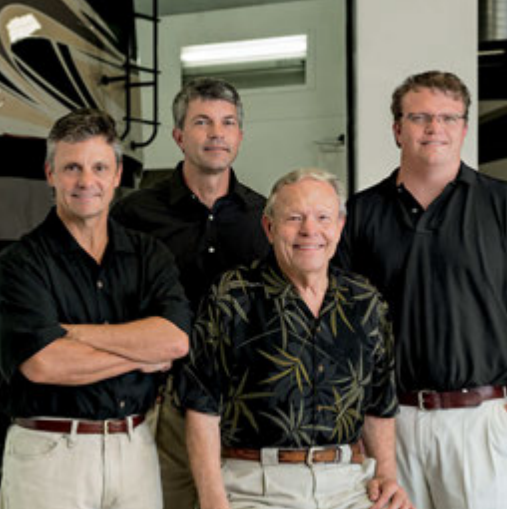
### COCKPIT

#### STANDARD ON ALL MODELS:

- Tilt Steering Wheel
- Dual Dash Fans
- Wood Drawers in Dash
- Lighted Instrument Panel
- CD Player & AM/FM Stereo
- 12 V Dash Receptacle
- Power Solar & Privacy Windshield Shades
- Satellite-ready Radio (Subscription Required)
- 12 V Disconnect Switch
- USB Dash Receptacle
- Fire Extinguisher
- Manual Solar & Privacy Shades on Side Windows
- Adjustable Seatbelt Brackets
- Power Halo Leatherette Driver & Passenger Seats
- Power Passenger Seat Footrest

AVAILABLE OPTIONS:	33 AA	36 QSA	37 PA	38 QBA	38 QRA
In-dash Navigation System	<input type="checkbox"/>	<input type="checkbox"/>	<input type="checkbox"/>	<input type="checkbox"/>	<input type="checkbox"/>
Overhead TV	<input type="checkbox"/>	<input type="checkbox"/>	<input type="checkbox"/>	<input type="checkbox"/>	<input type="checkbox"/>





# A family business built around yours.

Tiffin Motorhomes is proud to be one of the few family-owned manufacturers in the industry, and it makes a significant difference in how our company operates versus our competitors. For starters, with the Tiffin name on every coach, building a superior motorhome isn't just our occupation. It's a matter of personal pride, a pursuit we have committed our lives to perfecting.

Since we don't have shareholders looking over our shoulder, the only people we focus on making happy are folks like you. All the decisions we make, from using better parts to offering more thoughtful floor plans than anyone else, are based on what will result in a better motorhome, not a better dividend check. In fact, some decisions, like limiting production to 12 coaches a day to ensure quality craftsmanship, probably wouldn't sit too well with a corporate board of directors.

Also, when we say family-owned, that means family-operated, too. Tim Tiffin has been our General Manager for more than a decade, guiding the overall direction of our company. Van Tiffin oversees innovations as head of Research & Development, and Lex Tiffin's work with Supplier Relations helps us maintain our high standards. Of course, everyone knows our founder Bob, who is in the RV Industry Association's Hall of Fame and is still the first one at the plant every morning at 5:00 a.m.

As a family running a motorhome company, we understand families who own motorhomes. We know it's not just about where a coach will take you, but the experience you take from the journey. That's why every Tiffin motorhome is made to move you.

**LEFT TO RIGHT:** TIM TIFFIN, VAN TIFFIN,  
BOB TIFFIN, AND LEX TIFFIN

**GO TO [TIFFINMOTORHOMES.COM](http://TIFFINMOTORHOMES.COM)**

Visit us on the web for more information on the 2015 Allegro RED and all 2015 Tiffin Motorhomes, along with the latest product and specification updates. Plus, watch videos and see other exclusive web content. You can also follow us on Facebook and Twitter.

FOR PARTS & SERVICE CALL [256/356.0261](tel:2563560261)

 [FACEBOOK.COM/TIFFINMOTORHOMES](https://www.facebook.com/tiffinmotorhomes)

 [TWITTER.COM/TIFFINMOTORHOME](https://twitter.com/tiffinmotorhome)

**YOUR LOCAL TIFFIN DEALER:**