

2016

PHAETON®



TIFFIN
MOTORHOMES



SHOWN 40 AH FLOOR PLAN WITH WHITE MAHOGANY EXTERIOR PAINT SCHEME



SHOWN 40 AH FLOOR PLAN WITH MOCHA CABINETS & MOONBEAM INTERIOR



MOONBEAM BACKSPASH & COUNTERTOP

PHAETON

2016

Our bestseller.

Consistently Tiffin's bestselling model, the Phaeton ranks among the top-selling Class A motorhomes in the industry. Few coaches deliver greater value for luxury, practicality, customization, and power. With a wide selection of floor plans to fit your lifestyle and luxury enhancements as standard features, the 2016 Phaeton was built to perform and priced to compete. It's our bestseller for a reason.

MEET THE MOST POPULAR COACH IN ITS CLASS.

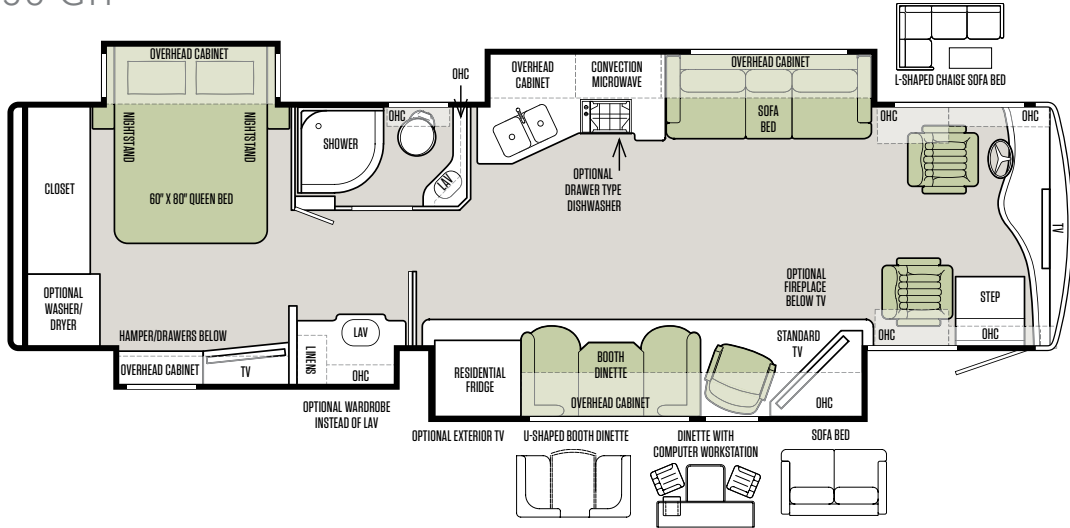


SHOWN 40 AH FLOOR PLAN WITH MOCHA CABINETS & MOONBEAM INTERIOR

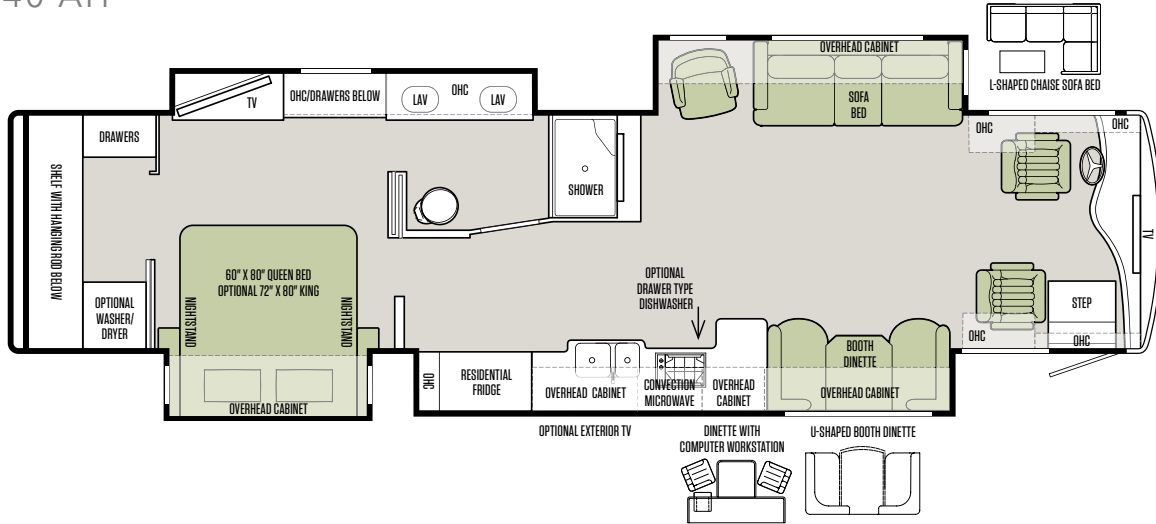
FLOOR PLANS

Tiffin floor plans: Thoughtful in every detail and in every dimension.

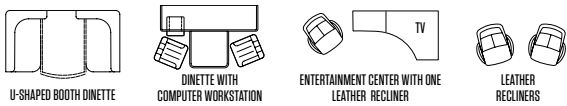
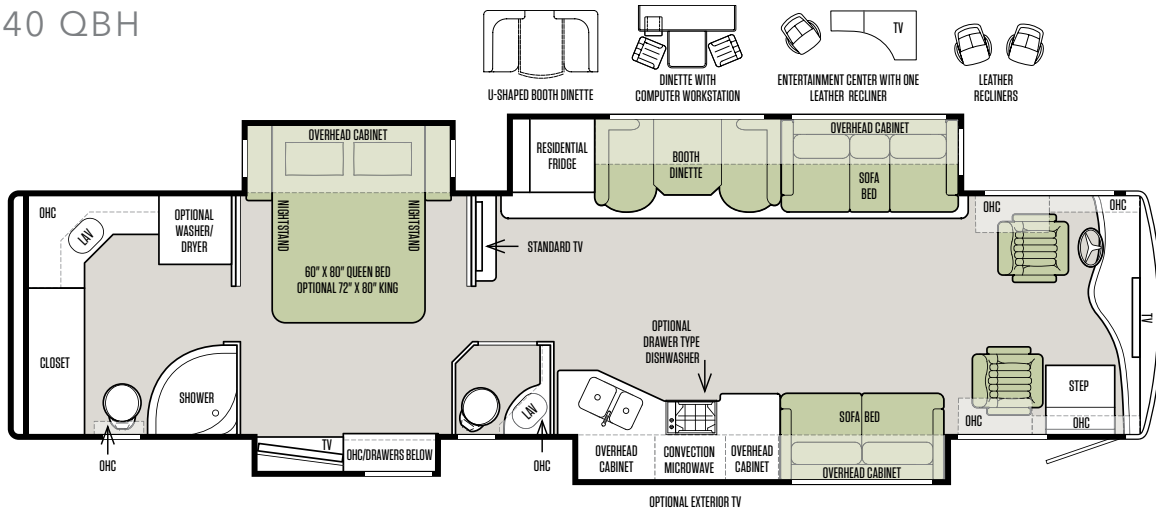
36 GH



40 AH



40 QBH

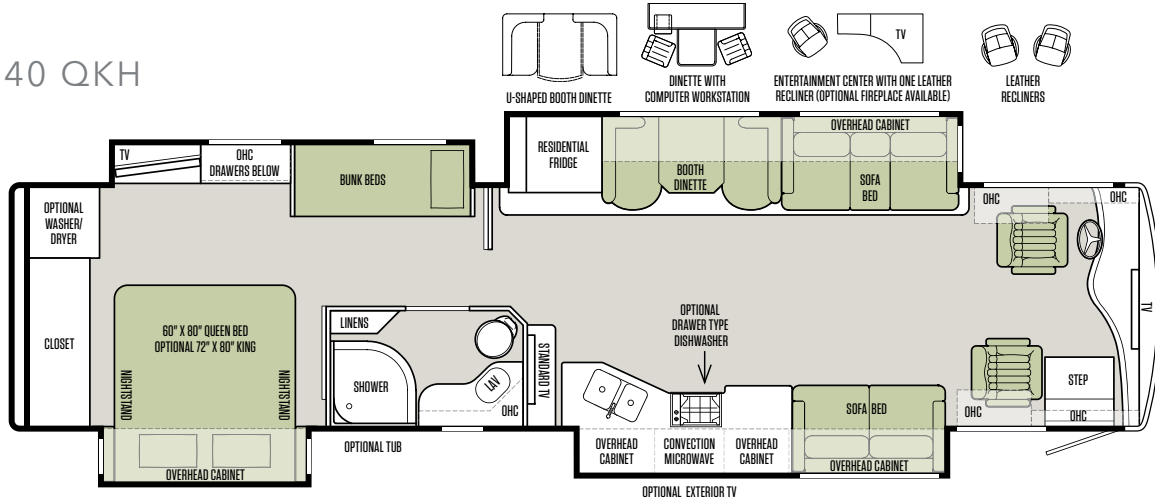


FLOOR PLANS

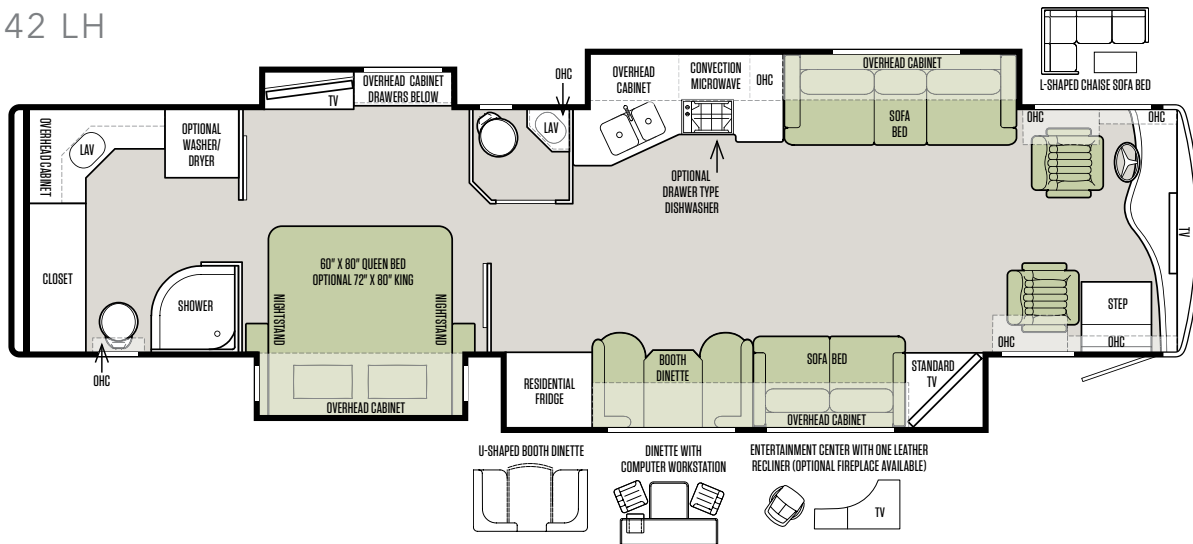


The design of every Tiffin floor plan must meet four essential criteria:
Maximum space. **Optimal organization.** **Relaxation plus.** **Elegant atmosphere.**
MORE plans offer your family the most comfortable layout for life on the road.

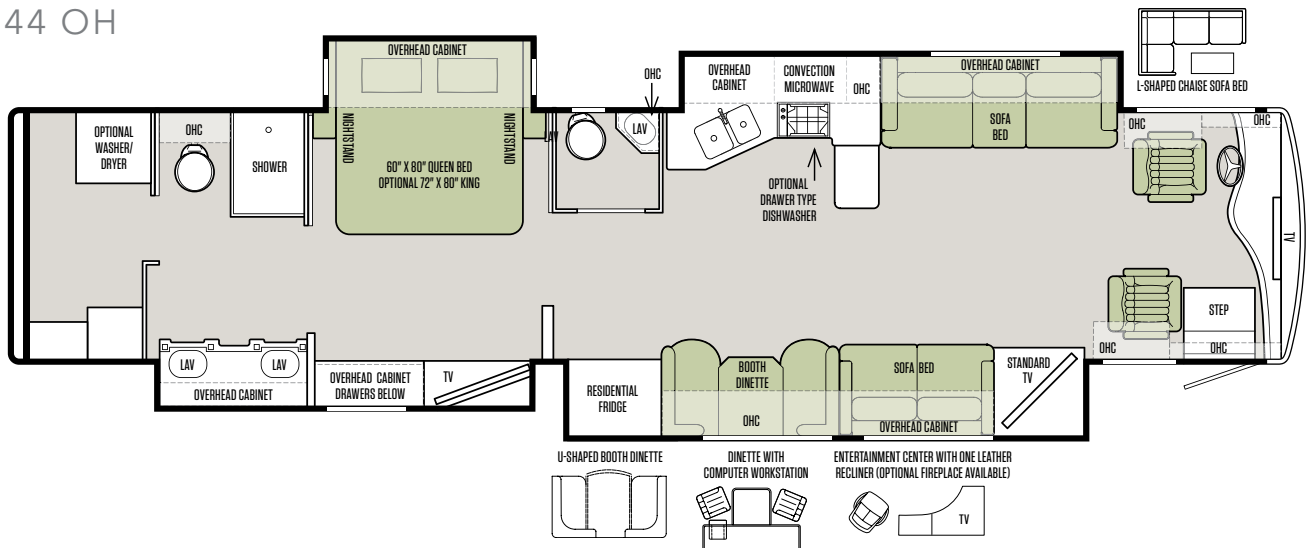
40 QKH



42 LH



44 OH



Note: If optional furniture combinations are selected, window locations may vary from diagram shown.

Now it's time to personalize your coach.

1

Start with our handcrafted hardwood cabinetry available in your choice of luxury finishes: Cordovan, English Chestnut or Mocha.

CABINETS



CORDOVAN



ENGLISH CHESTNUT



MOCHA

STANDARD FLOORING



TILE



CARPET

2

Then, add texture with your choice of designer fabric suites: English Toffee, Moonbeam or Vintage. All fabrics are treated for stain resistance.

ENGLISH TOFFEE

LIVING AREA



PILLOWS



VALANCE

KITCHEN



BACKSPLASH



COUNTERTOP

SOFA & COCKPIT SEATS



STANDARD LEATHER

BEDROOM



INTERIOR DÉCOR

Make your experience on the road all your own. Express yourself by choosing the interior appointments such as cabinet finishes, flooring and fabric textures for every part of your motorhome. In the 2016 Phaeton, you'll be able to go in style no matter where you go.

MOONBEAM

LIVING AREA



PILLOWS



VALANCE

KITCHEN

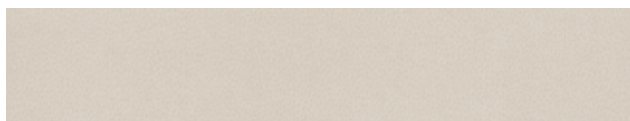


BACKSPLASH



COUNTERTOP

SOFA & COCKPIT SEATS



STANDARD LEATHER

BEDROOM



VINTAGE

LIVING AREA



PILLOWS



VALANCE

KITCHEN

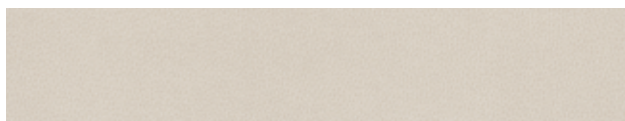


BACKSPLASH



COUNTERTOP

SOFA & COCKPIT SEATS



STANDARD LEATHER

BEDROOM



EXTERIOR DÉCOR

FULL-BODY PAINT SCHEMES

PREMIUM PAINT SYSTEM

Our eight-step full-body paint system features premium grade paints sealed with four layers of superclear coat with ultraviolet protection. An additional layer of scratch-resistant plastic coating protects the front of the coach, stairwell, and entry door lock.



EMERALD SPRUCE



SUNLIT SAND



NASA



WHITE MAHOGANY



RUSTIC CANYON

AUTOMOTIVE

Standard on All Models:

- Raised Rail Chassis Frame
- Air Ride 4 Air Bags Up to 40', 6 Air Bags on 42' & 44'
- Aluminum Wheels
- Exhaust Brake (36' & 40')
- Compression Brake (42' & 44')
- Adjustable Accelerator & Brake Pedals
- Allison 3000 MH 6-speed Automatic Transmission
- Air Brakes with Automatic Slack Adjusters & ABS
- 55" Wheel Cut
- Fog Lights
- Daytime Running Lights
- 18" VIP Steering Wheel
- Cruise Control
- Emergency Start Switch

CHASSIS OPTIONS

	36 GH	40 AH	40 QBH	40 QKH	42 LH	44 OH
Freightliner Cummins ISL 380 HP/1050 lb Torque	S	S	S	S	NA	NA
Freightliner Cummins ISL 450 HP/1250 lb Torque	NA	NA	NA	NA	S	S
PowerGlide® ISL 450 HP/1250 lb Torque with Independent Front Suspension	NA	NA	NA	NA	NA	O
GVWR	35,320 lb	35,320 lb	35,320 lb	35,320 lb	44,320 lb	47,600 lb
GAWR - Front	14,320 lb	14,320 lb	14,320 lb	14,320 lb	14,320 lb	15,600 lb
GAWR - Rear	21,000 lb	21,000 lb	21,000 lb	21,000 lb	20,000 lb	22,000 lb
GAWR - Tag Axle	NA	NA	NA	NA	10,000 lb	10,000 lb
GCWR	45,320 lb	45,320 lb	45,320 lb	45,320 lb	54,320 lb	57,600 lb
Alternator Amps	160	160	160	160	160	210
Trailer Hitch Capacity	10,000 lb	10,000 lb	10,000 lb	10,000 lb	10,000 lb	10,000 lb
Fuel Tank (Gallons) - Dual Fuel Fill	100	100	100	100	100	100
DEF Tank* (Gallons)	13	13	13	13	13	15

*Diesel Exhaust Fluid (DEF) is the active component used in Selective Catalytic Reduction (SCR) engines to reduce nitrogen oxide emissions by 90% to meet EPA standards.

WEIGHTS & MEASURES

Overall:

	36 GH	40 AH	40 QBH	40 QKH	42 LH	44 OH
Overall Length (Approximate*)	38' 2"	41' 4"	41' 4"	41' 4"	43' 10"	45'
Overall Height with Roof Air (Maximum)	12' 7"	12' 7"	12' 7"	12' 7"	12' 7"	13' 2"
Interior Height	84"	84"	84"	84"	84"	83"
Overall Width	101"	101"	101"	101"	101"	101"
Interior Width	96"	96"	96"	96"	96"	96"
Fresh Water (Gallons)	90	90	90	90	90	100
Black Water (Gallons)	50	50	50	50	50	55
Grey Water (Gallons)	66	66	66	66	66	100
LPG Tank (Gallons; can only be filled to 80% capacity)	35.7	35.7	35.7	35.7	35.7	28.6
Basement Storage (Cubic Feet - Approximate)	111	157	157	157	152	253
Wheel Base	228"	266"	266"	266"	272"	310"
Tire Size	275/80R22.5	275/80R22.5	275/80R22.5	275/80R22.5	275/80R22.5	295/80R22.5
Minimum Garage Height	13'	13'	13'	13'	13'	14'

*The approximated coach lengths do not include side-view mirrors and rear ladders.

GENERAL EXTERIOR

Standard on All Models:

- Hydraulic Automatic Leveling Jacks
- Large Tinted One-piece Windshield
- Heated Power Mirrors with Integrated Cameras
- Single Motor Intermittent Wiper
- Lockable Swing-out Storage Doors with Gas Shocks
- Window Awning Package (2 Windows)
- Full-body Paint with Protective Film on Front Cap
- Foil Wrap Insulation Barrier
- Remote Locking System for Entry Door
- Heated Water & Holding Tank Compartments
- Chrome Handles on Compartment Doors
- Deadbolt Front Entrance Door
- Double Electric Step
- Flush Mounted & Painted-frame Dual Pane Windows
- Exterior Patio LED Light
- Automatic Door Awning
- Metal Wrapped Automatic Patio Awning
- Motion Sensor Lighting for Exterior Storage
- 10.0 kw Onan® Manual Slide-out Generator
- Roof Ladder
- Electric Hose Reel
- Electric Power Cord Reel
- Fiberglass Front & Rear Caps
- Docking Lights
- Six 6 V Auxiliary Batteries
- Black Tank Flush System
- Water Filter
- Custom Mud Flap
- Undercoating
- Dual Fuel Fills
- 110 V Exterior Receptacle
- Digital TV Antenna
- Back-up Camera
- Cable Ready TV Hook-up
- Gravity Water Fill
- 2000 Watt Inverter with 100 Amp Converter & Transfer Switching

Available Options:

	36 GH	40 AH	40 QBH	40 QKH	42 LH	44 OH
One Storage Compartment Slide-out Tray	O	O	O	O	O	O
Two Storage Compartment Slide-out Trays	NA	O	O	O	O	O
Air Horns	O	O	O	O	O	O
In-motion Satellite Dish	O	O	O	O	O	O
Pre-wired for Winegard Trav'ler Satellite	O	O	O	O	O	O
Exterior TV	O	O	O	O	NA	NA
Two Low Profile Roof ACs with Heat Pumps	S	NA	NA	NA	NA	NA
Three Low Profile Roof ACs	NA	S	S	S	S	S
Aqua-Hot™ & All Electric Unit	O	O	O	O	O	O

GENERAL INTERIOR

Standard on All Models:

- 7' Ceilings
- Soft Touch Vinyl Ceiling with Trey Ceiling in Living Area
- Porcelain Tile Floor Throughout Coach
- Treated Carpet in Slide-outs
- High Gloss Raised Panel Hardwood Cabinet Doors
- Two Ducted Furnaces
- LED Lighting
- Solid Wood Cabinet Fascias & Doors with Concealed Hinges
- Complete Cable Wiring (Interfacing with Surround Sound & Satellite System)
- Home Theater Sound System with Concealed Speakers
- Direct TV® Receiver (Requires Subscription)
- Solar & Privacy Shades
- Fantastic® Power Roof Vents
- Tank Level Monitor System
- Smoke Detector
- Electric Step Well Cover
- Wardrobe with Automatic Light
- 12 V Disconnect Switch
- Extraordinaire™ AC System

Available Options:

	36 GH	40 AH	40 QBH	40 QKH	42 LH	44 OH
Cordovan Solid Cabinet Doors & Drawer Fronts	O	O	O	O	O	O
English Chestnut Solid Cabinet Doors & Drawer Fronts	O	O	O	O	O	O
Mocha Solid Cabinet Doors & Drawer Fronts	O	O	O	O	O	O
All Electric Coach	O	O	O	O	O	O
Stacked Washer/Dryer	O	O	O	O	O	O
Central Vacuum Cleaner	O	O	O	O	O	O
Heated Tile Floor	O	O	O	O	O	O

COCKPIT

Standard on All Models:

- Power Ultra Leather Driver & Passenger Seats with Passenger Footrest
- Contemporary Wraparound Dash
- Courtesy Drawer in Step Well
- Courtesy Light in Step Well
- Front Overhead TV
- Single CD Player & AM/FM Stereo
- USB Dash Receptacle
- Computer Slide-out Tray with Lock-out Rails on Passenger Side
- Power Solar & Privacy Windshield Shade
- Driver/Passenger Side Window Solar & Privacy Shades
- Color Rear Vision Monitor System with Side-view Cameras Activated by Turn Signals
- Dual Dash Fans
- Two Drawers in Dash
- Satellite-ready Radio Includes Receiver & Antenna (Requires Subscription)
- Integrated Seatbelt Brackets
- Fire Extinguisher
- Dual 12 V Dash Receptacle

Available Options:

	36 GH	40 AH	40 QBH	40 QKH	42 LH	44 OH
In-dash Navigation System	O	O	O	O	O	O

LIVING AREA / DINETTE

Standard on All Models:

- Ultra Leather Booth Dinette/Sleeper

Available Options:

	36 GH	40 AH	40 QBH	40 QKH	42 LH	44 OH
Dinette with Computer Workstation	O	O	O	O	O	O
Ultra Leather U-shaped Booth Dinette	O	O	O	O	O	O
Ultra Leather DE Sofa/Sleeper on Passenger Side	O	NA	S	S	S	S
Ultra Leather Hide-A-Bed Sofa/Sleeper on Passenger Side*	NA	NA	O	O	NA	NA
Entertainment Center with One Leather Recliner on Passenger Side	S	NA	NA	NA	O	O
Ultra Leather DE Sofa/Sleeper on Driver Side	NA	NA	S	S	NA	NA
Ultra Leather Hide-A-Bed Sofa/Sleeper on Driver Side	S	S	O	O	S	S
Ultra Leather L-shaped Chaise Sofa with Hide-A-Bed on Driver Side*	O	O	NA	NA	O	O
Two Ultra Leather Recliners on Driver Side**	NA	NA	O	O	NA	NA
Entertainment Center with One Leather Recliner on Driver Side***	NA	NA	O	O	NA	NA
Fireplace Below TV	O	NA	NA	O	O	O

*Air Coil Option not available on both Passenger & Driver Side. For 36 GH Air Coil Option on Passenger Side only available with Front Overhead TV.

**For 36 GH Leather Lift Recliners only available with Front Overhead TV.

***When Optional Entertainment Center is chosen, Pantry replaces Midsection TV. Fireplace below Living Room TV is also Optional only with this configuration.

KITCHEN

Standard on All Models:	<ul style="list-style-type: none"> Solid Surface Countertop with Stainless Steel Sink Solid Surface Sink Covers Expand-an-island Folding Solid Surface Cooktop Cover 	<ul style="list-style-type: none"> Sink Cover Storage Racks Underneath Sink Single Lever Sink Faucet with Sprayer Stainless Steel Microwave/Convection Oven Built-in Waste Can (Not Available with Dishwasher) 	<ul style="list-style-type: none"> Galley Splash Guards Stainless Steel Residential Refrigerator 3-burner Stainless Steel Cooktop Built-in Soap Dispenser 				
Available Options:		36 GH	40 AH	40 QBH	40 QKH	42 LH	44 OH
Dishwasher (Deletes Built-in Waste Can)		○	○	○	○	○	○

BEDROOM

Standard on All Models:	<ul style="list-style-type: none"> Bed Comforter with Throw Pillows Pre-wired for DVD & Satellite Receiver DVD Player in Bedroom with Surround Sound Under Bed Storage 	<ul style="list-style-type: none"> Pillow Top Queen Mattress Ceiling Fan TV Direct TV® Receiver (Requires Subscription) 	<ul style="list-style-type: none"> Carbon Monoxide Detector Wood/Fabric Headboard LPG Leak Detector Chest of Drawers with Laundry Hamper 				
Available Options:		36 GH	40 AH	40 QBH	40 QKH	42 LH	44 OH
Bunk Beds with Bunk Ladder/Convertible Wardrobe	NA	NA	NA	S	NA	NA	NA
DVD Monitors in Bunk Beds	NA	NA	NA	○	NA	NA	NA
King Bed Mattress (72" x 80")	NA	○	○	○	○	○	○
Air Comfort Mattress - Queen (60" x 80")	○	○	○	○	○	○	○
Air Comfort Mattress - King (72" x 80")	NA	○	○	○	○	○	○
Memory Foam Queen Mattress (60" x 80")	○	○	○	○	○	○	○
Memory Foam King Mattress (72" x 80")	NA	○	○	○	○	○	○

BATH

Standard on All Models:	<ul style="list-style-type: none"> Medicine Cabinet with Vanity Lights Skylight in Shower & LED Light Solid Surface Vanity Top & Bowl 	<ul style="list-style-type: none"> Solid Wood Custom Privacy Door 10-Gallon DSI Gas/Electric Water Heater Hand-held Shower Head with On/Off Switch 	<ul style="list-style-type: none"> 3-speed Fantastic® Fan 				
Available Options:		36 GH	40 AH	40 QBH	40 QKH	42 LH	44 OH
Tub (in Place of Shower)	NA	NA	NA	○	NA	NA	NA

WARRANTY

The Tiffin Five-Star Warranty.
The best in the business, bar none.



At Tiffin Motorhomes, we build for quality first and foremost, limiting our production to just 12 coaches a day to ensure meticulous craftsmanship. It may not be the most business-savvy way to run a company but it is the best way. By investing the time and effort to do things right, we want you, as a Tiffin owner, to have the utmost confidence in your coach, as well as a peace of mind you won't find with other manufacturers. You see, not only do we stand proudly behind our product, we stand behind you as well.

★ **10**

YEAR
CONSTRUCTION
WARRANTY

The structural integrity of the welded frame of entire coach is warranted for 10 years.

★ **5**

YEAR
DELAMINATION
WARRANTY

We guarantee against all exterior fiberglass delamination or wall separation for 5 years.

★ **1**

YEAR
COMPREHENSIVE
WARRANTY

Your coach is warranted against defects in materials and workmanship for 12 months, or 12,000 miles of use.

★ **1**

YEAR
COACH ROADSIDE
SERVICES

Available through Coach-Net, the country's largest RV emergency road service, this program provides 24/7 access to responsive roadside and technical assistance.

★ **Ongoing
Owner
Support**

No other motorhome company can compare with Tiffin's exceptional customer service. Email us at service@tiffinmotorhomes.com or call: **256/356.8661**.



A family business built around yours.

Tiffin Motorhomes is proud to be one of the few family-owned manufacturers in the industry, and it makes a significant difference in how our company operates versus our competitors. For starters, with the Tiffin name on every coach, building a superior motorhome isn't just our occupation. It's a matter of personal pride, a pursuit we have committed our lives to perfecting.

LEFT TO RIGHT: TIM TIFFIN, VAN TIFFIN,
BOB TIFFIN, AND LEX TIFFIN

GO TO TIFFINMOTORHOMES.COM

Visit us on the web for more information on the 2016 Phaeton and all 2016 Tiffin Motorhomes, along with the latest product and specification updates. Plus, watch videos and see other exclusive web content. You can also follow us on Facebook and Twitter.

FOR PARTS & SERVICE CALL [256/356.8661](tel:2563568661)

[FACEBOOK.COM/TIFFINMOTORHOMES](https://www.facebook.com/tiffinmotorhomes)

[TWITTER.COM/TIFFINMOTORHOME](https://twitter.com/tiffinmotorhome)