

SPRINTER

by Keystone

2007 TRAVEL TRAILERS AND FIFTH WHEELS



Camping made easy.

Camping made easy.

Introduced as Keystone RV's first product line in 1996, Sprinter's goals were simple; take the suggestions of our customers and make them the foundation for the Sprinter design. As a result of these efforts, Sprinter offers customers its proudest distinction from other brands: a product designed specifically to

“MAKE CAMPING EASY.”

Wouldn't it be nice to have an **outlet dedicated strictly for your patio lights** that you can turn on and off easily with a switch? That's right, no more messy cords!

How about a **LP quick-connect** that makes getting gas to your grill easy? No more hauling charcoal or extra LP tanks just for your grill!

What if you had **illuminated light switches** in those hard to see places in the middle of the night? You've got it! We make it easy to find the light for the bathroom while everyone is sleeping.

Look at the mattress, it's an **upgraded pillow top**. After all, you are camping to relax and we want to make it easy to get a good nights rest.

How do you dry your wet items like bathing suits or towels? Let us make it easy with our **retractable clothes line** in every tub and shower.

From a trash can in every kitchen to even an **easy folding picnic table** stored away in every unit, Sprinter “Makes camping easy.”

We at Sprinter understand that finding time to relax is often hard to do. So for the time you find to slow down and enjoy North America's beauty, we want you to be able to enjoy every minute of it.

Take a look at a Sprinter today and let us show you, how we “make camping Easy.”



There is never a shortage of storage with Sprinter. From the hidden trash can right by the door to the cleverly designed kitchen, we've maximized your storage by giving you a place for everything.

The easy-slide storage tray allows you to quickly and easily access camping gear stored under the dinette.



The bunk-house is the ultimate kid hangout.

After a long day of playing outdoors, kids will love relaxing with movies or games. When it's time to sleep pull out the trundle bed for additional sleeping space.





Feels like home, So relax, we make it easy.

From premiere residential furniture, large entertainment centers, to elegant window treatments, it is easy to see why Sprinter is America's first choice.

Viewing the standard 20" LCD TV from the living-room or master bedroom is easy with Sprinter's innovative rotating entertainment wall.

(Models 250, 311)



Standards and Options

Features and options not available on all models.

EXTERIOR FEATURE HIGHLIGHTS

- Automotive style fender skirts
- Lockable, radius baggage doors
- Rear bumper storage
- Gas bottle cover
- Easy opening triple entry step
- E-Z Lube™ axles
- Exterior grab handle for entry assist
- Tough guard painted skirt metal
- Patio light with switch
- Rain gutters and spouts
- Two 30 lb. LP bottles with auto change-over
- Patio awning
- "Store-More" pass-through storage compartment (TT)
- Roto-cast seamless holding tanks
- "Keystone Original" space-maker 56 gallon fresh water system
- Fiberglass front cap (High-Profile FW)
- Lighted storage compartments (FW)
- 36" 30-amp power cord
- Exterior water station
- Exterior BBQ hook-up
- Electric front jacks (FW)

FRAME

- Heated and enclosed underbelly
- Powder coated and cambered
- Individually designed maximum towability for each floor plan
- Extra cross members for additional support
- Fully welded outriggers for increased strength
- Continuous I-beam construction

FLOOR

- 2 x 3 floor joist on 12" maximum centers
- "Flex-Plex" freeze-resis-

- tant plumbing lines
- Glued, screwed and nailed floor decking
- R-11 insulation in floor
- One piece seamless 5/8" floor decking (up to 24')

SIDEWALL

- R-7 insulation in sidewalls
- Laminated aluminum framed side walls

ROOF

- R-11 insulation in ceiling
- One piece, triple-sealed rubber roof
- Residential style roof rafters 5" in thickness
- 3/8" fully walkable roof

SLIDE ROOM

- Track system for bulb seals
- Water release track system
- Slide room override
- Electric/hydraulic powered slide rooms
- Flush floor slide room
- Heavy gauge 2 x 2 steel tube carries slide room

INTERIOR FEATURE HIGHLIGHTS

- 13.5 ducted A/C with "Quick Cool"
- Water heater by-pass for easy winterization
- Residential cabinet hardware
- Large picture window at dinette
- Extra large entertainment center
- 6'3" interior slide room height (FW)
- 12V slide room lights for dry camping
- Home theater Surroundsound® system
- 30-amp distribution panel
- 12V, 55-amp converter
- 30,000 BTU auto-ignition furnace with thermostat
- City water connection
- In-floor ducted heat

- Central monitoring system for all tanks/battery/LP
- Wood slide fascia

KITCHEN

- 6 gallon gas/electric DSI auto-ignition water heater
- Endura™ solid-wood raised cathedral cabinets
- Decorative wall paper border
- 3-burner range with high output and piezo easy light
- Knife holder behind stove
- Deep 60/40 residential sink
- Metal drawer glides
- Spice rack
- Countertop flip-up extension
- Metal high arched faucet
- Lighted range hood with exhaust fan
- Microwave with carousel
- 17" oven
- 45" wide dinette with radius pedestal table (most models)
- Reversible dinette seat cushions
- EZ slide storage tray under dinette
- Decorative lighting above dinette
- Dometic double door refrigerator
- Overhead cabinets above sink
- Oversized pots and pans drawer

LIVING ROOM

- 78" interior living ceiling height
- Phone jack
- Cable TV hook up with antenna and booster
- Satellite prep
- High grade carpeting with pad
- Mastercraft furniture
- Residential fabric-covered valances with lambrequin legs
- Angle overhead storage in slide room
- Home theater DVD / CD

/ AM / FM / MP3

- Hide-a-bed sofa
- 20" LCD TV with 12 V power (250, 311)

BATHROOM

- Large vanity sink
- Porcelain foot flush toilet
- Residential medicine cabinet with mirror
- Shower curtain
- ABS one piece tub surround
- Skylight over tub
- Reinforced tub support
- Attic fan
- GFI receipts in bathroom

BEDROOM

- Residential carpeting
- Full walk around queen bed
- Cable TV hook-up
- Under bed storage with gas struts
- His and hers removable clothes hampers (High profile FW)
- Color matched bedspread
- Bedtime reading lights
- Pillow top mattress
- King bed (Bedroom slide models)

"CUSTOMERS FIRST" SAFETY PKG.

- Tinted safety glass windows
- Dual hitch safety chains
- Manual override for slide
- Fire extinguisher
- Smoke detector
- Carbon monoxide detector
- Egress windows
- LP gas leak detector
- Break away safety brake
- 4 wheel electric brakes
- Hitch light
- Door side and off door side clearance lights
- Scare light (FW)

"CAMPING MADE EASY" PKG.

- Laminated aluminum-framed sidewalls
- Enclosed underbelly
- Easy-store picnic table
- Exterior speakers
- Ultra-lube axles
- Overhead slide-room cabinets
- Skylight in shower
- Six gallon gas / electric DSI water heater
- Microwave
- Oven
- Patio awning
- Easy-find light switches
- 13.5 ducted A/C
- DVD home theater system with Surroundsound® system

POPULAR OPTIONS

- Stabilizer jacks
- Spare tire
- Residential refrigerator (371, 378)
- 10 gal. water heater (some models)
- Upgraded 15,000 BTU A/C
- Free-standing dinette with four chairs
- Extra-large refrigerator (FW)
- Six-panel refrigerator front (FW)
- Day/night shades (FW)
- Rear ladder (FW)
- Ceiling fan with light (High profile FW)
- Aluminum wheels (FW)
- Wire and frame for second A/C
- 50 Amp. service

Sprinter offers a wealth of high quality features usually found in much higher priced travel trailers and fifth wheels.

We thought of everything.



Having an extra picnic table is wonderful especially when you have an easy place to store it.



Illuminated light switches eliminates fumbling around in the dark.



Easy ZZZ's pillow top mattress shapes to the contours of your body.



The residential porcelain toilet with foot flush offers hands free operation.



EZ lube axles provide a quick and easy way to grease your wheel bearings.



Sprinter diamond plate protects the front of the coach from road debris.



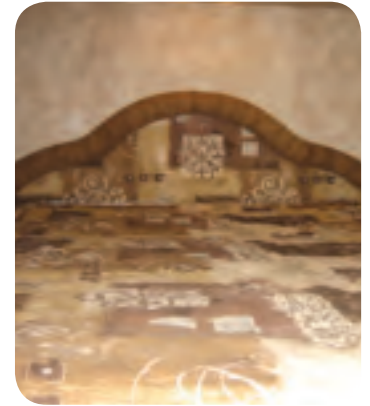
Triple entry step provides a safe, convenient, lower first step.



Sprinters oversized U-shaped dinette allows the whole family to enjoy meals together.



Residential glass shower door makes cleaning a snap.



King size bed gives you ample room to stretch and relax.



Oversized pots and pans drawer gives you more than enough room to store your cooking items.



The easy-access plug-in for your exterior lights means no more messy extension cords.



The exterior water station connects to any garden hose, perfect for outside water needs.



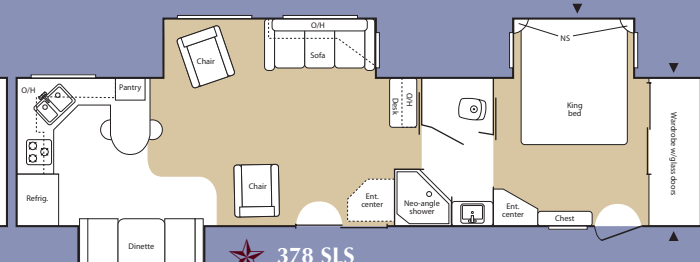
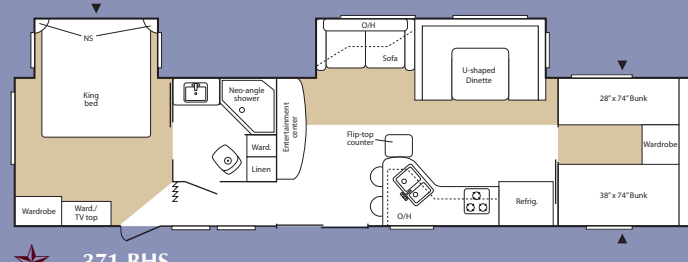
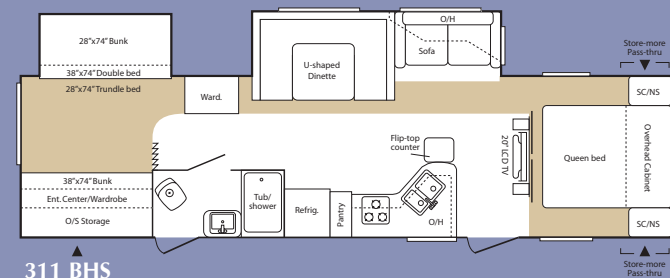
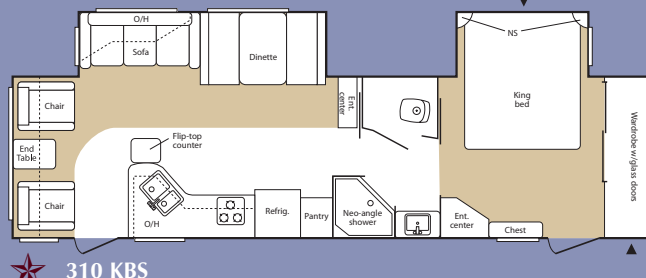
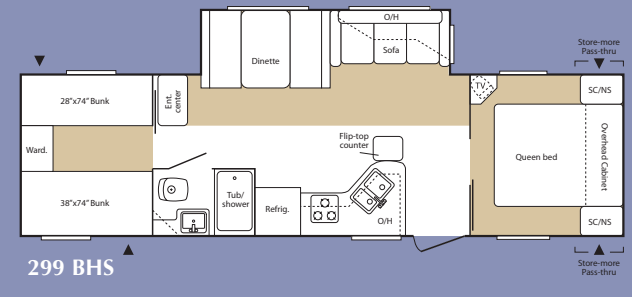
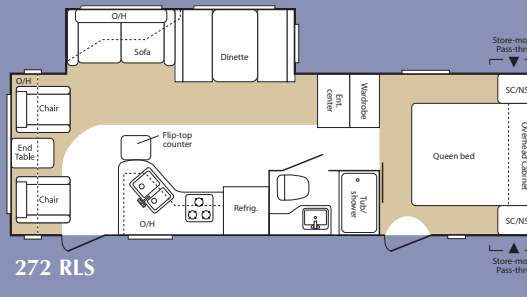
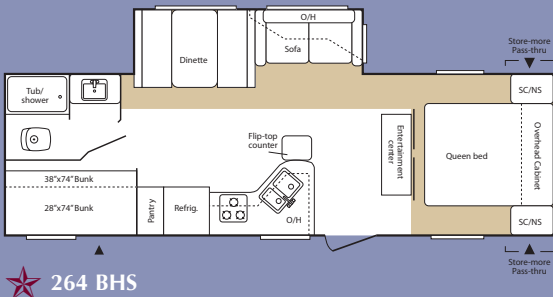
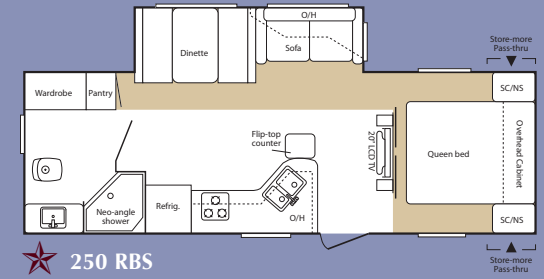
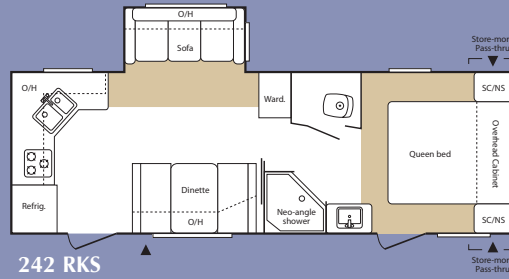
Your quick connect barbecue extension makes grilling a snap. No more toting extra propane tanks.



Outdoor stereo speakers enable you to listen to music and sports. No need for a second radio.

SPRINTER

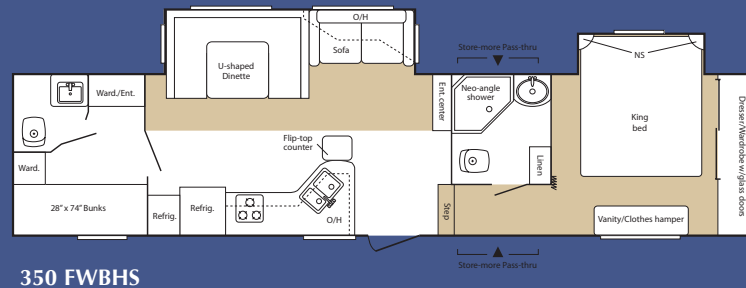
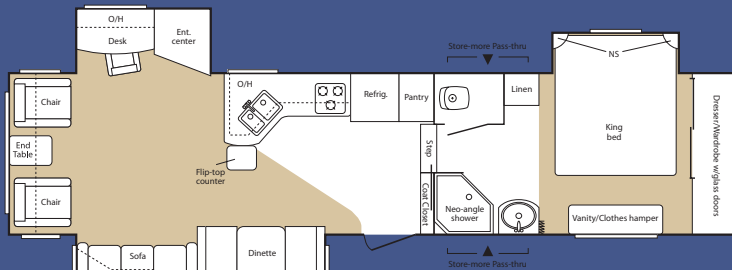
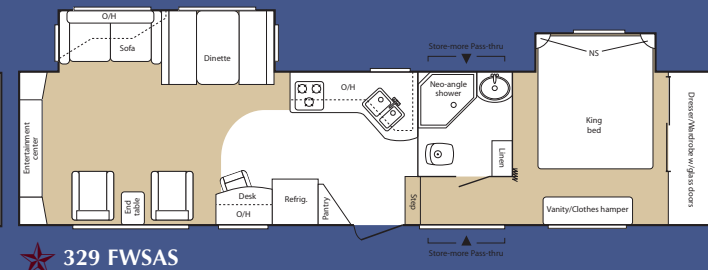
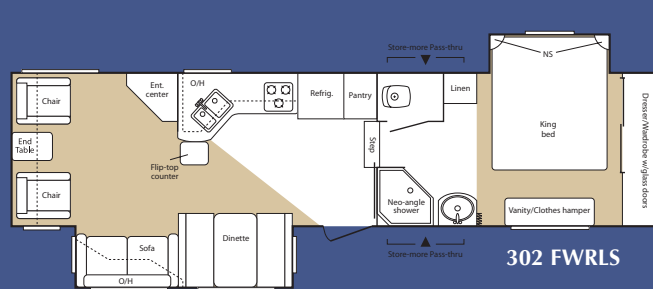
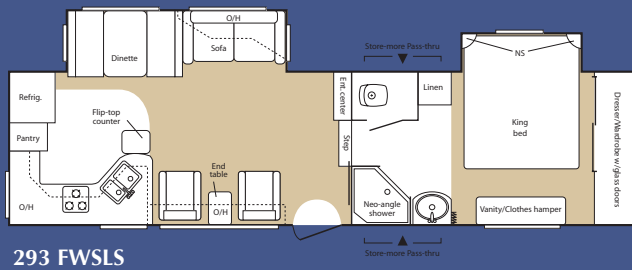
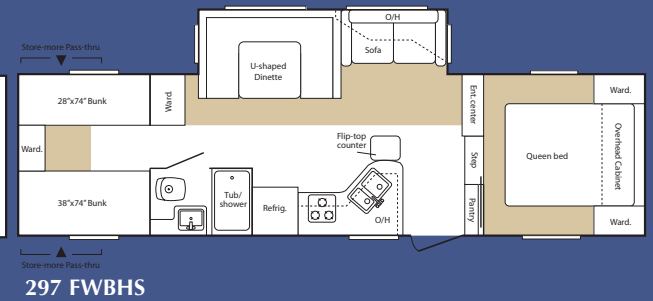
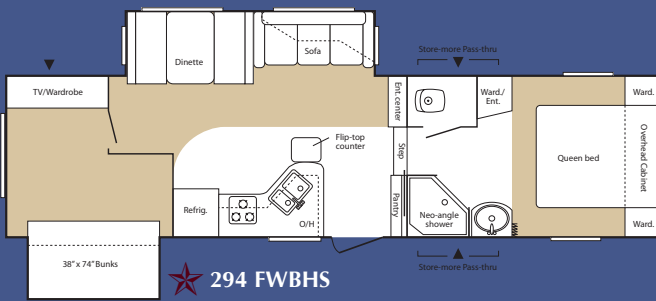
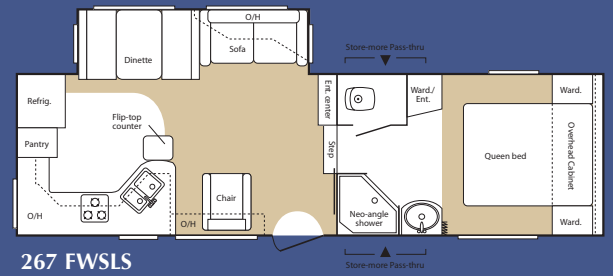
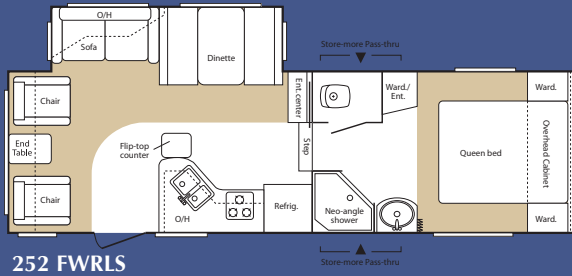
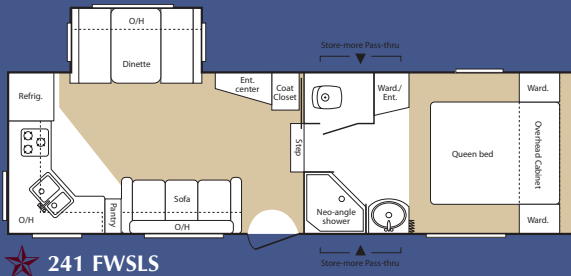
Laminated, aluminum-framed Travel Trailers



▲ = Outside Storage

★ NEW '07 FLOORPLAN!

COPPER CANYON Fifth Wheels



▲ = Outside Storage

★ NEW '07 FLOORPLAN!

Sprinter Travel Trailer Specifications

	242RKS	250RBS	264BHS	272RLS	299BHS	300KBS	310KBS	311BHS	312SLS	371BHS	378SLS
Shipping Weight	6135	6480	6525	6470	7095	7770	8195	8365	7055	8910	TBD
Carrying Capacity	3185	2900	2885	2920	2620	3460	2980	2610	2530	2325	TBD
Hitch	520	580	610	590	915	1070	1015	815	785	1075	TBD
Exterior Length	28' 2"	28' 11"	30' 6"	29'8"	33' 2"	34' 5"	35'3"	35' 4"	34'6"	39'8"	TBD
Exterior Width	8'	8'	8'	8'	8'	8'	8'	8'	8'	8'	8'
Ext Height	10' 10"	10' 10"	10' 10"	10'10"	10'10"	11' 1"	11'1"	11' 1"	11'1"	11'1"	TBD
Fresh Water	50	50	50	50	50	50	50	50	50	50	50
Waste Water	42	30	30	34	34	34	34	34	34	34	34
Grey Water	74	68	60	64	34	64	64	68	64	64	TBD
Tire Size	225/ 75D15D	225/ 75D15C	225/ 75D15D	225/ 75D15D	225/ 75D15D	225/7 5D15D	225/ 75D15D	225/ 75D15D	225/ 75D15D	225/ 75D15D	225/ 75D15D
Number of Slides	1	1	1	1	1	2	2	2	1	2	3
Awning	16'	16'	16'	18'	18'	21'	21'	18'	21'	21'	TBD

	241FWSL	252FWRLS	267FWSL	286FWRLS	294FWDBS	297FWBHS	293FWSLS	302FWRL	329FWSAS	339FWTSL	350FWBHS
Shipping Weight	TBD	7080	7330	TBD	8105	7755	9180	9190	9260	10230	9820
Carrying Capacity	TBD	2870	2600	TBD	3340	3945	2750	2870	3000	3950	2465
Hitch	TBD	1150	1130	TBD	1285	1540	1770	1900	2100	2180	2125
Exterior Length	TBD	27' 7"	28' 5"	TBD	32' 2"	31' 6"	32'2"	33' 3"	34'	36' 10"	36' 9"
Exterior Width	8'	8'	8'	8'	8'	8'	8"	8'	8'	8'	8'
Ext Height	TBD	11' 11"	11' 11"	TBD	11'11"	11'11"	12'4"	12' 4"	12' 4"	12' 4"	12' 4"
Fresh Water	50	50	50	50	50	50	50	50	50	50	50
Waste Water	42	42	42	42	42	42	42	42	32	42	84
Grey Water	TBD	42	74	TBD	74	42	74	74	68	84	84
Tire Size	225/ 75D15C	225/ 75D15C	225/ 75D15D	225/ 75D15C	225/ 75D15D	225/ 75D15D	225/ 75D16E	225/ 75D16E	225/ 75D16E	235/ 85R16E	225/ 75D16E
Number of Slides	TBD	1	1	TBD	1	1	2	2	2	3	2
Awning	TBD	18'	16'	TBD	18'	16'	21'	16'	18'	16'	21'

Copper Canyon Fifth Wheel Specifications

	Main Fabric	Accent	Border	Carpet
Cabernet				
Cypress				
Sandstone				

SPRINTER COPPER CANYON

Keystone RV Company

2642 Hackberry Drive • P. O. Box 2000 • Goshen, IN 46526
574-535-2100 • www.keystone-sprinter.com



Your Sprinter / Copper Canyon dealer is:

Product information is as accurate as possible as of the date of publication of this brochure. Features, floor plans, and specifications are subject to change without notice. Please also consult Keystone's web site at keystonerv.com for more current product information and specifications. Tow Vehicle Disclaimer. CAUTION: Owners of Keystone recreational vehicles are solely responsible for the selection and proper use of tow vehicles. All customers should consult with a motor vehicle manufacturer or their dealer concerning the purchase and use of suitable tow vehicles for Keystone products. Keystone disclaims any liability or damages suffered as a result of the selection, operation, use or misuse of a tow vehicle. KEYSTONE'S LIMITED WARRANTY DOES NOT COVER DAMAGE TO THE RECREATIONAL VEHICLE OR THE TOW VEHICLE AS A RESULT OF THE SELECTION, OPERATION, USE OR MISUSE OF THE TOW VEHICLE. January 2007