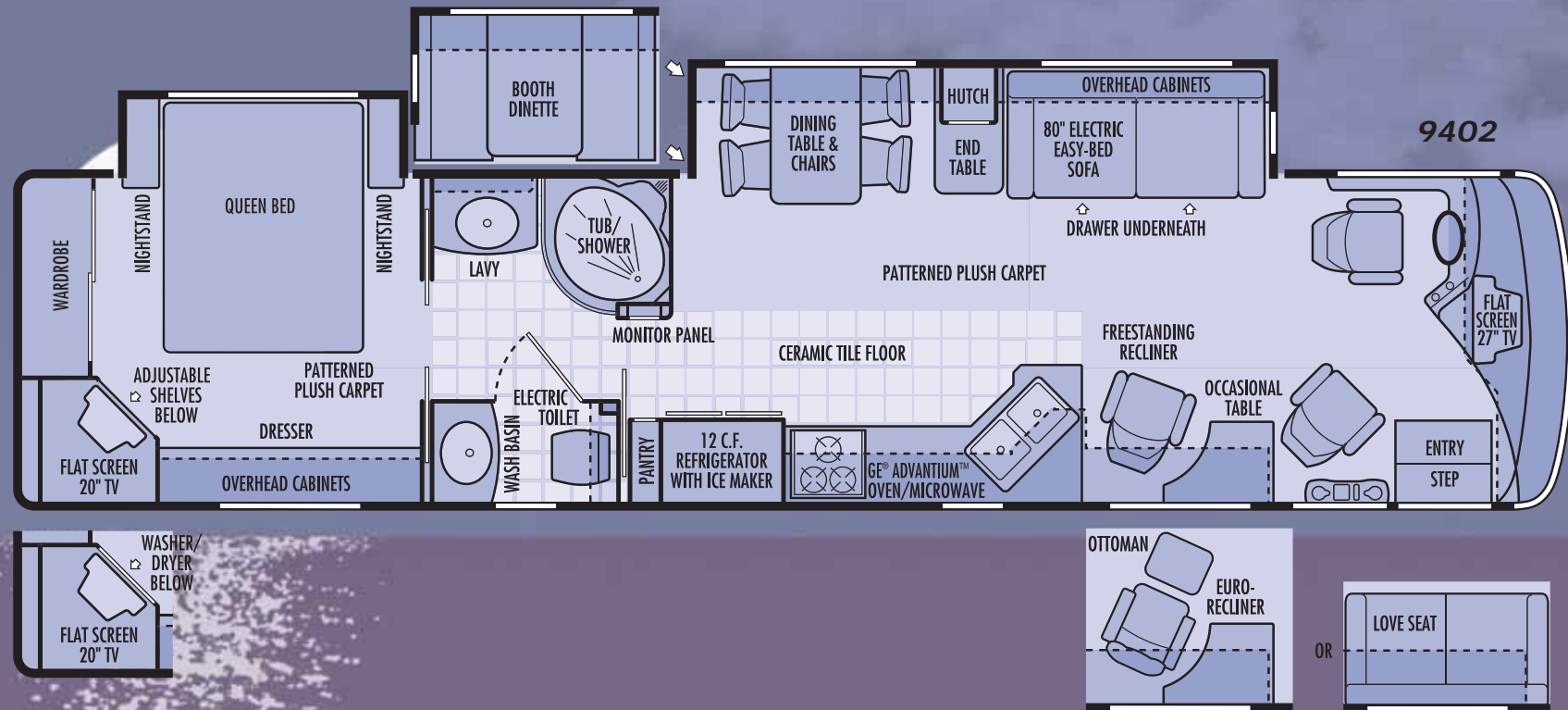


ISLANDER



DynoMax 10TD^x

Dyno-Tuned Chassis by COUNTRY COACH

Chassis	Country Coach Dynomax®
Chassis Design	Dynomax® 10TD ^x tube frame chassis system by Country Coach
Steering Gear	TRW TAS 85 integral hydraulic power steering gear
Tires	Steel belted radial tires Toyo® 12R x 22.5 (H)
Wheels	Four 8¼" x 22½" aluminum alloy wheels; two inner dual steel wheels; 10 lug
Service Brakes	Full air brakes with ABS; 16.5" x 7" drums (rear) s-cam style, automatic slack adjusters

Parking Brake Alternator	Spring applied, air release on rear drum brakes
Chassis Batteries	Leece-Neville® 160 Amp alternator Group 8 battery with slide-out tray Remote chassis battery disconnect
Front Suspension	Neway® independent front suspension
Rear Suspension	Neway® AD-200 20,000 lb. capacity
Spring Type	Neway® full air suspension system with electric air dump
Shock Absorbers	Koni® hydraulic adjustable
Driveline	Dana® Spicer 1710 series
Drive Axle	Meritor® RS-21-145
Drive Axle Ratio	4.63:1
Fuel Capacity	150 gallon fuel tank with dual fuel fills; Fleetguard® fuel/water separator
Engine Block Heater	120V 1,000 watt engine block heater

Cooling Pack Mounting	Side mounted
Charge Air Cooler	Cross flow
Transmission Oil Cooler	Remote mounted; water to oil
Cooling Fan	Variable speed hydraulic
Air Intake Restriction Indicator	Filter Minder® air intake restriction indicator
Other features	Two auxiliary air outlets Curbside access to service center
Towing Equipment	Fuel/water separator remote mounted in utility compartment 10,000 lb. Class III hitch receiver with skid bar and six-pin electrical connector
Chassis Warranty	2 years/unlimited miles
Engine	Cummins® ISL, Electronic Diesel
Displacement	8.9L
Peak Horsepower	400 HP @ 2,000 RPM

Peak Torque	1,200 lb/ft torque @ 1,300 RPM
Engine/Exhaust Brake	Two stage Jake Brake®
Engine Warranty	5 years/100,000 miles
Transmission	Allison® MH 3000
Transmission Type	Six speed automatic with 2 overdrive gears
Gear ratios	3.49:1 First gear 1.86:1 Second gear 1.41:1 Third gear 1.00:1 Fourth gear 0.75:1 Fifth gear 0.65:1 Sixth gear -5.03:1 Reverse
Transmission Shifter	Keypad electronic shifter with digital display
Transmission Warranty	3 years/unlimited miles

Due to continued product improvement, National R. V., Inc. reserves the right to change materials, colors, specifications and prices at any time without notification. Copyright © 2002 by National R. V., Inc. 07/02



ISLANDER FEATURES & SPECIFICATIONS

BODY CONSTRUCTION

- Steel framed laminated floor
- Steel framed crowned laminated fiberglass roof
- Steel framed laminated fiberglass high gloss walls
- Custom painted three color full body exterior graphics with choice of three color packages
- Molded, high gloss, full fiberglass caps with integrated front and rear bumpers
- Soft touch interior ceiling material
- HWH hydraulic slide-out rooms
- Fiberglass exterior storage compartment doors, insulated with single integrated paddle latches and struts
- Dual directional roll-out compartment storage tray
- Basement storage compartment partitions
- Convenience D-Ring mounts in basement storage compartments
- Automotive undercoating as required
- Steel insulated front bulkhead

COCKPIT FEATURES

- Pioneer® AM/FM stereo with CD player, XM™ receiver and remote control
- Pioneer® multi-disc CD changer
- Driver and passenger gooseneck reading lights
- Custom dash in high gloss walnut finish with full white faced gauge package
- Dual comfort control cockpit heater and air conditioner
- Convenience tray
- Auxiliary driving lights
- Pantographic windshield wipers
- Power steering
- Electronic cruise control
- Douglas® tilt and telescoping steering column with 18" VIP® Smart Wheel
- Roof mounted dual chrome trumpet air horns
- Rear vision system with microphone
- Chrome power controlled heated exterior mirrors with power convex control
- Four high powered docking lights
- Power Gear® fully automatic leveling jacks
- Passenger workstation with 12V receptacle and 110V receptacle
- Aviation style sun visors
- Cup holders
- Two 2-speed dash fans
- Electric stepwell cover
- CB radio ready
- Wraparound privacy curtain with easy reach wand
- Illuminated stepwell

APPLIANCES & ACCESSORIES

- RCA® 27" flat screen TV with front A/V jacks in cockpit
- RCA® Hi-Fi VCR in cockpit
- RCA® DVD with Dolby Digital 5.1 receiver and home theater speaker package
- RCA® 20" flat screen TV with front A/V jacks in bedroom

- 12 cu. ft. side-by-side refrigerator with icemaker and pantry
- High output three burner cook top with flush mount Corian® range cover
- GE Advantium™ oven/microwave
- Systems monitor panel
- Cable TV hook-up and multiple telephone jacks
- Wall mounted AM/FM stereo with CD, clock, alarm and inside temperature monitor in bedroom
- Kingdome® automatic stationary satellite dish
- Winegard® TV antenna
- Satellite receiver in cockpit with IR remote

FURNITURE

- Flexsteel® monogrammed UltraLeather™ 8-way power driver recliner seat with swivel base, adjustable armrests and integrated seatbelt
- Flexsteel® monogrammed UltraLeather™ 8-way power passenger recliner seat with swivel base, adjustable armrests, integrated seatbelt and power footrest
- Flexsteel® 80" fabric sleeper sofa with power easy bed, armrests and drawer underneath
- Freestanding Flexsteel® UltraLeather™ swivel recliner chair with footrest and occasional table

INTERIORS

Throughout Coach

- Maple paneling and doors
- Solid wood raised panel cabinet doors and face framing
- Deluxe overhead storage doors with telestrut hardware; positive catches on all other doors
- Drawers with ball bearing roller guide design

Cockpit Area

- Patterned floor mats

Living Area

- Fabrica® patterned plush carpet with deluxe pad
- Pleated day/night shades
- Valances and lambrequins
- Magazine rack
- Freestanding Corian® topped dinette table with four high-back wooden chairs
- Designer hutch with Corian® surface

Kitchen Area

- Corian® Kitchen countertop with color band and Corian® sink cover
- Corian® surface countertop extension (lounge slides only)
- Slide-out pantry
- Wastebasket
- Silverware organizer
- Beveled mirror galley backsplash
- Patterned ceramic tile floor
- Venetian blind and Corian® valance

Bath Area

- Patterned ceramic tile floor
- Corian® surface bathroom lavy top with color band
- Porcelain oval lavy sink

- Raised panel doors
- Insulated skylight in shower
- Towel bars
- Medicine cabinet
- Window in private toilet room
- Residential style pocket doors
- Residential toilet room door with hardware

Bedroom Area

- Fabrica® patterned plush carpet with deluxe pad
- Pleated day/night shades
- Valances and lambrequins
- Raised panel doors
- "Latitude Elite" residential-style pillow top mattress
- Queen bed slide-out
- Coordinate bedspread, pillows and shams
- Radius padded headboard
- Nightstands with Corian® tops with color band
- Cedar lining in wardrobe
- Rear wardrobe with mirrored sliding doors
- Wall dresser with drawers and laundry hamper
- Residential style closet rods

ELECTRICAL SYSTEMS & LIGHTS

- 50 Amp 120V distribution panel and cord
- 50 Amp shore power cord with power reel
- Dual 21 watt solar panels
- Onan® QD 8.0 kW diesel generator
- 2,000 watt PureSine inverter/converter with remote on/off switch
- Two Group 8 house batteries
- Slide-out battery tray
- Two 760 CCA 12V maintenance-free chassis batteries
- Battery disconnect switch
- Hella® headlight package
- Porch light
- Patio receptacle
- Advanced zone control switch multiplexing system
- Decorative overhead dining light
- Cosmetic light in bathroom
- Decorative lights in living area
- Courtesy light at entry-door switch panel
- Fluorescent lights in ceiling
- Decorative indirect mood lights

PLUMBING & LPG SYSTEMS

Coach Exterior

- Heated and insulated holding and water tanks
- Electrical dump valves
- Pressurized water fill with regulator
- Variable rate water pump
- Water heater by-pass valve
- Winterization antifreeze inlet to pump
- Holding tank rinsing system (waste tank only)
- Outside shower
- Electric hose reel

Kitchen Area

- Water filter in kitchen
- Delta® single lever brass faucet with pullout sprayer

Bedroom/Bathroom Area

- Thetford® electric porcelain toilet with sprayer
- Round, glass shower enclosure with etched decorative design for privacy
- One piece fiberglass tub and shower
- Delta® single lever brass faucet
- Pre-plumbed for washer/dryer in bedroom
- 10 gallon gas/electric water heater

SAFETY FEATURES

- Fire extinguisher
- Deadbolt lock on entrance door
- 12V GFI protected circuits (kitchen, bath and exterior)
- Smoke, carbon monoxide (CO) and LPG detectors
- Driver and passenger integrated three point lap and shoulder seatbelts
- Egress window
- Deluxe acrylic exterior assist handle

WINDOWS, DOORS & AWNINGS

- Tinted dual pane windows
- Power double entrance step with light and anti-skid
- Tinted skylight in bathroom
- Ventilated windows of sides of slide-out rooms (lounge slides only)
- Electric patio awning with metal cover
- Electric front entry door awning
- Slide-out topper awnings on living room, galley slide and bedroom slide

VENTILATION

- Dual 13,500 BTU Duo-Therm® low profile Penguin® air conditioners with heat pumps, two-speed fans and in-ceiling ducting
- Two-speed 35,000 BTU and 20,000 BTU furnaces
- 12V Fan-Tastic® Vent in bathroom
- 12V Fan-Tastic® Vent with wall thermostat and rain sensor in living area

OPTIONAL FEATURES

Exterior

- Dual directional roll-out compartment storage tray
- Aluminum two-piece rear ladder
- Manual living room and bedroom window awning package

Throughout Coach

- Walnut paneling and doors
- Cherry paneling and doors

Furniture

- Flexsteel® monogrammed UltraLeather™ 8-way power extra-wide passenger recliner seat with swivel base, adjustable armrests, integrated seatbelt and power footrest

- Flexsteel® UltraLeather™ 80" sleeper sofa with power easy bed, armrests and drawer underneath
- Freestanding Flexsteel® UltraLeather™ Euro-recliner with ottoman and occasional table
- Flexsteel® UltraLeather™ love seat

Living Area

- Corian® topped booth dinette with slide-out storage drawers

Bedroom/Bathroom Area

- Combination washer/dryer

WEIGHTS (POUNDS)	9402
Dynomax	
Gross Vehicle Weight Rating	34,400 lbs.
Gross Combined Weight Rating	44,400 lbs.
Front Gross Axle Weight Rating	14,400 lbs.
Rear Gross Axle Weight Rating	20,000 lbs.
Unloaded Vehicle Weight	29,670 lbs.
Maximum Carrying Capacity	4,730 lbs.
Cargo Carrying Capacity	2,840 lbs.
MEASUREMENTS	
Wheelbase	275"
Overall Length	39' 10"
Exterior Height (Road Height)	12' 4"
Exterior Height (with Satellite)	12' 7"
Interior Height	79 1/2"
Interior Width	97 1/2"
Exterior Width	102"
TANK CAPACITIES	
Fuel	150 gal.
Water Heater	10 gal.
Gray Tank	70 gal.
Black Tank	70 gal.
Fresh Water Tank	125 gal.
LP-Gas (Volume W.C.)	42.7 gal.