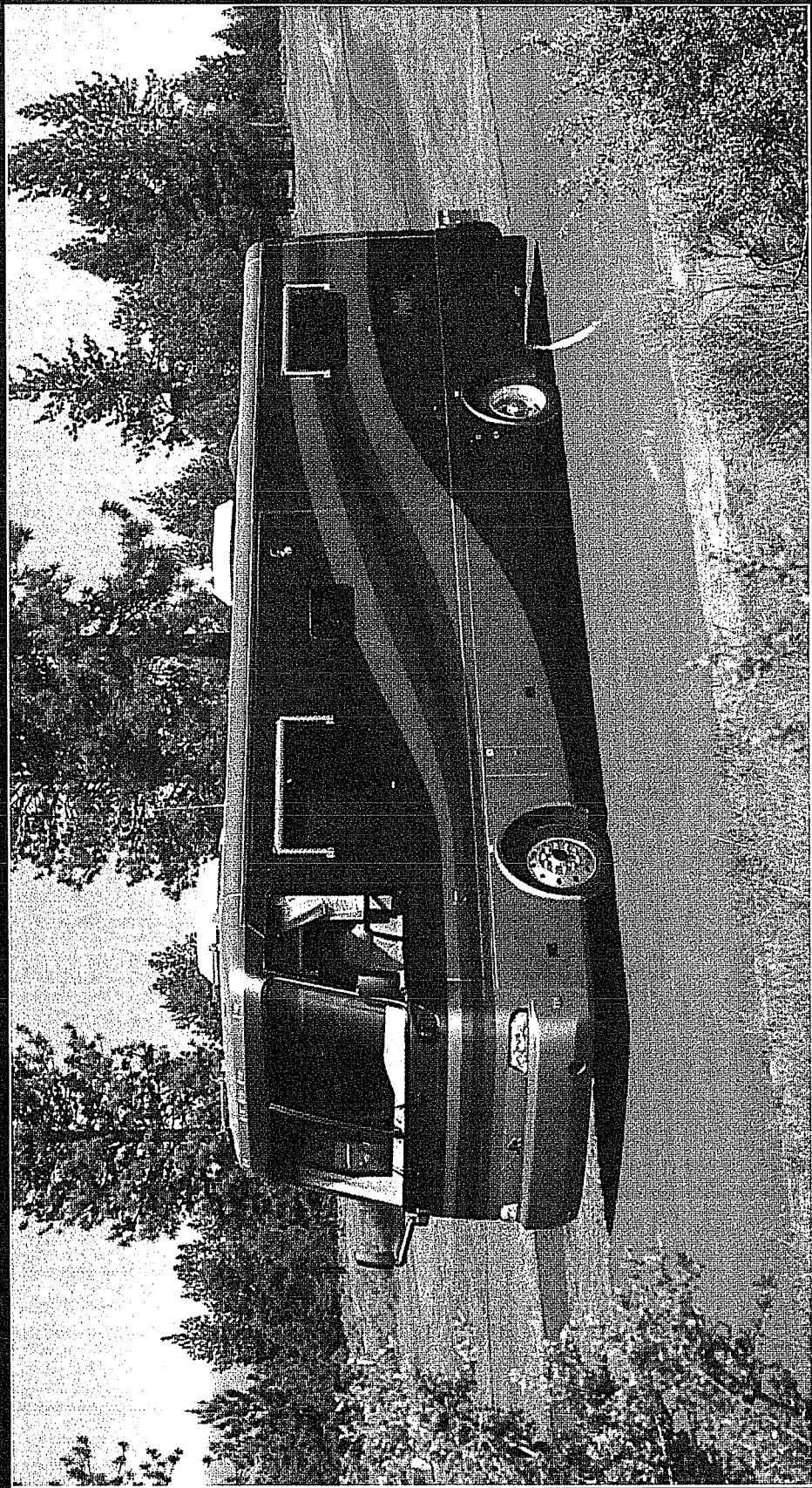
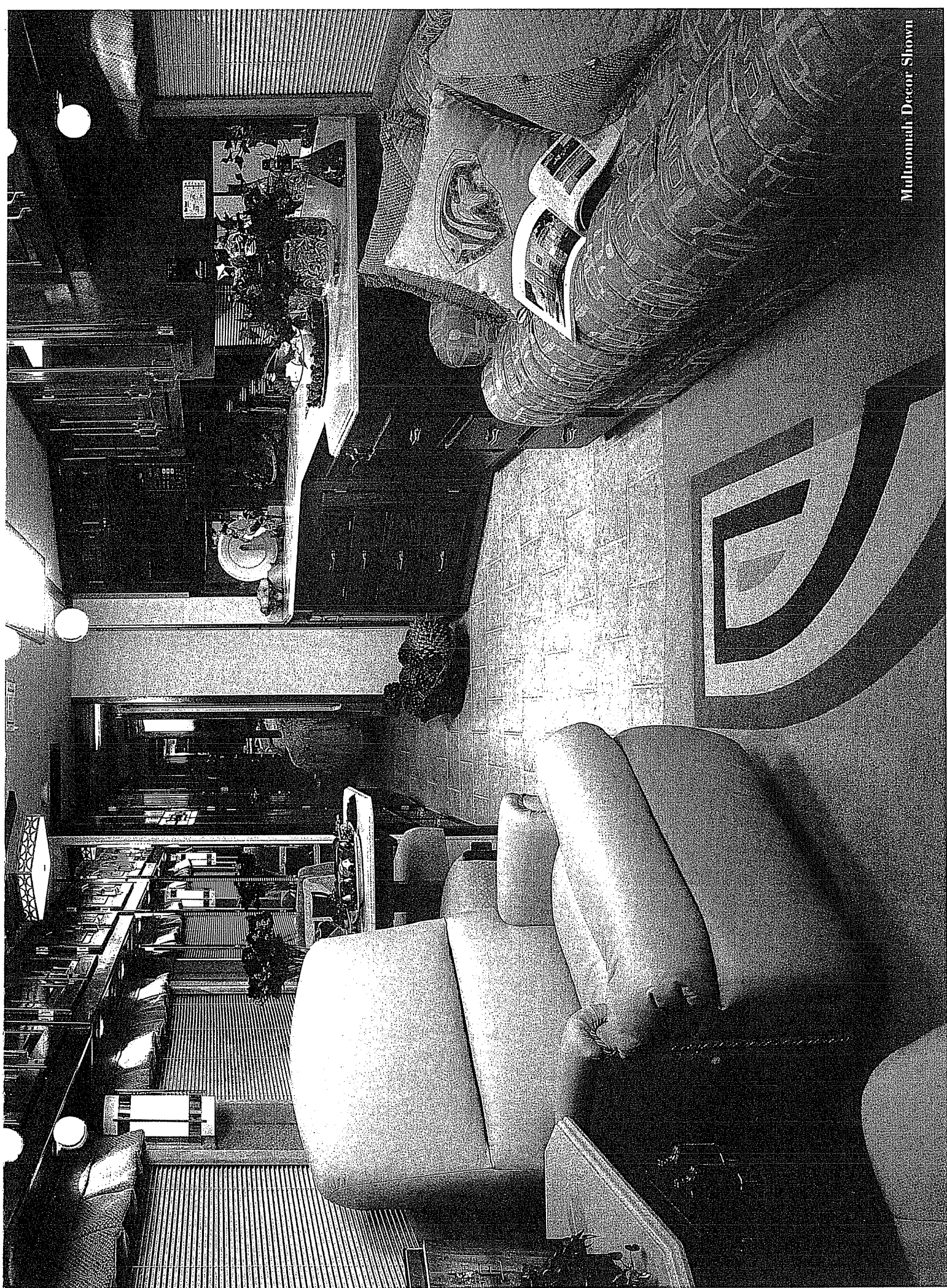


**Beaver 2000**

**Patriot**





Multnomah Decor Shown



## Ageless Beauty . . .

Beaver Motor Coaches 2000 Patriot is a motor coach to behold. The beauty of Patriot beckons, from the comfortable cockpit to the inviting and opulent new bedroom slide-out. Bask in the luxury and richness of this coach, both inside and out. The value-rich, luxury laden Patriot offers more features than any other in its class.

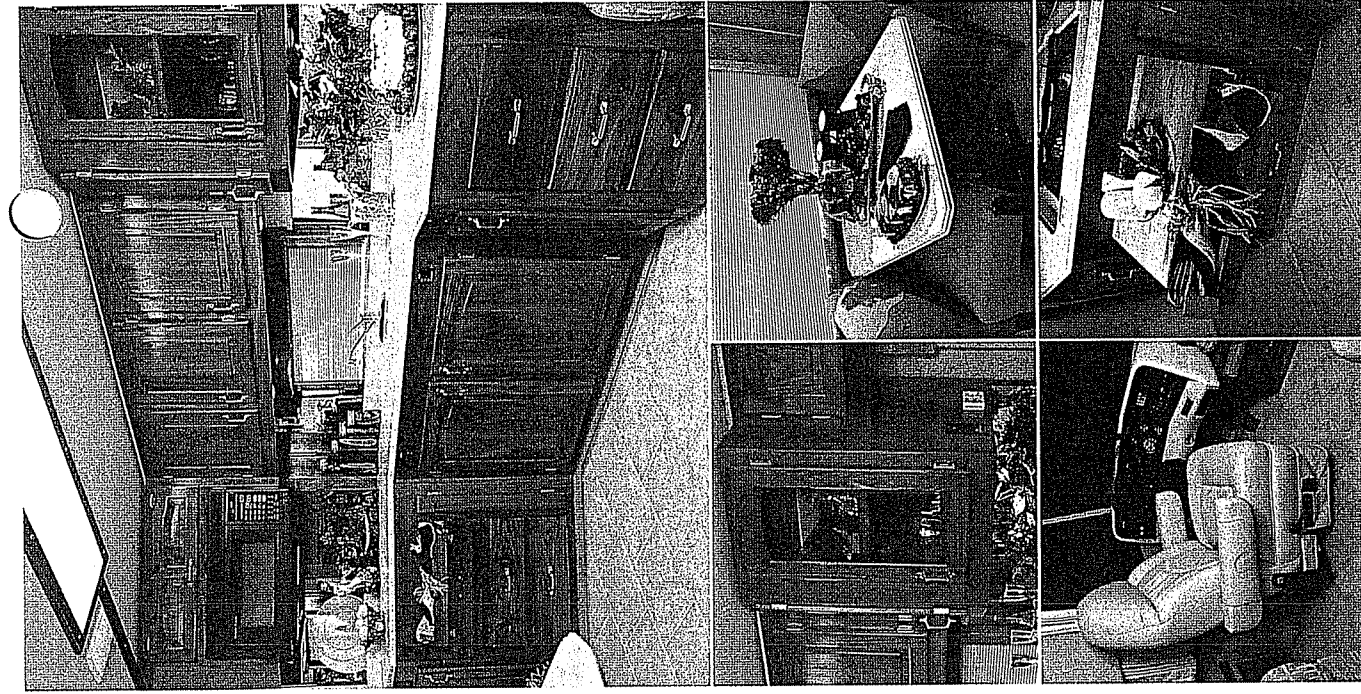
Sleep in comfort with the commodious Patriot bedroom slide-out. Enjoy the extra livability this special feature affords by simply pressing a button. Watch your favorite movie on a 20" Sony® remote controlled color TV. With an abundant amount of drawer and storage space, any RV enthusiast will appreciate this well appointed bedroom.

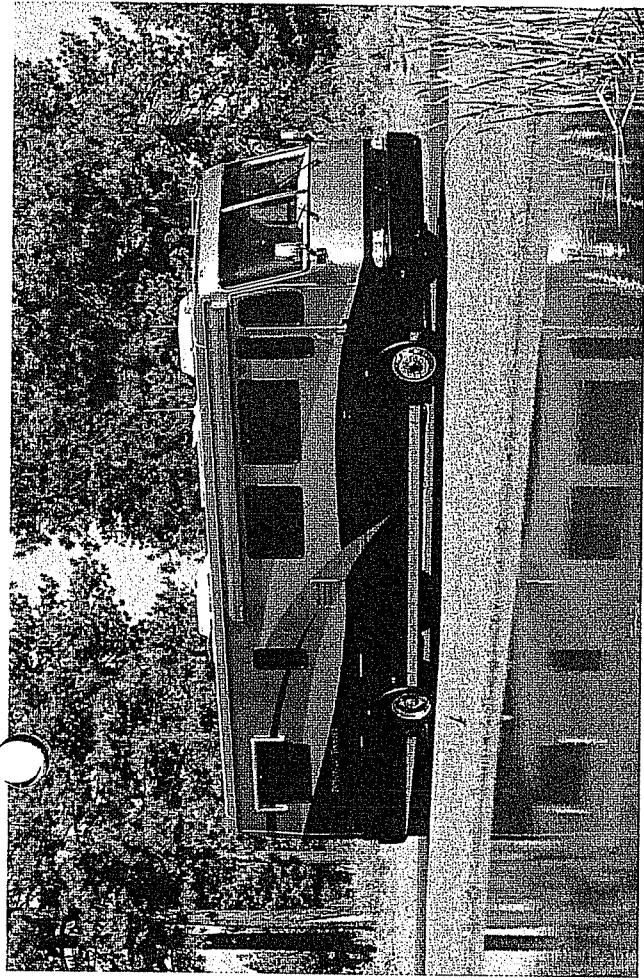
Spacious and inviting, Patriot's amazing livability begins up front with the user-friendly custom dash panel. Drive in comfort with the luxurious feel of UltraLeather™ cab seats. Tame your engine with our new exclusive VMS 200EL™ System which delivers advanced engine diagnostics at the touch of a button. Arrive refreshed to your destination with the ease of operation that Patriot provides.

Exquisite hardwood cabinetry speaks of elegant living and a bygone era, a time when hand craftsmanship and pride were the cornerstone of quality. Whether choosing walnut, rift-cut medium oak, or rift-cut white washed oak, each lacquered beauty reflects the distinctive Patriot excellence.

Spacious interiors amplify the home-like experience. Step onto the luxuriant hand-sculpted carpeting. Feel the smooth FountainHead™ countertops. Walk across the stylish ceramic tile floor. Savor each facet of this ample environment.

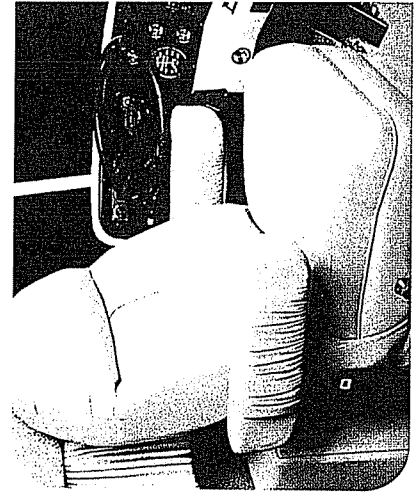
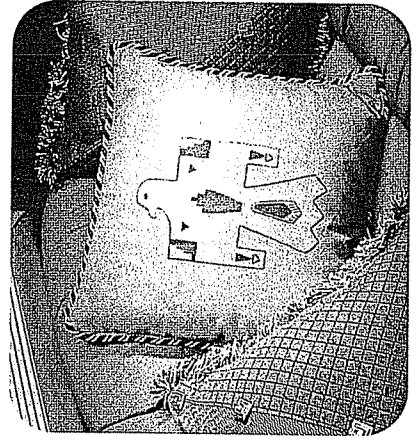
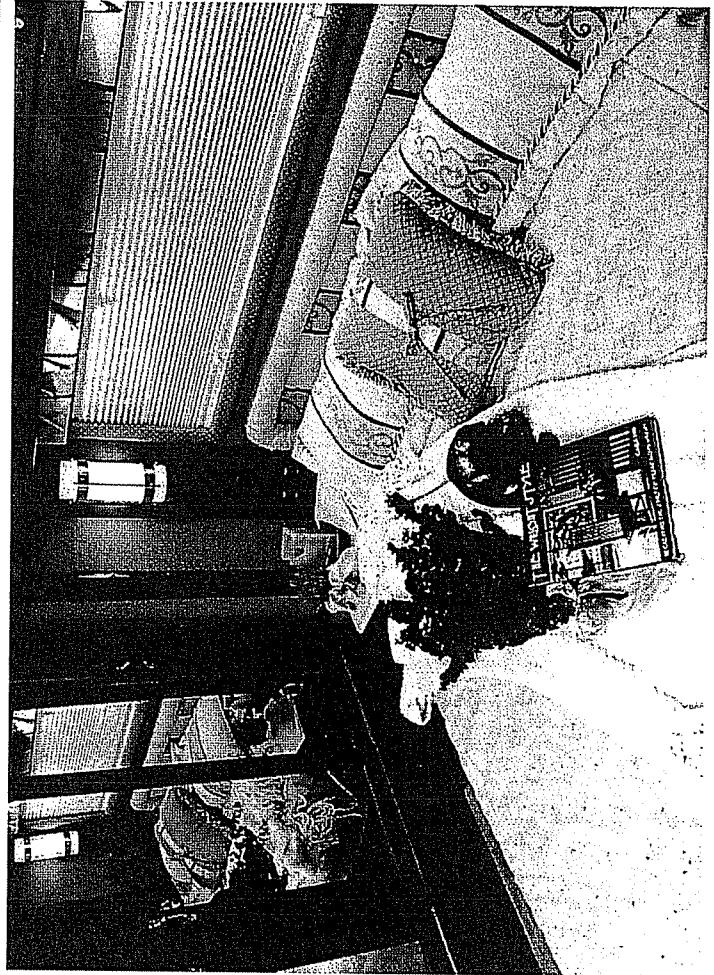
Enjoy the warmth of the interior fabrics. Whether your tastes are contemporary or conservative, we have a color combination for you. Choose from three distinguishing color choices; each is a unique package of hue and texture.

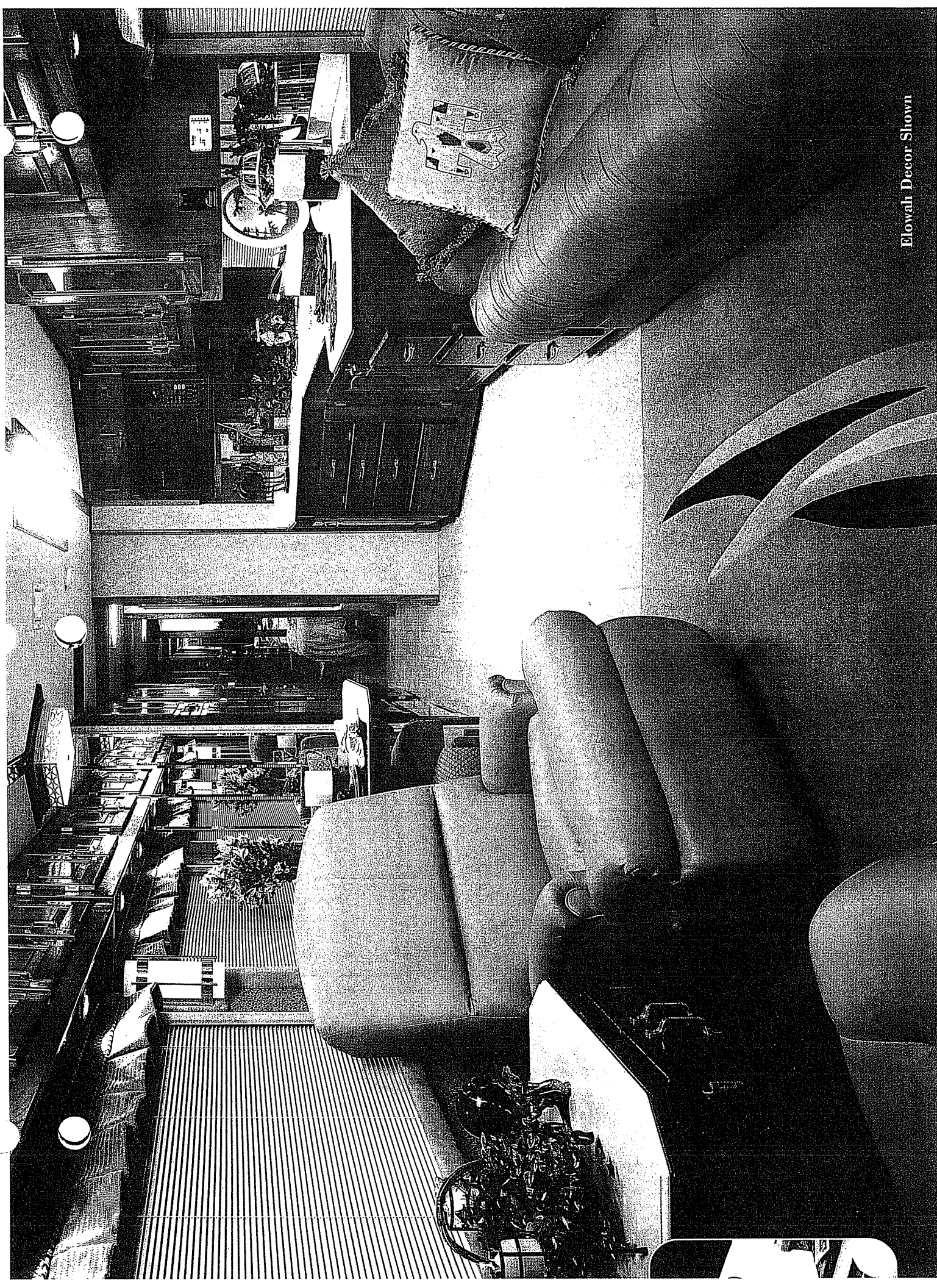




## *Thunder Transforms . . .*

Elevate the Patriot to a new level of luxury and power with the optional Thunder package. Special designer touches swathe the interior like an artist's brush on canvas. Embroidered logos, designer pillows and special decor create a distinct ambiance. When ordered, Beaver builds the Patriot 425 Thunder with a Caterpillar C-12 engine that delivers 425 HP and 1,550 ft. lbs. of torque. Now there is a real choice for beauty, luxury and extraordinary power.





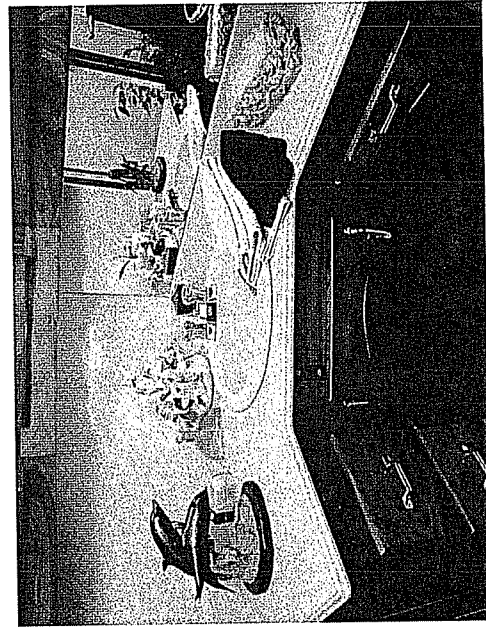


## Chassis and Engine Specifications

<b>Chassis-</b>	Magnum® B30A330 "Magnum-Air"
<b>Engine-</b>	Caterpillar® 3126B Turbocharged Computerized Electronic Diesel Engine
<b>Horsepower-</b>	330HP @ 2,400 rpm
<b>Torque-</b>	860 lb.-ft. @ 1,440 rpm
<b>Transmission-</b>	Allison® MD3060 6-Speed World Transmission with 2 Overdrives
<b>GVWR-</b>	31,000 lbs.
<b>GCWR-</b>	36,000 lbs.

Beaver's precise manufacturing methods and careful selection of proven components makes the Patriot well-known in the motor home industry. From the confidence of the Magnum® chassis to the beauty of the hand-crafted solid hardwood cabinetry, this coach is built for long-lasting use and enjoyment.

Enjoy the warm sunlight as it gently spills through an insulated skylight in the bathroom. Choose between a circular shower or garden bathtub, both including a glass enclosure.

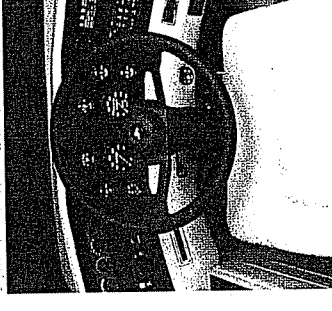
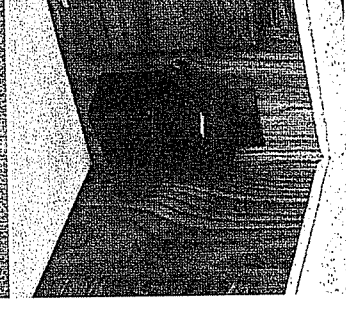
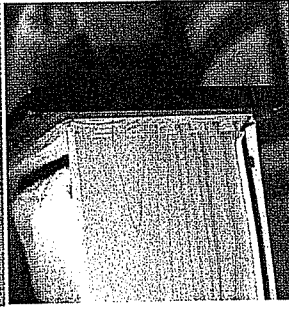
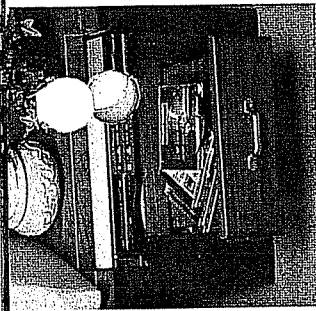
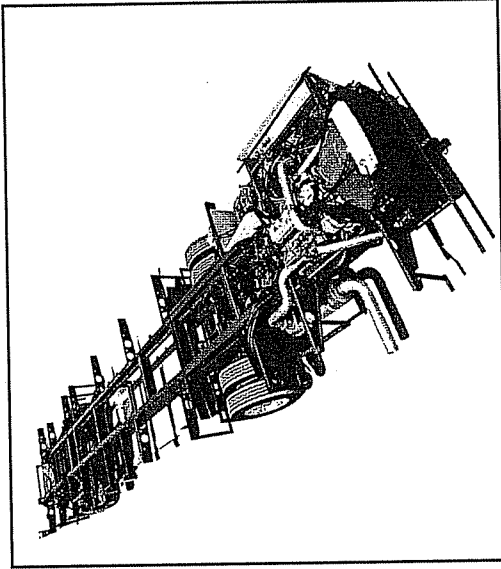


Relax in the tranquility of a Hurricane™ hydronic heating and water system that provides radiant warmth and an unlimited amount of hot water.

Maintain the exterior of your Patriot with the on board pressure washer system. Simply plug in a hose and spray away dirt. This system even comes with a handy storage bag made of awning material that can be conveniently stored in the cavernous pass through cargo bay.

Whether tackling the hills of Pike's Peak or cruising down the California Coast, the Patriot puts you in command. Built on the patented Magnum® Eight Air Bag chassis and equipped with the Caterpillar® 3126B 330 HP Electronic Diesel Engine, this coach will maneuver any terrain with comfort and ease.

Or for those of you who demand greater power, upgrade to the mighty Patriot Thunder. The Thunder is built on the Magnum "Big Cat C-12" chassis and is equipped with the Caterpillar® 425HP engine that packs 1,550 lb.ft. of torque.



# Patriot 2000 Specifications and Features

## Bath Features

Tile Floor  
Fountainhead™ Countertops  
Porcelain Sink  
Fantastic Fan™ w/ Remote Switch  
Insulated Skylight  
Shower w/ Glass Enclosure

## Bedroom Features

Night Stands  
20" Sony® Remote Control Color TV  
Queen Size Walk Around Bed  
Day and Night Mini-Pleated Shades  
Flush Mount Telephone Jack  
Ducted Roof Air w/ Wall Thermostat

## Kitchen Features

Sharp® Microwave/Convection Oven  
Gaggenau® Recessed Two Burner  
Cooktop w/ Cover  
Dometic® 8 cu. ft. Refrigerator with  
Ice Maker  
Fountainhead™ Countertops & Sink  
Fantastic Fan™ w/ Remote Switch

## Entertainment Features

20" Sony® Remote Control Color  
Television in Living Area  
Bose® Surround Sound Home Theater,  
Stereo, Dash & Wave™ Radio System  
Sony® Stereo VCR  
Amplified TV Antenna  
Pre-wired for Digital Satellite System

## Driving Comforts

UltraLeather™ 6-Way Power Cab Seats  
Custom Dash Panel  
Tilt & Telescoping Steering Wheel  
Electronic Throttle & Cruise Control  
Heated Remote-Control Side Mirrors  
Color Rear View Monitor System  
VMS 200EL™ Electronic Engine Monitor

## Luxury Features

Sculpted Carpet  
Designer Soft Wall Interiors  
Solid Hardwood Cabinetry  
110V Residential Lighting  
Large Dual Pane Residential Windows  
Full Slide Out (N/A Trenton)

## Chassis & Mechanical

Magnum® Eight Air Bag Suspension  
Bilstein Shock Absorbers  
RVA® 3-Point Hydraulic Leveling System  
Bendix Hydromax™  
Bosch Four Wheel Disc Brakes w/ABS  
Heavy Duty Transmission Cooler  
TRW Ross Steering  
275/70R22.5 Radial Tires  
Chassis Service Center w/Diagnostic Plug  
PacBrake™ Engine Retarder  
Dual Fuel Fills

## Exterior Features

Insulated Aluminum Bay Doors  
Electric Bay Door Locks  
Girard® Automatic Armless Awning  
w/ wind sensor  
Window Awnings  
Dual Air Horns  
Manifold Water Control System  
Trailer Hitch

Painted Graphics w/ Clear Coat Finish  
Spacious Pass Through Cargo Bays  
Retractable Video Cable Hook-up  
Coach Pressure Washer System  
Driver's Side Exterior Security Light

## Independence Package

Upgrade to Driver's Lumbar Support Seat  
Upgrade to UltraLeather™ Recliner  
Upgrade to Power Passenger Foot Rest  
Add Full Width Rear Mud Flap  
Add Basement Rollout Tray

## Thunder Package (40' models only)

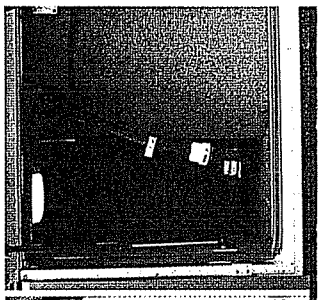
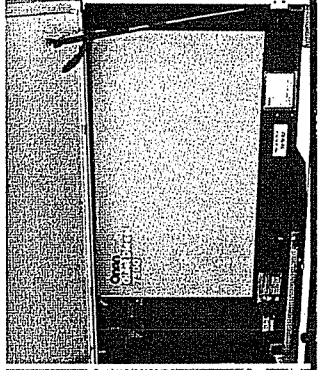
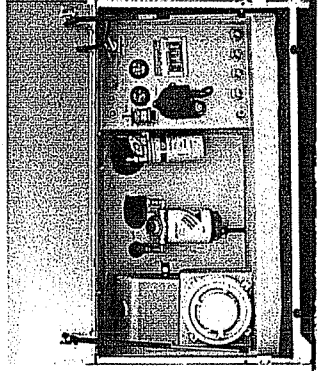
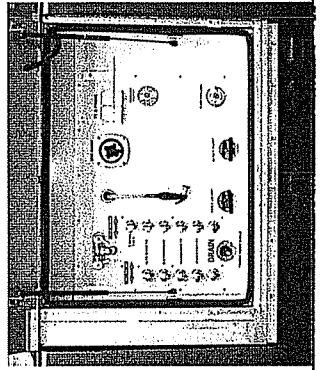
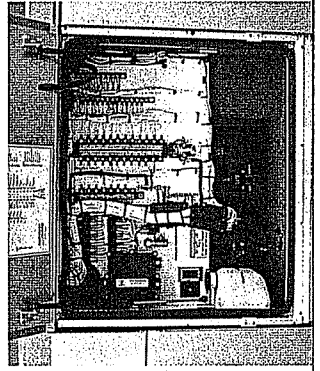
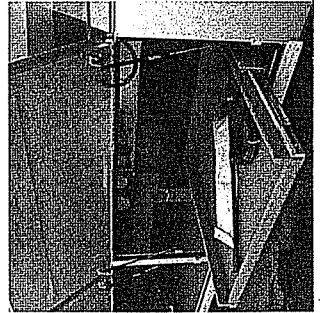
Magnum® C-Series Chassis with  
Caterpillar® C-12 Engine 425HP  
Allison® HD 4060 World Transmission  
Onan® 7.5 kW Quiet Diesel Generator  
Datron® 3000 Digital Satellite System  
Special Paint - 2 Color Choices  
Interior and Exterior Upgrades

## Power Systems

100 Watt Solar Panel w/ Regulator  
2000W Inverter / Charger w/ Monitor  
Echo™ Battery Charger for Chassis  
Two Group 31 Chassis Batteries and  
Four 6 Volt Coach Batteries on Roll Out  
50 amp Shore Cord on Power Reel  
Battery Enclosure

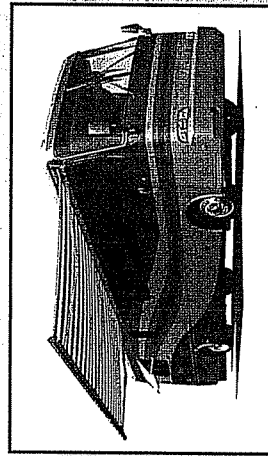
## Upgrades and Exchanges

Upgrade to Onan® 7.5 kW Quiet Diesel  
Generator  
Add Washer/Dryer Combination  
Upgrade to Power Privacy Cab Drapes  
Add Datron® 3000 Digital Satellite  
System  
Upgrade to 12 cu ft. Norcold®  
Four Door Refrigerator w/Ice Maker  
Upgrade to Dometic® 10 cu.ft. Double  
Door Refrigerator w/Ice Maker  
Upgrade to Remote Controlled  
Automatic Awnings  
Exchange to Passenger Side  
UltraLeather™ Loveseat  
Upgrade to UltraLeather™ Sofa  
Exchange to Passenger Side  
UltraLeather™ L- Lounge  
Exchange to Enclosed Garden Tub  
Exchange to RV King Bed (N/A Bedroom  
slide-out or 33' Concord)  
Add Rear Mural  
Bedroom Slide Out (Brandywine,  
Monticello)

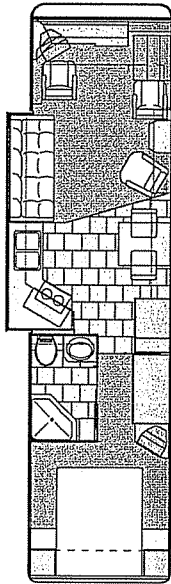


### *Girard Automatic Awning with Wind Sensor*

Girard's Armless Automatic Awning makes outdoor leisure a treat, and there are no troublesome arms to deal with. This compact unit hides virtually unnoticed in the exterior wall of the coach for streamlined traveling convenience. It deploys with the push of a button to beat back the sun's heat. This awning is so advanced it has a brain! When the wind starts to blow the awning knows it's time to come in. Finally - you really do have it "made in the shade".

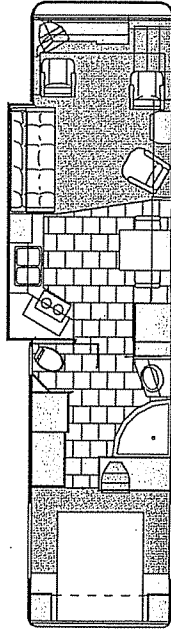


## *2000 Patriot Floor Plans*



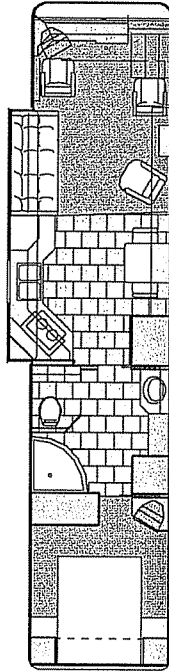
**33' Concord with Full Slide Out**

*Front Entry Only*



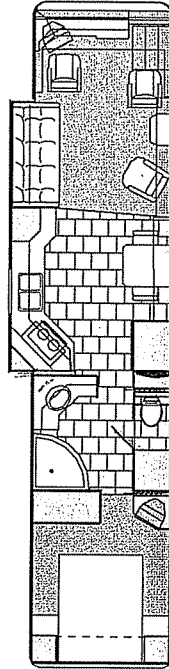
**37' Ticonderoga with Full Slide Out**

*Front or Side Entry*



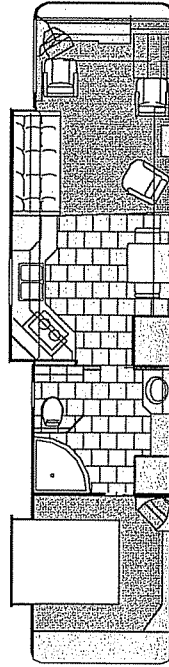
**40' Brandywine with Full Slide Out**

*Front or Side Entry - Available with Thunder Package*



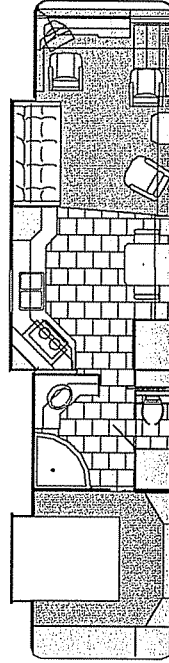
**40' Monticello with Full Slide Out**

*Front or Side Entry - Available with Thunder Package*



**40' Brandywine with Double Slide Out**

*Front or Side Entry - Available with Thunder Package*



**40' Monticello with Double Slide Out**

*Front or Side Entry - Available with Thunder Package*

All specifications are subject to change without notice or obligation.

Natural variations in shade, grain and pattern are a characteristic of real hardwood and serve to enhance the beauty of the cabinetry.

## **BEAVER MOTOR COACHES, INC.**

Mailing Address: P. O. Box 5639 · Bend, OR 97708

Street Address: 20545 Murray Road · Bend, OR 97701

Toll Free 1-800-423-2837 · [www.beavermotorcoaches.com](http://www.beavermotorcoaches.com)

2221799

An **SMC** Corporation



# Product Specifications

# Patriot 2000

<b>Chassis</b>	Magnum® B30A330 "Magnum Air"		
<b>Engine</b>	Caterpillar® 3126B Turbocharged Computerized Electronic Diesel Engine		
<b>orsepower and Torque</b>	330HP @ 2,400 rpm      860 lb.-ft. @ 1,440 rpm		
<b>Transmission</b>	Allison® MD3060 6-Speed World Transmission with 2 Overdrives		
<b>GVWR</b>	31,000 lbs.		
<b>GCWR</b>	36,000 lbs.		
<b>Axles</b>	Front - Westport® 12,000 lbs.      Rear - Rockwell® 19,000 lbs.		
<b>Height</b>	Exterior 11' 11"      Interior 6' 7 ¼"		
<b>Wheelbase</b>	195"	231"	266 ¼"
<b>Floorplans</b>	Concord	Trenton, Ticonderoga	Princeton, Monticello, Brandywine
<b>Exterior Lengths</b>	34' 7 ½"	37' 9"	40' 7 ½"
<b>Fresh Water</b>	100 Gallons		
<b>Holding Tanks</b>	50 Gallons Black, 50 Gallons Gray		
<b>LP Gas</b>	35 Gallons		
<b>Fuel</b>	112 Gallons		
<b>Generator</b>	Onan® Marquis 6.5 kW LP		
<b>Furnace &amp; Water Heater</b>	Hurricane™ Hydronic Heat w/ Continuous Hot Water		
<b>Air Conditioners</b>	Dual Ducted Dometic® 13,500 BTU		

## Bath Features

Tile Floor  
Fountainhead™ Countertops  
Porcelain Sink  
Fantastic Fan™ w/ Remote Switch  
Insulated Skylight  
Shower w/ Glass Enclosure

## Bedroom Features

Night Stands  
™ Sony® R/C Color TV  
Queen Size Walk Around Bed  
Day and Night Mini-Pleated Shades  
Flush Mount Telephone Jack  
Ducted Roof Air w/ Wall Thermostat

## Kitchen Features

Sharp® Microwave/Convection Oven  
Gaggenau® Recessed Two Burner  
Cooktop w/ Cover  
Dometic® 8 cu. ft. Refrigerator w/Ice  
Maker  
Fountainhead™ Countertops & Sink  
Fantastic Fan™ w/ Remote Switch  
Tile Floor

## Entertainment Features

20" Sony® Remote Control Color  
Television in Living Area  
Bose® Surround Sound Home Theater,  
Stereo, Dash & Wave™ Radio System  
Sony® Stereo VCR  
Amplified TV Antenna  
Pre-wired for Digital Satellite System

## Driving Comforts

UltraLeather™ 6-Way Power Cab Seats  
Custom Dash Panel  
& Telescoping Steering Wheel  
Electronic Throttle & Cruise Control  
Heated Remote-Control Side Mirrors  
Color Rear View Monitor System  
VMS 200EL™ Electronic Engine Monitor

## Luxury Features

Sculpted Carpet  
Designer SoftWall Interiors  
Solid Hardwood Cabinetry  
110V Residential Lighting  
Large Dual Pane Residential Windows  
Full Slide Out (N/A Trenton)

## Chassis & Mechanical

Magnum® Eight Air Bag Suspension  
Bilstein Shock Absorbers  
RVA® 3-Point Hydraulic Leveling System  
Bendix Hydromax™  
Bosch Four Wheel Disc Brakes w/Bosch ABS  
Heavy Duty Transmission Cooler  
TRW Ross Steering  
275/70R22.5 Radial Tires  
Chassis Service Center w/Diagnostic Plug  
PacBrake® Engine Retarder  
Dual Fuel Fills

## Exterior Features

Insulated Aluminum Bay Doors  
Electric Bay Door Locks  
Girard® Automatic Armless Awning  
w/ wind sensor  
Window Awnings  
Dual Air Horns  
Manifold Water Control System  
Trailer Hitch  
Painted Graphics w/ Clear Coat Finish  
Spacious Pass Through Cargo Bays  
Retractable Video Cable Hook-up  
Coach Pressure Washer System  
Driver's Side Exterior Security Light

## Independence Package

Upgrade to Driver's Lumbar Support  
Seat  
Upgrade to UltraLeather™ Recliner  
Upgrade to Power Passenger Foot Rest  
Add Full Width Rear Mud Flap  
Add Basement Rollout Tray

## Thunder Package (40' models only)

Magnum® C-Series Chassis with  
Caterpillar® C-12 Engine 425HP  
Allison® HD 4060 World Transmission  
Onan® 7.5 kW Quiet Diesel Generator  
Datron® 3000 Digital Satellite System  
Special Paint - 2 Color Choices  
Interior and Exterior Upgrades

## Power Systems

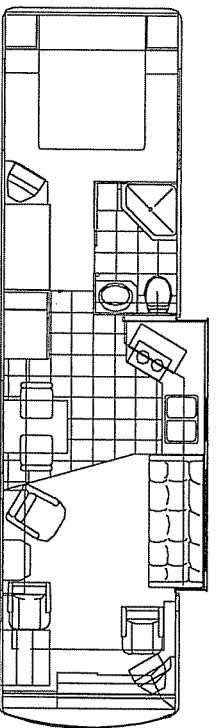
100 Watt Solar Panel w/ Regulator  
2000W Inverter / Charger w/ Monitor  
Echo® Battery Charger for Chassis  
Two Group 31 Chassis Batteries and  
Four 6 Volt Coach Batteries on Roll Out  
50 amp Shore Cord on Power Reel  
Battery Enclosure

## Upgrades and Exchanges

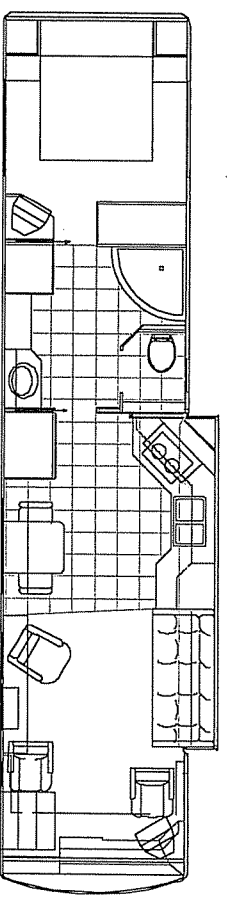
Upgrade to Onan® 7.5 kW Quiet Diesel  
Generator  
Add Washer/Dryer Combination  
Upgrade to Power Privacy Cab Drapes  
Add Datron® 3000 Digital Satellite  
System  
Upgrade to 12 cu ft. Norcold®  
Refrigerator w/Ice Maker  
Upgrade to Dometic® 10 cu.ft. Double  
Door Refrigerator w/Ice Maker  
Upgrade to Remote Controlled Automatic  
Awning  
Exchange to Passenger Side  
UltraLeather™ Loveseat  
Upgrade to UltraLeather™ Sofa  
Exchange to Passenger Side  
UltraLeather™ L-Lounge  
Exchange to Enclosed Garden Tub  
Exchange to RV King Bed  
Add Rear Mural  
Bedroom Slide Out  
(Brandywine, Monticello or Princeton Only)

Specifications Effective September 1, 1999  
All specifications and prices are subject to change  
without notice or obligation

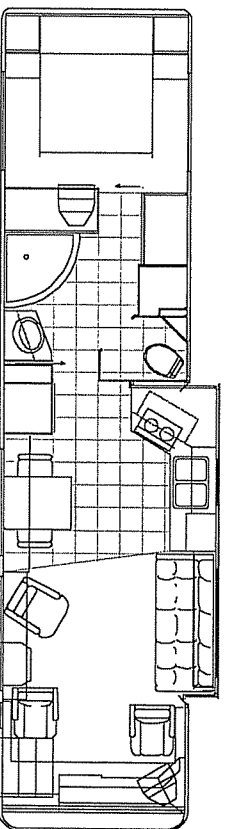
# 2000 Patriot by Beaver Motor Coaches Floor Plans



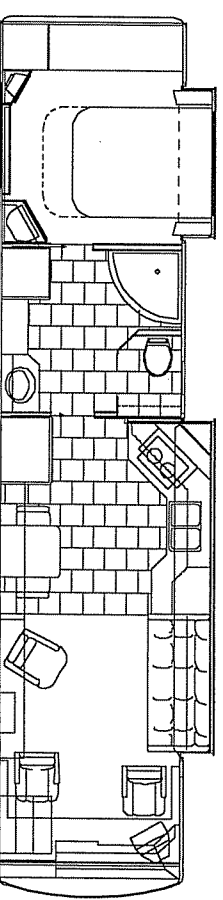
**33' Concord, Full Slide Out**



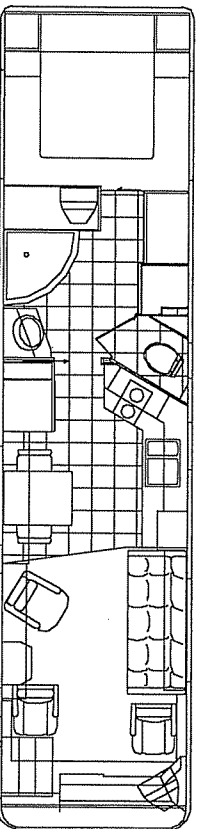
**40' Brandywine, Full Slide Out, Front or Side Entry**



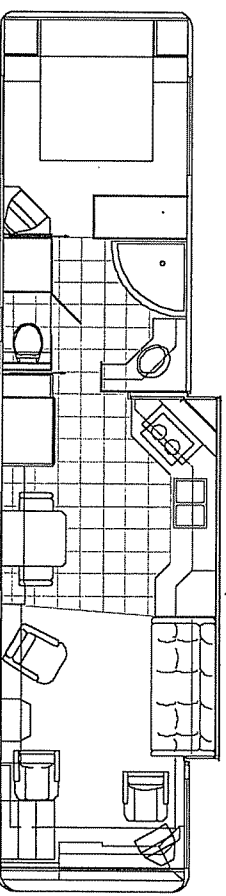
**37' Ticonderoga, Full Slide Out, Front or Side Entry**



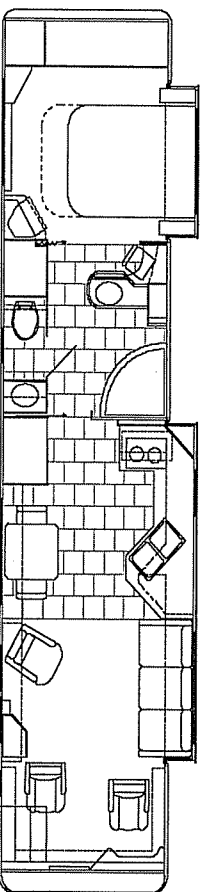
**40' Brandywine, Full Slide Out & Optional Bedroom Slide Out**



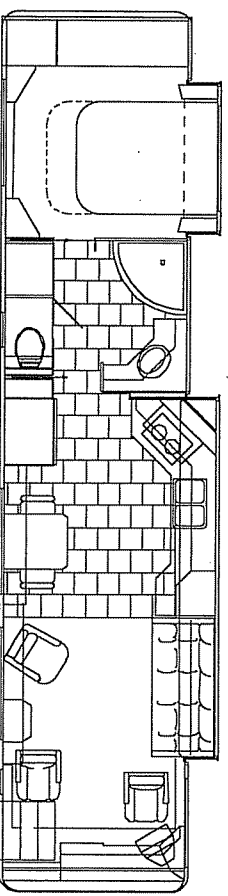
**37' Trenton, Front or Side Entry**



**40' Monticello, Full Slide Out, Front or Side Entry**



**40' Princeton, Full Slide Out & Bedroom Slide Out**



**40' Monticello, Full Slide Out & Optional Bedroom Slide Out**



# PRODUCT SPECIFICATIONS

# PATRIOT 425 THUNDER 2000

<b>Chassis</b>	Magnum® Air "Big Cat"	
<b>Engine</b>	Caterpillar® C-12 Turbocharged Computerized Electronic Diesel Engine	
<b>Horsepower and Torque</b>	425 HP @ 1,800 rpm	1,550 lb.-ft. @ 1,200 rpm
<b>Transmission</b>	Allison® HD4060 6-Speed World Transmission with 2 Overdrives	
<b>GVWR</b>	32,700 lbs.	
<b>GCWR</b>	37,700 lbs.	
<b>Axles</b>	Front - Westport® 13,200 lbs.	Rear - Rockwell® 19,500 lbs.
<b>Height</b>	Exterior 11' 11"	Interior 6' 7 1/2"
<b>Wheelbase</b>	272"	
<b>Floorplans</b>	Princeton, Monticello, Brandywine	
<b>Exterior Length</b>	40' 7 1/2"	
<b>Fresh Water</b>	100 Gallons	
<b>Holding Tanks</b>	50 Gallons Black, 50 Gallons Gray	
<b>LP Gas</b>	35 Gallons	
<b>Fuel</b>	112 Gallons	
<b>Generator</b>	Onan® 7.5 kW Quiet Diesel Generator	
<b>Furnace and Water Heater</b>	Hurricane® Hydronic Radiant Heat w/ Continuous Hot Water	
<b>Air Conditioners</b>	Dual Ducted Dometic® 13,500 BTU	

## Bath Features

Tile Floor  
Fountainhead™ Countertops  
Porcelain Sink  
Fantastic Fan™ w/ Remote Switch  
Insulated Skylight  
Circular Shower w/ Glass Enclosure  
Coordinating Embroidered Towels

## Bedroom Features

Light Stands  
Sony® R/C Color TV  
Queen Size Walk Around Bed  
Day and Night Mini-Pleated Shades  
Flush Mount Telephone Jack  
Ducted Roof Air w/ Wall Thermostat

## Kitchen Features

Sharp Microwave/Convection Oven  
Gaggenau Recessed Two Burner  
Cooktop w/ Cover  
Dometic® 8 cu. ft. Refrigerator w/Ice Maker  
Fountainhead™ Countertops & Sink  
Fantastic Fan™ w/ Remote Switch  
Tile Floor

## Entertainment Features

20" Sony® Remote Control Color  
Television in Living Area  
Bose® Surround Sound Home Theater,  
Stereo, Dash & Wave Radio System  
Sony® Stereo VCR  
Amplified TV Antenna  
Datron® 3000 Digital Satellite System

## Power Systems

100 Watt Solar Panel w/ Regulator  
2000W Inverter / Charger w/ Monitor  
Dometic® Battery Charger for Chassis  
Two Group 31 Chassis Batteries and Four  
6 Volt Coach Batteries on Roll Out  
50 amp Shore Cord w/Power Retract

## Luxury Features

Embroidered UltraLeather™ Sofa  
UltraLeather Recliner  
Sculpted Carpet  
Designer SoftWall Interiors  
Power Privacy Cab Drape  
Solid Hardwood Cabinetry  
110V Residential Lighting  
Large Dual Pane Residential Windows  
Full Galley Slide Out

## Driving Comforts

Embroidered UltraLeather™ 6-Way Power  
Cab Seats  
Driver's Seat w/Lumbar Support  
Power Passenger Foot Rest  
Custom Dash Panel  
Tilt & Telescoping Steering Wheel  
Electronic Throttle & Cruise Control  
Heated R/C Chrome Side Mirrors  
Color Rear View Monitor System  
VMS 200EL™ Electronic Engine Monitor

## Chassis & Mechanical

Magnum® Eight Air Bag Suspension  
Bilstein Shock Absorbers  
RVA® 3-Point Hydraulic Leveling System  
Bendix Hydromax™  
Bosch Four Wheel Disc Brakes w/Bosch ABS  
Heavy Duty Transmission Cooler  
TRW Ross® Power Steering  
275/70R22.5 Radial Tires  
Chassis Service Center w/Diagnostic Plug  
Jacob's® Two Stage Engine Retarder  
Dual Fuel Fills

## Exterior Features

Full Width Mud Flap w/Logos  
Stainless Steel Rocker Trim  
Insulated Aluminum Bay Doors  
Girard Automatic Patio Awning w/ wind  
sensor  
Window Awnings

## Dual Air Horns

Etched Lighted Assist Entry Handle  
Manifold Water Control System  
Trailer Hitch  
Painted Graphics w/ Clear Coat Finish  
Spacious Pass Through Cargo Bays  
Retractable Video Cable Hook-up  
Coach Pressure Wash System  
Driver's Side Security Light  
Battery Enclosure  
Basement Roll Out Tray

## Upgrades and Exchanges

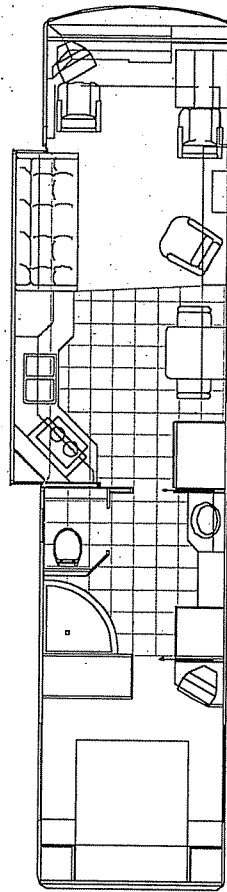
Add Washer/Dryer Combination  
Upgrade to 12 cu ft. Norcold® 4 Door  
Refrigerator w/Ice Maker  
Upgrade to Dometic® 10 cu.ft. Double  
Door Refrigerator w/Ice Maker  
Upgrade to Remote Controlled Automatic  
Awning  
Exchange to Passenger Side UltraLeather™  
Loveseat  
Exchange to Passenger Side UltraLeather™  
L-Lounge  
Exchange to Enclosed Garden Tub  
Exchange to RV King Bed  
Bedroom Slide Out

Specifications Effective September 1, 1999  
All specifications and prices are subject to  
change without notice or obligation

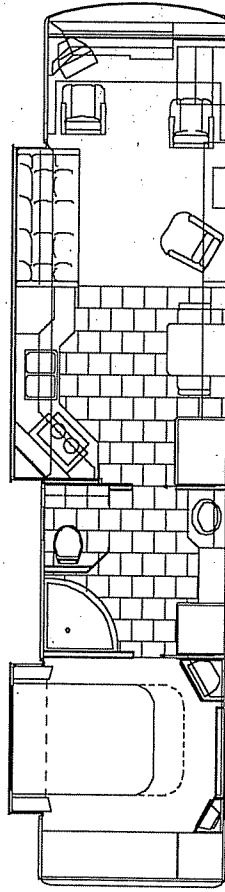


# 2000 PATRIOT 425 THUNDER

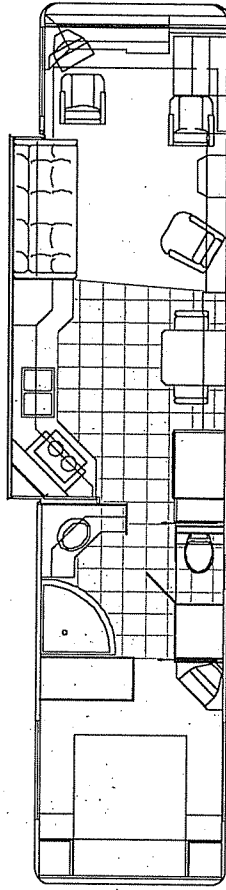
## BY BEAVER MOTOR COACHES FLOOR PLANS



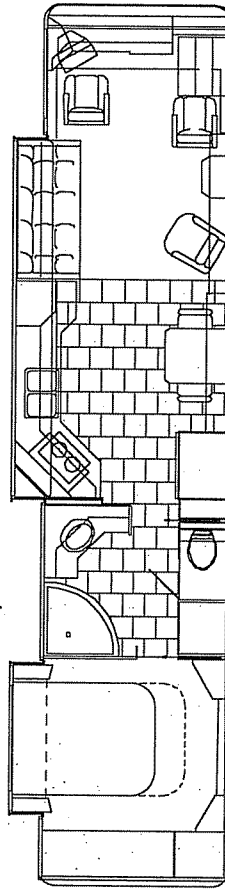
**40' Brandywine, Full Slide Out, Front or Side Entry**



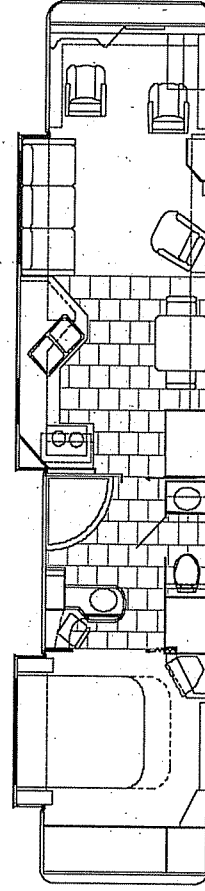
**40' Brandywine, Full Slide Out & Optional Bedroom Slide Out  
Front or Side Entry**



**40' Monticello, Full Slide Out, Front or Side Entry**



**40' Monticello, Full Slide Out & Optional Bedroom Slide Out  
Front or Side Entry**



**40' Princeton, Full Slide Out & Bedroom Slide Out  
Front or Side Entry**

