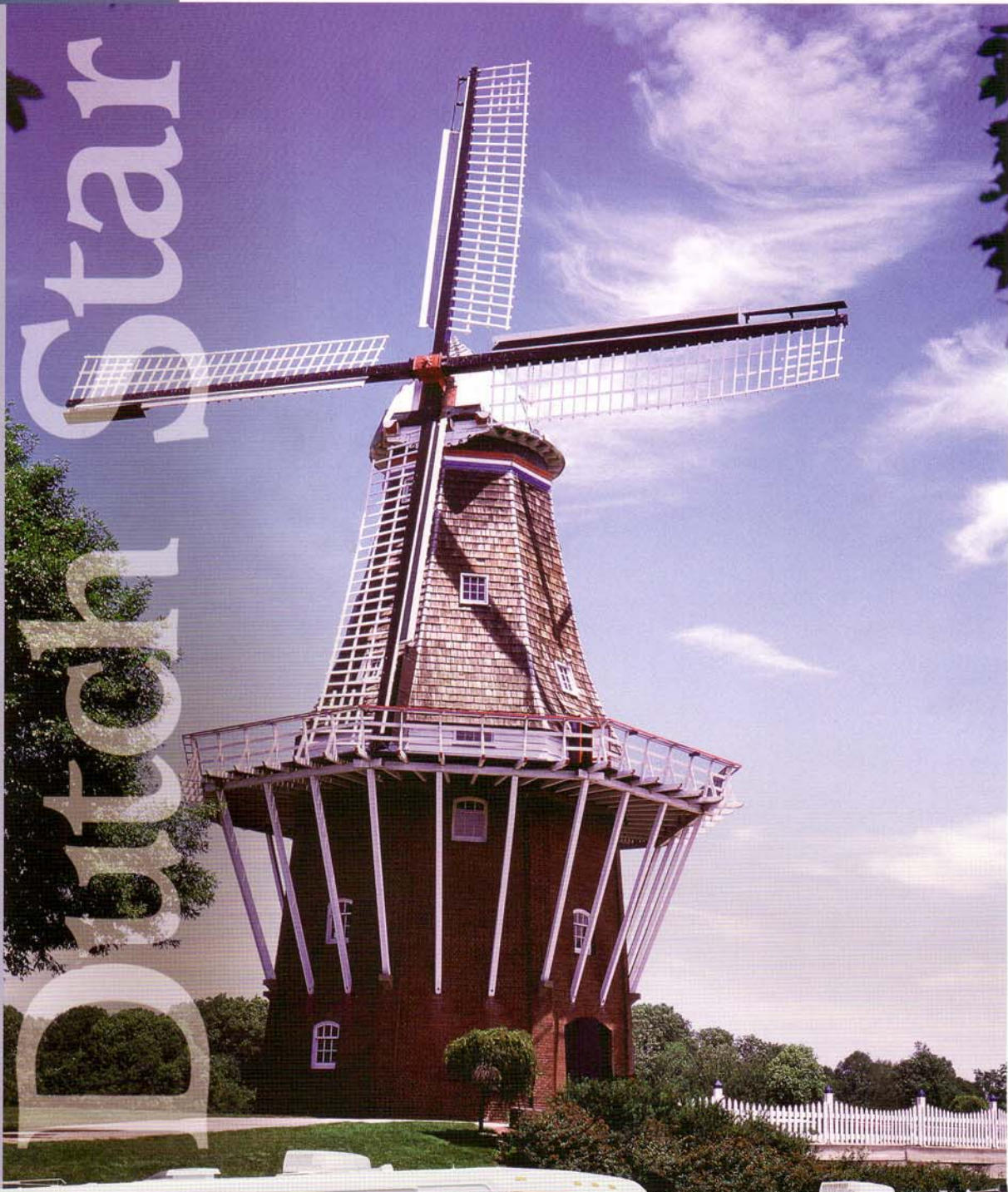


2000 DUTCH STAR BY NEWMAR



Dutch Star



CLASS A • DIESEL PUSHER



The name is Dutch Star® - the perfect place to be when you want Newmar® style, comfort and quality at an attractive price. The Dutch Star Class A was conceived, designed, built and delivered with Newmar's unyielding passion to build the very best. And, Dutch Star for 2000 is just that - the best! There are two all new exterior graphic packages in Silver Green and Antique Bronze to choose from, plus three interior color schemes - Pike Green, Driftwood and Desert Bloom, that blend beautifully with your choice of Light Oak or Snow Maple (optional) woodgrains.

No matter what model or color Dutch Star you decide on, we know that you will be another satisfied Newmar customer who made his choice - the best!



A M O T O R H O M E B Y N E W M A R

1) A warm, cozy built-in dinette and coordinating sofa and window treatments offer plenty of room and real comfort in our flat-floor slideout.

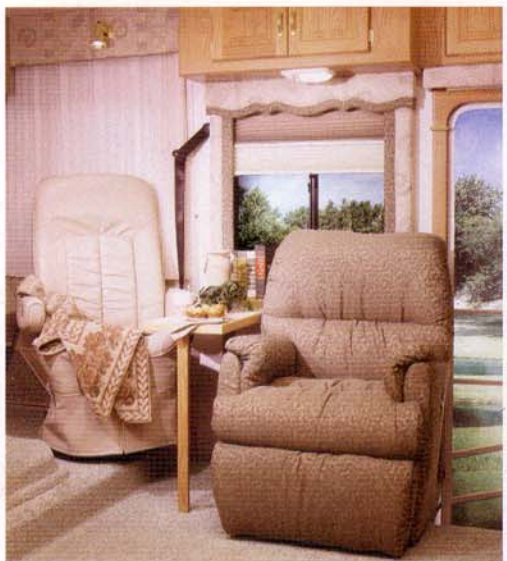
2) A premium cast acrylic sink, Corian® countertops and Newmar cabinetry in Light Oak make the kitchen in the Dutch Star® a real favorite.



2)

3) You'll feel right at home as you relax in the comfort of this plush recliner.

4) Big cabinets frame the beautifully etched mirrors and walk-around queen size bed.



3)



4)



6)



8)

8 & 9) An AM/FM stereo with CD player has been built into the well-designed, ergonomic dash with plush driver and passenger seats and other neatly planned amenities including a barrel chair and overhead cabinets.

5) Richly designed day/night pleated window shades and lambrequins adorn the decor throughout and are standard equipment on the Dutch Star Class A. The beautiful Corian® countertops feature a color coordinated edge and include an acrylic sink as standard equipment.

6) The lovely quilted bedspread with reverse sham set an elegant tone in the slideout master bedroom.

7) Our handcrafted cabinets feature Light Oak raised panel doors. The bed top includes built-in lifts for easy access to the lower storage area.



7)



9)

2000

D U T C H S T A R

Dutch Star



C O N S T R U C T I O N

We love an educated consumer. The more you know about recreational vehicles, the more you'll appreciate ours. Some manufacturers might call our recreational vehicles "over built" - but, that's a compliment to us. We make no apologies for building the finest recreational vehicles in the world.

Although Newmar® recreational vehicles are created and assembled in one of the largest and most advanced facilities, it's talented people that build our products. We are located in the heart of Amish Country in Nappanee, Indiana. Our employees blend old world craftsmanship with new technological advances that set our products



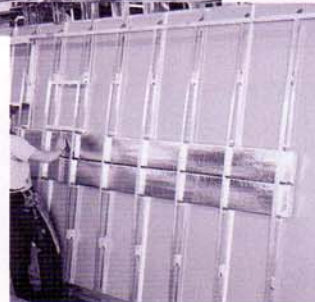
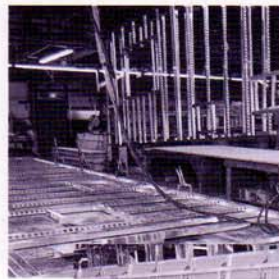
apart. And, because our products are built better, every Dutch Star carries our famous 3-Year, Bumper-to-Bumper Warranty.

It's a simple process for you to verify the quality of our products. The first step is to visit your Dutch Star® Dealer and examine one of our fine products for yourself. Then ask a Newmar owner and learn first hand from someone who has experienced Newmar quality.

Dutch Star Diesel Pusher and Class A motorhomes are built strong. Our aluminum sidewalls and roof are built 16" on-center, and 5/8" foam insulation is laminated into the sidewalls and ceiling along with an additional R7 in the sidewalls, floor and

roof of the Class A. The Diesel Pusher has an R value of R11 in the roof and R7 in the sidewalls and floor.

Now you're ready for the final, and most enjoyable step, choosing a Dutch Star model that suits you. We challenge you to compare the quality of our Dutch Star models to any other, because we're sure you'll agree - there is none better than the best - Dutch Star from Newmar.





Newmar® challenges the notion that you have to be at home to feel at home with the Dutch Star Diesel Pusher. For 2000, the Dutch Star is a statement of supreme confidence and taste blended expertly into the place you call home. We offer three interior color schemes - Rainforest, Blue Mist and Pale Amber, that coordinate perfectly with your choice of Light Oak as our standard woodgrain or Frosted Maple and Washington Cherry as tasteful options. Two new exterior graphic packages offer contemporary style in either Sahara Green or Slate Blue.

Spend some quality time selecting which Dutch Star speaks most eloquently for you - then call it home!



1)

6)

E L P U S H E R B Y N E W M A R



2)

1) Whether dining or relaxing, you will do it in style and comfort in this popular Dutch Star model.

2) The fully appointed Dutch Star kitchen has all the comforts of home and, for 2000, includes a premium cast acrylic sink.



4)

3) Rich (optional) cabinetry plus matching window treatments and bedspread add elegance to this Dutch Star master bedroom.

4) The driver's seat in the Dutch Star Diesel Pusher is a 6-way power model. The dash includes a radio with CD player.

5) An optional leather/vinyl L-lounge adds ambience and comfort fit for a king.



3)



5)

6) Located on the curb side, the optional leather/vinyl L-lounge is a luxurious complement to the beautiful living area. The dinette features a hidden leaf table, two elegant chairs plus two folding chairs, adding a finishing touch to the beautiful decor of the living/dining area.



7)

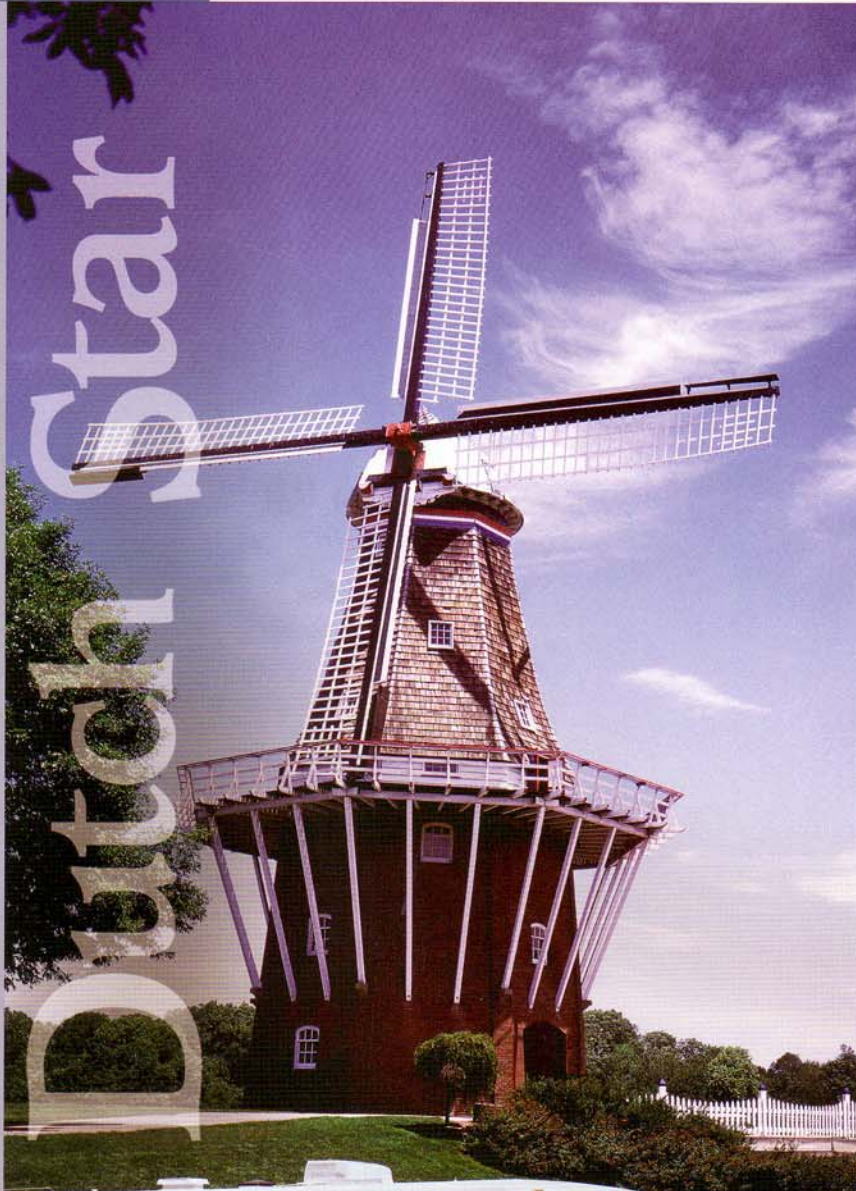
7) The beauty of the master bedroom is shown in the handsome cabinetry and color-coordinated decor. Access to the lower storage area is made simple by using the lifts located under the bed.

8) Ceramic tile floors, rich cherry cabinetry and beautifully designed amenities help make this Dutch Star kitchen a popular choice.



8)

2000 DUTCH STAR BY NEWMAR



Compliments of:

For more than three decades, Newmar® has been building America's most popular recreational vehicles. Right from the start - customers like you recognized that a Newmar recreational vehicle was something special. In a world of cookie-cutter RVs, a Newmar product has always stood out for its innovative features, outstanding performance and unparalleled quality. And, while we're proud of our tradition of excellence, we won't rest on our laurels. We're constantly refining our recreational vehicles to make them even better. We believe the models featured in this catalog are the finest we've ever built. And, we back them with a bumper-to-bumper, three year warranty.

Thanks for taking the time to look over our products. We sincerely hope you will become one of our many satisfied customers who have learned that Newmar truly is An American Tradition of Excellence.


Mahlon Miller
Chairman of the Board

We invite you to visit our state of the art production facility in Nappanee, Indiana.

Plant tours are offered at
10:00 a.m. and 1:00 p.m.,
Monday through Friday.

NewmarKountryKlub

Don't forget to check out the Klub—the Newmar Kountry Klub, that is. All you need for eligibility is to be a proud owner of any of the fine Newmar recreational vehicles.



An American Tradition Of Excellence

355 N DELAWARE ST • PO BOX 30
NAPPANEE IN 46550-0030
PHONE 219 773-7791 • FAX 219 773-2895
<http://www.newmarcorp.com>

2000 DUTCH STAR BY NEWMAR

Dutch Star



CLASS A • DIESEL PUSHER

DUTCH STAR® CLASS A STANDARD FEATURES

Motorized Chassis Features

- Standard Chassis - Ford F-53 Chassis w/V-10 Engine
- Cruise Control
- Spare Tire
- Tilt Steering Wheel

Air Conditioning & Heating

- 15M Brisk Central Air Conditioner
- Dash Heater/Air Conditioner High Output
- LP Leak Detector

Appliances & Accessories

- 6 Gal. Gas Water Heater w/Direct Spark Ignition
- 22" Microwave (not available on 3364, 3365, 3465, 3665)
- 30" Microwave (standard on 3364, 3365, 3465, 3665)
- 19" Color TV (in dash overhead)
- 3-Burner Recessed Range w/Glass Oven Door (piezo ignition)
- AM/FM Stereo w/CD Player (in dash)
- Bi-fold Range Cover Laminated w/Matching Countertop Material
- Cable TV Connection w/RG6 Coaxial
- Dometic 3862 Refrigerator (8 cu ft)
- Hardwood Raised Panel Refrigerator Front
- Range Hood w/Light & Fan (not available on 3364, 3365, 3465, 3665)
- Rear View Monitor Prep
- Satellite Prep - Phone/TV Jack & Recept
- Telephone Connection w/1 Phone Jack
- TV Antenna w/Power Booster & 2 Jacks

Cabinets & Furniture

- Flexsteel Hide-A-Bed Sofa (68") (standard on 3256, 3451, 3455)
- Flexsteel Magic Bed Sofa (74")
- Flexsteel Jackknife Sofa (standard on 3401)
- Corian Countertop In Kitchen w/Color Coordinated Edge & Acrylic Sink
- Drawers w/Metal Guides
- Flexsteel Swivel Barrel Chair
- Hidden Leaf Dinette Table w/Two Fixed Chairs & Two Folding Chairs
- Laminate Countertop w/Color Coordinated Edge & Porcelain Lavatory In Bath
- Oak Raised Panel Cabinet Doors

Electrical Features

- 55 AMP Converter w/Charger
- 2 - 12 Volt Batteries On Pull-out Tray
- Battery Disconnect (for house battery)
- 4.8 Generac Generator w/One Remote Switch
- 5 Watt Solar Panel To Charge Chassis Battery
- Driving Lights
- Emergency Engine Start Switch
- Exterior Security Lights (one installed on each side)
- Lights In Exterior Storage Compartments

Exterior Features

- Convex Exterior Mirrors w/Remote Control & Defrost
- Gel-Coated Fiberglass Exterior Sides
- Hitch For Towing Car (w/2 extra 14 gauge wires for customer use) (class-2, 5000# rating)
- Roof Rack & Ladder
- Rubber Roof w/9MM Decking

Interior Features

- Vinyl Floor In Kitchen & Bath Area
- Day/Night Pleated Window Shades & Lambrequins
- Quilted Bedspread w/Reverse Sham (1)
- Woven Soft Touch Ceiling

Plumbing/Bath Features

- China Stool w/Spray Attachment
- Monitor Panel
- Sewage Holding Tank Rinse
- Water Heater Bypass System

Construction Features

- Aluminum Sidewalls & Roof Construction, 16" On Center

Windows, Awnings & Vents

- Automatic Entrance Door Step (double on Ford - single on Freightliner)
- Fantastic Vent w/Rain Sensor In Kitchen
- Power Vent In Bath Area w/Wall Switch
- Lighted Acrylic Assist Handle At Entrance Door
- Skylight In Bathroom (located above tub/shower)
- Stainless Steel Wheel Simulators

DUTCH STAR® CLASS A OPTIONAL FEATURES

Motorized Chassis Features

- Optional Chassis - Freightliner Diesel (210 HP) (not available on 2957)

Option Packages

- 2 - 13.5 Penguin Air Conditioners, 5.5 Generac Generator, 50 AMP Service w/Flex Cord (except Freightliner chassis)
- 2 - 13.5M Penguin Air Conditioners, 6.6 Generac Generator & 50 AMP Service/Flex Cord (not available on 2957)
- Touch Control Jacks, Rear View Monitor System, A&E Main Slideout Cover & 8500 Side Awning

Appliances & Accessories

- 22" Convection Microwave w/3-Burner Cooktop (not available on 3364, 3365, 3465, 3665)
- Ceiling Fan In Bedroom (not available on floorplans with a slideout)
- Icemaker Added To Dometic Refrigerator (where available)

Cabinets & Furniture

- 6-Way Power Driver's Seat
- Built-in Booth Dinette ilo Standard (not available on 2957)
- Flexsteel Front Seats - Leather/Vinyl w/6-Way Power
- Flexsteel Recliner ilo Standard
- Snow Maple Cabinets

Electrical Features

- 400 Watt Inverter (for dash TV)

Interior Features

- Simulated Plank Floor In Bath
- Simulated Plank Floor In Kitchen Area

Windows, Awnings & Vents

- Driver's Side Door w/Power Window (not available on 3364, 3365, 3465, 3665)

Dutch Star® Class A Ford Chassis

Model	Engine H.P.	Axle Ratio	Fuel Cap	Wheel Base	Front GAWR	Rear GAWR	GVWR	GCWR	Approx. UVW	Approx. NCC
DSCA2957	275	5.38	75	172	7000	13500	20500	26000	15530	4970
DSCA3256	275	5.38	75	200	7000	13500	20500	26000	15650	4850
DSCA3364	275	5.38	75	208	7000	13500	20500	26000	15550	4950
DSCA3365	275	5.38	75	208	7000	13500	20500	26000	16490	4010
DSCA3401	275	5.38	75	216	7000	13500	20500	26000	15340	5160
DSCA3451	275	5.38	75	216	7000	13500	20500	26000	16070	4430
DSCA3455	275	5.38	75	216	7000	13500	20500	26000	16090	4410
DSCA3465	275	5.38	75	216	7000	13500	20500	26000	15900	4600
DSCA3665	275	5.38	75	228	7000	13500	20500	26000	16900	3600

Lengths, Heights, Widths and Dry Weights are approximate. Weight will vary based on optional equipment added to the above base weight.

Dutch Star® Class A Freightliner Chassis

Model	Engine H.P.	Axle Ratio	Fuel Cap	Wheel Base	Front GAWR	Rear GAWR	GVWR	GCWR	Approx. UVW	Approx. NCC
DSCA2957	210	3.31	60	172	7000	13500	20500	25500	16030	4470
DSCA3256	210	3.31	90	200	7000	13500	20500	25500	16200	4300
DSCA3364	210	3.31	90	208	7000	13500	20500	25500	16390	4110
DSCA3365	210	3.31	90	208	7000	13500	20500	25500	16740	3760
DSCA3401	210	3.31	90	216	7000	13500	20500	25500	15940	4560
DSCA3451	210	3.31	90	208	7000	13500	20500	25500	16670	3830
DSCA3455	210	3.31	90	208	7000	13500	20500	25500	16690	3810
DSCA3465	210	3.31	90	216	7000	13500	20500	25500	16500	4000
DSCA3665	210	3.31	90	228	7000	13500	20500	25500	17500	3000

Lengths, Heights, Widths and Dry Weights are approximate. Weight will vary based on optional equipment added to the above base weight.

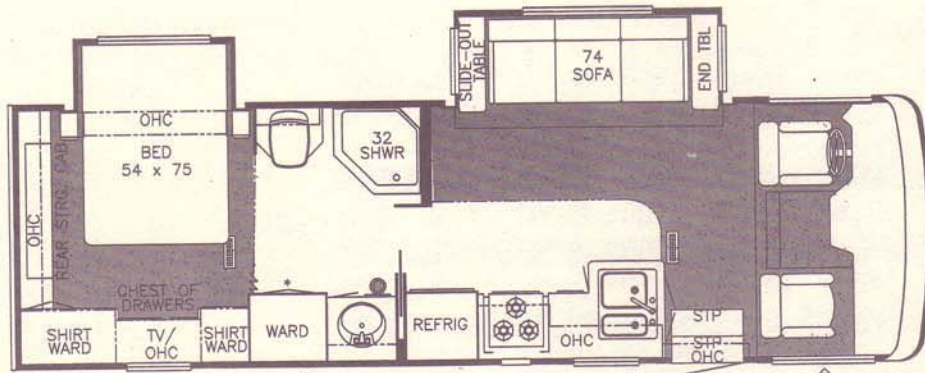
CLASS A OPTIONAL FLOORPLANS



K210
Dry bar ilo pantry -
DA 3455

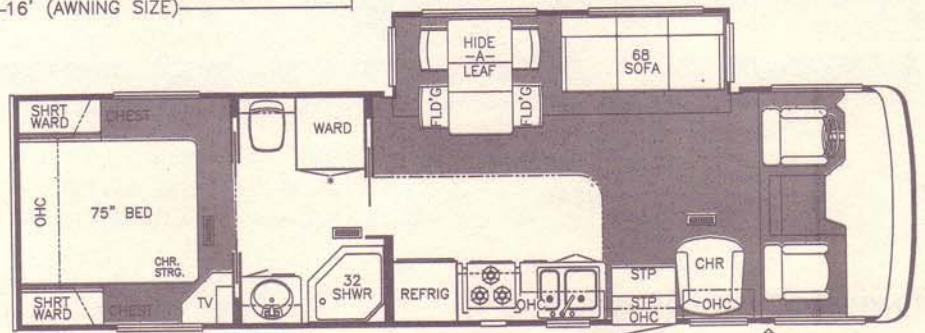


K090
75" Twin beds -
DA 3256, 3364,
3401, 3451, 3455, 3465



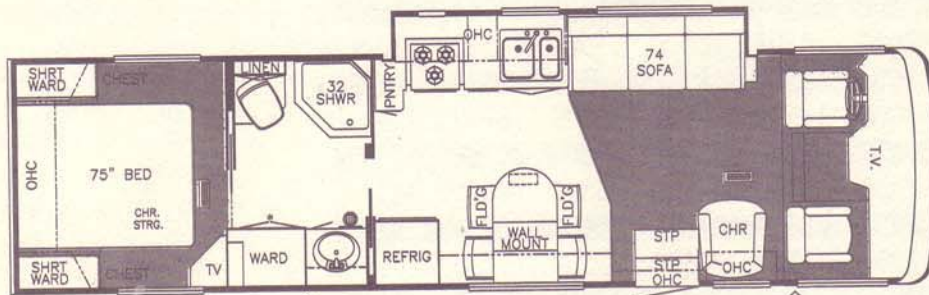
DS CA 2957

16' (AWNING SIZE)



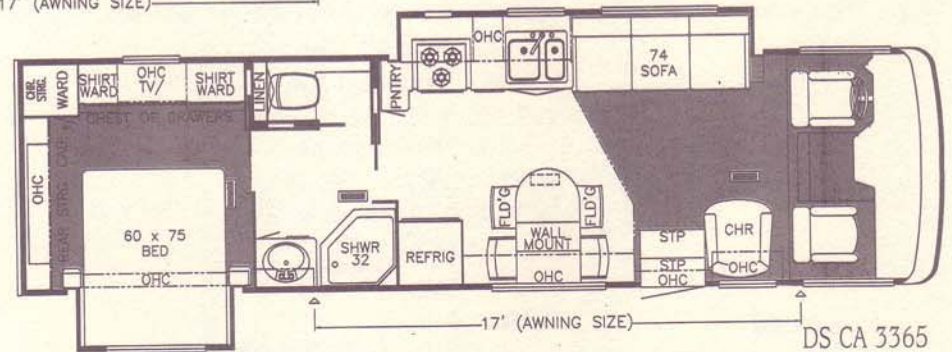
DS CA 3256

16' (AWNING SIZE)



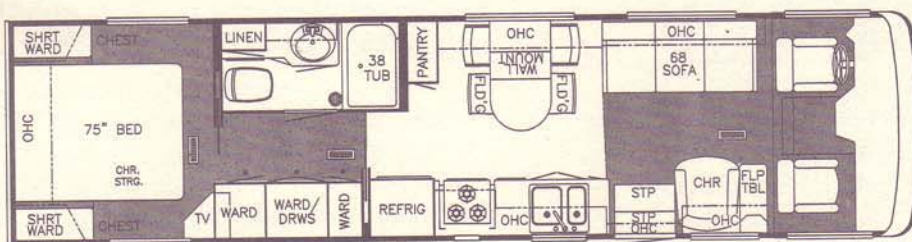
DS CA 3364

17' (AWNING SIZE)



DS CA 3365

17' (AWNING SIZE)

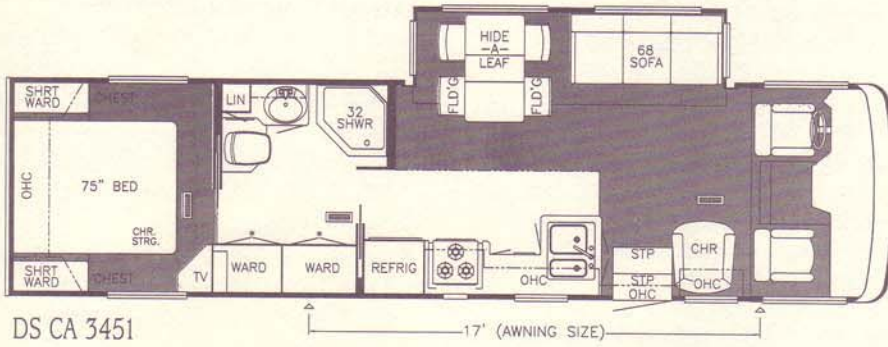


DS CA 3401

17' (AWNING SIZE)

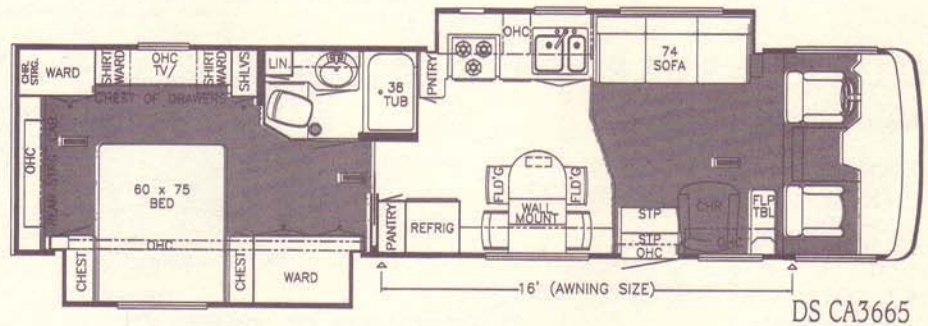
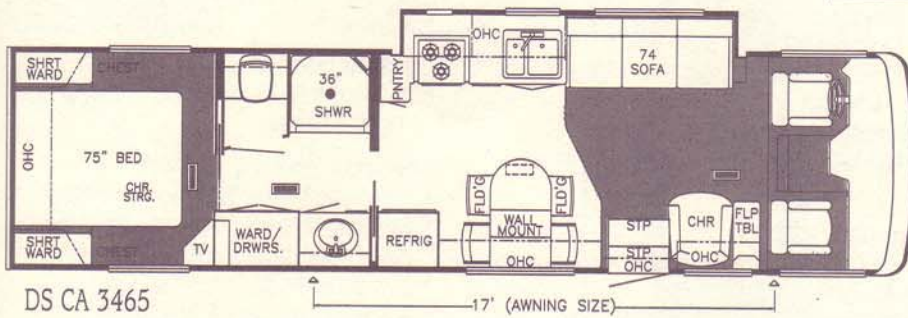
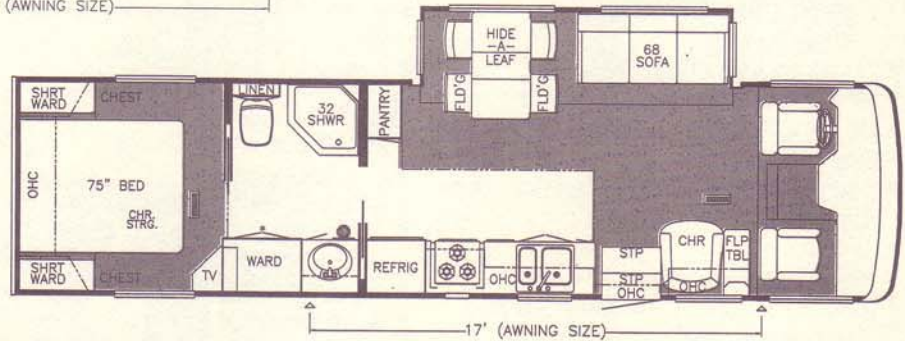
Prices, specifications, and floorplans are subject to change at Newmar's discretion without prior written notice or obligation. Some floorplans may show optional chairs or end tables. See dealer for availability.

S A S P E C I F I C A T I O N S



DUTCH STAR CLASS A
INSULATION "R" VALUES

Roof	Sidewalls	Floor
R-12	R-12	R-11



Dutch Star® Class A Sizes & Capacities

Model	Approx. Overall Length	Approx. Overall Width	Approx. Interior Overall Height	Interior Width	Interior Height	Grey Tank (Gal)	Sewage Tank (Gal)	Water Tank (Gal)	L/P Tank (Gal)	Furnace (btu)	Water Heater
DSCA2957	29' 11"	100"	11' 5"	94"	78"	40 gal	40 gal	45 gal	25	30000 btu	6 gal
DSCA3256	32' 11"	100"	11' 5"	94"	78"	40 gal	40 gal	45 gal	25	30000 btu	6 gal
DSCA3364	33' 11"	100"	11' 5"	94"	78"	40 gal	40 gal	45 gal	25	35000 btu	6 gal
DSCA3365	33' 11"	100"	11' 5"	94"	78"	40 gal	40 gal	45 gal	25	35000 btu	6 gal
DSCA3401	34' 11"	100"	11' 5"	94"	78"	40 gal	40 gal	45 gal	25	35000 btu	6 gal
DSCA3451	34' 11"	100"	11' 5"	94"	78"	40 gal	40 gal	45 gal	25	35000 btu	6 gal
DSCA3455	34' 11"	100"	11' 5"	94"	78"	40 gal	40 gal	45 gal	25	35000 btu	6 gal
DSCA3465	34' 11"	100"	11' 5"	94"	78"	40 gal	40 gal	45 gal	25	35000 btu	6 gal
DSCA3665	36' 11"	100"	11' 5"	94"	78"	40 gal	40 gal	45 gal	25	35000 btu	6 gal

Lengths, Heights, Widths, Dry Weights and Hitch Weights are approximate. Weight will vary based on optional equipment added to the above base weight.

DUTCH STAR® DIESEL PUSHER STANDARD FEATURES

Motorized Chassis Features

- Spartan Chassis (300 HP) Raised Rail w/Independent Front Suspension
- Cruise Control
- Tilt & Telescope Steering Wheel

Air Conditioning & Heating

- 13.5M Penguin Central Air Conditioner
- Dash Heater/Air Conditioner High Output
- LP Leak Detector

Appliances & Accessories

- 10 Gal. Gas/Electric Water Heater w/Direct Spark Ignition
- 22" Microwave (not available on 3565, 3865)
- 30" Microwave (standard on 3565, 3865)
- 19" Color TV (in dash overhead)
- Color TV In Bedroom
- 3-Burner Recessed Range w/Glass Oven Door (piezo ignition)
- Air Horns
- AM/FM Stereo w/CD Player (in dash)
- Bi-fold Range Cover Laminated w/Matching Countertop Material
- Cable TV Connection w/RG6 Coaxial
- Dometic 3862 Refrigerator (8 cu ft)
- Hardwood Raised Panel Refrigerator Front
- Range Hood w/Light & Fan (not available on 3565, 3865)
- Rear View Monitor System
- Telephone Connection w/1 Phone Jack
- TV Antenna w/Power Booster & 2 Jacks
- VCR 4-Head

Cabinets & Furniture

- Flexsteel Hide-A-Bed Sofa (68") (standard on 3862)
- Flexsteel Magic Bed Sofa (74" & 84")
- 6-Way Power Driver's Seat
- Corian Countertop Color Coordinated Edge & Integrated Porcelain Lavatory In Bath
- Corian Countertop In Kitchen w/Color Coordinated Edge & Acrylic Sink
- Drawers w/Metal Guides
- Flexsteel Recliner
- Hidden Leaf Dinette Table w/Two Fixed Chairs & Two Folding Chairs
- Oak Raised Panel Cabinet Doors

Electrical Features

- 75 AMP Converter w/Charger
- 2 - 6 Volt Batteries
- Battery Disconnect (for house battery)
- 6.6 Generac Generator w/LP Conversion & Automatic Changeover
- 5 Watt Solar Panel To Charge Chassis Battery
- 50 AMP Electrical Service w/Flexible Cord
- Driving Lights
- Emergency Engine Start Switch
- Exterior Security Lights (one installed on each side)
- Interior Courtesy Lights
- Lights In Exterior Storage Compartments

Exterior Features

- Convex Exterior Mirrors w/Remote Control & Defrost
- Gel-Coated Fiberglass Exterior Sides

Exterior Features (Cont.)

- Hitch For Towing Car (w/2 extra 14 gauge wires for customer use) (class-2, 5000# rating)
- Hydraulic Leveling Jacks w/"Touch" Manual Control
- Roof Rack & Ladder
- Rubber Roof w/9MM Decking

Interior Features

- Carpeting Stainmaster, 40 oz. 100% Nylon Plush Saxony w/Stainmaster Finish
- Day/Night Pleated Window Shades & Lambrequins
- Mini Blind Window Shades In Kitchen Area
- Padded Vinyl Ceiling
- Quilted Bedspread w/Reverse Sham & Accent Pillow

Plumbing/Bath Features

- China Stool w/Spray Attachment
- Exterior Shower (located on off door side)
- Fiberglass Tub/Shower w/Enclosure
- Monitor Panel
- Sewage Holding Tank Rinse
- Water Heater Bypass System

Construction Features

- Aluminum Sidewalls & Roof Construction, 16" On Center

Windows, Awnings & Vents

- Automatic Double Entrance Door Step
- Fantastic Vent w/Rain Sensor In Kitchen
- Power Vent In Bath Area w/Wall Switch
- Skylight In Bathroom w/Soft Shade
- Stainless Steel Wheel Simulators

DUTCH STAR® DIESEL PUSHER OPTIONAL FEATURES

Motorized Chassis Features

- Optional Chassis - Freightliner X-Line (300 HP) (not available on 3551, 3565)

Air Conditioning & Heating

- Extra 13.5M Penguin Air Conditioner
- 2 - 15M Brisk Heat Pump Air Conditioners ilo Standard

Appliances & Accessories

- 30" Convection Microwave w/3-Burner Cooktop
- Compact Washer/Dryer
- Sears Washer/Dryer
- Dometic 1062 Refrigerator (10 cu ft)
- U Line Icemaker (not available on 3565, 3865)
- Ceiling Fan In Bedroom (not available on floorplans with slideout)
- CD Player - 10 Disc Changer w/Surround Sound
- Icemaker Added To Dometic Refrigerator (where available)

Cabinets & Furniture

- Oak Hardwood Cabinets
- Snow Maple Cabinets
- Frosted Maple Hardwood Cabinets
- Cherry Hardwood Cabinet

Cabinets & Furniture (Cont.)

- Flexsteel Large Free Standing Recliner Leather/Vinyl ilo Standard
- Flexsteel Front Seats - Leather/Vinyl w/6-Way Power Lumbar Support & Passenger Footrest
- Flexsteel Leather/Vinyl Sofa ilo Standard (where available)

Electrical Features

- Roof Mounted Spot Light
- 400 Watt Inverter (for dash TV)
- Heart Freedom 20 Inverter/Converter & 2 Extra Batteries

Exterior Features

- Hydraulic Leveling Jacks w/Automatic Control
- Rear Protective Tow Guard
- Front End Protective Shield

Interior Features

- Ceramic Floor Tile In Kitchen Area

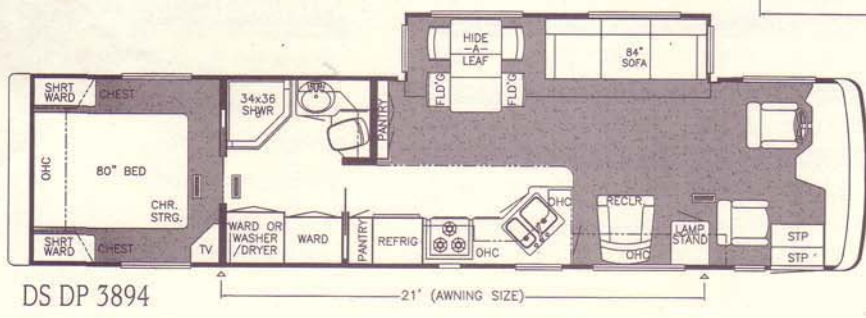
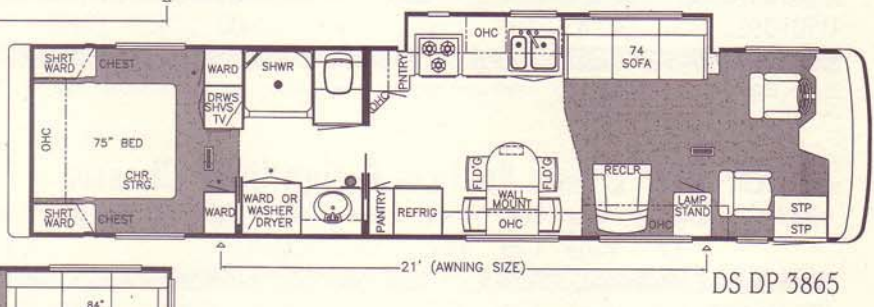
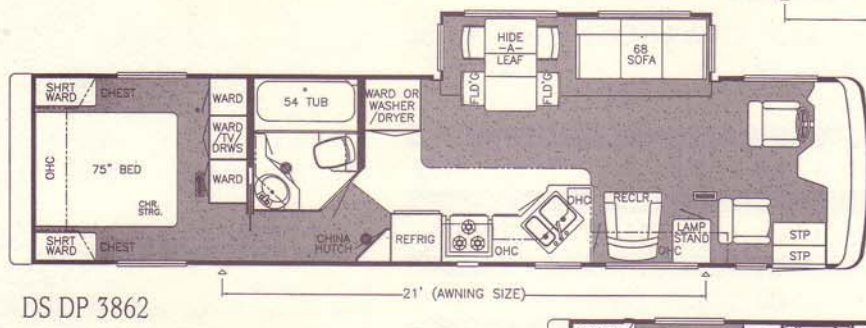
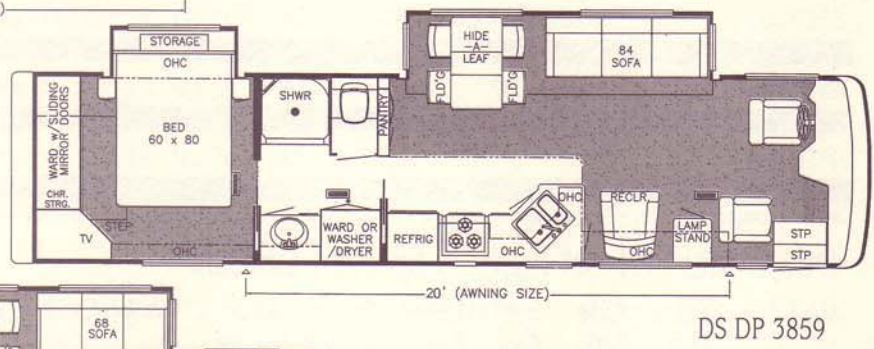
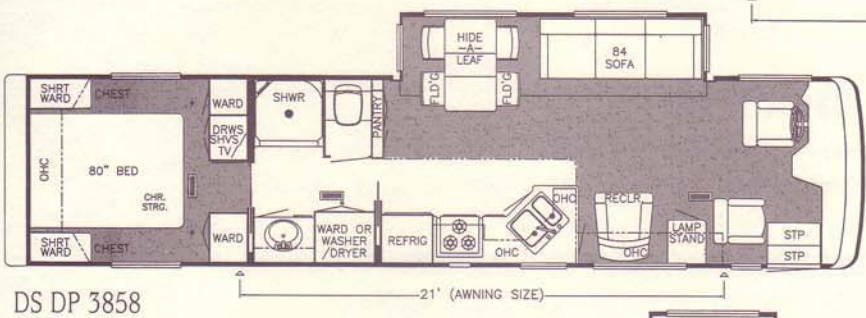
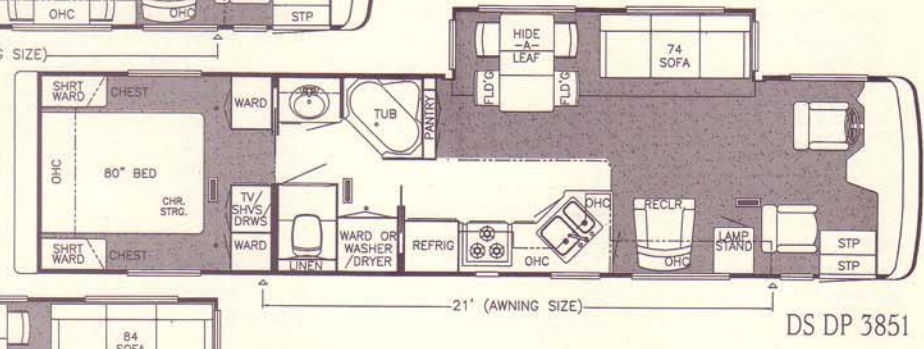
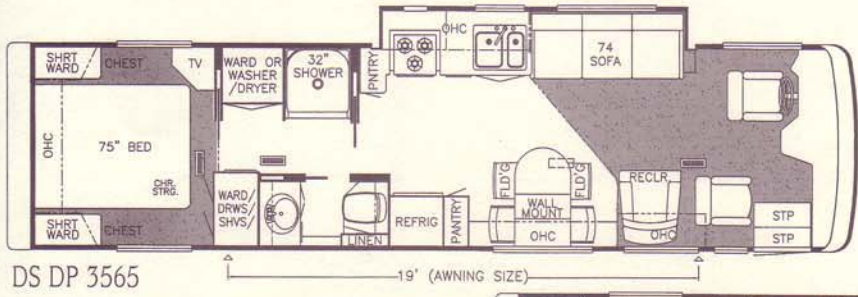
Windows, Awnings & Vents

- A&E 9000 Side Awning
- Driver's Side Door w/Power Window
- Double Pane Windows (not available on driver/passenger area)
- A&E 9000 Window Awning (price per window)

L P U S H E R S P E C I F I C A T I O N S

**DUTCH STAR DIESEL PUSHER
INSULATION "R" VALUES**

Roof	Sidewalls	Floor
R-17	R-12	R-12



Prices, specifications, and floorplans are subject to change at Newmar's discretion without prior written notice or obligation. Some floorplans may show optional chairs or end tables. See dealer for availability.

DIESEL PUSHER OPTIONAL FEATURES



K275
Booth dinette w/drawers ilo free standing or wall mount dinette - DP 3565



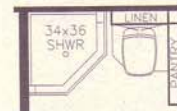
K103
75" Twin beds - DP 3851, 3858, 3862, 3865, 4060, 4080



K105
75" Twin beds - DP 3565, 3763



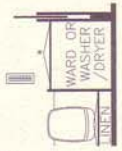
K107
80" Twin beds - DP 3894



P205
Unenclosed stool room w/corner shower - DP 3858, 3859



P206
Unenclosed stool room w/corner shower - DP 3865



P207
Unenclosed stool room - DP 3851



K910
L-sofa 66" leather w/incliner - All DP's except 3565, 3862 (not available w/center entry option)



K951
Honeymoon suite bedroom - All DP's, (except 3565, 3894 & bdrm. S.O.'s)

Compliments Of:

Dutch Star® Diesel Pushers Sizes & Capacities

Model	Approx. Overall Length	Overall Width Approx.	Approx. Overall Height	Interior Width	Interior Height	Grey Tank (Gal)	Sewage Tank (Gal)	Water Tank (Gal)	L/P Tank (Gal)	Furnace (btu)	Water Heater (gal)
DSDP3565	35'	101"	11'08"	95.5"	78"	65 gal	45 gal	105 gal	32	35000 btu	10 gal
DSDP3851	38'	101"	11'08"	95.5"	78"	65 gal	45 gal	105 gal	32	40000 btu	10 gal
DSDP3858	38'	101"	11'08"	95.5"	78"	65 gal	45 gal	105 gal	32	40000 btu	10 gal
DSDP3859	38'	101"	11'08"	95.5"	78"	65 gal	45 gal	105 gal	32	40000 btu	10 gal
DSDP3862	38'	101"	11'08"	95.5"	78"	65 gal	45 gal	105 gal	32	40000 btu	10 gal
DSDP3865	38'	101"	11'08"	95.5"	78"	65 gal	45 gal	105 gal	32	40000 btu	10 gal
DSDP3894	38'	101"	11'08"	95.5"	78"	65 gal	45 gal	105 gal	32	40000 btu	10 gal

Lengths, Heights, Widths and Dry Weights are approximate. Weight will vary based on optional equipment added to the above base weight.

Dutch Star® Diesel Pushers Spartan Chassis

Model	Engine H.P.	Axle Ratio	Fuel Cap	Wheel Base	Front GAWR	Rear GAWR	GVWR	GCWR	Approx. UVW	Approx. NCC
DSDP3565	300	4.78	100	216	10400	17000	27400	37400	22610	4790
DSDP3851	300	4.78	100	252	10400	17000	27400	37400	23300	4100
DSDP3858	300	4.78	100	252	10400	17000	27400	37400	23260	4140
DSDP3859	300	4.78	100	252	10400	17000	27400	37400	23610	3790
DSDP3862	300	4.78	100	252	10400	17000	27400	37400	22960	4440
DSDP3865	300	4.78	100	252	10400	17000	27400	37400	22610	4790
DSDP3894	300	4.78	100	252	10400	17000	27400	37400	23200	4200

Lengths, Heights, Widths, Dry Weights and Hitch Weights are approximate. Weight will vary based on optional equipment added to the above base weight.

We invite you to visit our state of the art production facility in Nappanee, Indiana.

Plant tours are offered at 10:00 a.m. and 1:00 p.m., Monday through Friday.

NewmarKountryKlub

Don't forget to check out the Klub—the Newmar Kountry Klub, that is. All you need for eligibility is to be a proud owner of any of the fine Newmar recreational vehicles.

Dutch Star® Diesel Pushers Freightliner Chassis

Model	Engine H.P.	Axle Ratio	Fuel Cap	Wheel Base	Front GAWR	Rear GAWR	GVWR	GCWR	Approx. UVW	Approx. NCC
DSDP3851	300	4.63	100	252	10400	17000	27400	32400	22700	4700
DSDP3858	300	4.63	100	252	10400	17000	27400	32400	22660	4740
DSDP3859	300	4.63	100	252	10400	17000	27400	32400	23010	4390
DSDP3862	300	4.63	100	252	10400	17000	27400	32400	22360	5040
DSDP3865	300	4.63	100	252	10400	17000	27400	32400	22010	5390
DSDP3894	300	4.63	100	252	10400	17000	27400	32400	22600	4800

Lengths, Heights, Widths and Dry Weights are approximate. Weight will vary based on optional equipment added to the above base weight.



An American Tradition Of Excellence

355 N DELAWARE ST • PO BOX 30
NAPPANEE IN 46550-0030
PHONE 219 773-7791
FAX 219 773-2895
<http://www.newmarcorp.com>