

2 0 0 1 D U T C H S T A R



D I E S E L P U S H E R • C L A S S A

N E W M A R C O R P O R A T I O N



"RESPECT THE MASTERPIECE. THERE IS NO QUALITY
SO GREAT, NONE SO MUCH NEEDED NOW."

FRANK LLOYD WRIGHT

QUALITY. IT'S A WAY OF LIFE.

In Nappanee, Indiana, there's a refreshing attitude towards life. It's an attitude so basic to the way people live that they couldn't imagine doing things differently. We respect quality in all its forms...in our friends, our faith and our families. Quality demands hard work and rewards with the satisfaction of a job well done. It is in the land and it is in the heart. It is in Newmar.

Newmar motorhomes represent real quality because the people who build them don't believe in shortcuts. Our customers understand this. It shows in all of our motorhomes. It shows in the Dutch Star.

Because it carries the Newmar name, you know it was built with craftsmanship, dedication and love. The result is the resale value and amenities that you've always wanted in a motorhome. Care that shows in every detail verging on obsession. The Dutch Star is an outstanding value, balancing excellence and affordability.

With floorplans, specifications and options choices available on every Dutch Star, chances are there's a configuration that is just right for you. Built for your way of life.

NEWMAR QUALITY: A WAY OF LIFE.



THE DUTCH STAR DIESEL PUSHER



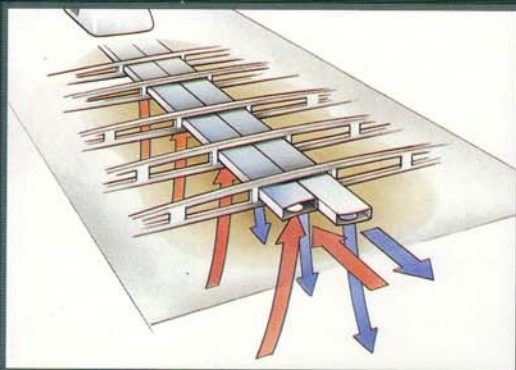
THE NEWMAR WAY OF LIFE. AT HOME ON



BASEMENT STORAGE IS EASY
TO ACCESS, EASY TO LOAD.

Because we have attended to every detail, you will travel with confidence. At times, life with a Dutch Star Diesel Pusher means a different scene every morning when you open your door. Other times it means sticking around a while to enjoy familiar friends and places. Either way, it is built for the journey by people who care deeply. Whether you plan to stay the night or the season, you'll find value, comfort and craftsmanship are your constant travelling companions.

THE ROAD.



BECAUSE NEWMAR FRAMES ITS UNITS LIKE THE FRAMING IN YOUR HOME, WE CAN PROVIDE TRUE CENTRAL AIR CONDITIONING. VENTS THROUGHOUT DELIVER COOL AIR AND RETURN WARM AIR, ALLOWING YOU TO CLOSE THE DOOR TO A ROOM AND STILL ENJOY TOTAL COMFORT.

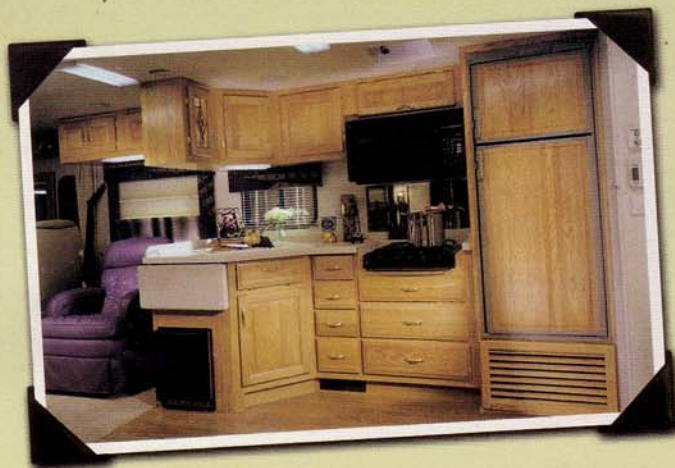


ALL DIESEL PUSHER CHASSIS ARCH UPWARDS DUE TO THE WEIGHT OF THE ENGINE AT THE REAR. NEWMAR ADDS A BRIDGE-LIKE TRUSS STRUCTURE THAT CORRECTS THIS ARCH, THUS ELIMINATING UNDUE STRESS ON THE SIDEWALLS.

THE DUTCH STAR DIESEL PUSHER



THE NEWMAR WAY OF LIFE. NOTHING QUITE COMPARES



THIS KITCHEN FEATURES AN L-SHAPED COUNTER, THREE-BURNER STOVE, 0.8 CUBIC FOOT MICROWAVE, ACRYLIC SINK, MATCHING REFRIGERATOR PANELS ON 8 CUBIC FOOT UNIT AND OUTWARD FACING CABINETS ABOVE PENINSULA, SURROUNDED IN MARDI GRAS/OAK.

Open the door. Step inside. Put your feet up. When we build your Dutch Star Diesel Pusher, we're thinking of our own homes in Nappanee, Indiana. Our craftspeople want your experience to be as pleasing as theirs when they return after a day of satisfying work. They decorate the interior of every Dutch Star with warmth and friendship. In a Dutch Star, wherever your journey takes you, we're glad you'll always feel at home.

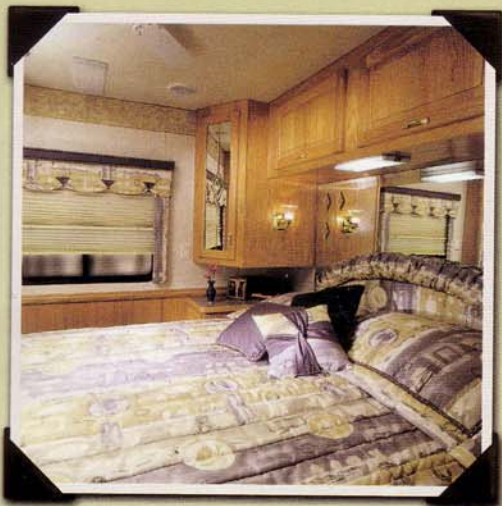


THIS DUTCH STAR DIESEL PUSHER FEATURES A KITCHEN/SOFA FLAT-FLOOR POWER SLIDEOUT AND A BEDROOM SLIDEOUT WITH OPTIONAL CHERRY HARDWOOD CABINETS AND TRIM.

TO THE FEELING OF HOME.



THE DUTCH STAR DIESEL PUSHER SHOWN WITH OPTIONAL LEATHER RECLINER.

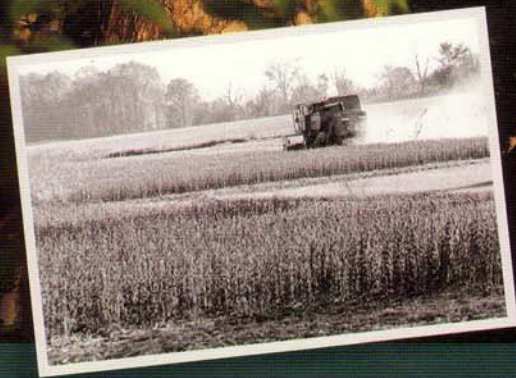


CONVENIENT NIGHT STANDS AND QUILTED BEDSPREAD WITH PILLOW SHAMS AND ACCENT PILLOWS ARE ALL STANDARD.



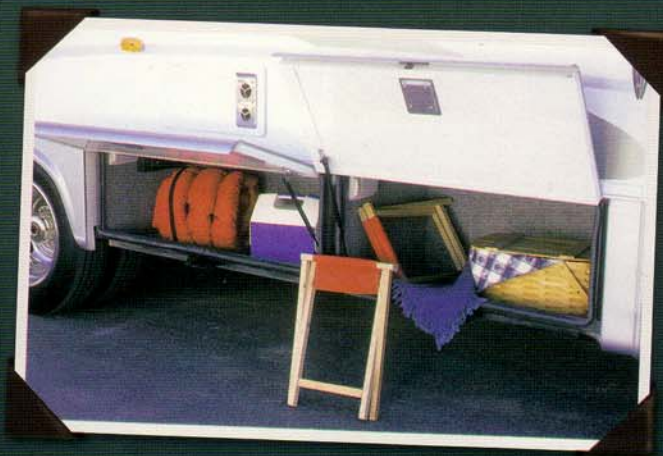
SOFA/DINETTE IN A NEWMAR ASSEMBLED FLAT-FLOOR POWER SLIDEOUT, SHOWN IN MARDI GRAS/OAK.

THE DUTCH STAR CLASS A



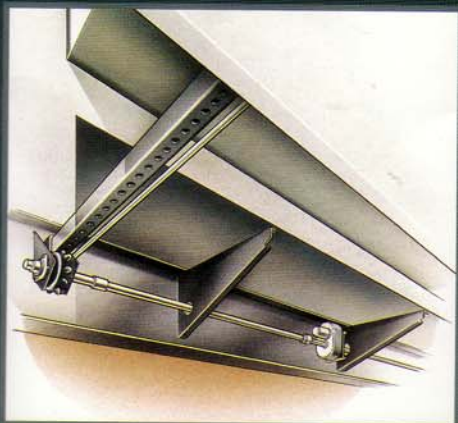
THE NEWMAR WAY OF LIFE. GET OUT THERE AND

Looking for a little adventure? The Dutch Star Class A gas motorhome brings it daily to your doorstep. You can experience life on the open road in a carefully crafted, lovingly built, value-oriented motorhome...without giving up on performance and style. Joining friends for weekends or heading off with the family for some vacation fun is definitely in the cards. In Nappanee, we know this simple truth: Life is good. In a Dutch Star, it can be even better.

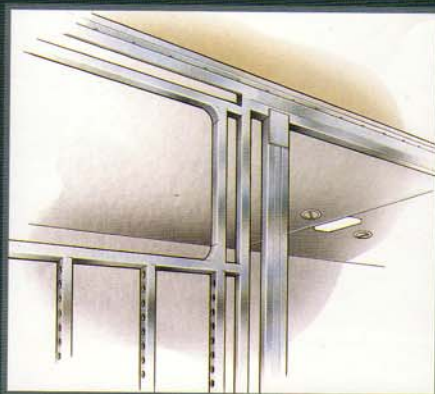


AMPLE SPACE AND CONVENIENT LIGHTS LOCATED IN THE EXTERIOR STORAGE COMPARTMENTS ARE JUST SOME OF THE STANDARD FEATURES ON THE DUTCH STAR CLASS A.

LIVE IT.



NEWMAR WAS THE PIONEER IN FLAT-FLOOR POWERED SLIDEOUTS. WE BUILD EVERY SLIDEOUT OURSELVES, USING A RACK AND PINION SYSTEM AND A CENTRALLY LOCATED ELECTRIC MOTOR THAT APPLIES EVEN POWER TO BOTH RACKS.



ALL NEWMAR PRODUCTS COME WITH 16-INCH ON-CENTER ALUMINUM FRAMING, PROVIDING STRENGTH, MORE ROOM FOR INSULATION AND THE SPACE TO RUN WIRING FOR ELECTRICAL OUTLET PLACEMENTS ON THE WALL, JUST LIKE YOU FIND AT HOME.

THE DUTCH STAR CLASS A



THE NEWMAR WAY OF LIFE. INSIDE, IT'S



THE FLAT-FLOOR POWER SLIDEOUT IS SPACIOUS, SHOWN HERE IN THE THYME INTERIOR WITH OPTIONAL SNOW MAPLE WOOD TRIM. STORAGE IS AVAILABLE UNDER THE DINETTE BENCHES.

It's the small things inside the Dutch Star Class A gas motorhome that tell the tale. Some things you sense immediately. The dedication of Newmar craftspeople is everywhere. See it in the cabinetry. Feel it in the sturdy furniture. Sense it in the soulful design. Soulful because it was built by people who put their all into their work. They don't just manufacture the Dutch Star, they live it...because they know you will live in it. It just wouldn't do for you to be any less than overwhelmed by our quality. And you won't be. Just look around - all around - and sense it for yourself.



RICH OAK CABINETRY SURROUNDS THE SPACIOUS KITCHEN AND LIVING AREA.

EVERYWHERE.



SNOW MAPLE HARDWOOD RAISED PANEL CABINET DOORS SURROUND THE BEDROOM WITH SPACIOUS STORAGE.

THIS KITCHEN FEATURES STANDARD OAK HARDWOOD PANELS ON THE CABINETS AND A GEMSTONE COUNTERTOP WITH COORDINATED EDGE.



THE KITCHEN FEATURES A GEMSTONE COUNTERTOP WITH ACRYLIC SINK, MICROWAVE, 3-BURNER RECESSED RANGE AND A 8 CUBIC FOOT DOMETIC® REFRIGERATOR, SHOWN IN OPTIONAL SNOW MAPLE.

"WE MASS PRODUCE IN VOLUMES OF ONE."

"It is my deepest belief that we need to treat others as we treat ourselves, that I should treat our customers in the same manner as I would want to be treated. I believe these values helped make our company what it is today. They affect everything we do."



QUALITY DESIGN "We don't take short cuts, we construct. No matter what Newmar model our customers bought, they were assembled on the same production line, built with the same high standards and care."

TESTING "We test everything. All of our motorhomes, for instance, are tested for leaks, for alignment and for weight before they leave the assembly line. We want to be sure our products work the way our customers expect them to work."

INNOVATIONS "We innovate for the long-term quality of our customer's life. For example, there's our flat-floor power slide out, which gives our customers as much living space as possible. We offer practical features that will make your life in a Newmar RV easier."

INDIVIDUAL RESPONSIBILITY "If one of our quality-control inspectors finds a problem in the plumbing, they pull a worker from the plumbing team to fix it. We believe it is the team's responsibility, no one else's. Our workers feel a personal obligation to make a customer's RV the best possible."

NEWMAR QUALITY "When it's all said and done, this translates to Newmar Quality. Customers must be able to enjoy their Newmar RV for years to come. There is no other way for us."

When we say 'Newmar Quality: A Way of Life,' we truly live it."

Virgil Miller, President, Newmar Corp.



NEWMAR QUALITY: A WAY OF LIFE

355 N. DELAWARE STREET
NAPPANEE, INDIANA 46550
PH: 219.773.7791 • WWW.NEWMARCORP.COM

WE INVITE YOU TO VISIT OUR STATE-OF-THE-ART PRODUCTION FACILITY
IN NAPPANEE, INDIANA. PLANT TOURS ARE OFFERED
AT 10:00 A.M. AND 1:00 P.M., MONDAY THROUGH FRIDAY.

DON'T FORGET TO CHECK OUT THE NEWMAR KOUNTRY KLUB. ALL YOU NEED FOR ELIGIBILITY IS TO BE A PROUD OWNER OF ANY OF THE FINE NEWMAR RECREATIONAL VEHICLES.

FOR A COMPLETE PHOTO GALLERY OF ALL NEWMAR PRODUCTS, VISIT OUR WEBSITE: WWW.NEWMARCORP.COM

SOME FEATURES SHOWN IN OUR LITERATURE ARE OPTIONAL. COLORS AND FINISHES ARE PHOTOGRAPHIC REPRESENTATIONS AND MAY APPEAR DIFFERENTLY WHEN VIEWING ACTUAL MATERIALS. PRICES, SPECIFICATIONS AND FLOORPLANS ARE SUBJECT TO CHANGE AT NEWMAR'S DISCRETION WITHOUT PRIOR WRITTEN NOTICE OR OBLIGATION. PLEASE SEE YOUR DEALER FOR ACTUAL SAMPLES AND SPECIFICATIONS.

2001 DUTCH STAR DIESEL PUSHER

OPTIONAL PAINT SCHEMES

NEW FOR 2001, NEWMAR IS OFFERING THREE BEAUTIFUL PAINT SCHEME OPTIONS AVAILABLE FOR THE DUTCH STAR DIESEL PUSHER. NEWMAR'S TWO STATE-OF-THE-ART PAINT SHOPS MAKE IT POSSIBLE TO PROVIDE THESE QUALITY PAINTED GRAPHICS.



FARMSTEAD GREEN PAINTED GRAPHICS



MOJAVE BROWN PAINTED GRAPHICS



MONTE CARLO BLUE PAINTED GRAPHICS



NEWMAR QUALITY: A WAY OF LIFE

355 NORTH DELAWARE STREET • PO BOX 30
NAPPANEE, INDIANA 46550
PH: 219-773-7791 • FX: 219-773-2895
WWW.NEWMARCORP.COM

COLORS AND FINISHES ARE PHOTOGRAPHIC REPRESENTATIONS AND MAY APPEAR DIFFERENTLY WHEN VIEWING ACTUAL MATERIALS. PAINT COLORS AND GRAPHICS ARE SUBJECT TO CHANGE AT NEWMAR'S DISCRETION WITHOUT PRIOR WRITTEN NOTICE OR OBLIGATION. PLEASE SEE YOUR DEALER FOR ACTUAL SAMPLES AND SPECIFICATIONS. ©2000 NEWMAR CORPORATION. PRINTED IN THE U.S.A. (11/00)

2 0 0 1 D U T C H S T A R



C L A S S A • D I E S E L P U S H E R
S P E C I F I C A T I O N S



N E W M A R C O R P O R A T I O N

STANDARD FEATURES

MOTORIZED CHASSIS FEATURES

- Standard Chassis – Ford F-53 Chassis with V-10 Engine
- Cruise Control
- Tilt Steering Wheel

AIR CONDITIONING & HEATING

- 15,000 BTU Brisk® Central Air Conditioner
- Dash Heater/Air Conditioner High Output
- LP Leak Detector

APPLIANCES & ACCESSORIES

- 6-Gallon Gas Water Heater – Direct Spark Ignition
- Spacesaver Microwave
- 19" Color TV
- 3-Burner Recessed Range with Glass Oven Door (piezzo ignition)
- AM/FM Stereo with CD Player (in dash)
- Cable TV Connection with RG6 Coax
- Dometic® 3862 Refrigerator (8 cu. ft.)
- Hardwood Raised Panel Refrigerator Front
- Satellite Prep – Phone/TV Jack and Recept
- Telephone Connection with one Phone Jack
- TV Antenna with Power Booster & two Jacks

CABINETS & FURNITURE

- Flexsteel, Swivel/Recline Front Seats with 3-Point Seat Belt

- Flexsteel, Swivel Barrel Chair (where shown on floor plan drawing)
- Drawers with Metal Guides
- Gemstone Countertop in Kitchen with Color Coordinated Edge and Acrylic Sink
- Laminate Countertop with Color Coordinated Gemstone Edge and Porcelain Lavatory in Bath
- Oak Hardwood Raised Panel Cabinet Doors

ELECTRICAL FEATURES

- 55-Amp Converter with Charger
- 2 – 12-Volt House Batteries on Pull-Out Tray
- Battery Disconnect (for house battery)
- Generac® Generator with One Remote Switch (4.8 on Ford; 6.6 on Freightliner chassis)
- 5-Watt Solar Panel to Charge Chassis Battery
- Driving Lights
- Emergency Engine Start Switch
- Exterior Security Lights (one installed on each side)
- Lights in Exterior Storage Compartments

EXTERIOR FEATURES

- BriteTek Roof with 7MM Decking
- Convex Exterior Mirrors with Remote Control and Defrost
- Gel-Coated Fiberglass Exterior Sides
- Hitch for Towing Car (with two extra 14-gauge wires for customer use) (class-3, 5000# rating)
- Roof Rack & Ladder

INTERIOR FEATURES

- Carpeting – Nylon with Scotchguard® Stain Release
- Vinyl Floor in Kitchen and Bath Area
- Day/Night Pleated Window Shades & Lambrequins
- Quilted Bedspread with Reverse Sham and Accent Pillow
- Woven Soft Touch Ceiling

PLUMBING/BATH FEATURES

- China Stool with Spray Attachment
- Monitor Panel
- Sewage Holding Tank Rinse
- Tub/Shower Surround with Shower Door
- Water Heater Bypass System

CONSTRUCTION FEATURES

- Aluminum Frame Sidewalls & Roof Construction, 16" On Center

WINDOWS, AWNINGS & VENTS

- Automatic Entrance Door Step
- Fan-tastic Vent with Rain Sensor in Kitchen
- Power Vent in Bath Area with Wall Switch
- Lighted Acrylic Assist Handle at Entrance Door
- Skylight in Bathroom (located above tub/shower)
- Stainless Steel Wheel Simulators
- Tinted Safety Glass Windows

OPTIONAL FEATURES

OPTION PACKAGES

- 2 – 13.5 Penguin® AC, 5.5 Generac® Generator, 50-Amp Service with Flex Cord & Auto Changeover (except Freightliner Chassis) [128 lbs.]
- 2 – 13.5 Penguin® AC, 6.6 Generac® Generator, 50-Amp Service, Flex Cord & Auto Changeover (not available on 2957) [154 lbs.]
- Touch Control Jacks, Rear View Monitor System, A&E Main Slideout Cover & 8500 Side Awning [173 lbs.]

APPLIANCES & ACCESSORIES

- Ceiling Fan in Bedroom (available on 3256, 3366, 3368, 3450, 3451, 3455, 3465) [10 lbs.]

CABINETS & FURNITURE

- Leathermate Front Seats with 6-Way Power, Power Lumbar & Ergo-Flex Arms [50 lbs.]
- Leathermate Swivel/Rocker Recliner in lieu of Standard (not available on 2957, 3058) [5 lbs.]
- Built-in Booth Dinette in lieu of Standard (available on 3256, 3366, 3368, 3451, 3455, 3466, 3666) [23 lbs.]

- Snow Maple Cabinets [0 lbs.]

ELECTRICAL FEATURES

- 400-Watt Inverter (for dash TV) [10 lbs.]

INTERIOR FEATURES

- Simulated Plank Floor in Bath [34 lbs.]
- Simulated Plank Floor in Kitchen Area [37 lbs.]

WINDOWS, AWNINGS & VENTS

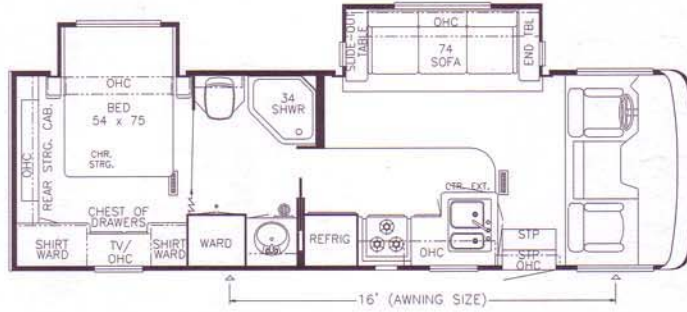
- Driver's Side Door with Power Window (available on 2957, 3058, 3256, 3450, 3451, 3455) [50 lbs.]

[] – INDICATES THE NET DIFFERENCE IN WEIGHT WITH THIS OPTION

SPECIFICATIONS

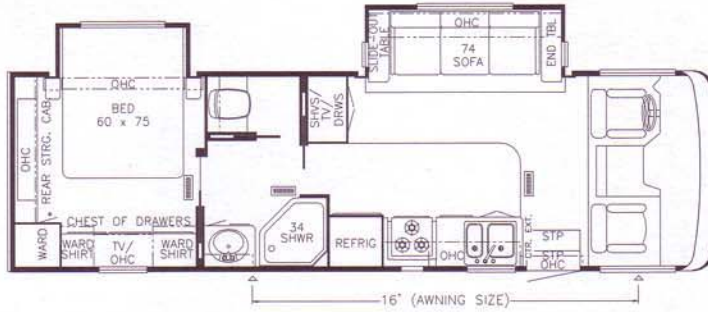
MODEL 2001 DSCA 2957

Length (overall):	30' 6"
Width (overall):	100'
Height (overall):	11' 5"
Width (interior):	94'
Height (interior):	78"
Grey:	40
Sewage:	40
Water:	45
LP:	25
Furnace:	30,000
Water Heater:	6



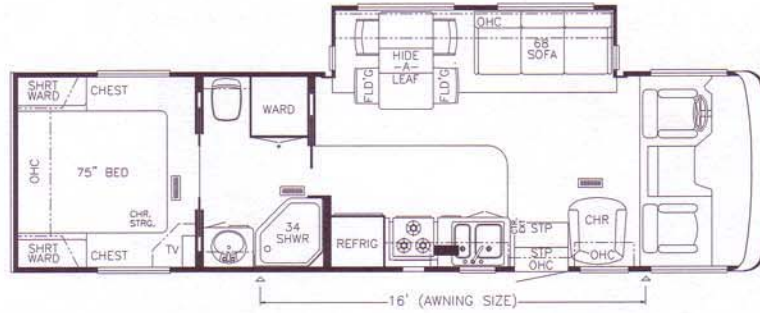
MODEL 2001 DSCA 3058

Length (overall):	31' 6"
Width (overall):	100'
Height (overall):	11' 5"
Width (interior):	94'
Height (interior):	78"
Grey:	40
Sewage:	40
Water:	45
LP:	25
Furnace:	30,000
Water Heater:	6



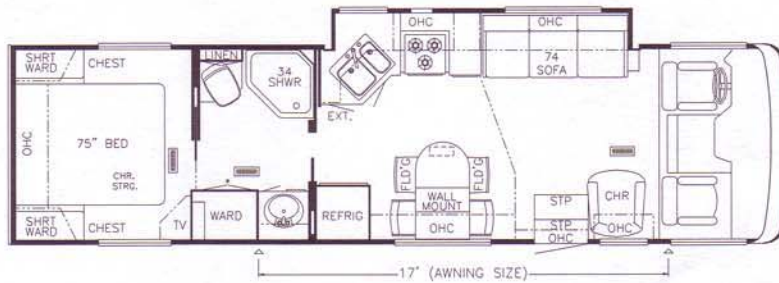
MODEL 2001 DSCA 3256

Length (overall):	33' 6"
Width (overall):	100'
Height (overall):	11' 5"
Width (interior):	94'
Height (interior):	78"
Grey:	40
Sewage:	40
Water:	45
LP:	25
Furnace:	30,000
Water Heater:	6



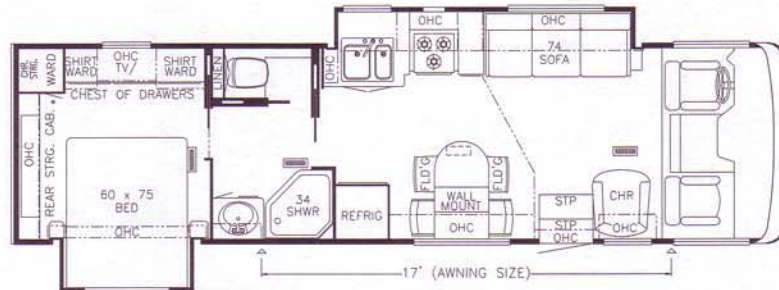
MODEL 2001 DSCA 3366

Length (overall):	34' 5"
Width (overall):	100'
Height (overall):	11' 5"
Width (interior):	94'
Height (interior):	78"
Grey:	40
Sewage:	40
Water:	45
LP:	25
Furnace:	35,000
Water Heater:	6



MODEL 2001 DSCA 3368

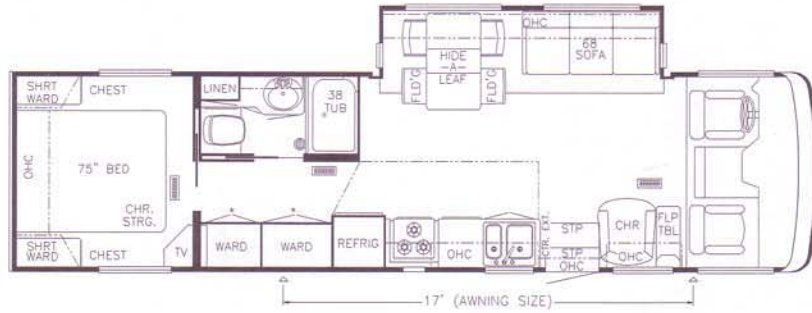
Length (overall):	34' 5"
Width (overall):	100'
Height (overall):	11' 5"
Width (interior):	94'
Height (interior):	78"
Grey:	40
Sewage:	40
Water:	45
LP:	25
Furnace:	35,000
Water Heater:	6



SPECIFICATIONS

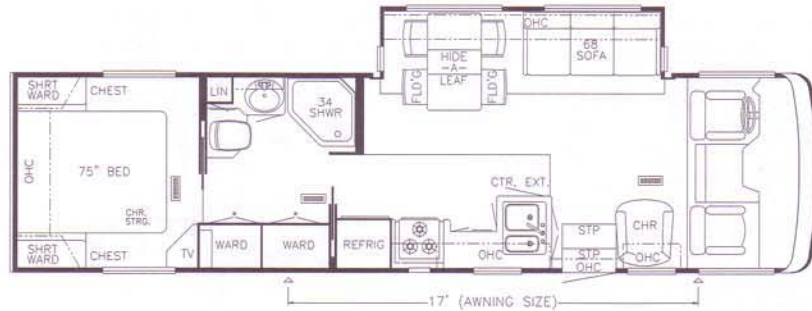
**MODEL
2001 DSCA 3450**

Length (overall):	35' 6"
Width (overall):	100'
Height (overall):	11' 5"
Width (interior):	94'
Height (interior):	78'
Grey:	40
Sewage:	40
Water:	45
LP:	25
Furnace:	35,000
Water Heater:	6



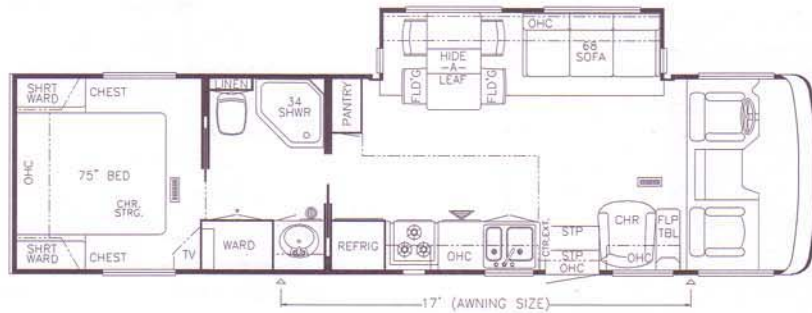
**MODEL
2001 DSCA 3451**

Length (overall):	35' 6"
Width (overall):	100'
Height (overall):	11' 5"
Width (interior):	94'
Height (interior):	78'
Grey:	40
Sewage:	40
Water:	45
LP:	25
Furnace:	35,000
Water Heater:	6



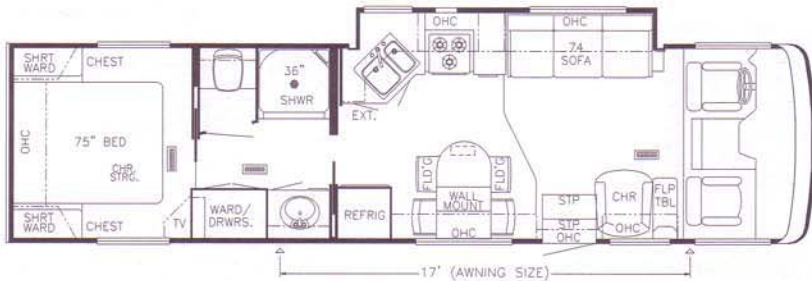
**MODEL
2001 DSCA 3455**

Length (overall):	35' 6"
Width (overall):	100'
Height (overall):	11' 5"
Width (interior):	94'
Height (interior):	78'
Grey:	40
Sewage:	40
Water:	45
LP:	25
Furnace:	35,000
Water Heater:	6



**MODEL
2001 DSCA 3466**

Length (overall):	35' 6"
Width (overall):	100'
Height (overall):	11' 5"
Width (interior):	94'
Height (interior):	78'
Grey:	40
Sewage:	40
Water:	45
LP:	25
Furnace:	35,000
Water Heater:	6



**MODEL
2001 DSCA 3666**

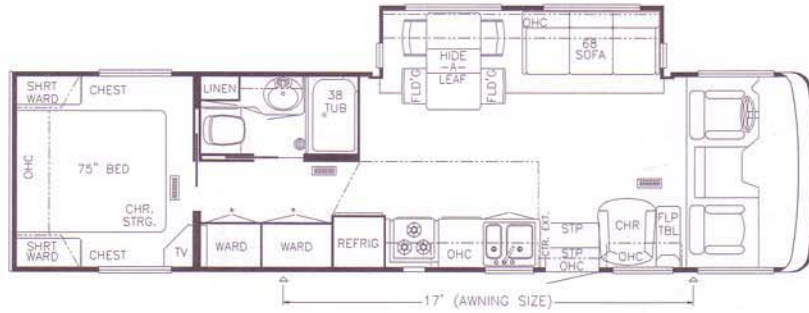
Length (overall):	37' 6"
Width (overall):	100'
Height (overall):	11' 5"
Width (interior):	94'
Height (interior):	78'
Grey:	40
Sewage:	40
Water:	45
LP:	25
Furnace:	35,000
Water Heater:	6



SPECIFICATIONS

**MODEL
2001 DSCA 3450**

Length (overall):	35' 6"
Width (overall):	100'
Height (overall):	11' 5"
Width (interior):	94'
Height (interior):	78'
Grey:	40
Sewage:	40
Water:	45
LP:	25
Furnace:	35,000
Water Heater:	6



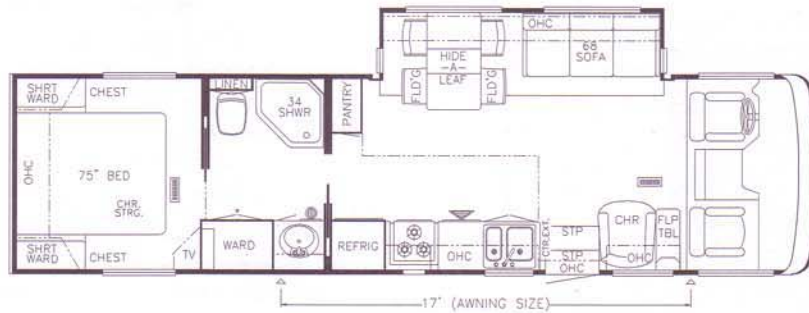
**MODEL
2001 DSCA 3451**

Length (overall):	35' 6"
Width (overall):	100'
Height (overall):	11' 5"
Width (interior):	94'
Height (interior):	78'
Grey:	40
Sewage:	40
Water:	45
LP:	25
Furnace:	35,000
Water Heater:	6



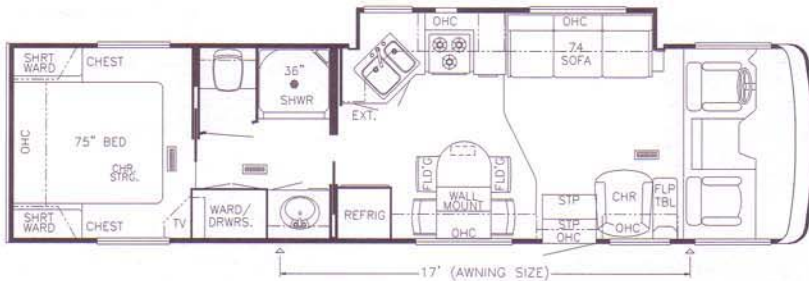
**MODEL
2001 DSCA 3455**

Length (overall):	35' 6"
Width (overall):	100'
Height (overall):	11' 5"
Width (interior):	94'
Height (interior):	78'
Grey:	40
Sewage:	40
Water:	45
LP:	25
Furnace:	35,000
Water Heater:	6



**MODEL
2001 DSCA 3466**

Length (overall):	35' 6"
Width (overall):	100'
Height (overall):	11' 5"
Width (interior):	94'
Height (interior):	78'
Grey:	40
Sewage:	40
Water:	45
LP:	25
Furnace:	35,000
Water Heater:	6



**MODEL
2001 DSCA 3666**

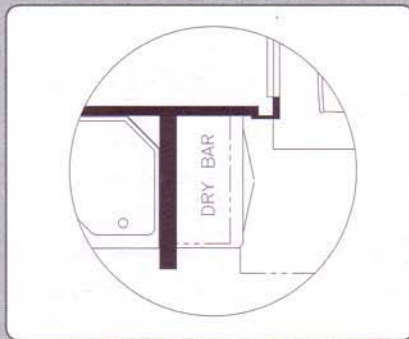
Length (overall):	37' 6"
Width (overall):	100'
Height (overall):	11' 5"
Width (interior):	94'
Height (interior):	78'
Grey:	40
Sewage:	40
Water:	45
LP:	25
Furnace:	35,000
Water Heater:	6



FLOORPLAN OPTIONS



K090
TWIN BEDS
DSCA: 3256, 3366, 3450, 3451,
3455, 3466



K210
DRY BAR IN LIEU OF PANTRY
DSCA: 3455



STANDARD FEATURES

MOTORIZED CHASSIS FEATURES

- Standard Chassis – Freightliner X-Line (330 HP) (available on 4057, 4095)
- Standard Chassis – Spartan Mountain Master (330 HP) (not available on 4057, 4095)
- Cruise Control
- Tilt & Telescope Steering Wheel

AIR CONDITIONING & HEATING

- 13,500 BTU Penguin® Central Air Conditioner
- Dash Heater/Air Conditioner High Output
- LP Leak Detector

APPLIANCES & ACCESSORIES

- 10-Gallon Gas/Electric Water Heater – Direct Spark Ignition
- Spacesaver Microwave
- 27" Color TV In Dash Overhead
- Color TV in Bedroom
- 3-Burner Recessed Range with Glass Oven Door (piezzo ignition)
- Air Horns
- AM/FM Stereo with CD Player (in dash)
- Cable TV Connection with RG6 Coax
- Dometic® 3862 Refrigerator (8 cu. ft.)
- Hardwood Raised Panel Refrigerator Front
- Rear View Monitor System
- Telephone Connection with one Phone Jack
- TV Antenna with Power Booster & two Jacks
- VCR

CABINETS & FURNITURE

- Flexsteel® Swivel/Recline Front Seats with 3-Point Seat Belt
- Flexsteel® Swivel/Rocker Recliner with Adjustable Headrest
- 6-Way Power Driver's Seat
- Drawers with Metal Guides
- Gemstone Countertop in Kitchen with Color Coordinated Edge and Acrylic Sink
- Gemstone Countertop with Color Coordinated Edge and Integrated Porcelain Lavatory in Bath
- Hidden Leaf Dinette Table with Two Fixed Chairs and Two Folding Chairs
- Oak Hardwood Raised Panel Cabinet Doors

ELECTRICAL FEATURES

- 2 – 45-Amp Converters
- 2 – 6-Volt Batteries
- Battery Disconnect (for house battery)
- 6.6 Generac® Generator with LP Conversion and Automatic Changeover
- 5-Watt Solar Panel to Charge Chassis Battery
- 50-Amp Electrical Service with Flexible Cord
- Driving Lights
- Emergency Engine Start Switch
- Exterior Security Lights (one installed on each side)
- Interior Courtesy Lights
- Lights in Exterior Storage Compartments

EXTERIOR FEATURES

- BriteTek Roof with 7MM Decking
- Convex Exterior Mirrors with Remote Control and Defrost

- Gel-Coated Fiberglass Exterior Sides
- Hitch for Towing Car (with two extra 14-gauge wires for customer use) (class-3, 5000# rating)
- Hydraulic Leveling Jacks with "Touch" Manual Control
- Roof Rack & Ladder

INTERIOR FEATURES

- Carpeting – Nylon with Scotchguard® Stain Release
- Day/Night Pleated Window Shades & Lambrequins
- Padded Vinyl Ceiling
- Quilted Bedspread with Pillow Sham & Accent Pillows

PLUMBING/BATH FEATURES

- China Stool with Spray Attachment
- Exterior Shower (located on off door side)
- Fiberglass Tub/Shower with Glass Shower Door
- Monitor Panel
- Sewage Holding Tank Rinse
- Water Heater Bypass System

CONSTRUCTION FEATURES

- Aluminum Frame Sidewalls & Roof Construction, 16" On Center

WINDOWS, AWNINGS & VENTS

- Automatic Double Entrance Door Step
- Fan-tastic Vent with Rain Sensor in Kitchen
- Power Vent in Bath Area with Wall Switch
- Skylight in Bathroom with Soft Shade (located above tub/shower)
- Stainless Steel Wheel Simulators
- Tinted Safety Glass Windows

OPTIONAL FEATURES

APPLIANCES & ACCESSORIES

- 30" Convection Microwave with 3-Burner Cooktop [13 lbs.]
- Dometic® 1062 Refrigerator (10 cu. ft.) [91 lbs.]

CABINETS & FURNITURE

- Leather/Vinyl Front Seats with 6-Way Power, Lumbar Support & Passenger Footrest [38 lbs.]
- Cherry Hardwood Cabinets [25 lbs.]

- Frosted Maple Hardwood Cabinets [25 lbs.]
- Oak Hardwood Cabinets [25 lbs.]
- Snow Maple Cabinets [0 lbs.]

ELECTRICAL FEATURES

- 400-Watt Inverter (for dash TV) [10 lbs.]
- Heart Freedom 20 Inverter/Charger & two Extra Batteries [178 lbs.]
- Roof-Mounted Spot Light [3 lbs.]

EXTERIOR FEATURES

- Hydraulic Leveling Jacks with Automatic Control [0 lbs.]
- Painted Exterior Graphics with Clear Coat Finish [0 lbs.]

INTERIOR FEATURES

- Ceramic Floor Tile in Bath Area [75 lbs.]
- Ceramic Floor Tile in Kitchen Area [35 lbs.]

SPECIFICATIONS

MODEL 2001 DSDP 3551

Length (overall):	35' 6"
Width (overall):	101'
Height (overall):	11' 8"
Width (interior):	95.5'
Height (interior):	78'
Grey:	65
Sewage:	45
Water:	105
LP:	32
Furnace:	35,000
Water Heater:	10



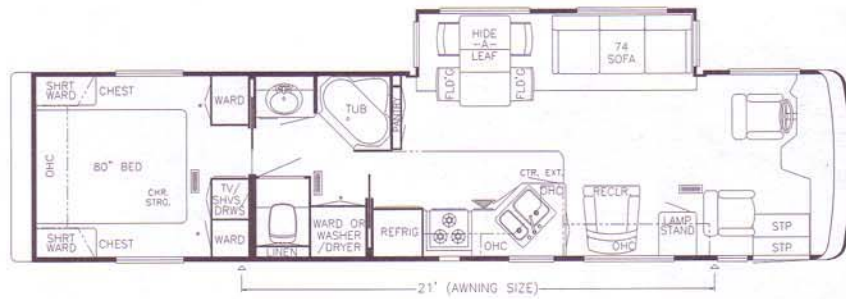
MODEL 2001 DSDP 3566

Length (overall):	35' 6"
Width (overall):	101'
Height (overall):	11' 8"
Width (interior):	95.5'
Height (interior):	78'
Grey:	65
Sewage:	45
Water:	105
LP:	32
Furnace:	35,000
Water Heater:	10



MODEL 2001 DSDP 3851

Length (overall):	38' 6"
Width (overall):	101'
Height (overall):	11' 8"
Width (interior):	95.5'
Height (interior):	78'
Grey:	65
Sewage:	45
Water:	105
LP:	32
Furnace:	42,000
Water Heater:	10



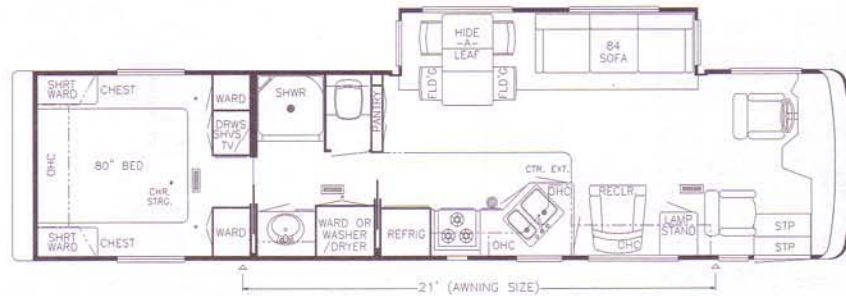
MODEL 2001 DSDP 3852

Length (overall):	38' 6"
Width (overall):	101'
Height (overall):	11' 8"
Width (interior):	95.5'
Height (interior):	78'
Grey:	65
Sewage:	45
Water:	105
LP:	32
Furnace:	42,000
Water Heater:	10



MODEL 2001 DSDP 3858

Length (overall):	38' 6"
Width (overall):	101'
Height (overall):	11' 8"
Width (interior):	95.5'
Height (interior):	78'
Grey:	65
Sewage:	45
Water:	105
LP:	32
Furnace:	42,000
Water Heater:	10

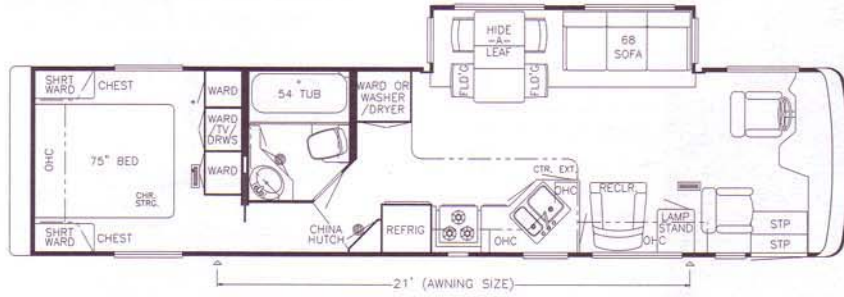


THE DUTCH STAR DIESEL PUSHER

SPECIFICATIONS

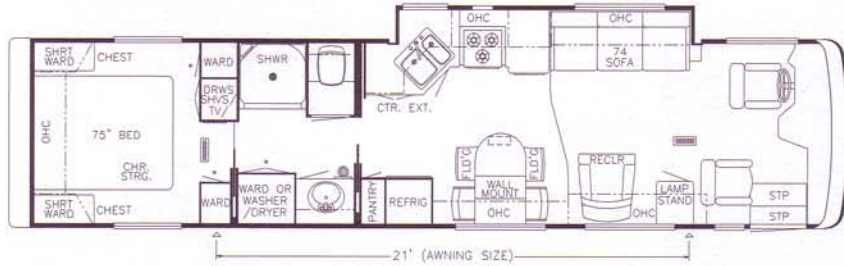
MODEL 2001 DSDP 3862

Length (overall):	38' 6"
Width (overall):	101'
Height (overall):	11' 8"
Width (interior):	95.5'
Height (interior):	78"
Grey:	65
Sewage:	45
Water:	105
LP:	32
Furnace:	42,000
Water Heater:	10



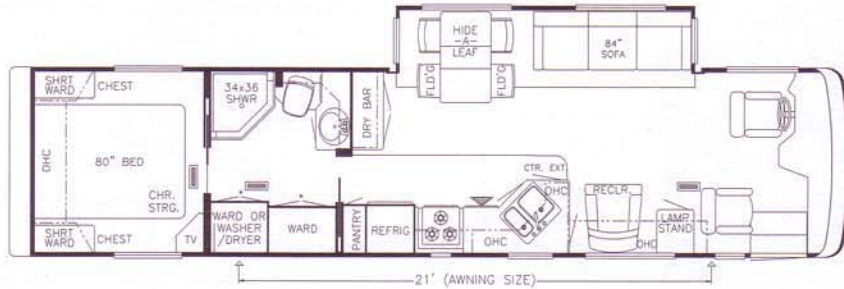
MODEL 2001 DSDP 3868

Length (overall):	38' 6"
Width (overall):	101'
Height (overall):	11' 8"
Width (interior):	95.5'
Height (interior):	78"
Grey:	65
Sewage:	45
Water:	105
LP:	32
Furnace:	42,000
Water Heater:	10



MODEL 2001 DSDP 3883

Length (overall):	38' 6"
Width (overall):	101'
Height (overall):	11' 8"
Width (interior):	95.5'
Height (interior):	78"
Grey:	65
Sewage:	45
Water:	105
LP:	32
Furnace:	42,000
Water Heater:	10



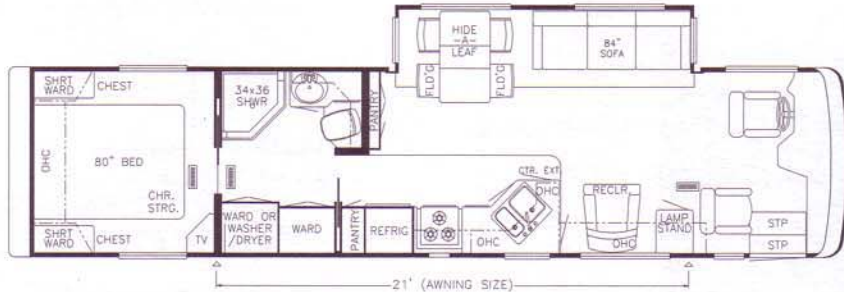
MODEL 2001 DSDP 3891

Length (overall):	38' 6"
Width (overall):	101'
Height (overall):	11' 8"
Width (interior):	95.5'
Height (interior):	78"
Grey:	65
Sewage:	45
Water:	105
LP:	32
Furnace:	42,000
Water Heater:	10



MODEL 2001 DSDP 3894

Length (overall):	38' 6"
Width (overall):	101'
Height (overall):	11' 8"
Width (interior):	95.5'
Height (interior):	78"
Grey:	65
Sewage:	45
Water:	105
LP:	32
Furnace:	42,000
Water Heater:	10



SPECIFICATIONS

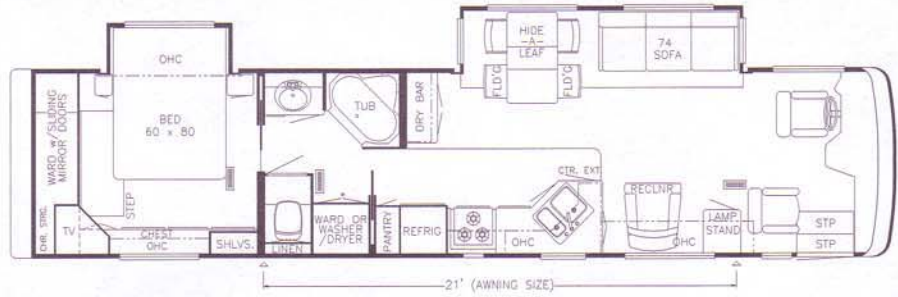
MODEL 2001 DSDP 4057

Length (overall):	40' 6"
Width (overall):	101'
Height (overall):	11' 8"
Width (interior):	95.5'
Height (interior):	78"
Grey:	65
Sewage:	45
Water:	105
LP:	32
Furnace:	42,000
Water Heater:	10

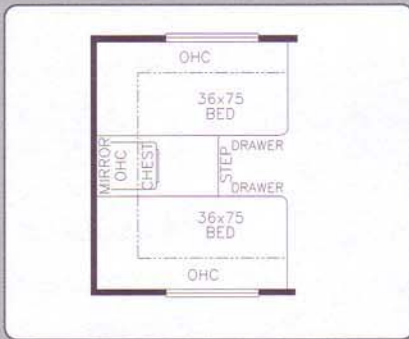


MODEL 2001 DSDP 4095

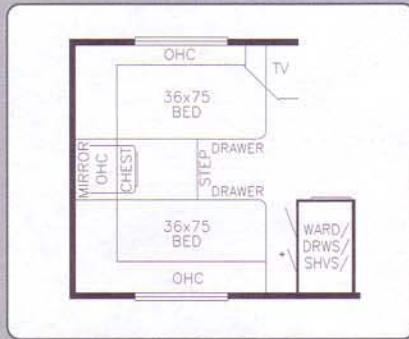
Length (overall):	40' 6"
Width (overall):	101'
Height (overall):	11' 8"
Width (interior):	95.5'
Height (interior):	78"
Grey:	65
Sewage:	45
Water:	105
LP:	32
Furnace:	42,000
Water Heater:	10



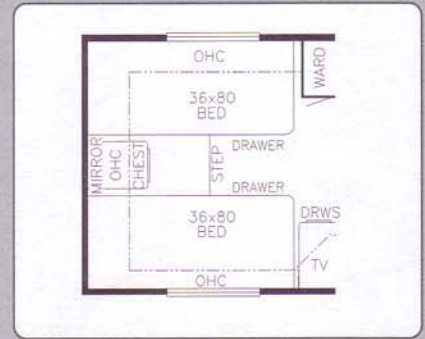
FLOORPLAN OPTIONS



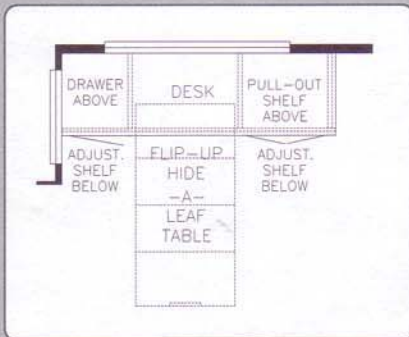
K103
75" TWIN BEDS
DSDP: 3851, 3858, 3862, 3868,
4057



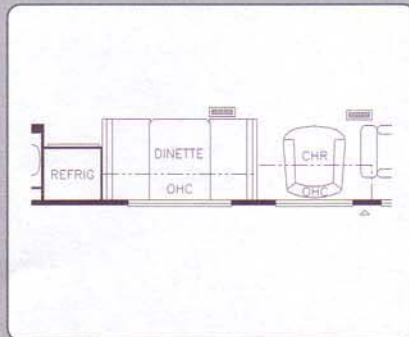
K105
75" TWIN BEDS
DSDP: 3551, 3566



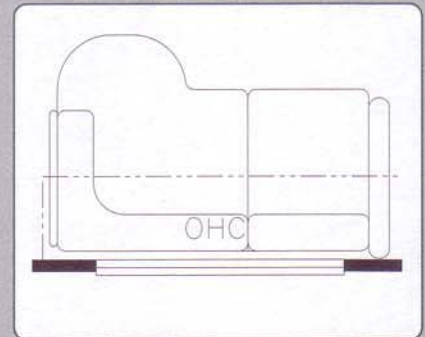
K107
80" TWIN BEDS
DSDP: 3894



K124
DINETTE COMPUTER STATION COMBO
IN LIEU OF DINETTE TABLE
DSDP: 3551, 3851, 3852, 3858,
3862, 3883, 3894, 4057,
4095



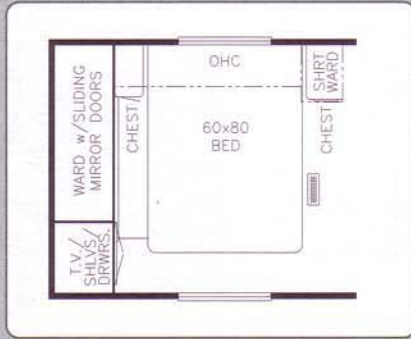
K275
BOOTH DINETTE W/DRAWERS IN LIEU OF
FREESTANDING OR WALL MOUNT
DSDP: 3566



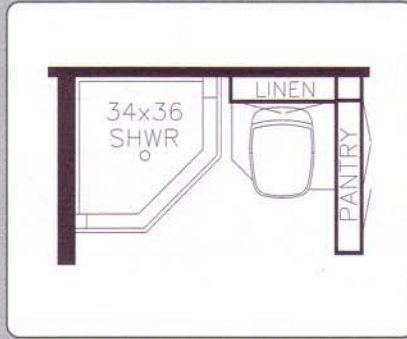
K910
L-SOFA 66" LEATHER WINCLINER
DSDP: 3851, 3852, 3858, 3868,
3883, 3891, 3894, 4057,
4095

THE DUTCH STAR DIESEL PUSHER

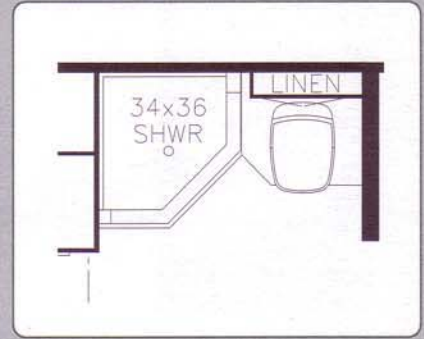
FLOORPLAN OPTIONS



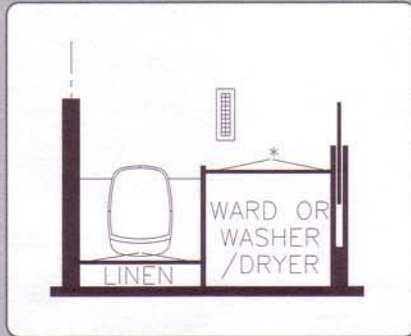
K955
HONEYMOON SUITE BEDROOM
 DSDP: 3851, 3858, 3862,
 3868, 4057



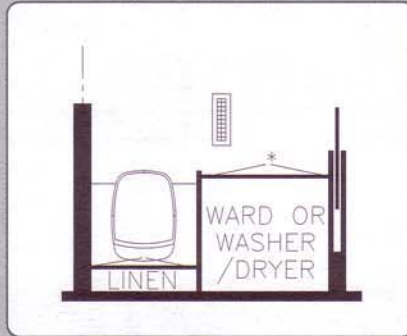
P205
UNENCLOSED STOOL ROOM
W/CORNER SHOWER
 DSDP: 3852, 3858



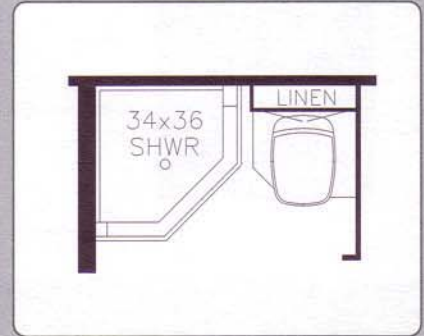
P206
UNENCLOSED STOOL ROOM
W/CORNER SHOWER
 DSDP: 3868



P207
UNENCLOSED STOOL ROOM
 DSDP: 3851



P209
UNENCLOSED STOOL ROOM
 DSDP: 4095



P211
UNENCLOSED STOOL ROOM
W/CORNER SHOWER
 DSDP: 3891

DUTCH STAR CLASS A FORD CHASSIS

Model	Engine HP	Axle Ratio	Fuel Cap.	Wheel Base	Front GAWR	Rear GAWR	GVWR	GCWR	Approx. UVW	Approx. NCC
2001DSCA2957	310	5.38	75	172	7,000	13,500	20,500	26,000	15,443	5,057
2001DSCA3058	310	5.38	75	178	7,000	13,500	20,500	26,000	15,636	4,864
2001DSCA3256	310	5.38	75	200	7,000	13,500	20,500	26,000	15,612	4,888
2001DSCA3366	310	5.38	75	208	7,000	13,500	20,500	26,000	15,829	4,671
2001DSCA3368	310	5.38	75	208	7,000	13,500	20,500	26,000	16,466	4,034
2001DSCA3450	310	5.38	75	216	7,000	13,500	20,500	26,000	16,060	4,440
2001DSCA3451	310	5.38	75	216	7,000	13,500	20,500	26,000	16,289	4,211
2001DSCA3455	310	5.38	75	216	7,000	13,500	20,500	26,000	16,233	4,267
2001DSCA3466	310	5.38	75	216	7,000	13,500	20,500	26,000	16,069	4,431
2001DSCA3666	310	5.38	75	228	7,000	13,500	20,500	26,000	17,216	3,284

DUTCH STAR CLASS A FREIGHTLINER CHASSIS

Model	Engine HP	Axle Ratio	Fuel Cap.	Wheel Base	Front GAWR	Rear GAWR	GVWR	GCWR	Approx. UVW	Approx. NCC
2001DSCA2957	225	4.10	60	172	7,000	13,500	20,500	25,500	16,043	4,457
2001DSCA3058	225	4.10	60	178	7,000	12,500	20,500	25,500	16,236	4,264
2001DSCA3256	225	4.10	60	200	7,000	13,500	20,500	25,500	16,212	4,288
2001DSCA3366	225	4.10	60	208	7,000	13,500	20,500	25,500	16,429	4,071
2001DSCA3368	225	4.10	60	208	7,000	13,500	20,500	25,500	17,066	3,434
2001DSCA3450	225	4.10	60	208	7,000	13,500	20,500	25,500	16,660	3,840
2001DSCA3451	225	4.10	60	208	7,000	13,500	20,500	25,500	16,889	3,611
2001DSCA3455	225	4.10	60	208	7,000	13,500	20,500	25,500	16,833	3,667
2001DSCA3466	225	4.10	60	216	7,000	13,500	20,500	25,500	16,669	3,831
2001DSCA3666	225	4.10	60	228	7,000	13,500	20,500	25,500	17,816	2,684

DUTCH STAR CLASS A WORKHORSE CHASSIS

Model	Engine HP	Axle Ratio	Fuel Cap.	Wheel Base	Front GAWR	Rear GAWR	GVWR	GCWR	Approx. UVW	Approx. NCC
2001DSCA2957	290	4.63	75	172	6,000	12,000	18,000	21,000	14,843	3,157
2001DSCA3058	290	4.63	75	178	6,000	12,000	18,000	21,000	15,036	2,964
2001DSCA3256	290	4.63	75	200	6,000	12,000	18,000	21,000	15,012	2,988
2001DSCA3366	290	4.63	75	208	6,000	12,000	18,000	21,000	15,229	2,771
2001DSCA3368	290	4.63	75	208	6,000	12,000	18,000	21,000	15,866	2,134
2001DSCA3450	290	4.63	75	208	6,000	12,000	18,000	21,000	15,460	2,540
2001DSCA3451	290	4.63	75	208	6,000	12,000	18,000	21,000	15,689	2,311
2001DSCA3455	290	4.63	75	208	6,000	12,000	18,000	21,000	15,633	2,367
2001DSCA3466	290	4.63	75	216	6,000	12,000	18,000	21,000	15,469	2,531

DUTCH STAR DIESEL PUSHER SPARTAN CHASSIS

Model	Engine HP	Axle Ratio	Fuel Cap.	Wheel Base	Front GAWR	Rear GAWR	GVWR	GCWR	Approx. UVW	Approx. NCC
2001DSDP3551	330	4.63	100	216	12,000	17,000	29,000	39,000	22,503	6,497
2001DSDP3566	330	4.63	100	216	12,000	17,000	29,000	39,000	22,462	6,538
2001DSDP3851	330	4.63	100	252	12,000	17,000	29,000	39,000	23,258	5,742
2001DSDP3852	330	4.63	100	252	12,000	17,000	29,000	39,000	23,148	5,852
2001DSDP3858	330	4.63	100	252	12,000	17,000	29,000	39,000	23,224	5,776
2001DSDP3862	330	4.63	100	252	12,000	17,000	29,000	39,000	23,156	5,844
2001DSDP3868	330	4.63	100	252	12,000	17,000	29,000	39,000	23,154	5,846
2001DSDP3883	330	4.63	100	252	12,000	17,000	29,000	39,000	23,109	5,891
2001DSDP3891	330	4.63	100	252	12,000	17,000	29,000	39,000	23,671	5,329
2001DSDP3894	330	4.63	100	252	12,000	17,000	29,000	39,000	23,588	5,412

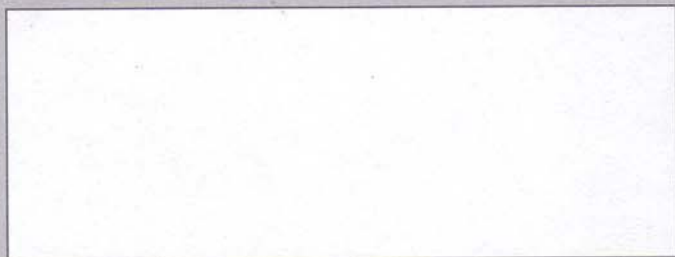
DUTCH STAR DIESEL PUSHER FREIGHTLINER CHASSIS

Model	Engine HP	Axle Ratio	Fuel Cap.	Wheel Base	Front GAWR	Rear GAWR	GVWR	GCWR	Approx. UVW	Approx. NCC
2001DSDP3851	300	4.63	100	252	12,000	17,000	29,000	34,000	22,658	6,342
2001DSDP3852	300	4.63	100	252	12,000	17,000	29,000	34,000	22,548	6,452
2001DSDP3858	300	4.63	100	252	12,000	17,000	29,000	34,000	22,624	6,376
2001DSDP3862	300	4.63	100	252	12,000	17,000	29,000	34,000	22,556	6,444
2001DSDP3868	300	4.63	100	252	12,000	17,000	29,000	34,000	22,554	6,446
2001DSDP3883	300	4.63	100	252	12,000	17,000	29,000	34,000	22,509	6,491
2001DSDP3891	300	4.63	100	252	12,000	17,000	29,000	34,000	23,071	5,929
2001DSDP3894	300	4.63	100	252	12,000	17,000	29,000	34,000	22,988	6,012
2001DSDP4057	330	4.63	150	276	12,000	19,000	31,000	36,000	24,446	6,454
2001DSDP4095	330	4.63	150	276	12,000	19,000	31,000	36,000	24,770	6,230

* LENGTHS, HEIGHTS, WIDTHS AND DRY WEIGHTS ARE APPROXIMATE. WEIGHT WILL VARY BASED ON OPTIONAL EQUIPMENT ADDED TO THE ABOVE BASE WEIGHT.

DON'T FORGET TO CHECK OUT THE NEWMAR KOUNTRY KLUB. ALL YOU NEED FOR ELIGIBILITY IS TO BE A PROUD OWNER OF ANY OF THE FINE NEWMAR RECREATIONAL VEHICLES.

WE INVITE YOU TO VISIT OUR STATE-OF-THE-ART PRODUCTION FACILITY IN NAPPANEE, INDIANA. PLANT TOURS ARE OFFERED AT 10:00 A.M. AND 1:00 P.M., MONDAY THROUGH FRIDAY.



NEWMAR QUALITY: A WAY OF LIFE

355 N. DELAWARE STREET
NAPPANEE, INDIANA 46550

PH: 219.773.7791 • WWW.NEWMARCORP.COM

PRICES, SPECIFICATIONS AND FLOORPLANS ARE SUBJECT TO CHANGE AT NEWMAR'S DISCRETION WITHOUT PRIOR WRITTEN NOTICE OR OBLIGATION. PLEASE SEE YOUR DEALER FOR ACTUAL SAMPLES AND SPECIFICATIONS. ©2000 NEWMAR CORPORATION. PRINTED IN THE U.S.A. (6/00)