



# FLOORPLANS Yellowstone 2002

• **CLASS A MOTOHOMES** •

---



• **DIESEL MODELS** •  
**FLOORPLANS & SPECIFICATIONS**

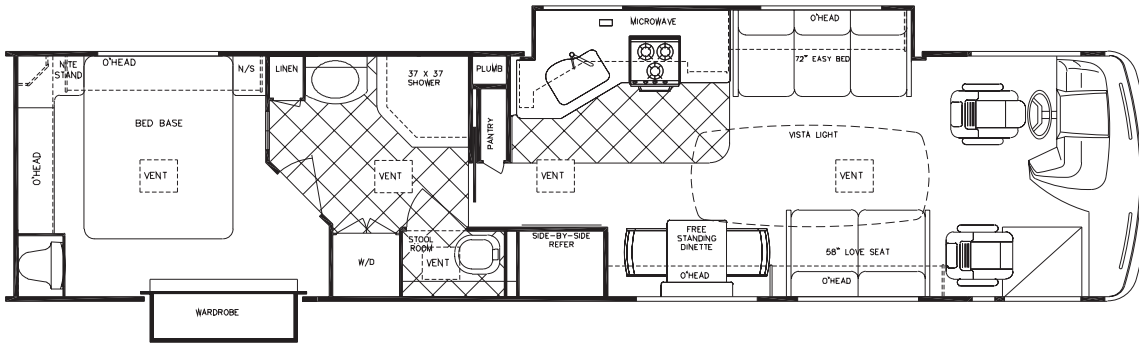
---





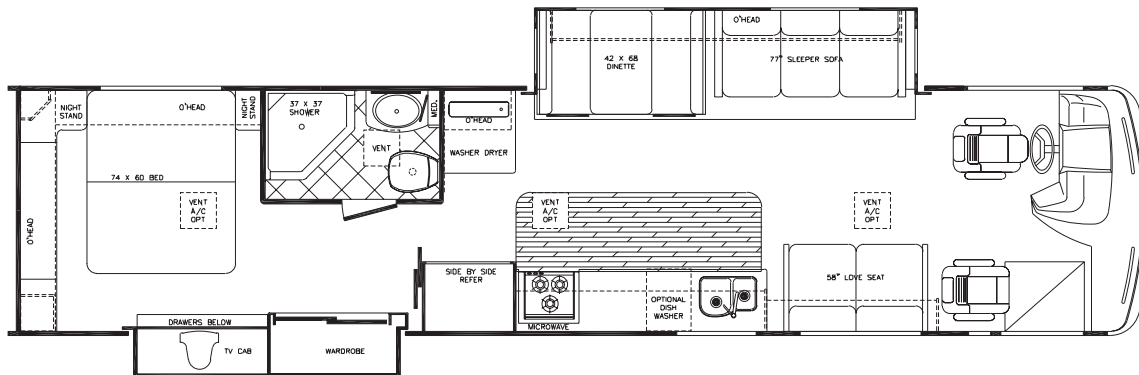
# FLOORPLANS Yellowstone 2002

## • CLASS A MOTOHOME



Engine	330
GVWR	29,000
Wheelbase	252"
Ext. Length	38'-8"
Ext. Height w/AC	12'-2"
Ext. Width	101"
Int. Height	80"
Int. Width	97"
Fresh	100 gal.
Grey	75 gal.
Black	75 gal.
Water Heater w/DSI	10 gal.
LP Gas Tanks	150 lbs.
Fuel Tank (Gal.)	100
Furnace (BTU's)	25,000/ 40,000

**Model 8401**



Engine	330
GVWR	29,000
Wheelbase	252"
Ext. Length	38'-8"
Ext. Height w/AC	12'-2"
Ext. Width	101"
Int. Height	80"
Int. Width	97"
Fresh	100 gal.
Grey	75 gal.
Black	75 gal.
Water Heater w/DSI	10 gal.
LP Gas Tanks	150 lbs.
Fuel Tank (Gal.)	100
Furnace (BTU's)	25,000/ 40,000

**Model 8407**

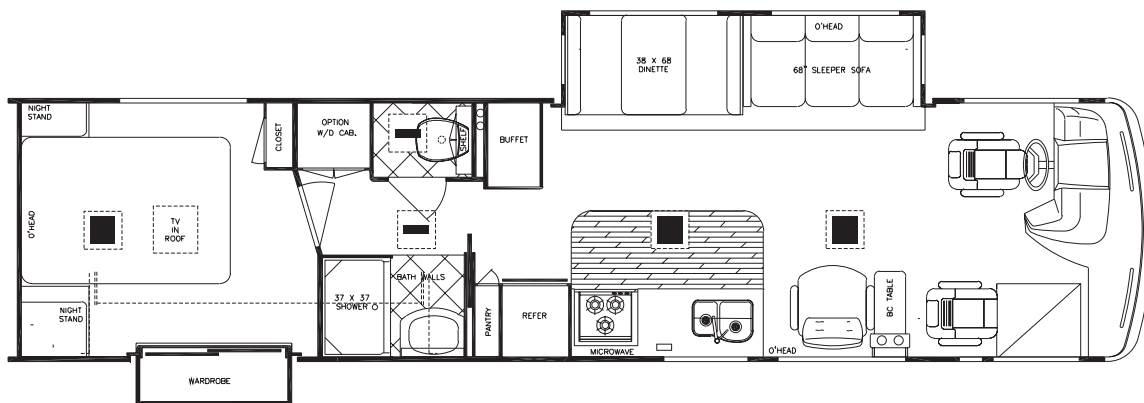


# FLOORPLANS

## Yellowstone 2002



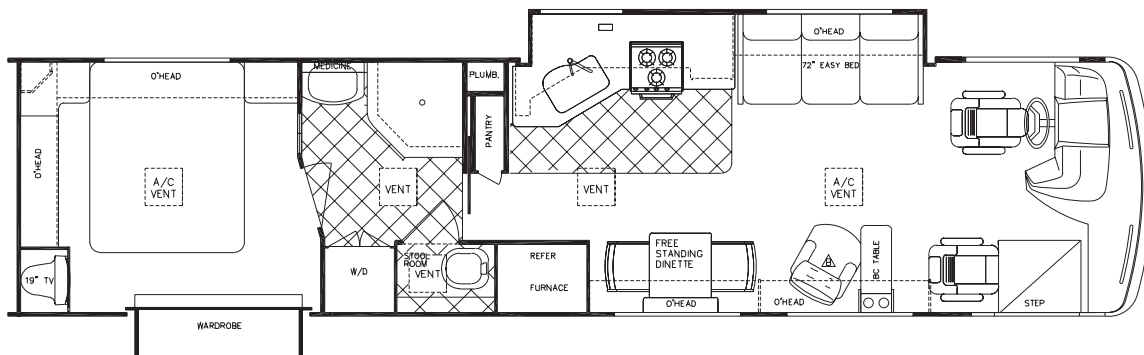
### ES • DIESEL MODELS •



#### Silver Edition

Engine	330
GVWR	27,910
Wheelbase	228"
Ext. Length	36'-4"
Ext. Height w/AC	12'-2"
Ext. Width	101"
Int. Height	80"
Int. Width	97"
Fresh	75 gal.
Grey	40 gal.
Black	40 gal.
Water Heater w/DSI	10 gal.
LP Gas Tanks	115 lbs.
Fuel Tank (Gal.)	100
Furnace (BTU's)	40,000

#### Model 8355



#### Silver Edition

Engine	330
GVWR	27,910
Wheelbase	234"
Ext. Length	36'-10"
Ext. Height w/AC	12'-2"
Ext. Width	101"
Int. Height	80"
Int. Width	97"
Fresh	75 gal.
Grey	40 gal.
Black	40 gal.
Water Heater w/DSI	10 gal.
LP Gas Tanks	150 lbs.
Fuel Tank (Gal.)	100
Furnace (BTU's)	40,000

#### Model 8362







# Yellowstone 2002

## • CLASS A MOTOHOMES •

### Interior & Decor

- Natural Oak Cabinet Doors
- 22" Metal Drawer Guides w/Nylon Rollers.
- Silverware Drawer and Drawer Front
- Residential Sized Cabinets and Overheads
- Windshield Privacy Drape
- Flexsteel Furniture
- 3-Way Driver & Passenger Seats
- Deluxe Carpet w/Pad
- Coordinated Bedspread & Pillow Shams
- Lighted Closets
- Decorator Mirror (where available)
- Generous Overhead Storage
- Day/Night Pleated Shades

### Appliances

- 3-Burner High-Performance Range
- Lighted Power Range Hood
- Double Door, 2-Way Refrigerator

### Bath & Water

- Demand Water System
- City Water Hook-Up
- Kitchen Sink Cover
- Residential Rectangular Shower (most models)
- Mirrored Medicine Cabinet
- Super-Flow Water Manifold System (8401, 8407 only)
- Deluxe Pedal Stool w/Sprayer
- Sky Dome Over Shower
- Glass Shower Enclosure

### Electrical Systems

- Easy-Access Dual Battery System
- 12-volt, 45-Amp Converter
- Electric Supply Cord
- Electric Overload Protection
- Automotive-Type, Color-Coded Wiring
- Lighted Entry & Aisle Lights
- Directional Reading/Map Lights
- Battery Disconnect
- Pre-Wire for VCR

### Exterior & Construction

- **"Cradle of Strength" Construction:**
  - Welded Steel Sub-Floor Truss System
  - 1-1/2" Tubular Metal Cage Construction on Sidewalls & Roof
  - Insulated Floors w/Virtually Seamless Weyerhaeuser Structurewood Decking
  - Vacuum-Bond Laminated 2" Thick Sidewall Construction w/Seamless Filon Fiberglass
- High-Density Block Foam Insulation Throughout Sidewalls, Roof & Floor
- Radiused Laminated Fiberglass Roof w/Tubular Metal Rafters
- Molded Roof Brick Insulation in Roof, Surrounding Ducted Roof A/C Vents
- Heated & Fully Enclosed Holding Tanks
- Automotive-Style Bumpers
- Deluxe Outside Mirrors
- Generous Pass-Through Basement Storage
- Hinged Exterior Storage Doors
- Exterior Storage Compartment Latches & Locks
- Fully Welded Steel Firewall
- Below Floor Storage Area's are Laminated with Galvanized Steel (not plastic)
- Deluxe Exterior Paint Graphics w/Tape Accent

### Heating, Ventilation & A/C

- Ducted Furnace w/Elect. Ignition (25,000/40,000 BTU's) (8401, 8407)
- Ducted Furnace w/Elect. Ignition (40,000 BTU's) (83551, 83627)
- Ducted Roof A/C

### Chassis

- Freightliner Custom Chassis, Catipillar 330 HP, Rear Radiator 860 ft. lb. Torque, Allison 6-Speed Electronically Shifted Automatic Transmission
- C-Channel Type, Raised-Rail Steel Chassis Frame
- Anti-Lock Brake System
- Air Brakes w/Pure Air Plus Heated Air Dryer (8401, 8407)
- Full Air-Ride Suspension w/Auto Leveling System
- Allison MD 3060P 6-Speed Electronically Shifted Automatic Transmission
- Alcoa Aluminum Wheels, 22.5 Radial Tires (8401, 8407)

### Deluxe Standard Features

- Auto Dash Air Conditioner
- Auto Cruise Control
- Stainless Steel Wheel Liners (Silver Edition)
- AM/FM CD w/4 Spkrs.
- Monitor Panel
- Stainless Steel Entry Handle
- Power Vent in Commode
- Converter w/Battery Charger
- Auxiliary Battery
- 25" Color TV in Front Overhead
- 19" Color TV in Bedroom (8362)
- 13" Color TV in Bedroom (8355)
- Carbon Monoxide Detector
- TV Antenna
- LP Gas Leak Detector
- Awning Rail
- Microwave Oven w/Built In Range Vent
- Flush Floor Slideouts

### Popular Options

- Convection Oven
- Dishwasher (8407)
- Washer/Dryer
- 10 Disc CD Changer
- Diesel Generator (Silver Edition)

# Yellowstone



POST OFFICE BOX 1005 NAPPANEE, IN 46550  
• YOUR DEALER •



VISIT  
[www.gulfstreamrv.com](http://www.gulfstreamrv.com)

FOR MORE DETAILED INFORMATION...  
OR CALL 1-800-765-8787 EXT. 3288

\* All weights and measures are approximate and subject to change without notice. For more information, contact your local dealer, [www.gulfstreamRV.com](http://www.gulfstreamRV.com) or Gulf Stream Coach, Inc.. Gulf Stream Coach, Inc. reserves the right to make changes in prices, colors, materials, components and specifications and to discontinue models at any time without notice or obligation. Gulf Stream Coach, Inc. assumes no responsibility for any error in type or print reproduction of specifications or floorplans in this brochure. Photographs may show equipment or items that are optional and are not included in the purchase price of each coach, fifth wheel or trailer. © Copyright 2001 Gulf Stream Coach, Inc. Nappanee, Indiana USA

07/01-SP-10k