

2004 **Meridian**[™]



THE NEW LOOK IN DIESEL

STEP INTO COMFORT

Winnebago Industries® is pleased to introduce the all-new 2004 Itasca Meridian. Diesel enthusiasts will appreciate the driving performance of the Freightliner® chassis, 6-speed Allison® electronic transmission and the standard trailer hitch with a 10,000-lb. towing capacity. Inside you'll find luxurious amenities such as a 24" flat-screen stereo TV, available DVD/VCR combo, BenchMark™ Full Comfort Dinette, solid-surface countertops and an available Sleep Number® bed by Select Comfort™.

Read on, and you'll see there is a lot to say about the new Itasca Meridian. Test drive one, and you'll have plenty to rave about, too.



▲ The BenchMark Full Comfort Dinette is our most comfortable dinette ever. The innerspring seat cushions flip up for easy access to the storage below and the whole dinette quickly converts into a comfortable bed.

Meridian™
2004



39W Greenwich Green with Portsmouth Oak

STOREMORE

▲ You'll feel right at home in the Meridian. Premium Stitchcraft furniture and user-friendly features create a welcoming atmosphere for relaxing and entertaining guests. Storage is plentiful with the StoreMore® slideout system, which enables interior cabinets and exterior compartments to move with the slideroom for easy access. The ceiling-ducted TrueAir® Residential Central Air Conditioning provides total comfort control. It includes a heat pump so you can take the chill off cool mornings without turning on the floor-ducted furnace. Dual-glazed/thermo-insulated windows increase thermal efficiency. They include day/night pleated shades that offer multiple levels of privacy.

▼ Interior climate control has never been more precise, thanks to the TrueAir Residential Central Air Conditioning from Winnebago Industries. It utilizes the superior cooling technology of a Coleman®-Mach® cooling unit to supply optimum comfort to every part of the coach. Its basement location provides a low vehicle profile and center of gravity. Plus, it reduces interior noise and is easy to service. On cool days, the heat pump provides warmth, minimizing the need to use the LP furnace.



Interior Decors



Greenwich Green



Provence Blue



Stonehenge Taupe



Concert Cherry



Portsmouth Oak



Washed Maple



▲ **You'll enjoy cooking in the full-featured galley.** The 30" microwave with vented range hood has a sensor cook feature for simplified meal preparation. Solid-surface countertops with sink covers provide plenty of work-space, while a single-control faucet with a pullout sprayer makes cleanups easy. Both the standard two-door and available four-door refrigerator/freezer (shown here) have wood veneer panels to match the cabinetry and can be upgraded with an available icemaker. Vinyl tile floorcovering adds to the galley's residential feel.

WELL-APPOINTED INTERIORS



◀ **The banquette is a great place to relax** and makes an elegant addition to the Meridian's interior. (Available on the 34H, 36G and 39W)



▲ **The available washer/dryer** features multiple wash, time and temperature cycles to accommodate most fabrics. (NA 32T)



▲ **Select the available dining table** for an elegant two-person dining area that expands to accommodate guests. (NA 32T)

◀ **The hoop-base reclining chair** is both a cozy rocker and a comfortable recliner with footrest. It moves easily to your favorite spot when you're not on the road.



▼ **The available multi-function table** provides comfortable dining for two, expands to seat four, and can be used as a computer table or additional workstation. (NA 32T)





▲ **The entertainment center in the Meridian rivals those in most upscale homes.** It starts with a 24" flat-screen Sony® stereo TV, amplified antenna and video selection system. You can also add a combination DVD/VCR player, digital satellite dish and Deluxe Sound System with 5-channel QSURROUND™. A 300 watt inverter allows you to use the entertainment center and the bedroom TV with 12-volt DC power. Additional 110-volt appliances can be powered by the coach batteries when you select the available 2,000 watt inverter/charger.



▲ **You're in command behind the cockpit-style dash** that places precision driving controls at your fingertips, including the simplified touch pad transmission controls. The steering wheel is sized for responsive handling and includes tilt and telescoping functions for perfect positioning. Other conveniences include an electronic compass/thermometer and available powered sunvisors.



▲ **The available TripTek™ computer** collects, analyzes and saves vehicle data while displaying trip information on the Sony, color rearview monitor. Data includes: miles and time to destination, time traveled, fuel economy and a pre-trip checklist.

RELAX AND UNWIND

▼ **The Rest Easy® Multi-Position Lounge provides unmatched flexibility and comfort.**



1. It starts as a plush couch with a flip-down center cushion that contains a beverage tray and storage compartment.



2. At the touch of a button, it becomes a relaxing recliner with a pullout ottoman.



3. Touch the button again and it's a contoured 75" x 60" bed. Available upgrades include UltraLeather HP™ and dual controls.



▲ **Every Meridian bedroom features a standard slideout.** It provides plenty of space for a walk-around, queen-size bed with a standard Serta® mattress. There's also plenty of storage with a built-in wardrobe, large drawers and an underbed storage compartment (NA 39W). A 19" TV is mounted high in the corner for optimal viewing from the bed. Windows on both sides of the room provide excellent cross-ventilation.



◀ **The bedroom can be upgraded** to include a Sleep Number bed by Select Comfort. A hand-held remote on each side of the bed lets you quickly and independently adjust the mattress firmness to your ideal level of comfort and support...your Sleep Number, which is The Key to a Perfect Night's Sleep!™



◀ **A Black and Decker® rechargeable flashlight** and a cordless vacuum come in handy in a pinch.

▶ **A skylight lends a spacious feel to the bath area.** Upscale features include a residential-height toilet, recessed sink, dual-control brass faucet and solid-surface countertops. Moen® Posi-Temp® maintains a consistent shower temperature, even if overall water pressure fluctuates. The available shower package includes a fold-down shower seat and a hand-held showerhead. A hamper is standard on the 32T and 34H.



▶ **A wall-mounted hair dryer** with night-light is located in the bathroom for your convenience.



▲ **Itasca owners continue to rave about the RV Radio®.** They love the bigger buttons, AM/FM stereo radio, weather-band, cassette deck and CD player. You can even upgrade to the multi-disc changer with remote for more variety.



ONEPLACE
systems center

◀ **The OnePlace™ Systems Center** brings important and frequently used switches, gauges and controls into one central location. It's illuminated by an overhead courtesy light.

SIRIUS 

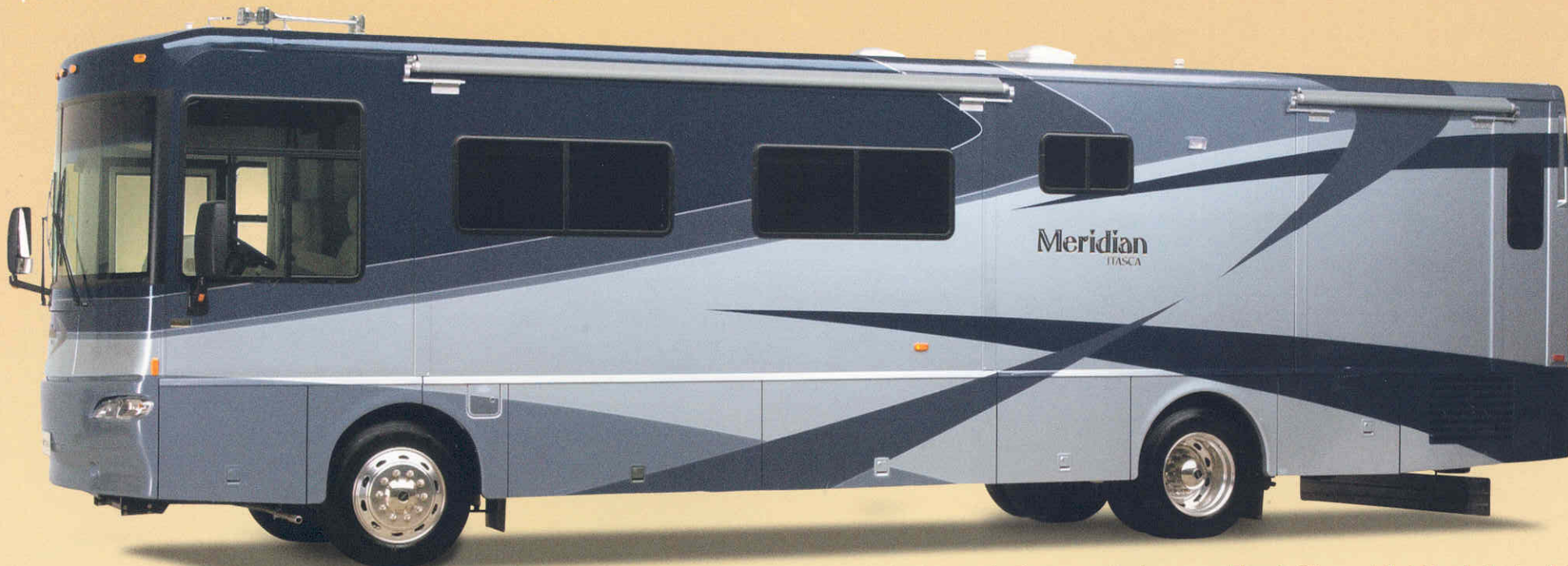
Upgrade your listening choices with Sirius® Satellite Radio programming (requires the satellite-ready radio, available fall 2003). It offers 100 channels of digital entertainment. High altitude satellites deliver crystal-clear satellite programming anywhere in the U.S. with no signal fades. (Sirius Satellite Radio programming requires a subscription.)

◀ **Keep your electrical systems running smoothly** even when operating the central air conditioning on 30-amp. shoreline power. The PowerLine® Energy Management System monitors electrical usage and cycles secondary appliances off during periods of heavy demand to prevent tripping campground circuit breakers. Power is automatically restored to all appliances and systems when demand is lowered.

POWERLINE®



When purchasing a new motor home, you may think that a chassis is a chassis. But the chassis your RV is built on has a crucial impact on your overall experience. When it comes to a chassis, the manufacturer's history of design innovation with a proven track record of performance and a nationwide service network are significant factors to consider.



▼ **Stylized aluminum wheels** are standard to give your coach a distinguished appearance.

▲ **The air filter and fluid level checkpoints** are located in convenient, easy-reach locations.

► **Listen to your favorite music** as you relax under the awning with the exterior entertainment center. This standard feature includes: two speakers, AM/FM stereo radio, CD player, 12-volt powerpoint, TV jack and a patio table.



▼ **An auxiliary air connection** with a detachable 50' hose provides a ready source of compressed air.



► **StoreMore is the smarter way to store your gear.** It features large, well-lit compartments that are designed to accommodate bulky and odd-shaped items. Best of all, these compartments move with the slideroom for easy access without crawling on your hands and knees. Gas struts and single-paddle latches allow doors to open easily.

▲ **Draining air-line system condensation** is a recommended service procedure for all vehicles with air brakes and air suspension. The Meridian has automatic system dryers with lanyard controls so you'll never have to crawl under the chassis to perform this routine maintenance function.





▲ **The rear air suspension** makes you feel like you're floating on air. Large air springs are placed in a wide-track stance just inboard of the rear wheels. More efficient than multi-bag systems, it offers optimum stability while protecting air springs from road debris.



◀ **Rugged diesel engines with electronic controls** provide exceptional torque and fuel economy. A 330-hp 7.2L Caterpillar® turbo-diesel engine (shown) is standard on all models except the 32T, which features a 300-hp 5.9L Cummins® turbo-diesel engine. A 330-hp 8.3L Cummins turbo-diesel engine is also available for more robust power (39W only). The standard engine exhaust brake enables you to use the engine to slow the vehicle, promoting longer brake life.

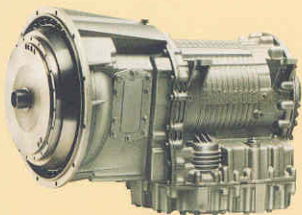


▼ **Open almost anything with one key**, thanks to the innovative KeyOne™ System. A single key, which can be inserted with either side up, opens most exterior compartments and doors so you won't have to fumble through a pocketful of keys to find the one you want.



▲ **RVers are falling in love with two-way radios** and now they're available with every Meridian. The set of four multi-channel radios recharges from the coach batteries using the built-in charging station. Nickel metal hydride batteries provide up to 15 hours of standby time and 90 minutes of talk time on a single charge.

THE POWER OF DIESEL

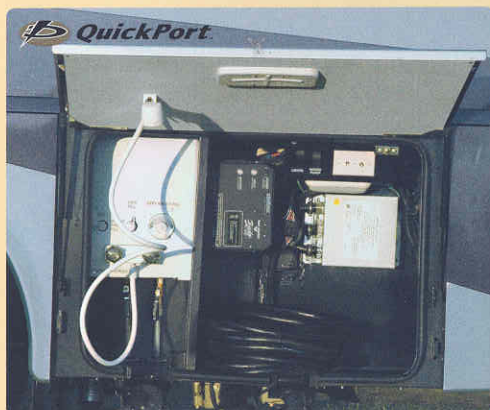


◀ **The 3000 MH 6-speed Allison®**

electronic-control transmission is a proven performer. Smart Logic enables it to learn your driving habits and fine-tune shifting points accordingly for maximum performance.



▲ **Anti-lock air brakes** deliver safety and control in all conditions. Enjoy maximum brake feel and control thanks to the treadle brake pedal mounted solidly to the steel cab deck.



▲ **The user-friendly service center** has clearly labeled controls and features a QuickPort™ Service Connection Hatch for hoses and cords so hookups are a snap. The exterior wash station is handy for rinsing off equipment or sandy feet. A 50-amp. power cord is also included.



◀ **The sewer hose includes** a QuickConnect™ coupling valve for quick and easy hookups.



▼ **Exterior mirrors have convex and flat surfaces** for an expanded viewing range. The driver's side mirror features a breakaway design and both mirrors incorporate a turn signal as a courtesy to those around you.



◀ **Bring your own power** with an LP-powered, 6,500 watt Onan® Marquis Gold™ generator or an available 7,500 watt Onan Quiet Diesel™ generator (shown here).

FLOORPLANS

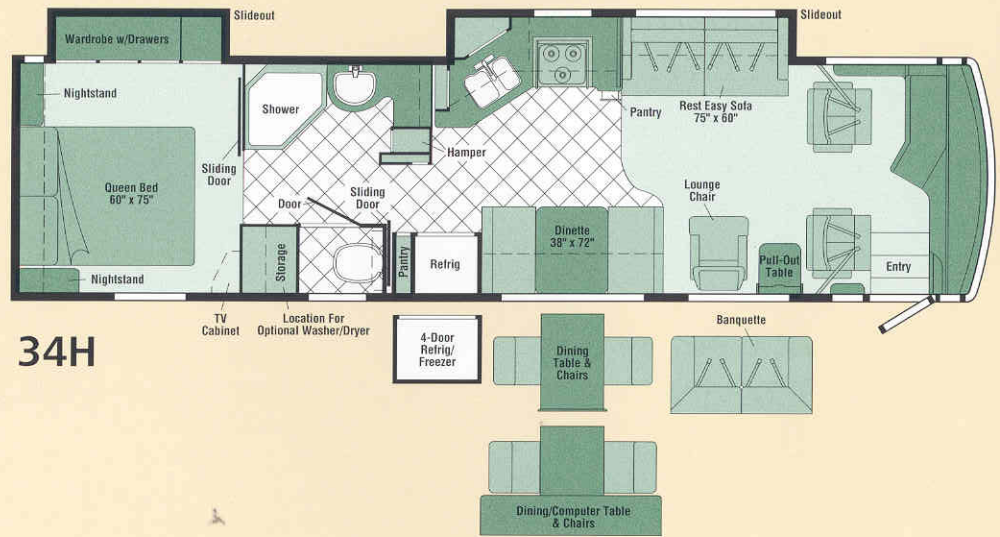


Vinyl Tile Floorcovering

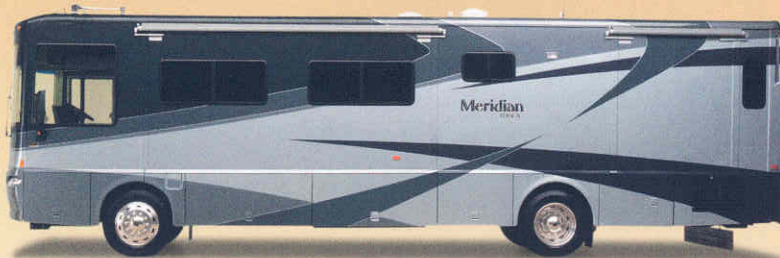


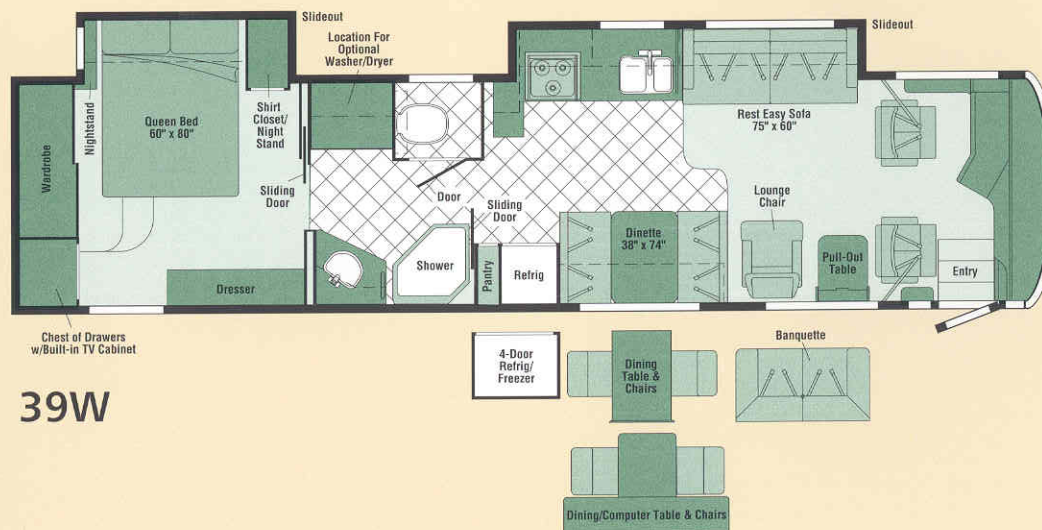
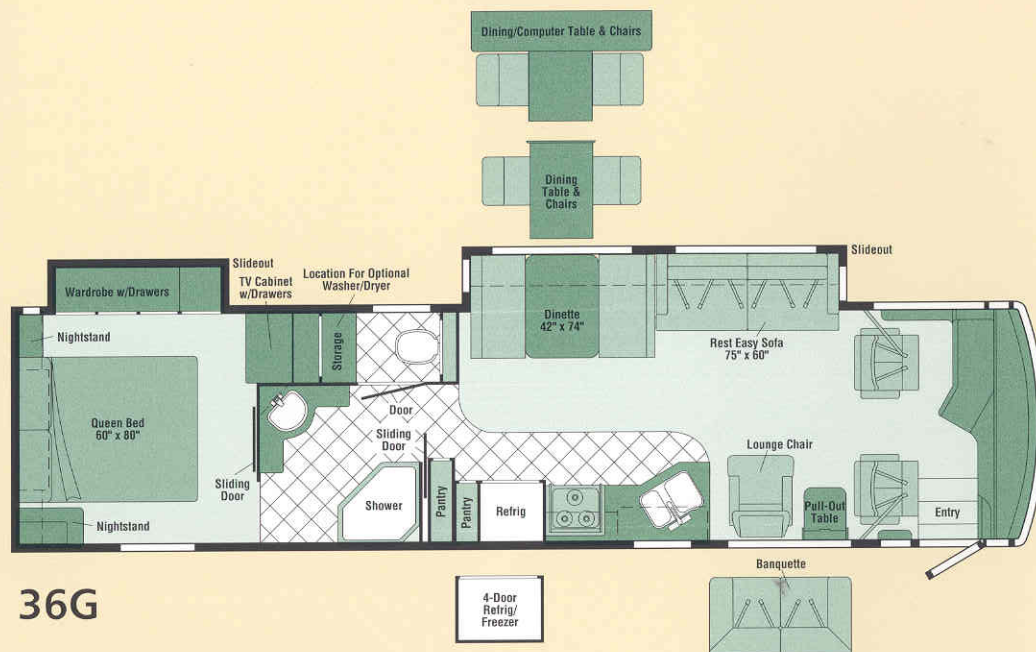
Seat Belts

Note: Dimensions shown are for sleeping space only and may vary due to styling differences. Dashed lines denote overhead storage areas.



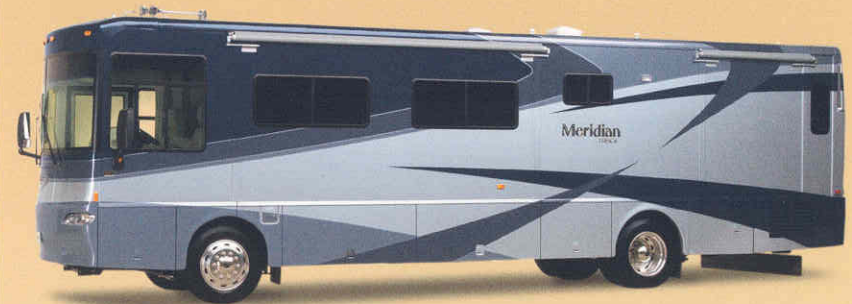
Meridian's one-piece sidewalls are amazingly tough—something you might expect from Winnebago Industries. Standard features include hydraulic jacks with touch pad controls to keep your Meridian stable and level when parked, and stylized aluminum wheels to resist corrosion. A full-width mudguard with the Itasca logo is also available.





Full-Body Exterior Color Themes

You're sure to get noticed when you pull into a campsite driving a 2004 Itasca Meridian. The full-body paint on every Meridian gives it a style all its own.



Arctic Dusk



Silver Frost



Stonehenge

SPECIFICATIONS

Chassis Information	32T	34H	36G	39W
Length	32'8"	34'9"	36'5"	39'4"
Exterior Height ¹	11'2"	11'6"	11'5"	11'4"
Exterior Width ²	8'5.5"	8'5.5"	8'5.5"	8'5.5"
Exterior Storage ³ (cu. ft.)	80	90	108	145
Interior Height	6'8"	6'8"	6'8"	6'8"
Interior Width	8'0.5"	8'0.5"	8'0.5"	8'0.5"
Fresh Water Capacity w/Heater – (gal.)	96	96	96	96
Holding Tank Capacity – Black / Gray (gal.)	52 / 42	48 / 52	52 / 48	52 / 48
LP Capacity ⁴ (gal.)	39	39	39	39
Fuel Capacity – F / W (gal.)	90 / NA	90 / NA	90 / NA	90 / 100
GCWR – F / W ⁶ (lbs.)	37,910 / NA	37,910 / NA	37,910 / NA	37,910 / 39,500
GVWR – F / W (lbs.)	27,910 / NA	27,910 / NA	27,910 / NA	27,910 / 29,500
GAWR – F / W – Front (lbs.)	10,410 / NA	10,410 / NA	10,410 / NA	10,410 / 10,500
GAWR – F / W – Rear (lbs.)	17,500 / NA	17,500 / NA	17,500 / NA	17,500 / 19,000
Wheelbase – F / W	190"	208"	228"	262"
F Freightliner®				W Workhorse™

Standards & Options

32T	34H	36G	39W	Automotive/Chassis
S				Chassis – Freightliner®, Cummins® ISB 5.9L turbo-charged diesel 300-hp, rear radiator, Allison® 6-speed electronic 2,000 MH transmission, NeWay® front and rear air suspension, 130-amp. alternator, exhaust brake, four-wheel ABS
S S S				Chassis – Freightliner®, Caterpillar® 7.2L turbo-charged diesel 330-hp, rear radiator, Allison® 6-speed electronic 3,000 MH transmission, NeWay® front and rear air suspension, 160-amp. alternator, exhaust brake, four-wheel ABS
O				Chassis – Workhorse™ (available January 2004), Cummins 8.3L 330-hp, rear radiator, 3,000 MH 6-speed transmission, 200-amp. alternator, Arvin Meritor air suspension, four-wheel ABS, exhaust brake, Smart Wheel steering wheel
S S S S				Air Accessory Manifold quick connect, 50' air hose, pressure gauge, manual air shut off, Leveling Jacks HWH® hydraulic, manual control, Tire Tools wrench & leverage bar, Trailer Hitch ® 10,000-lbs. draw bar/500-lbs. maximum vertical tongue weight & wiring, Wheels stylized aluminum

32T	34H	36G	39W	Cab Area & Driver Conveniences
S S S S				Cab Seats (fabric) w/3-point adjustable seat belts, armrests, lumbar support, multi-adjustable slide/recline & swivel, Compass electronic w/outdoor thermometer, Console Center Cabinet , Cruise Control , Defroster Fans (2) auxiliary 2-speed w/instrument panel switch, Exhaust Brake Switch , Floor Mat carpet, Hood Release , Map Lights , Power Door Locks keyless entry w/remote, Powerpoints (2) 12-volt, Shades light filtering, cab windows, Steering Wheel tilt w/power assist, Sunvisors (2), Window (driver) full slider w/screen, dual-glazed thermo-insulated, Window (passenger) partial slider w/screen, dual-glazed/thermo-insulated, Windshield Wipers intermittent

32T	34H	36G	39W	Cab Area & Driver Conveniences (cont.)
O O O O				Cab Seat ® 6-way power assist (driver)
O O O O				Cab Seats ® 6-way power assist (driver & passenger)
O O O O				Cab Seats (UltraLeather HP™)
O O O O				Cab Seat ® passenger seat w/footrest
O O O O				GPS Navigation System (available Fall 2003)
O O O O				Monitor System rearview color w/single camera & 1-way audio, Sony®
O O O O				Sunvisors (2) powered
O O O O				Trip Computer TripTek™

32T	34H	36G	39W	Entertainment
S S S S				CB Prep antenna, antenna lead, 12-volt power supply, Entertainment Center (Exterior) w/CD Player DC receptacle, AC duplex receptacle, AM/FM radio w/remote, TV jack, radio antenna, speakers (2), table, lockable compartment, Radio Power Switch main/auxiliary battery, RV-RADIO (Cab) AM/FM stereo cassette/CD, weatherband, remote, roof-mounted flexible rubber antenna, speakers (4), Satellite System Ready , Telephone input & interior jacks, TV 19" Color AC w/remote, bedroom, TV 24" Color AC Stereo w/flat-screen, Sony® TV Enhancement Package antenna (amplified), interior jack(s), coax wiring, cable input, exterior jack, reminder light, Video Selection System
O O O O				Compact Multi-Disc Changer w/remote
O O O O				DVD/VCR Player ®
O O O O				Radios (4) 2-way

32T	34H	36G	39W	Entertainment (cont.)
O O O O				Satellite RV digital , manual, elevation sensing unit
O O O O				Satellite Dish Antenna RV digital, power
O O O O				Satellite Radio (available Fall 2003), Sirius®
O O O O				Satellite System RV digital, in-motion
O O O O				Sound System Deluxe, w/5-channel QSURROUND™ sound, amplifier, cube speakers (5), bass speakers (2)




32T	34H	36G	39W	Interior
S S S S				Accessory Package rechargeable flashlight, rechargeable hand-held vacuum cleaner, Ceiling fabric, Shade front wraparound, pleated w/wands, Lights ceiling w/wall switches, incandescent, Light decorative dinette, Lights fluorescent lights, recessed, galley, dinette, lounge w/2-way wall switches, Lights reading, auxiliary, Mini Blinds galley & bath area, Roof Vent Shade Package , Shades pleated, day/night, lounge, dinette and bedroom areas, Sliding Stepwell Cover Panel powered, Windows dual-glazed/thermo-insulated
O O O				Ceiling Fan
S S				Cupholder(s)
S S				Mirror
S S S				Picture(s)

32T	34H	36G	39W	Cabinetry
O O O O				Concert Cherry stile-and-rail construction w/arched, raised-panel inserts on upper doors & raised-panel inserts on lower doors
O O O O				Portsmouth Oak stile-and-rail construction w/arched, raised-panel inserts on upper doors & raised-panel inserts on lower doors
O O O O				Washed Maple stile-and-rail construction w/arched, raised-panel inserts on upper doors & raised-panel inserts on lower doors

32T	34H	36G	39W	Countertops
S S S S				Solid-Surface galley & bath

32T	34H	36G	39W	Floorcovering
S S S S				Carpeting w/pad, Vinyl Tile galley & bath

32T	34H	36G	39W	Furniture
S S S S				Full Comfort Dinette (fabric) w/access to storage below
S S S S				Multi-Position Lounge ® w/throw pillow(s)
O O O				Banquette ® (Fabric) w/throw pillows
O O O				Banquette ® (UltraLeather HP™) w/throw pillows
O				Chair Lounge (Fabric) hoop-base w/end table & slideout top
S S S				Chair Lounge (Fabric) hoop-base w/magazine rack & cabinet w/table
O O O O				Chair Lounge (UltraLeather HP™) hoop-base
O O O				Dining Table & chairs (2) free standing, (2) folding
O O O				Dining/Computer Table & chairs (2) free standing, (2) folding

32T	34H	36G	39W	Furniture (cont.)	
0	0	0	0	 Multi-Position Lounge³ (Fabric)	w/dual recliners
0	0	0	0	 Multi-Position Lounge³ (UltraLeather HP[™])	w/dual recliners
0	0	0	0	 Multi-Position Lounge³ (UltraLeather HP[™])	

32T	34H	36G	39W	Galley	
S	S	S	S	Coffeemaker, Faucet single-control w/pullout sprayer, Moen® Light fluorescent under cabinet, Microwave Oven w/Range Fan exterior vent, residential 30", Sharp®, Mirror(s) , Pantry ³ slideout, Range Cover flush-mounted, bi-fold (countertop material), Range 3- burner w/large oven, glass door w/storage below, recessed, sealed burners, Amana®, Refrigerator/Freezer large double-door, Norcold® Roof Vent powered ventilator fan, insulated, Silverware Tray , Sink double, molded, w/sink covers (countertop material), Towel Rack wire, Wastepaper Basket , Water Purification System Everpure®	
			S	Appliance Storage Cabinet	
			S	Countertop Extension flip-up	
			S	Cutting Board slide-out	
S	S			Glass Partition	
0	0	0	0	Microwave/Convention Oven w/range fan, residential 30", Sharp®	
0	0	0	0	Range Top 3-burner w/storage below, recessed, sealed burners, Amana®	
0	0	0	0	Refrigerator/Freezer ³ 4-door w/icemaker, Norcold®	
0	0	0	0	Refrigerator/Freezer large double-door w/icemaker, Norcold®	
		S	S	Spice Rack	
S	S		S	Utility Tray tip-out	
S				Wall Border	

32T	34H	36G	39W	Bath	
S	S	S	S	Cabinet lavatory, Cabinet linen, Faucet (lavatory) dual-control, Moen® Faucet (shower) single-control, fixed showerhead w/Posi-Temp® Hair Dryer wall-mounted w/night-light, Light shower, Lights make-up, Robe Hook , Roof Vent , insulated, power, Shower w/wall surround, Shower Door textured glass, Skylight , Sink oval, Tissue Holder , Toilet porcelain, w/foot-pedal flush, Towel Rack 3-rod, Towel Ring	
0	0	0	0	Fold-down Shower Seat , Hand-held Showerhead	
S	S			Hamper tip-out	
		S		Magazine Rack	
S	S	S		Medicine Cabinet	
	S	S		Mirror(s)	
	S	S		Towel Bar	
	S	S	S	Chair Rail	

32T	34H	36G	39W	Bedroom	
S	S	S	S	Alarm Clock , Bed queen, Serta [®] innerspring w/underbed storage (NA 39W), Bedsprad , Pillows , Throw Pillows , Headboard , Ceiling Molding , Lights reading, Light decorative ceiling light w/dimmer, Light decorative wall lamp(s), Mirror , Nightstand(s) , Powerpoint 12-volt receptacle, Wainscoting w/chair rail, Wardrobe Cabinet carpeted floor, clothes rod, drawers, light, cedar-lined	
0	0	0	0	Sleep Number[®] queen-size mattress by Select Comfort [™]	

32T	34H	36G	39W	Exterior
S	S	S	S	Awning³ patio, entrance door, electric, Awning Rails w/rain gutters, Door entrance w/separate screen door with logo, deadbolt lock, Entrance Door Step single, electric w/doorjamb switch, Full Body Paint Packages Arctic Dusk or Silver Frost or Stonehenge, Ladder , Lights fog lamps, Light porch w/interior switch, Light under hood, Lights docking lamps, Light service, driver side, Locking Fuel-fill Door , Mirrors electric remote w/defrost, break-away (driver) & turn-signal light, Mud Flaps(2) rear, Receptacle AC duplex, Sidewall Skin 1-piece smooth fiberglass, high-gloss, Storage Compartments smooth valance panels, trunk liner, gas cylinders, TriMark [®] KeyOne [®] System, paddle latch, lights

0	0	0	0	Air Horns roof-mounted	
0	0	0	0	Awning³ windows	
0	0	0	0	Compartment Tray slide-out	
0	0	0	0	Front Exterior Protective Mask	
0	0	0	0	Mud Guard full width, rear	
0	0	0	0	Undercoating	

32T	34H	36G	39W	Systems	
S	S	S	S	<p>Automotive Heater/Air Conditioner, Auxiliary Start Circuit, Batteries (Coach) (2)³ deep cycle, Battery (Coach) disconnect system, Battery Charge Control automatic dual, TRUEAIR[™] Residential Central Air Conditioning System, Central Air Heat Pump, Drain 1 1/2" water tank, Electrical Distribution System AC & DC breaker panels, 55-amp. electronic converter/charger,³ Electrical System Display Center, Generator 6,500 watt, Onan[®] Marquis Gold[™], LP, Generator/Shoreline Automatic Changeover Switch, Inverter³ DC/AC, 300 watt, ONEPLACE[™] Systems Center wall-mount, courtesy light, battery digital voltmeter, POWERLINE[®] (energy management display) generator hourmeter gauge, generator start/stop switch, heating/A/C thermostat, holding tank levels, LP tank level, solar panel/battery charger light, water heater switch, water heater on light & pilot indicator light, water pump switch, water tank level, Power Cord 50-amp., POWERLINE[®] Energy Management System, Service Compartment (Drainage) drainage valves, holding tank flushing system, 10' sewer hose w/Quick Connect coupling valve, QuickPort service connection hatch, Service Compartment (Electrical/Water) cable inputs, city water diverter fill, drain for fresh water system, exterior wash station w/pump switch, paper towel holder, soap bottle holder, power cord, shoreline/generator automatic changeover switch, telephone input, Solar Panel 10 watt battery charger, Tank flushing system, black tank only, Tank holding, heated compartment, Tank LP, permanent mount w/gauge, Water Heater 10-gallon electronic ignition, LP gas/120 vac w/Motoraid, Water Hookup city, Wash Station exterior, Water Pump variable speed, demand, Water Tank Fill pressurized city hookup w/diverter valve, Water Tank Fill w/locking door compartment, Tank LP, permanent mount w/gauge, Water System Winterization Package water heater bypass valve & siphon tube</p>	

S				Furnace 35,000 BTU, low profile	
S	S	S		Furnace 40,000 BTU, low profile	
0	0	0	0	Generator 7,500 watt, Onan [®] Quiet Diesel [™]	
0	0	0	0	Inverter/Charger³ DC/AC, 2,000 watt w/remote panel	
S	S	S		Washer/Dryer Prep	
0	0	0		Washer/Dryer Combination	

32T	34H	36G	39W	Slideout	
		S		Slideout Room bed w/slideroom cover	
S	S	S		Slideout Room wardrobe w/slideroom cover	
		S		 Slideout Room sofa/dinette w/slideroom cover	
		S	S	 Slideout Room sofa/galley w/slideroom cover	
S				 Slideout Room refrigerator/dinette w/slideroom cover	

32T	34H	36G	39W	Safety
S	S	S	S	Assist Bar(s) interior, Assist Handle exterior, acrylic, w/logo, Bumpers front & rear, Detectors/Alarms LP leak, smoke, carbon monoxide, Fire Extinguisher 10 B.C., Ground Fault Interrupter , Light center high-mount brake lamp, Light(s) courtesy w/wall switch(es), Seat Belts cab, 3-point, Seat Belts lap (in selected areas), Window escape, Windshield laminated safety glass

32T	34H	36G	39W	Warranty ⁷	
S	S	S	S	12-month/15,000-mile basic limited warranty⁸ , 36-month/36,000-mile warranty on structure⁸ , 10-year limited parts & labor warranty on roof skin⁸	

- The height of each model is based on the curb weight of a typically equipped unit on the standard chassis. The actual height of your vehicle may vary by as much as 2" depending on chassis or equipment variations.
 - Meridian floorplans feature a wide-body design — over 96". In making your purchase decision, you should be aware that some states restrict access on some or all state roads to 96" in body width. Before making your purchase decision, you should confirm the road usage laws in the states of interest to you.
 - Not all items available in combination. See dealer for details.
 - Capacities shown are tank manufacturer's listed water capacity (W.C.). Actual filled LP capacity is 80% of listing due to overfilling prevention device on tank.
 - Your motor home's load capacity is designated by weight, not by volume, so you cannot necessarily use all available space when loading your motor home.
 - Actual towing capacity is dependent on your particular loading and towing circumstances which includes the GVWR, GAWR and GCWR as well as adequate trailer brakes. Please refer to your vehicle's operator's manual for further towing information.
 - See separate chassis warranty details provided in owner's packet.
 - See your dealer for complete warranty information.
- NA Not Available
S Standard
O Optional

Winnebago Industries[®] continuing program of product improvement makes specifications, equipment, model availability and prices subject to change without notice. Comparisons to other motor homes are based on the most recent information available.

Not all motor homes are created equal. SuperStructure® is the term given to Winnebago Industries' structural motor home design and construction. Rather than a single component, it is the culmination of design integration that incorporates steel and aluminum substructures, composite-design laminated floor risers, interlocking joint technology and Thermo-Panel® floor, roof and sidewalls to form an incredibly strong, durable vehicle body.

Laminated risers feature a welded aluminum core for superior strength and provide a stable base for the floor structure and storage compartments.

Critical steel components are treated using an advanced electrodeposition coating process that provides superior corrosion protection.

The foundation substructure assembly is precision-aligned to maximize longitudinal and cross-coach support, as well as strength and durability.



◀ **Interlocking joint construction** utilizes advanced aluminum structural components to create integrated floor-to-sidewall and sidewall-to-roof joints. This design effectively distributes the weight of the walls and roof, making a stronger and more durable body than competitor designs that require screws to carry the weight.



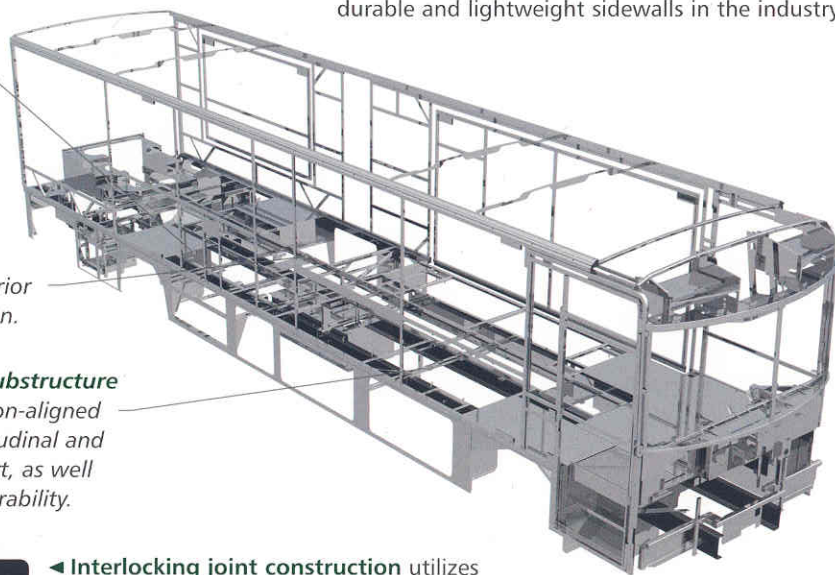
1-year old Itasca fiberglass roof



1-year old competitor's rubber roof

◀ **Built to a higher standard.** The Meridian features a crowned, one-piece fiberglass roof, backed with a 10-year limited parts-and-labor roof skin warranty. Fiberglass offers superior strength, attractiveness and durability over the rubber roofs found on many competitive models which can chalk, streak and degrade over time. Fiberglass also provides increased puncture and tear resistance.

We invented Thermo-Panel sidewall construction and, over the years, have perfected this innovative composite construction process. It combines an exterior fiberglass panel, high-density block foam insulation and welded aluminum support structures to create some of the strongest, most durable and lightweight sidewalls in the industry.



Committed to service. We back our motor homes with the industry's best service after the sale.



TRIP Saver
FAST TRACK PARTS

- 12-month/15,000-mile basic limited warranty
- 36-month/36,000-mile warranty on structure
- Standard 10-year limited parts-and-labor roof skin warranty
- Complimentary 24-hour roadside assistance program
- TripSaver Fast Track Parts. TripSaver guarantees that in-stock warranty parts ship directly to your dealer within 24 hours.
- National dealer service network



Recognized quality. Recreation Vehicle Dealer Association members annually rate RV manufacturers on the quality of their products, and sales and service support. Winnebago Industries has achieved the coveted Quality Circle award every year since its inception, the only RV manufacturer to do so.



All motor homes are not created equal. Learn more about what sets Winnebago Industries apart. Ask your dealer for this guide. It will help you learn what makes Winnebago Industries motor homes distinctly superior to other brands.



WARNING: Joining WIT has been known to cause excessive fun. Winnebago-Itasca Travelers (WIT) is a club for owners of Winnebago Industries motor homes. WIT is a great way to meet people and offers you:

- Caravans and rallies
- Local and state group activities
- RV travel benefits

winnebagoind.com
NYSE listing: WGO

For Sales and Service Information Contact:



©2003 Winnebago Industries, Inc.



Printed in USA

Seat belts are your most important hookup. Always buckle up.