

Georgetown

by Forest River

GT XL WITH OPTIONAL ESPRESSO FULL BODY PAINT



ISN'T IT ABOUT TIME?



The 2008 Model Year brings a brand new interior concept to your travels.

The Georgetown "Dream Kitchen" makes elegance an affordable reality. Stainless steel, solid surface and halogen lighting. Features once reserved for high end residential homes arrive with your Georgetown.

Shown right is the incredible 378 with the optional XL package. The 32" LCD HD TV, home theatre and fireplace bring warmth and comfort to your travels.

Georgetown

by Forest River



MODEL 378's "DREAM KITCHEN"



OPTIONAL 4-DOOR REFRIGERATOR
WITH IN DOOR WATER DISPENSER
(N/A ALL MODELS)



MODEL 378 IN CHERRY AND BIRCH



MODEL 378 IN CHERRY AND BIRCH DECOR



Go ahead. Indulge yourself. This master suite comes complete with LCD TV, abundant storage and a spacious master bath. No wonder the 378 sets the standard for life on the road. The master bath features Corian edge countertops, faux marble sink and shower (with seat): Plus an upgrade lighting package (XL Option Package)

INTERIOR DECOR OPTIONS AVAILABLE ON ALL MODELS

HAZELNUT



BIRCH



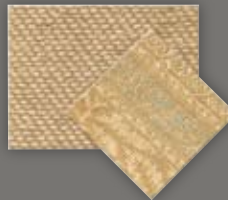
BLUE



CASHMERE



BARLEY



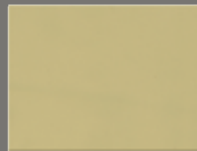
BLACK & TAN



MAHOGANY



SOFT TOUCH
LEATHERETTE



A.

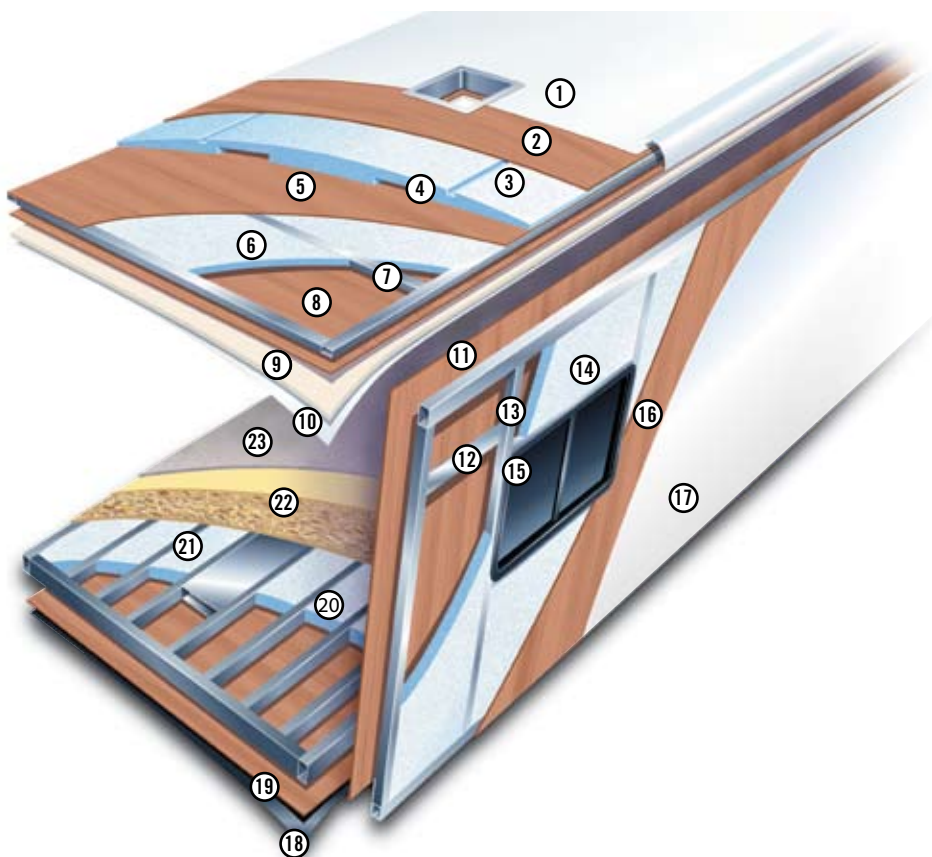


B.

A. GLAZED CHERRY

B. GLAZED MAPLE

GEORGETOWN CONSTRUCTION



MULTI-LAYERED LAMINATED ROOF SYSTEM

(Total roof thickness 5")

1. Seamless fiberglass roof
2. Luan Decking
3. 3.5" Block foam insulation
4. Dual A/C Ducts
5. Luan
6. 1" Block foam insulation
7. Tubular aluminum framing
8. Luan
9. Foam padding
10. Vinyl interior headliner

2-INCH VACUUM-BOND LAMINATED SIDEWALLS

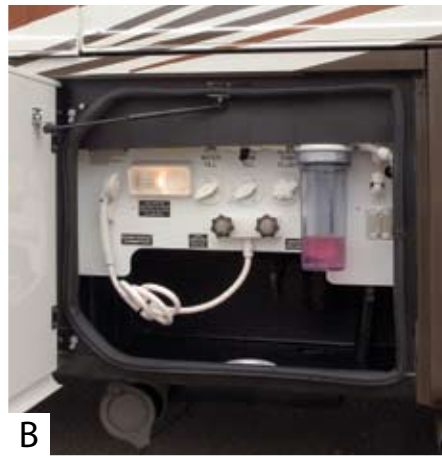
11. Decorative interior wall board
12. Electro-galvanized sheet metal backers
13. Tubular aluminum framing
14. Block foam insulation
15. All sidewall openings framed in aluminum
16. Luan
17. Smooth gelcoat fiberglass exterior (Required option)

3-INCH VACUUM-BOND LAMINATED FLOOR SYSTEM

18. Fiberglass reinforced vinyl vapor barrier
19. Luan
20. 2.5" Block foam insulation
21. Virtually seamless floor decking
22. Thick padding
23. Durable carpet



A



B



C



D



E



F



G



H

GEORGETOWN SPECIAL FEATURES

A. REAR TRUNK. All standard Georgetown models have an opening rear trunk for all of your miscellaneous travel items and storage for your optional spare tire.

B. WATER FILTRATION SYSTEM purifies your water for the whole coach. This system is found standard on every Georgetown model.

C. SPRING-BACKED DINETTE CUSHIONS are supremely comfortable. Seats lift up to provide extra storage below.

D. PASS-THROUGH STORAGE compartments are lighted creating expansive storage to take it all with you. Side hinge doors make access easier.

E. CONVENIENCE COMMAND CENTER keeps all the controls managed in one place.

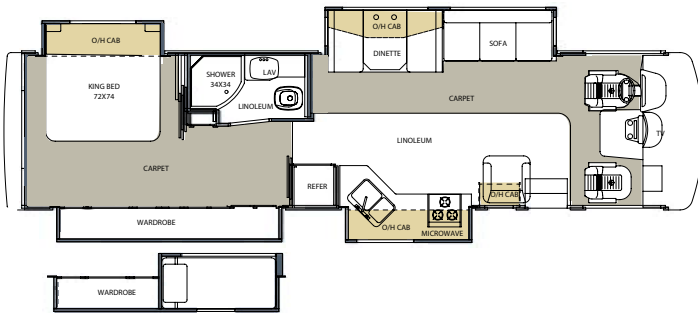
F. CO-PILOT WORK STATION provides a convenient area for your laptop or road map. Now the co-pilot has a place to spread out.

G. UNDER BED STORAGE provides that additional storage space where the competition comes up short.

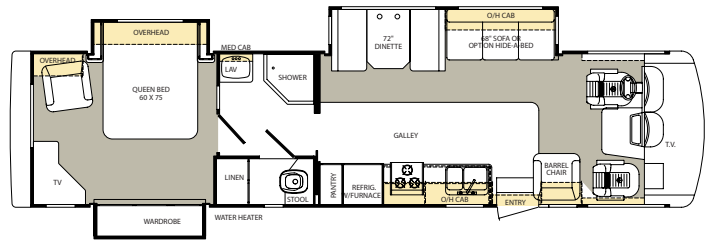
H. FULLY AUTOMATIC LEVELING JACKS are standard on all Georgetown models.

GEORGETOWN FLOORPLANS

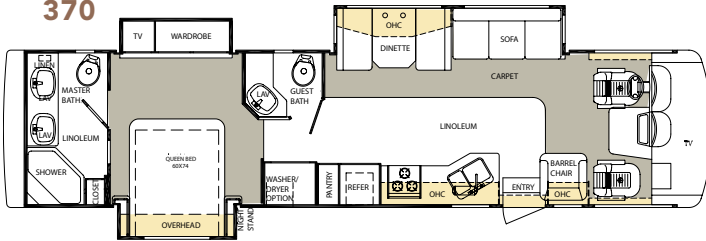
357



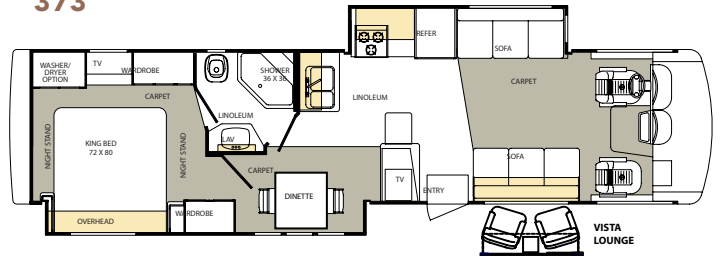
359



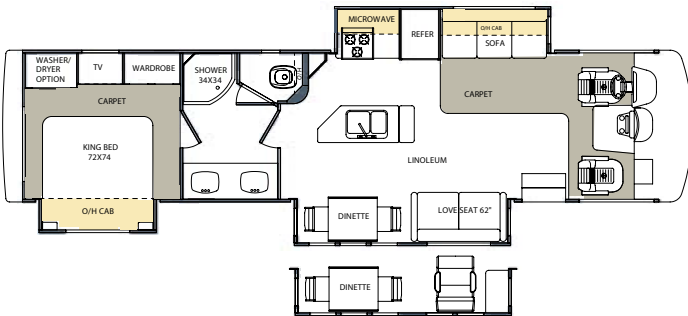
370



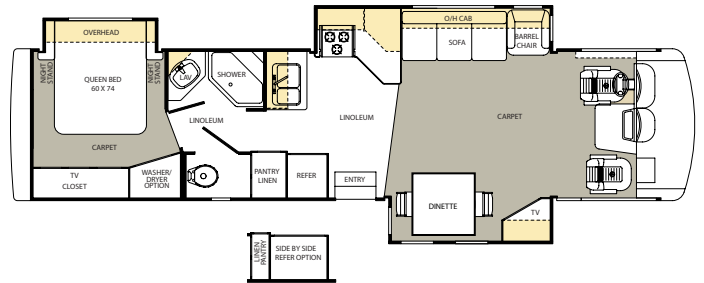
373



374



378



DIMENSIONS & CAPACITIES

	357QS	359TS	370TS	373DS	374TS	378TS
GCWR	26,000	26,000	26,000	26,000	26,000	26,000
GVWR	22,000	22,000	22,000	22,000	22,000	22,000
UVW	20,483	20,045	20,523	19,949	20,427	19,360
CCC	1,517	1,955	1,477	2,051	1,573	1,596
Wheel Base	228"	242"	242"	242"	242"	242"
Fuel Capacity	75	75	75	75	75	75
Tire Size	22.5	22.5	22.5	22.5	22.5	22.5
Interior Height	80"	80"	80"	80"	80"	80"
Interior Width	96"	96"	96"	96"	96"	96"
Overall Height w/ AC	12'5"	12'5"	12'5"	12'5"	12'5"	12'5"
Overall Length	37'4"	36'8"	37'3"	37'6"	37'11"	37'2"
Overall Width	100"	100"	100"	100"	100"	100"
Fresh Water (gal)	80	80	80	80	80	80
Black Water (gal)	41	41	82	41	41	41
Grey Water (gal)	41	41	82	41	41	41
LP Tank (lb.)	105	105	105	105	105	105

PEACE OF MIND.

Forest River has yet another exclusive feature to offer: One year of free roadside assistance will be given to every Georgetown customer. This is just one more way to say "Thank you" and to ensure an enjoyable traveling experience.



ESPRESSO EXTERIOR



MIDNIGHT EXTERIOR



BRONZE XL EXTERIOR



AQUA XL EXTERIOR

GEORGETOWN STANDARDS AND OPTIONS

EXTERIOR

- One-piece laminated fiberglass roof
- High-Gloss Gelcoat fiberglass sidewalls
- Side-hinge baggage doors
- Rotocast one-piece storage compartments
- Cable T.V. and phone jacks
- Rear cap with trunk (spare-tire capable)
- 2 Coach batteries
- Entrance step – electric
- Hitch 5000 lb.
- Automatic hydraulic leveling jacks
- Rear Ladder
- Mud flaps
- Outside shower
- Slideout Room awning(s)
- A&E electric Weatherpro awning (opt.)
- Remote heated mirrors
- TV antenna with booster
- 22.5" tires with Alcoa aluminum rims
- Full body paint option (Midnight or Espresso)

STRUCTURAL

- Aluminum framed all openings
- Insulated, formed one-piece baggage doors
- 3" Laminated, steel framed floor
- 3" floor with ducted heating
- Laminated alum. framed sidewalls, roof (including all openings)
- Under floor steel truss system

DRIVER/PASSENGER AREA

- Driver/passenger reclining swivel bucket seat
- Soft touch leatherette driver and passenger seats
- Auxiliary start switch
- Defroster fans
- Driver/passenger map lights
- Optional driver's door w/ electric window
- Optional driver 6-way power seat
- Front wrap-around privacy curtain
- I.C.C. flash
- Radio – single CD AM/FM
- Radio power selector switch
- Rear vision camera with monitor & audio
- Color monitor w/ side camera (opt.)
- Navigation System (opt.)

LIGHTING/DINING/GALLEY

- 30" OTR Stainless Steel Microwave
- 9' Curved Door Stainless Steel Refrigerator
- 12' 4-door Stainless Steel Refrigerator with Icemaker (opt.) (Some models)
- Stainless Steel Oven w/ Sealed burners
- Solid Surface Kitchen Countertop
- Undermount Stainless Steel Sink with Flush Solid Surface Covers
- Pull-Out Sprayer Faucet
- Folding Range Cover with Solid Surface Overlay
- Flush Mount Halogen Ceiling and Accent Lighting
- No carpet stepwell

- Satellite Prep
- Slide out pantry (w/a)
- 32" LCD HD TV with Home Theater
- Video switch box
- Vinyl padded soft touch ceiling
- Pleated shades-Day/Night (opt.)
- Euro recliner with ottoman (opt.) Std. 378
- Soft touch leatherette Hide-ABed sofa (opt.)

BATH

- 10 gallon gas/electric water heater with DSI
- Shower with surround and seat
- Black water tank flush system
- Dual control shower faucet with flex head
- Linoleum in bathroom area
- Medicine cabinet (w/a)
- Porcelain toilet with foot flush
- Shower skylight
- Towel bar
- Washer/dryer (opt. models 370, 373, 374, 378)
- Washer dryer prep (opt. models 370, 373, 374, 378)

BEDROOM

- 60" x 75" island queen bed with bedspread, headboard pillow shams and storage below (72 x 75 King Bed models 373, 357, 374)
- 20" flat screen T.V. (20" LCD Model 378)
- Bedskirts
- Nightstands with 110V outlets
- Window – day/night shades (opt.)
- Window – opaque night shades

SAFETY

- 110v GFI protected circuit (kitchen, bath, exterior)
- Carbon monoxide detector (required option)
- Exit window
- LPG detector
- Smoke alarm
- Recess mounted fire extinguisher (inside entry door)

WATER/HEATING/VENTILATION/ POWER

- 50 amp 120v distribution panel and cord
- 65 amp 12v power converter
- Artic package*
- Water filter system (1 micron)
- Ducted in-floor heat 35,000 BTU furnace
- Model 378 two furnaces
- Electric battery disconnect
- Fantastic roof vent – (opt. kitchen, bath)
- Generator – Onan 5.5 Marquis or 6.5 Generac (opt.)
- Power ceiling fan in bath
- Roof A/C – 13.5 BTU ducted – front (std.)
- Optional bedroom A/C (13.5 BTU)
- Optional low profile A/C

- Roof A/C – 15.0 BTU ducted – IPO standard 13.5 front (opt.)
- Roof A/C – heat strip (opt.)

OPTIONAL XL PACKAGE

- Thermopane windows
- Deluxe exterior assist handle
- Deluxe exterior paint and graphics
- Day/night shades
- Deluxe bath lighting
- Faux marble sink(s) and Shower
- Corian edge countertops in bath and bedroom (w/a)
- 32" LCD HD TV with Home Theater
- Dimmer switches for Halogen lighting in Main Slideout
- Unique Entrance door wood trim
- Flush-Fit solid surface stove covers
- Deluxe swivel reading light for bed slide

VALUE PACKAGE

(Special package for Models 373, 357, 374)

- Generac 6.5 generator with 50 amp service
- A&E Weatherpro Awning
- Rear vision camera
- Exterior paint
- Gelcoat fiberglass
- Doorside soft-touch leatherette Jack-knife Sofa (373, 374)
- Solid Surface Kitchen Countertops
- Flush solid surface sink covers
- 9' Stainless Steel curved door refrigerator
- 30" Stainless Steel OTR Microwave
- Stainless Steel oven with sealed burners
- Pull out Sprayer faucet
- Halogen Flush Mount lighting in Living Room and Kitchen
- Folding range cover with solid surface overlay

Forest River Encourages You to Buy Locally

Forest River, Inc. strongly encourages our retail customers to purchase from their local dealership whenever possible due to the following factors:

- **Our Dealers are as a rule, independently owned and operated businesses. Outside of those customers they personally sold products to, they are not contractually obligated to perform warranty service on Forest River products that were purchased elsewhere. There may be an occasion that you would be required to return to the point of purchase to satisfy warranty requirements.**
- **Although many dealerships will eventually service products not purchased at their place of business, they will usually take care of their customers and other Forest River customers who are traveling away from their local dealer as they would their own.**
- **Local purchases allow a customer to establish a relationship with a dealer close to home. This relationship provides the customer with a convenient location for service and support from a "home town" professional.**
- **The opportunity for a thorough PDI (Pre Delivery Inspection) and product orientation is an additional benefit of buying from your local dealer. Further providing the opportunity for refresher courses or the ability to get questions answered much more conveniently.**
- **For our Canadian customers, there are also requirements which must be met to bring an RV purchased out of the country to their home. Although not insurmountable, these requirements may involve such things as additional inspections and certifications, taxes and fees. Your local Canadian Dealer is a professional at meeting these requirements.**

Forest River's goal is for all RV Owners to fully enjoy their RV experience. In light of this goal, and considering the advantages of buying local, we encourage you to be thorough when determining what product to purchase and which dealer to purchase it from as both are key to your ultimate satisfaction and the realization of your dreams.



Model 340 SE "Dream Kitchen" shown with Glazed Cherry cabinets



Georgetown SE by Forest River

Georgetown SE Series is the Industry's value leader- Luxurious interiors with high end features need not be sacrificed for affordability.

The Bunk House Option (left) gives you (2) two video players with monitors. The bunk area also has individual drapes for maximum privacy. (Available on 350 SE, and 357 Georgetown Models)

All SE Models come with the new 34" radius shower (far right). A built in seat makes life a bit easier, and soft colors bring in the morning gently. (N/A 338)

The SE cockpit features standard soft touch leatherette driver and passenger seats. The easy view camera position makes backing up a breeze. Function and elegance are central to the forward control area...life on the road as it was meant to be. (bottom left)

Compare Features, Compare Price, No One Else Comes Close!





Model 350 SE shown with optional Soft Touch Leatherette Hide-A-Bed Sofa (Mohogany Decor)
Shown with Glazed Maple cabinets



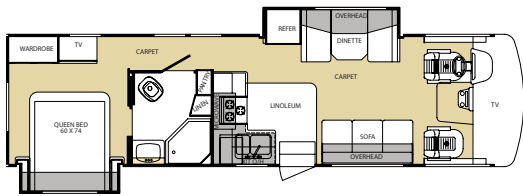
Model 340 SE Bedroom Slide shown with Glazed Maple cabinets



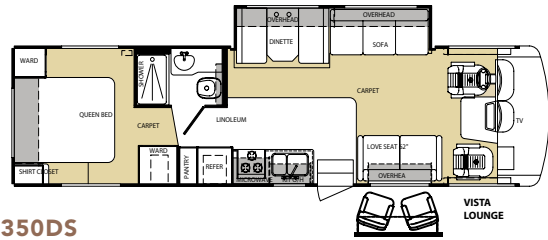
34" Radius Shower w/ seat

GEORGETOWN SE FLOORPLANS

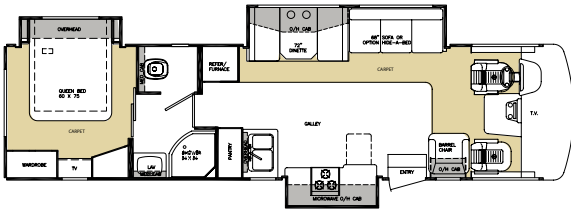
315DS



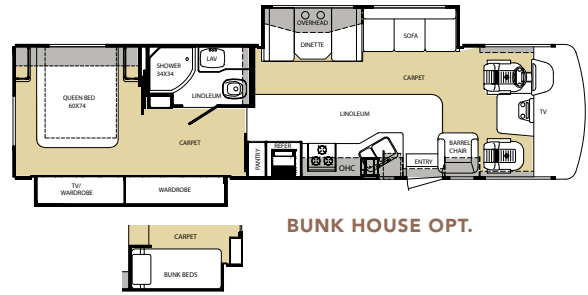
338S



340TS



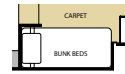
350DS



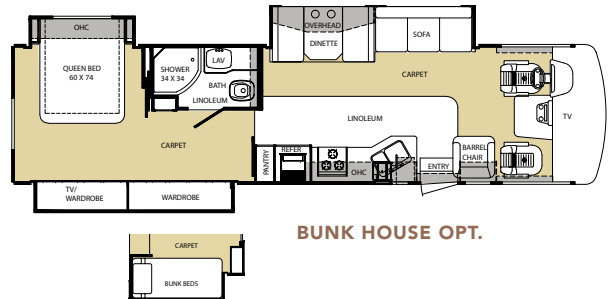
DIMENSIONS & CAPACITIES

	315DS	338S	340TS	350DS	350TS
GCWR	26,000	26,000	26,000	26,000	26,000
GVWR	20,500	20,500	22,000	22,000	22,000
UVW	17,903	17,921	19,361	19,455	19,459
CCC	2,597	2,579	2,639	2,545	2,541
Wheel Base	228"	228"	228"	228"	228"
Fuel Capacity	75	75	75	75	75
Tire Size	19.5	19.5	22.5	22.5	22.5
Interior Height	80"	80"	80"	80"	80"
Interior Width	96"	96"	96"	96"	96"
Overall Height w/ AC	12'3"	12'3"	12'5"	12'5"	12'5"
Overall Length	32'10"	33'1"	34'5"	35'6"	35'6"
Overall Width	100"	100"	100"	100"	100"
Fresh Water (gal)	80	80	80	80	80
Black Water (gal)	41	41	41	41	41
Grey Water (gal)	41	41	41	41	41
LP Tank (lb.)	105	105	105	105	105

BUNK HOUSE OPT.



350TS



BUNK HOUSE OPT.



32" LCD HD TV WITH HOME THEATRE (OPTIONAL ON ALL SE Models)



GEORGETOWN SE SPECIFICATIONS

EXTERIOR

- Cable TV/phone jacks
- Dual Exterior Mirrors
- Entrance step- Electric
- Hitch 5000 lb
- Patio light
- Ladder (opt)
- Exterior Paint Package (opt)
- Hydraulic auto leveling jacks
- Stainless steel wheel liners (required opt. models 338, 315)
- 22-1/2" Alcoa wheels (models 340, 350)
- Patio awning
- Picnic Table (338S)
- Rear bedroom window (opt)
- Slide-out room awning (s)
- Thermo Pane Windows (opt)
- TV antenna w/booster
- Mud flaps

STRUCTURAL

- 3" Laminated steel framed floor
- Fiberglass laminated 1-piece roof
- Laminated alum. framed sidewalls, roof (includes all openings)
- Under floor steel truss system

BEDROOM

- 60" x 75" island queen bed
- Nightstands
- Flat screen- 20" color TV (opt) N/A on 338
- Bedspreads, pillow shams (opt)

BATH

- 6 gallon gas water heater w/DSI
- ABS shower w/surround and seat (N/A 338)
- Shower skylight

SAFETY

- 110v GFI protected circuit (kitchen, bath, exterior)
- Carbon monoxide detector (mandatory/opt)
- Exit window
- LPG detector
- Smoke alarm

DRIVER/PASSENGER AREA

- Auxiliary start switch
- Driver/passenger map lights
- Soft-Touch Leatherette driver/passenger seats
- Front wraparound privacy curtain
- I.C.C. flash
- Big button radio- AM/FM CD (std.)
- Radio power selector switch
- Rear vision camera w/monitor and sound (opt.)

LIGHTING/DINING/GALLEY

- 30" OTR Stainless Steel Microwave
- 9' Curved Door Stainless Steel Refrigerator
- Stainless Steel Oven with Sealed burners
- Solid Surface Kitchen Countertop
- Undermount Stainless Steel Sink with Flush Solid Surface Sink Covers
- Single lever Pull-Out Sprayer Faucet
- Folding Range Cover with Solid Surface Overlay

- Flush Mount Halogen Ceiling and Accent Lighting
- No carpet stepwell
- Satellite Prep
- 32" LCD HD TV with Home Theater (opt.)
- Video switch box (required opt.)
- Pleated shades-Day/Night (opt.)
- Euro recliner with ottoman (opt.)
- Soft touch leatherette Hide-A-bed Sofa (opt.)

WATER/HEATING/VENTILATION/POWER

- 50 amp 120v distribution panel and cord
- 65 amp 12v power converter
- Full Coach Water Filtration System (1 Micron)
- Ducted in-floor heat 35000 btu furnace
- Electronic battery disconnect
- Generator- Onan 5.5 Marquis & 50 amp (opt.)
- Power ceiling vent in bath
- Roof A/C- 13.5 Brisk Air ducted- Front (std.)

* Required option

GEORGETOWN SE EXTERIORS



LTD PACKAGE (REQUIRED OPTION)

- 6.5 Generator
- A&E Electric awning (Weatherpro series w/ remote & windsensor)
- Rear Vision system
- Exterior paint
- Fiberglass roof
- Gelcoat fiberglass
- Deluxe grab handle

Georgetown SE

by Forest River



GEORGETOWN SE MODEL 340

Forest River, Inc. 58277 S.R. 19 South Elkhart IN, 46517 Phone: 574.296.7700
Fax: 574.295.8749 www.forestriverinc.com www.forestriveraccessories.com



All illustrations and specifications contained in this literature are based on the latest product information at time of publication. Forest River reserves the right to make changes in prices, colors, materials, equipment and specifications at anytime without notice and assumes no responsibility for any error in this literature. All units are shipped F.O.B. Goshen, Indiana. Litho U.S.A.

CONSULT YOUR LOCAL DEALER FOR WARRANTY INFORMATION. PHOTOS MAY DEPICT OPTIONAL FEATURES. LITHO: U.S.A. FOR 0513