

POWER

WHAT'S NEW

Expanded Warranty Coverage

Effective with 2007 and subsequent Model Year, the Ford Powerstroke limited warranty coverage period is extended from 3 years/36,000 miles to 5 years/100,000 miles. In addition, Full Roadside Benefits including towing services, lock-out service, and fuel-fill assistance have been extended to 5 years/100,000 miles.

Attractive Euro-Bright® Aluminum Wheels

All Ford 22.5x7.5" aluminum wheels feature the popular Euro-Bright® surface treatment. Motorhome owners like the Euro-Bright® finish because it resists chips, cracks, peeling and corrosion, and does not require polishing.

22,000 Lb. GVWR Now Available in 242" Wheelbase

The Ford Class A Motorhome Chassis is now available in a 242" wheelbase with 22K GVWR configuration. The new combination provides an excellent foundation for longer motorhome bodies and multiple slide-outs.

Steering Wheel Size Increased to 17.5"

Ford Motorhome chassis rated at 20K, 20.5K and 22K GVWR will now be equipped with the new, larger 17.5" diameter steering wheel. Motorhome owners will appreciate the



6.8L V10

HORSEPOWER



TORQUE



Power-Packed, 3-Valve Engine

The 6.8L V10 3-Valve Triton® Engine delivers a powerful 362 horsepower and 457 lbs.-ft. of torque.

The unique Electronic Throttle Control assures smooth power and acceleration for enjoyable motorhome driving performance. When teamed with a 3-valve design, the 6.8L V10 provides a combination of fuel efficient operation and load-moving torque motorhome drivers are looking for.

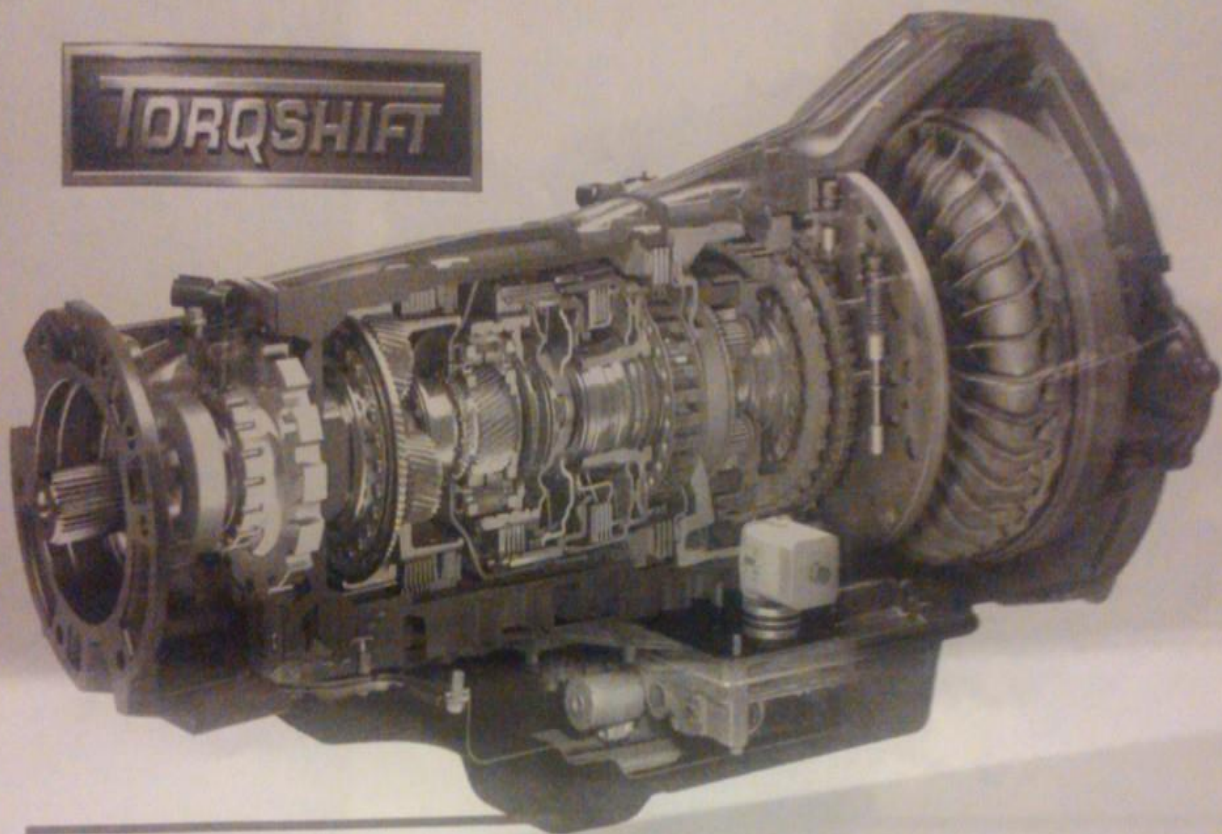
The 6.8L Triton™ V10 continues to be a durable, proven performer in Class A Motorhomes. The engine also includes a fail-safe cooling system and 100,000 mile tune-up interval.*

Ford Triton® 3-Valve 6.8L V10

- Horsepower (SAE Net) 362@4750 rpm
- Torque (SAE net) 457 lbs.-ft. @ 3250 rpm
- Fuel Type Gasoline
- Fuel Delivery Electronic Throttle Control

PERFORMANCE

TORQSHIFT



TorqShift® 5-Speed Automatic Overdrive Transmission

TorqShift® uses direct electronic shift control in unison with the powertrain control module to precisely manage power delivery in any driving circumstance.

Originally designed for service in exceptionally tough commercial truck duty cycles, the TorqShift® features a rugged torque converter and larger capacity fluid pump for optimized cooling and durability. A 0.71 overdrive ratio further enhances overall vehicle efficiency.

Tow/Haul



Tow/Haul Mode

The selectable Tow/Haul Mode helps reduce gear hunting, improves power delivery and uses engine braking to help control vehicle speed when descending hills.

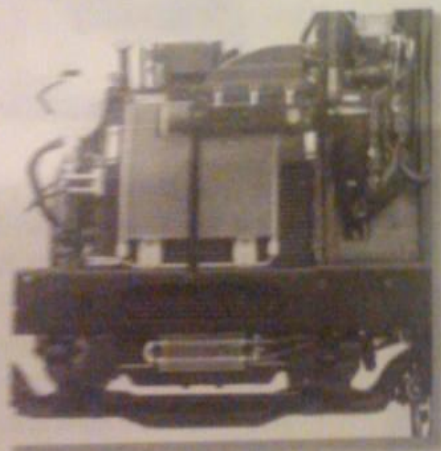
DEPENDABILITY

Full Length Steel Frame And 75 Gallon Fuel Tank

The Ford Chassis features a full length, full channel rugged, tough frame that extends all the way to the end of the chassis resulting in a stable foundation for motorhomes with large bodies and multiple slide-outs. The 75 gallon fuel tank is packaged low between the frame rails to provide a low center-of-gravity for enhanced vehicle handling and "sway" control characteristics.

Full Length Frame

75 Gallon Fuel Tank



Extra Cooling Capacity

Extra Cooling Capacity

Large radiator provides increased coolant capacity for engine temperature control. High capacity transmission oil cooler provides optimum cooling for TorqShift™



Robust Steering System

Robust Steering System

The Ford Steering System features heavy duty steering gear housing and large, robust linkage and pitman arms for outstanding handling characteristics. Handling is further enhanced by an adjustable steering wheel/column with horn ring and stalk-mounted controls.

RIDE



Front and Rear Suspensions

Smooth Riding Suspensions
The Ford front and rear suspension systems feature long, wide springs which are designed with optimal camber and improved deflection rates to provide exceptional ride characteristics.

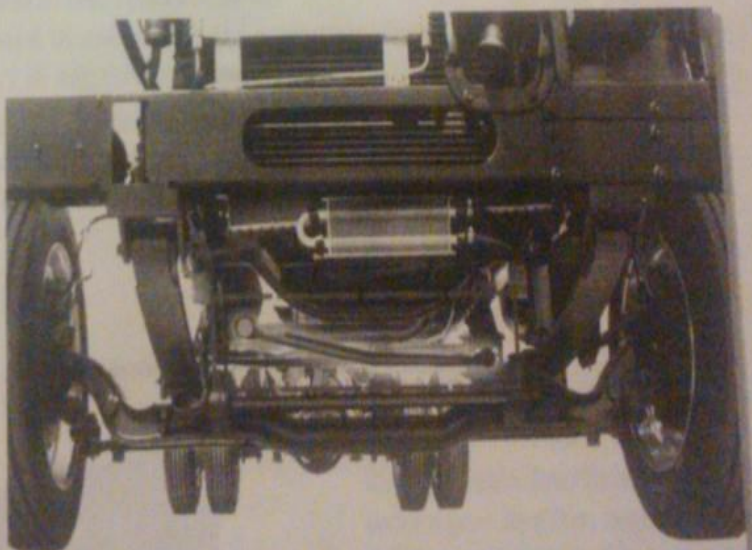


Bilstein Shock Absorbers



Premium Bilstein® Shocks
All Ford Motorhome Chassis are equipped with premium Bilstein® front and rear shock absorbers to help smooth-out road bumps and potholes. They are complemented by new, variable-rate jounce bumpers that help to reduce road shocks even further.

Front Track Bar
Standard heavy duty, front track bar* and large diameter, front and rear stabilizer bars combine to help control fore and aft pitch as well as lateral roll.



Front Track Bar



IFICATIONS



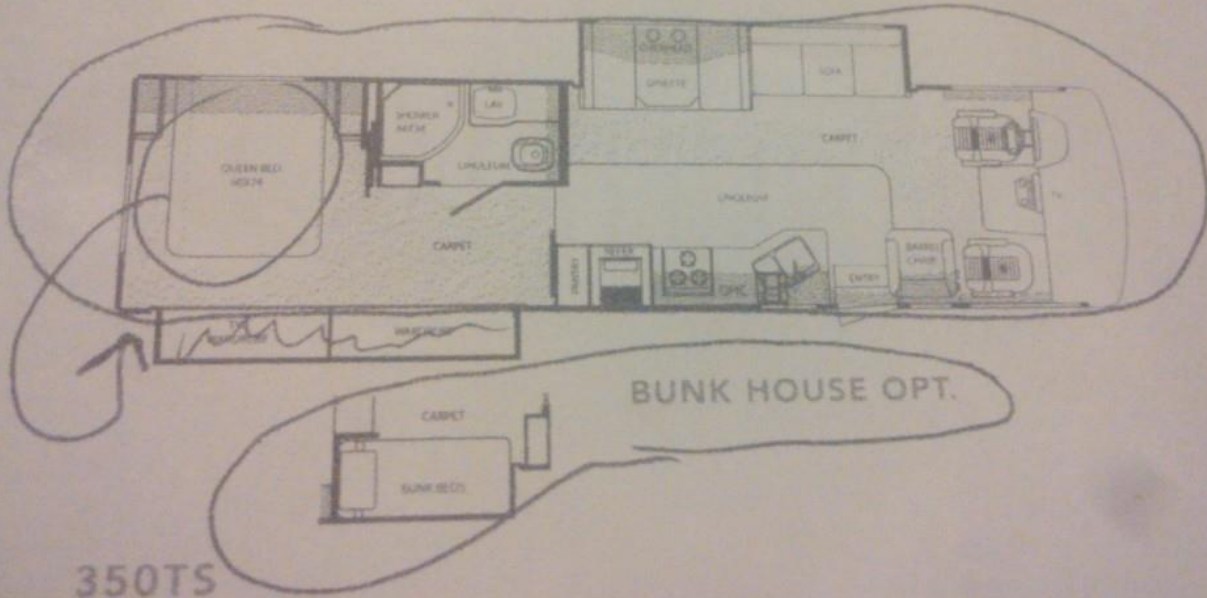
10,000 LBS. GVWR	18,000 LBS. GVWR	20,500 LBS. GVWR	22,000 LBS. GVWR	FEATURE
26,000				Ford GCW Rating results in up to 10,000 lbs. of towing capacity.
500	7,000	7,000; 7,500	7,500	(Gross Axle Weight Rating)
1000	11,000	13,500	14,500	(Gross Axle Weight Rating)
190	178, 190, 208, 228	208, 228	208, 228, 242	Choice of wheelbases can accommodate most Class A motorhomes.
7,500 Monobeam				Ford standard front axle features forged steel, Monobeam design.
Dana 80 Float 8:1 1480	11,000 Dana 80 Full-Float 5.38:1 1480	13,500 Dana S110 Full-Float 5.38:1 1480	14,500 Dana S130 Full-Float 5.38:1 1480	Ford offers three rear axle choices to provide up to an extra 3,500 lbs. of capacity.
Power, Hydraulic w/4-wheel, 4-Channel Anti-Lock Braking System Front - Disc (15.55" Dia) Rear - Disc (15.55" Dia) HydroBoost 8.19:1 Ratio		Power, Hydraulic w/4-wheel, 4-Channel Anti-Lock Braking System Front - Disc (15.55" Dia.) Rear - Disc (15.55" Dia.) HydroMax 21.1:1 Ratio		Ford Chassis features 4-wheel, Anti-Lock Braking System (ABS) and Four Wheel Disc Brakes.
<p>ign includes mechanical "lock-up" of the transmission when in park position. im type, transmission mounted driveline with single stroke pedal. Hand release of brake.</p>				<p>Ford system provides mechanical lock-up of transmission when vehicle is in "park" position. Supplemented by braking of the transmission mounted, driveline. Parking brake actuation results in smooth, convenient operation and does not require hydraulic assistance to release.</p>
130 Amp.† / 1,950 Watt 12 Volt - 750 CCA (78 Amp.-Hr.) Maintenance-Free				Ford alternator and battery produce capacity to satisfy motorhome power requirements.
6.8L Triton™ (415 CID) V10 3-Valve Sequential Electronic Fuel injection (SEFI) 362 @ 4750 RPM 457 @ 3250 RPM				6.8L V10 delivers proven power, performance and economy.

10,000 LBS. GVWR	18,000 LBS. GVWR	20,500 LBS. GVWR	22,000 LBS. GVWR	FEATURE
75.0 Gallon (284L) Aft-Of-Rear-Axle Left hand Side Fuel Fill				75 gallon fuel capacity provides convenience of an extended cruising range.
Multi-Leaf 7,000 63.0 Gas-Pressurized Bilstein® 1.63 Front	Tapered, Multi-Leaf 7,000 63.0 Gas-Pressurized Bilstein® 1.63 Front	Tapered, Multi-Leaf 7,000 63.0 Gas-Pressurized Bilstein® 1.63 Front	Tapered, Multi-Leaf 7,500 63.0 Gas-Pressurized Bilstein® 1.63 Front	Ford standard front springs feature Multi-Leaf tapered design for optimized ride characteristics. Shock absorbers are premium Bilstein® and stabilizer bar is 1.50 inches in diameter.
Variable Rate, Front (Opt.)	Variable Rate, Front Front (Std.)	Variable Rate, Front Front (Std.)	Variable Rate, Front Front (Std.)	Variable rate front jounce bumpers and heavy duty front track bar help control fore and aft pitch and lateral roll.
81.4	81.4	81.4	79.8	Wide, front tread width is designed to provide good handling characteristics and enhanced stability with wide-body and slide-out equipment.
Multi-Leaf 11,000 64.0 Gas-Pressurized Bilstein® 1.63 Rear	Tapered, Multi-Leaf 11,000 64.0 Gas-Pressurized Bilstein® 1.63 Rear	Tapered, Multi-Leaf 13,500 64.0 Gas-Pressurized Bilstein® 1.63 Rear	Tapered, Multi-Leaf 14,500 64.0 Gas-Pressurized Bilstein® 1.63 Rear	Rear spring capacities are available to accommodate a variety of motorhome body and weight requirements. Shock absorbers are premium Bilstein® and stabilizer bar is 1.40 inches in diameter.
74.0		73.3		Wide rear tread width provides enhanced handling.
Power, TRW TAS 40 Gear (includes cooler) 8 (178" Wheelbase) Standard Standard (17.5")*		Power, TRW TAS 40 Gear (includes cooler) 61.6 (208" Wheelbase) Standard Standard (17.5")		Ford turning angle results in small turning diameters to aid maneuverability.
8,000 lbs Class II-IV System	5,300 lbs. Class II-IV System	4,000 lbs. Class II-IV System		Ford Class A chassis features Class II Wiring System including electric brake v
Shift™ 5-Speed Automatic Overdrive with Tow/Haul Mode Overdrive (0.71 Ratio)				Ford features a driver-controlled Tow/Haul button mounted on the end of the shift lever.
19.5-F Highway Tubeless	(6) 245/70R 19.5-F (12 ply) Highway Metric Radial Tubeless	(6) 245/70R 19.5-F (12 ply) Highway Metric Radial Tubeless	(6) 235/80R 22.5G XRV (14 ply) Highway Metric Radial Tubeless	Ford F-Series Super Duty motorhome chassis features wide, low-profile, 19.5 inch and 22.5 inch metric radial t
Disc, 19.5"	(7) 10-Hole Disc, 19.5" x 6.75" Steel	(7) 10-Hole Disc, 19.5" x 6.75" Steel	(6) 8-Hole Disc, 22.5" x 7.5" Polished Aluminum Bright®	Ford uses 10-bolt lug nut pattern on 19.5 inch wheels, and an 8-bolt lug nut pattern

350DS



VISTA LOUNGE



350TS

DIMENSIONS & CAPACITIES

	315DS	3385	340TS	350DS	350TS	350TS
GCWR	26,000	26,000	26,000	26,000	26,000	26,000
GVWR	20,500	20,500	22,000	22,000	22,000	22,000
UW	17,903	17,921	19,361	19,455	19,459	19,459
CCC	2,597	2,579	2,639	2,545	2,541	2,541
Wheel Base	228"	228"	228"	228"	228"	228"
Fuel Capacity	75	75	75	75	75	75
Tire Size	19.5	19.5	22.5	22.5	22.5	22.5
Interior Height	80"	80"	80"	80"	80"	80"
Interior Width	96"	96"	96"	96"	96"	96"
Overall Height w/ AC	12'3"	12'3"	12'5"	12'5"	12'5"	12'5"
Overall Length	32'10"	33'1"	34'5"	35'6"	35'6"	35'6"
Overall Width	100"	100"	100"	100"	100"	100"
Fresh Water (gal)	80	80	80	80	80	80
Black Water (gal)	41	41	41	41	41	41
Grey Water (gal)	41	41	41	41	41	41
LP Tank (lb.)	105	105	105	105	105	105

www.cvfinancedirect

2008 Georgetown M-350DS LIMITED FORD

[Close Window](#)

SE M-350DS LIMITED FORD

8/21/2012

NADAguides.com Price Report

	Suggested List Price	Low Retail	Average Retail
Base Price	\$102,665	\$46,840	\$56,430
Mileage: 10,000 (+7%)		\$3,279	\$3,950
Options:			
Furnace (30,000-35,000 BTU)		\$230	\$280
13,500 BTU Central/Ducted		\$445	\$535
Water Heater 6 Gallon Gas/Elec. w/DSI		\$180	\$215
Microwave/Hood Combo		\$280	\$335
Gas Grill Cook Top		\$615	\$740
Steering Stabilizer		\$210	\$255
32" Flat Screen TV		\$850	\$1,025
AM/FM/CD Stereo		\$175	\$210
DVD Player		\$190	\$230
Satellite System - In Motion		\$1,410	\$1,700
TV 19" Color		\$230	\$280
TV 13" Color		\$165	\$200
VCR/VCP		\$155	\$185
6 KW Gas		\$1,695	\$2,040
Hydraulic Leveling System (Automatic)		\$1,720	\$2,075
Awning for Slide-out (Coach)		\$230	\$280
Aluminum RV Wheels (Set of 4)		\$915	\$1,105
Auxiliary Battery (Each)		\$45	\$55
Cruise Control		\$65	\$80
Electric Step (Double)		\$165	\$200
Fiberglass Exterior 31' and Over		\$1,290	\$1,555
Full Body Paint		\$3,915	\$4,715
Skylight		\$135	\$160
Shower Enclosure (Glass)		\$110	\$135
LPG Gas/Smoke Detector		\$60	\$75
Luggage Rack and Ladder		\$80	\$95
Power Slide-Out Room 16' (Each)		\$1,940	\$2,340
Tilt Wheel		\$65	\$80
Trailer Hitch		\$75	\$90
Water Purifier W/Dispenser		\$80	\$95
TOTAL PRICE	\$102,665	\$67,839	\$81,745

Standard Equipment Details

RV Type: Motorhome