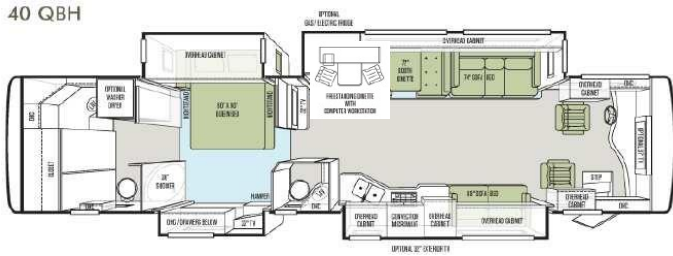


<http://www.dreamfindersrv.com/RV/7707895/details.htm>

For Sale: \$209,500 Negotiable!

Must sell due to lifestyle changes, traveling abroad. **Like New!** With \$10,000+ after market conveniences and optional transferrable warranty. Non Smoking. Also available, 2012 Jeep Liberty Tow Vehicle.



2013 Tiffin Motorhomes Phaeton 40 QBH

Vin: 4UZACHB390CFH0389 Serial No: 40QB092769139453

FCCC Cummings 380 EPA 10, Allison

Transmission, Freightliner Chassi, 24,000 Miles

General Exterior: Standard features on all 2013 Phaetons QBH (4 slides and 1 ½ Bath), Bay Slide Tray.

Body: Gold Coral Full Body Paint; **Generator:** 10 Kw Onan Manual Slide-Out Generator

Additional add-ons: Tyron Tire Safety Appliance, Surge Protector, Interior Hadley Air Horns, Cobra 2Way Radio with Weather Information. Added: Customized dash cover and entry protective carpeting.

Air Conditioners: 3 Low Profile Roof ACs with Heat Pumps

Cockpit: Power Ultra Leather Driver & Passenger Seats with Passenger Footrest, Contemporary Wraparound Dash, Drawer in Step Well, Light in Step Well, Dual Dash Fans, Two Drawers in Dash, Six 12 V Dash Receptacles, Single CD Player and AM/FM Stereo, Fire Extinguisher, Computer Slide-Out Tray with Lock-Out Rails on Passenger Side, Power Solar/Privacy Windshield Shade, Driver/Passenger Side Window Solar/Privacy Shades, Color Rear Vision Monitor System with Side-View Cameras Activated by Turn Signals, custom Infrared Repeater systems In Dash Navigation. Stereo/Satellite Ready Radio.

General: 7' Ceilings, High Gloss English Chestnut Cabinets, Solar/Privacy Roll Shades, 3 Roof Vents w/3speed Fans, Tank Level Monitor System, Smoke Detector, Electric Step Cover, 12V Disconnect Switch.

4 TVs: Exterior LCD TV, Galley TV, Bedroom TV, Front Dash OH TV, Automatic Satellite/Winegard, Surround Sound, Concealed Speakers

Living Area/Dinette: Free Standing Dinette (with 4 chairs), Computer Work Station with Built in Cabinets, Solid Surface Counter, TV in Galley Area, Ultra Leather DE Sofa Bed – PS, Ultra Leather AirCoil HideABed Sofa Sleeper DS, Central Vacuum System, Porcelain Tile.

Bathrooms: **Half Bath:** Sink Lavatory – PS, 4 Cabinets; **Full Bath:** Wardrobe with Mirrored Sliding Doors, 5 Cabinets & Vanity, vanity Lights, Skylight in Shower with Sliding Cover, Solid Surface Vanity Top &

Bowl, Custom Flat Panel Bath Door, One-piece Fiberglass Shower Surround, 10-Gallon DSI Gas/Electric Water Heater, Glass Show Door, 3-speed Fantastic Fan, Hand-held Shower Head with On/Off Switch, Spray Cleaner on Toilet. Stacked Washer/Dryer, Porcelain Tile.

Kitchen: Solid Surface Countertop with Double Stainless Steel Sink, Solid Surface Sink Cover, Expand-anIsland, Permanent Mounted Folding Solid Surface Cooktop Cover, Sink Cover Storage Racks Underneath

Sink, Single Lever Sink Faucet with Sprayer, Stainless Steel Microwave/Convection Oven, Galley Splash Guards, Stainless Steel Residential Refrigerator with Ice & Water Dispenser in Door, 3 Burner Cook Top, Built-in Soap Dispenser, Built-in Waste Can, Porcelain Tile.

Bedroom: Bed Comforter with Throw Pillows, LED TV with Winegard Satellite Receiver, Under Bed Storage, Memory Form Queen Mattress (60" x 80"), Bedroom TV, Ceiling Fan, Carbon Monoxide Detector, Wood/Ultra Leather Headboard, LPG Detector, Solid Surface Counter with Chest of Drawers(4) and Laundry Hamper, Wall-to-Wall Carpet.





40 QBH

