

2008 Damon Tuscany 4072

<http://www.DreamFindersRV.com/RV/7708403/details.htm>

From: MOTOR COACH
 SOLD TO: CAMPING TIME RV CENTERS LLC

Page 3 of 3 11/29/2016
 SERIAL #: 08A4072TUN2925 / 4U2AB2BSX8CZ61512
 Wheelbase: 266.00"
 Fresh Water Tank: 96 Gal
 Black Tank: 51 Gal
 Grey Tank: 51 Gal
 Fuel Tank: 100 Gal

CHASSIS: Freightliner
 GVWR: 32,000#

CHASSIS / ENGINE
 ENGINE: Cummins ISC
 HORSEPOWER: 360

TRANS: Allison 3000 MH
 TORQUE: 1050

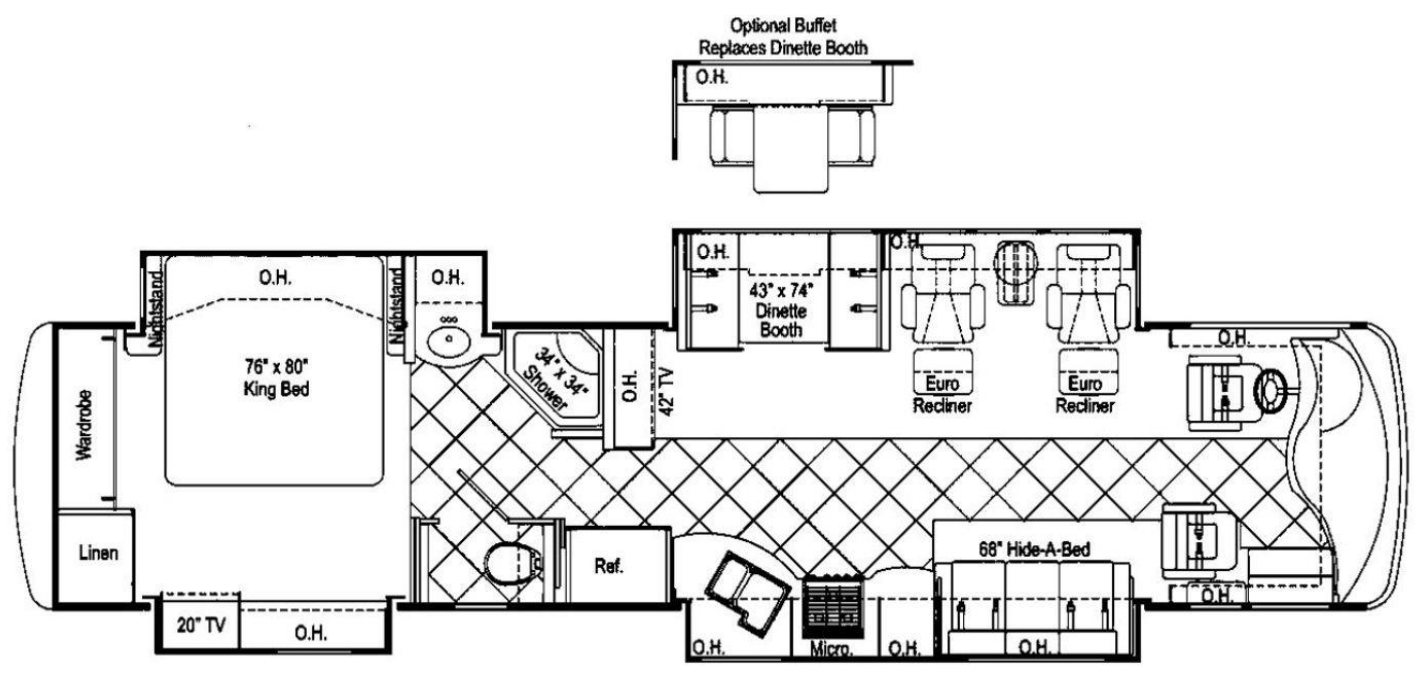
INCLUDED FEATURES

RAISED-RAIL CHASSIS 360 HP CUMMINS ISC ENGINE 1050 Ft./lb. OF TORQUE FULL-BODY PAINT PACKAGE INVISIRITE PRR COLOR-MATCHED ELECTRIC PATIO AWNING INCLUDES WIND SENSOR & REMOTE ALUMINUM WHEELS SIDE HINGED ALUMINUM BAGGAGE DOORS 8.0 ONAN DIESEL GENERATOR 10,000-LB HITCH DUAL FUEL FILLS FULL STAINLESS-STEEL STONE GUARD AIR HORNS REAR LADDER 42" LCD TV ELECTRIC STEP COVER	4-DOOR REFRIGERATOR W/ICE MAKER CHERRY OR MAPLE CABINETRY W/HIDDEN HINGES CHROME MIRRORS W/HEAT & REMOTE RECESSED HALOGEN LIGHTING IN LIVING AREA BUDDY SEAT WITH POWER FOOT REST 10 GALLON GAS/ELECTRIC WATER HEATER W/XT TECHNOLOGY HOME THEATER SYSTEM W/SURROUNDSOUND DOUBLE DIN DASH RADIO W/I-POD CONNECTION SOFA/AIR BED IN ALL FLOORPLANS FULL EXTENSION BALL BEARING DRAWER GUIDES CORIAN COUNTERTOPS CERAMIC TILE (KITCHEN, BATH AND ENTRY) 2000 WATT INVERTER ULTRA-LEATHER FLEXSTEEL COCKPIT SEATS W/6-WAY POWER ON BOTH ELECTRIC WINDSHIELD PRIVACY DRAPE & SUNSCREEN
--	--

OPTIONAL FEATURES

DECOR: DRIFTWOOD MOCHA WOOD: CHERRY FB PAINT: EBONY SUEDE KYLIA SEAL BUFFET W/STORAGE & 4 CHAIRS	LOW PROFILE A/C W/HEAT PUMPS EASY SLIDE STORAGE TRAY-BASEMNT AUTOMATIC SATELLITE DISH COLOR COORDIN WINDOW AWNINGS ULTRA LEATHER SOFA/AIR BED
--	---

BASE PRICE: 224,000.00 OPTIONS PRICE: 5,628.00 FREIGHT: MSRP: 229,628.00



From.

MOTOR COACH

SOLD TO: CAMPING TIME RV CENTERS LLC

CHASSIS / ENGINE

CHASSIS: Freightliner

GVWR: 32,000#

INCLUDED FEATURES

RAISED-RAIL CHASSIS

360 HP CUMMINS ISC ENGINE

1050 Ft/Lb. OF TORQUE

FULL-BODY PAINT PACKAGE

INVISIBLE BRA

COLOR-MATCHED ELECTRIC PATIO AWNING

INCLUDES WIND SENSOR & REMOTE

ALUMINUM WHEELS

SIDE HINGED ALUMINUM BAGGAGE DOORS

8.0 ONAN DIESEL GENERATOR

10,000-LB HITCH

DUAL FUEL FILLS

FULL STAINLESS-STEEL STONE GUARD

AIR HORNS

REAR LADDER

42" LCD TV

ELECTRIC STEP COVER

OPTIONAL FEATURES

DECOR: DRIFTWOOD MOCHA

WOOD: CHERRY

FB PAINT: EBONY SUEDE

RVIA SEAL

BUFFET W/STORAGE & 4 CHAIRS

BASE PRICE: 224,000.00

OPTIONS PRICE: 5

SERIAL #: 08A4072TUH2925 / 4UZAB2BSX8CZ61512

Wheelbase: 266.00"
Fresh Water Tank: 96 Gal
Black Tank: 51 Gal
Grey Tank: 51 Gal
Fuel Tank: 100 Gal

ENGINE: Cummins ISC TRANS: Allison 3000 MH
HORSEPOWER: 360 TORQUE: 1050

4-DOOR REFRIGERATOR W/ICE MAKER
CHERRY OR MAPLE CABINETS W/HIDDEN HINGES
CHROME MIRRORS W/HEAT & REMOTE
RECESSED HALOGEN LIGHTING IN LIVING AREA
BUDDY SEAT WITH POWER FOOT REST
10 GALLON GAS/ELECTRIC WATER HEATER
W/XT TECHNOLOGY
HOME THEATER SYSTEM W/SURROUND SOUND
DOUBLE DIN DASH RADIO W/I-POD CONNECTION
SOFA/AIR BED IN ALL FLOORPLANS
FULL EXTENSION BALL BEARING DRAWER GUIDES
CORIAN COUNTERTOPS
CERAMIC TILE (KITCHEN, BATH AND ENTRY)
2000 WATT INVERTER
ULTRA-LEATHER FLEXSTEEL COCKPIT SEATS
W/6-WAY POWER ON BOTH
ELECTRIC WINDSHIELD PRIVACY DRAPE & SUNSCREEN

LOW PROFILE A/C W/HEAT PUMPS
EASY SLIDE STORAGE TRAY-BASEMENT
AUTOMATIC SATELLITE DISH
COLOR COORDIN WINDOW AWNINGS
ULTRA LEATHER SOFA/AIR BED

628.00

FREIGHT:

MSRP: 229,628.00

2008 Damon Tuscany 4072

<http://www.DreamFindersRV.com/RV/7708403/details.htm>